

*we have payment of
Tryptone
in full
5/9/60 \$500*

No 4265

Place Sheridan, Wyoming.
Building Saint Peter's Episcopal Church.
137 West Works Street.
Persons Interested Correspondence with George
Scales, Box 631, Sheridan, Wyoming.
Donor: Mr. Mrs. Manville Kendricks. Box 821, Sheridan, Wyoming.

Dec. 15, 1960.

Date of Completion told Kendrick
\$3000 f.o.b. Sheridan.
Price: (\$60.00)

Minister The Reverend Raymond H. Clark Denomination Episcopal.

Loss 22 4/10%

Architect Present vent in center panel to be moved to base of the center panel.

672.86

Position North aisle window, nearest chancel.
in Church Present vent to be moved to base of center panel.

Height 74 inches Protection Glass Groove Rabbit Metal Stone Wood Wood

Exposure Northeast Footage 50'
May be lighted artificially at night.

Inscription None in the glass.

Design wanted soon. Staging

Templates Wrote Mr. Scales about measurements. Blueprints
Templates received.

General Information To have a figure in each of the three panels -

Central panel: (To be in memory of Donor's son) - The Young Christ Disputing with the Doctors in the Temple.

Left panel: Saint Luke (In memory of Mrs. Kendrick's parents. He (the father), was Surgeon General of the Public Health Service. Hence St. Luke 1. Mortar and Pestle, etc.

Right panel: Joseph of Old Testament (In memory of Mr. Kendrick's parents.)

Note that Mr. Kendrick's father was a cowboy in Texas, associated with the cattle business in 1916, Governor, elected U.S. Senator from Wyoming
very much like the photograph of the Barnstable window, and the Newtonville Central Congregational

See photograph of central chancel window in place.

(Mr. Scales says there are 8 windows. - See letter of Oct. 28, about possibility of alternating plan - including the remaining Apostles, and Old Testament leaders. Also letter of 8/4/59).
Be careful about long toes - which they do not like

We have completed our the window in which the Ke are sending you the rough

Following their suggest their son, we have represe Temple at the center. The group below.

At the left is Saint Mrs. Kendrick's parents. pen and book, while the m caduceus, symbols of the the field below, with a m inasmuch as Saint Luke was Our Lord's birth and early

Joseph of the Old Te powerful in Egypt, is rep memorial to Mr. Kendrick's precious cup that he hid medallion below, his early his father's flocks. herds

Saint Luke's symbol, Judah are represented in of divine zeal at the cen

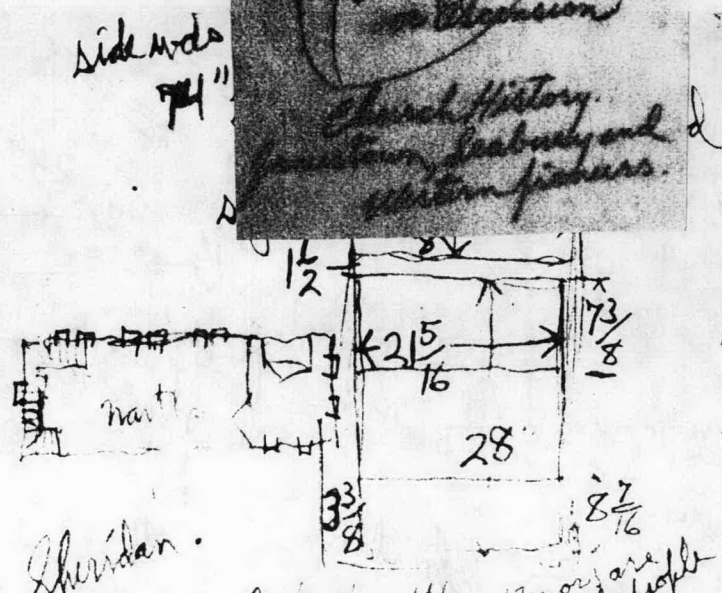
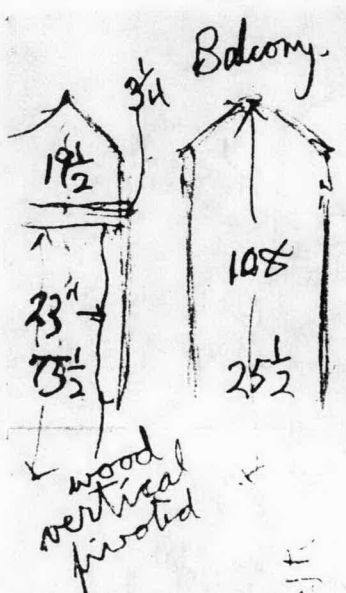
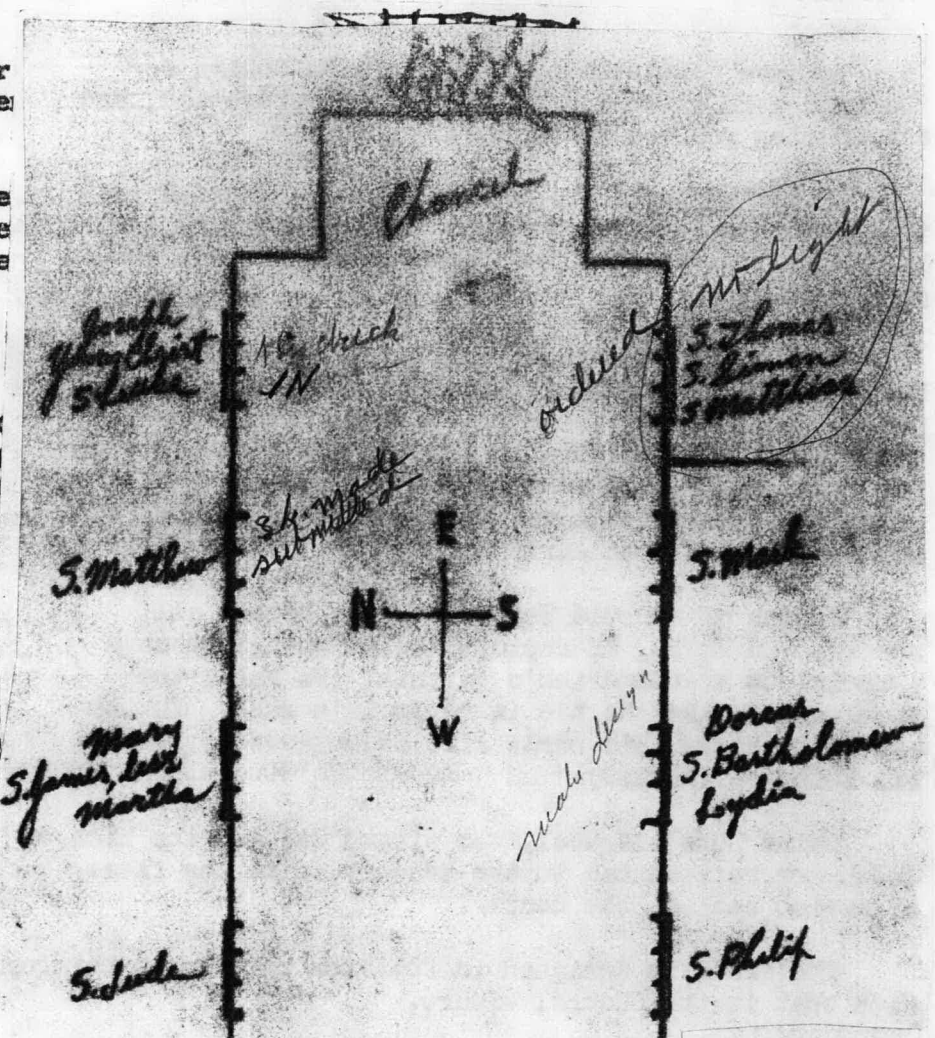
The field is designe with that in the chancel

Note: The Minister remi side. - Keep in mind

Important: Dono shown in the sket

*We are to repre

came into Egypt to feet cattle; and trade hath been about catt an abomination unto the Egyptians.



been t's d is
 Church History
 mention, leabury and
 western finars.

look up catt. Mon are cattle people
 in books say
 called to church

We have completed our study of the design for the window in which the Kendricks are interested, and are sending you the rough sketch herewith.

Following their suggestion for the memorial to their son, we have represented the young Christ in the Temple at the center. The Doctors are shown in the group below.

At the left is Saint Luke, as a memorial to Mrs. Kendrick's parents. He holds the evangelistic pen and book, while the mortar and pestle and the caduceus, symbols of the physician, are represented in the field below, with a medallion of the Nativity, inasmuch as Saint Luke was the principal recorder of Our Lord's birth and early life.

Joseph of the Old Testament, who became all powerful in Egypt, is represented at the right as a memorial to Mr. Kendrick's parents. He holds the precious cup that he hid in Benjamin's sack. In the medallion below, his early life is suggested, tending his father's flocks. herds.* BE SURE TO MAKE CATTLE RED.*

Saint Luke's symbol, the winged ox, and the lion of Judah are represented in the tracery, with the flame of divine zeal at the center.

The field is designed in foliated pattern in harmony with that in the chancel window.

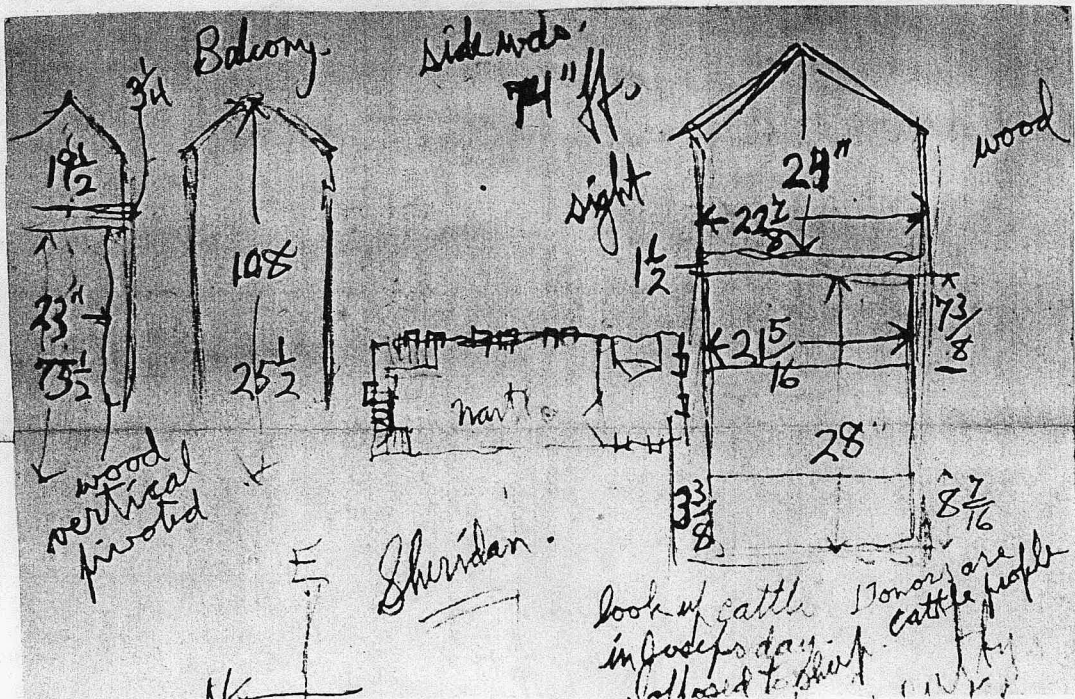
*Donor's father always raised hereford cattle. (Portray in red colors.)

Donor further writes: "...I should be more explicit in using "red" as the color of the cattle...I always think of them as being red. Actually, they vary from almost orange to a deep heart red. The ~~XXXXXXX~~ Shorthorn breed tend to have more brown in the red. Any of these colors would be quite acceptable. I have not the slightest fear that the artist who designs your windows will make a mistake, and am sure that the shade he uses will be correct..."

Note: The Minister reminds us to keep in mind that this window is on the north side. - Keep in mind the northern light.

Important: Donor writes: "...we will be glad if St. Luke's beard is not as black as shown in the sketch.

*We are to represent cattle instead of sheep - "And they took their cattle...and came into Egypt" (Genesis 46:6) "And the men are shepherds, for their trade hath been to feed cattle; and they have brought their flocks and their herds" "Thy servant's trade hath been about cattle from our youth even until now...for every shepherd is an abomination unto the Egyptians".



memorial to Mr.
precious cup the
medallion below, his earl
his father's flocks. herds

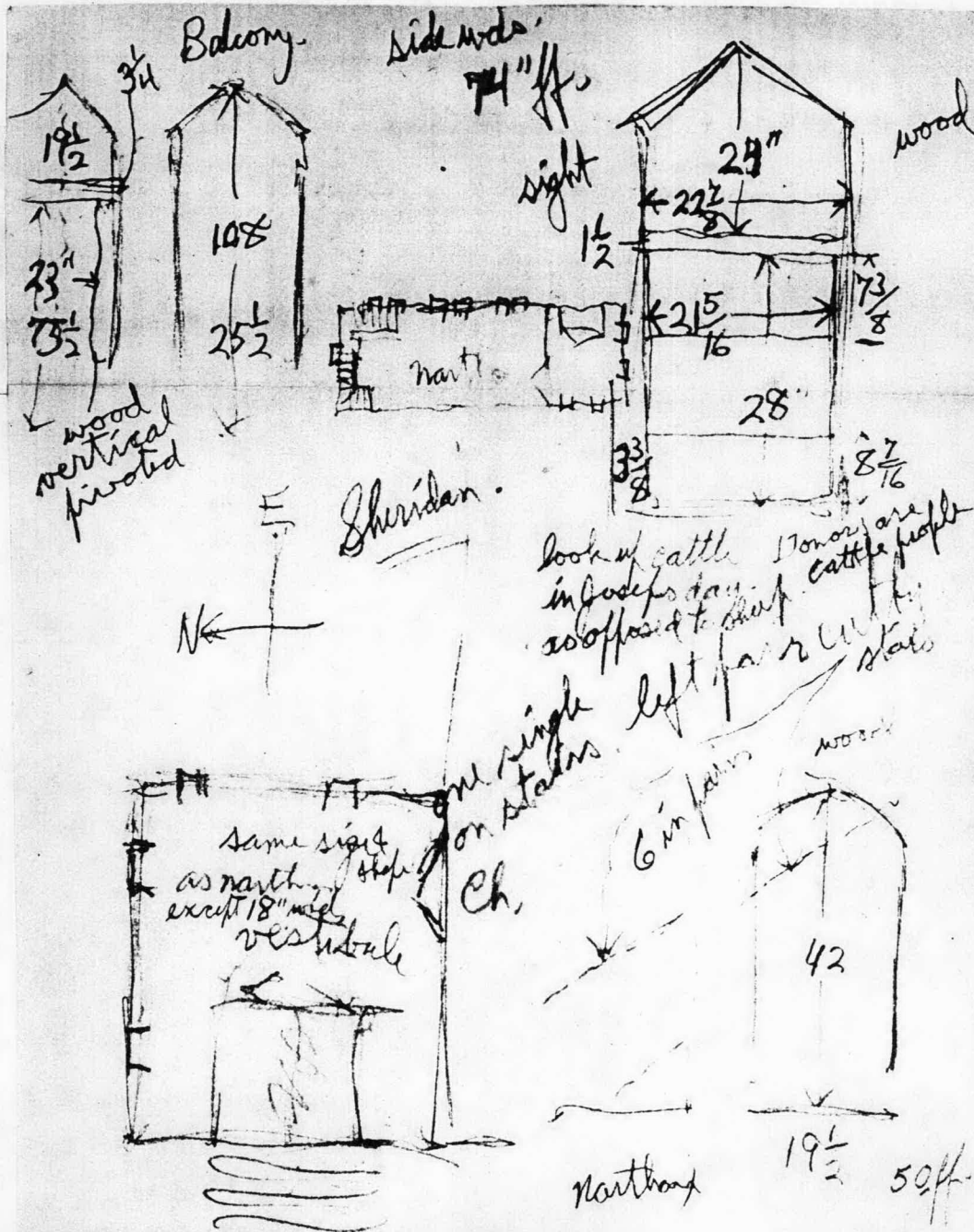
Saint Luke's symbol,
Judah are represented in
of divine zeal at the cen

The field is designed in foliated pattern in harmony
with that in the chancel window.

Note: The Minister reminds us to keep in mind that this window is on the north
side. - Keep in mind the northern light.

Important: Donor writes: "...we will be glad if St. Luke's beard is not as black as
shown in the sketch.

*We are to represent cattle instead of sheep - "And they took their cattle...and
came into Egypt" (Genesis 46:6) "And the men are shepherds, for their trade hath been
to feed cattle; and they have brought their flocks and their herds" "Thy servant's
trade hath been about cattle from our youth even until now...for every shepherd is
an abomination unto the Egyptians".



the window in which the Ke
are sending you the rough

Following their sugge
their son, we have represe
Temple at the center. The
group below.

At the left is Saint
Mrs. Kendrick's parents.
pen and book, while the m
caduceus, symbols of the
the field below, with a m
inasmuch as Saint Luke wa
Our Lord's birth and earl

Joseph of the Old Te
powerful in Egypt, is rep
memorial to Mr. Kendrick'
precious cup that he hid
medallion below, his earl
his father's flocks. herds

Saint Luke's symbol,
Judah are represented in t
of divine zeal at the cent

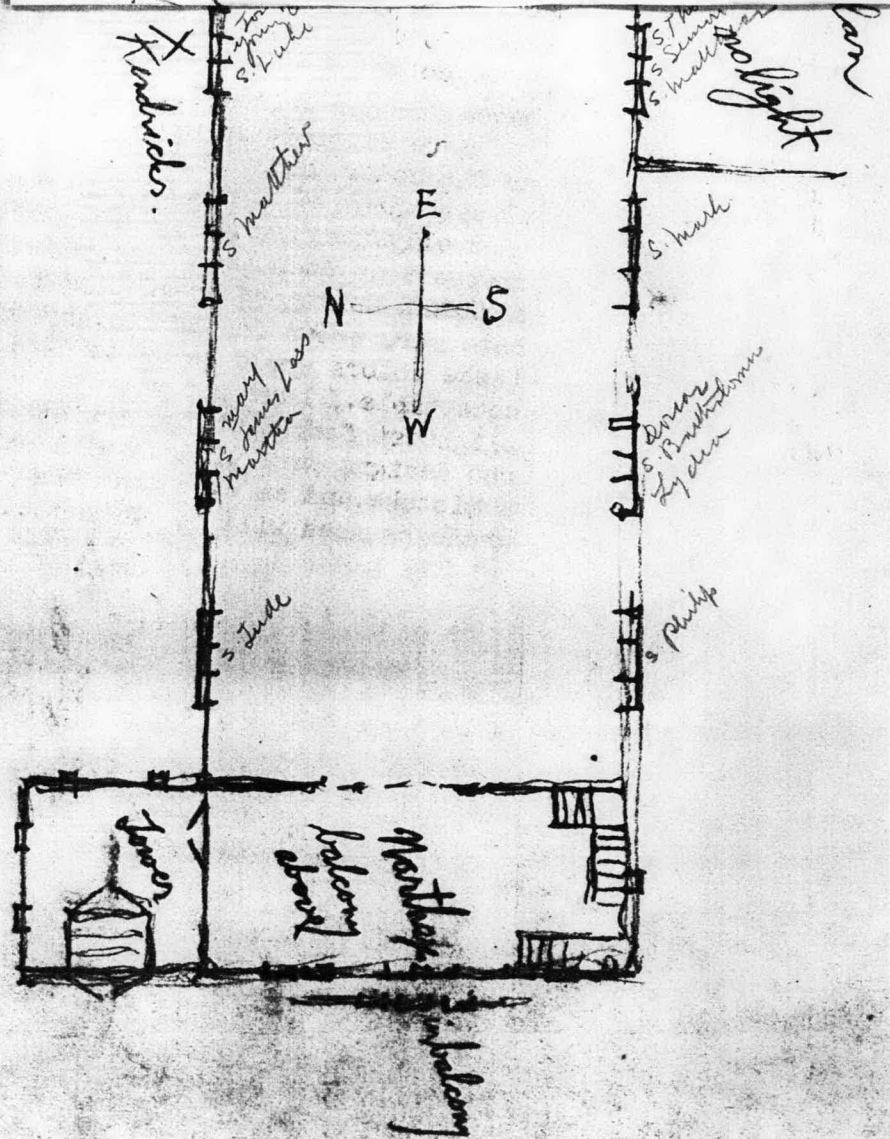
The field is designed
with that in the chancel w

Note: The Minister remin
side. - Keep in mind the

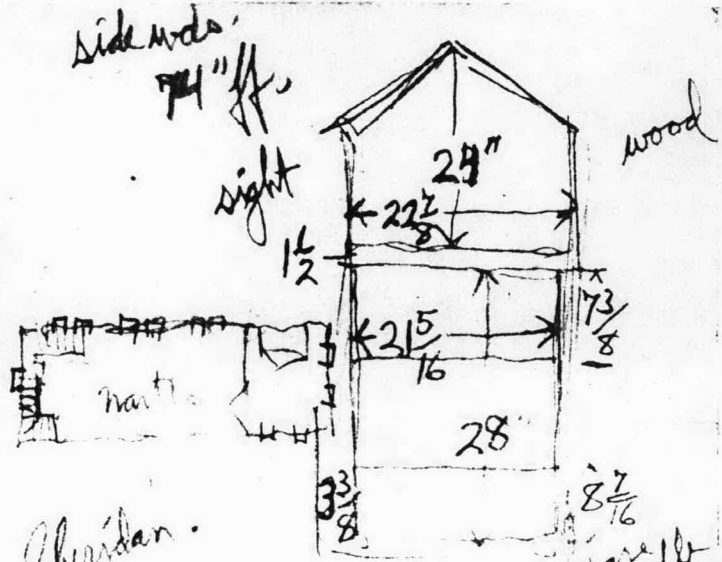
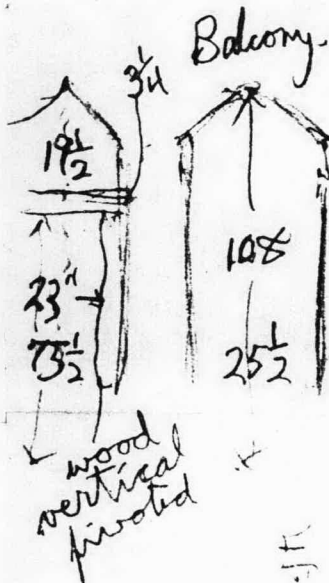
Important: Donor writes:"
shown in the sketch.

*We are to represent cattl

came into Egypt" (Genesis
to feet cattle; and they h
trade hath been about catt
an abomination unto the Egyptians .



been
t's
d is



Sheridan.

look up cattle
in body of
20' off to
side left
Donor are
cattle people
Stair