

We will bill them extra for the installation.

paid by church

Give me the out of pocket setting

No 4480

Place Grosse Pointe Farms, Michigan.

April 1, 1962.

Building Christ Church.

Date of ~~December 1, 1961.~~ Completion

Persons Interested Mrs. Ward Arnold Detwiler.
Great Island - Box 896, West Yarmouth, Mass. (Summers).

\$300 ea panel (\$50 per ft.).
Price: (Total, \$900 for the 3 panels). f.o.b. Grosse Pointe Farms.

Minister The Reverend Erville Maynard, Rector

Loss 33 1/2 % of 303.97

Denomination Episcopal.

Architect

Vents

Position Both on Stair landings - single panel on lower level, and
in Church 2-panel window on upper level - see diagram. Single panel, stone,

Height from floor	Protection Glass	Groove Rabbet	Metal Stone Wood	Steel frames in place, for 2-panel group.
-------------------	------------------	---------------	------------------	---

Exposure Single panel west; double window South.
clear strong light. Footage 6' each panel.

Inscription for base of ~~the~~ window: "In Memory of Ward Arnold Detwiler II ~~and~~
1918-1959", from his family and friends."

2-panel group: "Ward Arnold Detwiler 1880-1946" (first panel); in the
second panel: "From his family."

Design wanted Staging

Templates Wrote City Glass Co., 11300 Kercheval Av. Blueprints
Detroit 14, about this. Received.

General Information With the designs, the rector would like us to send him several
small fragments of the type of glass.

Make designs for one 2-panel group (12' in pair"); and one single panel 6 feet.

Rector writes: "I have in mind the use of what I call collegiate glass in diamond shaped panes with occasional small painted symbols and varying pale hues in color. The windows we happen to have presently in our choir room have very narrow margins or borders in more intense reds and blues. You might plan such symbols as the Creator's Star, Two triangles and circle, Three Fishes, the Agnus Dei, the fish, the fountain, cross and orb, the phoenix, scallop, the anchor, the sacred monogram and the alpha and omega.

We have completed our study of the designs for your windows and are sending you the rough color sketches, herewith.

They are designed in light tinted glasses set in diamond leaded pattern, accented with Christian symbols. We have suggested a rather free leading, but of course, this could be quite formal, omitting the "accidentals", if you wish.

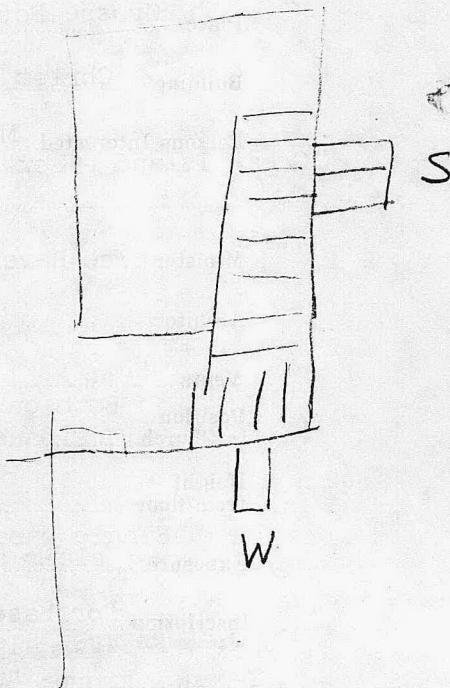
The border lines of the pair, or single window, might be blue, if you prefer.

For interesting composition, we have given prominence to one symbol in each panel, - the Agnus Dei, the Cross and Orb, and the Phoenix.

Other symbols include the Chi Rho monogram, the Anchor, the Creator's Star, the Fishes, the Fountain, and the Alpha and Omega. Trinity symbols, or the scallop Shell of Baptism, may be substituted for any of these.

I am sending fragments of the type of glass we have in mind. The fields might all be in Cathedrals such as the samples marked A, or the clearer more transparent Antiques marked B. Small fragments of ruby and blue are marked C.

Copies of glass samples in folder.



Windows serve as the only illumination on the stairs.

NOTE: We are to put in a very small formal 4-petal rose, in character with the inscription, in the lower right-corner of the 2-panel window.

Changes to be made in designs, to be returned to Mrs. Detwiler on the cape before Sept. 1. - Note, all symbols chosen by donor from Weber -

Single panel: Dominant symbol: The Phoenix, Plate VII, symbol #22.

Secondaries: The Anchor, Page 77, Plate VIII, symbol #34; The Fountain (Wavy lines, etc), Page, 57, Plate VI, symbol #6; Two triangles, Page 41, Plate III, symbol #8 - and a little fish.

Two-panel window: Dominant symbols - The Globe and Cross, as is; and The Lamb of God with banner, etc.

Secondaries (3 in each panel): 3 fishes, page 45, Plate IV, symbol #19; Scallop Shell, Page 67, Plate VII, symbol #20; Chi Rho; Combined Alpha and Omega, Page 95, Plate X, symbol #3; The Creator's Star; Trefoil and Circle - Page 45, Plate IV, symbol #15.

See inscription.

They want a blue border with red blocks, and the diamond pattern more formal, omit the complete breaks across the diamonds, but leave in the little red and blue accidental.

They do not want the window to look like an antique. Want windows very light, with strong red and blue border around the edge. These are the last windows to go in the church. Does not want the window too transparent - tree, but not high and across the drive.

We have completed the changes in the designs for your windows and are returning the rough color sketches, herewith.

The orb surmounted by the cross, symbol of Our Lord's victory and power over the world, and the Lamb of God bearing the cruciform banner of victory, are the dominant symbols of the two panel window.

The symbols through the fields include the Chi Rho monogram, the six pointed Creator's Star, the three Fishes entwined, the Alpha and Omega monogram, the escarpment of Shell of Baptism, and the interlaced trefoil and circle.

The inscription is, - "Ward Arnold Detwiler 1880-1946... From his family".

The Phoenix rising anew from the flames of its nest is the dominant symbol in the single panel.

Through the field are the symbols of the Fountain, the interlaced triangles, the Anchor, and a fish.

The inscription, - "Ward Arnold Detwiler II, 1918-1959 ... From his family and friends".

We have somewhat formalized the diamond field and made the border line blue with ruby accents.