

No 3946

Place San Antonio, Texas.

Building Christ Episcopal Church, 301 W. Russell Place. Date of Completion March 25, 1958.

Persons Interested Mr. Gilbert M. Denman, Jr. and his mother. Denman, Franklin and Denman, Lawyers, San Antonio Loan and Trust Building, San Antonio, Texas. Home: Mocking Bird Road. Tel. Diamond 2-2931.

The Reverend Samuel O. Capers, 301 W. Russell Place, San Antonio 12, Texas. Minister. Price: \$4000 (\$67.80)

Architect A.B. and Robert M. Ayer, Architects, 342 W. Woodlawn Av. San Antonio. Denomination Episcopal. *Loss 18% = \$716.00*

Vents No. 3/14/57. (See report of this date about vents in other windows)

Position in Church Aisle Window, nearest chancel.

Height from floor 3 feet. Protection Glass We supply. See Cont* Groove Rabbet Metal new sash supp. Stone lined by church. Wood

Exposure South. Footage 57 feet. Receives a strong light. Street side.

Inscription "In memory of Gilbert Morgan Denman." (See contract).

Design wanted February 24, 1957. Staging

Denman recommended the Orco Co for templates and setting - Orco and Jacoby Art Templates. Glass 8126 Broadway, San An. Tel. Taylor Blueprints 6-7871.

Template from Orco

General Information Subject: "Christ's Triumph" - central lancet to depict the Ascension, the lancet to the right the Resurrection (Christ with Women); and that to the left, Pentecost (with Peter, to balance the Resurrected Christ). "We would like the Resurrection lancet to show the Risen Christ with the women kneeling before him and - at the base, a medallion showing the angel and the empty tomb. The medallion at the base of the left lancet to be Matthias chosen."

We do not want these windows to be overful and too busy.

"In the three little lights above the three lancets we would like angels with trumpets - the trumpets pointing upward; angel with censer; and simple angel at top.

In the design and in the painting of the glass we want you to achieve a strong and powerful Gothic feeling rather than the sweet delicate Burne-Jones like look seen in so many windows. In short, we want this window to look like we had stolen it from Chartres.

IMPORTANT: Mr. Denman and his Mother will want to come to see the cartoons and some of the glass.

(See subject suggestions for all the windows 11/23/56) Their plan is to have new sash with the horizontal divisions removed, as suggested in the sketch layout.

The only windows in the church are 3 tiny windows in a vestibule leading to the

** Latest plan to remove present sash & set new sash with all glass details in frame as shown in sketch 6/29/57*

cloister, made by the Lamb studios. The Church has 10 windows along the sides, five on each side, and one large window in the front in the gallery. There are other small windows in chapels and elsewhere which might eventually be improved. (The window in the front of the church has 4 instead of 3 windows.) The cloister creates a good deal of shadowing on the north windows.).

We think it has worked out beautifully in the strong and powerful mediaeval spirit you have in mind.

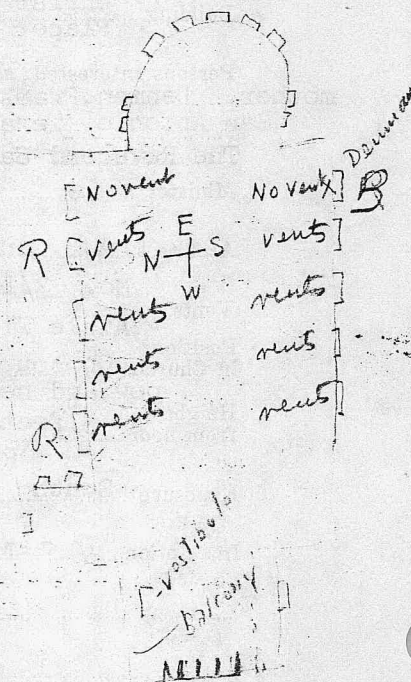
As planned, it is devoted to Christ's Triumph, with the representation of the dominant ascending figure at the center, and the apostles grouped below.

At the right is the Resurrection, with Our Lord bearing the Cruciform banner of victory, coming from the dark tomb. At His feet are the three Marys. The symbol above represent the phoenix rising anew from the flames of its nest; and in the base, the angel at the tomb.

Opposite is Pentecost, with Peter as the dominant figure, accompanied by John and Andrew, and the halos and flames symbolizing the remaining nine. Above is the descending Dove of the Holy Spirit. In the predella Matthias is chosen to replace Judas.

The tracery members are enriched with angels of praise and prayer, bearing trumpet and censer, and, at the top, the globe surmounted by the cross, traditional symbol of Christ's victory over the world.

In the base is the inscription, "In Memory of Gilbert M. Denman." This could be expanded in the three panels with dates if you prefer.



-See report of March 14, 1957 for notes about the church and various windows. "...In the meeting they thought there should be vents in the lower part of the two outer panels, but later Mr. Denman didn't think there should be any vents in their window or the opposite one, as they come clear of the pews, while the pews cut into the rest of the windows, and vents could be used in them. The south side, where the Denman window is, receives a strong light. It is the street side. There is a sort of cloister on the north side which greatly shades those windows, and they will have to be a lot lighter... In the chancel is a whole series of small windows, about six, rather high and short, the whole series devoted to the 23rd Psalm, extreme picture windows - excellent landscapes. There are also four more, two to a side of this group, with quite simple symbols.

*On this window they want "plate or other glass protective windows of ample thickness and strength to protect the stained glass from hail damage". Ask Orco to look into this when we take templates.

Aug. 6, 1957. Sent samples of ruby to Mr. Denman - pure rich colors. Do not get orange reds in the window.