

*Made by someone else*

No 3892

Place Boston, Mass.  
Building Immaculate Conception Church, 761 Harris Avenue.  
Persons Interested  
Date of Completion  
Price: \$1200 each pair (\$27.27)

Minister Very Rev. Francis J. Gilday. Denomination R.C. (Jesuit).

Architect

Vents Yes - we furnish new upper vents.

Position in Church Aisle windows in the basement.

Height from floor	about 3' /	Protection Glass	Groove Rabbet	Metal Stone Wood
-------------------	------------	------------------	---------------	------------------

Exposure 3 east; 3 west. (Chancel is North). Footage 44' each pair.

Inscription

Design wanted soon. Staging

Templates MAKE TYPICAL SKETCH WITH ANNUNCIATION AND NATIVITY. Blueprints

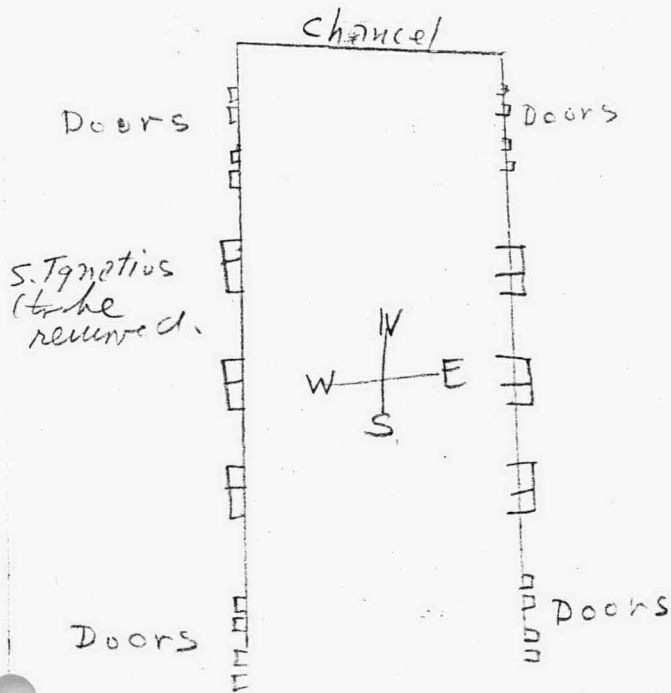
General Information There are 3 pairs on each side. To have new sash, but with upper vent. (Besides these there are door panels, to be taken up later. See sizes in folder). Windows are now double-hung.

Father Gilday doesn't like pale sickley yellow glass.

Father Gilday's idea is to represent incidents with the Blessed Mother, which would include Christ, such as The Nativity, The Presentation, the Carpenter Shop, the Marriage Feast, the Crucifixion - also the Annunciation, The Coronation, Ascension, Flight into Egypt, Christ in Temple with the Doctors.

He liked the idea of the Manhattenville; that is, very light tints with medallions in full color.

At present there is a window with Saint Ignatius - nearest the chancel on the west side.



We have kept it very light to admit an abundance of illumination, but the full color medallions and accents through border and field will give the windows a colorful as well as brilliant aspect.

We have represented the first two incidents in the series including the Blessed Virgin Mary, - the Annunciation and the Nativity.

We have in mind continuing the series with the Flight into Egypt, the Presentation in the Temple, the Finding the Young Christ among the Doctors, At work in the Carpenter Shop, the First Miracle, Bearing the Cross, the Crucifixion, the Ascension, and the Coronation of the Blessed Virgin.

This makes eleven. No doubt you can supply the theme for one more panel, and perhaps you will want to make changes in the above list. But you will readily recognize the lovely possibilities for this series of windows.