

*How about the 2 plain ones
in confessional - Priest? Make
separate job sheet?*

No 3786

Place..... Houston, Texas, Date of Completion..... May or June 1958. ^{10/3/57}

Building..... Saint Mary's Seminary Chapel, Price: (88.88 unit)

Persons Interested..... Bishop Hold. ^{1700 total for 2 pairs.}

Minister..... Maurice J. Sullivan, 3901 Travis, Houston 6, Texas. Denomination..... R.C.

Architect..... Profit 1.52

Vents..... bottom pivoted vents.

Position in Church..... Bishop Hold says only one retaining frame on each side - compare pane's unity.
2 nave windows (Rectangular); 1 each side, farthest from chancel.

Height from floor..... 5'8" Protection Glass..... Groove Rabbet Metal Stone Wood.....

Exposure..... 1 S.W., 1 N.E. Footage..... 18 feet each pair?

Inscription..... 9' each panel
36' in 2 pairs.?

Design wanted..... in sketch 6/21/57 Staging.....

Templates..... Blueprints.....

General Information..... On one side, the window will complete the 7 Sacraments which are used in the 6 larger windows. (Holy Orders). - perhaps use Porter and Priest

~~The final window, with its different shape, would have two dominant panels, and we felt this could well be devoted to Holy Orders, representing the first and final ones, either the Tonsure or Porter, and the Priesthood in something of the manner shown in our group of windows devoted to the Holy Orders at the Catholic University in Washington.~~

~~Extreme Junction is to be the subject of the window on the S.W. side.~~

~~We shall complete and submit this design if you like that idea.~~

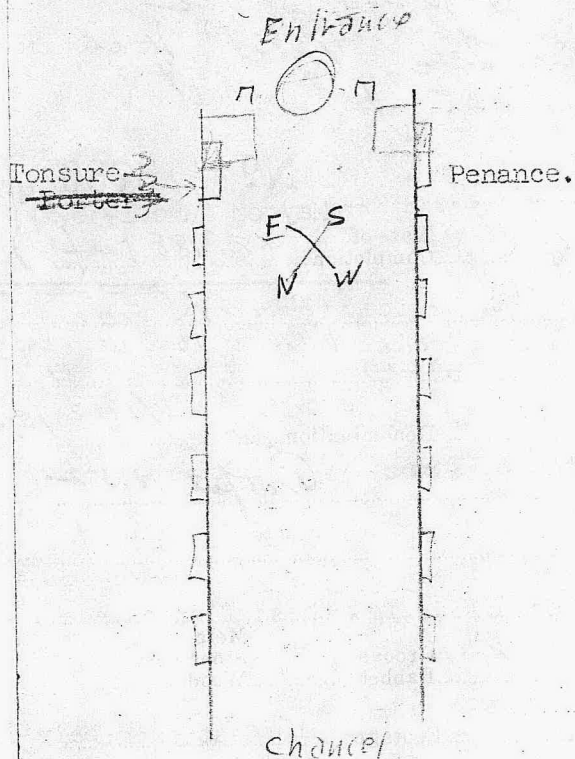
22" x 7'2"

17" x 6' = 9' in one pane
18' in 2 panes

84
76

Note: the left-hand panel of the southwest pair is behind the confessional, so only the right-hand panel is to be enriched. This will be the final window on this side, devoted to the Sacraments, and must be designed to carry on the established scheme. See photograph of Baptism window in place. This panel will be devoted to PENANCE. RETURN. Return original design with this new one for comparison.

Make design for Northeast window - Tonsure-Porter



To illustrate how the series could be completed in the smaller panel beside the confessional we have made another sketch devoted to the first two orders, the Tonsure and the Porter. They are represented one slightly behind the other, the Porter having the keys as his symbol. Below is the cross and bell.

We have also studied the smaller single panel on the opposite side, representing the Sacrament of Penance. Following the plan established in the Baptism window the figure of Our Lord blesses the kneeling penitent, while the keys take their place as the background symbol. Though the figures are smaller and the heads come lower than in the larger windows, we think they will harmonise well with the others.

Make design for Tonsure. "The Bishop felt that we would like to see sketches of the small windows with figures equal to those in the large windows. Since the small window is larger in each direction than the three lights of the large window there will be some room for white glass at the sides and room for a small symbol at the bottom..."

As suggested, the small rectangular panel given to Tonsure, keeping the figure in those in the larger windows, which leave a good margin of light glass and the scroll at the bottom. scroll at bottom with "DOMINUS PARS".

October 21, 1957.

"We are sending you the rough color sketch with the altered design for the single panel Penance window in Saint Mary's Chapel. We have taken a color photograph of this, and will send it to you as soon as it can be developed..."

Also make design for the simpler panels - one in each confessional (total of 2 which are seen only inside the Confessionals).