

Nº 3832

Place Spokane, Washington.

Building Manito Presbyterian Church.

Date of Completion Dec. 20, 1956, with opposite window.

Persons Interested

Price: \$1700 (\$35 sq. ft.)

PAID 27 To #465755

Minister

Denomination Presbyterian.

Whitehouse, Price, DeHoff and Keeble, Architects, Hutton Building, Spokane.

Architect

Vents

Position in Church Triad Shaped Window opposite the chancel.

Height from floor 19 feet.

Protection Glass

Groove Rabbet

Metal Stone Wood

Exposure West. (O.E.S. says. The Axial windows get clear light. Some pines near middle of sides, but not too close.)

Inscription

revised

Design wanted soon as possible.

Staging

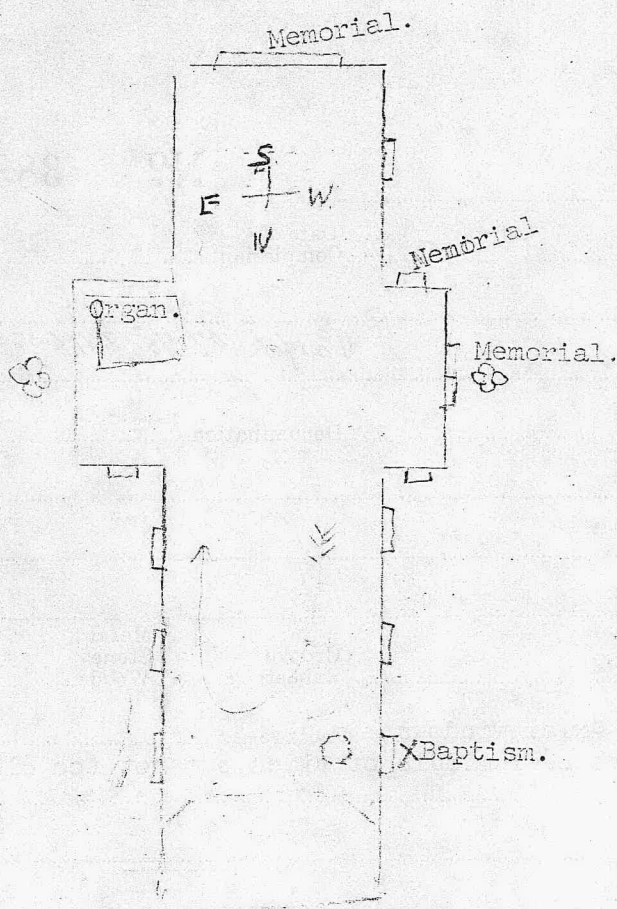
Templates

Blueprints

General Information To have a rather simple treatment, similar to that used in the aisle designs.

As planned, it is treated somewhat more simply than the aisle windows, but in full color, to harmonize with the vesica shape one over the altar.

The dominant symbol of the Lamb of God, with the cruciform banner of victory, is surrounded by four flames of religious zeal which might suggest the four Evangelists.



Rough notes and diagram of windows on back of note of May 23, 1955, in folder.

As planned, this window is intended to go near the Baptismal font, and is devoted to the Baptism of Our Lord by Saint John the Baptist.

Christ is represented standing in the waters of the Jordan with S. John the Baptist holding his traditional rustic cross at one side, and an attendant angel at the other. Above, is the symbol of the Descending Dove of the Holy Spirit; and at the base, the symbol of Baptism, the font. Through the border are shells also symbolizing Baptism.

The field is enriched with growing vine forms, suggesting the grape, and symbolizing the unity and fruitfulness of the Church through the words of Our Lord, - "I am the vine, ye are the branches."

In the actual glass we believe the dominant medallion can well be somewhat larger, occupying the space down to the next horizontal reinforcing bar. We can work out this proportion to best advantage in the full size drawing..."

**IMPORTANT:** In making the actual window, make it quite different from the sketch. We are to make the medallion ~~fatter~~ more slender, as in the Northminster, Evanston window. They would like to eliminate ~~the~~ or reduce the heavy blue border around the larger medallion. Follow the proportions of the Evanston Northminster to a large degree. They felt that the lower medallion with the font tends to be obscured by the larger one.

MISS PARKER SHOULD SEE THE FULL SIZE DRAWINGS HERE.

USE ONLY ONE OF THE BACKGROUND PATTERNS, AND A LITTLE LIGHTER FIELD.