

60.60  
3 2 2 500  
194  
200

No 3525

Place Towson, Maryland. Date of Easter, Apr. 18, 1954.

Building The Towson Presbyterian Church, Chesapeake and Highland Avenues, Towson 4, Maryland. Completion Loss # 147 292 96

Persons Interested The Rev. Robert W. Galloway.  
Secretary is Miss Dorothy E. Robe. Price: \$2000 each pair. (60.60)

Minister See above. Denomination Presbyterian.

Architect Warren G. Gill, Architect, 5500 Woodmont Avenue, Baltimore 12, Maryland.

Vents Yes, in all windows. See report of June 12, 1953.

Position in Church Aisle window nearest chancel on West side. Near Baptismal Font.

Height from floor	Protection Glass	Groove Rabbet	Metal Stone Wood

Exposure West. Footage 33'

Inscription In Memory of Estelle H. Ekin Given By Her Family (See letter 10/24/53).  
At a later date the second inscription is to be changed to "In Memory of John J. Ekin."

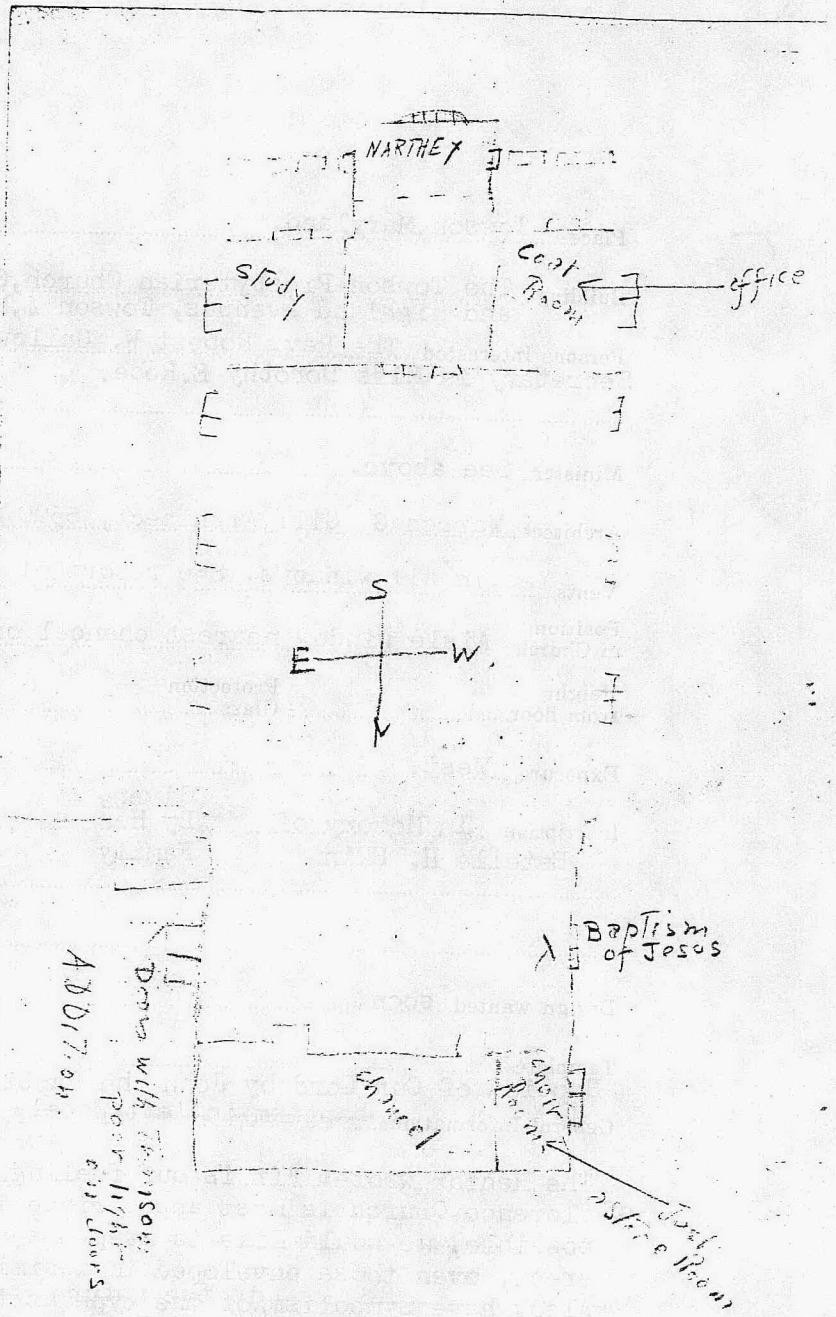
Design wanted SQQM. Staging

Templates Blueprints  
Baptism of Our Lord by John the Baptist; John in one panel and Jesus in other  
General Information Baptism in left panel, and Nativity in right panel.

The Rector wrote: "It is our feeling that the figure of Christ in the nature of Florence Church is most appropriate in style and execution. If it is possible, we would like to keep the series with most of the figures erect, even those enveloped in a similar oval pattern. Also, have symbolism of the type at the bottom of the Christ Church Cathedral windows in St. Louis." "It is also our feeling that any writing in the window portions should be a passage of scripture."  
Lamb of God in base of Baptism, and Lily in base of Nativity.  
We made suggestions for additional window subjects. See letter of July 2, 1953. Also suggestions for door panels in this letter.

For general notes about the church and windows, see report of June 12, 1953. Also letter of July 24, 1953.

Photographs of exterior of church in folder.



Revisions to be made in original design, to be returned: "...figures are a little large in relationship to the entire window and to the size of our sanctuary....hesitancy...as to the large amount of flesh showing in a similar window. Include memorial inscription. "

We are glad to tell you that we have now completed the color design for your altar window mosaic; the drawing on the next slide.

As planned, it is devoted to the theme of the Baptism of Our Lord, with the figure of Saint John the Baptist in the left panel dressed in the skins of animals, and holding his traditional symbols, the shell of Baptism, and the rustic cross. The right panel sets forth the figure of Our Lord, with the cruciform halo, and standing in the water in the attitude of being baptized. At the head of the lance is the Dove of the Holy Spirit shedding its rays of divine light and grace upon the figure below.

Under the dominant medallions is the text from Saint Matthew's 4th 10, a voice from Heaven saying - This is my Son in whom I am well pleased."

At the bases of the panels are significant symbols related to the figures above - again the shell of Baptism, and the Lamb of God bearing the cruciform banner of victory.

The composition is completed by the grapevine motif, recalling the words of Our Lord, "I am the vine, ye are the branches."

The backgrounds of the medallions and borders of this first window are in rich ruby, symbol of Divine Love, and would be the first of a scheme of alternating color: ruby and blue, throughout the group; that is, in the next window of the series, the rubies would be replaced by blue for divine wisdom.

Spaces have been left for heraldic inscriptions if they are desired, or this portion may be completed with the grapevine border.

We have kept an altar treatment similar to our windows in Florence, South Carolina and St. Louis, Missouri, which you liked.