

CHARLES J. CONNICK : DESIGNER AND WORKER IN STAINED AND  
LEADED GLASS : NINE HARCOURT STREET, BOSTON, MASSACHUSETTS

✓  
August 15, 1947 <sup>Perhaps April 1, 1947</sup> 7/21/47

City or Town Champaign, State Ill. No. 2727  
Univ. of Illinois., 809 S. 4th St., Date of Middle of Aug. 1947.  
Church Chapel of McKinley Foundation. Completion (2/4/46)  
Donor and Mrs. W. J. Fraser, 1002 So. Busey, Urbana, Ill.  
Address Mr. Berger, of Berger and Kelly, Supervising Quality of \$2000 for 4 nave windows  
Architect architect. Glass and rose (\$55.55).  
Denomination James R. Hine, Minister, McKinley Memorial Chapel, Daniel, Fifth and  
and Minister John Sts. Champaign, Ill. sight  
Footage 8 feet each. Sizes, full Loss 22% 39061  
Ventilators None 5/2/47 Set by Brack went to Champaign twice  
Position in Church 4 nave windows. (43 inches apart). See letter of  
Height from floor 38" 41" Protec- tion Glass Groove Rabbet Stone Wood May 2, 1947.  
Points of compass West.  
Quality of light West.  
Inscription through all four windows:  
Inscription (in one of the windows) "In loving memory of Wilber J. Fraser who  
loved this chapel, the students who worshipped in it, and its spiritual life"  
possibilities" (12/19/45) (See report of Mar. 1946 - for fourth window, whose  
either of the last two divisions). See contract.  
Design wanted Soon. Staging  
Shipping address Be sure to notify Mrs. C.E. Fraser of Gray Gardens West, Cambridge, when she can see windows here. Blue-prints  
Bill to Taken by O.E.S. Paul has. Templets See our letter of 7/3/46. Sizes from Prof. Province 10/24/46 Received  
Photos of Cartoons Mailed KEEP FIGURES AS YOUTHFUL AS POSSIBLE.  
General Information Design for typical nave window.  
Plan of subjects involved the symbolism of the purposes of the Westminster Foundations relating them to significant incidents through the Life of Our Lord.  
Mrs. Fraser sent material and a photograph of her husband. To be returned when we are through with it.  
"For the estimate of \$2000, which I have suggested, I have in mind the very finest type of windows, with an abundance of sturdy lead surrounding small pieces of glass."  
Keep in mind an alternation of color scheme through the group of four windows.

For addresses of those to be notified as window progresses, see other side.

Mr. Hine has suggested "a work symbolic of what all Westminster Foundations are trying to do. The purposes are these: 1. Universal commitment to Christ and His Kingdom. 2 Bible study and prayer. 3. Understanding the Christian faith. 4. Worship and service in the church. 5th Growth in Christian Character. 6. Stewardship. 7. Christian World Order.

*Design made*

1. To symbolize ~~Universal~~ Commitment to Christ and His Kingdom.

The Calling of Peter and Andrew to be fishers of men (4:18-19). (large med.)  
~~(They are fond of the Jews). Scripture - For whoever would save his life will lose it, and whoever loses his life for my sake will find it. Matthew 16:25~~

2. Bible Study and Prayer - Understanding the Christian Faith.

~~Christ among the Doctors (St. Luke 2:46). Large med. Sermon on the Mount (Christ preaching to multitude). Scripture - Thou shalt love the Lord thy God with all thy heart, and with all your soul, and with all your strength, and with all your mind.~~

3. ~~Worship and Service in the Church. Growth in Christian Character.~~

~~The Sermon on the Mount - The Eight Beatitudes (St. Matthew 5:3-10).~~

~~Large medallion - Jesus in the Synagogue (Luke 4:16).~~

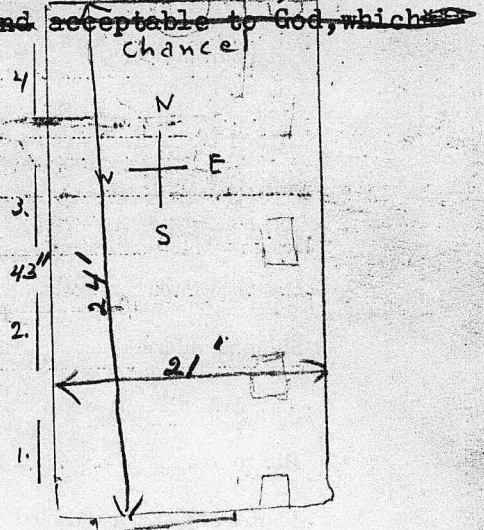
4. ~~Stewardship~~ Growth in Christian Character - Stewardship

~~The 25th Chapter of St. Matthew. Verses 35-50. For I was an hungred, etc. or The First Miracle (Saint John 2:1).~~

~~Large med. Parable of Talents (Possibly with youthful figures).~~

~~Scripture - I appeal to you therefore, brethren, by the mercies of God, to present your bodies as a living sacrifice, holy and acceptable to God, which is~~

Mrs. Fraser's husband was connected with the Univ. of Ill. for 50 years as teacher and head of a department in Coll of Agriculture, which he organized 50 years ago. Great love for farm and farm life. Loved nature, sunsets, etc, farm animals - humanized them. Glorified common things of life.



Mrs. Fraser likes the color plate of the Holderness School window. Combine that idea with the general plan of subject matter above. Of course, this does not include the 3 full figure medallions as in the Holderness School window, but we should use the deep rich palette that distinguishes that window.

Work out this idea in a rough sketch before suggesting a larger allowance. Keep the figures as youthful as possible. The scheme to have full and secondary medallions, and inscribed books with the text, and the memorial inscription at the bottom.

Typical design: "incorporates the subject material for the first window, with the dominant medallion devoted to the Calling of Peter & Andrew to be fishers of men, and the smaller medallion symbolizing Jesus and the Rich Young Ruler (St. Luke 18:18), as a significant commentary on the central theme. The open book of the Scriptures

would bear the text from the 25th verse of St. Matthew's 16th Chapter, "For whoever would save his life will lose it, and whoever loses his life for my sake will find it."

"...a lovely balance of pure blue and ruby, with the blue predominating but very well foiled by the passages of ruby and gold. We plan an interesting counterchange of ruby and gold, blue in minor positions through the group of four, to add pleasant variety. Through all runs the very essential thread of silver accented with gold and green. While these windows are designed in full color, the gold and silver passages prevent them from becoming somber and they will sparkle and glow in all lights. "... There will be a counterchange of the dominant colors, but the general color scheme will carry through and unite the group.

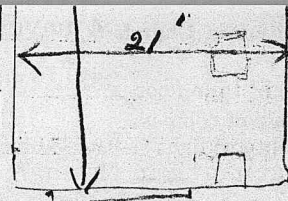
Jan. 9, 1947. (returned the original approved color design on black card, with tracing paper sketch for alternate color scheme, and rough sketches for the dominant themes of the remaining 2 windows. This will illustrate out thought for the counter-change of color, ruby and blue, through the group.) The subjects, as planned are indicated on the sketch, and texts, for the open books, are given on the enclosed sheet, as suggested by Mr. Hine and his staff. The second and fourth are pretty long, but we will plan their design to best advantage in the full size drawings.

2727

For addresses of those to be notified as window progresses, see other side.

Position in Church 4 nave windows. (45 inches apart).  
 Height from floor 36" 41"  
 Protection Glass  
 Groove Rabbit  
 See letter of Stone May 2, 1947.  
 Points of compass West.  
 Quality of light West.  
 Inscription through all four windows.  
 "In loving memory of Wilber J. Fraser/who loved this chapel, the students who worshipped in it, and its spiritual life" (See report of Mar. 1946 - for fourth window, above possibilities" (12/19/46)  
 Design wanted Soon.  
 Shipping address Mrs. C. E. Fraser of Gray Gardens West, Cambridge, when the can see windows here.  
 Taken by O.E.S. Paul has. Temples See our letter of 7/3/46. Sizes from Prof. Province 10/24/46  
 Photos of Cartoons Mailed KEEP FIGURES AS YOUTHFUL AS POSSIBLE.  
 General Information Design for typical nave window.  
 Plan of subjects involved the symbolism of the purposes of the Westminster Foundations relating them to significant incidents through the life of our Lord.  
 Mrs. Fraser sent material and a photograph of her husband. To be returned when we are through with it.  
 "For the estimate of \$2000, which I have suggested, I have in mind the very finest type of windows, with an abundance of sturdy lead surrounding small pieces of glass.  
 \*Keep in mind an alternation of color scheme through the group of four windows.

Mrs. Fraser likes the color plate of the Holderness School window. Combine that idea with the general plan of subject matter above. Of course, this does not include the 3 full figure medallions as in the Holderness School window, but we should use the deep rich palette that distinguishes that window.



Work out this idea in a rough sketch before suggesting a larger allowance. Keep the figures as youthful as possible. The scheme to have full and secondary medallions, and inscribed books with the text, and the memorial inscription at the bottom.

Typical design: "incorporates the subject material for the first window, with the dominant medallion devoted to the Calling of Peter & Andrew to be fishers of men, and the smaller medallion symbolizing Jesus and the Rich Young Ruler (St. Luke 18:18), as a significant commentary on the central theme. The open book of the Scriptures

would bear the text from the 25th verse of St. Matthew's 16th Chapter, "For whoever would save his life will lose it, and whoever loses his life for my sake will find it."

"...a lovely balance of pure blue and ruby, with the blue predominating but very well foiled by the passages of ruby and gold. We plan an interesting counterchange of ruby and ~~gold~~ blue in minor positions through the group of four, to add pleasant variety. Through all runs the very essential thread of silver accented with gold and green. While these windows are designed in full color, the gold and silver passages prevent them from becoming somber and they will sparkle and glow in all lights. "... There will be a counterchange of the dominant colors, but the general color scheme will carry through and unite the group."

\* ~~and thy neighbor as thyself~~. Luke 10:27.  
Small Medallion - Christ at Gethsemane.

~~truth. John 4:24. Awaiting word on text~~  
Small medallion - Widow's Mite picture.

\*\*\*"I can do all things through Christ who strengtheneth me." (Philippians 4:13).

~~What doeth the Lord require of thee but to do justly and to love mercy and to~~  
~~is your spiritual worship. Romans 12:1 walk humbly (Micah 6:8)~~

Small Medallion - Paul and Timothy (as teacher and pupil perhaps).

~~Use the New Revised Standard Version.~~

(For confirmation see Mrs. Frazer's letter of March 10, 1947, with attached list).

1. To symbolize Unreserved Commitment to Christ and His Kingdom.  
(Service and its Reward).

Dominant Medallion - The Calling of Peter and Andrew to be Fishers of Men. (Matthew 4:18-19).

Text: "For whosoever will save his life shall lose it; and whosoever will lose his life for my sake shall find it." (Saint Matthew 16:25) (King James Version).

Secondary Medallion - The Rich Young Ruler.

2. Bible Study and Prayer - Understanding the Christian Faith.  
(The Fatherhood of God and the Brotherhood of Man).

Dominant Medallion - The Sermon on the Mount

Text: "Thou shalt love the Lord thy God with all thy heart, and thy neighbour as thyself." (Saint Luke 10:27). (King James).

Secondary Medallion - Christ at Gethsemane.

3. Worship and Service in the Church  
(Prayer and Service).

Dominant Medallion - Jesus in the Synagogue (Luke 4:16).

Text: "O come, let us worship and bow down; let us kneel before the Lord our maker" (Psalm 95:6). (King James).

Secondary Medallion - Widow's Mite

4. Growth in Christian Character - Stewardship  
(Strength and Courage through Divine Help).

Dominant Medallion - Parable of the Talents

Text - "I can do all things through Christ who strengtheneth me". (Philippians 4:13) (King James Version). (See Mrs. Frazer's letter of March 10, 1947, about using "Who" instead of "which".)

Secondary Medallion - Paul and Timothy

