

*Just  
free sent*

64 3200  
2524  
50  
64  
3000

CHARLES J. CONNICK : DESIGNER AND WORKER IN STAINED AND  
LEADED GLASS : NINE HARCOURT STREET, BOSTON, MASSACHUSETTS

City or Town West Newton, State Mass. No. 2710  
Church Second Church. Congregational. Date of Set. 25000 and 25500  
Donor and Completion 50 158  
Address Septembre 10, 1950.

Architect Tel. Big. 2690. Quality of \$3200 (\$50. per ft.).  
Denomination and Minister The Rev. R. Clyde Yarbrough. Highland and Margin Sts. Glass  
Footage 60 feet. sight  
Sizes, full 186  
Ventilators Set by 594.44

Position in Church Window in south transept, next to Reynolds window.  
Height from floor 7' Protec- Groove Stone  
tion Glass Rabbet Wood  
Points of compass  
Quality of light South.

Inscription None

Design wanted Staging  
Shipping address Blue-prints  
Received

Bill to Templets

Photos of Cartoons Mailed

General Information "The Peace Window."

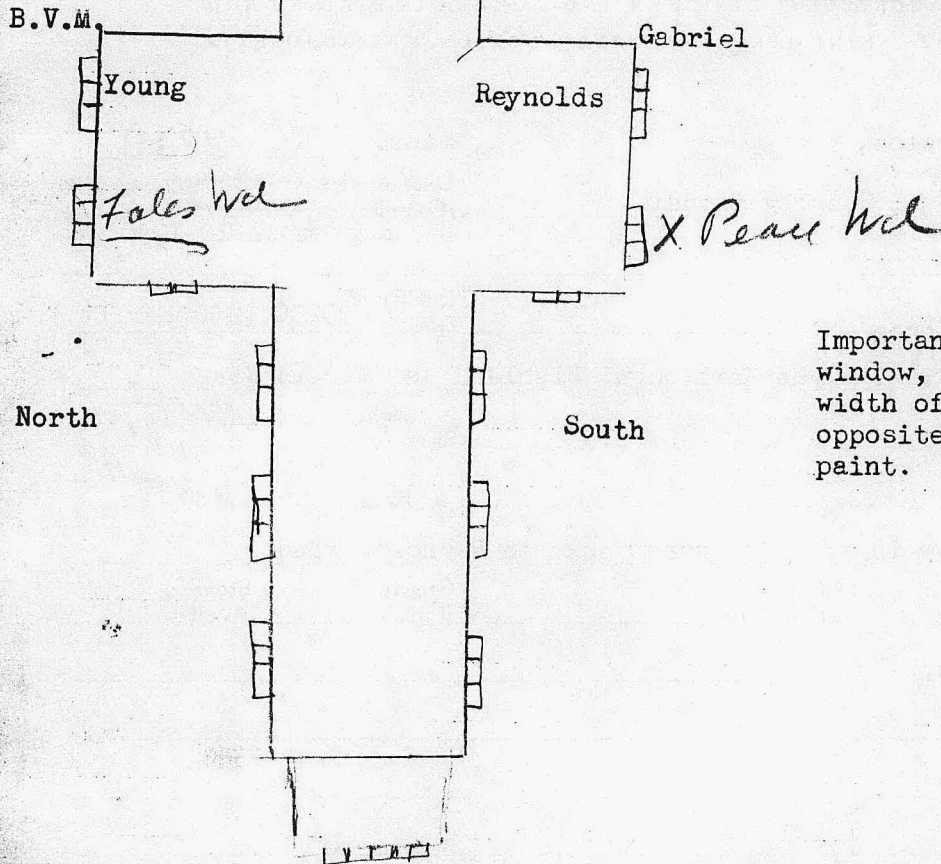
They would like to avoid figure compositions in the side panels if we think that is reasonable. The minister would like to symbolize a Great burst of light from the Sun, at one side; and the Cross at the other side, with the central figure of Christ without a halo.

He thought it should be big to pretty well fill the lancet except the base, but he feels it would crowd the panel. We advocated a smaller figure that would not crowd the lancet, and down below - the idea of a little child leading all kinds and conditions of people, perhaps with the two contrasted animals - the savage and the mild.

The theme they have in mind is "Peace I leave with you, my peace I give unto you: not as the world giveth, give I unto you. Let not your heart be troubled, neither let it be afraid." (St. John 14:27)

For addresses of those to be notified as window progresses, see other side.

Oct. 25, 1948. "We have changed the position of the hands, as was suggested, and have also added Angels of Praise and Prayer in the lower portions of the side lancets."



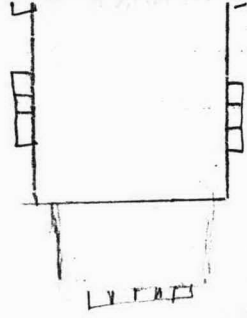
Important: When we install this window, be sure to cut down the width of the blue line in the opposite window with oil varnish paint. 6/16/50.

**The Peace Window  
in the south transept  
Second Church of West Newton.**

This window is designed as a great colorful symbol of peace. The theme is announced across the lower portions of the lancets, in the text from the fourteenth chapter, twenty-seventh verse of Saint John: "Peace I leave with you, my peace I give unto you: not as the world giveth, give I unto you."

At the center is the dominant figure of Our Lord with one hand raised in a gesture of admonition and the other <sup>as if blessing</sup> ~~held forth in welcome~~. He is robed in garments of ruby and white, traditional color symbols of divine love, purity, and peace. Above him is the descending dove of the Holy Spirit.

At the left is the Sun in a great burst of light, balanced by the luminous cross in the opposite panel, both emanating beams of radiant light



The Peace Window  
in the south transept  
Second Church of West Newton.

This window is designed as a great colorful symbol of peace. The theme is announced across the lower portions of the lancets, in the text from the fourteenth chapter, twenty-seventh verse of Saint John: "Peace I leave with you, my peace I give unto you: not as the world giveth, give I unto you."

At the center is the dominant figure of Our Lord with one hand raised in a gesture of admonition and the other <sup>as if blessing</sup> ~~held forth in welcome~~. He is robed in garments of ruby and white, traditional color symbols of divine love, purity, and peace. Above him is the descending dove of the Holy Spirit.

At the left is the Sun in a great burst of light, balanced by the luminous cross in the opposite panel, both emanating beams of radiant light and warmth.

In the lower portion of the side panels are angels of praise and prayer bearing trumpet and censer.

In the quatrefoil at the top is the ancient symbol of the globe surmounted by the cross signifying Christ's triumph over the evils of the world.

The decorative foliated vine forms enriching the fields, suggest the ivy and olive of peace in contrast to the sacramental grape and wheat pattern of the window in the opposite transept.

~~Across the base a space has been provided for a possible memorial~~  
inscription.



JOB NUMBER 2710

9 Harcourt Street, Boston, Mass.

PRICE \$3200 (\$50 per foot).

FOOTAGE 64 feet

CITY AND STATE West Newton, Massachusetts.

BUILDING Second Congregational Church.

PERSONS INTERESTED The Rev. Yarbrough, Rector.

ARCHITECT

NUMBER OF WINDOWS One

EXPOSURE South.

POSITION OF WINDOWS Window in south transept, next to Reynolds window.

HEIGHT FROM FLOOR 7 feet.

PROTECTION GLASS

VENTILATORS Lam 1 x 3. in place

SCALE OF SKETCH Inch

SET IN STONE

WOOD

IRON

BLUE PRINTS RECEIVED

MEMORIAL INSCRIPTION None

TEMPLATES RECEIVED

OTHER BIBLICAL TEXTS

DESIGN WANTED X

DESIGN ACCEPTED X

PHOTOGRAPHS OF CARTOONS SENT

ACCEPTED

DATE OF COMPLETION September 10, 1950 - sure.

SUBJECT MATERIAL: The Peace Window.

This window is designed as a great colorful symbol of peace. The theme is announced across the lower portions of the lancets, in the text from the fourteenth chapter, 27th verse of S. John: "Peace I leave with you, my peace I give unto you: not as the world giveth, give I unto you."

At the center is the dominant figure of Our Lord with one hand raised in a gesture of admonition and the other as if in blessing.

GENERAL INFORMATION: He is robed in garments of ruby and white, traditional color symbols of divine love, purity, and peace. Above him is the descending dove of the Holy Spirit. At the left is the Sun in a great burst of light, balanced by the luminous cross in the opposite panel, both emanating beams of radiant light and warmth.

In the lower portion of the side panels are angels of praise and prayer bearing trumpet and censer.

In the quatrefoil at the top is the ancient symbol of the globe surmounted by the cross signifying Christ's triumph over the evils of the world.

The decorative foliated vine forms enriching the fields, suggest the ivy and olive of peace in contrast to the sacramental grape and wheat pattern of the window in the opposite transept.

IMPORTANT: BEFORE BEGINNING WORK, EACH CRAFTSMAN IS TO CAREFULLY READ AND INITIAL THIS SHEET. DESIGNER

LAYOUT DEPARTMENT

CARTOONIST

INSCRIPTIONS, SYMBOLS, ETC. CHECKED BY DRAFTING ROOM

CUTTER

PAINTER

GLAZIER

INSCRIPTION CHECKED IN GLASS BY

PHOTOGRAPHER

Glasswork taken