

CHARLES J. CONNICK : DESIGNER AND WORKER IN STAINED AND  
LEADED GLASS : NINE HARCOURT STREET, BOSTON, MASSACHUSETTS

*now 2 1/2 ft  
if possible*

City or Town Philadelphia, Pa. ✓ State Pa. No. 2212 ✓  
Chestnut Street, West of 21st Street. ✓ Date of November 28, 1940 ✓  
Church First Unitarian Church. ✓ Completion                       
Donor and Interested: Mrs. Robert L. Hilles, 4530 Adams Av. Frankford, Phila, Pa.  
Address Women's Alliance. ✓  
Architect                      Quality of Glass \$1200. (\$42.86 per ft.) ✓  
Denomination Unitarian. ✓  
and Minister Rev. Frederick R. Griffin, D.D. 2125 Chestnut St. Phila. ✓  
Footage 28 square feet. ✓ sight Sizes, full                       
Ventilators None ✓ Set by                       
In the Joseph Priestly Chapel. ✓  
Position in Church (East nave, third from altar.) ✓  
Height from floor 37 inches. ✓ Protec- Groove Stone  
tion Glass Rabbet Wood  
Points of compass                      ✓  
Quality of light East nave, ~~third from altar~~ center group. ✓  
Inscription 1876 In memory of Edith Bell Griffin 1939." ✓

Well before June 20, last meeting of  
Design wanted Committee. Staging                       
Blue-prints  
Shipping address                      Received                     

Bill to                      Templets                     

Photos of Cartoons Mailed                     

General Information Subjects: "Saint Francis with symbols of sun, etc." ✓  
"Saint Christopher, symbols of travel - foreign  
lands, etc."

C.J.C. said, after Dr. Griffin's visit; "I got the impression that it  
doesn't want to be too brilliant - to knock the stuffing out of that  
dark window by D'Ascenzo."

They have a queer collection of windows in the main church, several Holidays,  
some opalescent; one opalescent with a direct copy of one of the Reynolds'  
"Graces" at Oxford. It is a little Chapel - about 19 feet wide and more than  
twice that long - dark wood paneling, with yellowish plaster above, and blue

For addresses of those to be notified as window progresses, see other side.

ceiling between the beams. A smaller pair of panels near the altar are by D'Ascenzo - single figures on grisaille - rather dark yellow and very heavily painted. Makes the altar very dark. Dr. Griffin doesn't care for them. Then there are three pairs on the same side of the Chapel - the only other window. All east - facing a busy street and a playground across it, so they feel screening is essential.

Mrs. Griffin was a great traveler and lover of flowers and Nature. Dr. Griffin has been thinking about what Mrs. Griffin liked - and these are the notes of the thing that symbolize her -

The house, or home

The garden

Books and music

Weaving (a loom).

Cathedrals (Ecclesiastical Architecture).

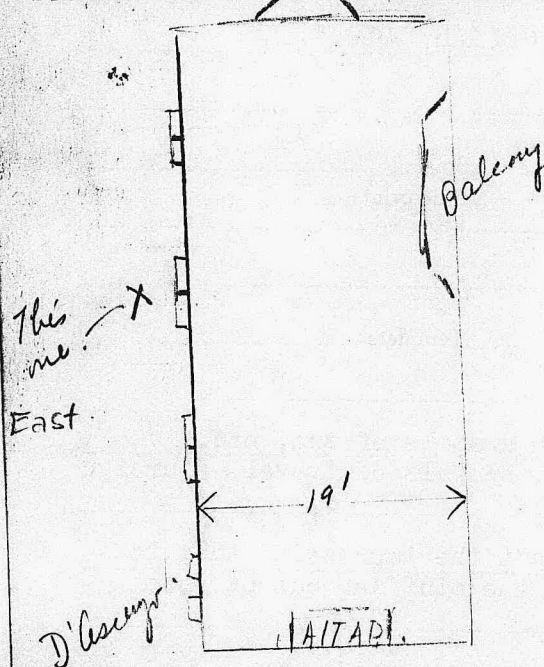
The Church (New England Meeting House).

Family and Children.

Travel.

Dr. Griffin agreed that a fairly light, but very colorful window, was what they wanted. There will be a flood of light from windows at either side, which should be subdued, but Dr. Griffin thinks if we get in one window, the others will soon be given. We should have in mind related figures there.

See Booklet about the church, and photograph of interior, also picture of Griffin Summer home in Petersham.



IMPORTANT :Have good brilliant blues - pure brilliant, radiant glass.

Design for the Edith Bell Griffin Memorial Window,

For the Joseph Priestly Chapel, First Unitarian Church, Philadelphia.

This window is designed in color and light to commemorate, in significant symbols, the memory of one who, like Saint Francis, loved all created things and man's good works in nature.

Saint Christopher, patron of travelers, is represented as the dominating figure, balancing Saint Francis of Assisi. A flight of birds and the fishes to whom Saint Francis preached eloquent sermons, are represented near him, together with Brother Sun "who gives the day and lightens us therewith". Saint Christopher bears the Christ Child and holds the traditional palm which he uprooted, to serve as a staff to steady him against the turbulent stream.

Saint Raphael, protector of travelers, with his symbols - the fish and Pilgrim's staff, is represented in the tracery member above the lancets.

Developing the central theme of nature and service, smaller symbols are represented as the flowering of the growing vine - or tree of life, which ascends through the silvery field of each panel.

Below Saint Francis is a symbol of the cultivation of nature - the garden, balanced by a primitive symbol of travel, by horse. In the lower panels are symbols of weaving - a figure at the loom; music - the organ; open book; child jumping rope; the protection of home and the guiding inspiration of the Church.

Across the base is the inscription:

1876 In Memory of Edith Bell Griffin 1936.