

6345

Administrative Memorandum A-67-1

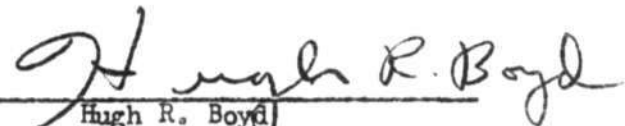
Page 1 of 1

Project Whirlwind  
Servomechanisms Laboratory  
Massachusetts Institute of Technology  
Cambridge, Massachusetts

LAB. DIV. 6  
DOCUMENT ROOM  
DO NOT REMOVE  
FROM  
THIS ROOM

SUBJECT: NON-STAFF ORGANIZATION CHART  
To: Non-Staff Supervisors  
From: Hugh R. Boyd  
Date: October 20, 1948

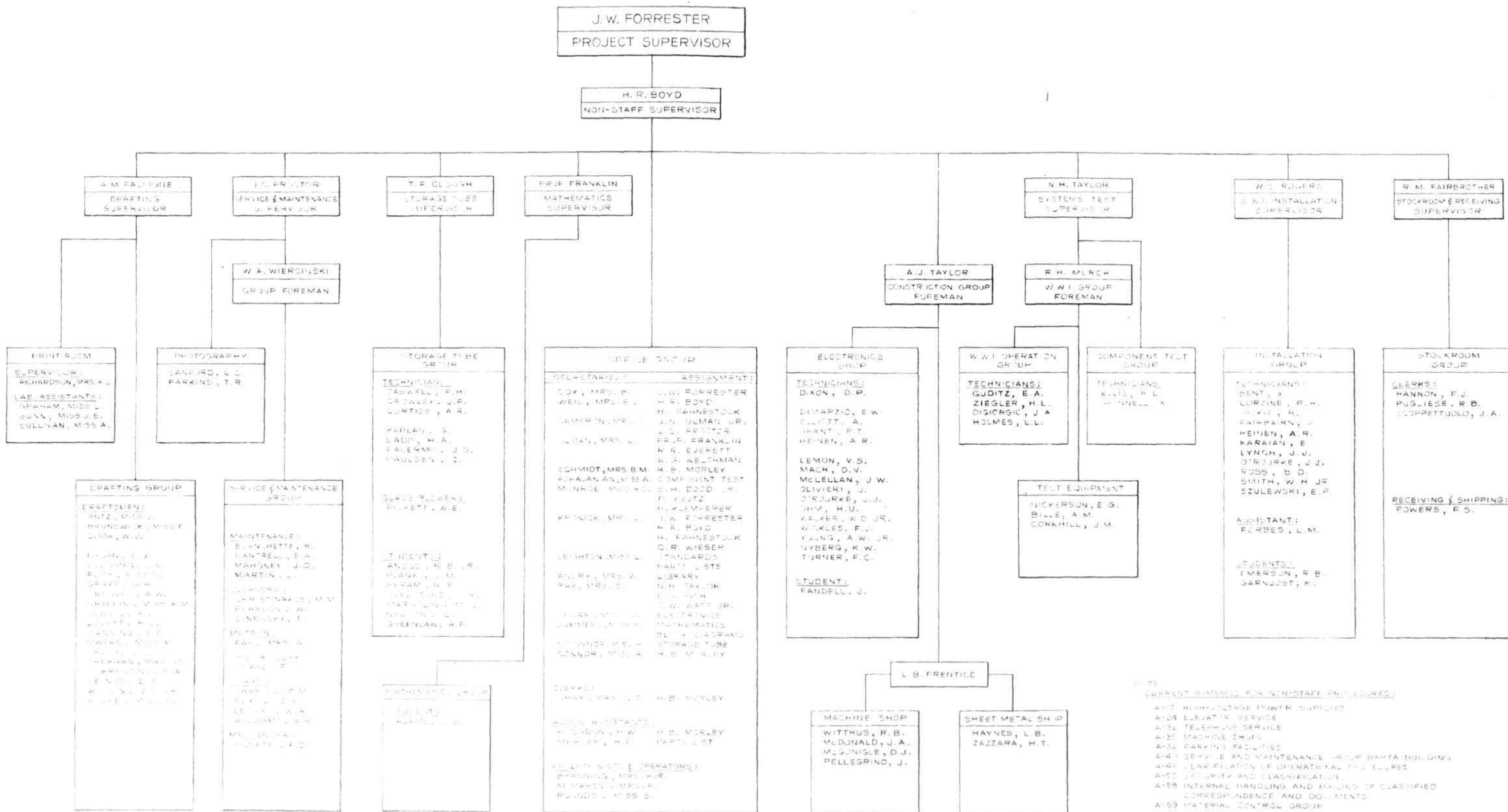
The attached non-staff organization chart has been prepared to show non-staff assignments and list the supervisors under which these assignments belong. The chart is corrected to October 20, and will be revised periodically as needed. Mrs. Weil will keep an up-to-date version of the chart and your help will be appreciated in notifying her of changes in assignments.

  
Hugh R. Boyd

Distribution List:

J. W. Forrester	T. F. Clough
R. R. Everett	R. L. Ellis
H. Fahnestock	H. Ladd
C. W. Watt	E. G. Nickerson
H. B. Morley	L. B. Prentice
J. A. O'Brien	R. B. Witthus
C. R. Wieser	L. B. Haynes
P. Youtz	B. Cox
P. Franklin	E. J. Weil
A. M. Falcione	R. McMahon
J. C. Proctor	H. F. Mercer
S. H. Dodd	K. J. Richardson
W. S. Rogers	L. C. Sanford
H. E. Taylor	
R. W. Fairbrother	
T. Leary	
W. A. Wiercinski	
F. A. Caswell	
J. N. Ulman	
A. J. Taylor	
R. H. Murch	

APPROVED FOR PUBLIC RELEASE. CASE 06-1104.



- NOTE:  
CURRENT ASSIGNMENTS FOR NON-STAFF PROCEDURES:
- A-17 HIGH-VOLTAGE POWER SUPPLIES
  - A-24 ELEVATOR SERVICE
  - A-32 TELEPHONE SERVICE
  - A-35 MACHINE CHAIRS
  - A-36 PARKING FACILITIES
  - A-40 SERVICE AND MAINTENANCE GROUP (BARTA BUILDING)
  - A-41 CLEARIFICATION OF OPERATIONAL PROCEDURES
  - A-52 SECURITY AND CLASSIFICATION
  - A-58 INTERNAL HANDLING AND MAILING OF CLASSIFIED CORRESPONDENCE AND DOCUMENTS
  - A-59 MATERIAL CONTROL GROUP
  - A-61 SECRETARIAL PROCEDURES
  - A-62 NON-STAFF WORK MANUAL
  - M-272 TERMINATIONS