



IAP on Athena

The IAP Office is happy to announce that the IAP Guide is available via Project Athena. By using simple commands, people can receive information according to topic, schedule or person's name.

A companion to the printed Guide, the on-line service now makes it easier for people to plan their January program or to recall specific information.

The on-line Guide is limited now to Athena account holders but eventually will be available throughout the Institute.

For directions, users should type the command "man iap."

Note: The deadline for new or changed listings for the IAP Timetables is 5pm today (Wednesday, Jan. 8) in the IAP Office, Rm 7-108.

It's different

An abbreviated Institute Calendar will be found on page 2 of this week's paper, leaving the centerfold to be filled with the IAP Timetable. Classified Ads follow, rather than precede Positions Available. Both changes were made to improve the visual coherence of the paper. Bear with us.

King observance

Events commemorating the birthday of Dr. Martin Luther King Jr. on January 15 will be held or may extend into normal working hours. Joan F. Rice, director of Personnel, has asked the cooperation of supervisors in releasing employees who wish to attend the events, whenever workloads permit.

LIS registration

Now is the time to register for spring classes in technical subjects at the Lowell Institute School. Classes will begin Monday, Feb. 3, and the deadline for registration is Friday, Jan. 24.

For a catalogue, listing spring classes, drop by the LIS Office, Rm E19-738 or call x3-4895.

Women's Health Fair

Nurses of the Medical Department have organized a Women's Health Fair to be held in Rms E25-111 and E25-117 Friday, Jan. 10 as part of IAP. The fair will include films, exhibits, talks, pamphlets and brochures. The film schedule is:

10am and noon—Seasons of Sexuality; 10:30am—At 99: A Portrait of Louise Tandy Murch; 11am—Death in the West (cigarette smoking); 11:30am—Pregnancy after 35; 12:30pm—A Family Talks about Alcohol, and 2pm—Menopause: Myths and Reality.

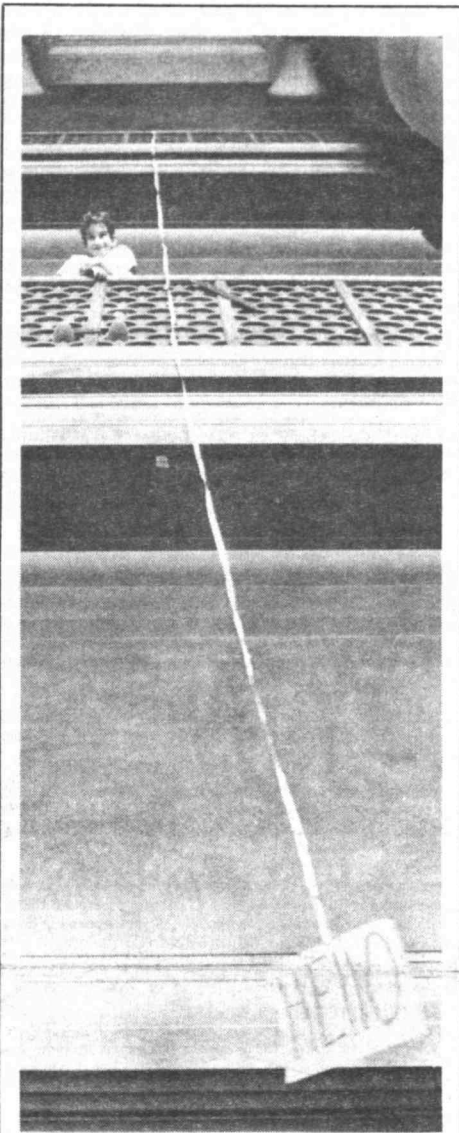
A question and answer session about alcohol, led by Ron Fleming of the Social Work Service, will follow the 12:30 film at 1pm.

The formal program will close with a talk, The Calcium Connection, by Barbara Cholakas, nutritionist in the Medical Department.

Open house

The Working Group of Support Staff Issues will hold an Open House Wednesday, Jan. 15, noon-1pm and Thursday, Jan. 16, 1-2pm in the Bush Room (10-105).

Members of the community are invited to visit and find out what the Working Group is already doing for MIT support staff and take part in deciding new topics you would like to see addressed. Come and talk about career development, performance evaluation, office automation, benefits, MITAC, physical fitness or whatever topics are of interest to you. Your ideas will be welcome.



What other way to begin a whole new year than with a really good Hello? There were plenty of smiles on January 2 when people returning after the holiday saw a jaunty Hello floating at the end of a 25-foot ribbon in Lobby 7 just above the entrance to the Infinite Corridor. How did it happen? Young Samir Lucas Randolph came to MIT that day with his mother, Judith Randolph, who works in the Architecture Department. Said Judith: "Samir told me he was making a poster. I said 'okay' and went on with my work. About 15 minutes later Tech Talk telephoned and told me they wanted to photograph my son's drop poster!" She said Samir is "9 going on 26." Samir hid in back of the columns to watch reactions. Jill Azling of the Committee on the Visual Arts happened to rush by and was overheard saying "Minimalist" under her breath. Samir made the ribbon by fishing "taffles" from his mother's wastepaper basket, taffles being a colloquial word for the perforated strips on either side of the formfeed paper used in computer printers. —Photo by Calvin Campbell

Powell wins Rhodes

An MIT graduate student whose home is in Canada has won a Rhodes scholarship for study at Oxford University in England.

He is Marc Powell of Quebec City, Quebec, who applied for the scholarship from his undergraduate school, the Universite Laval of Quebec City, where he received a BSc in engineering physics last May. He plans to obtain a master's degree and doctorate in electrical engineering at MIT.

At Oxford, where he also expects to receive a degree, he will study engineering, economics and management.

In all, 32 Americans and students from 17 other countries won the coveted scholarships for two or three years of expense-paid study at Oxford. The scholarships, first awarded in 1904, were established by the will of Cecil J. Rhodes, the British diamond and gold developer and colonial administrator.

Alzheimer/Down linkage studied

By SHARON DAVIS
Staff Writer

Alzheimer's Disease: An incurable brain disorder generally striking persons over 70 years of age, although a few contract it in their 50s. Victims experience loss of short-term memory, rapid decline of orientation, eventual loss of cognitive function and the ability to care for themselves. They are also antisocial. Alzheimer's can only be detected after death.

Down's syndrome: A disease marked by congenital defects, striking the fetus. Victims suffer moderate to severe mental retardation and may have heart defects. They are more liable to infectious disease and have a high infant mortality rate.

Despite these differing symptoms, Dr. Vernon Ingram, professor of biology, noted that the brains of Down's patients 35 years or older are known to resemble the ones from Alzheimer's. He has received a \$15,000 pilot grant from the National Institute of Health to investigate the relationship between Down's

syndrome and Alzheimer's at the developmental, cellular and biochemical levels. He has applied for a five-year grant to continue the project.

Assisting Dr. Ingram is Helen Moore, senior technical assistant, and two UROP students, James Koenig, a junior in applied biological science, and Dianne Parry, a junior in biology.

According to Dr. Ingram, those Down's victims who live longer will contract Alzheimer's disease. "All individuals suffering from Down's syndrome show a brain pathology equal to Alzheimer's disease as early as their middle to late 30s."

"We are trying to understand how Alzheimer's develops because we do not know when to intervene when trying to treat people. We do not know who will get Alzheimer's, but we know who is a Down's syndrome individual," he said.

To learn why the brain degenerates and where the disease begins, the Ingram team (continued on page 3)

Corporation's Wilson dies at 78

John J. Wilson of Marblehead and Barbados, formerly of Brookline, an industrialist who founded several successful companies, a yachtsman who sailed the Atlantic five times, a retired life member of the MIT Corporation, and a prominent Boston-area trustee, died December 31 at his home. He was 78.

Born in Boston in 1907, Mr. Wilson received bachelor's and master's degrees in business and engineering administration from MIT in 1929 and 1930. He became an outstanding leader in MIT alumni affairs, serving the Institute in a number of capacities, including that of Secretary of the Corporation and President of the MIT Alumni Association. He organized Doelcam Corporation in 1946



and served as its president and chairman until 1955. With the merger of Doelcam and Minneapolis-Honeywell Regulator Company, he became vice-president of Minneapolis-Honeywell in 1954 and, the following year, president of its electronic data processing subsidiary, Datamatic Corporation. He retired from those positions in 1964 and was the senior director of Minneapolis-Honeywell in point of service when he retired from the company's board of directors in 1972.

Before founding Doelcam company, which was located on Soldier's Field Road near Harvard on the Charles River, Mr. Wilson had worked on quality control for Crucible Steel in Pittsburgh, in production for the Waltham Watch Company, in sales for the Terrell Machine Company and as general purchasing agent for Sperry Gyroscope during the Second World War.

He served as an officer, director and trustee of many industrial, civic and charitable institutions, among them The State Street Bank (continued on page 8)

Jackson to speak at King Day

The first black woman to receive a PhD at MIT will deliver the 12th annual Martin Luther King Jr. address Wednesday, Jan. 15, in Kresge Auditorium at 12:30pm.

Dr. Shirley Ann Jackson, a research physicist at AT&T Bell Laboratories in New Brunswick, N.J., will speak on "Living the Dream: To Believe and Achieve."

Dr. Jackson, who was also the first black woman in the United States to receive a PhD in physics, specializes in particle physics. She is a director of the New Jersey Resources Corporation and a member of the New Jersey Commission on Science and Technology. She was a member of the MIT Corporation from

1975-85 and was recently elected vice president of the MIT Alumni Association. She is also on the MIT Visiting Committees for electrical engineering and computer science, physics and sponsored research.

After graduating from Roosevelt High School in Washington, D.C., as valedictorian, Dr. Jackson received the SB in physics in June 1968 and the PhD in September 1973 from MIT. She also attended the Theoretical Physics Summer School, University of Colorado, Boulder, in 1971 and the International School of Subnuclear Physics, Ettore Majorana, Erice, Sicily, in August 1973.

She was a founder and first cochairman of the MIT Black Students Union (BSU) which succeeded in increasing the number of entering black freshmen.

Dr. Jackson has been a guest lecturer at Fisk University, Nashville, Tenn.; a scientific visitor and lecturer at the Stanford Linear Accelerator Center, Stanford, Calif.; lecturer (continued from page 3)

Faculty endorses divestment

The MIT faculty, on a vote of 131 to 40 at the December 18 faculty meeting, urged the MIT Corporation to take every step possible to hasten the dismantling of apartheid, "including the divestment of holdings in those firms doing business in or lending to South Africa."

President Paul E. Gray, who presided at the meeting, said he would inform the Executive Committee of the Corporation of the vote.

"This vote," President Gray said, "is advisory to the Corporation and does not in itself constitute any change in MIT's investment policy."

The Executive Committee, which has the responsibility for any change in investment policy based on social considerations, is reviewing and will be discussing MIT's position on holdings linked to South Africa.

The resolution voted at the faculty meeting read: "We, the faculty of MIT, incensed at the repression and violence of the South African government, and believing that the Institute

and its trustees should take action to hasten the dismantling of apartheid and the achievement of full political rights for all South Africans, do urge the MIT Corporation to take every step possible to achieve these aims, including the divestment of holdings in those firms doing business in or lending to South Africa."

MIT's General Investments, including endowment, and other invested funds, currently amount to about \$930 million. About 18 per cent of that—about \$160 million—is invested in US corporations with operations in South Africa. The university does not invest in South African companies.

The faculty at the meeting also voted to endorse the goals of the Association of Concerned African Scholars Campaign to have the Teachers' Insurance and Annuity Association-College Retirement Equities Funds (TIAA-CREF) divest South Africa-related holdings.

THE INSTITUTE CALENDAR

January 8-19

Freshmen are encouraged to attend departmental lectures and seminars. Even when these are highly technical they provide students one means to learn more about professional work in a department and field.

MISS THE TECH TALK DEADLINE?

Put your announcement on the MIT Cable System. "Today at the Institute" runs 24 hours a day and can be viewed in Lobby 7, Lobby 10 and anywhere the cable is connected.

Simply submit announcement in writing to Rm 9-030. We prefer a day's warning, but faster action may be possible. Useful also for correcting errors, notifying about cancellations, and dealing with emergencies.

Note: If you have met the Tech Talk deadline, your announcement is automatically put on cable (except for exhibits and some multimeetings programs).

Seminars and Lectures Wednesday, January 8

Gallery Talk* - Dana Friis-Hansen, assistant curator, MIT Committee on the Visual Arts, Hayden Gallery *Nude, Naked, Stripped* Exhibit Program, 1pm, Hayden Gallery.

Thursday, January 9

The Psychology of Nakedness* - Roberta Apfel, psychotherapist, Hayden Gallery *Nude, Naked, Stripped* Exhibit Program, 1pm, Hayden Gallery.

Sunday, January 12

Male Images: Gay Imagery?* - representatives of Gays at MIT (GAMIT), Hayden Gallery *Nude, Naked, Stripped* Exhibit Program, 1pm, Hayden Gallery.

Tuesday, January 14

Feminism and the Body* - Ruth Perry, senior lecturer, literature and head, Women's Studies Program; Isabelle de Courtivron, associate professor, French, Foreign Languages and Literatures Section; Anne Wagner, assistant professor, history of art; representatives from Boston Women's Health Collective, authors of *Our Bodies, Ourselves*, Hayden Gallery *Nude, Naked, Stripped* Exhibit Program, 1pm, Hayden Gallery.

Wednesday, January 15

The Anthropology of Clothes* - Jean Jackson, associate professor, anthropology; Prof Samuel Jay Keyser, associate provost, Educational Programs and Policy and director Center for Cognitive Science, Hayden Gallery *Nude, Naked, Stripped* Exhibit Program, 1pm, Hayden Gallery.

Films

American Challenge* - Film of the intimate on-board story of seven solo sailors facing an ultimate challenge: the Observer Singlehanded Transatlantic Race, Jan 15, 7pm, MIT Museum.

Community Meetings

Alcoholics Anonymous (AA)** - Meetings every Tues, 12-1pm, Rm E23-364. For info call Ann, x3-4911.

Al-Anon** - Meetings every Fri, noon-1pm, Health Education Conference Rm E23-297. The only requirement for membership is that there be a problem of alcoholism in a relative or friend. Call Ann, x3-4911.

Alcohol Support Group** - Meetings every Wednesday, 7:30-9am, sponsored by MIT Social Work Service. For info call Ann, x3-4911.

Narcotics Anonymous* - Meetings at MIT, every Mon, 1-2pm, Rm E23-364 (MIT Medical Dept). Call 569-8792.

MIT Faculty Club** - The Club is open Mon-Fri. Luncheon hours: noon-2pm; dinner hours: 5:30-8pm. For dinner and private party reservations, call x3-4896 9am-5pm daily.

Commodore Users Group** - meets monthly at noon time. For more info, call Gil, x8-3186 Draper.

Working Group of Support Staff Issues Open Houses** - Jan 14, 12-1pm; Jan 16, 1-2pm, Rm 10-105.

Women's Forum Self Defense Class** - Women's Safety Education Program, Jan 13, 12pm, Rm 10-105.

Craft Group** - sponsored by Wives' Group, meets every Thurs, 2-4pm, Student Ctr Center Lounge or Student Ctr Rm 407. Please call x3-1614 to check on location of meetings.

The Language Conversation Exchange** - sponsored by the Wives' Group, seeks persons interested in practicing languages with a partner. Many international students and spouses wish to practice English with a native speaker. If you are willing to help an international visitor practice English and/or interested in practicing or learning a foreign language with a native speaker, call the secretary to the Wives' Group, x3-1614.

Women's League Quilt and Needlework Display** - Jan 17, 12-5pm, Hayden Library (14S-100). Bring examples of needlework or demonstrate a skill. Call Nancy Whitman, x3-6040 or Beth Harling, 749-4055 for information.

MIT Women's League Informal Needlework Group** - Wednesday lunchtime gatherings, 9:30am-1:30pm, Rm 10-340. Bring sack lunch, projects, swap ideas. Coffee & tea served. Meeting dates: Jan 8, 22, Feb 12, 26, March 12, 26, April 9, 23, May 14, 28. For more info, call Lillian Alberty (491-3689), Nancy Whitman (x3-6040) or Beth Harling (749-4055).

Social Activities

GAMIT Sunday Discussion Meeting* - Gays at MIT, Suns, 5pm, GAMIT Lounge, Walker Memorial Rm 50-306. Dinner served at 6:30pm.

GAMIT Study Break* - Gays at MIT, Thurs, 9pm, GAMIT Lounge, Walker Memorial Rm 50-306.

Movies

The Shining** - LSC Movie, Jan 8, 6:30&10pm, Rm 26-100. \$1/MIT-Wellesley ID.

Diamonds are Forever** - LSC Movie, Jan 10, 7&10pm, Kresge Auditorium. \$1/MIT-Wellesley ID.

Monty Python Live at the Hollywood Bowl** - LSC Movie, Jan 11, 7&9:30pm, Rm 26-100. \$1/MIT-Wellesley ID.

Jesus Christ Superstar** - LSC Movie, Jan 12, 7&10pm, Rm 26-100. \$1/MIT-Wellesley ID.

The Man Who Fell to Earth** - LSC Movie, Jan 15, 7&10pm, Rm 26-100. \$1/MIT-Wellesley ID.

Harold and Maude** - LSC Movie, Jan 17, 7&9:30pm, Rm 26-100. \$1/MIT-Wellesley ID.

Lawrence of Arabia** - LSC Movie, Jan 18, 8pm only, Kresge Auditorium. \$1/MIT-Wellesley ID.

Fame** - LSC Movie, Jan 19, 7&10pm, Rm 26-100. \$1/MIT-Wellesley ID.

Music

Chinese Intercollegiate Choral Society* - Meets Suns, 3-5pm, Rm W20-491. Currently rehearsing Chinese folk songs. Free voice lessons and music theory class, 1pm.

Theater

The Amazing Dacri** - Steve Dacri, Magician, Jan 16, LSC Seminar - 3pm, Rm 26-100; **Magic Show** - 8pm, Kresge Auditorium. \$1/MIT-Wellesley ID for either or both.

Dance

Western Square Dancing* - Tech Squares Club Level dancing and rounds, Tues, 8-11pm, Student Ctr 2nd Floor. Dennis Marsh, club caller & instructor; Veronica McClure, club cuer. Free intro night for Beginners, Jan 28; monthly dance, Fri, Jan 31 - Mayo/McClure plus Level.

MIT Contemporary Dance Club* - Cynthia Mallick, instructor, **Aerobix**, M, 7-8:15pm, McCormick Gym, W, 8:15-9:30pm, T-Club; **Jazz I**, M, 8:30-10pm, T-Club; **Jazz II**, W, 6:30-8pm, McCormick Gym. Fee: \$3/class, \$30/11 classes. Info: call 723-7081.

Children's Dance Classes** - Pamela Day, instructor. Creative Movement/Modern Dance classes for children ages 3-9. We are taking a break for the remainder of December and all of Jan. Classes begin in Feb on Fri afternoons. For info, call after Jan 25 - Pamela, x3-5791, T/Th mornings or 648-4838 eves/wkends.

MIT Folk Dance Club* - weekly dancing-Sundays, International Dancing, 7:30pm, Student Center Sala de Puerto Rico; Tuesdays, Balkan and Western European Dancing, 7:30pm, Rm 407 Student Center; Wednesday, Israeli Dancing, 7:30pm Sala de Puerto Rico.

Yoga* - ongoing classes in traditional Hatha and Iyengar style. Beginners: Mon, 7:20pm; Intermediates: Mon, 5:45pm. For information call Ei Turchinetz, 862-2613.

Exhibits

COMMITTEE ON THE VISUAL ARTS
Albert and Vera List Visual Arts Center
Jerome & Laya Wiesner Building
20 Ames Street

Hayden Gallery - *Nude, Naked, Stripped*. Examines the varied attitudes to the body without clothes; its eternal sensuality, its vulnerability in nakedness and the horror of its violation. The issues which surround its depiction - artistically, culturally and psychologically - discussed in accompanying 80-page catalog published by the CVA, through Feb 4. See Educational Programs schedule under *Seminars and Lectures*.

THE MIT MUSEUM

MIT Museum Bldg - **Minor White: Photographs**, 102 prints dating from the 1930s to 1968, through March 1986. **Red Weights**: Sculptor Carol Keller and painter Kathleen Soles use a variety of materials to explore spatial ambiguity as a metaphor. Through Jan 31, 1986. **Gjon Mili '27: A Tribute**, Born in Rumania, world famous photographer Gjon Mili studied electrical engineering at MIT and pioneered in the use of electronic flash and multiple exposure photographs. In 1938 he began doing stories for Life magazine, ongoing. **Of Aerostatic Machines: Early Ballooning in France and Britain**, Prints from MIT's Vail Collection illustrate the development of ballooning as a science and sport including fanciful inventions for steering balloons, and aerial views of Paris and other cities, ongoing. **Light Sculptures by Bill Parker '74**, A synthesis of scientific knowledge and artistic composition gives expression to these changeable, touchable plasma sculptures, ongoing. **Physics at the Laboratory for Nuclear Science: 35 Years at LNS**, through Feb 28. Hours: Weekdays 9am-5pm, Saturdays 10am-4pm.

Compton Gallery - **Piece By Piece**, Works by Italian architect Renzo Piano 1964-84, MIT Dept of Architecture exhibit, through Jan 11, 1986. Hours: Weekdays 9am-5pm, Saturdays 10am-4pm.

MIT Activities Committee

MITAC, the MIT Activities Committee offers discount movie tickets for General Cinema (\$2.50), Showcase and Sack Theaters (\$3.00). Tickets are good 7 days a week, any performance.

Tickets may be purchased at MITAC Office, Rm 20A-023 (x3-7990), 10am-3pm. Mon through Fri and Lobbies 10 and E18 on Fri, 12-1pm. Lincoln Lab employees may purchase tickets in Rm A-270 from 1-2pm, Tuesday through Friday only. Check out our table of discounts for camping, dining, musical and cultural events available to you through MITAC and MARES (Mass Assoc of Recreation and Employee Services).

The Loon and Heron Theatre Presents *What's Inside My Magic Trunk?* Sat, Jan 18, 1pm, Rm 10-250. Back by popular demand, the highly acclaimed Loon and Heron Theatre presents this all-new play based on children's own writings. Lively entertainment for children in grades K-3. Tickets: \$2/pp, available in Rm 20A-023.

Sports

HOME EVENTS: Jan 11: Wrestling vs Lowell, 1pm; Squash vs Bates, 2pm; M's Ice Hockey vs Hawthorne, 2pm. Jan 13: W's Basketball vs Coast Guard, 7pm. Jan 14: Squash vs Dartmouth, 4pm; M's Basketball vs Bowdoin, 7:30pm. Jan 15: M's Ice Hockey vs Gordon, 7pm. Jan 16: Squash vs Colby, 4pm. Jan 17: M's Basketball vs Skidmore, 7pm. Jan 18: M's Gymnastics vs Yale, 1pm; Indoor Track vs Coast Guard, 1pm; M's Basketball vs Coast Guard, 2pm; M's Swimming vs Southern Conn State, 2pm; M's Ice Hockey Ben Martin Invitational, 2pm.

*Open to the public
**Open to the MIT community only
***Open to members only

Send notices for Wednesday, January 15 through Sunday, January 26, to Calendar Editor Rm 5-111, before noon, Friday, January 10.

INSTITUTE NOTICES

* - Open to public
** - Open to MIT Community only
*** - Open to members only

Announcements

Serials in the MIT Libraries, 26th Ed - Microfiche listing published, three times a year, of approximately 22,000 titles includes information on holdings, dates, call numbers, and title changes. The 26th edition contains over 300 new titles and is published in two sections: 1) an alphabetical list (8 fiche) and 2) a keyword index (8 fiche). *Prepayment required*. Price: \$20; \$5/MIT staff and students. Send check payable to MIT to Office of the Director, Rm 14S-216.

Free Museum of Science Admission for MIT Students - With MIT student ID, provided by MIT chapter of Tau Beta Pi, the Engineering National Honor Fraternity. Also, reduced admission to special exhibits.

MIT Hunger Drive Food Drive - We need non-perishable, unopened foods for Boston's less fortunate. Ongoing collection all day and night at drop-off boxes in Lobby 7, Walker, McGregor desk.

Advisory Committee on Shareholder Responsibility (ACSR)** - Meeting to discuss issues related to MIT's investments in corporations with activities in South Africa, Jan 8, 12:30pm, Rm 10-300 (Maclaurin Rm). For further information, contact the secretary of the ACSR, Walter Milne, x3-5278, Rm 5-208.

Rune - The magazine of arts and literature at MIT is now accepting submissions of prose, poetry and graphics for its 11th anniversary issue. Three copies of written submission may be sent to *Rune*, Rm 14E-310. Special arrangements for pick-up of graphics submissions may be made with Don (247-2740) or Olga (x5-6563 dorm). All work will be returned if requested. Deadline: Feb 23, 1986.

Arts Hotline - Recorded information on all arts events at MIT may be obtained by dialing x3-ARTS. Material is updated every Monday morning.

Nightline** - a student-run hotline open every evening of the term, 7pm-7am. If you need information about anything or you just want to chat, give us a call. We're here to listen. x3-7840.

Faculty Members - Technology Review would like to hear about books being published by MIT faculty members. Please notify us, as far in advance as possible, of your upcoming book. Technology Review, Rm 10-140, x3-8250.

Club Notes

WMBR** - is looking for students interested in radio and technical work. Contact Eli Polonsky, x3-4000. Leave name and phone number.

MIT Student Cable Programming Group** - Looking for students interested in programming the MIT Cable Television channels. Contact Randy Winchester, x3-7431.

Tool & Die - MIT's humor magazine** - meets every Weds, 7pm, Rm 50-309 (Walker). Everyone welcome.

Student Center Committee (SCC)** - Has fun every Sunday, 7pm, Student Ctr Center Lounge. Do you? Call x3-3916 anytime for more info.

MIT Student Duplicate Bridge Club* - Bridge games every Sat, 7pm; every Thur, Sun & Mon, 6:30pm, \$75 entry fee, Rm 407, Student Center. Lessons free w/entry at 6:15pm from Bridge Senior Masters. No partners necessary, all welcome.

MIT/DL Bridge Club* - Duplicate bridge, Tues, 6pm, Student Center Rm 349. ACBL masterpoints awarded; come with or without partner, newcomers always welcome. Special tournaments monthly. Info call Gary Schwartz, x8-2459 Draper, or Mark Dulcey, 272-8428. Admission: \$.75/students, \$1.50/non-students.

MIT Table Tennis Club** - Meets Fri, 8-10pm; Sat, 6pm, T-Club Lounge. Info: Hoang Do, x3-2843.

MIT Go Club** - Meets M/Th, 5-7pm, Rm NE43 3rd flr Playroom. Played the ancient oriental game of skill. Knock to get in if the door is locked.

MIT Hobby Shop** - Complete supervised facilities for wood-working and metalworking, Rm W31-031, M-F, 10am-6pm; Wed, 10am-9pm. Fees: \$15/term students; \$25/term community. Info, x3-4343.

MIT Yoga Club* - Rejuvenate your mind and body with Kundalini Yoga, the science of awareness, M/Th, 5:10-6pm, outside Burton Dining Hall. Beginners welcome. Info: Fred Martin or Jeff Tollaksen, 247-0506 or x3-3157.

MIT Aikido Club** - meets Mon-Fri, 5:30pm, DuPont exercise room. Aikido is a non-competitive Japanese martial discipline. Beginners welcome.

MIT Outing Club* - Camping, cycling, climbing, canoeing, cabins: meets M/Th, 5-6pm, Student Center Rm 461. Also, see our bulletin board in "Infinite Corridor" next to Athena.

MIT Wu Tang Club* - teaches northern Chinese kung fu, Tues & Thurs, 8pm, Burton Dining Hall; Sat, 10am, Athletic Center. Beginners welcome. For info call Meilin Wong, x5-8713 dorm.

MIT Tae Kwon Do Club** - Tae Kwon Do is a Korean martial art. Meetings Sundays, 4pm, T-Club Lounge; Mon-Wed, 6pm, Burton Dining Hall; Fri, 6pm, T-Club Lounge. For info call In Ho Kim, 266-2827.

Scuba Club** - The club sponsors dives throughout the term. Call scuba locker (x3-1551) for info and equipment rentals. For more info contact Dave Summa, x3-6464 or Mike Fox 492-4407.

MIT Guild of Bell Ringers* - meets Mondays, 6:30-9pm, 2nd floor Lobby 7, for change ringing on handbells. We also ring the tower bells at Old North Church. Beginners are welcome. Contact Steve Costenoble, x3-3664 for more information.

Religious Activities

The Chapel is open for private meditation 7am-11pm daily.

Christian Science Organization at MIT* - Weekly Testimony Meeting, Thurs, 5:45pm, Rm 4-145.

Tech Catholic Community* - Roman Catholic Masses: Suns, 9am, 12noon, 5pm; Weekdays: T/Th: 5:50pm & Fri 12:05pm (except 1/29 & 1/30). All Masses in MIT Chapel. Morning Prayer: M-F: 8:15am, Chapel Basement. Bible Study: Tues, 8pm, Chaplaincy Library. Chaplaincy Office, x3-2981.

Lutheran Ministry and Episcopal Ministry** - Weekly service of Holy Communion: Wed, 5:10pm, MIT Chapel. Supper following at 312 Memorial Drive. For further info, call x3-2325-2983.

Baptist Chapel* - Baptist Student Fellowship Services, Suns, 7pm, MIT Chapel.

Islamic Society* - Daily prayers, Ashdown House (basement), 5 times a day. Call x5-9749 dorm, for schedule. Friday prayer, Ashdown House 12:30-1pm, Khutba starts at 12:30pm, congregation at 12:55pm.

United Christian Fellowship** - MIT Chapter of Inter-University Christian Fellowship, weekly meetings: large group for worship and sharing from God's word, Fri, 7pm, Student Ctr Rm 491; small group meetings for Bible Study and support, weekly at different times. For more info, call Chiu-Oan, x5-6123 dorm.

MIT Graduate Christian Fellowship* - Come meet other Christian faculty, staff and grad students, Tech Sq Prayer Meeting, Tues, 1:30-2pm, Rm NE43-368; weekly lunch gatherings, Weds, 11:55-12:55, Student Ctr Twenty Chimneys. For information contact Burt Kaliski, x3-5866 or Roz Wright, x3-8926. A fellowship group also meets Weds, 7:30am, Rm E51-307.

MIT Seekers Christian Fellowship* - Park Street Church Seekers Teaching and Worship Time, Sundays, 9:15am, enjoy our biblical teaching, worship and sharing at Park Street Church, right in front of the Park Street T stop. MIT Seekers leave from McCormick at 8:30am. Come join us.

Campus Crusade for Christ** - Family time, 7:15pm, Fri, eves, Rm 37-252. Fellowship, scripture teaching, prayer, singing, refreshments & fun. Tues, prayer time, 7:30-9am, W20-441, Student Center. Call x5-9153 dorm.

Lincoln Laboratory Noon Bible Studies* - Tues & Thurs, Kiln Brook III, Rm 239. Annie Lescard, x2899 Linc.

Morning Bible Studies - Fri, 7:30-8:30am, L-217. Ed Bayliss, x3456 Linc.

Noon Bible Study* - Every Wed, Rm E17-109, bring lunch. Ralph Burgess, x3-2422. (Since 1965).

Edgar Cayce Study Group* - Tuesdays, 6:30-9pm, Edgar Cayce's Search for God material will be used as the basis for group discussion & meditation. For info: Douglas McCarroll, 497-0819 12-9pm or Scott Greenwald, x3-7423.

Graduate Studies

Unless otherwise indicated, contact Dean Jeanne Richard at the Graduate School Office, Rm 3-136, x3-4869 for further information.

Bell Laboratories Graduate Research Programs for Women. Provides financial support for outstanding women students pursuing full time doctoral studies in the following fields: chemistry, computer science, economics, electrical engineering, experimental human psychology, materials science, mathematics, operations research, physics, and statistics. The **Fellowship Program** provides full tuition and fees plus a stipend of \$925/month for the academic year (9 months) plus an allowance for books, fees and related travel expenses. The **Grant Program** provides an annual award of \$1,500 which the recipient may use during the academic year in any way that benefits her professional development. Fellowships and grants will be renewed on a yearly basis for the duration of the graduate program, provided the student maintains satisfactory progress toward the doctoral degree. Applications must be received by January 15, and all supporting material by January 31, 1986. Two fellowships and four grants are awarded annually in late March for graduate study beginning in September. Applications are usually submitted during the candidate's senior year in college.

The Josephine de Karman Fellowship Trust of Pasadena, Calif. Twelve fellowships of \$3,000 each for the regular academic year (fall and spring semesters, or the equivalent where the quarterly system prevails) paid through the office of the university in which the candidate will be enrolled for study in the US. Study must be carried out in the US and all funds must be expended only within this country. Students in any discipline who are entering their senior undergraduate year or graduate students entering their third year or after of graduate school in the fall of 1986 are eligible. Postdoctorate students are not eligible. Special consideration will be given to applicants in the humanities. Foreign students already enrolled in a university located in the US are eligible. Tenure is for one academic year and is not renewable. Travel expenses are not included. For information and application forms, write to: Fellowship Committee, ATTN Miss B.J. Brown, Secretary, Josephine de Karman Fellowship Trust, PO Box 446, La Verne, CA 91750 on or before January 15, 1986. Announcement of awards will be made during April 1986.

US Navy Office of Naval Research Graduate Fellowships. Approximately 45 three-year Fellowships available for 1986-87, awarded for study and research in the following nine disciplines: electrical engineering, computer science, naval architecture and ocean engineering, materials science, applied physics, aerospace/mechanical engineering, life sciences and mathematics. These renewable fellowships have a 12-month tenure and pay full tuition and fees plus a stipend of \$13,000. Applicants must be US citizens who will receive their baccalaureate degree in 1986. Deadline: January 31, 1986. For applications, write: American Society for Engineering Education, 11 Dupont Circle, Suite 200, Washington, DC 20036.

UROP

MIT and Wellesley undergraduates are invited to join with faculty members in pursuit of research projects of mutual fascination. Undergraduates are also urged to check the Undergraduate Research Opportunities Program's bulletin boards located in the main corridor of the Institute and in the UROP Office. Faculty supervisors wishing to have projects listed should send project descriptions to the UROP Office. Questions? Contact us, x3-5049, Rm 20B-141.

Protein Purification and Crystallization. UROPer needed to purify the F-Fe Ferredoxin from the bacterium *Azotobacter Vinelandii*. This interesting protein contains 7 iron atoms arranged in one 4Fe-4S cluster and one 3Fe-3S cluster, and is involved in electron transport. The object of this project is to crystallize the protein for x-ray structure determination, to see how the Fe atoms are arranged. Biology or chemistry majors with lab experience preferred. PAY or credit. Faculty supervisor: W.H. Orme-Johnson. Contact: Paul McLean, x3-1855, Rm 18-408.

Investigate Electron Transfer Reactions. UROPer needed to participate in a project to investigate electron transfer reactions inside the enzyme nitrogenase. This enzyme contains 32Fe atoms and 2 Mo and converts N₂ to ammonia (nitrogen fixation). We wish to determine the pathway of electrons through the enzyme to the active site using a rapid-freeze technique (millisecond time-scale), followed by mossbauer spectroscopy. Much of the project will involve anaerobic enzyme purification and large scale culture (100l) of the bacteria. Previous lab experience preferred. PAY or credit. NB: Other projects available using recombinant-DNA techniques to overproduce protein. Please inquire. Faculty supervisor: W.H. Orme-Johnson. Contact: Paul McLean, x3-1855, Rm 18-408.

Teaching Kids to Design and Build. Needed: students who like to tinker, fix, build gadgets, houses, machines and computer programs. For an experimental project in a Cambridge public school called the Laboratory for Making Things. Work with kids aged 8-14 who are building "real world" objects and also computer-made objects. Should be familiar with LOGO (or LISP) and enjoy gadgeteering. Freshmen invited. Contact: Jeanne Bamberger, x3-7374, Rm 20C-112.

Research Forum to guide activities

A Research Policy Forum to facilitate the administration of research at MIT has been established by Professor Kenneth A. Smith, associate provost and vice president for research.

All new research-related procedures will be reviewed by the forum "in order to avoid unnecessary disruptions," Professor Smith said. A number of faculty, administrators and research staff have advocated the creation of the forum, he said.

Professor Smith is chairman of the forum. Members are Senior Vice President William R. Dickson, James J. Culliton, vice president for financial operations; Professor Joel Moses, head of the Department of Electrical Engineering and Computer Science; Professor Maurice S. Fox, head of the Department of Biology; Professor Peter A. Wolff, director of the Francis Bitter National Magnet Laboratory; Professor Daniel Roos, director of the Center for Technology, Policy and Industrial Development, and Frank McGrory, assistant director of the Energy Laboratory.

The forum has a working group, which is chaired by Frank McGrory. Working Group members are Frederick J. Epling, associate director, Laboratory for Nuclear Science; Douglas W. Pfeiffer, administrative officer, Department of Earth, Atmospheric and Planetary Sciences; Helen M. Raine, administrative

officer, Department of Aeronautics and Astronautics; Donna R. Savicki, assistant dean of engineering for administration; Carol E. Van Aken, associate director, Office of Sponsored Programs; Joan F. Rice, director of personnel; Philip J. Keohan, comptroller; Barry M. Rowe, director of purchasing and stores; Paul F. Barrett, director of physical plant, and Daniel H. Gould, assistant to the provost for administration.

Professor Smith said the Research Policy Forum will fill several roles.

"The Working Group will deal largely with the difficult operational issues which require coordination among the departments, labs and central administration. In my experience, it is these issues which cause the greatest consternation. Operational issues, however, usually lead to policy considerations and for these the Working Group will wish to interact with the Forum. Conversely, those policy issues which come directly to the attention of the Forum will necessarily have operational implications; and the Forum will require the guidance of the Working Group in these matters," he said.

Professor Smith urged members of the research community to feel free to communicate with the Research Policy Forum and/or the Working Group on issues of research administration.

New polymer program to begin

A new interdepartmental graduate program in polymer science and technology has been established at MIT to serve as a focus for the polymer-related activities that have existed here for many years.

The Program in Polymer Science and Technology (PPST) involves faculty from several departments, principally the Department of Chemistry, the Department of Mechanical Engineering, the Department of Materials Science and Engineering and the Department of Chemical Engineering.

An initial class of 10 students will begin studying next fall in the unified polymer curriculum which was developed using seed funds from the School of Engineering and the School of Science. The curriculum covers topics ranging from the molecular level to the continuum view of polymers. Embellished with advanced-topic electives, this core curriculum will serve as the intellectual pathway for doctoral students who, from the start of

their graduate studies, intend to specialize in the interdisciplinary field of polymers rather than follow a traditional departmental route to the doctoral degree. PPST faculty will administer the doctoral qualifying exams to these students and generally oversee their graduate education. A steady-state enrollment of 40 is anticipated.

Professor Robert E. Cohen of the Department of Chemical Engineering is serving as the first director of the PPST. The heads of four academic departments involved in the program form the steering committee.

The program also is raising funds for fellowship support for first-year students—who will be supported by research funds in later years—for laboratory operating costs, faculty time devoted to curriculum development, the MIT-wide Polymer Seminar Series and for a proposed resident-scholar program.

The PPST office is in Rm E19-336, x3-3115.

Jackson to speak at King Day

(continued from page 1)

at the NATO Advanced Study Institute on Polarons and Excitons in Polar Semiconductors and Ionic Crystals.

She was awarded the Karl Taylor Compton Award from MIT as an undergraduate, Tutoring Award of the the Association of MIT Alumnae, National Technical Association's Scientist of the Year Award, and Candace Award from the National Coalition of 100 Black Women. She is listed in American Men and Women of Science, Who's Who Among Black Americans, Who's Who In the East, and Outstanding Young Women of America. She was also included in the CIBA-GEIGY Exceptional Black Scientists Poster Series.

Before Wednesday's program, MIT President Paul E. Gray will lead a "march in silence" to the auditorium at noon from the Building 7 Lobby. Dr. Clarence G. Williams, special assistant to the president and coordinator of

Hildebidle honored

John Hildebidle, assistant professor of literature, has been named the first winner of the MSS/John Gardner Short Fiction Award.

The award, consisting of a cash prize and publication of the winner's collection of short stories, was established in memory of the late critic and novelist John Gardner. It is based at the State University of New York at Binghamton. Professor Hildebidle's book, *Stubbornness: A Field Guide*, is scheduled to appear next fall.

He is also the author of a volume of poetry, *The Old Chore* (Alice James Books, 1981), and of a critical study, *Thoreau: A Naturalist's Liberty* (Harvard University Press, 1983). Professor Hildebidle's poems have appeared in Poetry, Ploughshares and Kenyon Review, among others, and he has short stories scheduled to appear in Yankee and Partisan Review.

the event, announced. All members of the community are invited to participate.

A reception will follow in the Mezzanine Lounge in the Student Center. Later, Dr. Jackson will conduct a workshop entitled "Developing and Maintaining Positive Ethnic Identity" at 4pm in the Sala de Puerto Rico.

Further information may be obtained through Dr. Williams or Josephine M. Bartie, Rm 7-203, x3-5446.

Dr. King was assassinated April 4, 1968, at the age of 39 in Memphis, Tenn. January 20, 1986 marks the first national holiday celebrating Dr. King's life and contribution to world peace.

Mubiru-Musoke named

Margaret Mubiru-Musoke has been appointed assistant director of the Undergraduate Research Opportunities Program (UROP) where she will be responsible for financial administration and the computer system. In addition, she will coordinate off-campus UROP arrangements, interacting with students and faculty in the management of the program.

Ms. Mubiru-Musoke is returning to MIT after a year and a half as an information specialist at the Fletcher School of Law and Diplomacy at Tufts University. Before that, she held a similar position at the International Food and Nutrition Program based in what is now the Department of Applied Biological Sciences at MIT.

Educated in both Uganda and the United States, Ms. Mubiru-Musoke holds masters degrees from the Fletcher School and from Simmons College Graduate School of Information and Library Science. Before coming to the US, she was a loan officer for three years for the Uganda Commercial Bank.

Two exhibitions open

Two major exhibitions open this week, at the MIT Museum and in The Reference Gallery of the List Visual Arts Center on the main entry floor of the Wiesner Building (E15). The Museum exhibit, opening Thursday, Jan. 9, is *Minor White: Photographs, 102 prints* dating from the 1930's to 1968. At the Reference Gallery, Marina Abramovic and Ulay: *The Great Wall of China Project* opened Monday. It involves two European artists who used unusual means to document a silent walk from opposite ends of the Great Wall. Both exhibitions will be reported at greater length in a subsequent issue of Tech Talk.



Alexandra Dann, Wellesley '87; Andrea McGimsey '87, graduate student Brian Rague and Stephen Genn '86 in a scene from the MIT Shakespeare Ensemble's production of *Much Ado About Nothing*, being presented today and tomorrow (Jan. 8-9) at 8 pm in Kresge Little Theatre. Admission: \$6; \$4 students. Information: 253-2903. Members of the Ensemble leave this weekend for their annual January tour which will include performances at Princeton University and at Mamaroneck, N.Y.

23 projects win Athena funds

Project Athena has announced that the following 23 projects have been funded:

Professors Thomas Knight and Donald Troxel, Department of Electrical Engineering and Computer Science, Digital Design Tools.

Professor Richard de Neufville, Department of Civil Engineering, 1.101 Decision Analysis Laboratory.

Paul Bristowe, Professors Bernhardt Wuensch, and Robert Balluffi, Department of Materials Science and Engineering, Computer-Aided Teaching of Crystal Structure, Crystallography, and Crystal Defects.

Professor Keith Johnson, Department of Materials Science and Engineering, Microcomputer Applications of Quantum Mechanics to the Electronic Structures of Atoms, Molecules, and Solids.

Professor Joseph Smith, Jr., and Gilberto Russo, Department of Mechanical Engineering, CAT: A New Methodology of Computer Aided Thermodynamics.

Michael Rosen, Department of Mechanical Engineering, Development and Evaluation of a Design Student's Spreadsheet.

Professor Leonard Gould, Department of Electrical Engineering and Computer Science, Revision and Port of the 6.301 Control Package.

Professor Sue McNeil, Department of Civil Engineering, Implementation of Problem Sets and Case Studies on Statistical Applications to Civil Engineering.

Professor Andrei Schor, Department of Nuclear Engineering, and Scott Free, Development of the Dynamic Simulator for Nuclear Plants (DSNP) as an Educational Tool of Nuclear Engineering.

Professor Robert Hulsizer, Jr., Department of Physics, Software Development for Undergraduate Seminar Subject 8S62 Using Computers in Elementary Physics.

Professors Richard Yamamoto and Martin

Deutsch, Department of Physics, Software Development Subject 8.13 Computer Use in the Junior Year Physics Laboratory.

Edwin Taylor, Department of Physics, Classroom Use of Computer Displays for Special Relativity 8.20.

Professor John Negele, Department of Physics, Proposal to Develop Software for 8.22 Computational Physics.

Edwin Taylor, Department of Physics, Graphical Utility Programs in the Teaching of Special Relativity.

Professor Aaron Fleisher, Department of Urban Studies and Planning, A Proposal to Develop Additional Materials for a Course in Progress "6001 for Applications."

Professor Lincoln Bloomfield, Department of Political Science, CASCON Computerized System for Information on Local Conflicts.

Professors Daniel McFadden and Henry Farber, Department of Economics, An Integrated Athena-Based Core for Statistical and Econometric Exercises in Course XIV.

Professor Walle Nauta and Steven Wertheim, Department of Psychology, Project 9 d002: A Computer-Aided Instruction System in Neuroanatomy.

Janet Murray, Department of Humanities Writing Program, Writing Project.

Professor Roy Welsch and Stephen Peters, Sloan School of Management, A Coherent Statistical System for Project Athena.

Professor Judah Schwartz, School of Engineering, Two-dimensional Kinematic and Analysis Using Microcomputer-controlled Interactive Videodisc.

Professor Emilio Bizzi, Whitaker College of Health Sciences, Technology, and Management, A Computer Laboratory for Computational Neuroscience.

Professor Judah Schwartz, Concourse, Software Tools for Freshman Physics and Mathematics.

Alzheimer/Down linkage studied

(continued from page 1)

will compare a series of Down's syndrome brains from fetal stages through adulthood with normal brains. The Down's brain specimens they collect come from victims who have died from other diseases, including heart defects.

"We will then compare these findings with the end-stage Alzheimer's brain," he said.

"We will detect the degenerative neurons of the brain with Nissl stains and will characterize these neurons with monoclonal antibodies to choline acetyl transferase, an enzyme that makes the molecule that transmits signals from one neuron to another. Comparison of the two stains will tell us whether or not a neuron has lost its function, and has not yet disappeared. Also at the youngest stages, whether a neuron has begun to function."

He added, "Other monoclonal antibodies, some of our own making, will be used to test maturational and functional characteristics of neurons. The use of monoclonal antibodies for this sort of study is just coming in to use now."

Innovative computer approaches will be used to view brain tissues in three dimensions. Usually after slicing the brain into thin sections and staining for specific neurons, only a two-dimensional view is obtained, Dr. Ingram said. But with recent development of needed hardware and software, the arrangement of healthy and decayed neurons can be assessed three dimensionally. (Dr. Ingram is

also looking for financial support to purchase computerized equipment.)

"One new system will digitize automatically the two-dimensional distribution of the neurons in successive sections. It will then convert the information into a three-dimensional graphic display of the whole nucleus. It will also rotate that object, allowing us to investigate the complex structure, deciding which portion of the brain is still functional and which has begun to degenerate—a valuable clue to the origin of the disease," he said.

The program will also perform necessary statistical evaluation of the structure.

Many senior citizens over 65 who have some dementia have Alzheimer's disease. Dr. Ingram said victims do not die of Alzheimer's, but of those diseases occurring when bedridden.

If Alzheimer's begins in the 50s or 60s, it progresses rapidly. If early onset appears, the condition could be genetic.

But, if it comes in the late 70s or 80s, it will progress gradually, sometimes for up to ten years.

Two other diseases similar to Alzheimer's are Creutzfeldt-Jakob, a rare brain disorder that causes dementia, and scrapie, a fatal brain disease found in animals. As in Alzheimer's, researchers believe these diseases may be caused by a small, slow-acting virus.

But research on the disease is still relatively new. Alzheimer's was not recognized as a frequently occurring major illness until the late 1970s.

TECH TALK



January 8, 1986
Volume 30 Number 17

Tech Talk is published 35 times a year by the News Office, Massachusetts Institute of Technology. Assistant Directors: China Altman, Charles H. Ball, Robert C. Di Iorio, Joanne Miller, Tech Talk editor, and Calvin D. Campbell, photojournalist, Editorial Assistant: Sharon Davis; Reporter: Lynn Heinemann (Institute Calendar, Classified Ads, Institute Notices).

Address news and editorial comment to MIT News Office, Room 5-111, MIT, Cambridge, MA 02139. Telephone (617) 253-2701.

Mail subscriptions are \$18 per year by first class mail. Checks should be made payable to MIT and mailed to Business Manager, Room 5-113, MIT, Cambridge, MA 02139.

The IAP Time Table

Introduction

Use the Timetable as a companion to the Guide.

When you locate an activity you are interested in attending, refer to the Guide to Activities for details about it. To find the complete listing, simply match the number that precedes the title of the activity in the Timetable with the number of the listing in the Guide. Activities appear in the Guide in numerical order.

New Listings and changes appear at the end of the Timetable.

A schedule with an asterisk (*) by it signifies an activity in which regular attendance is expected.

Preregistration dates of activities have been left in as a reminder to people who have signed up for them. These activities may be closed. They are listed under the dates that they are being held, not under the preregistration dates. If you are interested in attending an activity whose preregistration date has passed, we suggest you call the contact person listed in the Guide to see if there is any room.

Activities which in the Guide stated "date, time, and location to be arranged," and which were not scheduled by the Timetable deadline, do not appear here. If you find an activity in the Guide with no schedule, contact the organizer directly for details.

The Timetable for Jan 6-8 activities appears in this week's Tech Talk, for Jan 9-15 activities in the Jan 8 Tech Talk, for Jan 16-22 in the Jan 15 Tech Talk, and for Jan 23-29 in the Jan 22 Tech Talk.

Last-minute cancellations and schedule changes should be submitted to the IAP Office, 7-108, x3-1668, so that the office can post the information and handle inquiries.

Thursday, January 9

224 Decision Analysis
8:30-10 am, 37-212

352 Rapid Solidification Research At MIT: Opportunities And Roadblocks
9 am-4 pm, 13-3101

685 Expository Writing: An Intensive Review
9 am-12 noon.* Preregister by Dec 12.

686 Workshop On Engineering Writing: A Review Session For Graduate Students
Mechanical Engineering: Required
9 am-12 noon, 5-233

689 The Writing And Communication Center's Consultations
9 am-1 pm, 14N-317

4175 Plasma Fusion Center Open House
Alcator C Tour
9 am, meet at NW14-2209

4175 Plasma Fusion Center Open House
Tara Tandem Mirror Constance B Tour
9 am, meet at NW17-218

4568 Creative Problem Solving
9 am-5 pm, E51-332.* Preregister by Jan 2.

850 Statistics For Real Estate Analysis
9:30 am-12:30 pm, W31-300. Preregister by Dec 10.

4175 Plasma Fusion Center Open House
Versator Tokamak Tour
9:30 am, meet at 36-213

4175 Plasma Fusion Center Open House
Overview Of Fusion Technology Research
9:30 am, NW16, first floor lobby

4175 Plasma Fusion Center Open House
High Frequency Gyrotrons
9:30 am, NW16-249

(New) In Search Of Excellence
10 am-12 noon, E51-311

65 Learning From Building Failures
10 am-12 noon, 5-216. Preregister by Dec 12.

864 How Am I Going To Make This?
10 am-12 noon, 37-664. Preregister by Dec 30.

3005 Computer-Assisted Retrieval
10-11 am, 14-0551

4175 Plasma Fusion Center Open House
Plasma Theory Poster Display
10 am, NW16-249

4175 Plasma Fusion Center Open House
Plasma Theory
10 am, 38-268

4175 Plasma Fusion Center Open House
Fusion Reactor Design
10 am, NW16, first floor lobby

4175 Plasma Fusion Center Open House
Tandem Mirror Reactor Design
10 am, NW16, first floor lobby

4175 Plasma Fusion Center Open House
E-Beam/FEL Tour
10 am, meet at 36-261

4660 Beginning Hebrew
10 am-12 noon, W2A.* Preregister by Dec 20.

(New) Teaching Experiences In China: What MIT Can Learn
10:30 am-12 noon, 4-231

4175 Plasma Fusion Center Open House
Alcator C Tour
10:30 meet at NW14-2209

4175 Plasma Fusion Center Open House
Tara Tandem Mirror Constance B Tour
10:30 am, meet at NW17-218

182 How To Present A Short Technical Paper At A Professional Meeting
11 am-12 noon, 54-100

220 Loch Ness Update
11 am-12 noon, 4-402 (first meeting)

3006 History Of Navigation
11 am, 5-231*

3111 How To Start A Walking Program
11 am-12:30 pm, 4-163

4175 Plasma Fusion Center Open House
Versator Tokamak Tour
11 am, meet at 36-213

4175 Plasma Fusion Center Open House
Overview Of Fusion Technology Research
11 am, NW16, first floor lobby

4175 Plasma Fusion Center Open House
High Frequency Gyrotrons
11 am, NW16-249

4175 Plasma Fusion Center Open House
Plasma Theory
11:30 am, 38-268

4175 Plasma Fusion Center Open House
Tandem Mirror Reactor Design
11:30 am, NW16, first floor lobby

4175 Plasma Fusion Center Open House
Fusion Reactor Design
11:30 am, NW16, first floor lobby

4175 Plasma Fusion Center Open House
Plasma Theory Poster Display
11:30 am, NW16-249

4175 Plasma Fusion Center Open House
E-Beam/FEL Tour
11:30 am, meet at 36-261

401 Biomechanics: How The Human Motor System Works And How To Fix It When It Doesn't
12 noon-1 pm, 3-133

3009 MIT Traditions
12:15 pm, N52-260

3112 Our Children: Out Of Sight But Not Out Of Mind
12:30-1:30 pm, 4-163

87 Techniques In Molecular Biology
DNA Sequencing By M13 Bacteriophage Cloning And Dideoxy Chain Terminations
1-3 pm, 16-310

572 Introduction To FORTRAN Programming
1-4 pm, 4-351*

686 Workshop On Engineering Writing: A Review Session For Graduate Students
Civil Engineering: Required
1-4 pm, 5-233

688 Mini-Sessions On How To Write A Paper
Writing Introductions And Conclusions
1-1:30 pm, 14E-304

1056 Designing Physics Experiments For Fun
1-3 pm, 24-612

1161 Computerizing Form Letters
1-3 pm, 1-390

3084 Rainbow Holography
1-5 pm, E15-401.* Preregister by Dec 12.

3602 Strategies For Success At MIT
1-3 pm, Mezzanine Lounge, Student Center

4815 Atheists Anonymous
1-2:30 pm, 349 Student Center

3113 Condoms: Don't Leave Home Without Them
1:30-2 pm, 4-163

3504 Computer Control Of Nuclear Reactor
1:30-4 pm, NW12-202

4175 Plasma Fusion Center Open House
Alcator C Tour
1:30 pm, meet at NW14-2209

4175 Plasma Fusion Center Open House
Tara Tandem Mirror Constance B Tour
1:30 pm, meet at NW17-218

6 Highlights Of Aeronautics And Astronautics
SpaceLab Mission D1: Experiments On Vestibular Adaption To Weightlessness And Space Motion Sickness
2-3 pm, 33-206

60 Expressive And Descriptive Watercolor: Techniques For Designers And Artists
2-5 pm, 7-404.* Preregister by Dec 12.

354 Making Metal From Rocks
2 pm, 13-5016 (organizational meeting)

851 Value Creation In Real Estate
2-5:30 pm, W31-300. Preregister by Dec 10.

3114 How Much Hearing Loss, What?
2-3 pm, 4-163

4175 Plasma Fusion Center Open House
Versator Tokamak Tour
2 pm, meet at 36-213

4175 Plasma Fusion Center Open House
Overview Of Fusion Technology Research
2 pm, NW16, first floor lobby

4175 Plasma Fusion Center Open House
High Frequency Gyrotrons
2 pm, NW16-249

4201 What Should A University Be? MIT in 1986 And Beyond
What Makes A Good Engineering Education?
2-4 pm, 4-145

4435 Art Classes And Facilities At The Student Art Association
Creative Silkscreen
2-4:30 pm, 425 Student Center

4703 Israeli Folk Dance For Beginners
2-3 pm, 407 Student Center

4175 Plasma Fusion Center Open House
Plasma Theory
2:30 pm, 38-268

4175 Plasma Fusion Center Open House
Tandem Mirror Reactor Design
2:30 pm, NW16, first floor lobby

4175 Plasma Fusion Center Open House
Plasma Theory Poster Display
2:30 pm, NW16-249

4175 Plasma Fusion Center Open House
Fusion Reactor Design
2:30 pm, NW16, first floor lobby

4175 Plasma Fusion Center Open House
E-Beam/FEL Tour
2:30 pm, meet at 36-261

3900 Open Meetings Of The Institute Colloquium Committee
3-4:30 pm, 10-280

4570 Investing (Profitably) In Real Estate
Real Estate Ventures
3-4 pm, 4-159

5051 Feminist Readings
3-4 pm, E52-341

776 Things You Can Do With A Technical Degree Besides Hands-On Technical Work
Marketing And Marketing Research
4 pm, 4-153

4103 Operations Research Center Faculty Lecture Series
4-5 pm, E40-298

4562 Bicycle Building And Maintenance
4-5:30 pm. Preregister by Jan 1.

(New) Speech Systems Laboratory Tour (Lincoln Laboratory)
1-5 pm, Lincoln Laboratory (B-335). Preregister by Jan 6.

52 Sweat: An Interactive Multi-Media Art Installation
5-7 pm, 7-431, new exhibition room

4755 Kundalini Yoga Meditation: A Neurocognitive Approach To Excellence
5-7 pm, 24-624.

5116 Weekly Wine Tasting Series
5:30-6:30 pm, Third Floor Lounge, Next House

4800 Christian Science Organization At MIT: Weekly Testimony Meetings
5:45-6:30 pm, 4-145

4435 Art Classes And Facilities At The Student Art Association
Etching
6-8 pm, 429 Student Center

222 Build Your Own Computer
7-8:30 pm, 34-101.* Preregister by Jan 7.

325 Women In Crime
Bloody Mama
7 pm, 66-110

2069 Computer Chess
7 pm, 24-034

2086 Cultural Awareness In Design And Planning Practice: An EAP Forum
7-9 pm, 10-400*

4435 Art Classes And Facilities At The Student Art Association
Oil Painting
7-10 pm, 425 Student Center

4435 Art Classes And Facilities At The Student Art Association
Introduction To Wheelthrowing
7-10 pm, 431 Student Center

4435 Art Classes And Facilities At The Student Art Association
Basic Darkroom Techniques
7-10 pm, Student Center

4613 World Peace Essay Contest
7-9 pm, Mezzanine Lounge, Student Center

4764 Beginning International Folkdancing
7-10 pm, Lobdell, Student Center

4765 The MIT Ballroom Dance Club Crash Course
Cha Cha
7-10 pm, dining hall, Burton

4810 How To Answer A Cultist And Other New Testament Topics
7-8 pm, 66-319

4814 The Baha'i Faith: A New View Of Religion
New Ideas About World Peace
7-9 pm, Mezzanine Lounge, Student Center

459 IAP Orchestra
7:30-11 pm, Kresge. Preregister by Dec 16.

4606 Ancient India
7:30 pm, 10-280*

4571 Do-It-Yourself Electronics
8-10 pm, 35-225*

4656 Introduction To New Testament Greek
8-9 pm, 66-319*

4702 Much Ado About Nothing
8 pm, Kresge Little Theatre

Friday, January 10

224 Decision Analysis
8:30-10 am, 37-212

475 Fusion Safety Seminar
9 am-12 noon, NW16-213, 2-4 pm, 34-101

530 The Great MIT Boat Race
9-10:30 am, 5-234*

686 Workshop On Engineering Writing: A Review Session For Graduate Students
Mechanical Engineering and Civil Engineering: Recommended
9 am-12 noon, 5-233

689 The Writing And Communication Center's Consultations
9 am-1 pm, 14N-317

865 Physics Of Space Plasmas
9 am-5 pm, Marlar Lounge, 37-252

4568 Creative Problem Solving
9 am-5 pm, E51-332.* Preregister by Jan 2.

850 Statistics For Real Estate Analysis
9:30 am-12:30 pm, W31-300. Preregister by Dec 10.

375 What Is Quantum Field Theory?
10-11 am, 26-204

1157 Survival Training On Multics
10 am-12 noon, 1-390

3115 Health Fair: Four Seasons
10 am-3 pm, E25-117

567 Introductory Hyper-Energy Theory
10:30 am-12 noon, 4-159*

180 Current Problems In The Earth Sciences
The Thermohaline Circulation Of The Ocean
11 am, 54-100

3116 The Teeth In Your Mouth
11 am-12 noon, 4-163

383 Knitting Clinic
12 noon-1 pm, 12-102

891 Some Thoughts About Computers, Kids, And School
12 noon-1:15 pm, 4-149

2063 Let's Try Some Stitches
12 noon, 26-569

3117 Depression: What Is It, Why Is It, Do You Have It, What To Do?
12 noon-1 pm, 4-163

4458 Assembly Language Programming For The IBM-PC
12 noon-2 pm, 8-205

4556 Vegetable Gardening
12 noon-1:30 pm, 10-280

4804 Torah And Chocolate
12 noon-1 pm, W2A.

72 Indoor Field Hockey
1-3 pm, second floor, New Athletic Center

87 Techniques In Molecular Biology
Techniques And Applications Of Monoclonal Antibodies
1-3 pm, 16-310

101 Mining Heat From The Earth: The Potential Of Dry Rock Geothermal Energy
1-3:30 pm, 66-110

688 Mini-Sessions On How To Write A Paper
Revising Your First Draft
1-1:30 pm, 14E-304

(New) Some Main Problems Of Philosophy
Is Beauty In The Eye Of The Beholder?
2 pm, 37-212

6 Highlights Of Aeronautics And Astronautics
Human-Powered Aircraft
2-3 pm, 33-206

57 Drawing Designed Form
2-5 pm, 7-431, new exhibition room. Preregister by Dec 12

63 New Design: Sketches And Pixels
2-4 pm, computer resource lab, 9-551.* Preregister by Dec 12 in 7-303.

179 Chaos, Unpredictability, And Strange Attractors
2 pm, 54-915

236 Cancer And The '90s: An Update
2-4 pm, 3-270

851 Value Creation In Real Estate
2-5:30 pm, W31-300. Preregister by Dec 10.

2059 Laboratory For Nuclear Science And Physics Department Lecture
2 pm, 4-145

4817 Daheshism: The Existence Of One God And The Unity Of Religions
2-5 pm, 1-190

285 Social Conflict: Ten Historians View Its Causes And Nature
A Historical Perspective On Today's Social Conflict: South Africa
3-4:30 pm, 2-190

2071 Learning From The Past
Reminiscences Of Bohr And Pauli
3:30 pm, location to be arranged

52 Sweat: An Interactive Multi-Media Art Installation
5-7 pm, 7-431, new exhibition room

4657 What Is Science Fiction?
5 pm, 473 Student Center

4824 Science, Religion, And Life
Scientific View Of Religion
5:15 pm, Chapel

351 In Vino Veritas
8-11 pm, 6-321. Preregister by Dec 16.

4752 Cross-Country Skiing
8 pm, Fri-8 pm, Sun, Plymouth, New Hampshire.* Preregister by any Thurs, 5:30 pm.

Saturday, January 11

4550 Automotive Engines
8 am-2 pm, building 31

5114 Inventory Of The MIT Science Fiction Society Library
11 am-4 pm, W20-473

4458 Assembly Language Programming For The IBM-PC
12 noon-2 pm, 8-205

(New) Chinese Classes
1-3:30 pm, 1-136

4653 Finnegans Wake, Thunderclaps And All
2-4 pm, location to be arranged.* Preregister by Jan 10.

Sunday, January 12

5114 Inventory Of The MIT Science Fiction Society Library
11 am-4 pm, W20-473

4458 Assembly Language Programming For The IBM-PC
12 noon-2 pm, 8-205

454 For Flutes Only
1-5 pm, 4-156 (three adjoining rooms). Preregister by Dec 9.

4614 Chinese Cooking Made Fun And Easy
3-7 pm, Next House Kitchen. Preregister by Jan 6.

4907 Contemporary Gay Issues
Male Images: Gay Imagery?
5 pm, Hayden Gallery, Weisner Building

(New) Intermediate Israeli Folk Dance
7-9 pm, 407 Student Center

Monday, January 13

100 Glassblowing
9 am-12 noon, 1-3 pm, 66-157*

632 Mysteries Of Production Scheduling
9-11 am, E51-310

686 Workshop On Engineering Writing: A Review Session For Graduate Students
Ocean Engineering
9 am-12 noon, 5-233

853 Advanced Spreadsheet Techniques For Real Estate Analysis
9 am-4 pm, W31-301. Preregister by Dec 10.

4276 Ask SGNET, The Marine Information Network
9 am-12 noon, E38-306

4568 Creative Problem Solving
9 am-5 pm, E51-332.* Preregister by Jan 2.

826 Seminar On Analytical Techniques By Electrons, X-Rays, And Ion Beam Instrumentation
9:30 am-3 pm, 13-3101

4803 Inspiration, Prophecy, And Law
9:30-11:30 am, W2A

14 Hybrid Finite Element Methods
10-11:30 am, 33-319. Preregister by Jan 8.

630 Sloan School Faculty Open House: Tom Allen
10 am-12 noon, E52-598

663 Community-Based TV Workshop
10 am-12 noon, 7-335A

689 The Writing And Communication Center's Consultations
10 am-2 pm, 14N-317

1076 Reminiscences Of The Early Experiments In NMR
10-11 am, NW14-2209

1165 Statistical Software On Micros
10 am-12 noon, 1-390

4206 Science On The Airways
10 am-12 noon, E51-125

4350 UROP: How To, When, Why?
10 am-12 noon, 66-110

4652 Yiddish
10 am-12 pm, W2A.* Preregister by Dec 20.

4660 Beginning Hebrew
10 am-12 noon, W2A.* Preregister by Dec 20.

136 Challenges Of A Small Chemical Company
10:30 am, 18-290

4811 Science Looks At The Bible, The Bible Looks At Science
10:30 am-12 noon, W2A

180 Current Problems In The Earth Sciences
Oceanography And Seismic Exploration From Drifting Ice Floes
11 am, 54-100

660 Computer-Aided Policy Making
11 am-12:30 pm, 1-134

1075 High-Resolution Solid State NMR
11 am-12 noon, NW14-2209

2025 Semiconductor Manufacturing
11 am-12 noon, 35-338

3118 Living With Lasagna
11 am-12:30 pm, E23-297. Preregistration required.

527 The Sea-Based Nuclear Deterrent And Arms Control
3-4:30 pm, 1-246

777 Visa Status And How It Affects Employment Of Foreign Nationals In The United States
12 noon, 9-150

4204 The Artist Behind The Desk
12 noon-2 pm, E51-218

4435 Art Classes And Facilities At The Student Art Association
Fingerpainting
12 noon-3 pm, 407 Student Center

4604 Is There A Peace Process In The Middle East?
Overview: The Middle East Following The Invasion Of Lebanon
12 noon-2 pm, 1-190

4809 What Does It Mean To Be Born Again?
12:15-12:45 pm, location to be arranged

3119 Safe Sex
12:30-1:30 pm, West Lounge, Student Center

81 Frontiers Of Neurobiology
Computational Motor Control
1-3 pm, 16-310

133 High Resolution Mutinuclear NMR
1-2:30 pm, 2-190.* Preregister by Jan 1.

380 Classical Thermodynamics For Calculus Students
1-2 pm, 4-370

563 Physics Flicks
The Distinction Of Past And Future
1 pm, 6-120

626 A Brief Introduction To Law
Overview Of The American Legal System
1-3 pm, E51-302

686 Workshop On Engineering Writing: A Review Session For Graduate Students
Nuclear Engineering, Technology and Policy
1-4 pm, 5-233

1056 Designing Physics Experiments For Fun
1-3 pm, 24-612

3084 Rainbow Holography
1-5 pm, E15-401.* Preregister by Dec 12.

4465 Independant Graphics Using GKS At Athena
1-2 pm, 35-225.* Preregister by Jan 6.

3120 Second Opinion Consultations
1:30-2:30 pm, West Lounge, Student Center

6 Highlights Of Aeronautics And Astronautics
Two Exciting Applications Of Composites: The Beech Starship And The Shuttle Solid Rocket Booster
2-3 pm, 33-206

60 Expressive And Descriptive Watercolor: Techniques For Designers And Artists
2-5 pm, 7-404.* Preregister by Dec 12.

204 Effective Scholarly Writing
2-5 pm, E51-317

574 Electron Scattering As A Probe Of Proton Structure
2-3:30 pm, 4-159

861 Space Science: What Greases Its Wheels?
2-4 pm, Marlar Lounge, 37-252

1077 NMR At Very Low Temperatures
2-3 pm, NW14-2209

4207 Technology And Science Journalism: Toward Definitions
2-4 pm, E51-125

(New) Try Your Hand At Reporting
Mon, Jan 13, 2:30-5:30 pm, WMBR News station (base-ment of Walker)

285 Social Conflict: Ten Historians View Its Causes And Nature
Social Conflict And The Failure Of Ancient Greek Democracy
3-4:30 pm, 2-190

527 The Sea-Based Nuclear Deterrent And Arms Control
3-4:30 pm, 1-246*

630 Sloan School Faculty Open House: Ed Roberts
3-4:30 pm, E52-535

4260 Open Hearing On An Integrated Curriculum At MIT
3-5 pm, 4-163

4561 Personal Financial Planning
3-5 pm, 5-134

4823 Truth And Revelation In Islam And Christianity
3 pm, 9-150

1078 Magnetic Resonance Imaging Of Humans
3:15-4:15 pm, NW14-2209

630 Sloan School Faculty Open House: Arnie Barnett
3:30-5 pm, E53-301

4712 Dance Workshop Guest Instructor Series
3:30-5 pm, T-Club Lounge

3 Private Pilot Ground School: Airplane And Glider
4-6 pm, 33-419*

4 Instrument Pilot Ground School
4-6 pm, 33-418*

137 Chemistry In Art
4 pm, 10-250

456 The Soul Of An Old Machine
4-6 pm, 4-160*

4102 New Advances In Operations Research Software
4-5 pm, E40-298

4750 Kundalini Yoga: The Science Of Awareness
5-6 pm, second floor, Burton

4754 Winter School
6-10 pm, 407 Student Center.* Preregister by Dec 31.

4852 Hinterlands: Backgrounds And The African Environment: Abandonment, Investment, And Denominations Of State Politics To Desert-Prone Areas.
6-7:30 pm, W2A

56 Phenomena: In Search Of Chinese Art Form
Chinese Folk Art: The Arts Of Present Daily Life University
7-9 pm, 3-133

3082 Outlook 2000
7 pm, 4-471

4701 Middle Eastern Dance
7-8 pm, dance studio, third floor, du Pont*

4705 Improvisational Comedy Workshop
7-10 pm, Mezzanine Lounge, Student Center. Preregister by Jan 3.

4765 The MIT Ballroom Dance Club Crash Course
Swing II
7-10 pm, Sala de Puerto Rico, Student Center

5103 Pagan Students' Group
7-9 pm, location to be arranged

4436 Quilting For The Beginner
7:30-9:30 pm, MacGregor seminar room 1.* Preregister by Dec 15.

4611 Media In Contemporary India
Theatre And Politics In Indian Streets
7:30 pm, 4-231

4759 Roller Skating
7:30 pm, du Pont gym

4763 Introduction To The Ancient Scottish Sport Of Curling
7:30 pm, The Country Club. Preregister by Jan 6.

351 In Vino Veritas
8-11 pm, 6-321. Preregister by Dec 16.

4753 Kayaking Classes
8-10 pm, Alumni Pool.* Preregister by Dec 5.

4900 What IS SDI All About?
8 pm, 8-205

Tuesday, January 14

853 Advanced Spreadsheet Techniques For Real Estate Analysis
9 am-4 pm, W31-301. Preregister by Dec 10.

4281 Oceanographic Field Trip
9-11 am, New England Aquarium Dock. Preregister by Jan 13.

4568 Creative Problem Solving
9 am-5 pm, E51-332.* Preregister by Jan 2.

826 Seminar On Analytical Techniques By Electrons, X-Rays, And Ion Beam Instrumentation
9:30 am-3 pm, 13-3101

8 Aerodynamic Design For High Lift
10-11 am, 33-422.* Preregister by Jan 13.

14 Hybrid Finite Element Methods
10-11:30 am, 33-319. Preregister by Jan 8.

40 Medical Applications Of Biotechnology
10-11 am, 66-154

566 Physics Live
Tour Of The Nuclear Reactor And Discussion Of Physics Experimentation
10 am-12 noon, reception desk, NW12

630 Sloan School Faculty Open House: Lester Thurow
10-11:30 am, E52-460

653 Bicycle Planning
10 am-12 noon, 10-400

663 Community-Based TV Workshop
10 am-12 noon, 7-335A*

689 The Writing And Communication Center's Consultations
10 am-2 pm, 14N-317

864 How Am I Going To Make This?
10 am-12 noon, 37-664. Preregister by Dec 30.

3005 Computer-Assisted Retrieval
10-11 am, 14-0551

4206 Science On The Airways
10 am-12 noon, E51-125

4457 Exploring Graphics In Scheme
10 am-5 pm, 9-550

4461 Athena Development Directions
Athena And The MIT Community
10-11:30 am, 34-101

630 Sloan School Faculty Open House: Tom Magnanti And Jim Orlin
11 am-12 noon, E53-301

660 Computer-Aided Policy Making
11 am-12:30 pm, 1-134
3006 History Of Navigation
11 am, 5-231*

3121 Back Program
11 am-12 pm, West Lounge, Student Center

3603 Graduate Resident Tutor Information Session
11 am-12 noon, 4-260*

401 Biomechanics: How The Human Motor System Besides And How To Fix It When It Doesn't
12 noon-1 pm, 3-133

892 Reading To Wild Things: Books And Stories For Pre-Schoolers
12 noon-1 pm, 4-144

1196 Feasting Twice
12 noon-2 pm, E51-017

2068 Niels Bohr Film Series
12 noon, location to be arranged

3122 Sexuality—Repression Into Expression: A Panel Discussion
12-1:30 pm, West Lounge, Student Center

4411 Open House: Working Group On Support Staff Issues
12 noon-1 pm, Bush Room

4435 Art Classes And Facilities At The Student Art Association
History And Science Of Color
12 noon-1:30 pm, 407 Student Center

4604 Is There A Peace Process In The Middle East?
Israel: Zionism And Democracy Religious Right In Israel; The Right In Israel And Its Connection To US Jewry
12 noon-2 pm, 1-190

4655 Journal Writing Workshop
12 noon, 20C-116. Preregister by Jan 13.

4751 England Encore: Thames Kayaking And York And The Dales
12 noon-1:30 pm, 1-136

5109 Snakes As Pets
12 noon-1 pm, 4-270

81 Frontiers Of Neurobiology
What Features Of The Brain Function Do We Hope To Understand Through Molecular Biology?
1-3 pm, 16-310

133 High Resolution Multinuclear NMR
1-2:30 pm, 2-190.* Preregister by Jan 1.

219 How To Find And Do A Course VI Undergraduate Thesis
1 pm, 34-101

380 Classical Thermodynamics For Calculus Students
1-2 pm, 4-370

585 The Rise of Nazism In Germany, 1929-1933: Six Theories In Search Of A Database
1-3 pm, 1-132

626 A Brief Introduction To Law
The Law Of Torts
1-3 pm, E51-302

727 Management Of High-Technology Entrepreneurship
1-4 pm, 34-101*

1053 Cross-Country Skiing
1-2:30 pm, 24-612, Preregister by Jan 14.

1151 Introduction To The Macintosh
1-3 pm, 3-343

3078 Talking Computers
1-3:30 pm, Media Lab, third floor. Preregister by Jan 13.

4437 Quilter's Exchange
1-2 pm, 66-148. Preregister by Dec 30.

4440 Valentine-Making Spree
1-4 pm, Student Center

4912 Current Issues Forum
1-3 pm, 37-212

3123 Looking Ahead: Fat And Forty?
1:30-2:30 pm, West Lounge, Student Center

(New) Recursive Parameter Estimation
2 pm, location to be arranged

6 Highlights Of Aeronautics And Astronautics
Wind Effects on Buildings: Broken Glass, Swaying Buildings, And Wind Blown Pedestrians
2-3:30 pm, 33-206

63 New Design: Sketches And Pixels
2-4 pm, computer resource lab, 9-551.* Preregister by Dec 12.

180 Current Problems In The Earth Sciences
Comet Halley Update
2-3:30 pm, 54-915

574 Electron Scattering As A Probe Of Proton Structure
2-3:30 pm, 4-159

583 Baseball By The Numbers
2-5 pm, 66-110

601 Paradoxes, Illusions, And Ambiguities From Cognitive Science
2-5 pm, 10-250

1054 Beguiling And Bewildering Physics
4-5 pm, 24-612

1156 Survival Training On Emacs
2-4 pm, 1-390

3002 The MIT Libraries' Online Information System: An Introduction
2-4 pm, 14S-334

4201 What Should A University Be? MIT In 1986 And Beyond
Getting An Education At MIT Is Like Drinking From A Firehose: Fact Or Fiction?
2-4 pm, 4-145

4207 Technology And Science Journalism: Toward Definitions
2-4 pm, E51-125

4703 Israeli Folk Dance For Beginners
2-3 pm, 407 Student Center

5102 Quasiquicentennial Celebration
2-3:30 pm, 14S-334

207 America In The World Economy
2:30-4 pm, E51-329

3124 Preventive Medicine And Health Screening
2:30-3 pm, West Lounge, Student Center

656 Planning, Organizing, And Questions Of Power
3-5 pm, 1-134

4812 Science And Religion: Issues
3-4 pm, W2A

630 Sloan School Faculty Open House: J.D. Nyhart
3:30-5 pm, E52-542

4816 Science And Technology As Christian Vocations
3:30-6:30 pm, Center Lounge, Student Center

456 The Soul Of An Old Machine
4-6 pm, 4-160*

776 Things You Can Do With A Technical Degree Besides Hands-On Technical Work
Investment Banking
4 pm, 4-153

1054 Beguiling And Bewildering Physics
4-5 pm, 24-612

4100 Operations Research In The Real World
4-5 pm, E40-298

4562 Bicycle Building And Maintenance
4-5:30 pm. Preregister by Jan 1.

4658 Writing For Technology Review
4-5 pm, 10-105

4854 Electrical Noise: Sources, Transmission, Consequences, Elimination
4 pm, 3-133*

4750 Kundalini Yoga: The Science Of Awareness
5-6 pm, second floor, Burton

4710 Dancing In Red Sneakers
6-7:15 pm, 1-125

5 Space Station Activities Series
The Soviet Experience Laboratory
7 pm, 37-212

222 Build Your Own Computer
7-8:30 pm, 34-101.* Preregister by Jan 7.

Women In Crime
Marnie
7 pm, 66-110

4462 Using ReGIS Graphics On The VT240 Terminal
7-8 pm, 35-225

4610 Apples And Oranges: Workshop On Male And Female Dynamics
7 pm, 4-163

4651 Dramatic Reading Of A German Comedy
7-9 pm, 14N-313

4810 How To Answer A Cultist And Other New Testament Topics
7-8 pm, 66-319

4814 The Baha'i Faith: A New View Of Religion
Christianity And The Baha'i Faith
7-9 pm, West Lounge, Student Center

4911 Marriage And Parenting From A Biblical Perspective
7-9 pm, 3-133*

260 The Fabulous First Annual MIT Circus Project
7:30-9:30 pm, du Pont

73 Clogging And Flatfooting
8-10 pm, T-Club Lounge, du Pont

251 French Grand Opera
8 pm, Sala de Puerto Rico

4571 Do-It-Yourself Electronics
8-10 pm, 35-225*

4656 Introduction To New Testament Greek
8-9 pm, 66-319*

4805 Talmud
8 pm, location to be arranged

4910 MIT Students For Individual Freedom
9 pm, 13-2010

Wednesday, January 15

102 Introduction To The Chemical Engineering Practice School And Seminar In Technical Communication
9 am-5 pm, 66-360*

632 Mysteries Of Production Scheduling
9-11 am, E51-310

686 Workshop On Engineering Writing: A Review Session For Graduate Students
Mechanical Engineering: Required
9 am-12 noon, 5-233

4850 Computer-Based Laboratory Measurements
9 am-3 pm, 3-050. Preregister by Dec 13.

4803 Inspiration, Prophecy, And Law
9:30-11:30 am, W2A

14 Hybrid Finite Element Methods
10-11:30 am, 33-319. Preregister by Jan 8.

127 Chemical Crystallography
10 am-12 noon, Norris Room, 18-290

575 Electromigration Failure In Integrated Circuits
10 am-12 noon, 8-205

653 Bicycle Planning
10 am-12 noon, 10-400

663 Community-Based TV Workshop
10 am-12 noon, 7-335A*

689 The Writing And Communication Center's Consultations
10 am-2 pm, 14N-317

3075 Color: A Logical Visual Display
10 am-12 noon, E15-344. Preregister by Jan 14.

3502 Nuclear Research Reactor Tour
10 am-12 noon, NW12-202. Preregister by day before.

4203 Images Of Science: A Video Exploration
10 am-12 noon, E51-215

4457 Exploring Graphics In Scheme
10 am-5 pm, 9-550

4461 Athena Development Directions
Networks And Communications
10-11:30 am, 34-101

4652 Yiddish
10 am-12 pm, W2A.* Preregister by Dec 20.

4711 Appalachian Dulcimer Playing
10 am-2 pm, 24-612

4811 Science Looks At The Bible, The Bible Looks At Science
10:30 am-12 noon, W2A

107 Clean Combustion Of Coal
11 am-12 noon, 66-110

180 Current Problems In The Earth Sciences
Climate And Volcanoes
11 am, 54-100

230 Computer Audio For Music Production
11 am-12:30 pm, Marlar Lounge, 37-252

355 Problems In Materials Economics
11 am-1 pm, 13-5002*

528 Ship Design Competition
11 am-12 noon, 5-314*

630 Sloan School Faculty Open House: Arnoldo Hax
11 am-12 noon, E52-551

660 Computer-Aided Policy Making
11 am-12:30 pm, 1-134

2025 Semiconductor Manufacturing
11 am-12 noon, 35-338

3125 Sexual Abuse: A Case Study Approach
11-11:45 am, West Lounge, Student Center

4279 Film, The Mary Rose
11 am-12 noon. Preregister by Jan 14.

new Why Weight? A Look At Eating Disorder Epidemic
12 noon-1:30 pm, Center Lounge, Student Center

2 Considerations Of Human Evolution In Mathematics Pedagogy: A Demonstration
12 noon-2 pm, 37-186

253 Introducing German Television Geisler
12 noon-2 pm, 14N-225

3126 How To Make A Hospital Experience Work For You: Planning Ahead
12 pm-12:45, West Lounge, Student Center

4604 Is There A Peace Process In The Middle East? The Palestinian National Movement Today
12 noon-2 pm, 1-190

4757 Yoga
12 noon-1 pm, 10-340

4819 Adam, Eve, Izanagi, And Izanami: Creation Accounts Of The Mid East and Far East
12 noon-1 pm, 441 Student Center

4821 Videotape Sessions On Islamic Teachings
12:30 pm, 3-133

89 The Welding Of Business And Science
1-3 pm, 16-310

153 High Resolution Mutinuclear NMR
1-2:30 pm, 2-190.* Preregister by Jan 1.

228 Introduction To Structural Analysis And Design Techniques (SADT)
1-3 pm, 4-270

380 Classical Thermodynamics For Calculus Students
1-2 pm, 4-370

624 A Brief Introduction To Law Constitutional Law
1-3 pm, E51-302

686 Workshop On Engineering Writing: A Review Session For Graduate Students
Civil Engineering: Required
1-4 pm, 5-233

727 Management Of High-Technology Entrepreneurship
1-4 pm, 34-101*

800 An American Physicist In Japan In 1945 And 1960: A Talk By Philip Morrison
1 pm, 6-120

1155 TELL-A-GRAF
1-3:30 pm, 1-390

3008 Latin American Experiences
1 pm, Baker Engineering Library Conference Room

3081 Tour Of The Media Laboratory
1-4 pm, Media Laboratory, third floor

3127 Raising Your Child Single-handedly: The Realities
1:2-15 pm, West Lounge, Student Center

4326 Lies, Damn Lies, And Statistics
1-2 pm, E40-153

4435 Art Classes And Facilities At The Student Art Association
Papermaking
1-5 pm, 425 Student Center

4806 Jewish Lab
1-2 pm, W2A

201 Effective Seminar Presentation
1:30-3 pm, E51-317

4153 Energy Conservation On The MIT Campus
1:30-3:30 pm, 4-153

(New) Some Main Problems of Philosophy
Do We Have Free-Will?
2 pm, 37-212

6 Highlights Of Aeronautics And Astronautics
Flutter Vibrations In Aircraft And Other Structures
2-3 pm, 33-206

7 Draper Laboratory Tour
2-4 pm, Draper Lab. Preregister by Jan 7.

104 Polymer Surface Modification In Cold Plasmas: A Modern Alchemy?
2-3:30 pm, 66-110

178 The Geochemistry Of Beer: It's The Water
2-5 pm, 54-915

561 The Inflationary Universe
2-3:30 pm, 6-120

2072 Bayreuth By The Charles: Wagner's Ring Cycle
3 pm, location to be arranged. Preregister by Dec 15.

4708 Magic For Beginners
2-3 pm, W2A

3128 Our Future Selves
2:15-3 pm, West Lounge, Student Center

10 Seminar Series On The History Of Aeronautics
3-5 pm, 33-319

75 Trick Roping With A Lasso (Or Lariat)
3-4 pm, T-Club Lounge. Preregister by Dec 20.

285 Social Conflict: Ten Historians View Its Causes And Nature
Types Of Social Conflict In Imperial China
3-4:30 pm, 2-190

527 The Sea-Based Nuclear Deterrent And Arms Control
3-4:30 pm, 1-246*

630 Sloan School Faculty Open House: Henry Jacoby
3-4 pm, E52-444

633 Whether, Why, And How To Buy A Personal Computer
3-5 pm, E51-332

4200 Return Of A Native: Poetry Reading From Nightwatches: Inventions On The Life Of Maria Mitchell
3-4:30 pm, E51-218

4560 Crochet A Kippah (Yarmulke)
3-5 pm, Hillel. Preregister by Jan 13.

4561 Personal Financial Planning
3-5 pm, 5-134

4913 Sarvodaya Shramadana: Rural Development In Sri Lanka
3-4:30 pm, Center Lounge, Student Center

4709 Magic: Intermediate-Advanced
3:15-4:30 pm, W2A.

3 Private Pilot Ground School: Airplane And Glider
4-6 pm, 33-419*

4 Instrument Pilot Ground School
4-6 pm, 33-418*

456 The Soul Of An Old Machine
4-6 pm, 4-160*

630 Sloan School Faculty Open House: Tom Malone
4-5 pm, E53-307

4101 Student Workshops In Operations Research
4-5 pm, E40-298

4425 The New Scholarship On Women: The Impact On Five Disciplines
Literature
4-5 pm, Humanities Library

4750 Kundalini Yoga: The Science Of Awareness
5-6 pm, second floor, Burton

4754 Winter School
6-10 pm, 407 Student Center.* Preregister by Dec 31.

56 Phenomena: In Search Of Chinese Art Form
Everyday Places: Culture And Experience In Chinese Architecture Boston
7-9 pm, 3-133

458 Films About Music
Musicals
7 pm, 66-110

726 Getting The Job You Want In Industry: A Women's Guerrilla Guide To The Pin-Striped World
7-9:30 pm, 10-105*

3001 The Chemical Information Maze: How To Beat It
Current Awareness
7-8 pm, Science Library, Map Room

4758 Environmentally Induced Diseases
7-10 pm, 1-190

4436 Quilting For The Beginner
7:30-9:30 pm, MacGregor seminar room 1.* Preregister by Dec 15.

4611 Media In Contemporary India
Status Of Indian Press
7:30 pm, 4-231

4759 Roller Skating
7:30 pm, du Pont gym

226 Crypt Breakers Workbench: Final Report
8 pm, NE43-512A

351 In Vino Veritas
8-11 pm, 6-321. Preregister by Dec 16.

753 Algorithmic Probability And Universal Problem Solvers
8 pm, floor 7, NE-43

4571 Do-It-Yourself Electronics
8-10 pm, 35-225*

New Listings

Nude, Naked, Stripped: Art Exhibition And Programs
Dana Friis-Hansen
Through Feb 4, Hayden Gallery, List Visual Arts Center, E15

In conjunction with this exhibition the Committee in the Visual Arts is sponsoring a variety of programs during IAP. The exhibition explores the varying attitudes toward the body without clothes. Sponsor: Committee on the Visual Arts. Contact: Dana Friis-Hansen, E15-109, x3-4400.

Tattooing
Nancy Hollomon
Mon, Thurs, Jan 6, 9, 13, 12:30-3 pm, Emma Rodgers Room

Students learn to make lace-like ornaments for clothes or other uses. Bring own small shuttle and thread or buy it from teacher. Supplies about \$5. Come once or all three times. Stay at least one hour. Sponsor: Women's League. Contact: Nancy Hollomon, 121 Carlton St., Brookline MA, 02146.

Some Main Problems Of Philosophy
Prof. Jim Higginbotham
Is Beauty In The Eye Of The Beholder?
Fri, Jan 10, 2 pm, 37-212

Prof. Ken Albert
Do We Have Free-Will?
Wed, Jan 15, 2 pm, 37-212

Prof. George Boalos
What Is Truth?
Wed, Jan 22, 2 pm, 37-212

Prof. Ned Block
What Is Truth?
Mon, Jan 27, 2 pm, 37-212

Prof. Paul Horwich
Is It Possible To Travel Back In Time?
Wed, Jan 29, 2 pm, 37-212

Third Brazilian Indoor Soccer Tournament
Joao B. de Aguiar
Jan 7-23, evenings, duPont Gym, court 1

Soccer designed for court use, want to play it? Form a team of 5 players and join us. Rush, 12 teams only. Trophies for the winners. Fee is \$25 per team. Sponsor: Brazilian Students Association. Contact: Vanderlei, x3-4169, or Ernesto, x3-6185.

In Search Of Excellence
Coleen V. Barry, Douglas S. Smith
Thurs, Jan 9, 16, 10 am-12 noon, E51-311

Videotape presentation of *In Search Of Excellence*: a condensed version of the PBS series, based on the best-selling book. Sponsor: Society of American Military Engineers. Contact: Richard J. Kury, 20E-1, x3-4471.

Teaching Experiences In China: What MIT Can Learn
Prof. John G. King
Thurs, Jan 9, 10:30 am-12 noon, 4-231

Talk on similarities and differences witnessed on visit to Fudan University in Shanghai. Sponsor/contact: Kim Wainwright, 4-352, x3-4841.

Speech Systems Laboratory Tour, Lincoln Laboratory
Joseph Tierney
Jan 9, 1-5 pm, Lincoln Laboratory, B-335

Topics will include low-bit-rate speech encoders, compact speech processors and vocoders; VLSI systems and lab facilities for speech recognition; robust speech processing and transformation systems. Transportation will be provided. Sponsor: Speech Systems Technology Group. Contact: Joseph Tierney, 181-7240, or Clifford Weinstein, 181-7241.

Chinese Classes
Ms. Ho
Sat, Jan 11, 18, 25, 1-3:30 pm, 1-136

Basic Chinese conversational classes, with emphasis on the understanding of the meaning of Chinese characters. Sponsor: Chinese Students' club. Contact: Lulu Tsao, 500 Memorial Drive, 494-1567.

Intermediate Israeli Folk Dance
George Kirby
Sun, Jan 12, 19, 26, 7-9 pm, 407 Student Center

If you know the basic mayim and yenenite steps, this course will open gates of advanced Israeli folk dance to you. Improve grasp of new dances and techniques. Sponsor: Hillel. Contact: Miriam Rosenblum.

Try Your Hand At Reporting
Carol Webb
Mon, Jan 13, 2:30-5:30 pm

Cover the Open Hearing On An Integrated Curriculum At MIT with the WMBR News. Meet at the station (in the basement of Walker). Pizza after the event. Sponsor/contact: Carol Webb, x3-6244.

Recursive Parameter Estimation
Lennart Liung
Tue, Jan 14, 2 pm, location to be arranged (first meeting)

Adaptation mechanisms in on-line algorithms. Both theoretical and user-oriented topics covered. Two additional meetings. Sponsor/contact: Lennart Liung, 35-425, x3-7089.

Changes

325 Women In Crime
Marnie
Tues, Jan 14, 7 pm, 66-110

224 Decision Analysis
Wed, Jan 8, 9, 10, 8:30 am, 37-212 (location)

475 Fusion Safety Seminar
Fri, Jan 10, 9 am-12 noon, NW16-213, 2-4pm, 34-101 (date, location)

14 Hybrid Finite Element Methods
Mon-Fri, Jan 13-17, 10-11:30 am, 33-319. Preregister by Jan 8. (date)

2059 Laboratory For Nuclear Science And Physics Department Lecture Series

Pions And Nuclei: Is Something Exotic Going On?
Prof. Robert Redwine
Fri, Jan 10, 2 pm, 4-145

2068 Niels Bohr Film Series
Tues, Jan 14, 66-110; Jan 21, 12 noon, E15-070 (location)

2071 Learning From The Past
Fri, Jan 10, 17, 24, 3:30 pm, 9-150 (location)

630 Sloan School Faculty Open House

Tom Allen
Mon, Jan 13, 10 am-12 noon, E52-598

Ed Roberts
Mon, Jan 13, 3-4:30 pm, E52-535

Arnie Barnett
Mon, Jan 13, 3:30-5 pm, E53-301

Lester Thurow
Tues, Jan 14, 10-11:30 am, E52-460

Tom Magnanti and Jim Orlin
Tues, Jan 14, 11 am-12 noon, E53-301

J.D. Nyhart
Tues, Jan 14, 3:30-5 pm, E52-542

133 High Resolution Multinuclear NMR
Mon, Wed, Fri, Jan 13, 15, 17, 1-2:30 pm, 2-190 (date, location)

4712 Dance Workshop Guest Instructor Series
Mon, Wed, Fri, Jan 13-17 3:30-5 pm, T-Club Lounge. Wed-Fri, Jan 22-24, 3:30-5 pm, T-Club Lounge (time)



It is Institute policy not to discriminate against individuals on the basis of race, color, sex, sexual orientation, religion, handicap, age, or national or ethnic origin in the administration of its programs and activities.

This list includes all nonacademic jobs currently available on the MIT campus. Duplicate lists are posted outside the offices of the Special Assistant (10-215) and in the Personnel Office (E19-239).

Information on openings at Lincoln Laboratory (Lexington, MA) is available in the Personnel Office.

Persons who are NOT MIT employees should call the Personnel Office on extension 3-4251.

Employees at the Institute should continue to contact their Personnel Officers to apply for positions for which they feel they qualify.

- Ken Hewitt 3-4267
- Dick Higham 3-4278
- Virginia Bishop 3-1591
- Appointments:
- Therese McConnell 3-4274
- Oveta Perry 3-1594
- Kenneth W. Chin 3-4269
- Sally Hansen 3-4275
- Appointments:
- Maureen Howard 3-4268
- Kim Bonfiglioli 3-4076
- Appointments:
- Nancy Collins 3-4077

Administrative and Academic Staff

Property Auditor, Property Office, to conduct physical inventories of all accountable equipment located at MIT. Will involve updating and correcting property records and improving techniques in conducting physical inventories. Duties will also include assisting in the process of reconciling property records with accounting records. Will work on special projects assigned. A Bachelor's degree in Accounting or Business, or equivalent combination of education and experience is required. Two years experience in accounting or property management also required. Knowledge of computer applications is desirable. Must be able to communicate with all levels of personnel to obtain needed information. Should be able to work under pressure to complete deadlines. Must be technically competent to recognize, describe, categorize, and record information about sophisticated equipment and its components. A86-657

Assistant to the Director, Telecommunications Systems, to provide technical and administrative support to the Director, Telecommunications Systems, in the implementation of an integrated telecommunications system. Will be the administrative and control data administrator for Telecommunications Systems and implement special projects as designated by the Director. A Bachelor's degree, preferably in telecommunications or information systems-computing, required. One to three years related work experience in telecommunications or information systems desirable. Good written and oral communications skills are required. A86-656

Communications Officer, Media Laboratory, to be responsible for coordinating corporate liaisons, publications, news and media relations and development. Will be responsible for reporting research results, arranging for visiting research affiliates, hosting corporate visits, initiating and maintaining cor-

porate connections with sponsoring companies in an electronic mail system. Additional responsibilities will also include producing, maintaining, and distributing all lab reports, including publishing optical videodiscs, CD-ROMs or floppy discs; sheltering Lab from media; designing and maintaining press kits and lab research archives to answer formal media requests; preparing and fact finding for approaches to corporations and foundations for funding of chairs and support of discretionary funds; and coordinating with Development Office. Some travel may be required. Bachelor's degree in Electrical Engineering or Computer Science and/or 3-5 years technical experience; 3-5 years public relations, communications, industrial liaison experience; or equivalent combination of education and experience. A86-655

Facilities Coordinator, Division of Comparative Medicine, to be responsible for the organization and monitoring of all building and technical support activities for DCM facilities at MIT and the Whitehead Institute. Will continually review preventive maintenance procedures, manufacturer's instructions and prevailing building support practice for meeting research needs and animal health requirements as specified by NIH, FDA, and other Federal and private agencies. Where appropriate will recommend new procedures and changes to existing operating and maintenance methods. Must have a thorough working knowledge of heating, ventilating and air conditioning and other building/electrical support systems. Will work closely with Environmental Medical Services and Physical Plant. Must have an associate degree in Mechanical Engineering and/or two to five years applicable experience or the equivalent combination of education and experience. A86-653

Librarian I/II, MIT Libraries, to act as head of LC Cataloging/Retrospective Conversion Section. Will utilize the OCLC Cataloging Subsystem and the Geac MARC Records Management System and supervise the 8 FTE members of the LC Cataloging/Retrospective Conversion Section whose responsibilities include: all aspects of cataloging English and foreign language monographs in all subject areas for which Library of Congress, Government Printing Office, or selected contributed cataloging is available; retrospective conversion of circulating titles; and holdings creation for multivolume works. Will formulate and interpret cataloging policy for Section in consultation with appropriate senior staff, and participate in Department and systemwide committees for procedures and/or policy formulation. MLS from an ALA-accredited library school required. Working knowledge of MARC formats and AACR2 as implemented by LC essential. Two years LC cataloging experience necessary; 1 year original cataloging experience preferred, both preferably in a research library. Knowledge of LC classification highly desirable. Advanced knowledge of OCLC cataloging subsystem required. Minimum 1-2 years supervisory experience needed. Appointment to Librarian II level requires three years of professional experience. C86-171

Chief of Environmental Medicine, Medical Department, seeks physician to provide clinical/program leadership in environmental assessment and surveillance programs at MIT. MPH or board certified/eligible in occupational medicine/preventive medicine. Must have strong interest in clinical/toxicological aspects of environmental medicine. Department is multispecialty group practice serving MIT and two large affiliated laboratories. C85-170

Manager, Microcomputer Center, Information Services, to manage and supervise the administrative, technical, and operational activities involved in the recommendation, sale, and support of office and laboratory computer workstations and associated peripheral devices, software, manuals, and supplies to departments, laboratories, and individuals at the Institute. Will work with other Information Systems managers and technical staff to determine items to be stocked by or ordered through the Microcomputer Center based on Institute Information technology plans and requests from departments and laboratories, work with vendors, staff, and others needed to expedite receipt by customers of information, goods, and services; manage operation of the Center, including sales, inventory control, and consulting; and publicize to the MIT community the information

goods, and services available through the Microcomputer Center as well as the application consulting, hardware maintenance, network services, and training available from other Information Systems components. This position requires a creative individual who will be able to guide the growth in services provided by the Microcomputer Center as it diversifies to include sale of third-party components, expands the selection of software available, and changes to adapt to the changing needs of the Institute. A Bachelor's degree or equivalent combination of education and experience is necessary. Extensive experience in using personal computers and reasonable supervisory experience are required. Experience in retail personal computer sales management is highly desirable. A85-652

Donor Relations Coordinator, Office of Communications/Resource Development, to write gift acknowledgments and other development related correspondence for senior officers; supervise production and distribution of correspondence; develop tracking and recordkeeping systems and supervise their maintenance; request and write reports, and maintain monthly report tracking system; perform research and provide support to assistant director of communications in handling special mailings, campus visits, and other projects. Must have excellent writing and proofreading skills. High levels of responsibility, organization, and self-motivation are necessary. One to three years of experience in development, particularly at MIT, and/or familiarity with MIT, are desirable. Letter describing qualifications and interest in position must accompany resume. A85-651

Medical Director and Department Head, Medical Department, to act as Directing Head of the Medical Department consisting of comprehensive health services to the MIT community (faculty, staff, students, and their families) through the operation of a licensed, JCAH-accredited, 125,000-visit outpatient and 18-bed inpatient facility, an HMO, and an environmental medical service. The medical staff consists of 23 full-time and 56 part-time physicians representing all the major specialties. The Department also has a Social Work Service, a Dental Service, and Nursing Service. Will be responsible for the quality of medical care in the MIT community and serve as advisor to the President of MIT on all health-related matters. Additional responsibilities include environmental health programs in a complex, research-oriented campus community and membership in the governing board which serves as a board of directors for the Department within the university structure. Must be licensed, Board qualified physician with a distinguished record of clinical experience and proven leadership qualities. Familiarity with an academic environment is desirable. A85-650

Analyst Programmer I, Administrative Systems, to serve computer users through consultation, problem diagnosis, programming assistance, documentation, troubleshooting and education on computers. Will provide programming assistance, prepare and/or review documentation for existing and new programs; search for special information on computers, programs and systems; interface with hardware and software suppliers as required to assure efficient installation procedures; participate in professional conferences in computer science and related activities. May act as group leader in task assignments. A Bachelor's degree in Computer Science or related fields or equivalent combination of education and experience is necessary. Reasonable experience in computer programming or related activities preferred. Excellent oral, written and interpersonal skills desirable. PLI and database experience required. A85-638

Assistant Dean for Development, School of Humanities and Social Science, to develop existing fund-raising activities within the School, and to participate in planned future campaigns. Will work with the Dean and Development Office to solicit likely major prospects for school support including alumni, friends, corporations, and foundations; coordinate school activities with MIT's Development Office; work with Alumni Association and the Institute's volunteer leadership; and work with Institute Faculty and central administration to develop initiatives. Previous fund-raising experience, including solicitation of capital gifts, excellent oral, written, and interpersonal skills, as well as some travel and eve-

ning/weekend work required. Familiarity with and/or experience at MIT is desirable, although experience at a large research Institute would be considered. Bachelor's degree or higher essential. A85-621

Systems Programmer II-Operations and Software Development, Project Athena, to be part of a System Development Group. Will assist in the development of software for the Athena system including a distributed file system, graphics interfaces, and real-time systems. Will develop, design, implement, and document modifications to vendor supplied software, such as UNIX and language compilers, as required for the Athena environment. Will also investigate and resolve problems involving complex systems and networks of systems. Bachelor's degree or equivalent combination of education and experience is required. Three to five years of professional experience in systems programming or combined experience in systems programming with related programming activities is required. Should have experience with the UNIX operating system and at least one or more of the following languages; C, FORTRAN, Lisp and Pascal. Professional experience should include work in at least one of the following areas; local area networks, user interfaces, operating systems or compilers. Good communication skills are highly desirable. A85-616

Sr. Systems Analyst, Administrative Systems, to analyze user information requirements and design information handling systems to satisfy requirements. Will perform feasibility studies for major new or revised systems; define client/user system objectives and requirements; prepare systems external design specifications; analyze personnel and resource requirements for new and modified systems/programs; ensure adequate system documentation; direct preparation of user manuals; provide functional supervision and maintain liaison with client/user personnel. A Bachelor's degree or equivalent combination of education and experience is necessary. At least five years experience in systems analysis and computer-related activities is essential. Knowledge of PL/1 essential; knowledge of ADABAS preferred. A85-606

Sr. Analyst Programmer, Administrative Systems, to analyze user information requirements and design information handling systems to satisfy requirements. Requires overall knowledge and experience with all phases of information system development and concepts. Will perform feasibility studies for major new or revised systems; define client/user system objectives and requirements; prepare systems external design specifications; direct preparation of user manuals, and maintain close liaison with client/user personnel. A Bachelor's degree or equivalent combination of education and experience is necessary. Minimum of five years experience in systems analysis and computer-related activities desirable. A85-557

Systems Programmer II, Information Systems, to work in the Multics Systems Support Group performing computer system failure analysis and software integration including the design, implementation, and maintenance of systems software. Requires a Bachelor's degree or the equivalent work experience with 3 to 5 years systems software experience. Programming in the PL/I plus familiarity with Multics systems essential. Good communication and writing skills are required. A85-527

Assistant Manager, Maintenance, Housing and Food Service, to assist the Manager of Maintenance in supervising and coordinating all phases of department maintenance, renovation, and construction programs. Will work with Housing and Food Service Managers and support groups. Identify, develop and communicate plans of all construction jobs. Assist the Manager of Maintenance in all phases of cost and estimation for repair and renovation programs. Perform facility inspections. Contribute ideas. Interpret structural plans as required. Associate degree and/or equivalent combination of education and experience with a minimum of five years maintenance supervisory experience required. A85-516

Systems Analyst, Administrative Information Systems, will design, implement, maintain and tune ADABAS databases; participate in developing and documenting database procedures and tools. Apply database software techniques to administrative information systems being developed, converted or maintained. Should be familiar with operating systems, tp monitors, computer languages and have excellent communications skills. Experience with ADABAS, NATURAL, IBM's VM/CMS, OS/VS1, PL/I, and COBOL. A84-419

Sponsored Research Staff

Technical Staff, Physics, to be in charge of preparation and development of lecture demonstrations. Should have broad knowledge of physics with strong interest in teaching. Will work with physics faculty, staff, and students. Experience in teaching and sense of esthetic qualities of demonstrations are important requisites. Experience with mechanical and electrical construction techniques a necessity. Bachelor's degree in Physics or Electrical Engineering essential and prior experience helpful. R86-890

Technical Assistant, Center for Cancer Research, to do research in the molecular biology of growth factor action. Will be responsible for organization and maintenance of the laboratory. In addition, will conduct experiments involving recombinant DNA technology and mammalian cell culture. Requires a BA in Biology, and previous laboratory experience necessary. Must be able to work independently. Preference given to those candidates with previous experience in molecular genetics. R86-889

Staff Engineer, Harvard-MIT Division of Health Sciences and Technology, to be responsible for the design and maintenance of an experimental medical system for treatment of cancer by hyperthermia with scanned focused ultrasound and/or with RF and microwave electromagnetic radiation. Will involve interfacing of DEC, HP, and IBM computers and fore-

ground/background programming for real-time control of fractional horse power motors to control a robotic arm with six degrees of freedom, for the use of IEEE-488 Bus based instruments for control of data acquisition and for programmed control of Megahertz frequency RF power sources to drive high impedance, high Q ultrasonic transducers and RF radiating horns. Involves mechanical design of robotic system and insonation heads. Will have to contribute to design and implementation of a second generation hybrid system utilizing both stepper and DC servo motors for hyperthermia by combined ultrasonic and RF fields. Minimum of BS in Electrical Engineering required. Also requires knowledge and experience in digital and analog circuit design and in biomedical temperature measurements in ultrasonic and RF fields. R86-887

Research Engineer, Energy Laboratory, to join the Aerosol Characterization Group, a multidisciplinary team involving chemical engineers, material scientists and inhalation toxicologists in research on the physical and chemical characterization of inorganic combustion-generated aerosols. A Master's degree in physical sciences, mechanical or chemical engineering required with a minimum of 2-3 years experience in high temperature catalysis studies or chemical characterization with a strong background in coal combustion technology, aerosol science and instrumentation. Demonstrated effective written, oral and interpersonal skills also required. R86-886

Research Specialist, Research Laboratory of Electronics, to provide overall engineering support for Auditory Psychophysics Group which engages in research on hearing, hearing aids and tactile aids for the deaf. Primary responsibilities include construction, troubleshooting, and collaborative design of audio and electromechanical equipment which is often computer controlled. Other responsibilities include diagnostic programming and assisting electrical engineering students with laboratory projects. BS degree in Electrical Engineering, 3-5 years direct/related experience and the ability to work independently required. R86-882

Technical Assistant, Center for Cancer Research, to work in a laboratory concerned with research in the area of molecular biology of animal viruses. Will be in charge of maintaining animal cell lines in tissue culture and will also be responsible for preparing and titering virus stocks. In addition, will collaborate in experiments on the molecular biology and biochemistry of animal viruses and mammalian cells. The techniques involved are nucleic acid biochemistry, hybridization, and general analysis of macromolecular components of mammalian cells. Will also be responsible for maintaining some laboratory supplies and equipment. BS in basic science and working understanding of current research in molecular biology necessary. Experience in research in a modern biological laboratory helpful. In particular, previous experience with tissue culture techniques, nucleic acid or protein biotechnology is desirable. Good interpersonal skills and the ability to work with others essential. R85-881

Research Engineer, Earth, Atmospheric, and Planetary Science (full or part-time), to develop seismic recording equipment for use on the deep sea floor. Will design, build, and test a digital recording system operated by a microprocessor. Will be involved in all phases of the development process, as well as work occasionally on oceanographic vessels. A BS degree in Electrical Engineering or Computer Science or equivalent work experience is required. Some experience with mechanical systems is also desirable. Must be able to work cooperatively with others. R85-880

Research Engineer, Earth, Atmospheric, and Planetary Sciences, to develop, be responsible for, and operate seismic recording instruments for use on the deep sea floor. Must be able to design, build, test and deploy field instruments with both mechanical and electronic subsystems. Will require involvement in all phases of the development process, as well as occasional work at sea on oceanographic vessels. Must be a Mechanical Engineer with a BS degree in engineering, or equivalent work experience. Strong internal motivation and an ability to supervise student assistants will be necessary. R85-879

Technical Assistant, Statistics Center, to act as member of interdisciplinary team within the Concurrent Computing Group. Will be responsible for configuration and maintenance of group's multiprocessor systems including both hardware and software. In addition will be responsible for establishing LAN for the project machines and for setting up gateway between Intel OPENNET and TCP/IP systems. Requires minimum of 3 years of hardware experience, and working knowledge of iRMX and Xenix operating systems. Experience with Berkeley UNIX 4.2 highly desirable. R85-878

Research Staff Scientist, Center for Space Research, to experiment in balloonborne measurements of the cosmic background radiation anisotropy in the microwave and infra-red spectral regions. Areas of expertise should include electronics, cryogenics, high-altitude gondola instrumentation, microwave and submillimeter optics and detection techniques, and data analysis. PhD in Physics, Astrophysics or Astronomy. Knowledge of COBE satellite FIRAS instrument and data pipeline as well as knowledge of COBE satellite DIRBE instrument and data pipeline. Experience in computer hardware and software for real-time data collection and analysis on VAX/VMS and PDP/11 machines required. R85-876

Fiscal Officer, Laboratory of Architecture and Planning, to provide assistance to the Administrative Director of the Aga Khan Program for Islamic Architecture in fiscal planning and supervision of financial matters for all aspects of the program. Responsibilities include development and maintenance of a financial management plan; preparation of all fiscal reporting statements, reports, and budgets; establishment of control systems for cost effectiveness; and management of computer-based accounting system to be implemented in the future. Will report to the Administrative Director of the Aga Khan Program and will be responsible for

communication and technical coordination with appropriate financial officers at MIT and Harvard University. A bachelor's degree or equivalent combination of education and experience, and at least 2 years administrative financial experience are required. Familiarity with MIT and/or Harvard University is desirable. Familiarity with electronic spread sheets preferred. R85-875

Library Support Staff

Library Assistant IV, Retrospective Conversion, MIT Libraries-Catalogue Department (temporary, part-time - 17.5 hours/week), to participate in ongoing retrospective conversion of circulating titles to machine-readable form by converting MIT bibliographic records of Library of Congress-classed monographs for which Library of Congress or contributed records exist online. According to requirements of the OCLC Cataloguing Subsystem, will assign appropriate content designators to MIT bibliographic data according to the MARC format, edit and update catalogue data online to conform to MIT policies and OCLC bibliographic input standards, and add MIT holdings information. Will also assign barcodes to converted holdings, maintain statistics of titles converted, and perform auxiliary assignments as required. High school graduate or equivalent necessary. Some college study preferred. Requires 2.5 years direct/related experience. Experience using OCLC Cataloguing Subsystem and retrospective conversion highly desirable. Accurate typing of 40 wpm and attention to detail essential. This is a temporary position ending December 31, 1986, with possible renewal for second year. Will work Monday-Friday, 7:00-10:30 a.m. Saturday hours negotiable. L86-166, L86-167

Library Assistant III, Dewey Library, to act as Stack Supervisor. Will be responsible for shelving and maintaining in good order the Library's general book collection and other special collections. Will conduct initial searches for materials reported missing from the Library's collections, and maintain required statistics. Will perform inventory or shelf-reads for the general book collection as required; oversee transfer of material from general library stacks to storage areas; oversee the work of three or more student assistants. Will assist as needed at the Library's Circulation and Information Desk. Will be expected to learn and to operate Deac automated circulation system. Occasional evening or weekend work may be required, based on a prearranged schedule. Minimum of one year direct/related experience required. Post high school education can count toward experience. Familiarity with typewriter keyboard desirable. Ability to organize tasks and a variety of duties, and to work with a minimum of supervision as well as the ability to adapt to an automated environment essential. Physical stamina is important for stacking library materials. L86-162

Library Assistant III, Barker Engineering Library, to act as Binding and Serials Assistant. Will pull and prepare journals to be bound and update binding records including manual records and records on the personal computer, and process serial updates, including standards and loose-leaf updating services. Will be responsible for the processing of MIT reports; training and directing students in selected routine procedures; filing in one section of the author/title catalogue; and some journal check-in, as well as assisting with projects when needed. High School graduate or equivalent necessary. Minimum 1 year direct/related experience required. Post high school education may count towards experience. Ability to handle detail, work independently and organize a variety of tasks under conditions of changing priorities necessary. Accurate typing required, speed not essential. NON-SMOKING OFFICE L86-152

Library Assistant III, Barker Engineering Library (part-time), to provide circulation services to library patrons. Will charge and discharge books, renew material and perform other circulation functions using an online computer system. Will instruct patrons in the use of public access terminals and perform additional duties as assigned. High school diploma or equivalent is necessary. Minimum of one year related experience is necessary. Post high school education may count towards experience. Experience with an interactive computer system helpful; ability to interact successfully with other staff members and with patrons in a hectic environment is essential. Punctuality necessary. (17.5 hrs/wk, Monday-Thursday, 3-6:30, Friday, 3:30-7pm) L86-150

Library Assistant III, The Libraries-Institute Archives and Special Collections, (part-time), to act as records management assistant. Duties will include retrieving and refiling documents from storage facilities as requested by MIT personnel. May hand deliver and pick up materials; maintain records and compile statistics related to retrieval activities; initiate telephone contacts and routine correspondence; shelve and maintain records of management holdings; identify and compile lists of records ready for destruction; and perform special assignments as required. Minimum high school graduate or equivalent with 1 year direct/related experience required. Good interpersonal skills and the ability to understand MIT administrative structure and record-keeping practices essential. L85-137

Secretary/Staff Assistant

Administrative Secretary, Economics, to work with 2-3 faculty in a very busy, fast-paced office. Will prepare and edit manuscripts and classwork on IBM using XYWrite; revise older work done on Lanier word processor. Duties will also include scheduling frequent meetings, workshops and luncheons, travel itineraries, filing, maintaining some accounts and filing systems, and handling extensive correspondence. Strong administrative and interpersonal skills, initiative and readiness to follow through essential. Previous experience with the IBM PC and willingness to learn Lanier

word processor necessary; some experience with technical typing preferred. Ability to work independently and under pressure necessary. Must enjoy working as part of a team. Minimum 4.5 years direct/related experience required. B85-136

Sr. Secretary, Bursar's Office, to provide secretarial support for Bursar, Associate Bursar, Assistant Bursars (2), and Student Counselors (4). Duties will include answering or redirecting routine student inquiries, scheduling appointments, arranging travel, copying and maintaining files, ordering supplies, preparing various types of Institute forms, handling payment of invoices, and screening incoming mail and telephone calls. Will also be custodian of petty cash. Will perform additional duties as necessary. Attention to detail, good organizational skills, and flexibility important. Minimum 2.5 years direct/related experience required. B86-176

Sr. Secretary, Laboratory for Nuclear Science/Center for Theoretical Physics, to provide secretarial support for several scientists including two Institute Professors and the Director of the Laboratory for Nuclear Science. Will be responsible for typing correspondence, reports and occasional technical documents. Duties will also include arranging meetings and travel, maintaining files, and taking dictation using dictaphone. Will also coordinate complicated calendars, do heavy copying, maintain bulletin boards, distribute and forward mail, and close up the Center each day at 5 pm. Excellent office skills and willingness to learn Mass11 word processing and TeX typesetting program necessary. Good interpersonal and organizational skills essential. Minimum 2.5 years direct/related experience required. B86-173

Sr. Secretary, Civil Engineering, to serve as Secretary to Administrative Officer. Will be responsible for weekly, hourly, and student payrolls; processing research proposals and academic and research staff appointments; handling routine correspondence including advising prospective visitors; interacting with a large number of MIT administrative offices, and serving as a resource to faculty and students in the Department. DecMate II word processing experience and spreadsheet experience preferred. Minimum 2.5 years direct/related experience required. B86-170

Sr. Secretary, Whitaker College of Health Sciences, Technology and Management (part-time - 21 hours/week), to work with a Professor of Nuclear Engineering, with a joint appointment in the Whitaker College, and a part-time Visiting Scientist. Will work on matters related to the Radiological Sciences Graduate Training Program and an evolving program in biological and medical imaging. Duties will include typing, word processing, preparation of routine Institute forms, keeping track of purchasing requisitions, answering phones, and reception. DEC word processing, technical typing (Greek symbol), and dictaphone experience strongly preferred. Should be reliable and well organized. Minimum 2.5 years direct/related experience required. B86-169

Sr. Secretary, Sloan School of Management, to support both the Office of Alumni Relations and Management of Technology Program, Sloan School. Duties will include typing all correspondence and using Wang and PC word processing systems; answering telephones; handling incoming and outgoing mail, maintaining all files and records; scheduling appointments, meetings and social affairs; helping alumni interface with School; making travel arrangements; preparing various Institute forms and helping maintain monthly accounting statements and receiving visitors. Must have good organizational and interpersonal skills. Excellent typing of 50 wpm with accuracy and proofreading skills more important than speed. Familiarity with word processing systems preferred but will train. Minimum 2.5 years direct/related experience required. NON-SMOKING OFFICE B86-157

Sr. Secretary, Humanities-History (part-time), to perform secretarial duties for 13 faculty members. Duties will include typing correspondence, exams and manuscripts; answering phones; maintaining files; copying; monitoring student copy expenses; monitoring records of proposed and completed History Concentrators and maintaining their current addresses; ordering course books and desk copies for professors; maintaining office supplies; compiling information for Institute reports, and assisting with the Fall and Spring History Faculty Lecture Series. Must have excellent typing skills and be attentive to detail, and have strong interpersonal skills, with the ability to set priorities. Familiarity with and/or willingness to learn word processing on DEC-mate word processors and IBM personal computers essential. Minimum 2.5 years direct/related experience required. Will work 20 hours per week from 1:00-5:00; position may become full time. B86-153

Sr. Secretary, Harvard-MIT Division of Health Sciences and Technology, to perform secretarial duties for the Biomedical Engineering Center for Clinical Instrumentation. Duties will include the taking and transcribing of dictation involving complex technical terminology, and typing of letters, technical manuscripts, tables and charts. Will be responsible for the accuracy of material typed, proper format, punctuation and spelling. Will screen telephone calls, make referrals and appointments, and independently handle many calls. Will independently reply to some letters and compose others from oral instructions; routinely verify information on monthly financial statements, and assemble information for budgeting; and assume responsibility for many office functions such as mail distribution, organization and maintenance of files. Good organizational skills and the ability to grasp Institute procedures quickly is necessary. Accuracy and the ability to work well under pressure in this busy office essential. Secretarial school or college training with 2.5 years direct/related experience required. Excellent typing skills essential. Good arithmetic and communication skills preferred. Knowledge of word processing (text editing) desirable. B86-147

Sr. Secretary, Center for Space Research, to schedule and coordinate appointments, meetings, and exams, for 4 faculty and senior staff in small (20-person) aerospace biomedical engineering research lab. Will manage 9 line telephone and answering machine; assist students and visitors; type, and proofread, using Word Star based word processor, working from drafts and dictaphone. Will maintain scientific and administrative files; copy forms, class notes, and correspondence; sort and review mail; answer reprint requests; order and maintain office supplies. Ability to work under pressure and independently necessary. Requires gaining an in-depth knowledge of workings of Man vehicle Lab; and ability to act as effective liaison with both the academic department and the Center. Minimum 2.5 years direct/related experience required. B85-144

Sr. Secretary, Mechanical Engineering, to provide secretarial and administrative support for one faculty member. Duties will include preparation of technical manuscripts and reports, updating mailing lists and distributing materials, answering telephone inquiries and correspondence, preparing teaching materials. Involves extensive interaction with students and international companies funding research. Excellent technical typing skills essential. Ability to work independently, good organizational skills, and attention to detail important. Excellent interpersonal skills necessary. Minimum 2.5 years direct/related experience required. B85-138

Sr. Secretary, Sloan School of Management, to perform secretarial duties for three professors in the Economic, Finance and Accounting Group of the Sloan School. Will type, proofread and reproduce manuscripts, reports, exams, and correspondence, often of a technical nature. Some work will require transcription from dictaphone, and good command of the English language. Will assist with preparation of course materials and notes, as well as for meetings and seminars. Additional responsibilities will include answering student inquiries, answering phones, scheduling appointments, arranging travel, copying, maintaining files and responding to routine inquiries. Familiarity with and/or willingness to learn Wang word processing and IBM-PC desirable. Excellent typing, proofreading and general office skills, as well as good organizational skills and the ability to work under minimal supervision essential. Technical typing and dictaphone skills needed. Minimum 2.5 years direct/related experience required. B85-109 B85-110

Sr. Secretary, Center for Information Systems Research, to provide secretarial support for two CISR research associates and handle the CISR Working Paper Series. Will involve frequent contact with managers from private and public sector organizations, as well as with faculty and students from MIT and other universities. Will type correspondence and reports from rough draft or dictaphone, using Wang word processor; answer phones; make travel arrangements; prepare high-quality presentation materials, often using Xerox Star workstation. Will process working paper orders and payments; track subscriptions; and maintain inventory of papers. Will be a part of a support team for seminars and the annual conference of CISR. Excellent secretarial skills, word processing, and good interpersonal skills essential. Ability to handle detail with accuracy, and flexibility important. Minimum 2.5 years direct/related experience required. NON-SMOKING OFFICE B85-033

Sr. Secretary, Sloan School of Management, to work for three full-time faculty in the Operations Management subgroup of the Management Science Area. Will type and proofread correspondence, course materials, manuscripts and copy as appropriate; maintain complex calendar; schedule appointments; make travel arrangements; answer phones; interact with students and outside visitors; process mail, monitor accounts; order supplies; and perform other duties as assigned. Should be willing to assume responsibility and work under minimal supervision, handle confidential material, work under pressure and be responsible for accuracy of materials. Technical typing and knowledge of word processing and/or willingness to learn both necessary. Knowledge of MIT desirable. Minimum 2.5 years direct/related experience required. Excellent typing and organizational skills required. NON-SMOKING OFFICE B85-950

Sr. Secretary, Center for Information Systems Research, to provide secretarial support to CISR Associate Director. Will perform secretarial and administrative duties to support seminars, special projects, and accounting activities. Will involve frequent contact with managers from private and public sector organizations as well as with faculty, students, and administrators at MIT. Will type and proofread correspondence and reports from rough draft or dictaphone often using word processor; answer phones; make travel arrangements; answer seminars and meetings involving CISR's corporate sponsors; process, and assist in accounting-related tasks, such as preparing requisitions and reconciling monthly statements. Excellent secretarial skills required. Word processing experience essential. Good interpersonal skills and some bookkeeping experience helpful. Minimum 2.5 years direct/related experience required. NON-SMOKING OFFICE B85-862

Secretary, Center for International Studies (part-time), to provide general support to research center administrative headquarters. Duties will include typing correspondence and reports, filing, and assisting with organizing seminars and mailings. Must have good communication skills, good typing skills, ability to work from taped and handwritten materials, and familiarity with or willingness to learn Wang word processing system. Must be able to work independently once tasks are assigned. Minimum 1 year direct/related experience required. B86-165

Secretary, Center for International Studies (part-time), to type letters and memoranda, file, answer phones and perform general secretarial and support duties for MIT/Japan Science and Technology Program. Excellent typing skills required. Must be able to work indepen-

dently once tasks are explained. Minimum 1 year direct/related experience required. B86-164

Secretary, Aeronautics and Astronautics (part-time), to assist Sr. Secretary in support of 5 faculty members and associated laboratory personnel. Will type correspondence and classnotes, copy, answer phones, file and arrange appointments and travel. Excellent general typing skills as well as a willingness to learn technical typing essential. Minimum 1 year direct/related experience required. (20 hrs/week) NON-SMOKING OFFICE B85-145

Secretary, Media Laboratory, to provide general secretarial support in Media Laboratory Headquarters. Will involve frequent contact with faculty, Institute offices, and outside agencies and sponsors; extensive phone contact and accurate receipt of messages. Will proofread and type correspondence and documents; use electronic mailing system to send/receive correspondence to/from Director; file and maintain accurate office records, make travel arrangements and maintain petty cash. Strong organizational skills and attention to detail required. The ability to work well under pressure, independently, and to recognize and set priorities essential. Will handle confidential material. Familiarity with word processing and a minimum of 1 year direct/related experience required. Knowledge of MIT desirable. Minimum typing speed of 45-50 wpm necessary. NON-SMOKING OFFICE B85-133

Technical Support Staff

Technical Assistant, Medical Department (part-time), to be responsible for administering to patients required Health Screening tests (EKG, Glaucoma, Exp-pirogram, TB Vision Tests, Blood Pressure, height and weight). Will complete requisitions for laboratory, TB and other diagnostic tests, coordinate and refer test results to reviewing physician, and handle other related clerical, statistical and computer input duties pertinent to Health Screening Program. Will also provide administrative support to Department's New Student Physical Exam Program. Previous experience as a trained medical assistant required. Must have the ability to work independently, relate well to patients and medical staff and have excellent organizational and clerical skills. Good typing required. Will be expected to cover full days in the absence of other employees. (20 hrs/week, 9-1pm) T86-155

Architectural Designer/Draftsperson, Physical Plant, to prepare plans for Institute remodeling and alteration work. Must be able to develop a project from preliminary estimating through design and working drawings. Some field supervision experience helpful. Minimum five to ten years experience in the architectural field required. Ability to work with minimal supervision required. Knowledge of electrical and mechanical systems with prior experience in school or institutional remodeling work preferred. T85-121

Office Assistant

Journals Production Assistant (Editorial Assistant), MIT Press Journals (part-time - 17.5 hours/week), to send proofs, manuscripts, and mechanicals to editors, suppliers, manufacturers, illustrators and freelancers. Will also order courier pickups, wrap packages, follow schedule for deliveries, paste up corrections, and clean mechanicals for printer. Will check and correct, if necessary, all illustrations, figures and tables, and handle production in absence of Production Manager. Duties also include pasting up and correcting advertisements; handling design and production of pub-set ads; coordinating ad availability with Advertising Assistant and Production Manager; creating file of in-house ads, to be kept current and camera-ready; creating file of order cards, to be kept current; and keeping exchange ads camera-ready and current. Will assist Promotion Manager in design and paste-up of direct mail pieces and promotional materials; handle quarterly billing for offprints and alterations charges and follow up problem bills. Will paste-up for Circulation when needed, and produce stationery and forms for department and editorial offices. College degree or equivalent experience required; at least one years experience in book or periodical publishing (production) preferred. Basic knowledge of paste-up and typographic specification required; knowledge of graphic arts terms helpful; familiarity with printing and typesetting procedures and some familiarity with proofreading marks and copyediting desirable. Ability to work under pressure of deadlines necessary and willingness to learn computer-operated invoicing program essential. S86-172

Administrative Assistant, Medical Department, to provide administrative support to the Medical Department's Pharmacy Service (extremely busy, patient-oriented Service, staffed with two full-time and one part-time pharmacists filling an average of 1,200 prescriptions per week). Duties will include significant purchasing activities including weekly ordering of medications, processing invoices for payment, monitoring and updating current prices, review of 200 purchasing contracts, and maintaining detailed purchasing records and inventory control. Responsible for managing pharmacy computer data files and will act as liaison with computer company and in-house Systems Information personnel. Also responsible for daily cash and charge receipts, preparation of monthly financial reports, assistance with budget preparation, and the collection and preparation of Quality Assurance reports. High school graduate with college degree preferred. Four to five years work experience in progressively responsible position, preferably with purchasing and financial duties, preferred. Good interpersonal, organizational, word processing, and computer skills essential. Ability to work independently necessary. S86-171

Administrative Assistant, Treasurer's Office, responsible for control of central gifts received account, checking all cash deposits, security credits, transfers and

corrections. Will check daily batch listings from terminals against backup on transmittal sheets; log security gifts and corrections, and maintain securities register. Will process gifts of securities, bank notifications, broker letters and donor acknowledgements, and handle telephone inquiries. Must be good with figures and details; accounting background helpful. Good typing skills, accuracy and dependability necessary. Basic knowledge of securities helpful. Minimum 4.5 years direct/related experience required. S86-163

Administrative Assistant, Materials Processing Center, to perform a variety of administrative and secretarial duties for a Principal Research Staff member. Duties will include monitoring of accounts, purchasing, and budgetary material (2,000,000+ volume), establishing and maintaining file/database systems; typing/proofreading reports, manuscripts and other material; proofreading/correcting drafts and galley proofs received from outside publishers; maintaining pricing and related information from Graphic Arts and outside vendors; coordinating complex travel, meeting, and special events; handling office inquiries; and performing related duties as required. Minimum 4.5 years direct/related experience required. Business degree preferred. Knowledge of Apple Macintosh, word processing, and MIT procedures desired. Strong interpersonal skills, ability to work independently and attention to detail preferred. NON-SMOKING OFFICE S86-148

Administrative Assistant, Program in Science, Technology and Society, to perform administrative and secretarial duties for the Program in Science and Technology for International Security. Will maintain research accounts, monitor monthly accounting statements, and prepare yearly budget projections; type and proofread research papers (some technical), manuscripts, proposals and correspondence; order supplies, arrange travel, copy, answer phones, and file. Also responsible for ordering books, journals, and research papers for research library, as well as maintaining the library. Strong interpersonal skills important because of frequent interaction with faculty, students, and visitors. College background and knowledge of MIT preferred. Ability to work under pressure, and prioritize essential. Minimum 4.5 years direct/related experience required. S85-146

Sr. Office Assistant, Purchasing and Stores, Office of Laboratory Supplies, to support OLS business, accounting, and purchasing functions. Will type purchasing orders, change orders and reports, process invoices for payment, and resolve problems with vendors and MIT Accounts Payable. Will assist in terminal screening of Purchase Order Commitment/Signature Authorization system. Will also batch sales requisitions for computer input and resolve computer error list problems. Duties will include becoming familiar with gas cylinder deposits, petty cash, furniture procedures, and statement errors in order to fill in during absence of other personnel. Minimum 2.5 years direct/related experience required. Typing speed of 40+ wpm essential. S86-174

Sr. Office Assistant, MIT Press, to assist in book promotion. Will coordinate and maintain book and author information; send out author questionnaires; create order forms and other handouts and assist with the combined program for exhibits. Will process text exam and desk copy requests, create new books flyers, maintain the MIT Press bookbuyers mailing list and handle envelope inventories for direct mail. Will process inquiries; answer phones; sort and distribute mail; monitor supplies; copy; file; and proofread. Good typing and experience with word processing desirable. Excellent organizational skills essential. Must be able to handle numerous details and assignments and to work under deadline pressure. Ability to work independently and a good telephone manner necessary. Interest in book publishing important. Minimum 2.5 years direct/related experience required. S85-116

Office Assistant, Comptroller's Accounting Office, to process invoices through CRTs. Will perform occasional review of vendor statements, prepare invoices for CRT operators and perform other duties as assigned and required by supervisor. Some overtime will be required. Good typing ability and knowledge of CRT operation desirable. Minimum 1 year direct/related experience required. S86-160

Office Assistant, Resource Development, to provide general office support and some secretarial support for the Assistant Director responsible for senior officer research and the Business and Personnel Manager. Will answer telephones; act as key operator for copiers; perform courier service when necessary; type documents as needed; copy and distribute correspondence on a daily basis, and act as backup for mail distribution and copying. Will provide secretarial services including typing memos and short letters, and filing and maintaining appointment calendar. Will assist in processing payroll, invoices and requisitions for payment. Minimum 1 year direct/related experience required. Post high school education will count towards experience. Good typing, ability to use word processor/willingness to learn, good organizational skills and attention to detail necessary. Good interpersonal skills essential in this busy office. NON-SMOKING OFFICE S86-159

Office Assistant, Plasma Fusion Center, to provide reception, computer input, and general secretarial support for the Headquarters Office of the Mirror Confinement Division. Work will include handling phones; assisting visitors; typing, proofreading and filing of general correspondence; ordering of office supplies; entering of simple data into well established database on computer; copying; delivering of messages and information to the Division personnel, and mailing of correspondence and other announcements. High School graduate or equivalent required as well as 1 year of direct/related experience. Should have good interpersonal and organizational skills for this busy office. S86-156

Head Custodian, Endicott House (Dedham, MA), to perform routine maintenance, cleaning and repairs of the heating, air-conditioning, plumbing and electrical systems. Will direct 4 employees in the general cleaning of Endicott House and Brooks Center. Will perform light painting, carpentry and general repairs; assist housekeeping department with heavy duty vacuuming and cleaning, washing, and waxing floors. Help grounds crew when necessary; control distribution of keys and maintain locks. Perform regular cleaning of fire and smoke alarms, check fire extinguishers, clean ice machine filters; oil all motors, control light timers, run errands for all departments and will be on emergency call when necessary. High School diploma and general experience in the areas of electrical work, plumbing, heating, air conditioning and carpentry preferred. S85-143

Service Staff

General Helper, Graphic Arts Service, to perform a variety of routine jobs such as running copy machines, stapling, collating, binding, cleaning, oiling, and supplying raw materials to the bindery, press room, and ozalid room. Will work in various groups doing repetitious work as assigned. Needs instruction and supervision. Graduation from high school or equivalent is required. H86-315

Dormitory Patrol, Housing, to work as directed by the Evening Manager or other appointed supervisor (work week of consecutive five days and two days off, from twelve midnight to eight am). Will perform a series of scheduled watch rounds in an assigned building or buildings, be observant for hazardous conditions (i.e., fire, safety, utility failure, etc.), take corrective action and call Physical Plant department for emergency service. Will report all trespassers and disturbances to Campus Police, and submit written report to the Manager of all activities at the end of each shift. Must be able to work night shift. Must be physically able to walk stairs while making the watch rounds. H86-310

Technician A (E-M), Haystack Observatory, to spend a major part of time maintaining and operating cryogenic refrigerator systems both on the Haystack antenna and at ground-level stations, under the supervision of engineering personnel. Duties will include doing regular scheduled and corrective maintenance; helping to move systems between antenna and ground levels, and setting up and shutting down operating systems. Remainder of time will be spent in the construction of specialized receiving and monitoring instrumentation. Graduation from a two-year day technical school or its equivalent and a minimum of two years of applicable experience are required. Individual should be familiar with the use of common hand and machine tools, including lathes and milling machines. Should also have experience with the construction, assembly and wiring of electronic and electrical circuits. The work assignment requires climbing of the antenna tower via protected ladders. Must be able to work with little or no supervision. H85-317

Raquel Welch's yoga book & video routine, bth in br nw cond, book was \$20, tape was \$40, selling both for \$30. Paula, x3-5197.

Hoover Dial-a-Matic w/auto pwr drv, perf cond, like nw, \$150. Call 876-1940.

7' yellow couch w/striper, gd cond, \$100; blk easy chr, \$40; waint end tbls, \$40; mapl effee tbl, \$25; RCA b&w tv, \$20; 5' flr lmp, \$10; orange 26" Royal Traveller suitcase, \$20; Conair air purifier, \$10. Kim, x3-1740 or 242-0804 eves.

DR tbl & chrs, \$150 or bst; K-sz bed, exc cond, \$300 or bst; Canon Super 8 sound cmra w/auto focus, bst offer. Call x3674 Linc or 275-2599 eves & wkends.

Utility trailer, 5x6' bed, xtra lng tongue, old but v gd cond, \$200. Call x7121 Linc or 486-9305.

New Moon futon plus, dbl sz, exc cond w/8 yrs left on warr, \$90. Lisa, 491-0248 or 492-3641.

21" b&w tv, VHF only, \$25; 215 cm x-cntry skis, poles, waxes, \$50. Trevor, x3-8591 or 492-7442.

Nw Delco Freedom II 50 batt, 440 CCA, side trmnls, lists \$54.99, \$20. George, x8-3841 Draper.

Q-sz mtrrss, \$25. Laura, x3-2281 or Fran/Laura, 321-4372 eves.

W's frst-qtry brwn shearing/sheepskn coat, sz 8. Eva, x3-3145.

Overseas containr, 72x69x61", 175 c.f., \$130 or bst. Heinrich, x3-0546 or Isabelle, 661-2051.

BSO tckt for remaindr of Series B seasn, 2pm perfs, 1/10, 1/24, 2/7, 2/28, 3/21, 4/4, 4/18, 1st balcny lft, Sec B-17, \$178.50. Margaret Peterson, 729-3250.

Metl office dsk, exc cond, \$150 or bst; 4-dwr file cabnt, \$45; 2 nw 13" Delta snw trs, \$25; Bauer hcky skts, sz 7, \$15; GE toastr ovn, \$18; Regina elec broom, \$18; Kodak instmtc camra w/flash, \$20; nw bird feedr, \$5; 2 West Bend humidf, 1 nw-\$55, 1 usd-\$35; ski boots, szes 7, 8, 9, 10, cheap, b&w 13" Hitachi tv, nds rpr, \$6. Call x3-3175 or 332-8251.

Canon AE1 camra & 30mm lens, case & blt, askg \$200 or bst. Abdelhaq, x3-8508/1791 or 494-5457 aftr 9pm.

Stdnt dsk, \$15; flouresnt drftng lmp, \$5; step stool, \$3; mesh playpen, fair cond, \$12; baby backpck, \$8; strlr w/awning, \$10; 10-spd girl's bike, some prts missing, \$10; mtl kcthn type cbnt, poor cond, \$3. Roy or Phillis, 576-6965.

2 drsrs, 4 drsrs ea, 4' Hx2' W, \$25 ea; full-sz bed frm w/wden hd & foot brds, \$40. George, x3-4237 or 492-3055.

Upr piano, exc cond, \$500; Sanyo wshr, \$120; Silver-Reed typwrtr, nw, \$150; 10" Panasonic colr tv, \$120.

M's ice skts, sz 10, gd cond, \$15. Call 577-1825.

Br nw, still bxd, 29" sq rosewd effee tbl w/recess base, orig \$459, \$225; wd dsk w/tilt & 3 other drsrs, 45x22 1/2" top, \$75; yellow reclnr, \$60. Cynthia, x3-8982.

Usd ski pkg: Rossignol skis, Salomon bindngs, poles, \$35 nego. Danny, x3-6290 or 566-6188 eves.

Baby seat & carseat, prtbl crib, wh chst of drsrs, vac clnr, colr tv, blk fldng tbl, set of wh dishes, various hshld itms, all v gd qly. Bea, x3-7236 or 923-9522.

Rims for Mercedes mdls 200 to 240, \$20/pr. Patrick, x3-4337.

Epson RX-80 prntr, Kenwood 130W recamp, Marantz tape dck, ea \$100; book - Principles of Computer Design, \$20. Ed, x3-4088 or 661-9838.

36" Caloric gas stv, wh, exc cond, \$60; alum heating ducts for forced hot air heatng sys, will barter; luggage dolly, \$5. Call x3-3656 or 527-5303.

BC vs Ohio State bsktball tkcts, 1/18, Boston Garden, \$12/pr. John, x8-2001 Draper.

Vehicles

'73 Alfa Romeo GTV 2000 red cpe, 29K, like nw, orig owmr, askg \$9,500. Call 358-4698.

'74 Mercury Capri 2000, auto, 1 ownr, AM/FM/cass, dual spkr, \$750 or bst. Call 894-3783.

'75 AMC Hornet, 6 cyl, 60K, exc mtr, gd trs & bdy, \$450. Call x3-5611 or 876-5516.

'76 Volare wgn, v gd cond, 68K, reg & snw trs, \$1,000. Claude, x3-7500 or 646-7190.

'76 Dodge Coronet, 8 cyl, 57K, rns well, auto, ps, AM/FM/cass, nw muff, batt, trs & eng strtr, 2 yr old trnsmsn, \$800 or bst. Hiro, x3-8619 or 527-2043.

'77 Dodge Aspen sta wgn, 6 cyl, auto, a/c, AM/FM, 107K, \$700 or bst. Joe Z, x8-2682 Draper.

'77 VW Rabbit, exc cond, German-md, well-maint, 5-spd, reg gas, ovr 30mpg, AM/FM/cass, \$1,400 or bst. Call x3933 Linc or 861-9680.

'77 Chevy Caprice Classic wgn, V8, wd grain pnls, 70K, a/c, AM/FM, auto, ps, pb, frck, nw batt & exh sys, snw trs, exc cond, \$3,000. Call x3-2509 or 527-7292.

'77 Chevy Chevette, bl, auto, rods, 84K, \$700 or bst. Demetri, x3-7906.

'78 Toyota Corolla, 2-dr, auto, 86K, nw exh sys & brks, gd cond, supr deal, \$1,200. Mary, x3-1772 or 489-3855.

'79 Renault Le Car, 44K, gd cond, rcnt tune-up, AM/FM/cass, some rst, \$900 or bst. Call 265-4853 7-10pm.

'80 VW Rabbit, gas, exc cond bth mech & bdy, 55K, \$2,400. Frank, x8-2437 Draper or 969-3446 eves.

'80 VW Rabbit, diesel, red, 4-dr, 71.2K, v gd cond, \$1,800. Call 494-8331.

'80 Fiat Strada, 5-spd, a/c, AM/FM/cass stereo, alarm sys, Mich rad trs, 53K, exc mech cond, some rst, \$1,300 or bst. Ron, x8-5227 Whitehead or 484-0834.

'80 Datsun 510, 2000cc, 5-dr htchbck, xtra lux mdl, nw exh, brks & trs, 50K, exc cond, AM/FM, auto trans, intrmtn wpr, full feat indctr, side & rear wndw dfrst, Chapman lck, \$4,300 or bst. Afsar, x3-5567 or 623-2998.

Corporation's Wilson dies at 78

(continued from page 1)

and Trust Company, United-Carr Fastener Corporation, The Electronic Trust Limited of London, Reed and Barton Corporation, Controls for Radiation, Inc., Delta Engineering, Inc., and Imtra Corporation. He was an incorporator of Children's Hospital, the Museum of Science, and a trustee of Peter Bent Brigham Hospital. As his children grew, he was a trustee of the Park School, Dexter School, Winsor School and Milton Academy.

His keen interest in paintings and sculpture led him to support the work of an unusual range of artists. He later became an active trustee of the Museum of Fine Arts. He was also an Overseer of the Boston Symphony Orchestra and, with his wife, endowed the John and Dorothy Wilson chair in the First Violins.

For more than 20 years, Mr. Wilson skippered and navigated his K. Aage Nielsen-designed, 42-foot double-ended wooden ketch, *Holger Danske*, weathering Hurricane Brenda on the first transatlantic voyage. In 1980, his son Richard won the Newport-Bermuda Race with *Holger Danske*. Mr. Wilson had cruised extensively in the Baltic Sea, the Mediterranean, the West Coast of Africa, the Caribbean and the eastern coast of the United States.

An enthusiastic figure skater, Mr. Wilson was a former president of the Skating Club of Boston. Other clubs included: Storm Triesail Club, Cruising Club of America, Eastern Yacht Club, of which he was past commodore, New York Yacht Club and Ocean Cruising Club of Wales. He was also a member of The Country Club of Brookline, St. Botolph Club and Union Club.

In 1958, he was elected both as president of the MIT Alumni Association and as a member

of the MIT Corporation, the university's governing body. He was elected to life membership four years later.

In 1959, he became the seventh Secretary of the Corporation and for the next 20 years he hand-signed 45,000 degrees, fully half of all degrees awarded by the Institute from 1961 to 1979. His tenure extended through five MIT Presidents; James R. Killian, Jr., Julius A. Stratton, Howard W. Johnson, Jerome B. Wiesner and Paul E. Gray. At the end of his term he was elected honorary Secretary of the Corporation for life.

From 1960 to 1963 he served as general chairman of MIT's Second Century Fund drive, whose target was \$66 million; the drive raised \$100 million. He also established the John and Dorothy Wilson Professorship, an endowed chair in biochemistry.

He served on many standing and visiting committees and became "Dean of Visiting Committee Chairmen" by serving 17 years as chairman of the Ocean Engineering Visiting Committee.

Mr. Wilson established what MIT Chairman David S. Saxon described as "a unique example of service and devotion to the Institute."

Mr. Wilson is survived by his wife, Dorothy A. (Simpson); three daughters, Eleanor W. Williams of Cambridge, Anne C. Wilson of Cambridge, and Sarah S. Wilson of Chapel Hill, N.C.; a son, Richard B. Wilson of Boston; and four grandchildren.

A funeral service was held Friday, Jan. 3, at the Star of the Sea Church, Marblehead. A memorial service will be held at the MIT Chapel on Thursday, Jan. 16, at 2pm.

Memorial contributions in lieu of flowers may be sent to the John and Dorothy Wilson Fund at Children's Hospital Medical Center, 300 Longwood Avenue, Boston.

Professor Morton Finston dies

Morton Finston of Lexington, a retired professor of aeronautics and astronautics, died of cancer Thursday (January 2) at Massachusetts General Hospital. He was 66.

In the 1950s, Professor Finston did fundamental work in aerodynamics and heat transfer. His special field was viscous fluid flows, which in aerodynamics relate to wake processes, to aircraft drag and to heat transfer.

In the 1950s and 1960s, Dr. Finston also worked with Dr. C. Stark Draper on problems relating to the design of high precision inertial gyroscopes.

Born in Chicago, Professor Finston received a bachelor of science degree from Northwestern University in 1941. He attended Harvard University and the California Institute of Technology before receiving a PhD in applied mathematics from Brown University in 1949.

He served as a research associate at MIT from 1949 to 1951, working in the fields of applied mechanics, fluid mechanics, aerodynamics and heat transfer. Among those he worked with was Professor John R. Markham at the Naval Supersonics Laboratory in Cambridge operated by MIT. Dr. Finston eventually became director of the laboratory, which was later known as the Aerophysics Laboratory.

Dr. Finston served on the MIT faculty in the Department of Aeronautics and Astronautics for 33 years, from 1951 until his retirement in

1984. He was widely known as a teacher, a scholar and as a consultant.

He was an Overseas Fellow at Churchill College, Cambridge University, England, in 1971-72.

Professor Finston leaves his wife, the former Marie Allen; two daughters, Lisa and Nina Finston of Lexington; and a sister, Ruth Melin of Chestnut Hill. Burial will be private.

Francis H. Doyle

Francis H. Doyle, 66, of Quincy, a retired heating and ventilating mechanic at Lincoln Laboratory, died December 16. Mr. Doyle had worked at Lincoln from 1975 until his retirement last year.

He is survived by a widow, Harriet Akerley Doyle; four daughters, Roberta E. Foley and Carol A. Neumann of Quincy, Susan M. O'Malley of Bellingham and Patricia A. Doyle of Maine; two sons, James K. and Stephen H. Doyle of Quincy; a brother and sister and nine grandchildren.

Andrew S. Smith

Andrew S. Smith, 67, of Medford, a retired stock clerk at Lincoln Laboratory, died December 12. Mr. Smith had worked at Lincoln from 1975 until his retirement in 1984.

He leaves a widow, Nellie Scott Smith; a daughter, Andrea Foster of Colorado; two sons, Drew of North Reading and Ralph William Smith of Malden; six brothers and two sisters, and two grandchildren. Memorial contributions may be made to the American Cancer Society.

Roger C. Vokey

Roger C. Vokey, 41, of Westford, a project machinist at Haystack Observatory, died suddenly on December 20. He had worked for MIT since 1972.

He is survived by two daughters, Stephanie and Cynthia, of Billerica; his parents, Martin and Bernadette Vokey of Chelmsford, and a brother, David, who works at Lincoln Laboratory.



CLASSIFIED ADS

Tech Talk ads are intended for personal and private transactions between members of the MIT community and are not available for commercial use. The Tech Talk staff reserves the right to edit ads and to reject those it deems inappropriate. MIT-owned equipment may be disposed of through the Property Office, x3-2776.

INSTRUCTIONS: Ads are limited to one (of approximately 30 words) per person per issue and may not be repeated in successive issues. All must be accompanied by full name and extension. Persons who have no extensions or who wish to list only their home telephones, must come in person to Rm 5-111 to present Institute identification. Ads using extensions may be sent via Institute mail. Ads are not accepted over the telephone.

Deadline is noon Friday before publication.

For Sale

5-pc lined oak BR set: full-sz bkcase hdbd w/mtrrsc & bx sprs, 2 4-dwr chsts, 2 night stands, \$300; waint cedar chst, \$35. Henry, x3733 Linc.

Blizzard racng x-cntry skis, Skilom 3-pin bindngs, waxabl base, 205 cm, gd cond, \$50. P.R. Drouilhet, x7014 Linc or 862-1935.

Hotpoint 24" elec stv, 4 wrkg burnrs & ovn, wll delivr & instll, grt for sm apt kcthns, \$75 or bst. Derrek, x3-6533 or 354-3329.

12" b&w tv, 6 mo old, \$45; Smith Corona 210 elec typwrtr, exc cond, \$125. Call 497-1479 aftr 4:30pm.

M's suits, sz 44 reg; grey pinstripe, \$50; nvy bl, \$25; L's blk slcks, sz 7, \$10; ski jckt, maroon & grey, sz med, \$20; grey cowl swtr, sz 9, \$10. Kim, x3-1740 or 242-0804.

Bttld Coke mach, dispnses clssic 10 oz btls, \$200 or bst. Todd Cass, 266-7273.

10-spd bikes: W's 21" frm, M's 24" frm, \$150 ea; guttr or guttless car frcks, \$15/set; guttr mnt brckts, \$5/set; trailr trs, 4.80-9, 4 hole, \$15 ea; Pinto wgn trailr htch, \$10; wall mnt htr, \$40. Leonard or Diana, 321-3981, 8am-10pm.

Lrg wh tailrd drapes, divide 2 into 4 w/no sewng, bordr of grn, yellw & pink rbbns, bst offer over \$40. Call x3-4380 or 868-5140 to 10:30pm, keep tryng.

Bthrm vanity top, 25" Wx24" D, w/faucts, all usd, gd cond, \$15. John, x4851 Linc or 665-8672 eves.