

Massachusetts
Institute
of Technology

T
TECH TALK
TECH TALK
TECH TALK
TECH TALK

November 18, 1981
Volume 26
Number 15

Three are selected as MacArthur Fellows

Three people at MIT were among the 20 people named late Tuesday as Prize Fellows by the John D. and Catherine T. MacArthur Foundation. Prize Fellows receive substantial "no strings" funding over five years from the three-year-old foundation to work in whatever area they choose.

Michael D. Woodford, 26, a doctoral candidate in economics, will receive \$148,000 over the five-year period.

Richard Mulligan, 27, the postdoctoral fellow at the Center for Cancer Research, will receive \$152,000 over the next five years. He is also a fellow in medicine at the Harvard Medical School.

Raphael C. Lee, 32, who is a surgeon specializing in reconstructive surgery and tissue regeneration at Massachusetts General Hospital in addition to being a research scientist in electrical engineering and computer science at MIT, will receive \$172,000.

Hearing to assess tech manpower needs

The Subcommittee on Science, Research and Technology of the Committee on Science and Technology of the US House of Representatives will hold a congressional hearing on the future of US high technology industry and its manpower requirements in the Little Theatre of Kresge Auditorium on Tuesday, Nov. 24, from 9:05am-noon.

The hearing will be cochaired by Rep. Doug Walgren (D-Pa.) and Rep. Margaret Heckler (R-Mass), chairman and ranking minority member, respectively, of the subcommittee. First witness will be US Secretary of Commerce Malcolm Baldrige. Students and others with MIT ID will be admitted to the hearing promptly at 9am on a first-come basis to the extent that capacity permits.

CU raises dividends but, alas, interest too

In keeping with the ever changing economy, the Board of Directors of the MIT Employees Federal Credit Union recently announced that effective November 1, the dividend rate paid on shares has been increased from seven per cent to 10 per cent per year.

Dividends are computed on the amount of fully paid five-dollar shares compounded monthly. Funds paid in by the tenth of the month earn interest from the first of the month if held for the full month.

The board also announced that, along with the increase of dividends paid, it is necessary to increase the interest charged on loans from 12 per cent to 13.5 per cent per year, effective December 1, 1981.

Holiday schedule set, extra half-day offered

To assist members of the Institute community in making plans for the upcoming holiday season, James J. Culliton, Director of Personnel, has announced the following holiday schedule:

Thanksgiving Day—Thursday, November 26

Christmas Day—Friday, December 25
(The Institute will observe a special holiday closing at 12 noon on Thursday, December 24.)

New Year's Day—Friday, January 1, 1982.

The usual pay practices applying to recognized holidays and special holiday closings will be in effect for employees providing essential services who are required to work on these holidays.

Athletics Center dedication planned

MIT will dedicate its new \$9-million Athletics Center on Friday, Dec. 4. Howard W. Johnson, Chairman of the Corporation, will preside over the ceremonies which start at 3pm in the ice rink located on the first floor of the new facility.

Remarks will be given by MIT President Paul E. Gray; Irene du Pont, Jr., Life Member of the Corporation, and Chairman of the Corporation Visiting Committee for Athletics, and Royce N. Flippin, Jr., MIT Director of Athletics.

Also, Thomas J. Allen, Jr., Professor of Organizational Psychology and Management at the Sloan School, and Chairman, MIT Athletic Board; graduate students Harvey G. Stenger and Mary L. Bowden, members of the men's and women's club hockey teams, respectively; Jeffrey C. Lukas '82, Varsity Club President and co-captain of the cross country, and indoor and outdoor track teams, and Gordon V. Kelly, Associate Professor of Physical Education and Head Coach of Indoor and Outdoor Track.

A reception will follow the dedication at 4pm in the Athletics Center foyer. The MIT Figure Skating Club will present an exhibition at 5pm.

The new 54,000-square-foot facility opened last year and has been a beehive of activity for many segments of the MIT community ever since.

"The first year has shown the building was

a wise decision," Professor Flippin said. "It is constantly being used for varsity events, intramurals, physical education classes, open skating, jogging, and tennis, and even for the

Ball to culminate dedicatory weekend

All members of the community are invited to attend a Ball honoring the academic deans of MIT, including those who have recently ended their terms of service, on Saturday, Dec. 5, at 9pm in Morss Hall or Walker Memorial.

The invitation to the Ball was extended by President Paul E. Gray and Provost Francis E. Low, who said the occasion will recognize the leadership the deans provide in the academic life of the Institute.

The Ball will be the culmination of a busy weekend in which the new dormitory at 500 Memorial Drive and the Athletics Center will be dedicated.

Music for the Ball will be provided by Dick Johnson's Swing Set with vocal soloist. The internationally known band also played last year at Dr. Gray's Inaugural Ball. Refreshments will be served. Formal or festive dress is suggested.

Complimentary tickets to the Ball will be available in the Information Center, Rm 7-121, beginning Monday, Nov. 23.

Day Camp which attracted hundreds of children of MIT employees this past summer.

"The new facility is a tribute to the interest, commitment, and abilities of past and present student leadership, and the vision of MIT leaders in recognizing the importance of athletics, physical education, recreation and physical fitness.

"Those of us at the dedication will respect that legacy and accept the existing challenge of operating this and all of our facilities to fulfill our obligations," Professor Flippin added.

The Athletics Center is also used for other special events such as Technology Day, Open House, the Boston Globe's annual Science Fair, and various academic conferences.

The ice rink has a seating capacity for 1,200 spectators. Locker rooms and coaches' offices are also located on the first floor. The 200-meter, Mondo rubber surface running track on the second floor is only the third of its kind in New England. Seating capacity for track meets is 600.

Former MIT athletic director Ross H. (Jim) Smith played a prominent role in spearheading the drive to fund the new facility in the mid-1970's. Architects Davis, Brody, and Associates of New York City designed the building. Turner Construction was the general contractor for the project.

Faculty to continue discussion on WI

A larger-than-usual attendance of faculty members is expected for today's regular monthly faculty meeting starting at 3:15pm in Huntington Hall (Room 10-250). Guests will be admitted, as space permits, beginning at 3:10pm.

The topic of discussion will be the proposed affiliation between MIT and the Whitehead Institute for Biomedical Research.

President Paul E. Gray and Provost Francis E. Low last week sent a letter to MIT's 1,000-plus faculty members urging their attendance at today's meeting. Letters also have been distributed by two different groups of professors, one group favoring the affiliation and the other opposing it. A separate letter of opposition was distributed by an individual faculty member, Sheldon Penman, professor of biology.

President Gray and Provost Low said in their letter that they strongly support the affiliation. To ensure that the faculty discussion is fully informed, they enclosed with their letter the full text of the proposed affiliation agreement plus a substantive summary on facts about the Whitehead Institute and the proposed affiliation with MIT.

The letter questioning the affiliation with MIT was signed by Anthony French, professor of physics, and John Buchanan, professor of biology, and was endorsed by thirty-one other professors. The letter favoring the affiliation was organized by Institute Professor Salvador Luria and was signed by himself and twenty-three other faculty members.

President Gray said that today's discussion, together with discussions at earlier faculty meetings, will provide him and the

provost with a general sense of faculty opinion. They also have received, and continue to receive, expressions of faculty views through individual conversations.

Based on their understanding of faculty sentiment, the president and the provost will decide whether to recommend that the MIT Corporation, the university's governing body, enter into the affiliation agreement. The Corporation has the legal authority to enter into such a transaction. The Corporation's next regular quarterly meeting will be Friday, Dec. 4.

The executive committee of the Corporation has said that if the president and the provost decide to recommend the affiliation to the Corporation, the executive committee is unanimously prepared to recommend it to the Corporation.

New MacArthur chair is established

MIT has been awarded \$1.2 million from the John D. and Catherine T. MacArthur Foundation for the establishment of a John D. MacArthur Chair.

The announcement from John E. Corbally, president of the Chicago-based Foundation, said that MIT would decide the field or discipline and duration of the Chair.

The institute was one of nine graduate research universities named to receive the \$1.2 million endowments. The Foundation also made awards of \$300,000 each to 16 liberal arts colleges for the establishment of professorships.

The purpose of the endowments is to provide faculty support generally and particularly to help the liberal arts colleges attract young faculty, Mr. Corbally said.

The grant to MIT is to compensate the faculty member holding the Chair and to provide necessary support costs in the college or school in which the Chair is housed.

In writing to the university presidents receiving the \$1.2 million awards, Mr. Corbally said it would be appropriate, if they deem it advisable, to establish the Chair in a given area for a specified number of years, with the thought that it could be assigned to another discipline at some time in the future.

He said the endowments were in recognition "of outstanding reputation and contributions of your university as an institution of distinction in both instruction and research."

The other universities receiving the \$1.2 million each are: University of California, Berkeley; California Institute of Technology;

University of Chicago; Harvard University; University of Illinois; University of Michigan; Northwestern University; and University of Wisconsin.

President Paul E. Gray said he and Provost Francis E. Low will consult with the faculty deans and others before deciding where the Chair is to be established and who will hold it.

He termed the grants to MIT and to the other universities and colleges a significant contribution to the quality of instruction at a time when universities are under severe financial pressures.

"The retention and recruitment of faculty members of the highest calibre is one of the

(continued on page 8)

Catalysts to aid industrial processes

An MIT chemist has discovered catalysts that for the first time make possible systematic control of a class of compounds used in the production of fuels, synthetic fibers, detergents, plastics and many other products.

Dr. Richard R. Schrock, professor of chemistry, says improved control will help the chemical and petroleum industries cut manufacturing costs by permitting more efficient manipulation of raw materials.

Dr. Schrock, reporting on his work to the National Science Foundation, which funded his research, said that the newly developed catalysts make it easier to modify classes of hydrocarbons called olefins and acetylenes. Olefins and acetylenes are raw materials

which chemists alter to produce many products, but because two of their carbon atoms are linked together by more than one chemical bond they are difficult to modify.

Dr. Schrock's catalysts are based on compounds of tungsten, the same material used in incandescent light bulbs. Tungsten compounds have the unusual ability to establish multiple bonds between tungsten atoms and carbon atoms, which has long been known. Dr. Schrock's systematic investigation discovered the usefulness of the compounds as catalysts.

Professor Schrock said that one of the new catalysts contains a tungsten-carbon bond. It "scrambles" the ends of olefin molecules and

produces an entirely different olefin. The other new catalyst contains a tungsten-carbon triple bond. It produces the same kind of scrambling reaction with acetylenic compounds.

The technical name for the scrambling is metathesis reaction. A metathesis reaction of acetylenic compounds was unknown before Dr. Schrock's research. Although scientists have known about the olefin metathesis reaction for many years, their ability to control it in a gentle way has been limited because previous catalysts couldn't be prepared in a systematic way. Dr. Schrock's new catalysts can

(continued on page 3)

INSTITUTE NOTICES

Announcements

Career Planning and Placement Recruitment Presentations—Wed, Nov 18, 7-9pm, Rm 4-159, Fairchild Republic Co.; Tues, Dec 1, 3:30-6pm, Rm 4-149, ICOS Corp.; Thurs, Dec 3, 2-4pm, Rm 4-149, Harvard School of Government.

The CRC's Are In! Bring your receipt to the Undergraduate Physics Office, Rm 4-352. It's not too late to order one if you haven't already done so; bring cash or check—while the supply lasts. We will not repeat this offer until Fall '82. Hurry.

Talbot House Available—The first two weekends in December are still available to any group interested in visiting Talbot House in South Pomfret, Vermont. There are also weekdays available at a less expensive rate. For more information and applications, please contact the Preprofessional Advising Office, 7-102, x3-4158.

CPR Course—A cardiopulmonary resuscitation, basic life saving course is being offered. It is an eight hour course, split over Saturday and Sunday, Nov. 21 and 22, 9-12 noon or 1:30-5:30pm, W20-415.

Official Notice - Drop Date-Fri, Nov 20. Last day to cancel subjects from registration.

November 20 is the drop date. The Registrar's Office would like to remind students that correction cards will not be accepted without all of the necessary signatures. You are urged to obtain all signatures well before deadlines to avoid having to petition the CAP for approval to make a late change. If your advisor is unavailable, contact your undergraduate office or department headquarters. Freshmen should go to the Undergraduate Academic Support Office, Rm 7-103.

Bursar's Office - Student Accounts Procedural Change—Effective December 1, 1981, undergraduate Student Account Representatives Eleanor Smalley and Ann Chick will meet with students who visit the office, in an alphabetical sequence rather than by the present undergraduate class groupings. Ms. Smalley will meet with students whose last names begin with A-K and Ms. Chick, those with L-Z. We hope this change will increase overall office efficiency and provide better continuity in the servicing of undergraduate students. Please feel free to contact Richard Davidson, Assistant Bursar, x3-4133 if you have any questions regarding this change in procedures.

Club Notes

Al-Anon—Meetings are held Fri, 12-1pm, Moore Room 6-321. The only requirement for membership is that there be a problem of alcoholism in a relative or friend. For more info call Ruth, x3-4911.

Appropriate Technology Group—For more information call Scott Miller, x3-1969.

Campus Match Service—will serve as a link between any two students who would like to meet for friendship or for dating. Fee: \$3. Write W20-401 or call 494-5227.

Caribbean Club—Open to MIT-Wellesley community. For more info call Laverne, x3-5961.

Chess Club—Speed chess, bughouse, and analysis for players of all levels. Meets Sat, 1:30pm-6pm, Rm 491, Student Center. Info: Brad, x3-7554 or 494-0263.

Debate Society—Anyone interested in joining the debate team contact Raj Sinha, x5-7287.

Frisbee Club—For info: John Schutkeker, x5-7231 Dorm.

GAMIT—Gays at MIT. Everyone invited, gay, bisexual or straight. Drop by for some free refreshments or just to talk. Every Sun, 5pm, GAMIT Lounge, Rm 50-306 (Walker Memorial).

Hobby Shop—Complete facilities for woodworking, metal working and darkroom, Mon-Fri, 10am-6pm, Wed, 10am-9pm, W31-031. Fee:

\$12/term students; \$20/term community. For info call x3-4343.

MIT Amnesty International (AI)—AI is a worldwide human rights movement which works for the release of any person imprisoned for his or her political or religious beliefs regardless of what those may be, provided violence has not been used or advocated. The AI MIT Group is now working on two country campaigns: People's Republic of China and South Korea and on Hanna Mykhaylenko, a Ukrainian school teacher. All are welcome. For membership info call x5-9623, Dorm or 494-8110.

MIT /DL Bridge Club—ACBL Duplicate bridge, Tues, 6pm, W20-473. Info: Arthur, x8-1414, Draper.

MIT Entrepreneurs' Society—For info regarding membership call Bob Anderson, x5-8952, Dorm or 494-5200. Undergraduates and graduates welcome.

MIT Juggling Club—meeting every Sun, 2-5pm, lobby of Bldg 13, or outside in front of Student Center. Beginners and onlookers welcome. Free.

MIT Rocket Society Club Meeting—First Tuesday of each month, 7pm, International Students' Lounge, Rm 50-220, Walker Memorial.

MIT SARD—Students Against Registration and the Draft. All are welcome. Come for support and information. Meet other non-registrants, veterans and friends.

MIT Soaring Association—For membership info contact Lee Marzke, x5-7380 or Steve Bossolari, x5-8352.

MIT Scuba Club—For membership info and club activities call Mike Hamner, 491-1284.

MIT Wheelmen—A bicycle racing team for the purpose of training and competition. Questions? Call Eric, 225-6674.

Outing Club—Meetings, Mon and Thurs, 5-6pm, Rm 461, Student Center. Like the outdoors? Come share your interests, plan trips, and shoot the breeze. See our bulletin board by the Medical Dept. for current trips and shows.

Overeaters Anonymous—Meetings are held Mon and Thurs, 12-1pm, Conference Room 35-338. For info call x3-2153.

Students for the Exploration and Development of Space (SEDS)—Meeting every second and fourth Wednesday of the month, 7:30pm, Rm 33-206. A film or lecture will be presented. Call Peter for more info at 494-8300.

Shotokan Karate Club—Rigorous training for physical well-being and self-defense. Classes meet Tues, 6-8pm, T-Club Lounge; Thurs, 6-8pm, Dance Studio; Sat, 4-6pm, T-Club Lounge. Info: Frank, 267-5270.

Table Tennis Club—Meets every Mon, 8-10pm, T-Club Lounge, DuPont.

Tae Kwon-Do Club—Korean Martial art involving rigorous training to develop total-body and mind control meetings. Mon, 6-8pm, Dance Studio (DuPont); Wed, 6-8pm, Burton Dining Hall; Fri, 6-8pm, T-Club Lounge and Sun, 4-6pm, T-Club Lounge. Call Hal, x3-6055 or Antony, x5-9504, days.

Tiddlywinks Association—Meetings every Wed, Rm 473, Student Center, 8pm. Interested? Just curious? Everyone is welcome.

Tech Wives Organization—Exercise Class: Conducted by professional, Patricia Murray, Thurs, through Dec. 10, 7:30pm, Exercise Room at Dupont Gym. Single class rate \$2/class for TWO member; \$2.50/class for non-TWO member. For more information contact P. Murray, 494-8761 eve or x3-3351 days.

Women's Ice Hockey Club—Beginners welcome. For more info call Mary Bowden, x3-2272.

Women's Rugby Club—meets for practice Mon and Wed, 5:30-7pm, Briggs Field. All women are welcome, enthusiasm required. Contact Doremy, x5-6451, x5-6446 Dorm. For more information.

Women's Water Polo Club—Fall practices: Sat, 2-4pm, Alumni Pool. A few games scheduled for the fall with the main season starting in March. Any woman who is an undergraduate, graduate or staff member is welcome. No experience needed. For more information call: Karen Fortoul, x3-6799; Karen Klincewicz, 864-7240 or Lisa Freed, x3-6759.

Wu-Tang Chinese Martial Arts Club—classical Chinese martial arts—Northern Praying Mantis, Tai-Chi Chuan and weapons. Beginners welcome. Practice: Varsity Lounge, Dupont, Wed, 6:30-9pm, Sat, 9-11am; Dance Studio, Dupont, Mon, 8-10pm. Info: Howard Ou, 262-3192; Howard Kolodny, 247-8691, Nick Vlannes, x3-4625.

Notice of Meetings
Organizational Meeting of the Society of Connoisseurs and Conservators of Bowed Instruments—Tues, Nov 24, 8pm, Rm 5-232. Call William Pinson, x3-6942, 1-5pm. Please

bring an instrument.

MIT Canadian Club Meeting—Fri, Nov 20, 5:30pm, Chipman Rm 8-314. Election of Club officers and discussion of resume book.

Religious Activities

DA03The Chapel is open for private meditation 7am-11pm daily.

Campus Crusade for Christ—Family Time—a weekly fellowship including music, message and refreshments. Fridays, 7:15pm, Rm 37-252, Marlur Lounge. For more information: Phil Little, x3-2843.

Charismatic Prayer Group—Mon evenings, 6:45, Ashdown Dining Room. Starts with potluck supper followed by prayer meeting with Bible sharing, music and praise. Contact Jim Mahoney, x3-3074.

Christian Science College Organization at MIT—Thursdays, 5:15pm, 6th flr Lounge, Ashdown.

Islamic Society—Every Friday prayers will be held at 1pm, Kresge Auditorium, Rehearsal Room B.

Jewish Religious Services—Shabbat Services, Friday, 5:30pm, Reform/Conservative Services in Hillel basement; Fri, 6pm, Orthodox services at Rm 005 Walker Hall. Sat, Orthodox services, 9am, Bush Room (10-105); Traditional Egalitarian Services, 9:30am, Chapel.

Lincoln Laboratory Noon Bible Studies—Tuesdays and Thursdays, M Trailer. Contact Annie Lescard, X262. **Morning Bible Studies**—Fridays, 7:30-8:30am, L-217. For information contact Ed Bayliss x8289, Linc.

Lutheran Episcopal Ministries—Interdenominational service of Holy Communion, Wednesdays, 5:10pm, MIT Chapel. Supper follows in the basement of 312 Memorial Drive.

Noon Bible Study—Every Thursday, Rm 3-465, bring your lunch, all welcome. Ralph Burgess, x3-8121. (Since 1965)

Prayer Time—Friday afternoons, 1-2pm, weekly Bible Class led by Rev. Miriam R. Eccles, founder and director of the Alpha and Omega Missionary Society. Guest speakers, music and refreshments. Rm 20E-207. Welcome!

Tech Catholic Community—Sunday liturgies: 9am, 12 noon, 5pm, MIT Chapel. Eucharist on weekdays: Tues, 5:05pm, Thurs, 5:05pm and Fri, 12:05 MIT Chapel. Weekly bible study: contact Bob Scheri, x3-2981.

The Church of Christ in Cambridge—Christians from MIT/Harvard/BU...Worship and Discussion Group, 1st and 3rd Sunday evening of the month, 6pm, Rm 37-252, Marlur Lounge. For information call Robert Randolph, X3-4861.

United Christian Fellowship—Large group fellowship meeting: prayer, singing, sharing bible teaching. All are welcome to join. Meets on Friday, 7:30pm, Rm 1-236. For information: Elaine Pope, x5-9566 Dorm Line or x3-6940.

Vedanta Society—Meditation and discourses on the Gita by Swami Sarvagatnanda of the Ramakrishna Vedanta Society of Boston. Fridays, 5:15pm, MIT Chapel.

Graduate Studies

Dissertation Fellowships—Approximately 70 fellowships are available for women who will have completed all course requirements and examinations for the doctorate except the dissertation by January 2, 1982 and whose degree will be received by the end of the fellowship year. Applicants must be citizens of the United States or hold permanent resident status. Period of Award: 12 months beginning July 1, 1982; stipends \$3,500-\$7,000; Deadline: December 15, 1981.

Postdoctoral Fellowships—For postdoctoral research for women who hold the doctorate at the time of application. Applicants must be United States citizens or hold permanent resident status. Funds may not be used for research equipment, publication costs, travel grants, or tuition for further course work. Awards are made for 12 months beginning July 1, 1982; stipends range from \$3,500-\$9,000. Deadline: December 15, 1981.

For American Women in Selected Professions—These fellowships assist women in their final year of professional training in the fields of law, dentistry, medicine, veterinary medicine, and architecture or their final year of a 2-year Master's in Business Administration. (M.B.A. program). Stipends range from \$3,500-\$7,000 for one academic year beginning in September 1982. Deadline: December 15, 1981. (February 1, 1982 for the M.B.A. applicants).

International Fellowships—Approximately 50 fellowships are awarded for one year's graduate study at a United States institution for women who are citizens of countries other than the United States. (Six awards for advanced research in any country other than the Fellow's own for women who are members in their own country of National Associations affiliated with the International Federation of University Women are also available). Stipends to help cover cost of living according to need and place of study average \$2,500-\$9,000. Travel and research costs are not covered. Awards are for one year beginning in September 1982 and are not renewable. Deadline for receipt of applications: December 1, 1981.

For further information on all the above, contact Dean Jeanne Richard at the Graduate School Office, Rm 3-136, x3-4869.

NSF Graduate Fellowships—Preapplication forms are now available for the 1982 National Science Foundation Graduate Fellowship competition. NSF plans to award three-year fellowships for study leading to master's or doctoral degrees in the mathematical, physical, biological, engineering and social sciences, and in the history and philosophy of science. Eligibility for the Fellowships is limited to individuals who are citizens or nationals of the United States at the time of application and who have not completed postbaccalaureate study in excess of 20 semester hours. Prospective applicants must take the GRE on December 12, 1981 if they have not taken the test since October 1979. ETS is accepting applications for the December GRE until December 3 from NSF applicants only. Forms are available in the Graduate School Office, Rm 3-136. NSF application deadline is December 18, 1981.

The Urban Institute—a private, nonprofit policy research organization that investigates social and economic problems of the nation's communities, is announcing its minority fellowship program for doctoral students who are interested in a career in public policy analysis. The student will spend a summer working at the Institute on a project of mutual interest to the student and to the Institute. A modest stipend will be provided to support the student's dissertation research. The program is open to black and Hispanic students who are enrolled in doctoral programs in economics, political science, urban planning, public administration, sociology, or related social science disciplines. Applicants must have completed or expect to complete all course work and qualifying exams before June 1982. Deadline date is Feb. 1, 1982. For more information, please contact Career Planning and Placement Office, Rm 12-170, x3-4737.

UROF

For more information on UROP opportunities, MIT undergraduates should call or visit the Undergraduate Research Opportunities Program Office, Rm 20B-141, X3-5049 unless otherwise specified in the listing. Undergraduates are also urged to check the UROP bulletin boards located in the main corridor of the Institute and in the UROP Office.

Wild Problems of Linear Algebra—Will consider combinatorial aspects of classical problems of linear algebra. Prerequisites: a little knowledge of linear algebra and experience in working on computers. Contact Prof. Victor Kac, 2-178, x3-2945 or secretary, x3-4380.

Turbulence on a Supercomputer—Will involve solution of the partial differential equations describing turbulent fluid flows on the Cray-1 supercomputer. Solid FORTRAN programming experience and 18.01 required. SUITABLE FOR SOME FRESHMEN. PAY AVAILABLE. 10 hrs/wk during term. Contact Prof. S. Orzag, 2-347, x3-4987 or Anthony Patera, 2-366, x3-6598 or Prof. Marcus, 2-337, x3-2487.

DNA Synthesis—This project involves organic synthesis of DNA fragments for biological and physical studies. The student should have background in organic chemistry and some lab experience. Sophomores or Juniors are preferred. CREDIT ONLY. Contact Dr. A. Wang, x3-4710, 16-739 or Prof. Alex Rich, x3-4715, 16-735.

Vitamin A Studies—An upperclassperson is needed to study some of the biochemical functions of vitamin A. The research will require isolation of microsomes from rat liver and a study of the effect of the vitamin on the biosynthesis of oligosaccharides bound to lipids, as catalyzed by the microsomes. Could be taken for credit; arrangements for pay could be negotiated as well. Contact Dr. G. Wolf, 56-213, x3-6781.

Center For Space Research-Low Level X-Ray Detection—Growth of HgI₂ crystals for detection of low x-rays in high atmosphere tests. Will assist in crystal growth, detector fabrication, and testing. Would like someone interested in semiconductors - Crs 3, 6 or 8. FRESHMEN WELCOME, PAY AVAILABLE. Contact Valerie LeMay, dl-7227 or Dr. George Ricker, 37-527, x3-7532.

John Bull's Stocks for Yankee Clocks—Materials Science and Engineering. A student is needed as joint investigator in a collaborative study of the origins of clockmaking materials in colonial America, using the analytical facilities (for the most part non-destructive) in Crs. 3, and drawing on the collection of the Sturbridge Village Museum through its clock curator, Mr. Robert Cheney. CREDIT ONLY. Contact Prof. L.W. Hobbs, 13-4066, x3-6835.

Placement

The following companies will be recruiting in the Career Planning and Placement Office, Rm 12-170, on these dates: November 18, 19, 20, and 23.

November 18: Ampex Corp; The Analysts, Inc.; A Schlumberger Co.; Cartech Inc.; Celanese Corp; EG&G Idaho, Inc.; NASA Lewis Research Center; Revere Copper Products; Jones Graduate School of Administration; OCAAT/Pepsi; Shell Companies Overseas (Recruitment service provided by Scallop Corp.)

November 19: Applicon Inc.; Brunswick Corp; Fairchild Republic Co.; Greenwich Capital Markets, Inc.; Griffiths Air Force Base; Hercules, Inc.; Hughes Aircraft Co.; Intersil; Long Island Lighting Co.; Rexham Corp.

November 20: Alpha Industries, Inc.; Alphatech, Inc.; Intertel, Inc.; Siemens Corp; Steinbrecher Corp; Microwave Semiconductor Corp; National Telecommunications & Information Adm; NUS Corp; Pfizer Inc.; United States Steel Corp; Yankee Atomic Electric Co.

November 23: Argonne National Lab.; AVX Ceramics; General Computer Corp; Microwave Research Corp; Oak Industries Inc.

Internships

Summer Internships

Environmental Intern Program—Dec. 7 deadline; open to juniors and graduate students in all disciplines, involves employment on a project dealing with environmental issues.

Exploration Summer Program—Wellesley College, Nov. 30 deadline; a teaching internship for undergraduates or graduates.

Harvard Medical School—N. Eng. Reg. Primate Center, March 31, 1982 deadline; a research internship for undergraduates.

McDonnell Douglas—St. Louis, MO, Feb. 1, 1982 deadline; for juniors and graduate students with background in engineering and computer sciences.

The Newspaper Fund, Inc.—Minority Program, Nov. 26 deadline; for minority students interested in journalism. For more information on summer internships see Sandy Pierson, Career Planning and Placement Office, 12-170, x3-4735.

Full-Time Internships

Carnegie Endowment for International Peace—Feb. 1, 1982 deadline; for graduating seniors or first or second year graduate students who have a serious interest in foreign policy. See

Patty Joffe, E53-460, x3-3649.

Environmental Intern Program—Dec. 7, 1981 deadline.

Groton School—Jan. 15, 1982 deadline; for recent graduates interested in teaching at a boarding school.

International Development Intern Program—Feb. 15, 1982 deadline; for post-graduates. Implement AID's foreign assistance programs overseas.

Presidential Management Intern Program—Washington, D.C. Dec. 11 deadline; must have graduate degree in management, 2-yr appointment.

Weyerhaeuser Professional Intern Program—Tacoma, WA, Jan. 1982 deadline; for recent engineering graduate interested in forestry products industry.

More Internships—The following organizations are accepting applications for internship from students: The Boston Globe, Rolling Stone Magazine, The C.I.A., Franzheim Synergy Trust, Consumer Energy Council, WXNET-TV 25, and many others. Deadlines are fast approaching. For more information see Sandy Pierson, 12-170, x-4735, Career Planning and Placement Office.

Teaching Assistants Program—Andover Academy, Andover Summer Session. The Andover Summer Session offers up to 40 positions to college seniors and first year graduate students who would like to pursue teaching professions. Teaching assistants assist in teaching a course or courses in their major fields of study; in running a dormitory and in an afternoon activity (mostly athletic). A remuneration of \$1,100 for six weeks, plus room and board is provided. Applications must be postmarked no later than Dec. 15, 1981. Additional information is available from the Preprofessional Advising and Education Office, 7-102, x3-4158.

Teaching Internships—St. Paul's School, Concord, N.H. The Advanced Studies Program offers college level courses to talented New Hampshire high school students, and provides teaching internships to college students who have completed the junior or senior year and who have a major in one of the fields being taught. The internship is primarily for students who consider entering the teaching profession. Each intern will do a substantial amount of teaching, in cooperation with the master teacher. Interns will live in a dormitory, will be responsible for its supervision as well as supervision of the library, and will counsel students in addition to assisting in an afternoon recreational program. Salary is \$900 plus room and board. Deadline, Dec. 1, 1981. Contact Preprofessional Advising Office, Rm 7-102, x3-4158 for further information and applications.

Student Jobs

More jobs are available. Contact Student Employment Office, Rm 5-119.

Off-Campus

Research and Planning, Inc. has an opening for a full-time research assistant. Applicant will be required to work closely with the principal investigator on at least one project. Economics background, good writing ability, and some work experience desired. Salary negotiable. Contact: Dr. Judith Obermayer for an interview, 547-5061.

ASF is now accepting applications for training in Scandinavia for summer 1982 from students in engineering (Finland or Sweden), forestry (Finland or Sweden), agriculture/horticulture (Denmark). Applicants should be at least on sophomore level, majoring in the field for which applying and should have some prior work experience in that field. Knowledge of Scandinavian languages is helpful but not essential. To apply, write to ASF Exchange Division, 127 E. 73 St., New York, NY 10021. Please specify field and country of interest.

We are seeking camp counselors with the following skills: all water sports, team sports, tennis, riflery, archery, golf, music, woodcraft, art, drama, dance, photography, ham radio, arts and crafts. Openings also for nurses, doctors, clerical workers and kitchen help. If you want to reach approximately 75 top camps and serve as counselor during the summer please contact The Association of Independent Camps. Applications are available in the Student Employment Office, Rm 5-119, x3-4973.

On-Campus

Programmer/operator in the Energy Lab Data Acquisition Center (PDP11/60) to aid in computer and system operations. FORTRAN experience and knowledge of RSX11M environment desirable but not required if familiar with interactive operating systems (e.g. VME). Job available through IAP and spring term. At least ten hours a week (flexible), salary depending upon experience. Contact: J. Watts, x3-3596.

Person needed immediately to take care of day-to-day affairs in a small lab, on a part-time or full-time basis (minimum about 30 hrs/wk). Some design and building of experiments will be involved as well as supervision and running of tests with existing apparatus, materials testing machines and data acquisition or experiment control by mini-computer. Applicant should be generally handy, have a proven ability in machining etc., and be able to search out needed items around the Institute and beyond. Both graduate and undergraduate students would be suitable. Very good pay. Please contact Prof. M.P. Cleary, Rm 3-356, x3-2308.

TECH TALK



November 18, 1981
Volume 26
Number 15

Tech Talk is published 39 times a year by the News Office, Massachusetts Institute of Technology. Director: Robert M. Byers; Assistant Directors: Charles H. Ball, Robert C. Di Iorio, Joanne Miller, Tech Talk editor, William T. Struble and Calvin D. Campbell, photojournalist; Reporters: Elizabeth C. Huntington and Caridad Tharan (Institute Calendar, Classified Ads, Institute Notices).

Address news and editorial comment to MIT News Office, Room 5-111, MIT, Cambridge, MA 02139. Telephone (617) 253-2701.

Mail subscriptions are \$15 per year by first class mail. Checks should be made payable to MIT and mailed to Business Manager, Room 5-113, MIT, Cambridge, MA 02139.

Cable Television Schedule

November 18-24

Wednesday, November 18
Channel 8:
12:00-12:30pm MIT IN MOTION - A weekly program about people and life at MIT. We are a video production group at your service, if you or your organization would like to produce a segment for MIT IN MOTION call x7431 or x3635; we will help you realize your ideas.
8:00-9:30pm PHYSICS 8.01 HELPLESSION - Call x7212 and Professor Edwin Taylor will answer your questions.

Thursday, November 19
Channel 8:
2:00-2:30pm MIT IN MOTION - See Wednesday.
2:30-4pm CLASSIC FILM FEATURE - "Summer Light" - Directed by Jean Gremlion. An allegorical treatment of the conflict between good and evil made in German-occupied France.
8:00-9:00pm PHYSICS 8.01 LECTURE - Recorded November 18.
9:00-11:00pm CLASSIC FILM FEATURE - "Summer Light" - See 2:30pm

Sunday, November 22
Channel 8:
8:00-9:00pm PHYSICS 8.01 LECTURE - Recorded November 23.

Echoes

50 Years Ago

In New York's Empire State Building the elevators reach a maximum speed, without passenger discomfort, of 1,000 or more feet per minute. No more need be said to indicate the success achieved by mechanical and electrical engineers in providing swift, utterly reliable, vertical transportation.

40 Years Ago

Vu, Technology's newest publication, will go on sale next week. Sponsored by the Tech, the new magazine is an attempt to portray Institute life pictorially. Articles on Wellesley College, the Field Day Dance, this year's Freshman Camp, views of Technology and the regular feature, "As We Vu It," will be contained in the first issue. An excerpt from one of the articles, "Meet Miss Co-ed," contained the following quote: "Girls do not come to MIT simply to get a college education; they come for specific training. Not that Miss Average Co-ed is necessarily a career girl. She looks forward to a home and family. Women do not come to Tech to get a husband; however, when questioned about this, Miss Co-ed's reply was, 'If I'd wanted to get a man, I'd have gone to Wellesley!'"

25 Years Ago

"Hazing seems to be all right provided there is no personal inconvenience or damage to Any property." —Alar Toomre '57 East Campus house chairman.

"I enjoyed every bit of it. . . " "I made lots of friends among the Sophmores . . . " "We should continue hazing." —Freshmen.

"It's my opinion that the hazing motion is not enforceable. The student government can't maintain order—the muglift is impossible to control. Judcomm feels that a certain amount of hazing is good." —Ed Friedman '57.

"Hazing should be done away with completely." —Tom Thomas '57.

Those were some of the opinions expressed in a debate when Dormcon passed a resolution in favor of a "reasonable" amount of hazing.

ISA is rejuvenated; activities planned

After a year of inactivity, the International Student Association has sprung to life again at MIT with renewed vitality and an expanded mission.

Among its major undertakings will be weekly International culture days during Independent Activities Periods carried out in conjunction with the Foreign Language and Literatures Section of the Department of Humanities. The days will feature food, crafts, art, music and dance from various areas of the world in order to acquaint both Americans and other nationals with the richness of other cultures.

"We want very much to involve the whole community in what we are doing," Joice Himawan, president of the group, said. "We especially want to encourage American students to participate in our activities because they are just as international as foreign students."

Another activity the ISA will sponsor this year is visits by representatives of multinational companies. The representatives will describe the work of their companies and may serve as links to summer or permanent jobs in the home countries of the ISA members.

The next event on the ISA calendar will be a study break at 9pm Sunday, Nov. 22, in the Mezzanine Lounge in the Student Center.

This year there are some 1,750 foreign students, representing 93 countries, attending MIT—more than 18 percent of the student body. Their regional breakdown is as follows: Canada—169; Mexico—49; Central and South America—169; Europe—409; Africa—67; Asia—630; the Near and Middle East—239, and Oceania—18.

Catalysts

(continued from page 1)

be systematically prepared, making more precise control of the metathesis reaction possible, even at temperatures as low as that of dry ice, -78 degrees Centigrade.

The catalysts synthesized in Dr. Schrock's laboratory are the first ones that allow systematic control of metathesis of these types of molecules.

The MIT chemist expects that his discovery will be followed by the creation of a series of catalysts that will enable these types of molecules to be prepared with predefined functions. Dr. Schrock also said that he considers it likely that the principles of olefin metathesis will operate in other important processes such as polymerization of ethylene and propylene.

"This would be of immense value to research scientists and to industry because it would enable researchers and manufacturers to use their raw materials efficiently and precisely, enabling them to reduce costs in the manufacture of many useful products," he said.

Wrighton is appointed to Keyes professorship

Dr. Mark Stephen Wrighton has been named Frederick G. Keyes Professor of Chemistry in the Department of Chemistry. The appointment was announced by Dr. James L. Kinsey, head of the department.

The major research interests of Professor Wrighton, who at 32 is one of the youngest persons to have held a named chair at MIT, are inorganic photochemistry, catalysis, photoelectrochemistry and surface chemistry.

The Keyes professorship was established in 1970 to honor the late Dr. Keyes, an internationally known physical chemist and pioneer in cryogenic research who established MIT as the first center for low-temperature research in the United States and who was head of the MIT Department of Chemistry for nearly a quarter of a century.

The first holder of the chair was Professor John Ross, now at Stanford University. The chair has been vacant for two years.

Dr. Wrighton's research achievements include his discovery of an important new class of photoreactions in which metal-metal bonded complexes undergo symmetrical cleavage with high chemical and quantum efficiencies when photoexcited.

In another area of research, he has used thermally inert, light-sensitive organometallic compounds as catalyst precursors and achieved highly specific catalysis under milder conditions than those found with thermally activated catalysis. And in photoelectrochemistry Dr. Wrighton has pioneered in studying photon assistance of electrochemical reactions. This has led to the discovery of photoanode materials that allow sustained electrolysis of water using light as the only energy input—a major advance in the conversion of solar energy to chemical energy.

Born in Jacksonville, Fla., in 1949, he received the S.B. degree with honors in chemistry from Florida State University in 1969. At Florida State he studied under Professor Jack Saltiel. Upon graduation he received the Monsanto Chemistry Award for outstanding research.

Professor Wrighton did his graduate work at California Institute of Technology under Professors Harry B. Gray and George S. Hammond, receiving the PhD there in 1972. His doctoral dissertation was on "Photoprocesses in Metal Containing Molecules." At Caltech he was named the first recipient of the Herbert Newbury McCoy Award.

Professor Wrighton came to MIT in 1972 as assistant professor of chemistry, was appointed associate professor in 1976 and professor in 1977. He was awarded an Alfred P. Sloan



Department of Chemistry Visiting Committee Chairman Paul M. Cook, '47, president of the Raychem Corp. of Menlo Park, Calif., and Dr. James L. Kinsey, head of the department, seated left and right, were joined by professors who hold chairs at a reception last week for visiting committee members. Standing, from the left, Dr. Mark S. Wrighton, newly-named Frederick G. Keyes Professor of Chemistry; Christopher T. Walsh, professor of chemistry and biology, associate director of Whitaker College and Uncas and Helen Whitaker Professor in the Whitaker College; William R. Roush, Roger and Georges Firmenich Career Development Assistant Professor of Natural Products Chemistry; George H. Buchi, Camille Dreyfus Professor of Chemistry; and Har G. Khorana, Alfred P. Sloan Professor of Biology and Chemistry.

Research Fellowship, 1974-76, and was the recipient of a Dreyfus Teacher-Scholar Grant in 1975-1980. He is the winner of the 1981 American Chemical Society Pure Chemistry Award.

Professor Wrighton has been active in public and professional affairs. He served on the Chemistry Research Evaluation Panel for the Air Force Office of Scientific Research, 1976-1980, as a Titular Member of the IUPAC Commission on Photochemistry, as a member of the American Physical Society Study Group on Solar Photovoltaic Energy Conversion, 1977-1979, and on the National Materials Advisory Board Study on Battery Materials that began in 1979. He is a member of the editorial review board of Solar Energy and has edited two volumes of the American Chemical Society's Advances in Chemistry Series. He is editor for the Physical Electrochemistry Division for the Journal of the Electrochemical Society. He is the coauthor of a

book, entitled *Organometallic Photochemistry*. At MIT he has organized and presented a Chemistry "Magic Show" for the annual Open House.

Professor Wrighton is the author or coauthor of more than 150 articles published in professional and scholarly journals. He has held several visiting lectureships and professorships including the Standard Oil Company of California Visiting Energy Professorship (California Institute of Technology, 1977), Distinguished Faculty Lecturer (University of Texas, Austin, 1977), Stony Brook Lecturer (State University of New York at Stony Brook, 1979), Dreyfus Distinguished Lecturer (Davidson College, 1980), and the Merck Lectureship (Bucknell University, 1980-81).

Professor Wrighton makes his home in Winchester, Mass.

Horn to resign Sea Grant post; search opens for director

Dean A. Horn will resign as director of the MIT Sea Grant Program effective July 1, 1982, and will retire from the Institute on February 1, 1983. Dr. Kenneth A. Smith, associate provost and vice president for research, has announced.

Dr. Smith also announced that Professor Ira Dyer, chairman of the MIT Sea Grant Faculty Committee, will head the search committee to find a successor for Mr. Horn.

Dr. Smith noted that the new Sea Grant director will face an exciting challenge in furthering the contributions of MIT's program to the nation's scientific and technological base in a wide variety of marine contexts. Dr. Dyer and the search committee invite applications and recommendations for director of the MIT Sea Grant College Program.

"We are grateful to Mr. Horn for his leadership of the program," Dr. Smith said. "His unflagging enthusiasm and remarkable organizational skills have helped the MIT Sea Grant Program mount an impressive record of

accomplishment in promoting innovative and responsible marine resource development."

Mr. Horn joined the Sea Grant Program 11 years ago as executive officer under its first director, Dr. Alfred A.H. Keil, now dean emeritus of the School of Engineering, and later under Professor Dyer. Mr. Horn has been director of the program since 1976. Before coming to MIT, Mr. Horn had been a career officer in the US Navy. He is a graduate of the US Naval Academy and holds the SM degree in naval architecture and marine engineering from MIT.

MIT's program has been a leader within the national Sea Grant network, which includes 29 colleges and universities. In recognition of the program's excellence in marine research, education and advisory services, the Institute was named a Sea Grant College in 1976, the first private university so designated.

Formation of the Marine Industry Service Collegium in 1975 broke new ground for Sea Grant advisory services, establishing the first formal communications link with national

marine industries.

Most recently, educational materials developed for pre-university students were the first Sea Grant modules to be validated by a state department of education for use in the public schools. National validation is expected shortly.

Body language show will open in Hayden

Body Language: Figurative Aspects of Recent Art, a two part show by figurative artists, will open Saturday, Nov. 21, at the Hayden Gallery at MIT.

Part I was an exhibition of photographs, drawings, and paintings. Part II will be three-dimensional works by eight artists whose work relates both explicitly and by implication to the human figure.

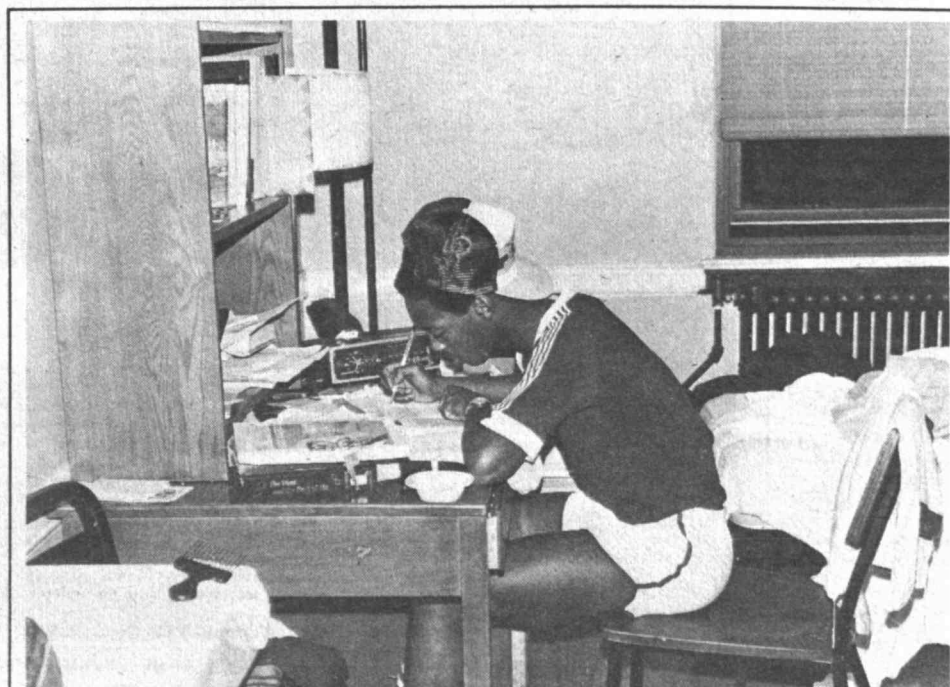
A public preview will be held Friday, Nov. 20, from 5-7pm. Gallery hours are 10am-4pm daily and 6-9pm Wednesday evenings. The exhibition is sponsored by the MIT Committee on the Visual Arts, and guest curator is art critic Roberta Smith.

Works explicitly derived from the human figure will include five cast aluminum wall reliefs by Robert Longo, whose blocky relief figures seem caught in motion; semi-figural solid geometric forms by Joel Shapiro; three witty, anthropomorphic lamps by R. M. Fischer, and works by Jonathan Borofsky who exhibited in a one-man installation in Hayden Gallery last year.

Suggesting rather than deriving from the human figure are an installation by Judy Pfaff in which the viewer becomes part of the work; fragments of architectural features—window sashes, doors—by Siah Armajani, which refer to human use of the objects; free-standing metal sculptures by Barry Ledoux, thin shelled and hollow, that might enclose a human figure; and the furniture-like sculpture of Scott Burton.

This is the first major exhibition for which Ms. Smith has been curator. She chose the works to show the full extent of contemporary representational art and to emphasize the recent shift from self-referential abstract art to a more imagistic orientation.

She has written extensively on contemporary art for such publications as Art in America, The Village Voice, and Artforum, and has published catalogue essays on Joel Shapiro, Brice Marden, Donald Judd, Alex Katz and Peter Campus. A comprehensive catalogue for Body Language Parts I and II, including an essay by Ms. Smith, will be published.



A new publication aimed at interesting black students in applying for admission to MIT is now available from the Admissions Office. The booklet was written by alumnus S. James Gates, Jr., and is illustrated with photographs of black students at MIT like the one above by Clint Wright, a junior in chemical engineering from Silsbee,

Tex. A message from Shirley McBay, dean for student affairs, precedes the text, and the booklet ends with information on student financial aid from Yvonne Gittens, assistant director of Student Financial Aid. To get copies of the booklet, stop by the Admissions Office, Rm 3-108.

THE INSTITUTE CALENDAR X3-3270

November 18 through November 29

MISS THE TECH TALK DEADLINE?

Put your announcement on the MIT Cable System. "Today at the Institute" runs from 9 to 5 daily on Channel 10 and can be viewed in Lobby 7, Lobby 10, and anywhere the cable is connected.

Simply phone X3-7414 and leave your announcement. We prefer a day's warning, but faster action may be possible. Useful also for correcting errors, notifying about cancellations, and dealing with emergencies.

Note: If you have met the Tech Talk deadline, your announcement is automatically put on the cable (except for exhibits and some multimeetings programs).

Events of Special Interest

Must U.S. Aerospace Follow Steel and Autos? Critical Aviation Policy Issues*—Gen. Clifton Von Kann, president, National Aeronautics Association (former vice president, Air Transport Association; retired U.S. army aviation career officer). Flight Transportation Laboratory Seminar, Wednesday, November 18, 2:30-4pm, Rm NW12-222.

What Your ESCA Can Do With an Electron*—Dr. Ashly Taylor, Perkin Elmer Physical Electronics Inc., Eden Prairies, Minnesota. Center for Materials Science and Engineering Special Colloquium, Wednesday, November 18, 3:30-5pm, Rm 4-231.

UNICEF Christmas Cards Sale*—November 19, 20, 23, 24, 25, Lobby 10. All other times the cards are available at the TCA office, W20-450, Student Center.

Seminars and Lectures

Wednesday, November 18

Picosecond Electrical Pulses: Generation and Amplification*—G. Mourou, University of Rochester. Optics and Quantum Electronics Seminar, 11am-12 noon, RLE Conference Room 36-428.

Simulating the Friendly Skies - Airline Network Economic Simulation*—Prof. Antonio Elias, Aeronautics and Astronautics Seminar, 12 noon, Rm 33-206.

Metaphorical Thinking: An Explicit Model for the Process of Conceiving What You Cannot Conceive*—Peter Elbow, Wesleyan University. DSRE Seminar, 12 noon, Rm 20C-117. Sandwiches available at \$1.75 per person.

Relationship Between Surface Current and Wave Modulation: Use for Tomography*—Erik Mollo-Christensen, MIT. Oceanography Sack Lunch Seminar, 12:10pm, Rm 54-915.

Information Costs and the Logic of Group Formation*—Dr. Ulrich O. Mueller, visiting scholar, Center for International Studies, MIT; Free University of Berlin. CIS and MIT Program on Communications Policy Seminar, 12:15-2pm, CIS Seminar Room II (E38-762).

Baroque Military Technology*—Mary Kaldor, Science Policy Research Unit, Sussex University. Program in Science, Technology, and Society Colloquium, 1pm, Rm 20D-205.

Must U.S. Aerospace Follow Steel and Autos? Critical Aviation Policy Issues*—Gen. Clifton Von Kann, president, National Aeronautics Association (former senior vice president, Air Transport Association; retired U.S. army aviation career officer). Flight Transportation Laboratory Seminar, 2:30-4pm, Rm 33-319.

An Analytical Model for Burnable Poison in PWR's*—Wee Tee Loh, Section 2 Reactor Physics, Seminar in Nuclear Engineering, 3pm, Rm NW12-222.

What Your ESCA Can Do With an Electron*—Dr. Ashly Taylor, Perkin Dimer Physical Electronics Inc., Eden Prairies, Minnesota. Center for Materials Science and Engineering Special Colloquium, 3:30-5pm, Rm 4-231. Coffee served.

The Nature of Bipyridine Rhodium (II) and Rh (I) Complexes in Aqueous Solutions*—Dr. Carol Creutz Brookhaven National Laboratory. Inorganic Chemistry Seminar Series, 4pm, Rm 4-370. Coffee and donuts at 3:30pm, Moore Room 6-321.

Computer Molecular Dynamics - A Study of Crack Propagation*—Benito de Celis. CO₂ Lasers Experimental Measurements*—Key Soo Hoo, Nuclear Engineering Doctoral Seminar, 4-5pm, Rm 24-115. Coffee and donuts served at 3:30pm.

From the Physics and Chemistry of Conjugated Polymer Single Crystals to the Technology of Time-Temperature Indicators*—Dr. Ray H. Baughman, Allied Chemical Company. Polymer Seminar Series, 4pm, Rm 66-110. Coffee served at 3:30pm.

Effect of Periodic Testing on the Availability of Stand-By Safety System*—A.A. Bykes; Capacity Expansion Planning with Rescheduleable Load and Storage*—C.H. Wong. Nuclear Engineering Students Seminar, 4pm, Rm NW12-222.

Reentrant Phase Transitions: Why Some Systems Disorder When Temperature is Lowered*—Dr. James S. Walker. MIT Society of Physics Students Colloquium, 4:15pm, Undergraduate Physics Common Room 4-339. Social hour follows.

Extraterrestrial Intelligence*—Prof. Philip Morrison, physics, MIT. Students for the Exploration and Development of Space Seminar, 7:30pm, Rm 9-150.

Acute and Chronic Effects of Opioids on Dorsal-Horn Network Responses in Organotypic Spinal Cord Culture*—Dr. Stanley Crain, Albert Einstein College of Medicine. Program in Neural and Endocrine Regulation Seminar, 4pm, Rm 16-310.

Studies in Fourier Transformation Mass Spectrometry*—Prof. Michael Gross, Dept. of Chemistry and director, Mid-West Center for Mass Spectrometry, University of Nebraska. Special Analytical Chemistry Seminar, 4pm, Rm 4-231.

Synthetic Fuels Processes and Their Thermal Efficiencies*—Prof. Ronald Probst, mechanical engineering, MIT. Thermodynamics Seminar, 4pm, Miller Room 1-114. Coffee at 3:45pm.

Current and Future Prospects for the Estimation of the Earth's Gravity Field*—Dr. Richard H. Rapp, Dept. of Geodetic Science and Surveying, Ohio University. Earth and Planetary Sciences Seminar, 4-5pm, Rm 54-915. Tea at 3pm.

Global Resource Management: Issues and International Policy*—Michael Wallace, postdoctoral fellow, urban studies and planning, MIT. DUSP and Center for International Studies Seminar, 5-7pm, Rm 10-485.

Thursday, November 19

Joint M.I.T.-C.F.A. Neighborhood workshop on Interacting(?) Galaxies or "Things that Go Bump in the Night"—9am-12:15pm, Marlborough Lounge, Rm 37-252. Speakers: F. Schweizer (Carnegie), Observations of Colliding and Merging Galaxies; B. Madore (Toronto), A Southern Atlas of Peculiar Galaxies. Lunch, 12:15pm-1:15pm, Moore Room 6-321. 1:15pm-5:30pm, Marlborough Lounge, Rm 37-252. Speakers: G. Knapp (Princeton), HI Observations of Elliptical Galaxies; R. Ekers (NRAO), Dust Lanes in Elliptical Galaxies; J. Gunn (Princeton), The Origin and Fate of Dust and Gas in

Elliptical Galaxies; R. Sancisi (Groningen and NRAO), Neutral Hydrogen in the Outer Parts of Spiral Galaxies; Panel Discussion to be led by A. Toomre.

Nutrition and Renal Failure*—Robert Lerman, M.D. fellow, clinical nutrition, Boston University Medical Center. Clinical Research Center Seminar, 12:30pm, Rm E17-415.

Changes in Washington—The Effects on Women*—Mary Rowe, Special Assistant to the President at MIT, will speak about recent changes in legislation under the Reagan administration that affect the equality of women such as the demise of Title IX and Title VII. Thursday Afternoon Cheney Program, 4-6pm, Rm 3-310.

Neutron Interferometry: Experiments with Matter Waves*—Anton Zeilinger, visiting associate professor, MIT. Physics Seminar, 4pm, Rm 26-100. Refreshments served at 3:30, Rm 26-110.

Modeling Consumer Switching Behavior*—Prof. J. Morgan Jones, The Graduate School of Management, UCLA; Prof. Dov Pekelman, Tel Aviv University, Israel. Operations Research Center Seminar, 4pm, Rm 24-121.

The Potential Impact of Genetic Engineering on Agriculture*—Prof. Frederick Ausubel, biology, Harvard University. The Technology and Culture Seminar, 4:30pm, Mezzanine Lounge, Student Center.

Bioengineering Approach to Information Processing in Vision*—Joshua Zeevi, visiting professor of aeronautics, MIT. Harvard-MIT Division of Health Sciences & Technology, 4-5pm, Rm 16-134.

Women, Legal Change and the Solidarity Movement in Poland*—Ewa Brantley, lecturer in International Law, Tufts University and PhD candidate, Harvard Law School. **Women and Legal Change in the Middle East***—Judith Tucker, fellow, Institute for Arab Studies; editor, MERIP journal. Joint MIT-Harvard Women in International Development Seminar, 4-6pm, Coolidge Hall, Harvard, 1737 Cambridge St., Rm 3.

Indoor Smoke Pollution: Worse Than Outdoor Smog Alerts?*—Dr. John D. Spengler, Harvard School of Public Health. (A summary of his work and of the Amherst symposium on indoor air contamination), meeting of MIT and Mass GASP, 7:30pm, Miller Room 1-114.

Soviet Satire: Literary Genre or Political Issue?*—Elena Semeka, professor of Russian, MIT. Foreign Languages & Literatures Lecture, 8pm, Rm 14N-225.

Friday, November 20

Joint M.I.T.-C.F.A. Neighborhood Workshop on Interacting(?) Galaxies or "Things that Go Bump in the Night"—Marlar Lounge, Rm 37-252, 9am-4pm. Speakers: S. van den Bergh (DAO, Victoria), Globular Clusters and Galaxy Mergers; P. Morrison (MIT), The Dual Nature of Active Galaxies. Lunch and Panel Discussion. Coffee at 3pm, Rm 37-696.

New Directions in Federal Highway Programs*—Lester Lamm, executive director, U.S. Federal Highways Administration. Center for Transportation Studies Luncheon Seminar Series, 12:45pm-2pm, Mezzanine Lounge, Student Center. Luncheon (optional): 12 noon-12:45pm. Fee: \$2/ students, \$4/ non students.

Lecture by Dr. W. Michael Bowles, Hughes Aircraft. Aeronautics and Astronautics General Seminar, 1pm, Rm 33-206.

Macromolecular Transport in Arterial Walls of Primates*—Ronald G. Tompkins; **Theory of the Behavior of Hydrogen in Metals and Alloys***—Prof. Carol Hall, Princeton University. Chemical Engineering Seminars, 2pm, Rm 66-110.

Stress Rupture in Kevlar Composites*—Dr. F. P. Gerstle, Sandia Labs, Albuquerque, NM. Polymeric Materials Seminar, 2-4pm, Chipman Room 8-314.

Role of Inner Ear in the Vomiting Caused by Certain Emetic Drugs*—Dr. Kenneth Money, Defense and Civil Institute of Environmental Medicine, Canada. Man Vehicle Laboratory, Lab Meeting, 2pm, Rm 37-232.

Fusion Reaction Product Measurements on PLT/PDX*—J. Strachan, Princeton Plasma Physics Laboratory. Plasma Fusion Center Seminar, 3pm, Rm NW14-2209. Refreshments at 2:45pm.

Local Tumor Hypothermia: Science, Technology, and Evaluation*—Prof. Padmakar Lele, experimental medicine, Dept. of Mechanical Engineering, MIT. Mechanical Engineering Seminar, 3pm, Rm 3-133. Coffee at 4pm, Rm 1-114.

Fossil Fuel Use and the CO₂ Problem*—Kamal Araj, graduate student, nuclear engineering. Graduate Seminar in Energy Assessment, 3:30-5pm, Rm 24-110.

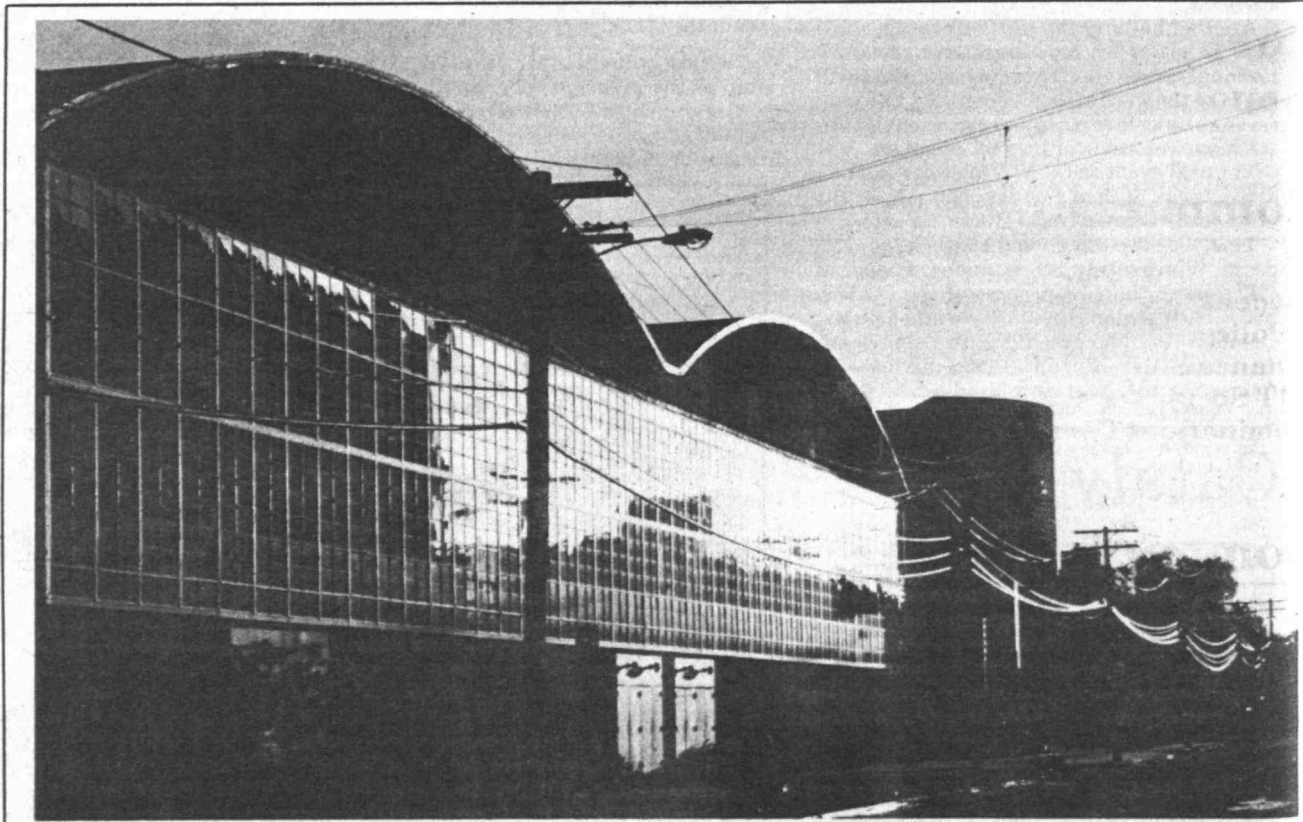
Cataclysmic Variable Stars*—Janet Mattei, director, AAVSO. Observational Astronomy Seminar, 3:30pm, Marlborough Lounge, Rm 37-252. Refreshments at 3pm.

Disappearing Defects*—Prof. Linn Hobbs, materials science and engineering, MIT. Center for Materials Science and Engineering Colloquium, 4pm, Rm 9-150. Coffee served at 3:30pm.

Representationalism*—Prof. Tyler Burge, University of California, Los Angeles. Philosophy Colloquium, 4pm, Rm 37-212.

The Role of the Ocean in the Tropical General Circulation*—Dr. Ed Sarachik, Center for Earth and Planetary Physics, Harvard University. Dept. of Meteorology and Physical Oceanography, Quasi-Biweekly Seminar, 4pm, Rm 54-915. Refreshments will be served following the lecture.

Preference Rule Systems in Vision, Music and Language*—Prof. Ray Jackendoff, Dept. of Linguistics and Cognitive Science, Brandeis University. Dept. of Psychology and Center for Cognitive Science Seminar, 4:30pm, Rm E10-013, 79 Amherst St. Coffee at 4:15pm.



The setting afternoon sun—when it's with us—gilds the utility wires and the Rockwell Cage windows along Vassar Street. —Photo by Calvin Campbell

Saturday, November 21

Perceptions of the West About Islam*—Dr. Mumiaz Ahmad, MIT Islamic Society, 6pm, Rm 9-150. Discussion to follow lecture.

Sunday, November 22

Psychological Implications of the Joseph Story*—Dr. Steven Broder, Boston University, Dept. of Psychology and Counseling, MIT Hillel, 11am, Rm 473,

Student Center, Hillel Brunch Series. Brunch cost is \$2 for Hillel members and \$2.50 for others.

Monday, November 23

Fusion Basics and the Alcator Program*—Ron Parker. Plasma Fusion Seminar, 11:30am; tour of alcator, 12:30pm; coffee, tea and donuts, 11:15am, NW14-2209.

The End of Zionism?*—Prof. Bernard Avishai, humanities, MIT. Center for International Studies Seminar, 12:15-2pm, CIS Seminar Rm II E38-762, 292 Main St., Kendall Sq. Everyone welcome, bring your lunch.

Presynaptic Actions of Opiates on Neurotransmitter Release*—Dr. Lauren Vitek, Loyola University. Program in Neural and Endocrine Regulation Seminar, 4pm, Rm 66-160.

Local SO (8) Invariance in N = 8 Supergravity*—Dr. Bernard de Wit, NIKHEF-H, Amsterdam. The Netherlands Applied Mathematics Colloquium, 4pm, Rm 2-338. Refreshments at 3:30pm, Rm 2-349.

Ultima Llamada: La Libertad de Expresion en Mexico*—Mauricio Gonzalez de la Garza, Mexican novelist and essayist. Foreign Languages and Literatures Seminar. Lecture in Spanish, 3:30pm, Rm 4-159.

NMR Studies of the Conformation, Dynamics, Mispairing, and Interactions in DNA Duplexes in Solution*—Dr. Dinshaw Patel, Bell Laboratories. National Magnet Laboratory Fall Colloquium Series, 4pm, Rm NW14-2209, 170 Albany St. Refreshments at 3:30pm.

Near Bottom Flows on Continental Shelves*—Bill Grant, W.H.O.I. Water Resources and Environmental Engineering Seminar, 4pm, Rm 48-316.

Vibrations of Coupled Gas-Liquid-Structure Systems*—F. Miguel Joos, research assistant, mechanical engineering, MIT. Fluid Mechanics Laboratory Seminar, 4pm, Rm 5-234. Coffee at 3:55pm.

The Hero Myth in Contemporary History (second in series on "The Irrational in History")*—Ralph Buultjens, professor, New School for Social Research. History Section, Dept. of Humanities Seminar, 4-6pm, Rm 14E-304.

Tuesday, November 24

Laser Optical Pumping with Velocity Changing Collisions*—Ramachandra R. Dasari, MIT. Modern Optics and Spectroscopy Seminar, 11am-12 noon, Marlborough Lounge, Rm 37-252. Coffee served at 10:30am.

TFTR Research Plan*—D. Meade, Princeton Plasma Physics Laboratory. Plasma Fusion Center Seminar, 3pm, Rm NW14-2209. Refreshments at 2:45pm.

Japanese Government Policy Toward the Information Industries*—Prof. Julian Gresser, Program in Science, Technology and Society. MIT-Japan Science and Technology Program Series on High Technology and Japanese Industrial Policy, 3-5pm, Center for International Studies Seminar Room II E38-762. Everyone welcome.

Key Structures in Distributed Decision Making*—Prof. Robert R. Tenney, electrical engineering and computer science, MIT. LIDS Symposium, 4pm, Rm 37-212.

Color Vision in Infants*—Prof. Davida Y. Teller, Dept. of Psychology, University of Washington. Dept. of Psychology Colloquium, 4:30pm, Rm E10-013, 79 Amherst St. Coffee at 4:15pm.

The Estimation of an Unknown Function Involved in a Stochastic Process*—Gu Huajin, Northeastern University. Statistics Seminar, 4pm, Rm 2-338. Tea at 3:30pm, Rm 2-349.

T Cell Recognition of Antigen in Vivo*—Dr. Jonathan Sprent, Dept. of Pathology, University of Pennsylvania. Biology Colloquium, 4:30pm, Rm 6-120. Coffee will be served at 4pm in the vestibule of the fifth flr, Bldg. 56.

Mass Loss From Evolved Stars*—Dr. Gilliam Knapp, Princeton University. Special MIT/CFA Joint Astrophysics Colloquium, 4:15pm, Marlborough Lounge, Rm 37-252, Center for Space Research. Coffee at 3:45pm.

Some Aspects of Gas Turbine Engine Post-Stall Behavior*—Dr. R. Mani, Corporate Research Center, General Electric Co. Gas Turbine and Plasma Dynamics Laboratory Seminar, 4:15pm, Rm 31-161.

Poetry Reading*—by Prof. Barry Spacks, humanities, MIT. Writing Program, 5pm, Rm 14E-304.

The Plays of Shakespeare: King Lear*—Prof. A. Kibel, humanities, MIT. Humanities Lecture Series, 7pm, Rm 1-190.

Wednesday, November 25

Results of an Experiment in Teacher Development*—Jeanne Bamberger, associate professor, DSRE, MIT. DSRE Seminar, 12 noon, Rm 20C-117. Sandwiches available at \$1.75 per person.

Lecture by Dr. Thomas Tulip, E.I. DuPont. Inorganic Chemistry Seminar Series, 4pm, Rm 4-370. Coffee and donuts at 3:30pm, Moore Room 6-321.

U.S. Policy Choices for Chemical Warfare*—Prof. Matthew Meselson, biochemistry, Harvard University. Program in Science, Technology, and Society Colloquium, 4pm, Bush Room 10-105.



1981-82 Committees of the Institute

Standing Committees of the Faculty

Committee on Academic Performance
 Committee on Curricula
 Committee on Discipline
 Committee on Educational Policy
 Committee on Faculty-Administration
 Committee on Graduate School Policy
 Committee on Industrial Liaison

Committee on the Library System
 Committee on Nominations
 Committee on Outside Professional Activities
 Committee on Student Affairs
 Committee on Undergraduate Admissions and Financial Aid

Special Faculty Committees

Committee on the Humanities, Arts, and Social Sciences Requirement
 James R. Killian, Jr., Faculty Achievement Award Selection Committee for 1982-83

Committees Appointed by the President (and Reporting to Senior Officers)

Committee on Animal Care
 Committee on Assessment of Biohazards
 Athletic Board
 Committee on the Center for Materials Science and Engineering
 Classification Review Committee
 Commencement Committee
 Community Service Fund Board
 Committee on Copyrights and Patents
 Executive Committee of the Council for the Arts at MIT
 Dining Advisory Board
 Advisory Committee to Educational Video Resources
 Endicott House Board of Governors
 Institute Council on Environmental Health and Safety
 Equal Opportunity Committee
 Faculty Club Advisory Board
 Committee on Foreign Scholarships
 Committee on the Hobby Shop
 IAP Policy Committee
 Standing Committee on the Lincoln Laboratory

MIT Press Editorial Board
 MIT Press Management Board
 Committee on MIT Sea Grant College Program
 MIT-Wellesley Upward Bound Joint Steering Committee
 Medical Administrative Board
 Medical Advisory Board
 Committee on Operations Research
 Committee on Preprofessional Advising and Education
 Prelaw Advisory Council
 Premedical Advisory Council
 Committee on Privacy
 †Committee on Radiation Exposure to Human Subjects
 †Committee on Radiation Protection
 Committee on Radio Astronomy
 †Committee on Reactor Safeguard
 Committee on Research Laboratory of Electronics
 Committee for Review of Space Planning (CRSP)
 ROTC Committee

†Committee on Safety
 Student Activities Development Board
 Technology Broadcasting Corporation
 †Committee on Toxic Chemicals
 Committee for Transportation and Parking
 †Committee on the Use of Humans as Experimental Subjects
 Committee on the Visual Arts
 Wellesley-MIT Joint Committee
 Advisory Committee for Women Students' Interests
 Women's Advisory Board

Ad Hoc Committees

Ad Hoc Committee on MIT and Intelligence Agencies
 Ad Hoc Advisory Committee for the Secondary Technical Education Project
 Advisory Committee on Shareholder Responsibility

Corporation Joint Advisory Committee on Institute-Wide Affairs (Appointed by the Corporation)

Committees of the Undergraduate Association

Student Committee on Educational Policy
 Finance Board
 MIT Social Council Executive Board
 Nominations Committee

Special Projects Committee
 Association of Student Activities
 Executive Committee

Committees of the Graduate Student Council

Committee on Academic Projects and Policy
 Activities Committee
 Committee on Housing and Community Affairs

†Safety Committee

The listings in this supplement reflect information as of November 10, 1981; therefore, several committees do not have full memberships. Appointments of members (including student members) take place continuously throughout the year. Updated information on committees is always available from the Information Center, Room 7-121, Ext. 1475.

Standing Committees of the Faculty

Committee listings are preceded by a brief description of each committee function. The listings include regular members (appointed or elected), ex officio members (see footnotes below), and associate members who are members and/or who perform staff duties in support of the committee work. Student members are identified by undergraduate class numerals or G (Graduate Student status). The dates to the right, in parentheses, indicate the year in which the term of appointment expires. For the formal descriptions of the committee mandate, see *Rules and Regulations of the Faculty*.

Committee on Academic Performance

The Committee is concerned with the academic performance of undergraduates, and may make recommendations to the faculty on such matters as minimum scholastic standards, examinations, and grading. The Committee acts with power on petitions from individual undergraduate students relating to exceptions to established academic standards, and reviews the records of undergraduate students at the conclusion of each regular examination period. The Committee presents to the faculty its recommendations on candidates to be awarded bachelor's degrees.

Judson R. Baron (1982), Chairman
Dean for Student Affairs§
(Designated Representative - Robert M. Randolph)
Registrar§ (Warren D. Wells)
Medical Director§
(Des. Rep. - Peter B. Jenney)
Director of Student Financial Aid§ (Des. Rep. -
Dorothy L. Bowe)
Head, Undergraduate Academic
Support Office§ (Holliday C. Heine)
Marcus Karel (1982)
Alan J. Grodzinsky (1983)
William W. Kaufmann (1983)
Sallie W. Chisholm (1984)
Ann F. Friedlaender (1984)
Vernon M. Ingram**

Staff to the Committee:
E. Jane Dickson

Students:
Sheldon R. Furst, '83
Avery S. Lampert, '82
Jeffrey M. Spivak, '82

Committee on Curricula

This Committee's activities center on the implementation of the General Institute Requirements and course curricula for undergraduates. They include 1) considering proposals for changes in the Institute requirements, and making suitable recommendations to the faculty; 2) acting with power on proposals for Science Distribution and Laboratory subjects; 3) acting with power on requests from individual students for exceptions to the General Institute Requirements; 4) acting with power on proposals for changes in undergraduate subjects of instruction; 5) acting with power on proposals for new curricula and changes in existing curricula; and 6) reviewing reports by departments on individual students' programs which include major departures from an approved curriculum, and summaries of all minor departures.

Barry Zevin (1982), Chairman
Ronald P. Smith, Executive Officer
Registrar§ (Warren D. Wells)
Head, Undergraduate Academic Support Office§
(Holliday C. Heine)
Associate Provost§ (Frank E. Perkins) (Des. Rep. -
Louis Menand III)
Alvin W. Drake (1983)
(sabbatical 1981-82)
Kenneth R. Manning (1984)
William H. Orme-Johnson (1984)
Robert R. Tenney (1984)
Arthur C. Smith**

Students:
Richard R. Blumenfeld, '82
David E. LeBow, '82/Reginald Chen, '82 (alternate)
Ramana Rao, '83
Joshua M. Wurman, '83

Committee on Discipline

This Committee considers cases of alleged misconduct brought to its attention. An accused student is given the opportunity to present himself or herself in person at a meeting of the Committee. If the findings of the Committee include a recommendation that a student be required to withdraw from the Institute, the recommendation with the findings shall be reported to the President for approval or disapproval; otherwise, the Committee is empowered to effect its recommendation.

Louis D. Braida (1982), Chairman
Dean for Student Affairs*
(Des. Rep. - Robert L. Halfman)
Margaret L. A. MacVicar (1982)**
Wit Busza (1983)
Chryssostomos Chryssostomidis (1983)
Annamaria Torriani (1984)
Thomas F. Weiss (1984)

Students:
Albert C. Bashawaty, '84
Nancy B. Greenbaum, '82
Gordon B. Hunter, G
Paul A. Lagace, G
Matthew S. Stern, '82

Committee on Educational Policy

The Faculty Committee on Educational Policy formulates and articulates overall educational policy, sponsors educational experiments, and coordinates much of the faculty's business. CEP representatives are appointed to six other faculty committees. The chairman of the faculty is ex officio chairman of the CEP.

Chairman of the Faculty (Felix M. H. Villars) (1983),
Chairman
Associate Chairman of the Faculty (Harvey M.
Sapolsky) (1983), Deputy Chairman
Provost§ (Francis E. Low)
Vice President§ (Constantine B. Simonides)
Associate Provost§ (Frank E. Perkins)
Glenn A. Berchtold (1982)
Wilbur B. Davenport (1982)
Anthony P. French (1982)
Vernon M. Ingram (1982)
Cynthia G. Wolff (1982)
Lotte Bailyn (1983)
Sylvain Bromberger (1983)
Joseph Ferreira, Jr. (1983)
A. Rae Goodell (1983)
Margaret L. A. MacVicar (1983)
Arthur C. Smith (1983)
J. Kim Vandiver (1983)
David S. Wiley, Secretary

Students:
Robert V. Duncan, '82
Michael G. Nell, G
Therese A. Prisby, G
Lesley P. Saunders, '82
James T. Taylor, '84

Committee on Faculty-Administration

This Committee considers issues involving relationships between Administration and Faculty or other academic staff with teaching responsibilities. The Committee develops ad hoc arrangements to ensure that academic staff not of Faculty rank are adequately represented in discussion and debate of issues with special impact upon their interests.

Faculty:
Edgar H. Schein (1982), Chairman
Amedeo R. Odoni (1982)
James Paradis (1983)
Margaret H. Weiler (1983)
Robert M. Fogelson (1984)
Steven R. Lerman (1984)

Administration:
Robert A. Alberty
Harold J. Hanham
Constantine B. Simonides
Kenneth A. Smith

Committee on Graduate School Policy

Each member of this Committee representing a department or the Whitaker College shall be a member of the Committee on Graduate Students of the departmental or college faculty. The Committee exercises general overview of graduate programs and of students working for advanced degrees. It reports to the faculty recommendations on matters of policy in these areas requiring faculty action. The Committee acts with power on proposals for changes in graduate level subjects of instruction, on requests from graduate students for approval of minor departures from general requirements for advanced degrees, and in evaluating the academic performance of graduate students. The Committee makes recommendations to the faculty for the awarding of advanced degrees.

Dean of the Graduate School* (Kenneth R.
Wadleigh), Chairman
Associate Dean of the Graduate School*
(Jeanne E. Richard), Secretary
Associate Dean of the Graduate School*
(John B. Turner)
Director of Admissions* (Peter H. Richardson)
Dean for Student Affairs*
(Des. Rep. - Robert M. Randolph)
Associate Chairman of the Faculty*
(Harvey M. Sapolsky)
Registrar* (Warren D. Wells)

Hayward R. Alker, Jr.
Nesmith C. Ankeny
Glenn A. Berchtold
Edward H. Bowman
H. Frederick Bowman
Paul E. Brown
A. Douglas Carmichael
Charles C. Counselman
Ernest G. Cravalho
Richard S. Eckaus (fall 1981)
David J. Epstein
Leon B. Groisser
Gary Hack
Morris Halle
Allan F. Henry
Charles D. Hollister
Steven Kleiman
George F. Koster
Francois M. M. Morel
Mary Lou Pardue
Regis M. N. Pelloux
Raymond T. Pierrehumbert (fall 1981)
Mary C. Potter
Ronald G. Prinn (spring 1982)
Warren M. Rohsenow
Jerome Rothenberg (spring 1982)
Anthony J. Sinskey
Harold Y. Wachman
Glenn C. Williams
George Wolf

Students:
Janice J. Goldman, G
Michael P. Nell, G

Committee on Industrial Liaison

The Committee is concerned with the relationship of the activities of the Industrial Liaison Office to the activities of the members of the faculty.

Thomas J. Allen, Jr. (1982), Chairman
Daniel M. Holland (1982)
János M. Beér (1983)
Richard D. Robinson (1983)
Paul L. Penfield, Jr. (1984)
Julian Szekely (1984)

* Ex officio. The names of ex officio members, or their designated representatives (Des. Rep.), are indicated in parentheses next to the listing of the ex officio position in all committees.

** Appointed from the Committee on Educational Policy

***Non-MIT member

§Ex officio non-voting. The names of ex officio members, or their designated representatives (Des. Rep.), are indicated in parentheses next to the listing of the ex officio position in all committees.

‡Appointed by the President

Committee on the Library System

This Committee shall formulate policy for the administration of the Library System consistent with the objectives of the Institute. It shall review budget allocations as prepared by the Director of the Libraries. It shall foster the effective operation of Library Advisory Committees, which shall be appointed for each of the libraries and reading rooms, and shall seek the advice of the Advisory Committees on matters of policy where appropriate.

William M. Siebert (1984), Chairman
Provost* (Des. Rep. - Frank E. Perkins)
Director of Information Processing Services*
(Weston J. Burner)
Director of Libraries* (Jay K. Lucker)
Stephen H. Crandall (1982)
Gary Hack (1983)
Sean C. Solomon (1984)
Joanne Yates (1984)

Associate Members:

Susan J. Cote
Susan E. Woodford

Students:

David E. Langseth, G
Michael E. F. Treacy, G

Committee on Nominations †

This Committee consists of six faculty members appointed by the President. The President designates the chairman from among the membership. The Committee nominates the following officers of the faculty: a chairman, an associate chairman, and a secretary; it also nominates candidates for the elected membership of the Standing Committees. It circulates the list of nominees to all members of the faculty not later than the April meeting of the faculty. The Committee has the power to fill any vacancies that may occur during the year in the offices of chairman, associate chairman, and secretary, and in the elected membership of the Standing Committees.

Mary C. Potter (1983), Chairman
Albert R. Meyer (1982)
Woodie C. Flowers (1983)
Gainer Weiss (1983)
Henry D. Jacoby (1984)
Campbell L. Searle (1984)

Committee on Outside Professional Activities

This committee will inform itself of and report periodically to the faculty on new problems of potential conflicts of interest. It will recommend appropriate modifications of policies and procedures to the faculty.

Gordon M. Kaufman (1983), Chairman
John B. Vander Sande (1982)
Herman N. Eisen (1983)
Robert M. Fano (1984)
Tunney F. Lee (1984)

Committee on Student Affairs

This Committee is concerned with student life and the quality of the learning and living environment at MIT. The Committee is concerned with the range, availability, and effectiveness of Institute-wide support services to students and with the formal and informal relationship between the Institute and the student. The Committee serves as the standing faculty advisory body to the Office of the Dean for Student Affairs.

M. Nafi Toksoz (1983), Chairman
Dean for Student Affairs* (Shirley M. McBay)
Merton J. Kahne (1982)
Arthur P. Mattuck (1982)
William G. Thilly (1982)
Jeanne S. Bamberger (1983)
Ronald M. Latanision (1983)
Charles E. Holt III (1984)
Judah L. Schwartz (1984)
Campbell L. Searle (1984)
A. Rae Goodell**

Students:

Samuel A. Austin III, '82
Malcolm P. Fairbairn, '84
Michelle R. Hunt, '82
Gordon B. Hunter, G
Jean-Marie A. Noterdaeme, G
David J. Scrimshaw, '83

Committee on Undergraduate Admissions and Financial Aid

This Committee is responsible for formulating and reviewing policies on admission of all undergraduate students (including college transfers but not students applying for readmission) and on financial aid to students, including undergraduate scholarships, loans, and student employment. The Committee also exercises prior review of MIT publications and formal releases directed toward the prospective undergraduate student.

Frederick J. McGarry (1983), Chairman
Director of Admissions* (Peter H. Richardson)
Director of Student Financial Aid* (Leonard V. Gallagher)
Head, Undergraduate Academic Support Office*
(Holliday C. Heine)
John J. Donovan (1982)
Hale Van Dorn Bradt (1982)
Travis R. Merritt (1983)
Jane Betts (1984)
Keith D. Stolzenbach (1984)
Harvey M. Sapolsky**

Students:

Benjamin B. Brodey, '83
Sarah A. Tabler, '84

Special Faculty Committees

Committee on the Humanities, Arts, and Social Sciences Requirement

This Committee was established by vote of the faculty in the spring of 1974 and is in general responsible for reviewing all issues of educational policy concerning the Humanities, Arts, and Social Sciences Requirement. In particular it has three major responsibilities: 1) to oversee the selection of Distribution subjects; 2) to review proposals for creating new Fields of Concentration; and 3) to decide which undergraduate subjects shall be eligible for elective credit under the terms of the Requirement.

Robert L. Bishop, Chairman
Suzann Thomas Buckle
Anthony P. French**
Jean E. Jackson
Marvin L. Manheim
Harriet Ritvo
Edward B. Turk
John E. Van Maanen
Janet R. Romaine, Secretary

Students:

Jeffrey A. Fried, '82
Robert J. Spinner, '83

James R. Killian, Jr., Faculty Achievement Award Selection Committee for 1982-83

Each year the Selection Committee chooses one member of the MIT faculty to be the Killian Award Lecturer for the following academic year. The Award was established in the spring of 1971 as a permanent tribute to Dr. James R. Killian, Jr., President of the Institute from 1948 to 1959 and Chairman of the MIT Corporation from 1959 to 1971. The purpose of the Award is to recognize extraordinary professional accomplishments by MIT faculty members and to communicate these accomplishments to members of the MIT community. The recipient of the Killian Award holds the title of Killian Award Lecturer for one academic year and during the course of this year presents one or more lectures to the MIT community on his or her own professional activities. The Selection Committee consists of faculty members elected by vote of the faculty from a slate prepared by the Nominations Committee.

Salvador E. Luria, Chairman
Thomas S. Kuhn
Louis D. Smullin
Phyllis A. Wallace
Victor F. Weisskopf

Committees Appointed by the President

(and Reporting to Senior Officers)

Committee listings are preceded by a brief description of each committee function. The listings include regular members (appointed or elected), ex officio members (see footnotes below), and associate members who are members and/or who perform staff duties in support of the committee work. Student members are identified by undergraduate class numerals or G (Graduate Student status). The dates to the right, in parentheses, indicate the year in which the term of appointment expires.

Committee on Animal-Care

The Committee's purpose is to monitor the provision of proper care and humane treatment to animals used as experimental subjects, and to ensure the protection of human health as it might be affected by animal experimentation.

James G. Fox (1982), Chairman
Veterinary Pathologist* (James C. Murphy)
Herman N. Eisen (1982)
Padmakar P. Lele (1982)
John M. Moses (1982)
Paul M. Newberne (1982)
Melvin H. Rodman (1982)
Paul F. Barrett (1983)
H. Frederick Bowman (1983)
Carol E. Van Aken (1983)
Emilio Bizzi (1984)

Committee on Assessment of Biohazards

The Committee will review investigations involving potential health and safety problems associated with biological research.

Michael A. Marletta, Chairman
James G. Fox
Maurice S. Fox
Martin Leavitt***
Daniel F. Liberman
John M. Moses
Michael P. Paskind
Robert Sweeney***
Annamaria Torriani

Athletic Board

The Athletic Board, composed of faculty members, alumni, students, and ex officio members of the administration, is appointed by the President to advise on matters of policy and procedure related to the Institute's athletic program.

Thomas J. Allen, Jr. (1983), Chairman
Vice President* (Constantine B. Simonides)
Director of Athletics* (Royce N. Flippin, Jr.)
Assistant Director of Athletics* (John G. Barry)
Assistant Director of Athletics* (Jane Betts)
Dean for Student Affairs* (Shirley M. McBay)
(Des. Rep. - Robert M. Randolph)
Assistant Medical Director* (Edward S. Rendall)
Director of Planning* (O. Robert Simha)
Daniel J. Holland, '88 (1982)***
James W. Mar (1982)
Dorothy L. Bowe (1983)
William P. Reynolds, '49 (1983)***
Lisa A. Steiner (1983)
David R. Wilson, '73 (1983)***

Students:

Michael J. Colucci, '82 (Intramural Chairman)
John K. Einhorn, '84 (Undergraduate member at large)
Jeffrey C. Lukas, '82 (Varsity Club President)
Patrick A. Robertson, '83 (MITAA President)
Theresa A. Sutton, '83 (Undergraduate member at large)
Harrison G. Weed, G, (Graduate Student Council Representative)
John B. Weinert, G (MITAA Secretary)

Committee on the Center for Materials Science and Engineering

This Committee advises the director of the Center on matters of policy and reviews past performance.

Mildred S. Dresselhaus, Chairman
Associate Provost and Vice President for Research*
(Kenneth A. Smith)
Richard B. Adler
Robert A. Alberty
Jonathan Allen
William F. Brace
Herman Feshbach
Kent F. Hansen
James L. Kinsey
James W. Mar
Joel Moses
Walter S. Owen
Herbert H. Richardson
Joseph M. Sussman
Neil E. Todreas
James Wei
Gerald L. Wilson
Peter A. Wolff

Classification Review Committee

This Committee was established in 1975 to work in conjunction with a subgroup of the Academic Council in reviewing the Staff Salary Administration Program to assure that equity in salary administration is maintained. This Committee and the subgroup of the Academic Council will serve as an appeal route to any decision made by the Wage and Salary Administrator regarding staff classification.

Weston J. Burner
Susan J. Coté
Keatinge Keays
Nelson C. Lees
Kathryn W. Lombardi
John P. Leonard

Staff Support:
Kerry B. Wilson

Commencement Committee

This Committee, composed of members of the faculty, administration, and student body, has charge of the arrangement and conduct of commencement exercises.

Langley C. Keyes (1983), Chairman
Mary L. Morrissey,* Executive Secretary
Dean for Student Affairs*
(Des. Rep. - Anita T. Walton)
Dorothy L. Bowe*
William J. Hecht*
Henry J. Leonard*
Walter L. Milne*
Constantine B. Simonides*
Warren D. Wells*
John F. Elliott (1982)
John G. Kassakian (1982)
Royce N. Flippin (1983)
Keith D. Stolzenbach (1983)

Students:

Senior Class President* (Charles Frankel)
President, Graduate Student Council* (Nancy E. Wright)
Joyce E. Nachimson, '83

Community Service Fund Board

The Community Service Fund Board provides financial support to charitable organizations in which MIT student/employee/faculty volunteers participate. The Board solicits contributions from all members of MIT and outside sources, and then reviews requests for help from projects utilizing MIT volunteers. The Board consists of representatives from the Corporation, faculty, students, administration, support and service staff, alumni, Technology Wives, the MIT Women's League, and Lincoln Laboratory.

Gregory Smith (1984), Cochairman (Corporation)
Woodie C. Flowers (1984), Cochairman (Faculty)
Carmen N. Besterman, Secretary
Thomas H. Farquhar (1982) (Alumnus)
John N. Goddard (1982) (Union)
Louis Menand III (1982) (Administration)
Lease A. Plimpton (1982) (Lincoln Laboratory)
Peter H. Richardson (1982) (Administration)
Helena Toksoz (1982) (MIT Women's League)
John F. Elliott (1983) (Faculty)
Peter P. Gil (1983) (Faculty)
Anne E. Prince (1983) (Support Staff)
Robert S. Langer (1983) (Faculty)
Joanne Miller (1983) (Administration)
John F. Rutledge (1983) (Exempt Staff)
Bonny S. Kellermann (1984) (Alumna)
Nelson C. Lees (1984) (Administration)

Students:

Arunas A. Chesonis, '84 (Undergraduate Student)
Michael A. Connolly, G
Nancy R. Goldberg, '83 (Alpha Phi Omega Representative)
Thomas A. Lawton, '82 (Inter-Fraternity Conference Representative)
Luu T. Nguyen, G
Asit Sarkar, G

*Ex officio. The names of ex officio members, or their designated representatives (Des. Rep.), are indicated in parentheses next to the listing of the ex officio position in all committees.

***Non-MIT member

Committee on Copyrights and Patents

This Committee recommends to the administration policy guidelines for the processing of patents and copyrights. It also recommends policy for the licensing of such patents and copyrights. It takes the initial step in the determination of ownership of patents and copyrights when applications are submitted by the faculty and staff.

Kenneth A. Smith, Chairman
Arthur A. Smith, Jr.,* Executive Secretary
James D. Bruce*
Stuart H. Cowen*
George H. Dummer*
Daniel E. Dustin*
Robert J. Horn***
Jay K. Lucker*
Robert L. Bishop (1982)
David G. Jansson (1982)
William G. Thilly (1982)
Eric A. von Hippel (1982)
Richard D. Thornton (1983)

Executive Committee of the Council for the Arts at MIT

The Executive Committee presides over the Council's general activities and consists of the chairmen of the Council's committees, Council members and MIT staff appointed by the President, and six representatives elected by the Council at its Annual Meeting.

Jerome B. Wiesner, Chairman
Catherine N. Stratton, Vice Chairman
Luis A. Ferré, Honorary Chairman
Paul Tishman, Honorary Chairman
Vernon R. Alden
Anna Bing Arnold
Lewis P. Cabot
Harold E. Edgerton
Vincent A. Fulmer
Kenneth J. Germeshausen
Ernest A. Grunfeld III
Bartlett Hayes
Roy Lamson
Nelson C. Lees
Vera G. List
James S. Plaut
William L. Porter
Ida Ely Rubin
Gregory Smith
Max Wasserman

Dining Advisory Board

This Board provides a forum for addressing dining-related issues on campus and facilitating a greater degree of dialogue and mutual support between those who provide food services and those who use them. The Board is composed of faculty, students, and staff.

Robert A. Sherwood, Chairman
Doreen Beinart
Dorothy L. Bowe
Harmon E. Brammer
George E. Hartwell
Adrianus J. M. Houtsma
Margaret Keyser
Keith H. Johnson
S. Edward Leonard, Jr.
Anita T. Walton

Students:

Kathryn A. Bindels, '84
Cynthia L. Boulanger, '85
William D. Cattey, '83
Richard A. Cowan, '84
David K. Eisen, '82
Michael J. Glodek, '83
Howard S. Gordon, '84
Glenn J. Kissel, G
Kenneth J. Meltsner, '83
Hazelyn M. Patterson, '83
John F. Pitrelli, '83
Jamshied Sharifi, '83
Sandra D. Thomas, '84

Advisory Committee to Educational Video Resources

This Committee will advise the Provost and the Director of Educational Video Resources on policy matters concerning the use of television in educational programs and in other activities on campus.

Regis M. N. Pelloux (1983), Chairman
Director, Educational Video Resources*
(Edwin F. Taylor)
Albert R. Gurney, Jr. (1982)
Judah L. Schwartz (1982)
Rachel M. Strickland (1982)
Sidney S. Alexander (1983)
John G. King (1983)
Louis Menand III (1983)

Students:

Michael A. Connolly, G
John R. Krooss, '82

Endicott House Board of Governors

The Board of Governors of Endicott House was established in 1955. The duties of the Board include: to set policies that will maximize the use of this conference center, within prescribed bounds; to review and approve the operating budget; and to select and support the management of this facility. The Board also approves capital improvements to the property.

William R. Dickson (1983), Chairman
Allen S. Bufferd (1982)
Eli Shapiro (1982)
Daniel I. C. Wang (1982)
Robert V. Whitman (1982)
Henry W. Fitzpatrick (1983)
Vincent A. Fulmer (1983)
O. Robert Simha (1983)
Gene M. Brown (1984)
John A. Currie (1984)
Peter S. Eagleson (1984)
Hermann A. Haus (1984)

Associate Members:

Bradford M. Endicott
Howard F. Miller

Institute Council on Environmental Health and Safety

This Council is responsible to the President for coordinating the policy development and the assessment of procedures of the several Institute committees concerned with specific areas of environmental health and safety. The Council serves as a forum in which the overlapping and joint areas of concern of these committees are reviewed and clarified and wherein questions in dispute by individual committees will be resolved. The Council is also responsible for identification of those new environmental health and safety matters which may emerge as new activities are undertaken and as new technologies develop or old ones change direction. In instances where such new activities do not fall within the purview of an existing committee, the Council may expand the area of concern of an existing committee or recommend the creation of a new committee.

Robert A. Alberty, Chairman
Richard I. Chamberlin (Industrial Hygiene Officer)
Alan Davison (Chairman, Committee on Radiation Protection)
William R. Dickson (Chairman, Committee on Safety)
James G. Fox (Chairman, Committee on Animal Care)
John M. Fresina (Director of Safety Office)
Bernard S. Gould (Chairman, Committee on the Use of Humans as Experimental Subjects)
Frederick D. Greene III (Chairman, Committee on Toxic Chemicals)
Michael A. Marletta (Chairman, Committee on Assessment of Biohazards)
Willard S. Putnam (Chairman, Committee on Radiation Exposure to Human Subjects)
Norman C. Rasmussen (Chairman, Committee on Reactor Safeguard)
Melvin H. Rodman (Medical Director)
Kimball Valentine, Jr. (Insurance and Legal Administration Officer)

Equal Opportunity Committee

This Committee was established in 1970 to give support, coordination, and direction to the Institute's programs for equal employment and educational opportunity. The Committee advises the President and senior academic and administrative officers on matters pertaining to equal opportunity, reviewing existing programs, and recommending new ones.

Michael S. Feld, Chairman
Equal Opportunity Officer* (Constantine B. Simonides)
Special Assistant to the President* (Mary P. Rowe)
Special Assistant to the President* (Clarence G. Williams)
Thomas A. Barocci
Stephen H. Crandall
Mary Z. Enterline
Herman Feshbach
Henry W. Fitzpatrick
Wesley L. Harris
Willard R. Johnson
Vera Kistiakowsky (sabbatical 1981-82)
Wade M. Kornegay
Tunney F. Lee
Salvador E. Luria

Staff Support:

Isaac M. Colbert

Students:

Frances J. Barg, '82
Bruce G. Johnson, G
Hazelyn M. Patterson, '83
Gregory E. Williams, G

Faculty Club Advisory Board

The Advisory Board shall provide general policy guidance, issue rules and regulations affecting the membership, and facilitate communications between the membership and the management. It shall also be responsible for the adoption of changes to the constitution and bylaws of the MIT Faculty Club by a vote of at least two-thirds of the Board.

Peter S. Eagleson (1982), Chairman
Director of Housing and Food Services* (Harmon E. Brammer)
Director of Finance* (John A. Currie)
John G. Kassakian (1982)
Mary L. Morrissey (1982)
Jerry A. Hausman (1983)
Jack B. Howard (1983)
Dorothy L. Bowe (1984)
Frederick Hodgson (1984)
Charles C. Ladd (1984)

Committee on Foreign Scholarships

This Committee was established in 1964. Its members conduct interviews with applicants for various international scholarships in October and November. The Committee then meets to evaluate and rate the applicants for the Fulbright-Hays Grants; to select two nominees for the Churchill Scholarship; and to nominate one or more principal candidate and alternates for the DAAD Scholarship.

Eugene R. Chamberlain (1984), Chairman
David H. Friedman (1983)
Willard R. Johnson (1983)
Fred Moavenzadeh (1983)
Martin A. Abkowitz (1984)
Keiiti Aki (1984)
Martin Dyck (1984)
Campbell L. Searle (1984)

Students:

Kenneth M. Kalumuck, G
Nancy E. Wright, G

Committee on the Hobby Shop

The Committee encourages and promotes the use of the Hobby Shop by students.

Benjamin L. Averbach, Chairman
Edward A. Crocker
Irving Fischman
Woodie C. Flowers
Robert J. Holden
James D. Litster
Robert D. Logcher

Students:

John J. Kappus, '82
John D. Wendall, G

IAP Policy Committee

This Committee was established by a faculty vote in 1971 to deal with policy matters and the continued evaluation of the Independent Activities Period, and to work closely with the Committee on Educational Policy in reviewing IAP within the context of the total academic program. It reports to the faculty at intervals of not more than four years.

Daniel S. Kemp (1984), Chairman
Louis Menand III*
Edward B. Allen (1983)
Merton J. Kahne (1983)
Henry W. Kendall (1983)
Harvey F. Lodish (1983)
Edward W. Merrill (1983)
David Michael (1983)
Catherine V. Chvany (1984)
Charles L. Cooney (1984)
Shaoul Ezekiel (1984)
Christos Georgakis (1984)
Kenneth L. Hale (1984)
Charles F. Sabel (1984)
David Gordon Wilson (1984)

Staff to the Committee:

Mary Z. Enterline

Student:

Kenneth I. Freedman, '84

Standing Committee on the Lincoln Laboratory

This Committee was first appointed on recommendation of the Ad Hoc Review Panel on Special Laboratories in October 1969. It serves now as an advisory committee to the President and is charged with reviewing the program of the Lincoln Laboratory and recommending policy regarding the relationship between the Laboratory and the teaching and research programs of the Institute.

Arthur K. Kerman (1983), Chairman
James K. Roberge (1982)
Jonathan Allen (1983)
Judson R. Baron (1983)
William W. Kaufmann (1983)
Alan V. Oppenheim (1983)
John S. Waugh (1983)

MIT Press Editorial Board

The members and chairman of the Editorial Board are members of the Institute faculty. The director of the Press, the Vice President to whom the Press reports, and the Director of Libraries are ex officio members; the Board meets every three weeks. The Editorial Board is responsible for the imprint of the Press, and all projects for publication must have its approval. In addition to reviewing publishing proposals, the Editorial Board reviews and participates in the formulation of Press editorial policy and provides guidance and support to the Press Acquisitions Department.

Hartley Rogers, Jr. (December 1981), Chairman
Ascher H. Shapiro (1984, chairman as of January 1982)

Vice President* (Constantine B. Simonides)
Director, MIT Press* (Frank Urbanowski)
Director of Libraries* (Jay K. Lucker)
Sylvain Bromberger (1982)
Leo Marx (1982)
Robert A. Weinberg (1982)
Suzanne D. Berger (1983)
Carl Kaysen (1983)
William L. Porter (1983)
Peter Elias (1984)
Robert L. Jaffe (1984)

MIT Press Management Board

The Management Board was initially established in 1972, to supply guidance on management and fiscal matters. Its role has evolved to that of a Board of Directors of the Press, within the Institute framework. The chairman of the Editorial Board and the director of the Press are ex officio members, and the Management Board is chaired by the Vice President to whom the Press reports. The other Board members are MIT faculty and staff and outside publishers. The Board ordinarily meets twice a year to review Press operations, to receive reports, and to consider strategy and policies for the Press's future.

Vice President* (Constantine B. Simonides),
Chairman
Director, MIT Press* (Frank Urbanowski)
Chairman, MIT Press Editorial Board*
(Hartley Rogers, Jr., December 1981;
Ascher Shapiro, as of January 1982)
Alexander J. Burke, Jr. (1982)***
John M. Deutch (1983)
Ann F. Friedlaender (1983)
Norman Pomerance (1983)***
Alvin J. Silk (1983)
W. Bradford Wiley (1984)***

Committee on the MIT Sea Grant College Program

This Committee provides advice on policy issues, program goals, and program evaluation to the Provost and provides policy guidance and advice on program goals and objectives to the Director.

Ira Dyer, Chairman
Chryssostomos Chryssostomidis§
Dean A. Horn§
Alfred A. H. Keil*
Keith D. Stolzenbach§
Peter S. Eagleson (1982)
J. D. Nyhart (1982) (sabbatical 1981-82)
Anthony J. Sinskey (1982)
David Gordon Wilson (1982)
E. Cary Brown (1983)
Oral Buyukozturk (1983)
Ithiel de Sola Pool (1983)
J. Kim Vandiver (1983)
James M. Utterback (1984)
David N. Wormley (1984)

MIT-Wellesley Upward Bound Joint Steering Committee

This Committee, created in 1969 as a joint MIT and Wellesley College faculty committee, is charged with overseeing the implementation of the Upward Bound Program, a coeducational, multi-racial, multi-ethnic educational program for Cambridge youth of high school age. In this role, the Committee meets regularly to review program performance, and to insure that the program's administration meets Federal Office of Education guidelines and delivers services in a manner consonant with the standards of excellence of both institutions.

MIT

Alan J. Lazarus, Chairman
Ronald Crichlow,* Director, Upward Bound Program
Alan A. Altshuler (first term 1981)
Robert S. Langer, Jr.
Louis Menand III
John P. Terry

Wellesley

Karen Maxwell
Allen S. Schecter

* Ex officio. The names of ex officio members, or their designated representatives (Des. Rep.), are indicated in parentheses next to the listing of the ex officio position in all committees.

***Non-MIT member

§Ex officio non-voting. The names of ex officio members, or their designated representatives (Des. Rep.), are indicated in parentheses next to the listing of the ex officio position in all committees.

Medical Administrative Board

The Medical Administrative Board is the governing body for the Medical Department. The membership is drawn from the MIT Corporation, Administrative Staff, Faculty, and other users of the Department's services.

W. Gerald Austen (1984), Chairman (Corporation)
Medical Director* (Melvin H. Rodman)
Associate Medical Director for Administration*
(Laurence H. Bishoff)
Chairperson of Medical Advisory Board*
(Lisa A. Steiner) (1983) (User)

Corporation:

Gregory Smith (1982)
Norman B. Leventhal (1984)

Administrative Staff:

Stuart H. Cowen (1982)
Shirley M. McBay (1983)
Kenneth R. Wadleigh (1984)

Users:

Harvey M. Sapolsky (1982)
James J. Culliton (1983)

Medical Advisory Board

This Board serves as a communications link between the Medical Department and its users. Its objectives are to keep the MIT community informed of the services available through the Medical Department, and to receive criticisms and suggestions for the modification or addition of services to meet the changing needs of the community. All board meetings are open to the MIT community.

Lisa A. Steiner (1983), Chairperson
Medical Director* (Melvin H. Rodman)
Assistant Medical Director* (Edward S. Rendall)
Associate Director for Administration*
(Laurence H. Bishoff)

Coordinator for Health Information and
Education, and Patient Advocate*
(Constance A. Bean)

Craig M. Baker (1982) (Lincoln Laboratory Exempt)
Maripat J. Corr, '82 (1982) (Undergraduate Student)
Stan N. Finkelstein (1982) (Faculty)
Mary O. Hope (1982) (Student Affairs)
Lois B. Levine (1982) (Administration)
Evelyn Murray-Lenthall (1982) (Lincoln
Laboratory Staff)
Dennis P. Orgill, G (1982) (Graduate Student)
Ruth K. Rosenberg (1982) (Technology Wives
Organization)
Heidi R. Wyle, G (1982) (Graduate Student)
William P. Borge (1983) (Union)
Joan W. Bresnan (1983) (Faculty)
Betty Dyer (1984) (MIT Women's League)
Rosanne Kumins (1984) (MIT Health Plan)
Marjorie S. Lucker (1984) (Women's Advisory Group)
Leslie A. Patton (1984) (Support Staff)
Maria de Marco, Secretary

Committee on Operations Research

The Committee was established in 1953, and is made up of individuals from various academic departments who are either active in operations research or are users of its methodologies. The Committee provides interdepartmental coordination and liaison on matters related to the field, and furnishes guidance for the Operations Research Center.

Richard C. Larson, Cochairman
Jeremy F. Shapiro, Cochairman
Michael Athans (1982)
Alvin W. Drake (1982)
Arnoldo C. Hax (1982)
Gordon M. Kaufman (1982)
Thomas L. Magnanti (1982)
Sanjoy K. Mitter (1982)
Herman Chernoff (1983)
Robert W. Simpson (1983)
Gabriel R. Bitran (1984)
Stephen C. Graves (1984)
John D. C. Little (1984)
Amedeo R. Odoni (1984)
Harilaos N. Psaraftis (1984)

Committee on Preprofessional Advising and Education

Established in 1971, this Committee is composed of members of the faculty, administration, and students. The Committee has three main objectives: to coordinate and extend preprofessional counseling for students; to keep the faculty informed of trends in student interest; and to promote closer ties with the professional schools to which MIT students apply. It is assisted in these pursuits by two subcommittees, the Prelaw Advisory Council and the Premedical Advisory Council.

Alan Hein, Chairman
Jeannette L. Gerzon*
Jeanne S. Bamberger
Eugene R. Chamberlain
Bernard S. Gould
Emma Jackson
Shirley M. McBay
Jeffrey A. Meldman
Louis Menand III
Deborah A. Stone
Robert K. Weatherall

Prelaw Advisory Council

This is a group of advisors specially selected on the basis of professional background and interest in legal education.

Jeffrey A. Meldman (1982), Chairman
Nicholas A. Ashford
Lawrence S. Bacow
Gordon F. Bloom
Drew J. Bottaro
Leonard G. Buckle
Alan Hein
Louis Menand III
Suzann R. Thomas Buckle
Martha W. Weinberg

Students:

Darrell Joseph, '83
Brian W. Pontius, '83
Douglas D. Rohall, '84

Premedical Advisory Council

This is a group of advisors specially selected on the basis of professional background and interests in medicine or medically related areas.

Bernard S. Gould, Chairman
Eugene Bell
Laurence H. Bishoff
John H. Brandt
George Christman
Ernest G. Cravalho
Charles S. Davidson
William M. Deen
Richard M. Douglas
Rochelle R. Friedman
Jeannette L. Gerzon
Mark A. Goldstein
Alan Hein
H. Walter Jones, Jr.
Michael A. Kane
Alfred J. Koumans
Robert S. Langer
Robert S. Lees
Padmakar P. Lele
Robert W. Mann
Borivoje B. Mikic
John M. Moses
Walle J. H. Nauta
Paul M. Newberne
Barbara L. O'Pray
Edward S. Rendall
Adrienne E. Rogers
Margaret S. Ross
William A. Ruth
William M. Siebert
Anthony J. Sinskey
Irwin W. Sizer
Lisa A. Steiner
Jeffrey I. Steinfeld
Felix M. H. Villars
Christopher T. Walsh
Robert K. Weatherall
Michael S. Weidman

Committee on Privacy

This Committee was established in 1971 by vote of the faculty. It examines the policies and procedures of the Institute concerning the collection, security, disclosure, and use of information, including that obtained for administrative purposes or in the course of behavioral research.

Jeffrey A. Meldman (1983), Chairman
Robert G. Gallager (1982)
Myra A. Rodrigues (1982)

Students:

Edward J. Gilbert, G
Jameson Lee, '82

Committee on Radiation Exposure to Human Subjects

The responsibilities of this Committee, established in 1974, are to: 1) review for authorization applications involving ionizing radiation exposure to human subjects for research purposes, insofar as the proposed study applies to radiation exposure; 2) review for approval the procedures that will assure radiopharmaceutical quality of materials for human administration; 3) advise the Committee on the Use of Humans as Experimental Subjects relative to the radiation risk to research subjects; 4) conduct general surveillance of medical use of radiation, for adherence to regulations and license restrictions; and 5) insure compliance with the Nuclear Regulatory Commission (NRC) broad medical license conditions, including periodic reporting to the NRC.

Willard S. Putnam, Chairman
Francis X. Masse, Executive Secretary
Murray M. Bolton, Jr.*
Gail A. Magenis***
Bruce J. Biller
Gordon L. Brownell
Frank P. Castronovo, Jr.***
Charles E. Holt III
Vernon R. Young

Committee on Radiation Protection

This Committee is responsible for the establishment and continuing review of an adequate radiation protection program at the Institute and its off-campus sites. The Committee is also responsible for the Institute's compliance with radiation protection regulations promulgated by state, Federal, and local agencies.

Alan Davison (1982), Chairman
Murray M. Bolton, Jr., Executive Secretary
Reactor Radiation Protection Officer*
(Edward Karaian)
Radiation Protection Officer* (Francis X. Masse)
Assistant Radiation Protection Officer* (Paul Black)
Assistant Radiation Protection Officer*
(Mitchell S. Galanek)
Assistant Radiation Protection Officer*
(James L. Jones)
Rep. of Lincoln Laboratory (Jean L. Ryan)
Rep. of Medical Dept. (To be appointed)
Christian E. Newcomer (Rep. of Division
of Comparative Medicine)
Paul C. Powell (Rep. of Office of Sponsored Programs)
Henri Brunengraber (1983)
John G. King (1983)

Student:
Cynthia D. LuBien, G

Committee on Radio Astronomy

The Committee acts as a vehicle for interdisciplinary discussion on planning for large radio telescopes.

Bernard F. Burke, Chairman
Jonathan Allen
Alan H. Barrett
John V. Evans
Gordon H. Pettengill
Irwin I. Shapiro
David H. Staelin

Committee on Reactor Safeguard

The primary concern of this Committee is with matters of nuclear safety related to the MIT Research Reactor, including the safety of personnel on and off site. The Committee reviews and approves prior to implementation all new operating plans and policies, all significant modifications thereto, and all new experiments involving significant changes in procedure. The Committee verifies that nuclear reactor operation is consistent with MIT policy, rules, approved operating procedures, and license provisions.

Norman C. Rasmussen, Chairman
John A. Bernard (1982), Secretary
Associate Provost and Vice President for Research*
(Kenneth A. Smith)
Physician in Charge of Environmental Medical Service* (William A. Ruth)
Director, Nuclear Reactor Laboratory*
(Otto K. Harling)
Director of Operations, Nuclear Reactor Laboratory*
(Lincoln Clark, Jr.)
Reactor Radiation Protection Officer*
(Edward Karaian)
Radiation Protection Officer*
(Murray M. Bolton, Jr. - Acting)
Director, Safety Office* (John M. Fresina)
Harvey Brooks***
James W. Gosnell***
Samuel Levin***
Constantine J. Maletskos***
David D. Lanning (1982)
Michael J. Driscoll (1983)
Peter Griffith (1984)

Committee on the Research Laboratory of Electronics

The Committee is available for consultation by the Laboratory directors on general questions of policy affecting RLE. Members include representatives of the administration and the heads of departments with major student and faculty participation in the research program.

Jonathan Allen, Chairman
Robert A. Alberty
Ronald C. Davidson
Mildred S. Dresselhaus
Herman Feshbach
Harold J. Hanham
Samuel Keyser
James L. Kinsey
Joel Moses
Norman C. Rasmussen
Kenneth A. Smith
Kenneth R. Wadleigh
Gerald L. Wilson
Peter A. Wolff

Committee for Review of Space Planning (CRSP)

This Committee originates, reviews, evaluates, and/or coordinates all proposals or requests for new space, space reassignments, or requests for major alterations and renovations of existing spaces.

Francis E. Low, Chairman
William R. Dickson, Vice Chairman
Robert B. Cavanaugh, Secretary
Robert A. Alberty
Paul F. Barrett
Stuart H. Cowen
Daniel H. Gould
Harry P. Portnoy
O. Robert Simha
Kenneth A. Smith
Gerald L. Wilson

ROTC Committee

The function of the Committee, which was established in 1970, is to monitor the policy and operations of the office of ROTC Programs and to deal with all matters pertaining to ROTC.

David K. Roylance, Chairman
President* (Paul E. Gray)
Associate Provost* (Frank E. Perkins)
James M. Austin
David V. Burke, Jr.
Joel S. Hetland
Walter M. Hollister
Judith T. Kildow
Daniel T. Langdale
George S. Smith, Jr.

Committee on Safety

This Committee, established in 1962, is responsible for reviewing current practices with regard to general safety, and for formulating and implementing broad safety policies for the Institute. The Committee works closely with the Safety Office.

William R. Dickson (1983), Chairman
Director, Safety Office* (John M. Fresina)
Industrial Hygiene Officer* (Richard I. Chamberlin)
Anthony Colozzi (1982)
Henry W. Fitzpatrick (1982)
James Olivieri (1982)
Melvin H. Rodman (1982)
Kimball Valentine, Jr. (1982)
Stephen D. Immerman (1983)
Jeffrey I. Steinfeld (1983)
John Woodbury (1983)
Paul F. Barrett (1984)
Virginia A. Bishop (1984)
Lawrence M. Lidsky (1984)

Student:
Heidi R. Wyle, G

*Ex officio. The names of ex officio members, or their designated representatives (Des. Rep.), are indicated in parentheses next to the listing of the ex officio position in all committees.

***Non-MIT member

Student Activities Development Board

The Student Activities Development Board, in its present form, was established in 1970 to allocate funds to student and community activities for items of capital equipment and the expense involved in minor space changes. Applications for funds are solicited four times each year, usually in September, November, January, and March.

Jeffrey A. Meldman, Chairman
Robert J. Holden,* Executive Secretary
Dean for Student Affairs* (Des. Rep. - Emily A. Weidman)
Lewis I. Erwin
Adrianus J. H. Houtsma
Richard A. Knight
Kenneth C. Russell
Kimball Valentine, Jr.

Students:
Francesca DeSiervi, G (Graduate Student Council Activities Chairperson)
Kenneth E. Dumas, '83 (Undergraduate Association Vice President)
Lawrence M. Krauss, G (Graduate Student Council member at large)
Lucinda Linde, '82 (Association of Student Activities President)
Luu T. Nguyen, G (Graduate Student Council Treasurer)
Hazelyn M. Patterson, '83 (Undergraduate member at large)
David M. Peereboom, '82 (Finance Board Chairman, Undergraduate Association)
Eric S. Reiner, '83 (Undergraduate member at large)
Nancy E. Wright, G (Graduate Student Council President)

Technology Broadcasting Corporation

Technology Broadcasting Corporation acts as a non-profit trustee for the MIT radio station, WMBR.

Kenneth T. Pogran, President
Paul Green (1983)*** Treasurer
Barry A. Blesser (1982)***
David Facey (1982)***
Todd S. Glickman (1982)***
Thomas J. Kelly (1982)***
Allan R. Kent (1983)
Roy Lamson (1983)
Andrew Lippman (1983)
Morton Berlan (1984)
Robert J. Holden (1984)
John H. Kosian (1984)***
Kimball Valentine, Jr. (1984)
Walter L. Milne, Secretary

Committee on Toxic Chemicals

This Committee is responsible for reviewing current practices with regard to the effects on human beings of toxic chemicals, including carcinogens. The Committee is also responsible for formulating policies necessary to control the risks and exposure to personnel working with such agents, and for compliance with governmental regulations.

Frederick D. Greene II (1984), Chairman
Medical Director* (Melvin H. Rodman)
Director, Safety Office* (John H. Fresina)
Nicholas A. Ashford (1982)
George W. Boylen, Jr. (1982)
James G. Fox (1982)
Arthur G. Foyt (1982)
Adrienne E. Rogers (1982)
John P. Longwell (1983)
Michael A. Marletta (1983)
Uttam Lal RajBhandary (1983)
Ronald G. Prinn (1984)

Students:
Carol A. Handwerker, G
Thomas R. Irvin, G

Committee for Transportation and Parking

This Committee reviews and advises upon policy governing the operation of the parking system at MIT. It further serves to monitor and make recommendations concerning other transportation-related issues which affect the MIT community.

Nigel H. M. Wilson, Chairman
William R. Dickson
James J. Fandel
Ralph A. Gakenheimer
Jean A. Heiney
Robert J. Holden
Tunney F. Lee
James Olivieri
O. Robert Simha
David N. Wormley

Associate Member:
Reynolds W. Thompson

Staff to the Committee:
Marshall V. Cheverie

Committee on the Use of Humans as Experimental Subjects

The Committee is responsible for reviewing every research project utilizing humans as research subjects, and for devising effective procedures to assure the adequate review of all protocols. Its principal role is to determine whether subjects used in any research project are protected against undue risk and to assure that their rights, privileges, and privacy are also protected.

Bernard S. Gould, Chairman
Bruce J. Biller
Henri Brunengraber
Stephan L. Chorover
Thomas B. Duff
Francis X. Masse
Barbara L. O'Pray
Robert M. Randolph
Harry Schwachman***
Daniel Shevitz
Lora H. Tessman
Annamaria Torriani
Kimball Valentine, Jr.
Leonard Wolsky
Mildred Zandition***

Student:
Michael L. Brody, '82

Committee on the Visual Arts

The Committee acts as an advisory body for all aspects of the visual environment and arts at MIT. Its work includes review of and advising on plans for exhibitions at Hayden Gallery, for public lectures, and for major visual arts events; and advising on acquisition policy for MIT and on major acquisitions for the MIT art collection.

Boris Magasanik (1984), Chairman
Provost* (Des. Rep. - Charlene Placido)
Director of Exhibitions, CVA* (Kathy Halbreich)
Campus Architect* (Harry P. Portnoy)
Deputy Director of the Council for the Arts* (Deborah A. Hoover)
Heather N. Lechtman (1983)
Walter A. Rosenblith (1983)
Peter A. Wolff (1983)
David H. Friedman (1984)
Arthur P. Mattuck (1984)
David J. Rose (1984)
Jerome Rothenberg (1984)
Judah L. Schwartz (1984)

Students:
Jeffrey A. Fried, '82
Steven E. Rokita, G
Sandra M. Young, '83

Wellesley-MIT Joint Committee

The Committee monitors and coordinates the Wellesley-MIT Exchange Program to ensure that it constitutes a meaningful diversification in the learning experience of the undergraduates of both schools.

Robert J. Silbey (1984), MIT, Cochairperson
Maud H. Chaplin, Wellesley, Cochairperson

MIT
Mary Z. Enterline*
Louis Menand III*
Frank E. Perkins*
Holliday C. Heine (1982)
Joseph M. Sussman (1982)
Irene Tayler (1982)
John P. Terry (1982)

Students:
Dennis L. Doughty, '84
Helen M. Fray, '82
Brian J. Glass, '82
Michael P. Witt, '84

WELLESLEY
Nannerl O. Keohane*
Jerold S. Auerbach
Theodore Ducas
Robert D. Frye

Students:
Helen M. Morrison, '82
Arlene A. Rozzelle, '82

Adjunct Members:
Barbara Farquhar
Florence C. Ladd
Dorothy B. Moeller

Advisory Committee for Women Students' Interests

This Committee advises the Coordinator for Women Students' Interests in her role as a special resource for graduate and undergraduate women on campus. The Coordinator plans programs, organizes women's groups, and provides support to existing women's organizations. The Committee is composed of graduate and undergraduate students, faculty, and staff.

Mildred S. Dresselhaus (1982), Chairman
Coordinator for Women Students' Interests* (Emily A. Weidman)
Dorothy L. Bowe (1982)
Margery Resnick (1982)
Jeanne E. Richard (1982)
Myra Rodrigues (1982)
Mary P. Rowe (1982)
Linda J. Vaughan (1982)
Diane J. Schweitzer (1983)

Students:
Lori F. Lamel, G
Adrienne Y. Lee, '84
Mary A. Munson, '82
Sarah A. Tabler, '84
Karen E. Wieckert, G

Women's Advisory Board

This advisory Committee is representative of many women at MIT. Its members are elected from various constituencies and from various areas of the Institute. The Committee works with and advises the Special Assistant to the President on areas of concern to the constituent groups and serves as a communications link with her office. Members of the committee are appointed for one-year terms, and the Chair rotates.

Mary P. Rowe* (Special Assistant to the President)
Marguerite E. Ampolo (Lincoln Laboratory Support Personnel)
Isabelle E. Barclay (Women's Forum)
Gladys Barron (Working Group on Support Staff Issues)
Anne G. Berg (MIT Women's League)
Dorothy L. Bowe (MIT Women)
Barbara Peacock Coady (Working Group on Support Staff Issues)
Margaret T. Coleman (Association of MIT Alumnae)
Jahde Collins (Lincoln Laboratory Support Staff)
Cynthia K. French (Postdoctoral Women)
Mary O. Hope (Minority Women)
Roberta C. Hoxie (Technology Wives Association)
Judith T. Kildow (Women Faculty)
Sandra C. Kobayashi (Association for Women Students)
Laura G. Lawrence (Information Processing Services)
Marjorie S. Lucker (Women Administrative Officers)
Patricia R. Murray (Technology Wives Association)
Jeanne E. Richard (Women's Forum)
Myra Rodrigues (Wives Group)
Charlotte N. Schell (Lincoln Laboratory Women's Forum)
Theresa A. Webster (Postdoctoral Women)
Emily H. Weidman (Coordinator for Women Students' Interests, DSA)
Shelley B. Weinstock (Women Graduate Students)

Ad Hoc Committees

Ad Hoc Committee on MIT and Intelligence Agencies

The Ad Hoc Committee on MIT and Intelligence Agencies will consider and develop recommendations for policies and procedures pertaining to potential involvement of MIT and members of the MIT community with intelligence agencies.

Kenneth M. Hoffman, Chairman
Louis Menand III*
Ascher H. Shapiro
Phyllis A. Wallace
Myron Weiner

Ad Hoc Advisory Committee for the Secondary Technical Education Project

The Committee is composed of members of the faculty and administrative staff. Its task is to act in an advisory capacity to the Director of the Secondary Technical Education Project who will coordinate MIT's collaboration with the Boston School System in developing the Mario Umana Harbor School of Science and Technology into a city-wide, magnet, technical school as described in the Phase II Desegregation Order of Federal Judge W. Arthur Garrity on May 10, 1975.

Barbara S. Nelson, Chairperson
Director, Secondary Technical Education Project*
(Robert C. Hayden)
Harold Abelson
Alan A. Altshuler
Dorothy L. Bowe
Louis L. Bucciarelli
Phillip Clay
Marcia E. Conroy
Ronald Crichlow
Ira Dyer
Morton Finston
Jonathan A. King
Walter L. Milne
Marshall J. Milner
K. Nagaraja Rao
Benson R. Snyder
Judah L. Schwartz
Myron Tribus
Bruce D. Wedlock
Clarence G. Williams

Advisory Committee on Shareholder Responsibility

The Advisory Committee on Shareholder Responsibility serves to advise the executive committee of the MIT Corporation on matters concerned with MIT's votes and other actions as a socially responsible owner of stocks in businesses and industries.

D. Reid Weedon, Jr.,*** Chairman
Treasurer* (Glenn P. Strehle)
William R. Dickson
Allan F. Henry
Robert M. Solow
C. Vincent Vappi***
Walter L. Milne, Secretary

Students:
Irmgard Behlau, '82
Michael A. Connolly, G

Special Committee Appointed by the Corporation

Corporation Joint Advisory Committee on Institute-Wide Affairs (CJAC)

CJAC was established in March 1969 by vote of the Corporation as a new special committee of the Corporation. Its purpose is to associate with the Corporation a broadly representative group at the Institute to which the Corporation can turn for consideration and advice on special Institute-wide matters requiring Corporation attention, such as the long-range planning of MIT's campus, the improvement of the institutional environment, and MIT's relations with Cambridge and metropolitan Boston. CJAC provides an additional means for bringing representatives of the student body, both graduate and undergraduate, and of the faculty into regular communication with the Corporation on matters of long-range importance to the entire Institute community. CJAC also serves to acquaint the MIT community more fully with the role and work of the Corporation, but it does not in any way modify the role of existing Corporation Visiting Committees.

Claude W. Brenner, Chairman (Corporation)
President, Alumni Association* (Angus N. MacDonald)
Chairman of the Faculty* (Felix M. H. Villars)
President, Graduate Student Council*
(Nancy E. Wright)
President, Undergraduate Association*
(John E. DeRubeis)
Judith Bostock (1982) (Faculty)
Fernando J. Corbató (1982) (Faculty)
Paul A. Lagace (1982) (Graduate Student)
Michael P. Nell (1982) (Graduate Student)
Gregory Smith (1982) (Corporation)
Andrew J. Washburn, '82 (1982)
(Undergraduate Student)
Harl P. Aldrich, Jr. (1983) (Corporation)
Edward H. Bowman (1983) (Faculty)
Paulette Coleman (1983) (Corporation)
Ramana Rao (1983) (Undergraduate Student)
Iris E. Lazarus, Secretary

*Ex officio. The names of ex officio members, or their designated representatives (Des. Rep.), are indicated in parentheses next to the listing of the ex officio position in all committees.

***Non-MIT member

Committees of the Undergraduate Association

Student Committee on Educational Policy

The Student Committee on Educational Policy (SCEP) is a forum for discussing educational questions which may serve as background for the student members of the Faculty Committee on Educational Policy. The Chairman of SCEP has a seat on the Faculty CEP and may speak at Faculty Meetings. SCEP attempts to handle educational complaints, conducts surveys on educational questions, publishes the *Course Evaluation Guide*, and develops, coordinates, and supports projects which attempt to improve educational life at MIT.

Names unavailable at press time.

Finance Board of the Undergraduate Association

The Finance Board is in charge of allocating funds to student activities and acting as management consultants to student activities on major projects and overall financial responsibility. The Board elects a Chairman and a Vice Chairman and has five permanent members and five representatives from other parts of student government. The Board may also elect associate, nonvoting members.

David M. Peereboom, '82, Chairman
Robert J. Weller, '82, Vice Chairman
Charles P. Brown, '84
Ricki Chen, '83
Kenneth E. Dumas, '83*
Stephen W. Earl, '83
Steven G. Llorente, '84
Christian MacKenzie, '82
Honoru Masamune, '82
Raymond E. Samuel, '84
Dirk Taylor, '82
Susanne E. Zimmermann, '82

MIT Social Council Executive Board

The MIT Social Council was created within the Office of the Undergraduate Association President to select, plan, fund, and coordinate social activities which benefit undergraduate students. Each living group's social chairman is a member of the full Social Council. The Executive Board makes funding decisions and coordinates social events on a day-to-day basis. The Chairman is appointed by and reports to the Undergraduate Association President.

Names unavailable at press time.

Nominations Committee of the Undergraduate Association

This committee is responsible for the nomination of students to Institute Committees. The Nominations Committee reviews students' performance, conducts interviews for student positions on committees, and keeps committee records and student representative reports.

Gerald L. Fitzgerald, '82, Chairman
Richard R. Babboni, '83
Arthur P. Vasen, '83
Alan J. Wilson, '82
Charlene Yie, '82

Special Projects Committee

The Special Projects Committee, appointed by the Undergraduate Association President, coordinates the short-term special-purpose projects undertaken by the Undergraduate Association. The Committee also provides the resources, staffing, and guidance to assist start-up projects in developing into full-fledged organizations.

Names unavailable at press time.

Association of Student Activities Executive Committee

The Association of Student Activities (ASA) Executive Committee is elected by the full ASA, in which each recognized activity has one vote. The Executive Committee is responsible for allocating bulletin board and office space among activities, mediating disputes, and running the Activities Midway.

Names unavailable at press time.

Other Undergraduate Association Committees include the Student Center Committee, the Student Information Processing Board, and the class government executive committees.

Committees of the Graduate Student Council

Committee on Academic Projects and Policy

This Committee coordinates graduate student activity on academic matters, including: financial aid, advising, student grievance procedures, course evaluation, quality of teaching, teaching awards, and student involvement in departmental governance.

Names unavailable at press time.

Activities Committee of the Graduate Student Council

This Committee is concerned with the advocacy, financing, and recognition of graduate student activities. Its responsibilities include planning and financial support for social, cultural, and educational programs and events for graduate students.

Francesca DeSiervi, Chairman
Edward L. Horton
Steven H. Izen
Kenneth D. Jacobs
Annette K. Larsen
Anu T. Nguyen
Mark A. Plotnick
Robin M. Vaughan

Committee on Housing and Community Affairs

This Committee is concerned with housing, community affairs, student welfare, athletics, orientation, and related matters. It handles relations with Institute officials, plans for the orientation of new graduate students, coordinates activities among living groups, plans activities, and makes recommendations for funding.

Lori F. Lamel, Chairperson
Michael L. Broide
Steven H. Izen
Renee E. Marlin
Jean-Marie A. Noterdaeme
Brian J. Zelinski

West Lounge, Student Center. Babysitting provided for both infants and children in Rm 473, Student Center. All women in the MIT community welcome.

Faculty Club**—The Club is open Monday through Friday. Luncheon hours: 12-2pm; Dinner hours: 5:30-8pm.

Alcohol Support Group**—Personal Assistance Program, Medical Dept. A self-help support group for persons concerned about the effects of excessive alcohol use on their lives. For place, time and day of the week, contact Ron Fleming, x3-4911.

Writers Anonymous**—Meetings are held Mondays and Thursdays, 12-1pm, Conference Room 35-338. For information call x3-2153.

Maternal and Parent Education Group Meeting**—Where Do We Go From Here?—Wed, Nov 18, 12 noon-1pm, Charles Eades, M.D. chief of obstetrics and gynecology, will discuss some of the reasons for the rise in the Caesarian section rate. Nov 25, 12 noon-1pm, Margaret Sand, MIT Child Care Coordinator, will discuss the many ways to care for children and how to decide what may be best. Meetings held in the 3rd floor conference room of the Infirmary, Bldg. W5. Babies are welcome. Bring your lunch. Coffee, tea, and juice are provided.

Women Administrators' Group**—"Strategies for Professional Survival." Discussion to be led by Anne Whitman. Wed, Nov 18, 12 noon-1:30pm, Bush Room 3-105.

Medical Advisory Board**—Meeting will be held Mon, Nov 23, 12 noon, 3rd floor conference room of MIT Infirmary, Bldg. W5. Call x3-1316 if you wish to attend.

National Society of Black Engineers - M.I.T. Chapter***—General Body Meeting, Thurs, Nov 19, 7pm, Rm 400, Student Center; Mr. William A. Minter will discuss his experiences as a Black executive. Tues, Nov 24, 5pm, Mezzanine lounge, Student Center.

Social Events

Pub Party—T.W.O.***—Meet new friends, come for a relaxing evening with MIT student couples. Bring your own backgammon, Rubik's cube, scrabble, boggle, or games you enjoy playing. Snacks, drinks, music. Open to T.W.O. members only. Nov 21, 9pm-1am, Muddy Charles Pub, Walker Memorial, Bldg. 5-110.

Jeuneur Francais (French Lunch)**—Host: Alain Vaillant of Paris Ecole Normale. MIT Foreign Languages and Literatures. Lunch for French community and other interested French speakers. Tuesdays throughout Fall term, noon-2pm, McCormick Hall Dining Room.

Richard C. MacLaurin, the "Tech" Lodge—meets on Wed, Nov. 18 at 1950 Mass. Ave., Cambridge. All members of the Craft are invited. For further information please contact Stuart Nelson, x3-4884.

Movies

Lumiere D' Ete**—Humanities Film Series, Wed, Nov 18, 7pm, Rm 6-120. Free.

Fluid Dynamics of Drag, I and II**—Fluid Mechanics Films. Thurs, Nov 19, 8pm, Rm 3-270. Free.

Uncle Vanya**—Humanities Film Series. Thurs, Nov 19, 7pm, Rm 66-144. Free.

Seems Like Old Times**—LSC Movie. Fri, Nov 20, 7 & 9:30pm, Rm 26-100. Admission: \$1 w/ MIT or Wellesley ID.

Anastasia**—LSC Classic Series. Fri, Nov 20, 7:30pm, Rm 10-250. Admission: \$1 w/ MIT or Wellesley ID.

Godspell**—SCC Midnite Movie. Sat, Nov 21, Sala de Puerto Rico, Student Center. Bring a blanket and sit on the floor. Free. MIT/Wellesley ID required.

Lord of the Rings**—LSC Movie. Sat, Nov 21, 7 & 10pm, Rm 26-100. Admission: \$1 w/ MIT or Wellesley ID.

Our Man Flint**—LSC Movie. Sun, Nov 22, 6:30 & 9pm, Rm 26-100. Admission: \$1 w/ MIT or Wellesley ID.

Rocky Leacock and Marisa Silver*—will discuss their recent works. MIT Film-Video Section Monday Night Screening Series. Nov 23, 7pm, 275 Mass. Ave. Free.

That's Entertainment**—LSC Movie. Fri, Nov 27, 7 & 10pm, Rm 26-100. Admission: \$1 w/ MIT or Wellesley ID.

Lady and the Tramp**—LSC Movie. Sat, Nov 28, 2pm, 7pm, & 9:30pm, Rm 26-100. Admission: \$1 w/ MIT or Wellesley ID.

Willy Wonka and the Chocolate Factory**—SCC Midnite Movie. Sun, Nov 28, Sala de Puerto Rico, Student Center. Bring a blanket and sit on the floor. Free. MIT/Wellesley ID required.

To Kill a Mockingbird**—LSC Movie. Sun, Nov 29, 6:30 & 9:30pm, Rm 26-100. Admission: \$1 w/ MIT or Wellesley ID.

Wellesley Events

Wellesley College Exhibition

Gallery Talks**—Sundays at 3pm for general public, by special request for groups of more than 10. Interpreter for hearing impaired available second Sunday each month. Admission Free.

Drawings At Wellesley*—from the permanent collection from the 16th through the 20th centuries including works by Picasso, Pissarro, Tiepolo, Winslow Homer, Claude Lorrain and Marten de Vos. On view through Jan 15, Wellesley College Museum.

In Honor of President Keohane*—an exhibition of the finest paintings and sculpture from the Wellesley College Museum collection. Includes works by Vasari, Amigoni, Angelica Kauffmann, Piamontini, Cezanne, Leger, Matisse, Copley and Durand. On view through Jan 15. Free.

Jouissance Vous Donneray: French Music of the High Renaissance*—Wellesley College Collegium Musicum, directed by James Ladewig. Composers include Susato, Sermsy, Arcadelt, and Janequin. Fri, Nov 20, 8pm, Jewett Auditorium, Wellesley College, intersection of Rts 16 and 135, Wellesley, MA.

Hair - The "American tribal, love-rock musical"*—Wellesley College Theatre, Nov. 20, 21, and 22, 8pm, Alumnae Hall. Admission: \$3.50 at the door or send check to Wellesley College Theatre, Wellesley, MA, 02181.

Music

Noon-Chapel Concert*—Thurs, Nov 19, MIT Chapel. Music for lute and viols by John Dowland.

Erdely Duo*—Stephen Erdely, violin, Beatrice Erdely, piano. Fri, Nov 20, 8pm, Kresge Auditorium. Free.

Soft Rock Concert**—Carolina Edwards and One Horse Horizon Band, 3pm, Rm 26-100. Free.

Theater

An Evening of One Act Plays*—Presented by the MIT Dramashop. E.E. Cummings' *Santa Claus* and the Medieval Moral play *Everyman*. Nov. 19, 20, 21, 8pm, Kresge Little Theatre. Free and open to the public. For information call 253-2877.

Dance

MIT Dance Workshop**—Regular meetings, Improvisation/Composition class, Thurs, 1-3pm, Dance Studio, Dupont Athletic Center; Technique class, Mon and Wed, 3-5pm, T-Club Lounge, Dupont Athletic Center. All levels welcome. Instructor: Beth Soll. For more info call x3-2877.

Yoga*—Classes: Intermediate, 5:45pm, Beginners, 7:15pm, all levels, 12:05pm. Classes in Rm 10-340. For info call Ei Turchinetz, 862-2613.

Self-designed Fitness Class (for women)**—taught by Suzanne Brown (one of Maggie Lettvin's instructors), Mon, Wed, Fri, 1-2pm, Rm 8-219. Leotards or loose clothing and athletic card required.

Exhibits

Hart Nautical Museum*—Collection of ship models, half-models and drawings, Bldg 5, first floor. For information call MIT Museum, X3-4444.

The MIT Museum and Historical Collections*—unique collection of scientific instruments, architectural drawings, portraits, photographs and memorabilia that illustrates M.I.T.'s history and developments in 19th & 20th century American technology.

At the Museum, on view Mon-Fri, 9am-5pm, 265 Mass. Ave., 2nd flr, Cambridge. Admission: Free. For information call x3-4444.

Ongoing Exhibitions
Photographs...by Steven Tavan '72. Photographs of the natural scene: works emphasizing light, patterns and textures.

M.I.T. Alumnae in Science and Technology are the subjects of an exhibition of drawings and photographs celebrating the success of women in science and technology. Although the emphasis is on alumnae in industry and academia, material on present undergraduate women is included.

A New Look at Traditional Painting. Portraits and landscapes by David H. Lowrey using the established language of the western European tradition of painting as a means of expressing the artist's observations of the world around us.

Photographs by Timothy H. O'Sullivan 1840-1882: Photographs are from a geological expedition of the fortieth parallel 1867-1869. The expedition involved exploration and survey of land from Virginia City, Nevada to Denver, Colorado.

Selections of Posters of the First World War: From the permanent M.I.T. collection. These posters were designed for the U.S. Shipping Board by a group of well-known artists who donated their services. In the absence of mass media as we know it, these posters were a valuable communication device and conveyed a message of patriotism and shared responsibility for the successful completion of the war effort.

Mechanical Computing: slide rules, slide rules, and more slide rules.

Hayden Corridor Gallery*—Local Visions: The Urban Environs - Works on Paper by Area Artists. Public preview, Nov 20, 5-7pm. On view through January 3, 1982. Hayden Memorial Library Bldg, MIT, 160 Memorial Drive. Free admission.

Corridor exhibits: Building 4: Samuel Cate Prescott, Rogers Building, Norbert Wiener, Karl Taylor Compton. Community Service Fund, Ellen Swallow Richards. Building 6: Laboratory for Physical Chemistry. Building 8: Solar Energy, Society of the Sigma XI. For information call MIT Museum, X3-4444.

Institute Archives and Special Collections*—Hetch Hetchy Dam Controversy: Public Land versus City Water. Photographs, maps and records from the John Ripley Freeman (1855-1932) Papers.

MIT Creative Photography Gallery*—Visage - Large Format Portraiture. On view through December 16. Gallery hours: Mon-Fri: 9am-10pm, Sat: 10am-6pm, Sun: 12 noon-8pm. 120 Massachusetts Ave., Cambridge. Free admission.

Stroboscopic Light Laboratory Corridor*—Permanent exhibit of high speed photographs. Main corridor, near Rm 4-405.

The Letter as Event and Environment*—calligrapher John Cataldo's abstraction of the alphabet. Of painted wood and color sketches. On view through November 25, 4th flr., exhibit space, Bldg. 7. Free admission.

Sports

Sat, Nov 21: Men's Basketball vs. Poly Inst., N.Y., 2pm; Wrestling vs. Plymouth State, 1pm. Tues, Nov 24: Men's "B" Basketball vs. Middlesex C.C., 7:15pm.

Freshmen are encouraged to attend departmental lectures and seminars. Even when these are highly technical they provide students one means to learn more about professional work in a department and field.

*Open to the public
**Open to the MIT community only
***Open to members only

Send notices for Wednesday, November 25 through Sunday, December 6, to Calendar Editor Rm 5-113, before noon, Friday, November 20.



GROUND WAS BROKEN recently for a 210,000-square-foot office building and garage at 1000 Massachusetts Ave. on land owned for investment purposes by MIT. MIT acquired the property over several years as part of the Institute's continuing efforts to use its endowment resources to help build up tax-producing developments in Cambridge. MIT's Real Estate Office interested Dupree Associates of Cambridge and Spaulding & Slye, Boston, two major development concerns, in undertaking joint development of the office building project and provided the developers with a long term land lease. Taking part in the ground breaking were (left to right) Philip A. Trussell, MIT real estate officer; Glenn P. Strehle, MIT treasurer; Frederick Dupree, a principal in Dupree Associates; Michael B. Sherman, a Spaulding & Slye senior vice president; and Walter L. Milne, assistant to the chairman of the MIT Corporation. The first phase of the building is 43 percent leased. Occupancy is expected in the summer of 1982.

—Photo by Calvin Campbell

System dynamics conference held

Dr. Jay W. Forrester, Germeshausen Professor of Management and director of the System Dynamics Group at the Sloan School of Management, gave the keynote address at the 1981 System Dynamics Research Conference in Rensselaerville, N.Y., last month. His talk was titled, "Political Aspects of System Dynamics."

A large group from MIT participated in the conference.

Dr. Edward B. Roberts, David Sarnoff Professor of the Management of Technology, delivered an evening address, "The Second Wave."

Others associated with the System Dynamics Group who presented papers included:

Professor Nathaniel J. Mass, Professor Peter M. Senge, Dr. Alan K. Graham, Professor John D. W. Morecroft, Professor Joel Rahn, Professor John D. Sterman, George Richardson, Jack Homer, Mark Paich and Nathan Forrester.

Those attending the conference voted to establish the Jay Wright Forrester award for outstanding contributions to System Dynamics and also decided to organize a continuing annual conference series.

The conference was organized by Professor David F. Andersen of the State University of New York at Albany and Professor Morecroft of MIT.

Update on environmental issues published in Technology Review

Technology Review, MIT's national magazine of science and technology, in its November/December issue just published, updates important issues in a special "Environmental Report" focussing on hazardous wastes, carbon dioxide, public health and cancer risks.

In "Hazardous Waste: What To Do?," Selim M. Senken, MIT assistant professor of chemical engineering, and Nancy W. Stauffer, science writer at the MIT Energy Laboratory, report that hazardous chemical wastes, if properly managed, need not threaten life or the environment.

In "Carbon Dioxide: Two Sides of the Coin," Don G. Scroggin, coauthor of the recent report, "Global Energy Futures and the Carbon Dioxide Problem," and Robert H. Harris, coauthor of *Malignant Neglect*, argue that buildup in atmospheric carbon dioxide from burning fossil fuel can be stopped through conservation and by converting to renewables. Lester B. Lave, senior fellow at Brookings Institution and professor of economics at Carnegie-Mellon University, believes such efforts are futile and wants to concentrate on adapting to future climatic change.

In "Public Health," Professor Brian MacMahon, Harvard School of Public Health,

author of a controversial study linking coffee drinking and pancreatic cancer, discusses the rewards and frustrations of epidemiology.

"Cancer Risks," by epidemiologist Edward Radford, University of Pittsburgh, states that reports of cancer deaths from low-level ionizing radiation may have been underestimated. New data suggest a risk fivefold greater than officially believed, Dr. Radford says.

Other articles cover a range of environmental topics:

Dr. Norman Myers, a conservationist in Nairobi, Kenya, offers strategies for preserving nature's diversity in corn. Robert Cooke, science editor of The Boston Globe, reports improving on nature through genetic engineering of wheat. David Gordon Wilson, MIT professor of mechanical engineering, offers proposals for "internalizing the externalities" of polluting processes. Ann Rappaport of the Massachusetts Department of Environmental Quality Engineering says states can be tougher than the federal government on hazardous waste, but only with public support. And Donald Kennedy, president of Stanford University, offers the observation that being a regulator means never having to say you're certain.

Compton celebrates The Tech's 100th

The MIT Museum has collaborated with the staff of The Tech to present an exhibition in the Compton Gallery (Rm 10-150) of photographs, news stories, and artifacts of student activities at MIT over the past hundred years.

The exhibition opened Monday, Nov. 16, to coincide with the hundredth anniversary of The Tech. It will be open through Wednesday, Jan. 27.

A long display case in the hallway leading to the Gallery balances news from MIT with events of the times, surmounted by pictures, letters, and documents arranged chronologically from 1881 through 1980.

The exhibition in the Gallery is arranged chronologically too, beginning with the front page of the Tech of November 16, 1981. The photographs, news stories, cartoons and advertisements build a picture of life at MIT—the light side and the serious—over the century past.

It was a century that saw two World Wars, boom times and the Great Depression, the atomic bomb, Korea and Vietnam. Life at the Institute reflected and contributed to the changes in the world. And The Tech's docu-

mentation of it has produced a fascinating exhibition.

Among the artifacts are a grey cadet's uniform reminiscent of West Point, a model railway setup, and a grouping of classroom chairs of bygone times. The Tech itself is enshrined in a re-creation of its offices in the Student Center, complete with antique typewriter, light table, and rack of empty Coke bottles.

Casdin-Silver on Nova

Harriet Casdin-Silver, research fellow at MIT's Center for Advanced Visual Studies, appeared as a guest artist on a Nova program, *Artists in the Lab*, shown on the PBS Television Network Sunday, Nov. 15. The program will be repeated at 10pm, Wednesday, Nov. 18, on Channel 44, and at 9pm, Saturday, Nov. 21, on Channel 2.

CLASSIFIED ADS X3-3270

Ads are limited to one per person per issue and may not be repeated in successive issues. All ads must be accompanied by full name and extension. Persons who have no extensions or who wish to list only home telephones may submit ads by coming in person to the Tech Talk Office, Rm 5-113, and presenting Institute identification. Ads may be telephoned to x3-3270 or mailed to Rm 5-113.

For Sale

Zenith b&w 19" port, tubes w/ UHF converter, \$40 or best offer. R. Camp, x8-3200 Draper.

Ham radio, new, Heathkit 2 meter FM transmitter w/power pak MICODER II mike; radio HW-2036A; mike HO-1984; power pak HWA-2036-3, nvr used, completely assembled, ready for alignment, antenna still in carton, \$350. Jean, x3-3400.

Mercedes wheels, 1 pr, 6Jx14, perfect cond, fit models 220 to 280, \$30. Jim, x8-4442 Draper.

Used contemp furn in exc cond, low prices. Jean, x3-1737 or 1-369-9749 after 6pm.

Tektronix 535 scope, delayed sweep, dual trace, 10sec, plug-in, vertical amp, hi-frequency probe, all work well, manual & tips, \$260. Tom, x3-3194.

Black/grey recliner, gd cond, \$45; dark brw wingback love seat, gd cond, \$55. Betty, x401 Lincoln.

Mountaineering skis, Rossignol Randonnees, 190 cm, 64, 54, 58 mm cut, offset steel edges, w/Ramer Mountaineering bindings, adaptable to any type or sz boot, everything only 1 yr old, great cond, \$150 for all. Tom, 864-7087.

Sears hand vacuum w/72 dispos bags, \$20; Dayton 7" wall shutter fan, new, \$20; Sears 4000 BTU A/C, 14" w x 13" h x 18 1/2" L, \$40; bks, Hawthorne (22 vols, 1903); Dickens; Poetry; Sir Walter Scott (1870), Lowell (1881), Holmes (1881), Mozart (1868), Longfellow (2 vols, 1886). Call x3-2720.

Bradley elect guitar w/2 pick ups, copy of stratocaster, \$150; 75w amp, \$150. Michael, x3-5797 or 547-9090 eves.

LSI-11 PDP 11/03 CPU, like new, \$350; MSV-11c 32KB memory for above, \$270; both w/backplane kit, \$600; music board for S-100, \$100, incl doc; modem, RS-232 & 20mA, acoustic & direct, \$100 or trade with answer modem. Call 262-0609.

10-spd Peugeot men's bike, 16" diag, MGA color TV, 20" 3 spd fan, all gd cond. Carlos, x3-5095.

Mamiyaflex C-2, twin-lens reflex, studio camera, 2 1/4 x 2 1/4, w/hand grip & 80mm lens, gd cond, \$100. Call 926-5784.

Golf balls, name brands, \$3, \$5 per dozen. Ernie, x8-1278, Draper.

Adler Satellite fully elec port typewriter & case, perf working order, \$125 or best offer. Richard, x3-6908 before 3pm.

Double loft, holds 2 twin sz mattresses, perf for dble room, \$50. Alice, x5-6370 or x5-6211 Dorm.

New turbine chimney cap, fits 8" flue pipe, prevents down drafts & windy areas, \$20. Donald, x8-2876 Draper.

Snow tires, 4-ply nyl bld, E78-14, 2 Goodrich new, \$50; 2 used/Dodge Dart whls, 1/2" tread, \$30; nw Dart parts; dsc brk pads, brk linings, blts, others, make offer. New FM converter, \$10. Rr/window defog kit, \$8. M. Lewis, x5724 Lincoln.

Marantz mdl 5025 tapedeck, \$225; Maxell UDC-90 cassettes, \$2.50/ea., brand new. Stewart, x5-8831 Dorm.

Squash racket & press Bancroft, \$14; hockey skates gd cond, sz 10, \$20; Hohner recorder C-Dercant, nvr played, \$8. Odette, x3-4733.

Kenwood KX-1030 cassette deck, previous top-of-the-line mdl, 3 hds, adjust bias, freq response 35-18K w/chrome tape, gd cond, \$150, negot. John, 623-5351 after 7:30pm.

Eastern Airlines ticket worth \$125, will sell for \$100. Bril, 536-5146.

Leather Sale—women's lined brw lthr coat, sz 14, gd cond, \$50; women's waist-length brw lthr jacket, sz 14, \$20; women's Frye bts, 7 1/2 B, \$20; men's or women's custom-made brw lthr vest, nvr worn, \$25. Call 782-2752.

Hammond tone-wheel organ, highly modified, bass pedals, percussion, sacrif at \$700. Harmon-Kardon Citation Tuner, listed for \$400—will sell for \$195. Roger, x5-8884 Dorm.

Kitchen components—Hotpoint, free-standing elec stove, \$225; stainless stl sink & faucet \$50; instant hot water, \$50; wd cab incl sink base, free-standing base, 3 wall units, \$350. George, x3-1658 or 965-2841 eves.

Pair VW studded snow tires & 1 tire suitable for spare & 3 whls for VW Bug, all for \$70. Ron, x3-5267.

DR tbl, \$150; hide-away sofa bed, \$175; lge dresser, \$200; box, spring & mattress, \$175 or best offer. Call x3-5992 or 926-0050 eves.

Hardwick 36" gas range, wht, 4 burners & grid-les & oven, gd cond, \$75; 7'x3' sturdy ext door, compl w/frame & matching storm/screen door, \$90; 7'x3.5' Anderson window, center thermo-pane section w/side casement windows, \$90, all gd cond. Maxwell, x3-5580 or 876-0361.

Cat Novation Acoustic Modem, \$100 or best offer. Howard, x3-4620 or 494-9169.

Two orig equip Chrysler Cordova wheel covers, gd cond, \$25/ea. Bradford, x8-4505 Draper.

Sony CFS-65S FM/AM/SWI/SW2 stereo cassette-corder, 4 spkrs, LED level indicators, AC110v/220v or battery, sz D operated, exc cond, \$80 or best offer. Yang, 491-7021 after 7pm.

Collapsible kennel for med sz dog for airline travel, \$15; Wen 14" chain saw, \$25. Dave, x5893 Lincoln.

Humidifier, Westbend, 6 mo. old, perf cond, w/rollers, humidistat, etc, \$65 or best offer. Call 437-9321 eves or wk ends.

Ludwig drum set, 5 pc, grn & blue finish, 4 Zildjian cymbals, all hardware, & cases, \$600. Bob, x8-1418 Draper or 862-5955 after 5pm.

Motor mount for Coleman canoe, \$35; Pentax slide holder for Bellows system, \$10. Call 944-5117.

Brand new zig zag stretch stitch Nelco sewing machine, 20 designs, autom button hole, etc., hardly used, \$275 or best offer. Choudhury, x3-4699 or 864-0458.

Reel-to-reel tapes, pre-recorded by Columbia, RCA, Ampex, Capitol, etc, approx 75 total, many dbl albums, all exc cond, some nvr played, sell in groups of 5 for \$15 or all for \$200. Call x3-3905.

Love seat chrs, 1 pr, matched rt & lft, French style w/caned backs, nd new fabric on seats, all hardwood frames, vry expensive, \$150/pr. Call x3-2835.

Unused drafting set (over 30 pieces), \$40. Michael, x3-6706.

Persian Fereghan rug 26"x66" gd cond, \$75; brw hassock, \$15; 6 inter hse doors w/hardware, \$5/ea; 2 wall lamps, \$15 & \$10; 1 wht, wd cabinet, 18x41 1/2x27 1/2 w/sliding doors, \$35. Call x3-6085.

Nikkor lenses, Nor-AI, mint cond, 135 mm telephoto, \$100; 35 mm wide angle, \$65; 50 mm f2, \$40 or best offer. Ron, x3-6759 or 491-8155 eves.

75 w Hitachi 904 receiver, class G, pwr dbls to 150 w, auto lock tuning, dbl tape dubbing, warranty transferable, list \$650, asking \$325. Call x8-1409, Draper.

Wurlitzer grand piano, 5'2" L, manufactured in 1908, \$1,400. Linda, x3-6124.

Computer TRS-80, mdl I, level I Basic, 16K Ram, all original accessories, \$450. Call 494-5189.

Muraphone cordless telephone, ans only, fair cond, \$50 or best offer. Call 926-5784.

Women's hiking bts, sz 7, made by Suola of Italy, worn only 4 times, \$35 or best offer. Thomas, x3-6298 or 739-6749.

Tennis racket, "Donnay Fiber-Pro", wood/fiber-glass composite, 4 1/4" light, strung w/nylon, vry new, exc cond, \$45. Tom, 864-7087 eves.

Four (4) GM 14", 5-hole wheels, \$5/ea. Bob, x8-3157 Draper.

Nordica ski boots, men's 9 1/2 M, women's 7; both beginner, to intermediate, used once, best offer. Mike or Jill, 923-1976 eves.

3 prs boy's hockey skates, sz 1, 2 1/2, 3, Bauer & CCM; Columbia dirt bike, all in exc cond. Call 484-7982 eves.

Masterwork receiver & Garrard turntbl, \$75; dresser, \$20; K tbl, \$10; rub, 9x12, \$15; door lock, \$10; armchrs, \$15; misc, hsehold items. Call 965-4873 eves and wkends.

One pr women's shoes, beautiful, brand new, nvr worn, Taupe, feminine but sensible, paid \$70, asking, \$45. Robin, x3-2163 or 969-2428.

For immed sale, Technics SB-6000A spkrs 100W \$350; Garrard GT-15 autom belt drive trntbl, \$125; Onkyo A-5 amp, 60W/ch, \$150, Jansport X-C skis 205, \$40; ski jacket, M, \$25. Zee, x5-8984 Dorm.

B&W TV, 19", \$60; sml wood dsk, almost new, \$70; dsk lamps, \$5-\$8/ea; sml bk shif, \$15; elec heating, (1500 w, autom), \$15; suit cases, \$10-\$20/ea; Minolta autopak 600-X camera incl battery & some flashes, \$15. Call 876-4018 after 10pm or wkend.

Superex ST-PRO stereo hdphones, gd cond, \$15 or best offer. Call 926-5784.

Moving must sell, upright frostfree freezer, child's desk, toys & books, FP screen, rocker, manual typewriter, 3x6 area rug, suitcase, complete bedrm set, 20" 1-spd bike, best offer. Fred, 484-4642 after 6pm.

Schwinn continental bike, M, 10-spd, new paint, tubes, cables, tire, vry gd cond, \$110 or best offer. Lange ski bts, M, 8 1/2, exc cond; Tempest 180 cm skis, Salomon bindings, both \$20 or best offer. Jeffery, x3-1853 or 739-5043.

Two Goodyear Arriva tires, P155-80R-13, used 1 mo before car wrecked, \$80. Call x3-4240.

Compact refrig, 3.6 cu. ft., \$100; GE b&w 14" TV, \$40. Call x3-7209.

IBM model D typewriter, \$150. Bruce, x3-2966.

Mahogany buffet, \$150; tbl, \$40 twin bed w/frame, dresser, night stand, \$175; baby furniture. Call x3-5521.

Cheap tires! 1 each of E78-14, Z78-13, 155-13, 6.15-13 (with wheels), price \$6.90 ea or best offer. Tim, 247-7775 after 2:30pm.

Fireplace screen w/glass doors, black 31"x44", mesh curtain & cast iron grate, nvr used, \$350 or best offer. Call 354-3630 or x3-7411.

Moving Sale! fl sz bed, (mtrss, bx sprg, frame, sheets & blnks), \$110 or best offer; b&w port 12" TV, \$60; lamps, \$10 & \$5; elec fry pan, \$10; ckware set, \$20; cook utensils, etc, best offer; 3-spd bike, \$60; 1-spd bike, \$10. Dietmar, x3-6839.

Stereo, Vector Research, Teac cassette deck, receiver, KHL spkrs, '80 models, black finish, list, \$1,100, asking, \$700 or best offer. Call 783-1465 eves.

Waterbed, king sz, extra long, oak frame, baffled mattress, heated, (4 yr guarantee), liner, pad, exc. cond. Nathan, x3-1512 or 641-0647.

14K gold 36" serpentine necklace, \$130; 18K gold ring w/stone, \$70. Call x3-4337.

Lady's black dressy nubby wool coat w/ beaut brw mink collar, sz 18, worn 4 times, orig, \$150, selling, \$50. Call 965-3895 before 8pm, or x8-3549, Draper.

Two 9x12 rugs, 1 brw, 1 gold pattern, exc. cond, \$75, \$60 or best offer. James, x8-1564, Draper.

Oscilloscope, Tektronix type 503, DC to 450KC Bandwidth, differential vertical & horizontal inputs, min sweep time of 1 usec/cm, uncl manual; \$125. Dan, x3-6871 or 738-7949 (7-11pm).

Child's sled, optional wheels. Tony, x3-5717.

Brass fp screen, 25x38, \$15; 175-SR-14 studded snow tire, \$5. Call x3-7235.

Lifa 1 piece x-country suit, man's M (lady's XL), used twice, \$40; x-country folding waxing stand, new, \$65; cross country bts, new, szs 8, 8 1/2, (\$12/pr), 10 (\$10); rotary print dryer, \$30. Call 944-2106.

Slide rule, new in leather case (at least they help conserve energy). Call x5-6144, Dorm or 593-3198.

Beautiful handicrafts, place mats, napkins, cushions etc from India, perf unique Christmas gifts, exc qual, reas prices. Call x3-1434 or 492-5162.

Man's brw lthr coat, sz 36, hip length, lined, \$50; Motorola 12" b&w TV, uhf/vhf w/ bit-in antenna, \$25. Lee, x3-7727 wkdays.

1921 baby grand Beckman piano, new hammers, restrung, totally recond, exc cabinet, \$2,800. Chris, 864-8166.

Lthr jacket, fitted, Jr. Miss, sz 7, exc cond, rust, \$50 or best offer. Call 924-1766.

Skis, Rossignol Stratoflex 175 cm w/ Salomon 444 bindings; Caber sz 10 1/2 bts; Scott poles; men's Riedell figure skates, sz 8. Call x5-6466, Dorm.

Brown tone loveseat, dble bed sz, exc cond, \$350; wht desk, exc cond, \$50. Call x3-5027 or 489-2696.

Crib w/mattress, exc cond, \$35. Call x3-2868, anytime.

Violin for advanced or professional player, strong, sweet, responsive, graduated & rebtl by Pinson. Eileen, x3-1782.

Sears dsh/washer, gd cond, \$60; 3 roll-up shades, 3.5x6', \$10/ea; iron, \$6; plants. Call 494-8742.

Oneida stainless, Plymouth Rock pattern, 8.5-pc place settings + 4-pc serving set, exc cond, most pcs never used, \$45. Jim, x3-3751 days or 492-4941 eves & wkends.

Four bikes: 1 M, 10-spd, \$85, 1 L, \$70, 1 3-spd, \$45, 1 boy's 3-spd (10-15 yrs old). Faith, x3-7166.

Moroccan 100% handknobbed wool rug, new, off wht w/ navy design, \$450 or best offer. Call x3-6085.

Les Paul stand elect guitar by Bradley, exc cond, tobacco sunburst finish w/ 2 high ouput shock mntd humbucking pickups, gibson bridge, perfect inton, vol, tone controls, hardshell case, \$425, negot. Eric, x3-5106 days or 926-2584 eves.

Three bikes: 1 M, 3-spd, Columbia \$65; 1 M, 3-spd \$40; 1 Schwinn Sprite L, 1-spd \$35, all exc cond. Emily, 776-1954 after 6pm.

Studded snow tires on rims (4-hole) for VW, 1 gd, 1 fair. \$25/pr. John, x8-2001 Draper.

Vehicles

'66 VW bus, rusty & nds brake work, basically sound, will do 30 mpg, compl set gd tires, best offer. Martha, x3-1564.

'70 VW Squareback, \$500, couches, dressers, tbls, etc. Call x8472, Lincoln or 646-3541.

'71 VW Beetle, \$1,700. Bob, x3-6167.

'71 VW yellow convert. Super Beetle, exc cond, new tires, battery, etc., \$2,500. Call 868-3228.

'71 VW 411 Sedan, Holly, 891-7648 eves.

'71 Saab 99, 60K, \$1,400 or best offer, must sell. Call 956-7643 or 846-2302 eves.

'72 Chev Impala, Diehard battery, eng & trans changed last year, runs vry well, reliable, some rust. Call 494-8896.

'72 Plymouth Satellite, 6 cyl/reg gas, 2 dr hard-top, p/s, snow tires incl, gd cond. Best offer. Call 275-8194.

'72 Chevy Malibu, 6 cyl, 70K, little rust, \$700 or best offer. Call 735-9882.

'72 Chevelle, 93K, runs exc, nds 2 front tires, body gd cond, \$2,000 or best offer, AM/FM stereo cassette. Richard, x7393 Lincoln.

'73 Volvo Sedan, exc. cond, orig owner, dealer maintained, \$2,600. Call x3-6021 or 369-0588.

'73 Pinto Runabout, std, \$450. W. Derry, x3-2776.

'73 Jeep pickup, J4000, 6 cyl, exc cond, no rust, \$2,300. Karen, x3-3177.

'73 Audi 100LS, new eng, brakes, exhaust sys, tires & 2 free snows, gd cond, \$1,800. Minoru, x3-4840.

'73 VW bus, 15K, new eng, 115K on rust free body, \$3,275 or best offer; mixed set of golf clubs, \$30; blowgun, \$20; AM/FM RF & audio freq generator, new, \$50. Mark, 489-3358.

'73 Ford Pinto, 2 dr, 4 cyl, 85K, gd cond, 4 new tires & battery, \$600 or best offer. Call 494-1051 after 7pm.

'74 Datsun 610, blue, 4 dr sedan nds some work, asking \$1,200, negotiable. Peter, x3-1745.

'74 Pontiac Le Mans sport coupe, only 45K, a/c, p/s, p/b, auto, AM/FM, cassette, \$1,500. Call 344-0063.

'74 VW Super Beetle, sunroof, AM/FM, snows, rustproofed, \$2,000. Call 787-5136 after 6pm.

'74 Impala, gd cond, p/s, p/b, AM/FM, new batt & tires, vinyl roof, autom, little rust, \$400. Call x3-3947 or 275-5234 eves.

'75 Plymouth Gran Fury, V8, p/s, p/b, auto, 73K, eng great, little rust, dependable car, all new radials, \$900. Call 542-9298.

'75 Plymouth Gran Fury wagon, nds some work, \$450. Phil, 438-2627 after 7pm.

'75 Saab 99LE, auto, AM/FM, new brakes, excel cond, 67K, \$2,700 or best offer. Call 862-2759 eves & wkends.

'76 Buick Electra, always garaged, no rust, p/s, p/b, a/c, p/windows, p/seats, cruise control, AM/FM stereo, hiway mi, exc cond, \$1,800 or best offer. If you like luxury call 547-0309 after 6pm.

'76 Fiat 128 Hatchback, fine running cond, new battery, 2 new tires, 79K, standard shift, \$1,400. Call 646-8298 eves.

'76 Mustang Mach I, 64K, 4 spd, ac, p/s, p/b, radial tires, V6, \$2,500. Call x3-1853 bet 1 & 2pm only.

'78 Mercury Zephyr, 1 owner, 39K, exc cond, 27 mpg, must sell, leaving country. Francois, 782-8208, x3-1824.

'78 Harley-Davidson low rider, 1,200cc, custom paint, lots of chrome, exc. cond. Call 875-3326 eves or x3-8284.

Housing

Allston, 2 RM studio, & priv B, pking avail, nr T, avail Dec 1, \$325/mo incl hot water & ht. Antoine, x3-3375 or 787-0622.

Apartment to sublet Dec. 15 to end Jan., 2 BR, mod, sunny, next to lake, very nicely furn, to clean, reliable couple or individual, security deposit. Call 646-4803.

Back Bay, sml 1 BR condo for sale, hardwd flrs, fp, riverview, roofdeck rights, \$46,500. Jerry, x3-3601.

Back Bay, sublet, furn, quiet, walk in, sit down, nr MIT, BU, parquet flr, fp, sunny 1 BR, LR/studio, can accom 2 adult students, Jan-Aug, util incl, \$595/mo. Call x3-4452 or lv number at 14N-420.

Belmont, hse for rent during sabbatical leave of owner, Dec or Jan to July 30, '82, 4 BR, 1 LR, 1 DR, study, 1 1/2 b. Call x3-3598.

Brighton, 1 BR apt, \$350, avail Nov 16. Barbara, x3-2979 or 787-2584.

Brookline, nicely furn, 2 BR apt, avail Spring semester, \$750. Stan, 277-2535 or x3-2053.

Brookline, 2 BR furn, sublet, Dec. '81-Jan '83, convenient to public trans, Coolidge Corner area, \$700 + ht and util. Call 739-3379.

Conway, N.H., shore lot on clean, quiet lake in Eidelweiss, 4 season development, owner mortgage avail. Peter, x8-1188 Draper.

Eastgate, sublet lge corner, 1 BR apt, 14th flr, furn, avail immediately till Feb. 1. Call 494-9099 or x3-4189.

Ipswich, sunny, 4 BR hilltop victorian for rent on 5 acre. Call 1-356-4485 or x3-4963.

Lake Winnepesaukee, N.H., vacation hse, 198' lake frontage, dock, 2 B, 3 BR + bunkrm, fully insulated, elec heat, water from lake. Call 369-9460 or x3-2150.

Lynn-Swampscott line, 20 min from MIT, 6 RM apt on first flr, driveway, \$400/mo. no util. Jose, x3-2100.

Newburyport, huge bright, 3 BR apt, freshly painted, fireplaces, \$475 per mo. Rich x8-3959, Draper.

N. Conway area ski chalet rental, close to 4 ski area, 3 BR, 1 1/2 B, w/w, fp, slps 8, Dick, x7124 Lincoln.

Somerville, Winter Hill area, studio apt, eat-in K, heat & util incl, \$225/mo + security deposit. Peter, x3-5505 or 625-2188.

South End, Gray St., 2 BR apt, roofdeck, wood stove, dishwasher, pet ok, sunny, view, \$750 incl heat, avail Dec. 1. Call x3-3368 or 423-0137.

Thanksgiving in Vermont, fully equipped hse on hill overlooking West River not far from Brattleboro, slps 6-8, \$400. Call 734-9187 or x3-7078.

Watertown, spac 2 BR apt, lg K, basement, garage pking, faculty or grad student pref, \$400. Dan, 926-2374.

Watertown, 2 BR apt, 10 min walk to Sq., upper fl of

POSITIONS AVAILABLE

It is Institute policy not to discriminate against individuals on the basis of race, color, sex, sexual orientation, religion, handicap, age, or national or ethnic origin in the administration of its programs and activities.

This list includes all nonacademic jobs currently available on the MIT campus. Duplicate lists are posted on the Women's Kiosk in Building 7, outside the offices of the Special Assistants (10-215, 10-211) and in the Personnel Office (E19-239).

Information on openings at Lincoln Laboratory (Lexington, MA) is available in the Personnel Office.

Persons who are NOT MIT employees should call the Personnel Office on extension 3-4251.

Employees at the Institute should continue to contact their Personnel Officers to apply for positions for which they feel they qualify.

Pat Williams 3-1594
Anne Whitman 3-6510
Appointments: Ann Canavan 3-4270

Virginia Bishop 3-1591
Richard Cerrato 3-4266
Ken Hewitt 3-4267
Appointments: 3-4268

Sally Hansen 3-4275
Vera Ballard 3-4277
Kathleen Rick 3-4269
Appointments: Kate Young 3-4274

Dick Higham 3-4278
Ann Perkins 3-6511
Appointments: Tertia Perkins 3-6513

Administrative and Academic Staff

Production Manager, Design Services, to design and produce publications of all kinds for clients throughout the Institute. This individual will take responsibility for the production phase of projects undertaken by designers in this office, with specific duties including: research of print alternatives; development of printing schedules; marking of copy; lay-out; instruction of typesetters as well as coordination of their activities; dealing with printers and other vendors; ensuring that production is done within specified financial limits and according to deadlines. Candidates must have a Bachelor's degree or the equivalent combination of education and experience, as well as considerable experience in production aspects of publishing. Good communication skills are necessary, with the ability to work effectively under deadlines. Strong organizational skills vital. A171

Sr. Applications Programmer, Administrative Information Systems, whose primary responsibility will be to assist in developing external system specifications and translating them into internal system specifications and computer programs. Specifically, this individual will prepare program logic diagrams for operational use and future maintenance; assist other programmers in programming, testing and debugging techniques; prepare program modification or enhancement specifications; establish file requirements; process techniques; attend classes and seminars to keep abreast of new developments in the field; and perform other related tasks as required. This individual may, at times, exercise functional supervision over application programmers. Candidates should have an Associate's degree or the equivalent combination of education and experience. Substantial programming experience vital. A170

Head Librarian of Serials Cataloguing Section, Libraries, to administer all functions of the Serial Cataloguing Section, under the direction of the Head of Cataloguing Dept. Will plan future directions for section; establish section policies and procedures; interpret network documentation; implement new procedures and system modifications; assume overall responsibility for publication of the computer-produced holding list; and catalogue serials in one or more subject fields, including establishing authority records. Candidates must have a Master's degree from an ALA-accredited library school, along with 5 years library experience. Knowledge of LC classification and original cataloguing of serials, plus advanced knowledge of OCLC serial cataloguing system, essential. Demonstrated supervisory ability along with proven success in directing a group effort highly desirable. Experience in a research library with significant engineering and science collections preferred. C050

Assistant Librarian for Reference, Dewey, will take responsibility, under Associate Dewey Librarian, for reference services and library instruction programs. Will have selection responsibility in one of the major social science disciplines; will conduct computer literature searches; prepare bibliographic guides; and participate in selecting reference materials. This individual will supervise the Library's circulation desk staff, 2 stack supervisors, and student staff working in these areas. An M.L.S. degree from an ALA-accredited library school is needed, with subject background in social sciences. Experience in collection development and/or reference highly desirable. Some knowledge of foreign languages, specifically French, German, Russian and/or Spanish, helpful. C049

Sponsored Research Staff

Applications Programmer, Laboratory for Nuclear Science, for the Laboratory's Accelerator Physics Collaboration (APC) group. Will develop, write, debug, and test computer programs for the real-time analysis of bubble-chamber film via PEPR (Precision Encoder Pattern Recognition), a flying-spot CRT (Cathode ray tube) scanner controlled by a DEC system-10. This position involves correctly posting and solving challenging problems in pattern recognition, real-time control, graphics and human engineering, while integrating the whole into a system that maximizes throughput and accuracy. Requires a Bachelor's or higher degree or the equivalent in Physics, Mathematics, Computer Science or a related field. Knowledge of FORTRAN, micro-10 and experience with TOPS-10 helpful, but aptitude as well as experience will be considered. R645

Technical Assistant, Dept. of Nutrition and Food Science, involves research on nucleic acids and proteins; specifically, protein and nucleic acid purification and characterization. It is desirable to have experience in basic biochemical techniques such as column chromatography, gel electrophoresis, enzymatic assay, operation of pH meters and spectrophotometers. Must eventually be able to work without supervision and must develop innovation problem solving abilities. Bachelor's degree in science or equivalent is required. R648

Electrical Engineer, Plasma Fusion Center, to join the RF Heating Group of the Alcator tokamak program, which is studying the heating of thermonuclear grade plasmas. This individual will design analog voltage and rf phase measuring circuits and digital control circuits to fully instrument new microwave arrays and high power rf generating systems, as they are brought on line; may also implement additional computer-based CAMAC data collection hardware as this system is expanded. A BSEE degree or its equivalent is required, along with a sound background in digital and analog design. R520

Exempt

Registered Nurse, Clinical Research Center, to be responsible for general and specialized nursing procedures and medications in this 12-bed well-patient research unit. Will take charge duties when necessary; work closely with laboratory and dietary departments; maintain complete and current information on patients' conditions and studies being performed; and work, generally, under the close supervision of the Head Nurse and Investigators. Position involves rotating to nights. Applicants must be graduates of an accredited nursing program and have their Massachusetts registration, along with a minimum of 2 years experience. Pediatric experience will be considered. Good interpersonal skills are important here. E088

Secretary/Staff Assistant

Administrative Secretary, Treasurer's Office, to perform high level secretarial work, including many duties of an administrative assistant. Will fill out reports; check accounting statements; perform reception work; pay bills, summarize work flow; order supplies; arrange meetings; develop filing system; as well as supervise a part-time secretary. This individual will aid in preparation of more than a dozen budgets, as well as perform research in various fields of law and insurance. There will also be considerable report writing, along with editing supervisor's reports. Candidates must have 4 to 5 years of direct or related experience, or an equivalent combination of education and experience. Excellent typing and general office skills are essential. Legal secretarial experience and/or knowledge of legal terminology desirable. College background preferred. This individual must have the capacity to order priorities independently. B1464

Sr. Secretary, Admissions Office, to perform secretarial duties for two admissions officers. Will keep calendars; handle mail; arrange travel; assist other staff members as needed; plus function as a receptionist when necessary, answering phones and scheduling appointments. Applicants should have excellent typing and organizational skills, along with the readiness to work in a busy setting. Familiarity with dictaphone equipment also essential. Since this position involves contact with a great variety of persons, good interpersonal skills are important. NON-SMOKING OFFICE. B1471

Sr. Secretary, Sloan School of Management, to provide office support for 2 faculty members in Operations Research (an area with the Management Science Group that is concerned with the application of mathematical techniques to resource allocation and other business problems). Will cover phones; schedule appointments; answer inquiries independently; type correspondence from handwritten drafts and dictaphone; type reports and classnotes, sometimes organizing and editing that material; as well as assume some administrative responsibilities as needed. This individual will share work overloads with others in the dept. Requires 2.5 years direct/related experience or the equivalent combination of education and experience. Good typing and organizational skills are essential. Technical typing experience is highly desirable. The capacity to order priorities with minimal direction, while working in a hectic setting, is important. B1470

Sr. Secretary, Sloan School of Management, to provide secretarial support for the Director of Admissions and the Master's Program Coordinator, while reporting to the Director of the Master's Program. Will answer phones; handle mail; type memos, letters, and reports; photocopy; file; answer inquiries from faculty, students, applicants, etc.; assist with processing of applications; assist in coordination of thesis process, including collecting forms, maintaining files, answering students' questions re: format and procedure, and checking theses when submitted. Two to three years of direct or related experience are necessary, along with accurate typing and well developed organizational skills. This individual will be called upon continually to communicate smoothly and effectively with a great variety of persons; good interpersonal skills are therefore vital. This is a busy, service-oriented office. NON-SMOKING OFFICE B1468

Sr. Secretary, to provide general secretarial support to Director and staff in Office of Finance & Administration at the Sloan School of Management. Will answer phones; receive

visitors; schedule meetings and appointments; type and proofread correspondence as well as other materials from rough draft; photocopy; file; process RA and TA appointments and maintain related records; produce annual accounting reports on RA and TA appointments; prepare hourly and voucher student payrolls; maintain inventories on surplus equipment, furniture, office supplies, etc.; provide liaison with building maintenance and Physical Plant; monitor accounts; and provide support to other administrative offices as needed. Candidates should have 2 to 3 years direct or related experience, or an equivalent combination of education and experience. Good interpersonal skills as well as the ability to perform detailed numerical tasks essential. This individual must also be prepared to set priorities and complete complex tasks independently. NON-SMOKING OFFICE B1466

Sr. Secretary, Nutrition & Food Science, to provide general secretarial support for several members of toxicology faculty and their research groups. Will type and proofread manuscripts, correspondence, grant applications, reports, etc.; answer telephones; act as liaison between departmental administrative office and toxicology group; monitor several research grant accounts and prepare monthly reports; prepare requisitions, requests for payment travel vouchers, time cards and other Institute forms; as well as prepare copy for slides and transparencies plus other course materials being developed by faculty members. Applicants must have 2 to 3 years applicable experience, or an equivalent combination of education and experience. Good typing and organizational skills are needed, along with the ability to work with minimal supervision. Familiarity with basic bookkeeping and knowledge of MIT helpful. NON-SMOKING OFFICE B1465

Sr. Secretary, Nutrition & Food Science, to type and proofread reports, manuscripts, examinations, and laboratory manuals from rough drafts. Will also answer telephones; receive visitors; handle mail, answer routine correspondence, set up files; schedule meetings for faculty and research group; arrange travel; photocopy; monitor and forecast research accounts; operate word processor, as well as provide liaison between researcher and the administrative office. Two to three years of direct/related experience needed, or the equivalent combination of education and experience. Typing skills are also essential, along with the willingness to use dictaphone and word processor. NON-SMOKING OFFICE B1462

Sr. Secretary, Industrial Liaison Program, to provide secretarial support for the Assistant Director and one Industrial Liaison Officer. Will handle correspondence as well as routine requests for information; schedule appointments for visitors from member companies to meet with MIT faculty and staff; maintain statistics on activities of member companies and prepare statistical reports; coordinate busy appointment calendars; arrange travel; host some on-campus visits; as well as receive some in-house training on computer in order to participate in the workings of this computer-based office. Applicants should have 2 to 3 years direct or related experience, or an equivalent combination of education and experience. Excellent typing, dictaphone, and organizational skills are needed. B1460

Sr. Secretary (part-time), to provide office support to a small group of research physicists in the Laboratory for Nuclear Science. Will take responsibility for all general secretarial duties, such as typing correspondence as well as both technical and non-technical reports; mailing reprints, preprints; handling other mail; scheduling appointments and meetings; and setting up filing system. Requires 2.5 years of direct/related experience, along with excellent typing and dictaphone skills. The ability to work with minimal supervision is important. B1454

Sr. Staff Assistant, Libraries, to provide moderately complex clerical support in the Aga Khan Documentation Ctr. Will transfer raw data to standardized forms; input data into computer; prepare and type camera-ready copy for reproduction; photocopy; prepare and process large scale mailings; maintain project files; perform routine secretarial duties for two or more supervisors, including typing correspondence and reports, handling office mail and covering telephones, maintaining files and records, scheduling meetings, ordering supplies, handling petty cash, operating office machines, and reviewing office accounts. This individual may, at times, direct the work of clerical assistants. Candidates must have excellent typing skills (60 wpm), along with an excellent command of English usage. Accuracy in handling details crucial. Knowledge of French or German as well as some college background desirable. B1453

Sr. Secretary, to provide office support for four faculty members of the Dept. of Nuclear Engineering. Will type articles, proposals, classnotes and general correspondence from handwritten drafts and dictaphone; answer telephones; file; schedule meetings and appointments; arrange travel; and perform other administrative support services as required. Two to three years experience needed, along with dictaphone skills and the ability to handle workloads with minimal supervision. Technical typing desirable. B1452

Sr. Secretary, Provost's Office, to provide secretarial support to the Administrative Officer. Will type and proofread correspondence and reports, with attention to proper format, spelling, punctuation and routine verification of references; will handle mail; photocopy; monitor accounting statements; manage complex filing system; provide backup support to reception area support staff, as well as perform secretarial duties for the Provost and his Assistant. High school graduation or the equivalent is necessary, along with good typing and a command of English. Attention to detail and the willingness to work as a member of a team are also essential. At times this individual will have to handle sensitive matters, exercising judgment independently. Some college background preferred. B1372

Sr. Secretary, Resource Development, to provide secretarial support for the Associate and Assistant Directors. Will type letters, memos, backup material for solicitation visits, schedules and visit reports on the word processor and typewriter. Will also handle telephone calls for the Assistant Director; maintain files for the Associate Director; process incoming and outgoing mail; arrange travel; handle appointment calendars; and assist with other miscellaneous tasks, such as photocopying, as required. Excellent typing is needed, along with a strong sense of organization and a pleasant telephone manner. The capacity to work in a busy setting, handling more than one project simultaneously, and meeting occasional deadlines, is essential. It is also important for this individual to be able to

work with minimal supervision. Word processing experience preferred. NON-SMOKING OFFICE. B1409.

Sr. Secretary, to perform administrative and secretarial duties in the Sloan School of Management for 2 faculty members in the Information Systems and Law. Will prepare course materials, research proposals, reports, and correspondence; arrange travel; maintain calendars; screen telephone calls; file and keep account records; order office and software supplies. In addition this individual will coordinate international conferences, process journal articles, and generally support other major professional activities. Requires 2.5 years direct/related experience, along with strong general office skills, the ability to organize work independently and to communicate smoothly with a great variety of persons essential. Experience in or the willingness to learn word processing also crucial. NON-SMOKING OFFICE. B1312

Staff Assistant, to perform general secretarial duties under direct supervision, for 3 faculty members of the Artificial Intelligence Laboratory. Will type and proofread reports, manuscripts, examinations, and correspondence, often using computer text-editor. Will also answer telephones; receive visitors; maintain files; schedule meetings, seminars and other appointments; arrange travel; as well as share responsibility for answering laboratory's main telephone. Applicants should have a minimum of a year's experience, or an equivalent combination of education and experience. It is also essential that applicants be able to set priorities independently, while working in a busy setting. Willingness to learn computer text-editing system vital. Good interpersonal skills important. College background preferred. NON-SMOKING OFFICE B1463

Secretary, Administrative Information Processing Services, to provide office support. Will type and proofread reports, correspondence and similar materials from rough drafts or direct instruction; answer telephones; receive visitors; provide routine information; sort and distribute mail; maintain files and records; schedule appointments and meetings; prepare various Institute forms; order and maintain inventory of office supplies; and operate office machines and equipment. This individual will have to make decisions independently, at times, regarding the application of departmental or office policies and procedures for one or more supervisors. B1427

Technical Support Staff

Assistant Computer Operator, IPSO, who will perform all computer related duties, including error detection and correction. Candidates should be high school graduates or have the equivalent. A minimum of a year's experience in the operation of IBM 370/148 DOS and VSI is necessary. Knowledge of JCL preferred. B1459

Office Assistant

Administrative Assistant, Mechanical Engineering, to provide support for the Executive Assistant to the Dept. Head. Administrative and editorial duties will be diverse; will serve as Catalog Officer; compose copy for ASEE newsletter, notices, correspondence, etc.; manage professional award nominations; arrange faculty meetings; assist in research, editorial and clerical capacities, with various reports; assist with special projects, affirmative action, promotion and tenure cases; maintain complex files and records; as well as perform typing chores. Requires at least 4 to 5 years experience, or the equivalent combination of education and experience. Excellent typing and organizational skills are crucial, as well as preparedness to work in a hectic setting. An Associate's degree in Business is desirable. This individual must be able to deal reliably with confidential information. B1469

Sr. Office Assistant, Registrar, to prepare schedules for classes, final examinations, and student registration. Will also prepare MIT Planning Calendar; assist with preparation of MIT Catalogue material; maintain filing systems; and perform other related duties as assigned by supervisor. Two to three years experience or an equivalent combination of education and experience are required. Good typing skills are essential, as well as the ability to communicate smoothly and effectively with a variety of persons, including students, faculty and staff. Attention to detail important. Some overtime will be required. B1446

Office Assistant, Graphic Arts Service, to perform daily posting of time, materials and purchases to Profit Control Computer Management System for obtaining daily, monthly, yearly, etc. production cost analysis and miscellaneous reports. Will also provide back-up support for one other person in this area. This individual will be responsible for other clerical duties, such as pricing and posting, etc., as assigned. Applicants should have good typing and general office skills, as well as an aptitude for working with figures. Experience with computers desirable. B1467

Office Assistant, Bursar's Office, to type correspondence and keep addresses up to date for computer system and loan records. Will also record loan payments on cash receipt logs; verify dollars received; log payment schedules; prepare loan notes; assist borrowers in signing notes; answer inquiries concerning accounts over telephone and at counter; and order office supplies. Good typing skills are needed, with particular experience in correspondence typing. A command of English spelling is also essential, as well as clear handwriting. Position involves contact with a steady flow of borrowers; good communications skills are therefore vital. This individual should have experience with an adding machine. B1461

Office Assistant, System Dynamics Group, to act as departmental receptionist, answering telephones, sorting mail, keeping faculty schedules, and assisting with word processing. Performing routine, light accounting tasks may be necessary at times. Modest typing skills are required, along with the ability and willingness to learn word-processing. NON-SMOKING OFFICE. B1455

Service Staff

Technician B, Nutrition & Food Science, to assist in laboratory or research work and operate experimental and technical equipment under the supervision of scientific personnel or technicians of a higher grade. Will prepare all media for experiments and classes; sterilize and decontaminate all equipment, glassware and media for experiments; order and maintain inventory of supplies; maintain constant temperatures of rooms; as well as work, at times, without supervision. Requires graduation from

a 2 year day technical school; or the equivalent in applicable experience. H566

Technician B (Electro-Mechanical), Electrical Engineering and Computer Science, to assist in laboratory or research work and operate experimental equipment under the supervision of scientific personnel. Will have direct responsibility for maintenance and operation of equipment in the photolithography and maskmaking areas of specialization, within the department's Microelectronics Laboratory. Will assist with installation and maintenance of electronic test equipment and instrumentation. Candidates must have graduated from a 2 year day program at a technical school or have the equivalent in applicable experience. The ability to work with equipment found in the semiconductor device processing industry also necessary. Being able to interact successfully with students and to set work priorities independently are also important qualifications. H549

Machinist A, Chemistry, With minimal supervision this individual will set up and operate machine tools, working to close tolerance with blue prints, specifications, verbal instructions, or sketches. Will also make such tools, dies, jigs, and fixtures as may be required in the work. May be called upon to train and direct machinist of lower grades. Applicants should have a minimum of 5 years applicable experience as a machinist, as well as expertise with all commonly used machine tools. H548

Technician A (Radiation Protection), Environmental Medical Service, to assist in laboratory, research or analytical work under direction or supervision of scientific personnel; operate highly technical experimental apparatus; has demonstrated considerable skill and good performance in the particular field of activity; requires some supervision. Duties (carried out principally at the MIT Reactor) include: repair and calibration of instruments, radiation surveys, sample preparation, decontamination and lab clean-up work, packaging of radioactive waste and handling of waste drums, assistance in shielding areas using concrete and lead blocks, and other miscellaneous non-scheduled duties. Requires graduation from a two-year day technical school or its equivalent and a minimum of 2 years' applicable experience. In addition, should have had training and experience in electronics and radiation protection (minimum 2 years' experience). H411

The following positions were still available at Tech Talk deadline. Complete descriptions of these jobs and other available positions are posted in the Personnel Office (E19-239), and at locations listed at the beginning of Positions Available section.

ADMINISTRATIVE AND ACADEMIC STAFF:
C048, Archival/Manuscript Specialist, Libraries
A165, Data Base Manager, Alumni Association
A164, Purchasing Agent, Purchasing and Stores
A163, Program Manager for Management Information System, Physical Plant
A159, Systems Programmer, Information Processing Services
A158, Systems Programmer, Information Processing Services
A157, Purchasing Agent, Purchasing and Stores
A135, Applications Programmer, Information Processing Services Operation
A134, Systems Analyst II, Administrative Computing Services
C041, Postdoctoral Associate, Plasma Fusion Center
A087, Systems Analyst II, Administrative Computing Services
A084, Administrative Staff, Area Coordinator/Systems Analyst, Administrative Computing Services
A082, Administrative Staff, Systems Analyst, Information Processing Services
A004, Administrative Staff, Sr. Systems Programmer, Information Processing Services Operation

RESEARCH STAFF:
R643, Technical Assistant, Center for Cancer Research
R642, Research Scientist, Research Lab. of Electronics
R639, Sponsored Research Staff—Engineer, Health Sciences & Technology
R638, Staff Engineer, Haystack Observatory
R628, Programming Manager, Mechanical Engineering
R520, Electrical Engineer, Plasma Fusion Center
R622, Technical Assistant, Nutrition and Food Science
R618, Magnet Design Engineer, National Magnet Laboratory
R605, Programmer/Analyst, Plasma Fusion Center
R604, Technical Assistant, Biology
R593, Research Associate, Earth & Planetary Sciences
R592, Technical Assistant, Biology
R588, Research Associate, Earth & Planetary Sciences
R579, Economist/Policy Analyst, Energy Laboratory
R581, Engineer, Ocean Engineering
R576, Magnetic Separation Engineer, National Magnet Laboratory
R575, Sr. Magnet Design Engineer, National Magnet Laboratory
R566, Research Scientist, Experimental, Plasma Fusion Center
R563, Research Scientist, Center for Space Research
R558, Research Scientist, Artificial Intelligence Laboratory
R557, Research Specialist, Artificial Intelligence Laboratory
R556, Research Specialist, Artificial Intelligence Laboratory
R555, Research Specialist, Artificial Intelligence Laboratory
R541, Electronics Engineer, Haystack Observatory

R539, Research Associate, Earth & Planetary Sciences
R520, Electrical Engineer, Plasma Fusion Center
R518, Research Staff, Mechanical Engineering
R512, Control Systems/Diagnostics Engineer, Plasma Fusion Center
R511, Power Electronics Engineer, Plasma Fusion Center
R504, Sponsored Research Staff, Laboratory for Nuclear Science
R500, Research Scientist-Computational/Theoretical, Plasma Fusion Center
R485, Research Engineer, Plasma Fusion Center
R475, Assistant Director, Aeronautics & Engineering
R455, Theoretical/Computational Research Scientist, Plasma Fusion Center
R442, Principal Research Scientist, Mechanical
R434, Systems Programmer, Lab. for Computer Science

Charities drive passes halfway mark

The fund drive for the Massachusetts Bay United Way and the Massachusetts Black United Fund at MIT has been extended because contributions are being returned more slowly than expected.

The drive was originally scheduled for one month, Oct. 13-Nov. 13, but only \$86,191 of a hoped for \$165,000 has been turned in so far. A total of 1,240 people have contributed.

The Greater Boston area as a whole has responded very well to this year's increased needs for the private charities. On November 1, \$20,900,000 had been collected toward a goal of \$26,000,000 for the United Way, putting community contributions at 80 per cent of the goal.

The Education Division seems to lag. MIT is now at 50 per cent of its goal, which is in line with the entire education division, comprised of schools and colleges in the Boston area.

In order to close the books on the campaign here at MIT, solicitors are urged to send in contributions weekly—not waiting until all the cards for their areas have been returned. The cards and contributions may be sent to Ann Perkins Brazier, Campaign Coordinator, Rm 50-356, or to the Cashier's Office, Rm 10-180.

MacArthur

(continued from page 1)

foremost concerns of college administrations everywhere," President Gray said.

The total Foundation grant of \$15.6 million is one of the largest single endowment awards made by a private philanthropic organization in a single year directed solely to the support of faculty.

"The calibre of instruction in our colleges and universities has to be the concern of everyone," Mr. Corbally said, "and that calibre and competence is threatened by three factors: the erosions in salary caused by inflation; the handsome, competing salaries offered by the private sector; and tenure which, while protecting academicians, which is as it should be, is a barrier to advancement for junior faculty."

"Even by providing more than \$15 million," he said, "we are doing little more than calling attention to the problem."

Seminar to explore agriculture frontiers

The Technology and Culture Seminar at MIT will sponsor a talk by Frederick M. Ausubel, professor of biology at Harvard University, entitled "The Potential Impact of Genetic Engineering on Agriculture," at 4:30pm, Thursday, Nov. 19, in the Mezzanine Lounge of the Student Center.

Dr. Ausubel is particularly interested in applying molecular genetic techniques, including recombinant DNA techniques, to problems in agricultural science. For the past six years he has concentrated on the molecular biology of nitrogen fixation genes in free-living and symbiotic nitrogen fixing species. In addition he has been developing a model genetic system for plant tissue culture cells which will ultimately be used as recipients for an engineered package of nitrogen fixation genes.

Harry G. Wilson

A funeral service was held Monday, Nov. 16, for Harry G. Wilson, 63, of Medford, a former evening custodian in Physical Plant. Mr. Wilson, who died November 12, worked at MIT from 1971 until he became disabled in 1979.

He is survived by his widow, Betty Nunley Wilson; a daughter, Carole Alkins of Brockton; two sons, Harry G. III and Dennis G. Wilson of Boston, and five grandchildren.

Frederick Doyle

Word has been received of the death on October 12 of Frederick Doyle, 79, of Reading. Mr. Doyle, who retired in 1973, was a project technician at the National Magnet Laboratory from 1962 until his retirement.

Mr. Doyle is survived by his wife, Catherine, and a son, Frederick, Jr. of Reading.

Four accept new assignments in Personnel

James J. Culliton, director of personnel, has announced new assignments in the Personnel Office.

Kerry B. Wilson, formerly wage and salary administrator, has been named manager of compensation and employment.

Dr. Isaac M. Colbert, who has been assistant equal opportunity officer, will become manager of faculty and staff information services.

Joan F. Rice, involved in personnel development for the past several years and since last spring assistant to the director, has been appointed manager for personnel services and development.

Mr. Wilson, Dr. Colbert and Ms. Rice join James J. Fandel, manager for labor relations, as heads of the major sections of the Personnel Office. Mr. Culliton said the new assignments were made to make the most effective use of available resources and to improve the overall cohesiveness of the Personnel Office.

Additionally, Susan A. Lester, who has been a personnel officer, has become assistant manager for wage and salary administration.

Mr. Wilson, a graduate of Harvard College, has been affiliated with the Personnel Office since 1963, except for two years when he was administrative officer of the Center for International Studies. He has been wage and salary administrator since 1973 and has now assumed overall responsibilities for all compensation matters including benefits admin-



Mr. Wilson



Dr. Colbert



Ms. Rice



Ms. Lester

istration, wage and salary and employment coordination.

Dr. Colbert, who came to the Institute in 1977 as a senior consultant/trainer in personnel development, has been assistant equal opportunity officer since 1979. He is a graduate of The Johns Hopkins University, with MA and PhD degrees from Brown University in experimental psychology. In his new position he will be responsible for the maintenance, privacy and accuracy of all personnel records including supervision of the computerized database and systems. He will also serve as the interface with individuals seeking statistical information for various regular needs and special studies.

Ms. Rice was born and educated in Australia. She joined the Personnel Office in 1972 as

administrator of the Tuition Assistance Program and has played an important role in designing, developing and conducting a wide variety of employee development programs. In her new position she will be responsible for coordinating the work of the personnel officers and development programs.

Ms. Lester, a graduate of Elmira College, has had a variety of assignments in the Personnel Office since she joined it in 1964, has supervisory responsibilities for implementation of policies assuring fair and equitable salary administration for all nonacademic personnel, including the various salary reviews. As personnel communications officer in 1978-79, she was responsible for the development and publication of the Personnel Policy Manual now in use throughout the Institute.

Arts Council to hold tenth annual meeting

The Council for the Arts at MIT will hold its tenth annual meeting at MIT on Friday, Nov. 20.

The first and third of three sessions entitled "The Many Disciplines: The One Imagination," will be open to the public, as will a business meeting from 9-10am. The meetings will be held in Kresge Little Theatre.

The first session, from 10:30-11:30am called Overviews, will begin with a welcome and introduction by MIT president Paul E. Gray, followed by an address, "The Arts Imperative: The University and Beyond," by Henry A. Millon, dean of the Center for Advanced

Study in the Visual Arts of the National Gallery of Art, Washington, D.C. Dr. Millon is also a visiting professor in the Department of Architecture at MIT.

The third session (Previews) from 2:30-4:30, will be chaired by Institute Professor Jerome B. Wiesner, chairman of the Council for the Arts, and will consist of presentations from three members of the MIT faculty, Barry Vercoe, associate professor of music and technology and director of the Experimental Music Studio; Heather Lechtman, professor of archaeology and ancient technology and director of the Center for Materials Research in Archae-

ology and Ethnology; and Walle Nauta, Institute Professor and professor of neuroanatomy.

Professor Vercoe will speak on performance and technology, Professor Lechtman on art and research, and Professor Nauta on imagination and the brain.

The session will close with comments and discussion led by the poet Stanley Kunitz. Mr. Kunitz was one of the original members of the Council for the Arts at MIT. It was he who coined the phrase, "There are many disciplines but only one imagination," which the Council for the Arts adopted as its motto, and which sets the theme for this meeting.

Proposals sought

The Council for the Arts has issued a call for proposals for the third round of grants this year.

Council grants, which are awarded by the Council's Grants Committee, chaired by Lewis P. Cabot, vary in amount from several hundreds to several thousands of dollars. Because funds are limited and competition intense, preference is given to projects that are more than usually imaginative; that use one or more art forms in interdisciplinary ways and that launch new initiatives; that aim at special one-time events, or that contribute to the cultural education of MIT students. In its second round this year, the Grants Committee funded 11 out of 13 proposals.

The next deadline is Monday, November 23. Additional information, application forms and guidelines may be obtained from the Council office, Room 20D-220, x3-4003.

Wiesner, Rosenblith stay in Building 4

The room numbers listed in the new Institute Directory for Institute Professors Jerome B. Wiesner and Walter A. Rosenblith refer to offices they will occupy in the new headquarters of the Program in Science, Technology and Society. Meanwhile Dr. Wiesner, who is president emeritus, remains in Rm 4-246, and Professor Rosenblith, who is former provost, remains in Rm 4-256 until further notice. Their telephone numbers as listed in the directory are correct.

Epstein wins grant

Dr. David M. Epstein, professor of music in the MIT Department of Humanities and conductor of the MIT Symphony Orchestra, has been chosen to receive an ASCAP award for the year 1981-82. The awards are made by the American Society of Composers, Authors and Publishers to assist and encourage writers of serious music.

Hayden Corridor exhibit: Urban Environs

Local Visions: The Urban Environs, an exhibition of works on paper by 14 Boston artists, will be shown in the Hayden Corridor Gallery from Saturday, Nov 1, through Sunday, Jan 3, 1982.

The exhibition, sponsored by the MIT Committee on the Visual Arts, documents a variety of ways that Boston area artists respond to their immediate visual surroundings. The exhibition will include inventive uses of photography, cast paper and collage as well as works in the traditional mediums of oil, watercolor, ink and charcoal.

Despite the diversity in subject, medium and working method, each artist has contributed work predicated on a direct and personal response to a common environment. They will all be present at a public opening reception at the Gallery Friday, Nov. 20, 5-7 p.m.

Several of the artists will show mood studies of specific neighborhoods: Flora Natapoff, the garish night lights and visual rhythms of North Station; Richard Sheehan, the soft atmospherics of the Dorchester shoreline and

gas storage tanks; Susan Belton, the stark emptiness of suburban lawns and parking lots; Michelle Boll, the lonely, harshly lit spectacle of empty structures, and Joel Janowitz, the black shadows and towering forms of a midnight urban vista. Lynn Margileth renders familiar landmarks with a burst of energetic color and brushstroke.

A grittier side of the urban experience surfaces in Perry Barton's crude and oversized subway car, David Moore's muscular studies of the lines and thrusts of the Dover Street MBTA station, and Peter Hoss's dark, expressionistic cityscape. Marilyn Pappas's moulded paper collages that incorporate pieces of urban discards, Mags Harries's poetic cast paper, and Karen Moss's studies based on abandoned and littered urban lots all demonstrate a fascination with urban refuse.

Neill Fearnley's drawings are energetic near-abstractions based on precise Back Bay architectural motifs. Richard McKown takes panoramic photographs in small sequential sections.

Smith, Wang honored at AIChE meeting

Professor Kenneth A. Smith, associate provost and vice president for research at MIT, and Professor Daniel I.C. Wang, professor of biochemical engineering in the Department of Nutrition and Food Science, have been honored by the American Institute of Chemical Engineers.

Professor Smith has received the 1981 Professional Progress Award.

Professor Wang has received the 1981 Food, Pharmaceutical and Bioengineering Division Award.

Both awards were presented during the annual meeting of the AIChE November 9-12 in New Orleans.

The Professional Progress Award, which specifically honors chemical engineers under the age of 45, recognizes significant achievements in the theoretical discovery of a chemical engineering principle, the invention or

development of innovative processes, products or equipment, or any other distinguished contribution to the profession. Professor Smith was cited for his diverse, creative and fundamental research in the fields of fluid mechanics and rheology, heat and mass transfer and biological transport. The award, sponsored by Celanese Corp. of America, consists of a certificate and a \$1,000 honorarium.

The Food, Pharmaceutical and Bioengineering Division Award is given to recognize outstanding achievements in the biochemical aspects of the profession. Dr. Wang received it for his work in such diverse areas as bioconversion of renewable resources and computer monitoring and control of biological processes. The award, sponsored by General Goods Corp., consists of a certificate and a \$1,000 honorarium.

R429, Systems Programmer/Analyst, Plasma Fusion Center
R422, Research Scientist-Experimental, Plasma Fusion Center
R409, Theorist/Designer, Plasma Fusion Center
R401, Staff Scientist, National Magnet Lab.
R397, Biomedical Engineer, Dept. of Mechanical Engineering
R396, Research Associate, Aeronautics & Astronautics
R387, Sponsored Research Staff, Group Leader, Plasma Fusion Center
R384, Plasma Physics Experimentalist, Plasma Fusion Center
R376, Research Associate, Energy Lab.
R284, Research Associate, Materials Processing Center
R241, Technical Associate, Biology
R222, Programmer/Analyst, Mechanical Engineering
R137, Research Associate, Materials Science & Engineering

R093, Research Associate, Sloan School of Management
R069, Design Engineer—Superconducting Magnets, Plasma Fusion Center
R039, Sponsored Research Staff, Mechanical Engineering
R006, Research Scientist—Experimental, Plasma Fusion Center
EXEMPT
E088, Registered Nurse, Clinical Research Center
SECRETARY/STAFF ASSISTANT
B1441, Sr. Secretary, Nuclear Engineering
B1438, Sr. Secretary, Energy Laboratory
B1435, Sr. Secretary, Office of Facilities Management
B1431, Sr. Secretary, Office of Secretary of the Institute
B1367, Sr. Secretary, Center for Theoretical Physics
B1312, Sr. Secretary, Information Systems & Law at Sloan

B1430, Sr. Secretary, Laboratory for Nuclear Science
B1409, Sr. Secretary, Resource Development
B1408, Sr. Secretary (24 hrs/wk), Nuclear Reactor Laboratory
B1384, Sr. Secretary, Physics
B1380, Administrative Secretary, Copyright & Licensing Office
B1381, Sr. Secretary—Technical, Mathematics
B1372, Sr. Secretary, Provost's Office
B1377, Secretary, Resource Development
B1367, Sr. Secretary, Center for Theoretical Physics
B1264, Sr. Secretary, Center for Theoretical Physics
B1317, Sr. Secretary, Provost's Office
B1316, Sr. Staff Assistant, Research Laboratory of Electronics
B1313, Sr. Secretary, Humanities
B1306, Sr. Secretary, Industrial Liaison Program
B1303, Sr. Staff Assistant, Center for Policy Alternatives
B1292, Sr. Secretary—Technical, Mathematics
B1277, Sr. Secretary, Political Science

B1260, Sr. Secretary, Physics
B1253, Sr. Secretary, Sloan School
B994, Sr. Secretary, Civil Engineering
TECHNICAL SUPPORT STAFF
B1440, Computer Operator, Haystack Observatory
B1248, Account Representative, Information Processing Services Operation
OFFICE ASSISTANT
B1443, Administrative Assistant, Div. of Comparative Medicine
B1428, Sr. Office Assistant, Lab. of Computer Science
B1423, Office Assistant, Resource Development Office
B1333, Sr. Office Assistant, MIT Press
B1352, Office Assistant, Medical
B1227, Clerical Assistant, Undergraduate Chemistry Office
B1333, Sr. Office Assistant, MIT Press
B1137, Editorial Assistant/Production Assistant, Center for Advanced Engineering Study
SERVICE STAFF
H554, Electronic Technician A, Energy Laboratory

H553, Project Technician (Electronic), Plasma Fusion Center
H550, Technician B (Electro-Mechanical), Research Laboratory of Electronics
H545, Laboratory Aide, Nutrition & Food Science
H559, H560, Patrolman/Patrolwoman, Campus Patrol
H498, Metal Worker, Physical Plant
H480, Technician A (Mechanical), Laboratory for Nuclear Science
H475, Sr. Technician (Electronic), Plasma Fusion Center
H474, Sr. Technician (Electronic), Plasma Fusion Center
H473, Technician A (Electronic), Plasma Fusion Center
H466, Carpenter, Physical Plant
H465, Heat & Vent Mechanic, Physical Plant
H423, HVAC Designer/Draftperson, Physical Plant
H411, Technician A (Radiation Protection), Environmental Medical Services
H278, Technician A (Electronic), Aeronautics & Astronautics