

Energy for the Future

The announcement that President Nixon is considering supporting construction of a number of nuclear breeder reactors met with a warm welcome here.

Professor Manson Benedict, Head of the Department of Nuclear Engineering, hailed last week's White House announcement as "wonderful news. I'm delighted to hear it."

Dr. Benedict, an authority on nuclear power reactors, had just spoken before a meeting in Washington of the National Academy of Sciences about reactors a few days earlier. "A lot of people have urged this program on the administration," he said upon learning of the announcement, "and I'm very glad to see this."

In his speech in Washington Dr. Benedict had said, "At the present rate of electric generation... fast breeder reactors fueled with US uranium resources available at \$100 per pound could provide all our electricity for 64,000 years."

Fast breeder reactors have two principal advantages over the present water-cooled type. They can operate with a much lower grade of uranium fuel and can actually generate their own fuel while providing heat to generate electricity.

Placement Picture

This June's graduates, faced with a tight employment situation, are having a hard time getting jobs, according to Robert Weatherall, Director of the Career Planning and Placement Office. He stresses that although finding a job isn't as easy as it used to be, seniors who look hard enough can almost certainly find one they want.

Many students, instead of going to work in industry, are heading for graduate degrees. Counting the students in five-year programs who will receive master's degrees along with their S.B.'s, about two-thirds of the class of 1971 will probably decide on further education. Among regular four-year bachelor candidates, more than 60 per cent are expected to go to graduate school.

Travel lies ahead for many seniors. If they are going to have a difficult time getting jobs, they apparently consider this a good time to get acquainted with other parts of the country and the world.

The seniors' 1970 predecessors, who also were confronted with a tight job market, chose some unusual alternatives to what might normally be considered appropriate for MIT graduates. One became a policeman in Wellfleet. Another has been playing in a rock and roll band. Among the many who traveled, one reports he has been "sailing freely on the breezes of cosmic change."

Career Planning and Placement has seen several symptoms of the changing employment situation. Five years ago 772 seniors came to the Placement Office for 3,321 interviews. This year 298 seniors in a class of about 700 have come to

talk to recruiters from industry. Not all of the rest are finding jobs on their own.

The rapid fall-off in the number of students who come for interviews has led to a snowball type of effect. The number of companies conducting interviews here has dropped by 35 per cent in the last five years.

According to Mr. Weatherall, today's graduates are having problems because of a combination of two reasons. The downturn in defense and aerospace spending has affected many students in major fields that rely on those sources, while the general recession in the American economy has reduced the job market in other fields. When the economy turns around, Mr. Weatherall submits, so will the job market for holders of bachelor's degrees.

"The situation for Ph.D.'s and Sc.D.'s is distinctly serious, however," adds Mr. Weatherall. "The distressing thing is that the situation in the years ahead may get worse instead of better." While bachelor's degrees in engineering were awarded at a fairly constant rate through the 1960's, about three times as many men and women received doctorates in 1970 as did in 1960.

Many Ph.D.'s go into teaching—26 per cent of 1970 doctorate recipients at MIT did—but there is simply not room enough for all of them in teaching. The most conservative estimates say that 50 per cent more doctorates will be awarded in 1985 than in 1970, while the number needed in teaching will decline.

More and more holders of doctorate degrees are going into industry. But many Ph.D. experts in highly specialized technological fields are not really prepared to do general work in industry, and the need for specialists is not increasing fast enough.

Expanded Service

Audio Visual Service has always been the place to go for projectors and projectionists. In recent years it has expanded to offer both a wider variety of equipment and specialized service for unusual needs.

Audio Visual's principal task is still supplying slide and film projectors and operators to classes, student groups and professional societies around the Institute. It offers almost every type of sophisticated projecting device as well as stereo and video tape recorders and equipment. For many years Audio Visual provided equipment and operators free of charge to academic users, but last July the great demand for such services and steadily rising costs made necessary a new policy of charging all users.

Audio Visual often receives requests for help in unusual or special problems. Two new types of reference guide units now being tested in the engineering library are the result of a joint project of Audio Visual and Project Intrex. The units provide audio



A student operates the new sound-slide reference guide in the Barker Library. Photo by Margo Foote.

descriptions of how reference systems work while the listener either sees examples on a slide projector or follows the explanation in a sample catalog.

Another special project is a closed-circuit television system in the infirmary which allows nurses there to see visitors as they enter the building. Audio Visual also tape records course lectures for blind students, who can then replay the tapes to catch references to black board examples or visual experiments.

Audio Visual is looking for ways to further expand its service to the community. The recent closed-circuit re-telecast of Bruins playoff games was one more attempt to tell people that Audio Visual is not just a place to rent projectors.

"A Housing Program in Cambridge" Progresses

Two important milestones in MIT's Housing Program in Cambridge have been reached during the past two weeks.

MIT was one of several organizations which proposed to develop housing for the elderly in Cambridge. Two weeks ago, the Cambridge Housing Authority (CHA) selected MIT's proposal and recommended it for approval by the U.S. Department of Housing and Urban Development (HUD). MIT's proposal, submitted under the federal Turnkey program, offered to develop 684 units: 199 on Clarendon Avenue, 304 on Gore Street and 181 on Hamilton Street.

Following the CHA recommendation, required negotiations took place between MIT and HUD. Upon conclusion of these negotiations last week, the CHA informed MIT that all three parties had agreed to a final price. What this agreement means is that HUD will execute with the CHA an annual contributions contract which assures the CHA necessary funding to purchase the completed units from MIT.

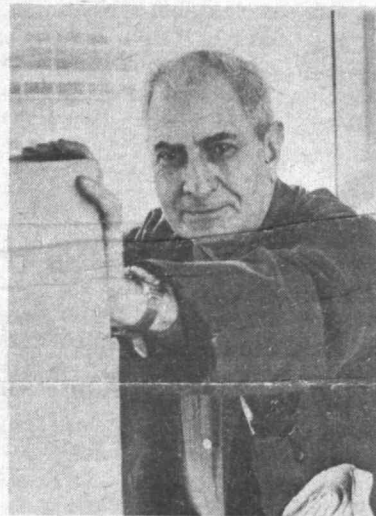
The next step in the procedure is for MIT, as the non-profit, developer, to prepare final working drawings and specifications for the housing. Then a contract of sale will be signed by the three parties and construction can begin.

"Hi, Mike!"

When you walk around the Institute with Mike Arena, you immediately become famous by association. Everybody stops to say hello.

Mike's day as a Physical Plant employee begins at 7am with a two-hour shift at the front desk at 77 Mass. Ave., answering telephone requests for information. After that he's on the go until 3:30, cleaning the blackboard minutes before a 6.02 lecture in 10-250, delivering a message on Vassar St., moving a storage box of keys to classrooms and offices across campus, or finding a blackboard for somebody who needs one.

Mike's territory is the main complex. It's a bit frantic trying to



Mike Arena pushes a massive box of keys. Photo by Margo Foote.

keep up with him. He practically sprints the ten miles or so that he covers each day.

Mike Arena is one of those people behind the scenes who keep MIT going. He's been here for 25 years. Although he would never admit it, he is something of a legend. His instant identity and the appreciation people have for his services prove it.

Young Alumni to be Elected to Corporation

The names of 14 young alumni have been submitted to members of the Classes of 1969, '70 and '71, who will select five to be candidates for a new category of membership on the Corporation to be called Representatives from Recent Classes.

The 14 nominees were chosen from a field of 447 by a special screening committee composed of the five youngest available members of the Corporation. A ballot is now being circulated by the Alumni Association which will tally the results and submit the names of the five top candidates to the Corporation Membership Committee for presentation and election to the Corporation at its regular meeting in June.

The nominees are:

Gregory K. Arenson, '71, economics.

Karen Wattel Arenson, '70, economics.

John B. L. Harkness, Ph.D. '71, chemistry.

Peter Q. Harris, '69, life sciences. Randolph G. Hawthorne, '71, management.

James A. Hester, '65, aeronautical engineering, Ph.D. '70, city planning.

Christina Huk Jansen, '63, Ph.D. '71, metallurgy.

Robert G. McGregor, '70, mechanical engineering.

Mark A. Rockoff, '69, life sciences.

Alan F. Sanford, '69, architecture. Michael V. Sawyer, '71, pure mathematics and physics.

Laurence Storch, '69, unspecified, S.M. '71, civil engineering.

Michael R. Terry, '62, mechanical engineering, N.E. '69, naval construction.

Pamela T. Whitman, '70, humanities and science.

The Corporation voted to form this new category of membership at its meeting in March in order to place greater emphasis on the perspective of recent student experience. For several years the Corporation has been active in broadening the base of its membership.

Representatives from Recent Classes will normally be elected for five year terms. However, to stagger the terms, only one of this year's nominees will be elected for five years. The others will be chosen for four, three, two and one year terms. Beginning in 1972, only one candidate will be elected each year.

Federal Funding

By Robert M. Byers

Two federal reports on annual government spending for research—reports that appear to conflict as regards MIT—have been in the news recently.

One is the Department of Defense's annual listing of the 500 top research, development, test and evaluation (RDT&E) contractors for the previous fiscal year, in this case FY70 which began July 1, 1969.

DOD shows that MIT received \$94 million for research from DOD in FY70. That placed MIT first among universities and non-profit institutions and 16th among all contractors in DOD research funding.

The second report is from the National Science Foundation. NSF gathers and compiles and publishes an annual report showing all federal support to universities, colleges and non-profit institutions.

Because NSF must canvass all federal agencies for the data, the NSF report lags by one full year. Thus the latest is for FY69, not FY70.

Nevertheless, according to NSF, total federal funding at MIT from all government agencies was \$97 million for FY69. Again, MIT is listed first.

News media tend to report the lists separately and seldom make comparisons.

If you choose to compare, however, you may conclude that

MIT receives only about \$93 million from non-DOD agencies. And anyone at MIT should recognize that non-DOD support must be higher than that—considerably higher. Resolution of the conflict, however, can be found by looking carefully at differences in the two lists.

In a nutshell, DOD counts everything—campus, Draper Lab, Lincoln Lab—while NSF excludes Lincoln, primarily because of the way in which NSF classifies Lincoln.

Draper Laboratory works under a host of project-centered contracts, each dealing with a specific area of activity and each entered into directly with the sponsoring agency. Draper FY70 volume was about \$50 million, including \$28 million from DOD agencies (Army, Navy, Air Force, DOD itself) and the rest from non-defense agencies, primarily NASA for Apollo work.

In contrast, Lincoln volume for FY70 was about \$64 million, virtually all supplied under the single contract with the Air Force through which Lincoln has traditionally worked (one reason why NSF classifies Lincoln differently from Draper). New work begins and old work is completed by adding and removing work statements to the single contract.

This contracting difference—single contract vs. multiple contracts—leads NSF to classify Lincoln as what it calls a Federally Funded Research and Development Center (FFRDC), of which there are many in the nation. (DOD calls these FCRCs for Federal Contract Research Centers.)

In computing all federal support, NSF excludes FFRDCs from totals attributed to universities, even though FFRDCs are, in general, operated by universities. NSF lists FFRDC spending elsewhere in its report.

Thus it is that the \$50.6 million which NSF reports for the University of California at Berkeley for FY69—ranking Berkeley ninth on the list which MIT heads—does not include \$179 million for the Lawrence Radiation Laboratory or \$114 million for the Los Alamos Scientific Laboratory, both FFRDCs. Nor does the California Institute of Technology's ranking as 46th on the list with \$20.5 million reflect \$156 million for Caltech's Jet Propulsion Laboratory, another FFRDC.

If you choose to exclude both Draper and Lincoln, you will find that MIT's \$49 million in federal funds for campus research places the Institute 11th on NSF's university—behind Harvard (\$69.5 million), Michigan (\$61.4 million), Washington (\$56.3 million), UCLA (\$53.1 million), Columbia (\$52.3 million), Wisconsin (\$51.7 million), Stanford (\$51.5 million, which excludes the Stanford Linear Accelerator, an FFRDC), UC-Berkeley (\$50.6 million) and Minnesota (\$50.1 million).

If, on the other hand, you choose to add in Draper and Lincoln—and apply the same rule to everyone else's FFRDC-like operations—MIT ranks third, behind UCal and

Caltech and ahead of the University of Chicago (Argonne National Laboratory) and Johns Hopkins University (Applied Physics Laboratory).

MIT's total campus volume for FY70 as reported by the treasurer, was \$103 million and \$57 million of this was for departmental and interdepartmental research. Of the research volume, \$8 million came from private sources, \$49 million from federal agencies. Of the \$49 million, \$16 million came from DOD agencies, \$8.6 million from the Atomic Energy Commission, \$8.1 million from the National Institutes of Health, \$6.5 million from the National Aeronautics and Space Administration, \$6.4 million from the National Science Foundation and \$3.6 million from other federal agencies.

(A recent survey of on-campus research expenditures by MIT's own Analytical Studies Groups, by the way, showed that 20 pct. during FY70 was spent on research in biology, health and nutrition and another 10 pct. went for research in urban and environmental research, irrespective of sponsoring agencies.)

Copies of the DOD and NSF reports are at the Reference Desk in the Humanities Library. The NSF report is available for \$1 from the Superintendent of Documents, U. S. Government Printing Office, Washington, D. C. DOD reports can be obtained from the Directorate for Information Operations, Office of the Assistant Secretary of Defense (Comptroller), Department of Defense, Washington, D.C.

Class of '71 Gift

The killing of four students at Kent State University a year ago left a deep impression on many college campuses across the nation. As its departing gift the Class of '71 is hoping to establish an Annual Kent State Memorial Lecture, in recognition of the impact of the Ohio tragedy.

The senior class proposes an important lecture or debate take place each year, to keep the channels of communication open on pressing problems ranging from pollution to international affairs. Because the establishment of a lecture fund requires a large initial investment, the Class of '71 is asking for help from the Institute Community. Contributions may be sent to the Kent State Memorial Fund, Room E19-437.

Reports Available

These items are now available in the Information Office (Room 7-111):

A commentary on the prospects for humanities at MIT by John Burchard Dean Emeritus of Humanities and Social Science, submitted to MIT Commission,

A very limited number of copies of a report from the Technical Information Program (TIP) on "MIT Research Projects Related to Environmental Quality,"

"A View of Undergraduate Education at MIT," written by the Student Committee on Educational

Policy and originally published in *Thursday*,

The Independent Activity Period Evaluation Committee's final report on IAP.

In addition the office posts news clippings, excerpts from the news wire services and releases from the News Office.

Copies of the proposal on the Concourse Experiment on educational reforms for the first two years of undergraduate education, are available from Professor Louis Bucciarelli, Room 33-315.

Flying Club

They don't gad about in Lear Jets, but of the 35 members of the MIT Flying Club 22 do spend time in the air.

Membership is open to employees, faculty members, staff members, and students, as well as students at Wellesley and Harvard. Members fly small Cessnas and other planes from Hanscom Field in Bedford for a total of about 100 hours a month. Flying members also can improve their skills with a school approved by the Federal Aviation Agency. Frequently members fly to various places on Cape Cod. A few summers ago one group flew all the way to California.

The non-flying members don't share the privileges at Hanscom Field, of course, but do come to the club's meetings. The meetings are held the second Wednesday of each month during the school year at 7:30 p.m. in Room 491 in the



Donald Kenton, graduate student, flies a Cherokee 140 over the countryside. Photo by Margo Foote.

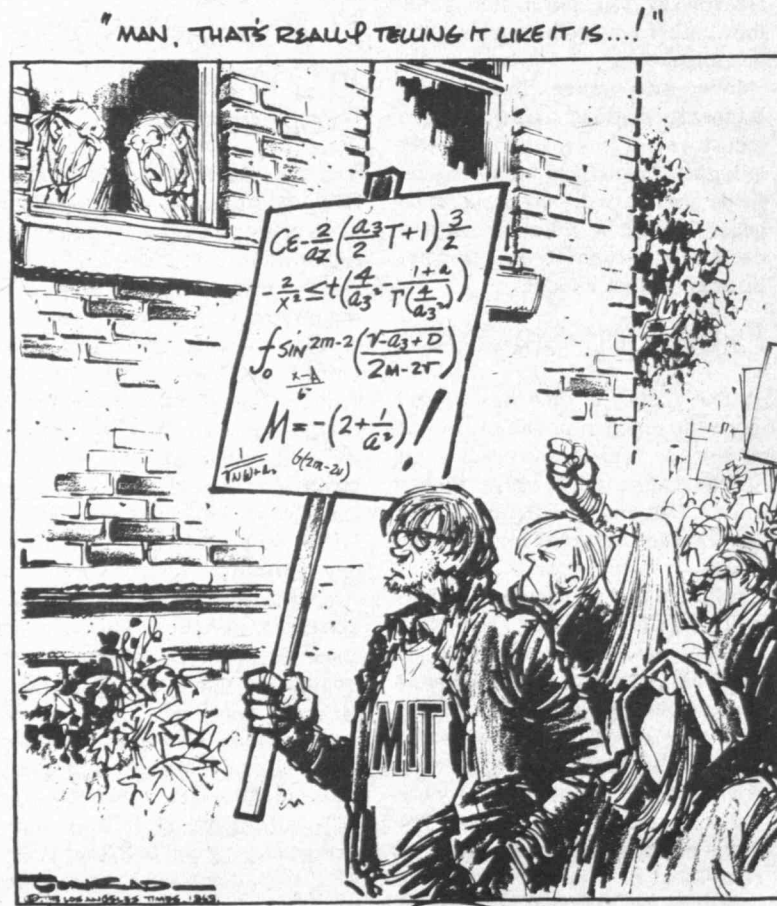
Student Center. This group also includes MIT alumni. Past club meetings have featured talks by such guests as Professor Sheila Widnall of Aeronautics and Astronautics and several films and slide shows.

For further information about the Flying Club, call Bill Mack, Ext. 2207.

New from the MIT Press

Automation and Alienation
Jon M. Shepard
\$7.95 (hardcover)

Office and factory automation need not lead to alienation of the workers there. Computers and other machines may even have a favorable impact on the people working with them.



Los Angeles Times cartoonist Paul Conrad, whose view of events at M.I.T. in November of 1969 (above) became locally famous, has given President Howard Johnson the original 17x24 drawing, with a personal inscription from the artist, as a memento of Mr. Johnson's presidency. Mr. Conrad transmitted the gift through the

M.I.T. Club of Southern California which made the presentation when Mr. Johnson spoke there recently. The drawing now hangs on the president's office wall. Mr. Conrad won the Pulitzer Prize for the second time this week.

Events of Special Interest

RAIN
New MIT Literary Magazine.
On sale from 10 am - 5 pm, May 3 - 7, Building 10 Lobby.
25 cents.

Spring Dames Craft Sale+
Friday, May 7, 8 am - 4 pm.
Building 10 Lobby.

Kaleidoscope+
A day of wonderfulness.
Friday, May 7, 3 pm - 12 midnight.
Kresge Plaza.

Movement Laboratory Dance Company+
Presented by the Department of Humanities.
Friday, May 7, 8 pm. Kresge Auditorium.
Free admission.

MIT Silver Club Buffet Luncheon+++
25th Anniversary.
Paul V. Cusick, Vice President, Business and Fiscal Relations, will speak.
Saturday, May 8, 12 noon.
Student Center, Mezzanine Lounge.

Class of 1971 Party++
Saturday, May 8, 6 pm.
Student Center, Sala de Puerto Rico.
Free to class members. 50 cents for others at the door.

MIT Club of Boston Luncheon Meeting
Thursday, May 13, 12:15 pm.
Aquarium Restaurant, 100 Atlantic Avenue.
\$3.25.

Seminars and Lectures

Wednesday, May 5

Fracture Mechanics Approach to Life Time Prediction of Turbine Materials+
Dr. Clifford Wells, Materials Development Lab, Pratt and Whitney Aircraft Co., Middleboro, Connecticut. Department of Aeronautics and Astronautics Lecture.
1 pm. Room 33-419.

Pulsar Measurement of the Density of the Extended Solar Corona+
Professor C.C. Counselman, III, Department of Earth and Planetary Science. Earth and Planetary Science Seminar.
4 pm. Room 54-100. Tea, 3:30 pm. Room 54-923.

Thursday, May 6

Teaching Anthropology with Film: the Netsilik Eskimos+
Asen Balikei, University of Montreal.
ERC Colloquium.
12 noon. Room E21.

Sonar Detection of Ultrasonic Lesions+
Gary Matison, Graduate Student, Department of Electrical Engineering. EPL Colloquium.
12 noon. Room 3-446.

Why High-Voltage Electron Microscopy?
Dr. Mircea Fotino, MIT and University of Colorado. Electron Optics Seminar.
3 pm. Room 26-217.

Exciton Migration in Photosynthetic Units
Professor Elliot Montroll, University of Rochester. A.D. Little Lecture Department of Chemistry.
3 pm. Room 4-370.

Fluid Dynamics of Drag (Parts 1 and 2)+
Fluid Mechanics Film
4 pm. Room 3-270.

Upward Bound Colloquium+
with Wellesley and MIT Upward Bound.
4 pm. Room 37-252.

Spermatozoan Motility+
William J. Shack, Department of Mechanical Engineering. Applied Mechanics Seminar.
4 pm. Room 5-134. Coffee, 3:30 pm. Room 1-114.

How Cryogenics Can Improve Our Power Systems
Professor Herbert H. Woodson, Department of Electrical Engineering. Physics Colloquium.
4:30 pm. Room 26-100. Tea, 4 pm. Room 26-110.

Friday, May 7

Microporous Reverse Osmosis Membranes
S.M. Nemer, Graduate Student, Department of Chemical Engineering. 10.992 Seminar.
2 pm. Room 24-121.

Diffusion with Reversible Chemical Reaction
P. Stroeve, Graduate Student, Department of Chemical Engineering. 10.992 Seminar.

Network Models of Electrons in Crystals and Complex Molecules
Professor Elliot Montroll, University of Rochester. A.D. Little Lecture Department of Chemistry.

Flows with Surface Tension Gradients
David Kenning, Department of Mechanical Engineering. Mechanical Engineering Department Seminar.
3 pm. Room 3-270. Coffee, 4 pm. Room 1-114.

May 6
through
May 13, 1971

Send notices for the week of May 13 through 20 to Mrs. Alice Tripp, Calendar Editor, Room 5-122. Extension 1766, by noon on Friday, May 7.

Why There Will Probably Never Be a Room Temperature Superconductor+
Dr. P.W. Anderson, Bell Telephone Labs and Cambridge University. Denter for Materials Science and Engineering.
4pm. Bush Room, 1-105. Coffee, 3:30 pm, Bush Room.

Computer Application in Intensive Care+ +++++
Alfred P. Morgan, M.D., Peter Bent Brigham Hospital and Harvard Medical School. Nutrition and Food Science Seminar.
4:30 pm. Room 16-134. Coffee, 4:15 pm.

Monday, May 10

The Effect of Gibbs Adsorption on Marangoni Instability+
Professor P.L.T. Brian, Department of Chemical Engineering. Chemical Engineering Seminar.
11 am. Room 9-150.

Quantitative Aspects of Social Behavior
Professor Elliot Montroll, University of Rochester. A.D. Little Lecture Department of Chemistry.
3 pm. Room 4-370.

Decontamination of Radioactive Ion Exchange Resins Using Neutral Salt Solutions as Elutants
J. Baron, Graduate Student, Department of Nuclear Engineering.
Nuclear Power Management
P. Deaton, Graduate Student, Department of Nuclear Engineering.
Plutonium Recycle in Pressurized Water Reactors
H. Spierling, Graduate Student, Department of Nuclear Engineering. 22.912 Doctoral Seminar.
3 pm. Room NW12-222.

Magnetohydrodynamics
Rarefied Gas Dynamics
Fluid Mechanics Films
4 pm. Room 3-270.

Oscillatory Instability of Finite Amplitude Convection+
Dr. F.H. Busse, University of California at Los Angeles. Applied Mathematics Colloquium
4 pm, Room 2-390. Tea, 3:30 pm, Room 2-290.

Current Structural Studies on Molecular Changes during Construction and Relaxation+
Dr. Hugh Huxley, MRC Laboratory of Molecular Biology, Cambridge, England. Department of Biology Mayer Lecture in Life Sciences.
4:30 pm. Room 54-100.

Tuesday, May 11

Fault Effects on Superconducting Generators+
Dave Luck, Graduate Student, Department of Electrical Engineering. EPL Colloquium.
12 noon. Room 3-446.

Scientific Language and Poetic Language: 30 Oppositions
Professor Solomon Marcus, Department of Mathematics, University of Toronto. Department of Linguistics Colloquium.
3:30 pm. Room 20E-017.

Extended Precedents, Bounded Right Context, and Deterministic Languages+
Susan Graham, Courant Institute, New York University. Project MAC Seminar.
3:30 pm. 545 Tech Square, Fifth Floor Conference Room. Coffee, 3 pm.

Information Structure in Decentralized Control Systems+
Y. C. Ho, Gordon McKay Professor of Engineering and Mathematics, Harvard University. Department of Aeronautics and Astronautics Seminar.
4 pm. Room 35-225. Coffee, 3:30 pm, Room 33-206.

The Earth's Core: Speculations on Its Composition and Chemical Equilibrium with the Mantle+
Dr. Robin Brett, NASA-MSC. Earth and Planetary Sciences Colloquium.
4pm. Room 54-100. Tea, 3:30 pm. Room 54-923.

Some Fundamental Properties of Minimax and Conflicting Control Problems+
Professor Jack Warga, Department of Mathematics, Northeastern University. Decision and Control Sciences Group Seminar.
4 pm. Room 37-212.

An Introduction to Metal-Matrix Composites+
Professor Michael B. Bever, Department of Metallurgy and Materials Science, Physical Metallurgy Seminar.
4 pm. Room 13-5101.

Numerical Calculation of Propeller Characteristics
Professor D. Cummings, Department of Naval Architecture and Marine Engineering. NAME Seminar.
4pm. Room 5-234. Coffee, 3:30 pm, Room 5-134.

Poetry Workshop
For information call Lucy Hoague, x5383.
5 pm. Room 20C-105.

Women's Liberation in Perspective+
Roberta Benjamin, Sylvia Chaplain, Barbara Hazilla, Sue Jhirad and Harriet Silver. Open Forum on Human Ecology.
Seminar 8 pm, Room 7-345. Supper 6 pm, Room 7-345.

Wednesday, May 12

Fatigue and Fracture Control in Model 747 Structural Design
Mr. Max M. Spencer, Group Leader, Model 747, Commercial Airplane Division, Structural Technology, The Boeing Company. Department of Aeronautics and Astronautics Lecture.
1 pm. Room 33-419.

Minerology and Petrology of Some Apollo 12 Igneous Rocks with Emphasis on the Oxidation-Reduction Conditions during Crystallization+
Dr. Robin Brett, NASA-MSC. Earth and Planetary Sciences Colloquium.
2 pm. Room 54-100. Tea, 3:30 pm. Room 54-923.

Random Vibration of Point-Driven Strings and Plates +
Larry E. Wittig, Department of Mechanical Engineering. Doctoral Thesis Presentation.
3 pm. Room 3-133.

The Facilitated Transport of CO₂ in Bicarbonate Solutions+
Professor John A. Quinn, University of Pennsylvania. Departments of Chemistry, Chemical Engineering, Nutrition and Food Science Enzyme Seminar.
3 pm. Room 26-222.

Transformation and Somatopy in Perceiving Systems+
Professor Michael A. Arbib, University of Massachusetts. Communication Theory Seminar. Department of Electrical Engineering.
3:30 pm. Room 26-302. Coffee, 3 pm. Room 26-217.

The High-Temperature Gas-Cooled Reactor+ +++++
Mr. Corwin L. Rickard, Advanced Reactor Division, Gulf General Atomic Company. Nuclear Engineering Department Seminar.
3:30 pm. Room NW12-222.

Chemistry in the Search for Therapeutics++
Max Tishler, Wesleyan University. Phi Lambda Upsilon Chemistry Seminar.
8 pm. Room 4-370.

Thursday, May 13

Children and Television: Lessons from Sesame Street+
Professor Gerald Lesser, Laboratory of Human Development, Harvard University. ERC Colloquium.
12 noon. Bush Room, 10-105.

Tree Manipulation Systems and Church-Rosser Theorems+
Barry Rosen, Harvard University. Project MAC Seminar in Computer Science.
3:30 pm. 545 Tech Square, Fifth Floor Conference Room. Coffee, 3 pm.

Fluid Dynamics of Drag (Parts 3 and 4) +
Fluid Mechanics Film
4 pm. Room 3-270.

Regulation of Cholesterol Metabolism in Man+
Dr. Edward H. Ahrens, Jr., Rockefeller University. Departmental Seminar for Nutrition.
4:14 pm. Room 54-100. Coffee, 4 pm.

Rabbi Bruce Goldman will speak on Radical Judaism at the second seminar in the Morris Burg Memorial Seminar Series sponsored by MIT Hillel.
7:30 pm. McCormick Green Living Room.

Student Meetings

Freshman Council++
Meeting.
Wednesday, May 5, 8:30 pm. Student Center, Room 400.

International Students Council++
Meeting
Thursday, May 6, 4:30 pm. Walker Memorial, Room 201.

THURSDAY++
Meeting.
Thursday, May 6, 8 pm. Walker Memorial, Room 201.

TECHNIQUE++
Photo Staff Meeting.
Saturday, May 8, 11 am. Student Center, Room 457.

TECH ENGINEERING NEWS++
Weekly Staff Meeting.
Sunday, May 9, 5 pm. Student Center, Room 453.

ERGO++
Meeting.
Sunday, May 9, 5 pm. Student Center, Room 443.

Student Information Processing Board++
Meeting.
Monday, May 10, 7 pm. Room 39-585.
For additional information call x7788.

MIT Hillel Graduate Discussion Group+
Jeff Gordon will discuss American policy in the Middle East.
Monday, May 10, 8 pm. Student Center, Room 441.

Freshman Council++
Meeting.
Wednesday, May 12, 8:30 pm. Student Center, Room 400.

MIT Club Notes

Baker House SPAZ Jogging Club++
Jogging around BU and Harvard Bridges.
Daily, 10:45 pm. Baker House, Second Floor West.

MIT Student Art Association+
Exhibition and sale of student art work.
May 5, 6, 7, 11 am - 6 pm. Student Center, Second Floor Reading Lounge.

Outing Club+
May 6 and 10, 5 pm. Student Center, Room 473.

Nautical Association++
Basic Sailing Shore School.
Repeated every Thursday and Monday through the spring, 5:15 p.m. MIT Sailing Pavilion.

Wellesley-MIT Young Democrats+
Charles McCarthy, independent candidate for US Senator, will speak.
Thursday, May 7, 7:30 p.m. MIT Lounge, Snyder Center.

Israeli Club+
Lecture with A. Palgi.
Thursday, May 7, 7:30 pm. Student Center, Room 473.

Judo Club++
May 7, 10, 12, 5 pm.
May 8, 1 pm. duPont Gym Exercise Room.

Science Fiction Society+
Friday, May 7, 5 pm. C.E. Lounge, Room 1-223

Friday Afternoon Club+
Friday, May 7, 5:30 pm. Ashdown House, Games Room.
Men \$1, women free.

Pot Luck Coffee House+
May 7 and 8, 8:30 pm. Student Center, Mezzanine Lounge.

Model Rocket Society+
Boston area rocket firing. For details call Trip Barker, x3161.
Saturday, May 8, 9:30 am. State Correctional Institution at Bridgewater.

Bridge Club+++
Saturday, May 8, 1 pm. Student Center, Room 491.

Tech Model Railroad Club++
Saturday, May 8, 4 pm. Room 20E-210.

Sangam+
Film: "Sajan," with Asha Parekh and Manoj Kumar, in color with English subtitles.
Sunday, May 9, 3:30 pm. Room 26-100.

Baha'i Discussion Group+
Monday, May 10, 8 pm. McCormick.

Classical Guitar Society++
Tuesday, May 11, 5 pm. Room 1-132.

MIT-DL Duplicate Bridge Club++
Tuesday, May 11, 6 pm. Walker Memorial, Blue Room.

Fencing Club++
Tuesday, May 11, 7 pm. duPont Fencing Room.

Math Club+
Wednesday, May 12, 7 pm. Room 2-290.

Flying Club++
Wednesday, May 12, 7:30 pm. Student Center, Room 491.

Scuba Club++
Joe Kuchta, MIT Safety Office will speak on artificial respiration and then there will be a film "The Pulse of Life."
Wednesday, May 12, 8 pm. Room 20E-017.

Rocket Research Society+
Wednesday, May 12, 8 pm. Room 2-025.

Movies

The Molly Maguires ++
Lecture Series Committee
Friday, May 7, 7 and 9:45 p.m. Room 26-100.
50 cents.

The Bird with the Crystal Plumage ++
Lecture Series Committee
Saturday, May 8, 7 and 9:30 pm. Room 26-100.
50 cents.

While the City Sleeps +
MIT Film Society
Monday, May 10, 8 and 10 pm. Room 10-250. \$1

MIT Film Department +
Showing of a film by Jean Luc Godard and Leacock-Pennebaker. D. A. Pennebaker in person for discussion after film.
Monday, May 10, 8:30 pm. Kresge Auditorium.
\$1.50

Music

Felsenstein Opera Film Festival +
Presented by the MIT Department of Humanities.
"Tales of Hoffman." Offenbach; and excerpts of "Fidelio." Beethoven.
"Tales" Wednesday, May 5, 8 pm. Room 26-100.

"Fidelio" Sunday, May 9, 8 pm. Room 26-100.
Students \$1; Others \$3. Tickets at the door or 14N-233b.

Thursday Noon Hour Concert +
May 6, 12:10 pm. MIT Chapel. Free admission.

Mozart, "C Minor Mass" and Hayden, "Te Deum" +
Presented by the MIT Glee Club and the Wellesley College Choir. Jane Bryden, soprano; D'Anna Fortunata, mezzo-soprano; David Dusing, tenor; Daniel Erton, bass; and members of the MIT Symphony Orchestra, Klaus Liepmann conducting.
Sunday, May 9, 3 pm. Kresge Auditorium. Free to MIT community, tickets in Building 10 Lobby. Others, \$1 at the door.

Mixed Chorus ++
Practice
Monday, May 10, 7:30 pm. McCormick Music Room.

Stravinsky, "Suite Italienne;" Brahms, "Sonata in G Major, Op. 78;" and Beethoven, Sonata in C Minor, Op. 30, No. 2."
The MIT Department of Humanities presents a recital of violin and piano sonatas with Evelyn Zuckerman Siegel, piano, and Sherry Kloss, violin.
Monday, May 10, 8:30 pm. Kresge Little Theatre. Free admission.

Theatre and Shows

"The Wedding" by Bertolt Brecht +
"O'Flaherty, V.C." by George Bernard Shaw.
An evening of one act plays presented by the MIT Dramashop. Critique and coffee hour following performances.
May 7 and 8, 8:30 pm. Kresge Little Theatre. Free admission.

The New University Conference will present a play.+
Saturday, May 8, 7:30 pm. Student Center, Sala de Puerto Rico.

"In the Beginning Genesis for Now" +
Presented by the Educational Studies Program Players.
Sunday, May 9, 7:30 pm. MIT Chapel. Free admission.

Dance

Modern Dance Classes++
Intermediate-Advanced
Thursday, May 6, 5:30 pm. McCormick Gym. Students free, community \$2.

Balkan Dancing+
MIT Folk Dance Club.
Thursday, May 6, 7:30 pm. Student Center, Room 407.

Dance Development Class++
May 7, 10, 12, 5:15 pm. McCormick Gym.

International Folk Dancing+
MIT Folk Dance Club.
Sunday, May 9, 7:30 pm. Student Center, Sala de Puerto Rico.

Folk Dancing+
MIT Folk Dance Club.
Sunday, May 9, 7:30 pm. Student Center, Sala de Puerto Rico.

Israeli Folk Dancing+
MIT Folk Dance Club.
Tuesday, May 11, 7:30 pm. duPont Gym, T-Cub Lounge.

Square Dance Club+
Tuesday, May 11, 8 pm. Student Center, Room 407.

Exhibitions

New Washington Painting+
Tim Corkery, Sam Gilliam, Sheila Isham, Ed McGowin, Enid Sanford. Sponsored by the MIT Committee on the Visual Arts.
Monday - Thursday, 10 am. - 5 pm. Friday, 10 am. - 9 pm. Saturday, Sunday, holidays, 1 - 5 pm. Hayden Gallery through May 25.

Steamboat Design+
Details of Robert Fulton's steamboat "North River" and other early American steamboats. Hart Nautical Museum, Building 5, first floor. Continuing through June.

Deep-Ocean Mining+
Material from Sea Grant Project Office. Hart Nautical Museum, Building 5, first floor. Continuing through June.

Main Corridor exhibitions+
Presented by students and departments. Buildings 7, 3, 4, 8.

Athletics

Varsity Lacrosse+
Harvard
Wednesday, May 5, 4 pm. Briggs Field.

Varsity and Freshman Tennis+
Brown
Wednesday, May 5, 4 pm. Briggs Field.

Varsity Baseball+
Northeastern
Thursday, May 6, 4 pm. Briggs Field.

Rugby Club++
Practice
Thursday, May 6, and Tuesday, May 11, 5 pm. Briggs Field.

Varsity Baseball+
Bates
Friday, May 7, 4 pm. Briggs Field

Intramural Sailing++
Sailing Regatta. Teams will consist of four members, two skippers and two crew. Anyone eligible for IM sports may participate. A trophy will be awarded the champions. Saturday and Sunday, May 8 and 9, 10 am. Sailing Pavilion.

Track+
Tufts
Saturday, May 8, 12:30 pm. Briggs Field.

Rugby Club+
Holy Cross
Saturday, May 8. First sides, 1:30 pm. Second sides, 3 pm. West end, Briggs Field.

Junior Varsity-Freshman Baseball+
Emerson
Saturday, May 8, 2 pm. Briggs Field.

Junior Varsity-Freshman Lacrosse+
Lawrence Academy
Saturday, May 8, 2 pm. Briggs Field.

Junior Varsity-Freshman Lacrosse+
Phillips Exeter
Wednesday, May 12, 3:15 pm. Briggs Field.

There is no admission charge for athletic events.

Religious Services and Activities

Observance of Lag ba-Omer+
Sponsored by the Hillel Society. Traditional campfire festivities, "symbolic" draft card burning, (in the historical sign of Holiday and its relationship to contemporary realities in the U. S.) Speakers.
Thursday, May 13, 12 noon. Student Center Plaza.

Christian Bible Study Group
Thursday, May 6, 12:15 pm. Room 20B-031. For details please contact Professor Schimmel, x6739.

Islamic Society
Prayers.
Friday, May 7, 12 noon. Kresge Rehearsal Room B.

Vedanta Services
Friday, May 7, 5:15 pm. MIT Chapel.

Vedanta Discussion Hour
Friday, May 7, 6 pm. Ashdown House.

MIT Hillel
Religious Service.
Friday, May 7, 7:30 pm. MIT Chapel.
Saturday, May 8, 9:30 am. MIT Chapel.

Hillel Brunch++
Sunday, May 9, 11 am. Student Center, Mezzanine Lounge.

Christian Worship Service
Sunday, May 9, 11 am. MIT Chapel.

Roman Catholic Masses
May 6, 8, and 11, 5:05 pm. MIT Chapel. May 10 (Sunday), 9:15 am, 12:15 pm, 5:05 pm. MIT Chapel.

Christians Meet for Dinner
Tuesday, May 11, 6 pm. Ashdown House Cafeteria.

Christian Science Organization
Tuesday, May 11, 7:15 am. John Chipman Room, 8-314.

Society of the Latter Day Saints
Wednesday, May 12, 8 am. Student Center, Room 473.

The Chapel is open for private meditation from 7:30 am to 11 pm every day.

Coming Events

Rosencrantz and Guildenstern are Dead+
Presented by the MIT Community Players.
May 14, 15, 19, 20, 21, 22, 8:30 pm, May 16, 2:30 pm. Kresge Little Theatre. \$2.50. For information call x4720.

Don't Forget

Caps and gowns may now be ordered at the Customer Service Department at the Tech Coop. Also available are the new inexpensive "econocloth" gowns which may be rented or purchased and taken with you. (Bachelor's, Master's, Doctorate).

Class of '72 yearbook portraits will be taken in the Technique Office (Student Center, Room 457), until May 11. For more information call x2980.

+ Open to the Public
++ Open to the MIT Community Only
+++ Open to Members Only
++++ Freshmen interested in departmental program encouraged to attend.

CLASSIFIED ADS

Ads may be telephoned to Ext. 2707 or mailed to Room 5-122. Ads must include full name and extension or room number. Ads are limited to one per person per issue and may not be repeated in successive issues. The ad deadline is 5pm, Wednesday.

For Sale, etc.

Braided rug 9 x 12, gd cond, best offer. Art, x4472.

Men's 10" Wellington boots by Knapp, sz 12D; men's blk military reg boots, sz 13, best offer. Brian, x5650.
Man's bicycle, 3 spd, \$25; Citation typwrtr, \$45; neon lamp, \$5. Olivier Renard, x5323.

Expensive curled frosted wig, worn approx 5 times, \$15. Beverly, x6014.

AKC miniature schnauzers, 2 fem, 1 male, \$200 ea, ready 5-31. Ethel Vokey, x358 Linc or 667-7994.

Tape, 2 track stndrd 7" reel, 2 hrs, instru music (rock + jazz), gd background music, best offer. x1923.

Furn: bes, armchrs, DR set, cabinets, TV, washer, etc. - moving. Jacques or Nicole, 643-3369.

Encyc Britannica, 1969, hardly used, w-bkcase, \$250. Peter, x584 Draper 7.

Kittens (2), 6 wks old, tigers, hsbroken. Kevin Gilbert, x1835.

Telephone answering mach, ans + takes messages, exc cond. Call 868-4468.

Old dentist's chr \$5; hrdryer \$10; 2 burner htplate \$10; manual typwrtr \$20; Polaroid Swinger \$5; etc. Rick, x1631.

Upright piano, gd cond, gd tone, \$150. Call 491-7179.

AR stereo amp, exc cond, \$120. Claire Kramsch, x6343 or 354-2164.

Royal stndrd typwrtr, fine cond, \$40. x6962 or 862-9462.

Two 1 gal cans Sears best ext wht paint, oil base, one coat, both for \$12. Call 643-9666 after 7 pm.

Used, sz 10 1/2, man's Raichle ski boots, fair cond, \$10. x2396.

Movie equip (8mm), exc cond. Michael, x7785 Linc.

Mod BR set, yr old, 6 pc plus queen sz Beauty Rest bx spring + matt, orig \$850, w/ sell \$400 or best. Call 491-6559.

SCM port elec typwrtr, 12" carr, \$80. Tom, x2338.

AKC Samoyed pups, grandsire US champion. King, 694-2692, Chatham, NH.

Friendly, loveable Siamese sealpt kittens, male + fem, w-shots, \$25 ea. Evelyn, x7652 Linc.

English cadillac type carriage; folding bby carriage; net playpen + pad; wdn playpen; jumper chr; highchr; maternity clothes sz 14-16. Call 862-6966.

Misc hshld furn, v gd cond. Liz, x2151.

Polaroid 230 Land camera, color pack w-flash, used only few times, \$50 or best. x7267 or 492-2826 evgs.

Elco 3200 FM stereo tuner, under warr, \$100. Marty, x2332 or 472-7054 evgs.

Spring, it's wonderful - free kittens. Craig Work, x570 Draper 7.

Platinum blond wig, nvr worn, \$40 new, best offer. Peggy, x3311.

Labrador Ret pups, champ sire, yellows + blacks. Mike, x3909 or 646-1901.

Admir 27" TV; 7hp outboard motor, best offer. Call x3485 or 395-7265.

Free: adorable kittens. Ron, x7864 or 625-1991 evgs.

AR4X spkrs, 2 1/2 yrs onguar, perf cond, \$70-pr. D. Tong, x1569 or 324-0769 evgs.

RCA port stereo, \$130 new, now best offer. Call 492-4572 evgs.

Lots of bricks + boards. Call 868-5549.

Bolex H16 16 mm movie camera, 400 ft magazine, motor, 25, 50 + 75 mm lens, tripod, \$425. Marion Grogan, 666-0217.

Gerbils (2) v nice, w-cage, nd home. Madeleine, x2210.

Gas stove 40", gd cond, \$30. Call 484-9591.

Prof Santa Claus, avail yr round. Jim Lopez, x443 Linc or 372-5295 (Haverhill).

Leica M1 w-Eleitz range finder, 3 lens: Summaron 35 mm, Elmar 50 mm, Sola 90 mm, + asst filters, \$225 or best. Call 749-0688 or 383-0798.

Miranda: Sensorex, f-1.8, 50 mm; auto, f-3.5, 135 mm; auto, f-2.8, 28 mm, total price \$240. Kai Ming Chan, x2926.

Funky + kooky clothes straight from the 30's; bby, toddler, children + maternity clothes;

carbed; highchr; youthchr; Sesame St hand puppets. Call 484-5357.

Roberts 770X stereo tape rcrdr, cross field heads, sound w-sound, contains own amps, exc cond, orig case + shipping carton, new \$360, asking \$150. Don Olson, x2139 or 389-8054 after 3 pm.

Grand piano, Gildemeester + Kroeger, NY. R. Verdier, x1779.

Nikkormat FT body, exc cond, best offer. x5069 or 492-5022 evgs.

Tiger kitten, 8 wks old, nds home. Call 846-2754 evgs.

GE stereo phonograph + rcrd stand \$20; twm bed \$15. Dave, 491-1445 evgs.

Bench, 16" tall, 6' long, \$15; old wrking GE TV, \$15. Call 547-8098.

Pr woman's iceskates, sz 8, used twice, \$7. Sandy, x2833.

End tbls (2), for parlor. Call 924-7914 evgs.

Sony 230 stereo tape rcrdr (inc spkrs + amp) \$150 or best offer. Chico, x3261 (Rm 303), (am or evgs).

Old fash beige cast iron stove. Call 527-6696 at 7 pm.

Sony TC 540 stereo tape rcrdr, 4 spkrs, 3 spds, 20w, list \$399, w/ sacrifice at \$275. Call 864-7952.

Marantz 26 AM-FM rcvr, 18w-per ch, \$180. Mark Davis, x7779, or 889-1742.

Classical guitar + case, mint cond, \$175. Call 523-0481 after 7 pm.

Jerry back pack bbycarrier, \$17 new, hardly used, \$10. Call x5793.

Colorado Blue Spruce, dig your own in Acton, 2-7, \$3 - \$12. Paul, x3996 or 897-9152.

Garage sale May 9: single beds w-matt, \$16 ea; night stand \$5; K tbl \$8; chrs; end tbls; lamps; hutch; mixer; irons, clothes (sz 8-10); artwork; etc - v cheap - moving. Call 646-5928 for address.

Elec bass case, br new, orig \$60, asking \$35. H. Bessler, 494-2771.

Tire + whl, 6.50x13, \$5. Tom, 547-3315 evgs.

Vehicles

'62 Ford Falcon sta wgn, exc mech cond, recond eng, roof rack, R + H, trailer hitch, \$350. Call x5857 or 862-4707 evgs.

'63 Buick LeSabre, \$150. Call 864-7820 evgs.

'64 Internat Travelall, has sticker but nds wrk, \$100. x5384 Linc.

'64 Corvair Spyder, gd mech cond, supercharged eng, 4 spd, full instru, \$100 or best. Bill, x7487.

'64 Dodge, 6 cyl, runs well, gd body, auto, 6 tires, \$212. Charlie, x7174.

'65 BMW, 1800TI, best offer over \$900. Call 321-2711.

'65 Chevy II, 6 cyl, 2 dr, stndrd, R + H, snows, 34K, exc cond, \$600. x582 Draper 7 or 729-3569.

'65 VW sqback, 40K, exc cond, AM-FM, snows, \$785. Call 899-6034 evgs.

'66 Jeep Wgner, 4 whl dr, hubs, pwr st, R + H, trailer hitch, 2 stud snows on spare whls, 42K, gd op cond, John Kessler, x225 Linc or 876-0078 evgs.

'66 Pontiac Tempest, 4 dr, 6 cyl, auto, 50K, gd cond, \$725. Jack, x7521.

'66 VW sedan, gd cond, w-sticker, gd tires, \$500. x356 Linc.

'66 VW sqback, manual 60K, exc cond, \$1200. Call 861-9445 evgs.

'67 Simca 1000 GLS, 4 spd, new tires + brks, \$350. Call 924-8393 evgs.

'67 Buick LeSabre, 4 dr, vinyl roof, factory air cond, pwr windows, new frnt end, shocks, brks, exhaust, 50K, \$1550. Don, x7398.

'67 Buick Special, stndrd, pwr st, exc cond, 48K, \$875. x6743 or 277-0439.

'67 Mustang, V-8, auto, pwr st, 32K, \$1300 or best offer. Bob, x1859.

'67 Fiat Spyder conv, runs well, has roll bar, R, 27K, 35mpg, \$950. Rick, x3264 or 247-8124.

'68 Chevy II, 6 cyl, pwr st + brks, v gd running cond, 2 gd snows, vinyl int, \$1100. x4600.

'68 Bonnevl conv, all power, built-in stereo, new tires, gd mech cond, best offer. Call 646-4539.

'68 Triumph Spitfire Mk III, exc cond, 27K, xtras, \$1200. Call 666-2918.

'68 Chevy Impala Custom Coupe, 1 owner, V-8, auto, vinyl roof, perf cond, \$1600. Geroge Collins, x5577.

'68 Opel Rallye, 102 hp eng, full instru, lk new, \$1000. Mary, x6468.

'69 Buick Riviera, 2 dr hrdtop, all power, exc cond, best offer. Sonia, 924-8031 evgs.

'69 Chevy Nova II, hrdtop, exc cond, snows on xtra whls, \$1695. J. Gross, x5144.

'69 AMX, 4 spd, 343 cu in, pwr st + disc brks, showrm cond, \$2150. Call 272-3569 evgs.

'71 Chevy Vega coupe, br new, 5K, total guar, pwr glide, AM push button, \$2200. Santos, 923-8850.

'66 Yamaha YMI 305 cc, Big Bear mod, exc cond, \$400. John or Frank, 625-6188.

'68 Gemini sailboat, Herreshoff designed class boat, 16' fibergls planing daysailer, roller reefing positive flotation, lk new, custom cover, trailer, asking \$1475. Paul, x7104 Linc.

Housing

Apt, 1BR, exc cond, newly painted, avail 6-1, \$140-mo. Jane, x4487.

Park Dr at Beacon, 2BR apt, dish + disp, ww carpet, many xtras, 5-1, \$300. Marilyn, x7602.

Camb apt, avail 6-1, 1BR, LR, K, furn, \$185 inc ht, water, gas + elec. Call 547-8569.

Camb apt betw Harv + Cent Sq, 2BR, air cond, balcony, dish + disp, 2B, avail 6-1, \$270-mo. Call 491-6559.

Camb, lrg 2BR apt, LR, DR, 2 porches, 1st fl, 2 fam house, avail 5-1, \$220-mo, betw Concord + Garden St. Hans Harms, x7822 or 491-0303.

Watertown, lrg 3 rm apt in nicely kept home, tile B, mod K, complete redecor, prking, no pets, furn, all util, \$165-mo. Call 924-9128.

Summer rms, 6-1 - 8-27, common K, loc close to MIT, nr BU bridge in Camb, singl \$125, dbl \$75 per person, \$25 deposit. Don, 354-9016.

Apt sublet, 10 min walk to Harv Sq, 6-1 - 9-1, 2 BR, K, LR, porch, \$215 inc ht + furn, option to renew. Gayle Barrett, x6466.

Summer sublet nr MIT, 6-1 - 9-1, \$51-mo. John, 868-8693.

Furn apt, summer sublet to share w-2 rmmates, 10 min walk to MIT, frplace, backyrd, study, 2LR, K, own BR, prking, \$90-mo inc util, (w/ negotiate). x525 Draper 7 or 354-8090.

Arl sublet, 6-1, new 1 BR, B, kitchenette, LR, air cond, ww carpet, prking, \$185. Call 646-5671 evgs.

Back Bay sublet, lrg 1 BR apt, avail 6-1, lease renewable in Sept. Call x5939.

Back Bay sublet, 6-1 or sooner, studio on Beacon St, eat-in K, mod B, lrg closet, no hassel landlord, \$150-mo. Polly, 523-8650 days.

Beacon Hill summer sublet, June, July, furn, 2 BR, LR w-study, DR. Call 523-6732 evgs.

Boston sublet nr Fenway, studio w-K, unfurn, June-Aug w-option for Sept, \$130-mo. Suzanne, x7837 or 868-9011 evgs.

Boston apt sublet, 6-1, 1BR, complete renovation, nr Northeastern U, \$135-mo; would lk to sell all furn. Linda, x2391 or 262-4309 evgs.

Boston apt sublet, Marlborough St, top fl, avail 6-1, 1BR, furn, elevator, 10 min to MIT, \$185-mo. Leon, x4811 or 266-1089.

Brighton apt sublet, June-Aug, exc loc, on T line, close to BU + BC, lrg 1BR, \$185-mo, w/ rent furn avail. Mary, x3584 or 731-6143 evgs.

Brookline sublet, July + Aug, lrg 2BR, furn, \$195-mo; optional -nd Sept roommate. x2253 or 566-6071 evgs.

Brookline, Beacon St, sublet, apt for 1 or 2 people, nr T, 2 1/2 rms, \$150-mo. Kevin Phillips, x1638 or 731-5355 evgs.

Brookline house avail June thru Labor Day, 10 rms, nr T, nominal rent in exchange for care of house + lawn. Call 731-5137.

Camb apt sublet, 6-1 - 9-1, furn, 4BR, LR, ww carpet, \$280-mo. Call 868-8331.

Camb sublet, w-option to renew, avail 6-1, Harv Sq, 2BR, \$175-mo, mature persons. Call 491-7428.

Camb sublet, June-Aug, 1010 Mass Ave, furn, LR, BR, K, \$165-mo. Jim Hoburg or Don Dudley, x3619 or 354-7315.

Camb, nr Porter Sq, furn house for July + Aug, LR, DR, K, 4BR, 1 1/2 B, garden, \$400-mo. Call 491-0844.

Lrg sunny rm for rent in Cent Sq area apt, Inman St, avail 6-1 - 9-1, close to MIT + Harv, \$70-mo. Greg, 547-1408.

Cent Sq apt sublet, 2BR, LR, K, air cond, dishwshr, furn, 3 yrs old. Bill Mayhew, x7787 or 354-8543.

Dedham, townhouse sublet, 'til Oct w-option.

2BR, 2B, lr w-din area, lrg K, 3/4 basement, \$235 w/ haggle. x7140 Linc or 326-3144 evgs.

Dorchester apt sublet, 1BR, mod, w-option to renew lease, avail 6-15. Linda, x4270 or 282-7042 evgs.

Eastgate summer sublet, 2BR, furn, 2-3 mos, July-Sept. Miriam, x7768.

Lincoln furn house for rent, avail 8-1-71 - 8-1-72, exc schools, quiet, residential area, v nice loc. Call 259-9345 pm or evgs.

Princeton campus, 1 yr apt sublet, furn, adults. Write: N.W. Strovink, Hibben apt 1-R, Princeton, NJ 08540 or Bill Strovink, x4706 or 396-3428.

Westgate apt sublet, 1BR, facing river, furn, June, July + Aug, \$150-mo. Call 354-4933.

Bedford, 3BR ranch, 1 1/2 B, lrg 2 car gar, fam rm, 3/4 acre wd lot, quiet neighborhd, v low 40's, Call 275-6295.

Natick, 12 rm house for sale, 1 yr old, lrg lot, 5BR, nr Mass Pike, \$54,500. Sandy, x6345.

Waltham-Warrendale, ranch cape, 6 rms, frplace, LR, DR, K, 3BR, tiled B, screened porch, 2 car gar, corner lot, exc loc, low 30's, x2136.

House lot in Woburn, approx 1/2 acre, all betterments, \$7500. Call 933-3884.

Bridgeton, Me, chalet on 14 acres of forest + mts for rent, overlooking 9 Mile Moose Pond, priv, peaceful atmos, sleeps 10-12, K, sundeck, LR, 2B, 4BR, all util inc, \$135-wk by mo or seas. Call 358-7884, Wayland.

Summer rental, 5 mi n of Franconia, mod lodge, 5 acres w-superb mt view, 2 BR, playrm-dorm, 1B, 20x24 LR-DR, sundeck, frplace, nr lakes, avail June, July, Aug, wk, mo, or seas. x6673 or 729-7646 evgs.

Freedom, NH, sum cott, avail June-Aug, nr sev lakes + mt country, 2 hrs from Boston. x2276 or 245-6632.

Lk Maranacook, Me, vac cott, lrg priv sandy beach, ideal for children, 10 min drive to golf, tennis, shops, avail June + Aug. Thomas King, x3987.

Nr N Conway, NH, Moose Pond, Me, 12BR house, sleeps 20, swim, fish, ride, tennis, golf, mo, wk, wkend rental. Mrs. O'Brien, x3468.

Lk Winnepesaukee, summer rental, 3-4BR, lakefrnt vac home, sundeck, priv beach + dock, rent by wk or mo. Call 729-8227 evgs.

Lk Winnepesaukee, summer rental, 3-BR house, w-many xtras. Call 277-8605 evgs.

Wanted

Interested students to advise Tech Coop in improving selec of tech paperbacks. Call x57 Coop.

Housecleaner, 1 day per wk, MIT prof, bachelor apt, Cent Sq area, perm yr round wrk. x2908 or 876-2768.

Vac home for 80 lb, 2 yr old, spayed fem Newfndnd, exuberant, loves children, pays rent, 5-27 - 6-10. Prof. Walter, x6757.

Fem rmmate to share apt in Belm-Arl-Lex area; or rm w-K priv in same vic. x7057.

Photographs taken during International Night at MIT, 2-26, w/ pay. Mrs. Henckels, 547-7419.

Male or fem rmmate to share 3BR apt in N Camb-Somervl, reas rent, gd people, quiet area, 6-1 - 8-31. Amy, x2823 or 625-9484 evgs.

Outboard motor, 60-65 hp, cash or cash plus trade 45 hp Mercury. Call 734-7641 evgs or wkend.

Canoe, 13 or 14 ft, figerbergls or alum, under \$150; also rack to fit VW bug. Sally, x4275.

Copy to borrow of RCA Receiving Tube Manual 1951-55, pref earlier yrs, looking for PA schematic w-fol tube lineup: 5U4; 312AU7; 16AS7. Phil, x56112 Linc.

Used roll-away cot. Ron, x6288.

Used Henredon campaign style desk. Fred, x5362 Linc.

Projector, 8mm for 8mm + super 8, also screen. Bill Gumes, x5551 Linc.

Men's 3 spd English bicycle. x6326.

Home in Lex, older property pref, 4BR, 2B, 2 car gar, or rm to build, priced in 40's. McCorison, x7465 Linc.

Elec drill, w/ pay. David, 547-5573.

Frplace equip, esp screen. Call 484-0789.

Miscellaneous

Would lk to sublet Westgate or pref Eastgate, singl or efficiency for summer. Susan Godsell, x2054.

W/ do any typing, esp tech. Linda, x6214 or Karen, 237-1066.

W/ do drafting & tech illustrating. Ron, x7273

Food Co-op Lex-Linc & vic, fresh veg & fruit, nd more fam to join. x7465 Linc or 861-8155 evgs.

Lost and Found

Lost: blk key case w-5 keys. Rich, 267-8591.

Here and There

--Dr. Harriett L. Hardy recently received the first Alice B. Hamilton Award "for her unswerving devotion to workmen's health and safety." The award was voted by the Labor Union Advisory Committee, representing 30 unions, and presented at a meeting on Occupational Health Hazards for Trade Union Representatives in New York City. Dr. Hardy is Assistant Director of the Medical Department in charge of the Environmental Medical Service.

--The Institute has received a \$50,000 grant from the General Electric Foundation to assist overall work in the fields of electrical engineering, electronics and information systems. A total of \$32,500 will support graduate research in systems engineering, materials and process engineering, physics, chemistry and business management.

--MIT's Phi Beta Kappa chapter is in the process of identifying members of the community who were elected to the society at other institutions and are thus eligible for membership in the Institute's new chapter. Department heads and supervisors are urged to forward names of eligible persons to Dean Sanborn C. Brown, Room 3-134.

--Tech Talk regrets omitting Dr. Irving H. London from the list of those elected to the National Academy of Sciences in last week's issue. Dr. London is a professor of biology and director