

TECH TALK TECH TALK TECH TALK TECH TALK

MASSACHUSETTS INSTITUTE OF TECHNOLOGY

April 8, 1971

MIT MENAGERIE

There are a lot more animals at MIT than there are people.

During an average year some 62,000 animals make their homes in our research laboratories. Included in our menagerie are frogs, lizards, chicks, ducklings, rats, mice, squirrels, rabbits, guinea pigs, cats, dogs, monkeys, pigs, sheep and an occasional goat.

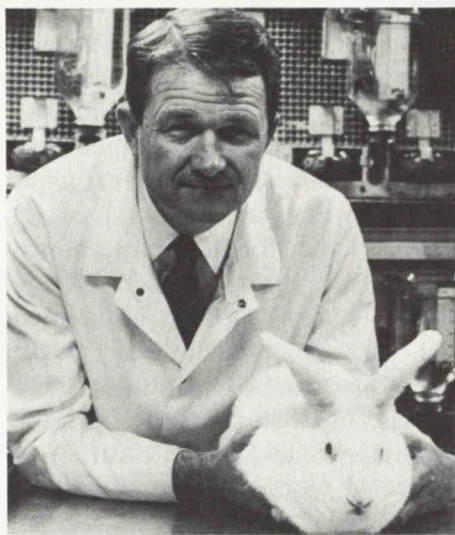
About two thirds of the animals are used for research in the Department of Nutrition and Food Science. The other third belong to the Departments of Biology and Psychology and the interdepartmental Research Laboratory of Electronics.

MIT buys all of its laboratory animals from breeding labs throughout the country. This assures pure genetic strains, uniform inbreeding and good health—all important factors in the outcome of experiments.

A special shipment of African desert rats recently arrived on campus. These small hamster-like rats are especially desirable because of their long life span. They can live under lab conditions for at least six years, while the common lab rat lives only three years.

Dr. Paul M. Newberne and his staff of veterinarians and nutritional pathologists are in charge of the Department of Nutrition and Food Science's Animal Laboratory, located in the Ford Building. They use animals in a broad spectrum of experiments, with an emphasis on the nutritional problems related to learning and behavior.

Chicks, for example, serve as subjects in studies on congenital ab-



Dr. Newberne and friend in one of the Animal Labs.

--Photo by Margaret Foote.

normalities, viral infections and exposure to toxic chemicals. Rats with vitamin B₁₂ deficiencies help researchers understand central nervous system disorders and the development of congenital deformities. Rabbits can demonstrate effects of exposure to immunizations, while guinea pigs are excellent subjects for studying brain function and bacterial infections. Dogs, on the other hand, show the effects of obesity on the response to infection—imagine an overweight beagle! Cats are used a great deal in psychological experiments, but they are also good subjects for researching the central nervous system and various amino acids, particularly methionine. Present studies involving monkeys are looking into the development of cardiovascular diseases.

Many people believe laboratory animals are subjected to undue pain

and cruelty. This is not true. Dr. Newberne pointed out that all animal laboratories are bound by two federal animal welfare laws. These laws demand careful use of experimental animals and require adequate veterinarian care. Dr. Kenneth M. Goddard of the Medical Department is the full time veterinarian who looks after our animal community.

Occasionally, pets have been taken to the Animal Laboratory for medical help. One recent visitor was Deja Vu, the petite lady alligator who won the Ugliest Man on Campus contest. She was treated for a slight case of "alligator rot."

MIT SELLS ITS INTEREST IN TECHNOLOGY SQUARE

MIT announced Wednesday it is selling its interest in Technology Square to the co-developer, Cabot, Cabot & Forbes Co., making CC&F sole owner of the 10-year-old Cambridge development.

Dr. James R. Killian, Jr., Chairman of the Corporation, and Gerald W. Blakeley, Jr., President of CC&F, in making the joint announcement, said that MIT's original principal goal in entering into the project was to help expand the tax base and job opportunities in Cambridge and that this goal has been met.

"MIT's main objective in entering, in agreement with the City, upon the Technology Square development was to build new taxable property for Cambridge and to create new employment opportunities in the City," Dr. Killian said.

"That goal has been realized. Technology Square is now the fourth

largest source of property taxes in the City of Cambridge. New businesses have been attracted to the City, and the work force in Technology Square numbers about 2,000.

"As an educational institution, however, MIT is not in the business of continuing such real estate developments. Thus, the time has come for MIT to withdraw from this investment. It does so with the assurance of CC&F that the development will continue as planned."

Mr. Blakeley said CC&F will carry out all original and present plans for the full development of Technology Square beyond its present levels. The change in ownership, he said, will not affect in any way either the present uses and management of the property or the plans for its further development.

"CC&F has been a partner in the formulating of plans for Technology Square and has had the responsibility as developer for carrying out those plans from the beginning of the project. We intend to carry through on those plans in every way, and there will be no change in the purpose of development," Mr. Blakeley said.

Dr. Killian said MIT was highly gratified with the success of Technology Square in producing jobs and tax revenue for the City and pleased with its partnership with CC&F in carrying the project to self-sufficiency. With its role in this development completed, the Institute will be better able to see through a development program of comparable benefit to the City on the site formerly occupied by the Simplex Wire and Cable Company.

When Simplex moved out of Cambridge to a new location in Maine, MIT acquired its Cambridge industrial site with the expectation of eventually developing the site into a modern complex of housing and business yielding more taxes to the City and more job opportunities than before.

MIT has already embarked on a program of helping Cambridge enlarge and expand the amount of housing available in the City for families of all incomes. This "Housing Program in Cambridge" has the

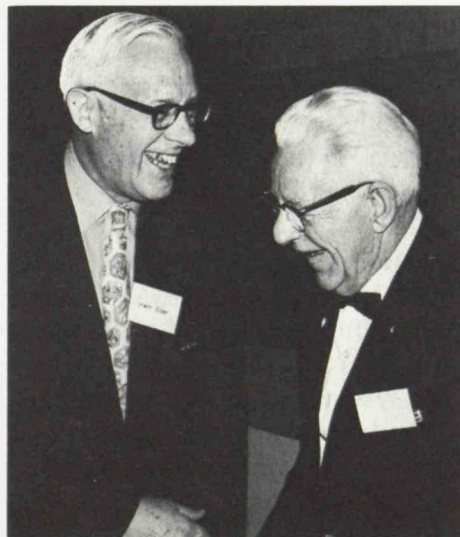
potential of developing some 1,600 to 1,700 new units of housing—about half for low-income families and the elderly—on five different sites in various sections of the City.

Technology Square, located adjacent to MIT on a 14-acre site bounded by Main and Portland Streets and Broadway near Kendall Square in East Cambridge, presently includes more than 550,000 square feet of floor space in four buildings. Two more buildings are presently being planned. The Technology Square master plan calls for an eventual one million square feet of floor space on the site.

The Technology Square project was started about a decade ago. It is believed to be the first time an academic institution had joined with a private developer in creating a modern office and research center facility. Land for the project was assembled in two parcels—one through purchase of an antiquated soap factory, which had closed down, and the other through the purchase of an adjacent site from the Cambridge Redevelopment Authority which had acquired the property for urban renewal purposes.

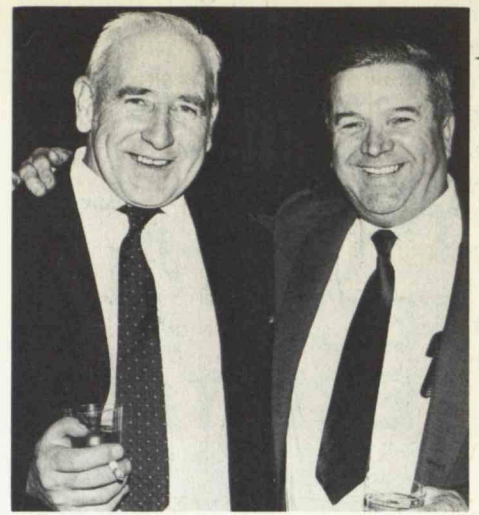
All together, the land and buildings that were located on the total site before development yielded the City of Cambridge annual property taxes of approximately \$86,000. By 1970, Technology Square itself was paying more than \$580,000 in property taxes.

QUARTER CENTURY BANQUET



Dean Irwin Sizer and Nick Carter.

--Photo by Margaret Foote.



Jack Farrington and Babe Paglierani of Lincoln.

--Photo by Margaret Foote.

After 25 years at MIT, a male employee, staff member or faculty member is eligible for membership in the Quarter Century Club. At the club's annual banquet last Thursday night (April 1) in Walker, 170 men were initiated.

Nearly all of the club's 275 members attended. Former Institute President Julius Stratton was a surprise visitor at the 5 p.m. cocktail hour. Charter member Nick Carter was emcee at the dinner.

This was the first year faculty members have been admitted to the club. President Robert Radocchia welcomed the new members. Later President Howard Johnson spoke informally and presented each new member with his certificate and gold membership pin. Each new man also received a chair embossed with the MIT seal.

The Quarter Century Club disregards its members' titles and positions. Thus a few of the new members were introduced as Mike Arena, Fred Ennis, Jack Farrington, Jim Killian, and Jerry Wiesner.

BOWLING

Gutter-ballers of the Institute, unite! You have nothing to lose except 45 cents.

While students on the floors above study, drink coffee, play pinball, and publish a newspaper, duffers and pros alike ply their skills on the eight bowling lanes in the basement of the Student Center. Games are 45 cents and shoes are

free—prices much lower than those at commercial establishments.

Bowling is a refreshing break during study time, and an inexpensive way to spend Saturday night with a date. And there are six pool tables next door where hustlers can try their talents.

The bowling lanes and pool tables are for everyone in the MIT community with identification.

MIT'S SANTA CLAUS



James Lopez in his favorite role.

--Tech Talk Photo.

While the rest of us have long since put away the Christmas ornaments, James Lopez is still working as Santa Claus.

Lopez, shuttle driver between MIT and the Lincoln Laboratory, has been a year-round Santa Claus for more than 15 years. When he isn't playing the part at Santa's Lookout in Middleton, Lopez makes house calls on children's parties any time of the year. He has a special \$200 costume which he wears without padding over his solid but unchubby frame. His Lincoln Continental bears "St. Nick" license plates.

Lopez-Santa speaks to his young visitors in a soft voice. "Most Santas speak too loudly and ho-ho-ho so much they frighten the younger children," he says. "After all, it's something special between the child and Santa Claus, and it's no one else's concern."

AGENDA ON DAY CARE

Discussions and workshops on day care will take place next week in Room 491 of the Student Center on Monday, Wednesday and Friday, and in Room E52-461 on Tuesday and Thursday. All meetings will be from noon until 1 p.m. and participants are encouraged to bring lunch. Beverages will be provided, as will baby sitting.

Among child care groups represented during the week will be the Governor's Advisory Committee on Child Development, the Massachusetts Early Education Project, the Technology Nursery School, the KLH Development Center, the Tufts University Day Care Center, the Cambridge Day Care Association and the MIT Day Care Advisory Board and Work Group.

PROPOSALS SOUGHT

The MIT Community Service Fund is soliciting new proposals for funding during the summer or for the next academic year. The CSF provides financial assistance to Institute people participating in volunteer community service and action projects.

CSF's review panel focuses particularly on proposals in which grants for equipment, supervision, administration and services can give special leverage to the efforts of MIT volunteers. The Fund also provides seed money for innovative plans. Proposals should be sent to Room 10-205. Deadline for submitting suggestions is May 3. For further information, call Joseph Collins, Exts. 1988 or 5278.

HERE AND THERE

—Nominations are in order for the James N. Murphy Award, which honors an MIT employee for contributions to the community, particularly with regard to students. Nominations should be in the form of short, supporting letters and should be submitted to Dean Robert J. Holden, Room 7-101 by April 23. The award will be presented at a ceremony later in the spring.

—Dr. Gerald L. Wilson has been appointed head of the Electric Power

Systems Engineering Laboratory, effective July 1. He will succeed Professor Herbert H. Woodson who is leaving the Institute to become head of the electrical engineering department at the University of Texas.

—Kaleidoscope '71 is being planned for the evening of Friday, May 7, from 5 p.m. until midnight at Kresge plaza, the Student Center and Briggs Field. It will be similar in format to the multi-media festival held two years ago which included a faculty-student softball game, skits, music and exhibits. Anyone who would like to participate or set up a booth should call Judy Litman in the Student Activities Office, Ext. 3766.

—Professor Carl I. Wunsch of Earth and Planetary Sciences will receive the James B. MacElwane Award from the American Geophysical Union at its annual meeting next week. The award is presented "in recognition of significant contributions to the geophysical sciences by a young scientist of outstanding ability."

—The Massachusetts Society of Certified Public Accountants is offering free tax assistance by telephone. If you need help, call 723-7002 weekday evenings between 6:30 and 8:30. Outside the greater Boston area, dial 1-800-322-7730.

—An original musical tragedy, *Sam Patch, the Greatest Story Ever Told So Far*, written by Michael Wildermuth, '72 with music and lyrics by Wildermuth and Clark Smith, '73, will be presented in a live performance over WTBS (88.1 FM) Saturday (April 10) at 9:30 p.m. The performance will be directed by Paul Schindler, '74.

FOR SALE, ETC.

Heathkit 88w stereo amp, pre amp, AM mono tuner, \$50, John Nelson, 233-0488 evgs.
RCA stereo console w/AM-FM radio, mod walnut cabinet, \$225; 3 pc Hayward Wakefld BR set, cherrywd, mod, \$350. x4917 or 734-4054.
Dynaco stereo 80 pwr amp, \$80; PAT 4 pre amp, \$80; FM 3 tuner, \$70. Jay, x565 Draper 7.
Labrador retriever puppies, AKC, champ stock, fam raised. x174 Linc or 862-2873.
Concord cassette tape rcrdr, w/all options, exc cond, unused. Rich Freedman, x2961 Ash-down House.
Auto Nikkor macro 55mm/f3.5 lens, nvr used, \$125 or best. x5739 Linc or 864-4013 evgs.
Sleeping bag \$10; fondue pot \$5; 5 Swedish crys tumblers \$5; Kodak 828 w/flash \$5; 4 pr lined burlap drapes \$5; "Asian Drama," Myrdal \$5; Cassell's German dict \$5. Peter, x7365 or 491-8932 evgs.
Kenmore deluxe dshwshr, port or built in, less than yr old, perf, still guar, \$180. x7902 or 864-2170 evgs.
Pr man's sz 8, Kasting Futura buckle ski boots, worn once. Ralph, 536-5639.
Stereo rcrv, trntbl (walnut base), spkrs, auto sys shutoff after last rcrd, perf cond, \$220. Call 262-0343 evgs.
Canoe, 18' wdn fibergls, v sturdy. Call 734-6818.
Catamaran boat, aquacat, 12' stndrd, fibergls, gd cond, ready for water, can carry on VW bug w/no rigging, \$350. Hardy Prince, x5528 Linc.
Silver stndrd poodle puppies, AKC. Call 893-1470.
Hshld items, buy sep or make deal for all: kit uten, dishes, slvrware, glasses, etc, \$10; 4 lamps, \$1 ea; snlg bed w/matt, \$6. x5716 or 491-1476 evgs.
Ludwig piano, 52", upright. Call 484-7710.
HT-46 transmitter, \$165. Matt, x4153.
Ludwig drums, 6 pc set, pink champagne, \$325 firm. x3942.
Tires, 7.75x15 Atlas plycon, 100 mi, w/rim, orig \$37, asking \$22; 7.75x15 Cornell, plenty tread, w/rim, \$5. Dave, 323-8472 evgs.
Austrian trail boots, new, sz 8½-9, for Wht Mts. Lou, x1575.
US diver's Calypso regulator, tank w/J valve, quick disconnect back pack, \$125. Call 862-6888.
Mahog BR set, dbl bed, dresser & mirror, chest of drwrs, 2 night tbls, \$125; kit set, formica tbl, 6 chrs, \$75; misc. Lew, x2120 or 698-9431 evgs.
AR 2X spkrs (2), 3 yrs on guar, oiled walnut, \$160 pr; Dyna stereo 70, 35 w/ch pwr amp, 2 yrs old, \$60. M. Silver, x6748 or 492-6378.
Drexel dbl spindle bed, pecan wd w/fruit wd finish, exc cond, complete w/inner sprng matt & bx spring, \$90; (21) sliding alum half-window screens, \$10. Hal, x7859 Linc.
Hideaway sew mach, darns & sews buttons, closed resembles colonial tbl. x5792 or 566-1012.
Boy's Schwinn 20" bike, \$15; girl's 20", \$8. Call 696-3750.
Lambretta scooter, 1968, 200cc, new cond, wht. Call x5372.
Bby carriage; stroller; bassinet; bby & maternity clothes, etc. Call 484-5657.
Chest of drwrs \$28; dbl bed \$20; din tbl & 4 chrs, \$30; dresser \$5; lamp \$5. x5695 or 868-0792.
Pwr lawn mower, Montgomery Ward, 10 yrs old, newly rebuilt Briggs & Stratton eng, asking \$35. Abby, x5755 Linc or 862-4035.
Pr girl's downhill skis, 190 cm. Call 484-5091.
Patriots season's tickets (4). Joel Bergman, x2871.
Bell RT-75, 3 spd tape rcrdr & play back unit, use as PA sys w/external spkr, \$30. Frank, x3453.
Calico cat, named Cheri, beautiful, spayed, shots, nds home, owner leaving country. x2728 or 926-2414 evgs.
Drop leaf tbl, formica top; Singer deluxe sew mach; various hshld items. Call 395-8751.
Quiet-Kool air cond, 5000 BTU, used 2 mos, 3 spd control, adj to any sz window, orig \$160, now \$125. Marcia, x7086.
Red Sarouk Karistan rug, 10x14, w/pad, \$250. Call x6840.
Skis w/Dover step-in bndgs, 195 cm, \$20. Joel, 491-4755 evgs.
Bronze poodles, true apricots, exc mini-breeding, gd lineage, fem, paper trained. Call 284-9213.
Extend your organic harvest, dbl cord frame, glazed w/10 lrg flats, best offer. x7931.
Tektronix 547 Oscilloscope w/1A2 (modified by Tektronix w/FET inputs), mint cond, still under warr. Call 876-5961 evgs.

Rear bicycle basket, lk new, \$5. Call 868-5873 evgs.
Sofa, 2 chrs, end tbls; matt & bx sprng, etc, exc cond, best offer. Marie, x5315 Linc.
Free: 4 beautiful all blk furry kittens, alley variety, Kathy, x5266 or 484-1576.
Skis, wd, 185 cm, v gd cond, w/Dover step-in bndgs; VW tire, exc cond; walnut dresser; sprng air matt; Puritron air freshener; hi-fi equip; make offers. x4626 or 277-7863.
Singer full auto sew mach, br new, orig \$280, now \$200. Margaret or Dulce, x5695.
Stud service blue pt siamese, CFA reg, exc temperament. x6780.
Professional Santa Claus, avail yr round. Jim Lopez, x443 Linc or 372-5295 Haverhill.
Adorable, frisky 5-6 mo old Pekinese puppy, happy w/sml children, has papers, \$50. Sally, x2093 or x6302.
New slide proj, auto timer, remote focus forward & reverse control, many xtras, \$75. Sandy Smith, x2961 or 868-1549.
Hvy duty factory Singer sew mach, \$125. Call 935-4814 6-10 pm.
Crib w/matt, maple, exc cond. Call 484-3360.
Karmann Ghia rear bumper, & part of frnt bmpr. Call 684-0789.
New tires, E78-14 (Corvaire sz), \$20; also snows, \$20. Allan, x1717.
Collapsible bicycle, folds to fit in trunk of car, lk new, best offer. Call 492-5022 evgs.
Elec hairdryers (2), new, one w/elec curlers, \$10 ea; new sml port GE tv, \$50; elec hairbrush, nvr used, \$6; elec manicure set, \$6. Carol, x2093.
Sml Vose bby grand piano w/bench, light mahog, gd cond, \$400, in Needham. Call 444-7383 after 3:30 pm.
Polaroid 230 camera, exc cond, inc flash & portrait attach, \$50. Helen, x5653.
Marquis cut diamond ring (1K), appraised \$900, sell \$500. Mike, x7333.
Snakes for pet-racers, kings, etc, various prices. Mickey, x4387, after 4/12 or 354-5540 late evgs.
Suede coat w/mink collar, sz 10, \$25. Sherri, x7365.
Little kittens (3), 8 wks old, must find gd homes this week. Call 495-4928 days.
Kittens, born 2/5. Call 868-6855.
'61 Karmann Ghia, 40K, gd rubber, gas htr, nds valve job, \$75. Jim, x9805.
'63 MGB, Michelin-X tires, exc cond. x365 Draper 7 or 862-0973.
'64 Peugeot 404 sta wgn. x1785 or 868-0516 evgs.
'65 Ford Comet, 6 cyl, pwr st, auto, R, gd cond, \$500. Mark Katz, x3539.
'65 Ford Falcon, stndrd, 6 cyl, 2 dr, 1 fam car, exc cond, \$500. Debbi, 232-0394 evgs.
'66 Baracuda formula S, 4 spd/fl, positraction, discs. Phil, x5879 Linc.
'66 Buick Skylark Grand Sprt, all xtras, new batt & tune up. Call 846-5084.
'66 Mustang 'conv, pwr st, V-6, gd cond, new tires, new eng, \$400 or best. Chike, 491-0726 evgs.
'66 Rambler Classic, 2 dr, 6 cyl, pwr st, new auto trans, R, new snows, perf cond mech & body, leaving country, \$900. Call 536-9038.
'66 Ford Falcon, 2 dr, stndrd, v clean, body exc, new carb, frnt end, trans, clutch, shocks, 50K, R&H, \$500. Don Doucett, x7333.
'67 Pontiac Tempest, V-8, auto, pwr st & brks, R&H, many new parts, gd tires, body has sev nicks, gd cond, \$695. Dan, x2307 or 254-3096 evgs.
'67 Olds Cutlass, perf cond, snows, etc, \$1200. Michael, x7001.
'67 Cooper S 1275cc, superb cond, sacrifice at \$1400 or best. x7465 Linc or 861-8155 evgs.
'68 Fiat 850 sedan, exc cond, 33K, new clutch, muffler, etc, asking \$650. Chandi, x6938 or 547-8663.
'68 Triumph Spitfire conv, exc cond, 26K. Call 666-2918.
'69 Puch 'cycle, 125cc, 2 cycle, snlg, 200lb lghtwt, 1700 mi, eco operation & maint, exc trans, \$125. Jimmy Lester, x4908, after 3 pm or 245-7781 evgs.
'69 Javelin SST, 390 cid, 4 barrel, 4 spd, pwr st & discs, R, buckets, 9.5K, \$1900. Call 484-5091.
'70 Yamaha 200cc street scrambler, less than 800 mi, garaged, exc cond, \$500. Connie, x2697.
'70 VW sqback, exc cond, complete warr. Claus, x5573 or x5571.
'70 Toyota Corona Mach II, 4 dr sedan, auto, air cond, fully equip, \$2400. x7711.
'70 VW sqback stndrd, AM-FM radio, \$1995. x2593.
'70 VW bus, 15K, exc cond, R. Mark, 492-5645.

Arlington sublet, MIT people only, yr old apt, corner Mass Ave, 2 BR, ww carp, air cond, \$225, all util except elec, avail May 1. Call 646-8709.
Arlington sublet, new 1 BR apt, LR, Knette, air cond, ww carp, prk gar, from 6/1, \$185. Call 646-5671 evgs.
Symphony Rd sublet, mod 1 BR apt, begin 4/15, \$200, inc everything, no snlg undergrads. Rick, x4625.
Brookline apt, 2BR, 5 rm apt, w/outside porch, 2 frplces, unfurn, \$230, inc ht & prk, nr T, avail 5/1. Lee, x6877 or 731-4292 evgs.
Wellesley Hills house for rent, mid June, 5BR, 3 full B, LR w/frplace, formal DR, sml den, disp & dish, lrg yard, nr stores, T, and schools, fam only. Call 235-7436.

WANTED & MISC.

Apt, 1½-2BR, from July 1, one yr lease, w/ pay about \$200 inc ht, in Arl area. Andrew, x6705 or 643-7185 evgs.
Fem rmmate (1 or 2) for Beacon Hill apt, avail 5/1, patio & garden, own rm. x1736.
Efficiency apt below \$130 nr Harv, Sept '71. Call 536-0335.
Canoe for fam of 4, 17' or 18', alum or fibergls preferred. Dick, x2761.
Man's bicycle, up to \$25. Ben, x6339.
Old style gas on gas stove, in gd cond; and lrg machinists vise. Corry, x5783.
Sturdy second-hand stroller. Call 864-0851.
Wl do any typing. x7213.
Dawes, Raleigh or other gd 10 spd bike, 21" frame. Call 527-4843 evgs.
Chain saw, Homelite preferred. C. Jobs, x5519 Linc.
Bysitter, 4-5 afternoons/wk till June, for 3 children (1½, 3, 4) my home or yours. Susan, 391-5303 morn or evg.
Full-time bysitter days, Call 876-1051.
Gd home for big yr old dog, Shepard crossed Doberman. Stephanie, x5479 Linc or 664-5065.
Starving nimble fingered mother of 2 wl do typing. Toni, 547-9299.
Used 3 spd man's bike. Joel Clark, x6948.
Reward for return of blk lthr coat, stolen from Bldg 39, 5th fl, no ques. x7289.
Gimmick rally Apr 18, regis & start betw 10 am & noon, front of Sears Tire Ctr, Burlington Mall (off 128), no more than 2 per car. Info call x593 Draper 7.
V nice fem siamese cat nds home & love. Madeline, x2210.
Wl do non-tech thesis typing. Kathy & Eileen, 599-0644 evgs.
Wl do typing and wl tutor in German, Eng, & elem subj. Ellen, x6633 or 354-8183.
Fem rmmate, own BR, Porter Sq area, \$85. Paula, x4195.
Wl do thesis typing, tech typist, IBM selec w/symbols. Call 876-4744.
Mod, 1 to 2BR apt, vic Cent or Harv Sq, furn, 9/71 - 6/72. Marty, x4178.
Fem student to receive rm & board in exchange for child supervision. x6010.
Bell & Hwl 16mm sound proj. Luis, x5323.
Wl sublease studio or 1BR apt in Westgate or Eastgate, June 1 to Sept 10-15. Frankee Bolger, x1948.
Fem rmmate, renovated apt nr Copley Sq, own rm, \$110. Call 536-1790.
Wicker porch furn, 2 chr, 1 couch. Kathy, x2335.
Girl's 3 spd bike, gd cond. Ruth, x6393.
Apt, 2BR, about \$200/mo, nr T, from 7/1 or 8/1. Bernard Moss, x3707 or 277-7120.
Gift of the most complex piece of junked elec equip you can give, nd for energy dissipation proj. Aase or John, x4882.