

TECH TALK TECH TALK TECH TALK TECH TALK

MASSACHUSETTS INSTITUTE OF TECHNOLOGY

March 25, 1971

TRIBUTES TO KILLIAN

As the retirement of Dr. James R. Killian, Jr., Chairman of the Corporation, approaches, several acknowledgements will be made of his distinguished career.

The Technology Matrons honored Dr. and Mrs. Killian Monday night (March 22) with a formal dinner at the Museum of Science. Mrs. Karl T. Compton led some 300 guests in a toast to the Killians' gallant spirit and long dedication to MIT. Dean Emeritus George Harrison of Science was master of ceremonies for a program of slides and music recalling highlights of the Killians' career. Institute Professor Emeritus Harold "Doc" Edgerton and Truman Gray, Professor of Electrical Engineering provided the music. The dinner followed similar tributes in Dallas, Atlanta, and Mexico City, and will be followed by alumni dinners in New York, Philadelphia, Chicago, and San Francisco.

Besides these dinners, sponsored by alumni groups, the MIT Alumni Center of New York will sponsor a festival of three concerts in New York City. On March 30 the MIT Glee Club and the Voorhees Chapel Choir of Douglass College (the women's division of Rutgers) will perform in Lincoln Center under the direction of Prof. Klaus Liepmann, director of music at MIT. Three weeks later, following the New York Alumni Club's April 19 dinner in Dr. and Mrs. Killian's honor, Professor David Epstein will conduct the MIT Symphony Orchestra in a concert at Carnegie Hall. On May 11 there will



Institute Professor and Mrs. Gyorgy Kepes greet Dr. and Mrs. Killian at the Matrons dinner honoring the Killians. Photo by Bob Lyon.

be a chamber music concert including performances of compositions by Professors Epstein, John Harbison, and Gregory Tucker in Carnegie Recital Hall. Professor Liepmann will conduct.

CAR POOLS

Hate those traffic jams? Or the long wait for the T? A newly formed group at the Institute, the Boston Car Cooperative, may be able to help you lessen commuter frustration. BCC is putting up local ride boards in several locations around the Institute this week.

The first board went up Monday afternoon in the lunchroom of the Ford Building. Others will be installed in the Building 2 lobby, the Information Processing Center and the Sloan Building.

The BCC hopes that the boards will encourage commuters living in the same area to travel to and from MIT in carpools. This will reduce the cost of commuting and the frustration of finding a place to park near the Institute, not to mention cutting down automotive air pollution.

To use the boards, locate your street on the map which is divided into twelve numbered areas. Then fill out a commuter ride board card and hang it on the numbered hook corresponding to the area where you live. Check the other cards on that hook to find a ride or rider that suits your needs. If you don't find what you're looking for, keep checking. To help you, the BCC will match up people from all the boards and call them when a ride or rider is found.

The Boston Car Cooperative is a branch of Ecology Action. The MIT commuter ride boards are being run by Bob Miller, a graduate student in metallurgy and materials science; Jacob Moskowitz, a junior in physics; and Jane Sauer, an administrative assistant for the MIT-Wellesley exchange program and the analytical studies group.



Members of the Quarter Century Club discuss their upcoming banquet over lunch at Walker Memorial. Left to right: Club vice-president-treasurer Frank Bidwell; charter member Nick Carter; secretary Jack Newcomb; and Professor Emeritus Leicester Hamilton of Chemistry, oldest member of the Club. Photo by Bob Lyon.

QUARTER CENTURY CLUB

The Quarter Century Club will celebrate its 21st anniversary next Thursday night (April 1). Corporation Chairman James R. Killian, Jr., will be one of the nearly 170 men initiated into the club at its annual dinner in Walker Memorial. President Howard Johnson will be the principal speaker.

The club is a social organization for male employees, staff, and faculty with 25 years of service. Each year it sponsors a number of activities for its members, including a party for retiring members, a meeting with its female counterpart, the Silver Club, and, for the first time, a picnic.

Each year the Quarter Century Club also sponsors two chartered flights to resort areas, which are open to all members of the MIT community. Last year's flight to Hawaii was a spectacular success. This year the group has scheduled a flight to Majorca.

Until recently the club's membership, formerly limited to hourly-wage employees, hovered around 40. Under the presidency of Robert Radocchia of Walker, however, the club has started admitting salaried employees, staff and faculty over the last three years, thus building a sense of community among the 300 present members. Lately the Personnel Office has assisted by providing names of those eligible each year.

Previously, an interested man had to seek out the club.

Five members of the Quarter Century Club hold a special distinction—they have been at MIT for more than *fifty* years. Among them is Nick Carter, one of the Club's founders and for 54 years a member of the Chemical Engineering Department. This distinction will not be duplicated because of the advent of child-labor laws and compulsory retirement regulations.

NEW PAPER FROM OLD

Every week MIT computer installations spew out several tons of used print-out paper and punch cards. Five young people in the Boston area have set up a small business to recycle this waste, thus making money and doing something about ecological concerns at the same time.

John Madama, a Rutgers graduate, and David Grebow, a graduate student at Tufts, head the group, which picks up computer waste from 14 points around the Institute and several other locations in the Boston area. They sell the waste for \$30 a ton to mills in Maine and New York, which bleach and repulp the used paper and make new paper out of it.

Interest in recycling is increasing across the country. Some 20% of all American paper is of the recycled variety, although during World War II the figure was 60%. Since incineration and land filling are becoming

less attractive, the paper industry is turning to recycling. For example, state and local governments are beginning to take action to curb waste paper. New York recently passed a law requiring 50% of all paper coming into the state must be recycled.

Madama and Grebow, while running a growing small business, also intend to produce educational materials for schools and the general public.

BLOODY GOOD SHOW

For nine days the Sala de Puerto Rico bustled with activity as members of the community rolled up their sleeves to donate blood at this year's Red Cross Blood Drive. Our goal was 2,500 units of blood. Unfortunately, we didn't quite meet that goal, but with a total of 2,346 donations, we beat last year's record of 2,269.

Nearly 400 volunteers devoted time and energy to the Blood Drive. Faculty chairman Professor Anthony French recruited faculty members and employees to solicit donors across the campus. Student charimen A. Warren Lippitt of TCA and Bob Elkin of APO canvassed residence halls and fraternities and supervised a corps of student volunteers who ran the computer program, made last-minute appointments and changes and called donors who failed to arrive on schedule.

The MIT Matrons supplied 250 volunteers to help out at the drive. Besides registering donors, taking temperatures and running the canteen, they soothed nervous donors in need of reassurance. Some Matrons, who are nurses, supplemented the Red Cross nurses in taking medical histories of potential donors.

An interesting sidelight of this year's blood drive is a survey being conducted by Don Levinstone, '72, and several other students. During the drive they investigated what motivates donors to give and now are looking into what motivates people not to give. The information they develop may be useful in future drives.

Since we joined the program following World War II, our people have donated more than 30,000

pints of blood. We hold our campaign at a time when blood reserves in New England are low. Many Boston area hospitals scheduled open-heart surgery during our drive. This year we received and fulfilled three specific requests for A-positive, A-negative and B-positive blood for this purpose. A minimum of twelve pints of fresh blood is necessary for each open-heart operation.

Why didn't we meet our goal? There are many reasons. The Red Cross was running other blood-mobiles at the same time so sometimes there was a shortage of nurses. This frequently caused long delays and we lost about 50 potential donors because they just couldn't wait. Also, about 10% of willing donors were deferred. Another 15 to 20% didn't keep their appointments. However, we did enroll more than 500 first-time donors.

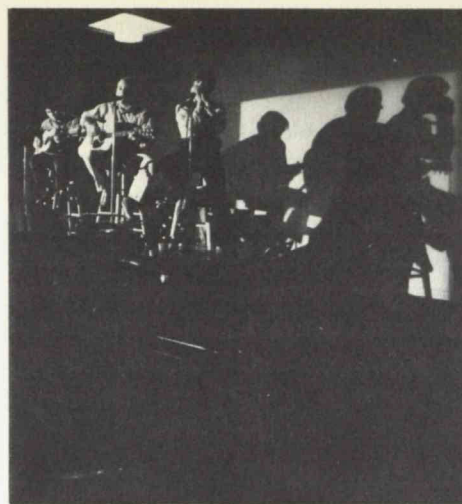
The following statement is a thank you. "The Massachusetts Red Cross Blood Program commends MIT students, faculty, staff and employees for a most successful blood drive. Despite the efforts of the blood drive committee to schedule donors evenly there were times when some donors had a long wait. We are sorry.

"The blood drawing is the largest for MIT and it ranks as one of the largest for any campus drawing in the country. We congratulate you all and thank you in the name of the many people who will receive 'the gift of life'."

PUB CRAWLING

Most of us are more than ready and eager to go home when 5 o'clock rolls around on Friday afternoons. But, if you're willing to stick around, there are some relaxing oases right on the campus.

Leading the list is the Muddy Charles on the first floor of Walker, where good and cheap beer complements lively conversation. Informality is the rule, with a bridge game going on in one corner and a guitarist competing with the stereo system in another. Though sponsored by the Graduate Student Council, the Muddy Charles is for everyone and people from all parts of the Institute



Singers at the Pot Luck Coffeehouse last Friday were, left to right: Dave Fish, '72, Hal Moorman, '71, and John Lange, '73. Photo by Margaret Foote.

gather to share its convivial atmosphere. Hours are 4:30 to 7:30 on Fridays and admission is free.

Ashdown House hosts the Friday Afternoon Club in its games room, where mostly graduate students assemble to wind-down from the week's work. Here, the entertainment is strictly conversation. The Friday Afternoon Club begins dispensing free beer at 5:30. Admission is \$1 for men and free for women.

Later in the evening the Pot Luck Coffee House takes over in the Mezzanine Lounge of the Student Center. Pot Luck offers free coffee or cider and doughnuts with entertainment provided by student musicians and broadcast live over WTBS. Pot Luck operates from 8:30 on, both Friday and Saturday nights. Though it caters mostly to undergraduates, it is open to all members of the community and admission is free.

IT'S OUR BAG

The Institute will soon get a new means of communication—at least as an experiment—*The Bag*. Into *The Bag* will go anything that anyone at MIT would like to communicate: art work, poems, criticism, announcements, news, and, of course, ads. And *The Bag* will be just what it says it is—a bag into which all these various items can be stuffed.

The idea for *The Bag* came from a student-faculty committee which sought to increase communications throughout the Institute. Precise de-

tails of editorial responsibility have yet to be worked out, but the committee is eager to begin the experiment.

Deadline for the submission of material for the first issue is April 9. Written material should be typed on standard 8½ by 11 inch paper. Art work and photographs should be no larger, but any size material which can be folded to fit *The Bag* will be welcome. Send along anything you'd like to see in *The Bag* to Debbie Caplan at the Graduate Student center office, Room 50-110.

CALENDAR JOTTINGS

Dr. Jerome B. Wiesner, provost and president-elect, will appear on NBC's *Today* show next Thursday morning (April 1). The show is aired locally on Channel 4 from 7 to 9 a.m.

There will be a festival of folk music and dance this weekend. The highlight will be Saturday night (March 27) with a performance by the Pennywhistlers, the Mandala Folk Dance Ensemble and the Cambridge Folk Orchestra at 8:30 in Kresge Auditorium. The event is sponsored by the MIT Folk Dance Club and tickets, at \$2.50, may be reserved at the Kresge Ticket Office, Ext. 4720.

FACULTY MEETING

The faculty voted to discontinue the week-long October vacation for 1971-72 at its meeting last Wednesday. The decision applies to the next academic year only. In other business, the faculty proposed that a bachelor's degree in Ocean Engineering be established, heard a report from Dean William F. Pounds of the Sloan School and initiated discussion on creating a separate department of philosophy within the School of Humanities and Social Science. Philosophy is now a section of the Department of Humanities.



Young customer discusses purchase of artichokes with Mr. and Mrs. Doherty in their store at 100 Memorial Drive. Photo by Margaret Foote.

FOR SALE, ETC.

- 2 Alaskan Malamute puppies, non-AKC, 9 wks old. Peter, x584 Draper 7 or 828-5016.
- 4 Big format camera 2 1/4 x 3 3/4 Mamiya, takes roll, sheet & pack film, ground glass, swings & tilts, exc cond, 1/3 off orig price. Martha x4424 or 776-9689.
- 2 Aquarium, 10 gal, w/access, \$8; lrg bird cage, \$6. x6814
- 2 Free: upright piano, you pay moving, loc in Melrose. Fay, x4005.
- 3 Pr of Realistic electrostat 3 Super Tweeters, mahog finish, unused, \$30/pr or best. Bill Frey, x6127.
- 2 Golf club set, cart, bag, etc, brnd new, \$125 or best. Tom, 864-5687.
- 2 Dbl bed w/frame & Hitchcock headbrd, \$50. Leon, x4363 or 868-9380.
- 3 LR set (6pc): sofa-bed, rocker, chr, 3 sml tbls, \$165; bx spring mattress w/headbrd, \$60; DR set w/4 chrs, \$40. Call 232-0965 evgs.
- 3 Dbl mattress & bx spring "new" from Goodwill, \$40; dbl bed frame, \$10. Jeff, x2068 or 491-1770.
- 2 Setchell Carlson port 19" tv, gd cond, \$40. Archie, x331 Linc.
- 2 Ski poles, w/dn skis, women's ski boots, sz 10, \$20. Call 862-4090 evgs.
- 2 Ski boots: sz 9 1/2-10, buckle, \$12; sz 9 1/2-10, lace, \$5. Fred, x6650
- 2 Reference sources for students and writers, 75c. Call 272-6076.
- 2 AR3A loud spkr systems, brnd new, full warranty, oiled teak. Call 734-3937 evgs.
- 2 Labrador retriever, AKC, championship stock, family raised. x174 Linc or 862-2873.
- 3 Sears 17 cu ft refrig, total frostless, 2 yrs old, orig \$335, asking \$195, exc cond. Call 933-1457 evgs.
- 3 Veriwide 100°, 2 1/4 x 3 3/4 wide angle camera, \$250; BC-348 radio rcvr, \$15. Dick Orlen, 864-8841.
- 2 Ladies ice skates, sz 8, brnd new, \$9. Devon, x6709.
- 2 Pr men's Le Trappeur buckle ski boots, sz 11, gd cond. Call 868-9746 evgs.
- 4 Craftsman 8" tbl saw, w/3/4 hp motor, metal stand, 2 extensions, xtra blades, catalogue price \$177, sell \$120. E.J. Casazza, x7266 Linc.
- 4 Bby carriage, (stroller, carriage, car bed comb), new \$75, asking \$35; maternity clothes; children's clothes; women's clothes. Call 484-5357.
- 4 Wdn skis (2pr) w/step-in bndgs: ladies 180 cm, \$35, men's 205 cm, \$45. x6948 or 491-4792 evgs.
- 2 TV, 23", FM-AM radio & rcrdplayer, all 1 pc, best offer. Call x3485.
- 2 Exercycle w/speedometer, used only 5 miles, orig \$84, w/ take \$70. x2897 or 862-6706.
- 2 Suede coat, mink collar, sz 10?, best offer. Sherry, x7365.
- 3 Hand carved chess set; 2 metal bed frames for tw'n sz bed; studio couch w/bolsters. Marilyn, x5381.
- 2 Free: male Springer spaniel puppy, 10 wks old, has puppy shots. Bob, x5480 Linc.

GROCERY STORES

Frank Doherty used to be a successful accountant; his wife Arlene, a registered nurse. Three years ago they took up a joint new career, running grocery stores.

Mr. and Mrs. Doherty own and operate the stores at Eastgate, Westgate, and the apartment complex at 100 Memorial Drive. As a labor of love, Mr. Doherty now is a combination truck driver and stock boy, and having more fun than he ever had "sitting at a desk over a lot of numbers."

"You get to meet all different kinds of people," he says with obvious enthusiasm. "In accounting, it's all the same—whether it's gro-

ceries or widgets, it's all numbers."

The stores carry a variety of items, from milk and bread to the kumquats and steak and kidney pie at the 100 Memorial Drive store. Tastes vary from store to store: the young families with children in Westgate buy more Coke and beer, for example, than the older residents of 100 Memorial Drive, who buy Schwepp's and some rather exotic delicacies.

When he left his accounting job, Mr. Doherty's new career took on a personal irony. "As a kid, I worked in a grocery store for 27 cents an hour. I hated it. I swore I'd never work in one again."

- 2 Sears Kenmore zig-zag sew mach, exc cond, \$90. Call 876-4160.
- 3 Wht enam kitchen cabinet, 2 dr, w/shelves, was \$30, now \$15; man's Norwegian sweater, \$20. Gunderson, x6085 or 332-8251.
- 2 Gldn Swiss watch w/gldn bracelet (18K), ladies' sml sz, \$70. Sylvia, x2021.
- 2 Hvy duty hand lawn mower, 3 yrs old, \$8. Jack, x7521.
- 2 AR3A spkr systems (2), \$150 ea. Ken Britting, x3750.
- 2 Rear bicycle basket, lk new, \$5. Call 868-5837 evgs.
- 4 Modern Chess Openings, latest ed, unused, best offer over \$5; navy blue spring coat (wool), princess style, sz 16, worn a few times, \$15. Nancy, x3350 or 547-8949.
- 3 Couch bed; DR set; bkcase; coffee tbl; lamp; chest of drawers; GE hairdryer; v gd cond, reas price. Lucy, x2156 or 357-8137 evgs.
- 2 Broil King: rotisserie, broiler, baker, used 1 wk, \$40 or best. Issy, x6502 or 734-2967 evgs.
- 3 Danish rya rug, 8.2'x11.6', 4 mos old, pattern in brwn shades w/bits of blk & wht, exc cond, orig \$325, asking \$200 or best. Heide, x6281.
- 2 Schwinn 10 spd bicycle, purple, \$15 wrk on it, \$55. Dave Lockwood, x3261 (Room 207).
- 3 Bunkbeds; dbl bed; divan; oak chest; DR set; bkcases; elec tools; sew mach; carpet, 6x10; etc. Call 237-2143.
- 3 Topcon UNI camera f2/53mm; Topcon UV wide angle lens f3.5/35mm, both w/case & filter, best offer. Ho, x2034 or 868-5608 evgs.
- 1 Tire, 6.50x13, w/rim, \$15 or best. Tom, x7272.
- 2 Head slalom skis, 190 cm, asking \$68, gd cond. Call 354-5658.
- 2 Zenith 21" tv, w/stand, gd cond, for quick sale \$55. Gayle, x2481.
- 5 Stereo amp, modified Brute design, home brew, 35w/ch cont, plus v gd Fet type pre amp, \$100; Scott LT 112B stereo Fet tuner, nds adj, price negotiable. Dave Roberts, x1815 or 547-1212.
- '62 Ford Futura, rebuilt eng, \$150 or best. Mark or Rich, 661-0398 evgs.
- '62 Plymouth, 8 cyl, w/air cond, auto, exc motor, \$300. x5040 or 547-1317.
- '64 Chevy Impala, \$400. Dottie, x6482.
- '64 Rambler, best offer. Ron, 846-7426.
- '64 Ford sta wgn, 8 cyl, stndrd, overdrive, pwr st & brks, \$6K, \$600. Call 862-8475 evgs.
- '64 Valiant, 4 dr, stndrd, gd cond, asking \$175. x6980.
- '65 Chevy Impala SS convert 327, 4BL, int exc, pwr st & brks, 4 gd tires, brks & exhst overhauled last fall, gd running cond, nds body work, \$600. Call 862-4336.
- '65 Corvair, yours for asking, being junked, all parts, tires, radio, batt, etc. Susan, x4601.
- '66 Ford Fairlane sta wgn, v-8, Cruso Trans, R&H, pwr st, roof rack, stud snows on xtra wheels, exc cond, \$750. Bill Thompson, x6271.
- '66 Corvette convert, 327 cid, 300hp, 4 spd, positraction, 2 tops, AM-FM. Call 698-0464 evgs.
- '68 122S Volvo, mech perf. Roy, 828-1567.
- '69 VW convert, low K, exc cond, must sell immed, \$1695. Call 491-2964.

- '70 MGB, exc cond, xtras. Andy, x7920 or 288-1909 evgs.
- '70 Mustang Mach 1, 351, 4 barrel, 4 spd hurst, pwr st & pwr disc brakes, R&H, stereo, 75K, remainder of 5 yr warr, \$2800. x7771 or 275-0244 evgs.

- Town house, 4 BR, nr Prudential, gd neighbhrd, rent June. Call 261-3226 evgs.
- Camb apt, 2 BR, LR, mod K, new B, ww carp, avail immed, married cpls only, no pets, \$175 htd, no util. Call 876-1887.
- Camb sublet, Cent Sq, efficiency apt, avail Apr 3, \$118. x3229 or 547-7982 evgs.
- East Lexington, mod house, furn, 4 BR, 1 study, 15 mos from June 1. Call 862-0007.
- Newton, short rental, 7 rm house, residential area, nr school, (Apr, May, June) furn, unfurn, fee negotiable. Call 244-8303 evgs or wkend.
- Woburn sublet, mod garden apt, 1 BR, unfurn, air cond, from Apr, \$195. Call 933-6442.
- Nr Wellesley College, lght hskkeeping apt, 2 rms & B, furn, can wrk out part of rent. x2467 or 237-1350.

WANTED & MISC.

- Medium sz refrigerator. x2546.
- Wl trade '69 VW bug, 24K, for sta wgn, not older than '68, or sell and buy. x7140.
- Reliable mother wl give exc day care to any child, any age, in her home, references. Call 864-4663.
- Wl do typing. Moira, x6202.
- Lrg roof luggage rack for Volvo 122S wgn. Corry, x5783.
- Wl do thesis & other typing on IBM elec. Lynne, 491-4312.
- Wl swap Albany Gar prking sticker for Windsor Lot sticker. Alan Jones, x7230.
- Girl's bike, 3 spd. Sally x3228.
- Fem rmmate for Inman Sq apt, Apr 1-June 1, own rm, \$87.50/mo inc all util. Betsy, x6745 or 354-2546 evgs.
- Empty bby food jars, wl pick them up. x5785.
- Loving home for 1/2 siamese, 1 1/2 yr old, beautiful blk male altered cat. x1732 or 731-6375.
- Back issues of "Road & Track" magazine. Paul, x6948.
- Daily rd from Linc Lab to Westgate apts, Rt 128, Woburn (5 pm). Joyce, x5724.
- Wl rent 1 or 2BR apt up to \$160/mo, able to move in July 1. Rich, x5649.
- Exper teacher wl tutor primary grade subjects, high school & college level Eng & German. Call 354-8183 evgs.
- Studio apt or a rm w/cooking fac nr MIT from fall '71. Ajmal, 547-1466.
- Bx springs & mattresses, 1 dbl, 4 snlg; frplace access; kit utensils. x4351 or 267-4266 evgs.
- Fem to do lght hskkeeping in apt, or referral to one. Dave, x3959 or 491-2127.
- Wl do reg & thesis typing. Marsha, x2342.
- Bby crib & stroller in gd cond. Call 862-0915.
- Second hand microscope for general child's use. Tdreas, x5296.

Tech Talk is published by the Institute Information Services. Ads may be telephoned to Ext. 2707 or mailed to Room 5-122. The ad deadline for the April 8 issue is March 31. Ads not accompanied by full name and extension or room number will not be printed. Ads are limited to one per person per issue and may not be repeated in successive issues. Send only news and comment to Joanne Miller, Room 5-105, Ext. 2701.