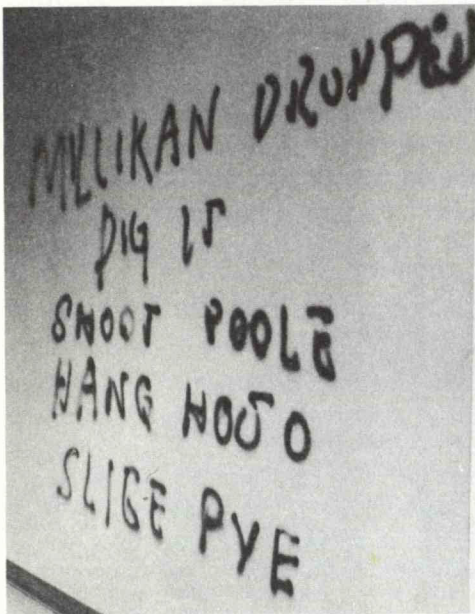
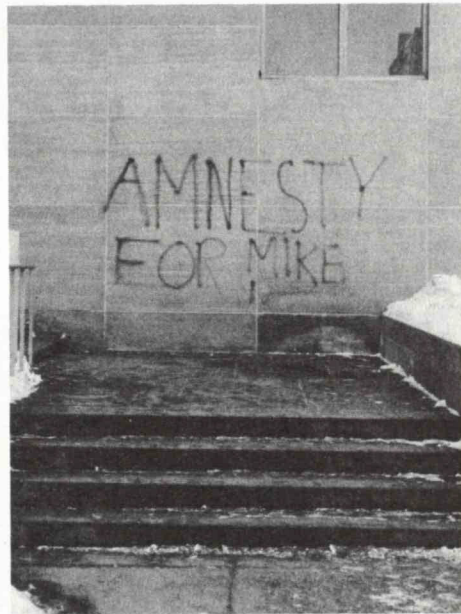


TECH TALK
TECH TALK
TECH TALK
TECH TALK

MASSACHUSETTS INSTITUTE OF TECHNOLOGY January 14, 1970



At the Center for International Studies.



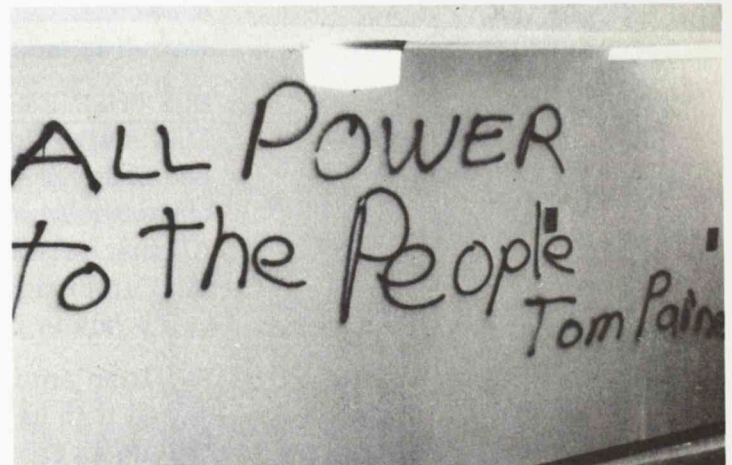
Outside Hayden.



At CIS again.



And Hayden, too.



And in Building 35.

LOOK WHAT A DOLLAR AND A HALF CAN DO

Last Wednesday night vandals circulated around the Institute spreading destruction with spray paint. This was the second outbreak of this kind during this school year. Early in the fall walls of five buildings were defaced and the clean-up which followed not only took a great deal of time but also consumed \$3,000. Estimates are not all in on what it will cost to repair the new damage but, according to Physical Plant, the price will be substantially greater, money which might have been spent on new books for the libraries, classroom renovation or even for flowers and trees. It is unfortunate that an institution for higher learning should be subjected to high school-type vandalism.

NEW OUTPOST

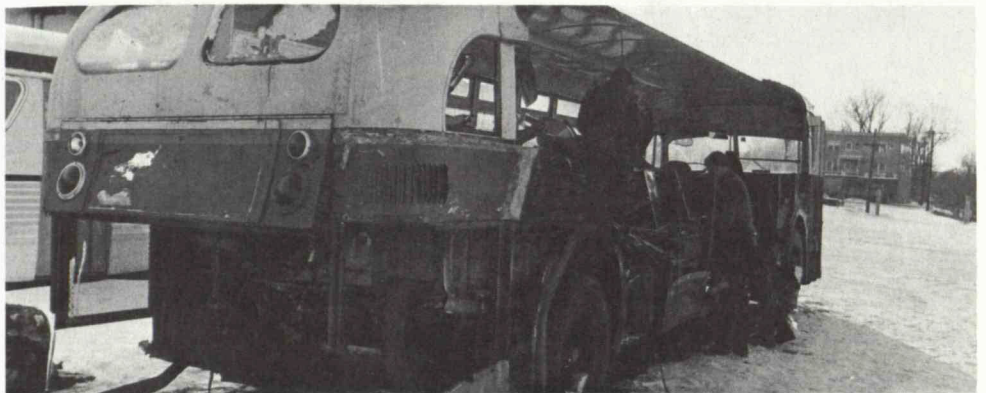
For a Christmas present the Urban Systems Laboratory got a new home--at least temporarily--in the Webster Building on the corner of Wadsworth and Amherst Streets, just across from the Sloan campus. About 100 people now inhabit the former carbon paper factory, but the population is growing rapidly and will double by the time USL's scattered forces have moved in. What the new space amounts to is a first for the young laboratory, the first time its varied and innovative projects have physically been together.

USL's scheme of redecorating is highly reflective both of its modest funding and of the flexible and fluid nature of its projects. For the most part, walls simply don't exist. Room and area divisions are made either with modular floor-standing units bolted together or with panels hanging from the ceiling, all white or brightly colored.

Among projects housed in USL's new home--also known as Building E 40--the largest is CARS (Computer Aided Routing Systems), an intriguing system which would combine the convenience of door-to-door taxi service with the economy of public transit. Several other transportation projects are also underway, investigating its problems ranging from hardware to economics and social impact. Still other groups are tackling such areas as health and social service information systems and the prospects for new communities. In fact, there's hardly an area of urban life which isn't covered at least partially by USL's broad umbrella.



Walker Kupfer and Milt Trageser in an office at Project CARS.



Our new shelter in a preparatory state.

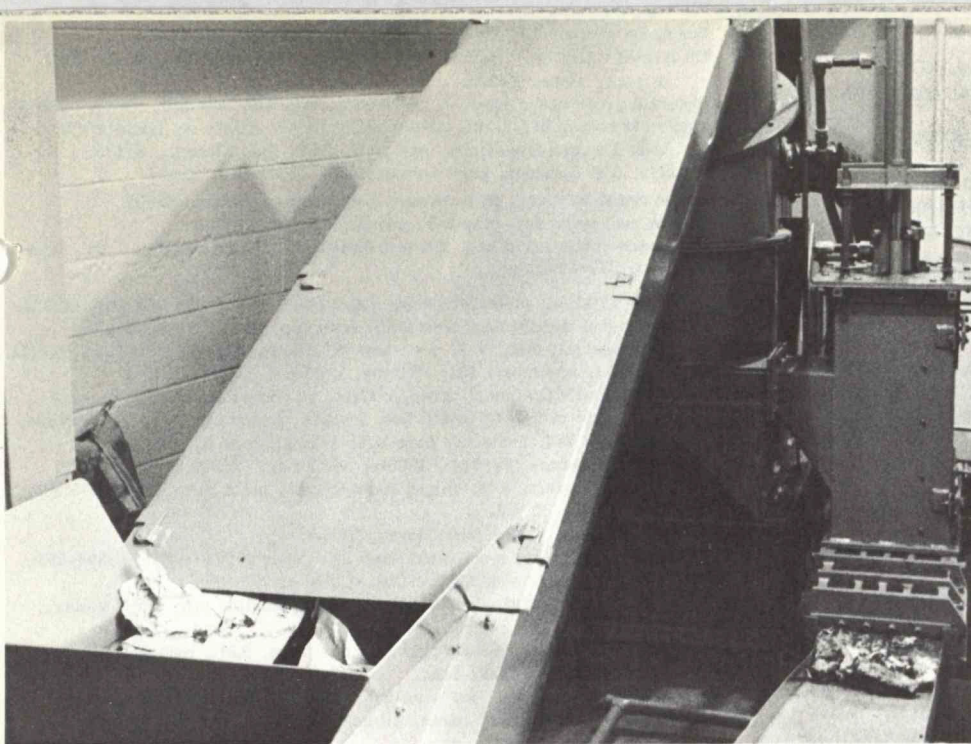
BUS BUSINESS

Man's age-old search for shelter from his environment has long been begrudgingly portrayed by bus waiters across from 77 Massachusetts Avenue, especially during our customary mid-winter chill. All that has been remedied now in an ingenious way suggested by the Cambridge Seven architects. When you're waiting in the snow, half a bus is better than none, they reasoned.

So, from among the MBTA's retired vehicles, we bought a bus, sawed it in half lengthwise and installed it in the appropriate place. Unique as the bus may be, it's only temporary. A permanent shelter is planned.

This experiment in reconverting one of society's discards to a new useful purpose does not stop with the bus shelter. Possibilities for using the bus in a children's playground are being investigated. After the playground...who knows?

There will be a dedication of our version of the T this afternoon at 1:30. Professor Robert C. Wood, MBTA chairman and director of the Joint Center for Urban Studies will deliver the dedicatory address on the site, and we're all invited.



The trash-smasher at work.

A TRASHING MATTER

It's fluff, it's brick, it's Supertrash! That's what comes out of a new machine we have. Into the machine go the the standard office and laboratory trash that accumulates every day--papers, boxes, tin cans, almost anything. First it is pulverized in a long cylinder something like a meatgrinder, emerging as fluff very similar to the insulation used in Jiffy-bag mailers. Ordinarily it continues on into a compactor where liquid is added and emerges finally in briquettes, roughly one-fifteenth of its original volume.

The machine was lent to MIT by its manufacturer in hopes that clever students will make modifications on it which will make it even more effective. But even in its present state of development, it offers great help in reducing the tremendous disposal problems faced by an institution of our size. In addition, there is no pollution involved since there is no incineration of the trash.

Studies aimed at using the products of the machine--either fluff or briquettes--are being carried on in several departments and Professor David Wilson of Mechanical Engineering is eager to encourage more experimentation. If anyone would like some supertrash to work with, please call him at Ext. 2237.

HERE AND THERE

There'll be a first next Thursday afternoon (January 22). It will be a tour, including a brief lecture and demonstration, of the Information Processing Center (Building 39), a greatly used but little understood--by most of us--facility. The tour will begin in Room 39-400 at 2 p.m. and last approximately an hour. Depending on interest expressed, additional tours will be scheduled at monthly intervals.

If you walk into the Music Library only to be greeted with the sound of silence, take heart. There is a new music listening room in Walker, Room 101. The library has been reconverted for the use of serious scholarship and score reading, but will pipe music to the new lounge in Walker. Requests for specific selections to be played may be made in the library.

MARKSMANSHIP

The MIT Pistol and Rifle Club is offering a course in basic pistol marksmanship beginning Thursday, January 22 at 7 p.m., and running in two-hour sessions for four to six weeks. Lessons will be limited to 20 adult members of the community, with pistols provided, leading up to competitive shooting with 22 caliber pistols. Anyone interested in attending should call Bill Wescott, Ext. 2471, for further details.

FOR SALE, ETC.

Minox B ultra mini camera, \$175 new, now \$110. Morry, X177 IL7.
Kastle snow king skis, fiberglass, 185cm, step-in bndgs, were \$200, hardly used, \$100. Mark, X6662 or 491-3488.
Snows, 6.85x15, 3 K, \$25/pr; 6 yds Danish upholstery fabric, char grey, \$30. Nelson, X5938 or 262-9544.
Unused bed frame, \$15; bed rails, \$5 & slats, \$2. Call 389-1537.
Colonial 3/4 bed, exc cond, reas. Nancy, X3201 or 244-3706.
Baby stroller, \$15; crib, \$15; high chair, \$10; exerciser machine, \$40. Claudia, X4565.
Sears 18" snow thrower, gd cond, \$100. John, 484-2735 evgs.
BSO tickets, 2, ctr flr, Sat, 1/17, 2/21 & 3/28, were \$58, now \$48. Call 924-4599 evgs.
New Zenith 16" TV, \$99. X2480 or 868-9734.
BSO tickets, 2, Sat, 1/24, Orch, row 5, \$17 or best. X7116 or 244-7178.
Fl size bed, comp w/ fitted sheets, elec blanket, \$70. Call 646-3153.
Kodak zoom 8 camera, auto f/1.9 lens, exc cond, 8 yrs old, w/case & daylight filter, \$15. Jack, X6131.
LeRoy II ruler set, \$100. Richard, X4841.
Woman's clothing, sizes 10-14, sum & winter. Call 926-2478.
West'hse roaster w/cab, \$20; FM car radio. Angelo, X7540 Linc.
Mtd 8.55x14 tires, 1 snow, 1 reg, \$14. Nate, X7838.
Man's 200cm giant slalom skis, \$30; Pentax spotmatic w/f/1.4 50mm lens, 24mm lens, new, many filters, \$300. X2814 CEA.
Historical gravestone rubbings, exc, \$10-\$20. Call 491-0015.
Lady's Sohler skis w/release bndgs & metal poles, \$30; buckle boots, 8N, used 1 seas, were \$65, now \$24. Mrs. Anker, X431 Linc or 862-1760.
Set of Rogers drums. Paul, X357 IL7.
Socialite wh lugg, 24" & 27", \$35 or best; 3 pcs beige lugg, \$20. X5766.
Paine's dbl bed, maple bkcase; 2 maple chests, \$50 ea. Call 862-1935.
Humanic ski boots 7 1/2M, v gd cond, \$15, were \$50. Elaine, X2725.
Dynamic VR 17 skis, 207cm w/Tyrolia step-in bndgs, \$145; Lange Pro boots, 9M, like new, \$80; Scott poles, \$7 w/above. Larry, X376 IL7.
KLH mod 8 FM tuner & spkr, new \$160, best offer. Peter, X282 IL7.
Lady's Reiker ski boots, 6N; 5'6" skis w/ski-free bndgs, all for \$16. X2250.
Eico 3-chan color organ, assem & wrking, orig \$50, now \$35. Jim, X6232.
Tubeless snows, 8.25x14, used 1 winter. Call 489-0667 evgs.
Pr brass candelabra lamps; pr bkcases; 2 wool broadloom rugs w/pads; misc hsehold items. Call 296-9123 evgs.
Sew mach, recent recond, yr guarantee, \$50. Ellen, X3226.
Man's buckle ski boots, 9, \$10; assort sizes children's ice skates. Call 484-7681 after 3 pm.
Dachshund puppies, std, champ lines, M&F. Don, X5869 Linc.
NC-101X amateur band recvr. Ed, X6440.
Nrlly new sax & Shure solophone headphone preamp; working bicycle in reas cond, discuss prices. Harry, 864-8390 evgs.
Hand operated fruit slicer, used once, \$5 bargain. X2433.
Varnished wicker chests, new, 5 1/2"d by 23"xl5" & smaller, \$3.50 to \$1.75; open coil sgl bed spring, \$10. Call 395-6061.
Henke man's ski boots, 10, hardly used, \$15. Bob, X6015.
Ham station; Viking Challenger; Eico 722 VFO; misc equip, best offer. Ben, 494-2652.
Turkish meerschaum pipes, hand carved or plain, \$15. Nihat, X3157.
Emerson 9" B&W TV, 3 mos old, guarantee, \$50. Call 646-3290.
Summicron 50mm f/2 lens, dual range, for Leica M2-4, \$95 w/warranty. Donovan, X4067.
Viking II transmitter & VFO, \$100. Peter, X5007 or 327-6514 evgs.
Dalmations, AKC, 6 wks old. X7329 or 729-4970.
Sm Sony TV; Autoharp, 15 bars; elec iron; tennis racket w/case; diamond ring, Tif setting; wedding gown, guitar. X7973 or 262-2177.
Wooden sloop, 23'x6'x4 1/2', \$1500. McKinney, X2461.
Round cof tbl, \$15, match end tbl, \$10. Shapero, X5764 or 7194.
V affec sealpt Siamese kittens w/papers. Dick, X3165 or 653-8189.
Playpen, stroller, gate, bathinette, etc, lg doll carriage. Call 469-0335 evgs.
Wd skis & bndgs, 180cm, \$30; woman's boots, 6 1/2-7, dbl lace, gd cond, \$25 or both for \$45. Mary Cooper, X4705.
Corvair '66 eng, exc cond, 2 carbs, \$125; other parts avail. De Fazio, X6389.
Singer treadle sew mach, \$10; comp sgl bed, \$25; Frigidaire w/frzr top, \$25; K set, ext tbl & 4 ch, formica, \$25; all gd cond. X2203.
Pr ski boots, 7N & rack. Joan, X2361.
Marantz trntbl, SLT 12, \$70. X3449.
Sm phone tbl w/shelf; brass bird cage w/copper std; med wt shovel. Call 232-0484 before 9 pm.
KLH 20 stereo w/dust cover, \$295. Ted, X428 Linc or 643-0889 evgs.,
Auto gas hot wtr tanks, copper lined, 30 gal, gd cond, 1 1/2 yrs old, \$65; 3 yrs old, \$50. Syd, X6406.
Reverse mod 555 2x2 slide proj & 6 trays, \$25. X4646.
Boys' hockey skates, like new, 2 prs 2, 1 pr 5. Katy, X2396.
Head 360 skis & bndgs. Linda, 569-2086.
SCM Coronet port elec typwr, script type, \$80; wd bkcase w/sliding glass front, \$30. Anant, X2338 or 623-0835.

Wd storm windows all sizes, \$1 ea. G. Berger, 782-2373.
Oil burner w/boiler, controls, wtr circulator, thermostats, hw htr, \$150 or best. Gene, X4029.
Emerald green crepe gown, 7, worn once, was \$50, now \$20. Sandy, X2144.
Man's ski boots, 10 1/2, \$5; outside pking space, Ellery st; Pentax H3-V body & tripod Hnwltmtr, exc cond, \$100. Joel Altstein, X7625.
Wd skis, 6'4" w/bndgs, used 4 times, \$35. Bill Davis, X5557
Green tweed 9x12 rug, just cleaned, \$30; toaster. Grant, X5075.
Br new mah jongg set, orig \$35, now \$25. Walsh, X1918.
Pr Siamese cats (ma & son, altered) nd suburban home together. Dr. Benedict, 277-2220.
'58 Edsel Citation, collectors item, beaut body, new trans. George, X4324.
'61 VW sedan, rebuilt eng, runs well, body bad, \$200. Fred, X6029.
'61 Buick Special, 40K, V-8, p st, new br & muff, fall sticker. Hack, X6212.
'62 Olds wgn, new tires, \$85. Wilson, X4630.
'63 Mercedes 180D, Diesel, grey, red int, gd cond; auto stereo, 8w, cassette; auto radio AC5-6000, 12v, 2 spkrs, 6 mos old, \$75. Jim, X2588.
'63 VW from Calif, exc cond, best offer over \$700; hi-fi, \$95. X7587.
'63 Volvo Humpback (PV-544), \$500 or best offer. X5880 or 643-9018.
'65 Mustang convert, V-8, 4-spd, many extras, must be driven, \$800 or best. Dave, X5873.
'65 VW, gd cond, \$750. John Glover, X2084.
'66 Fairlane wgn, exc mech cond, best offer over \$700. X4195 or 894-4938.
'66 VW sunrf, perf cond, \$950. Don, X7546 or 298-9291.
'66 Mustang 289, 2-brl, 4-spd, disc br, spec handling pkg, R&H, v clean, 51K, \$1350. Call 369-5017.
'68 Pontiac Tempest, 2-dr, 6 cyl, std, new tires, R&H, asking \$1300. John MacDonald, X297 Linc.
'69 Mustang mach 1, 351, auto, yellow, \$2850. X2120 or 762-9054 evgs.
Maserati, cream puff, 3.5 litres, all newly rebuilt, must see, \$6000. X5266.
Mt Sunapee, new ski cott, wkday rentals. Jerry, X7673.
Eastgate, 2-BR furn sublet, 2/8-6/15 for MIT cple. Athans, 868-2666
Ski chalet, 15 min to Cranmore or Bridgton, Me, wkly or monthly. Bob, X7115 Linc or 245-1263.
Mt Sunapee chalet, slps 9, fp, 1 mi from ski area, wkly rental. Norm, X7350.
Ski lodge, slps 6, nr Attatash, Wildcat, Cranmore, wkly or monthly. Call 527-0882 evgs.
Bel, 2-BR apt in 2-fam hse, \$185/mo incl ht & pking, avail 3/1; wl sell some furn. Call 484-2448.
Ntn, 4-BR hse, 1 1/2B, all appl (dish & disp), 2 car gar, avail 1/20, \$450/mo. Call 244-2050 evgs.
Bel, 2-BR apt, nr bus line, avail 2/1, \$180/mo. Peter Huntley, X3734.
Bel, rm rental in priv home nr T, K priv, gent or cpl pref. Sperduto, X4152.
Dorch, 1-BR apt, lg rms, nr Ashmont sta, quiet st, 30 min to MIT on T, avail 2/1, approx \$130/mo. X1979 or 825-4711.
West Camb, K, LR, 3 BR, gar, nr Fresh Pond. Call 864-7937.

WANTED & MISC.

Wl do typing. Linda, X6755.
Rugs, 9x12; refrig; desk; all in perf cond. X4282 or 729-8077.
West'hse washer; ext ladder; Healey side curtains; frzr. Dennis, X7333.
Wl refresh your knowledge of conversational German. Call 876-3468.
Daily ride, MIT-Lexington. X5217.
Fem rmmate to share 5-rm furn apt, own rm, \$75/mo. Norma, X3570.
Elec potter's wheel, variable spd. Bob McAulay, X695 Linc.
Wl do housepainting, inside & out. X3468.
Fem rmmate for mod, fly furn Bri apt, \$65/mo. Aphrodite, X2295.
Wkend rides to ski country, wl pay. Eileen, X1996.
Wl crochet new peek-a-boo vests. Carol, X107 Linc.
Daily ride, North Camb to Reactor, wl pay, 8:30-5. X4211
Typing, experienced in thesis work. Mrs. Fuller, 646-1656 evgs.
Daily ride from Marblehead, wl pay. Betsy, X2698.
Maternity clothing, gd cond, 11-12, reas. Call 864-3116 evgs.
Fem rmmates (2) for Brk apt on T, 2 BR, 2B, \$90/mo. Caren, 734-9875.
Crew for 210 sloop, 5/30-9/30, out of S Bos hrbr, exp desired. Call 333-0635 evgs.
Boy's 24" bicycle, 3 gears, inexpensive. Call 266-0702.
Iceboat. Call 731-0106.
Typing. Ruth, X2476.
Fem rmmate to share Marl st apt, avail 2/15, pref working girl in mid 20's. Call 266-4582 evgs.
Male rmmate for furn apt nr Cool Crnr, own rm. Joel, X5598 or 566-0430.
Tech thesis typing. Miss Wiley, X4380.
Mechanics tool cab w/sliding drawers. X7645 Linc or 358-2140 Wayland.
Tall men & women to fight pollution. Fred, X6425.
Baby crib & high chair. Vernon, X3706.
Sm hse or apt west of Bos for married cple, reas rent. Cheryl, X4346.
Sitter for 15 mo child 4 days/wk, Eastgate. X7538 or 868-4935 evgs.
Yng mother wl babysit in Bel home. Call 484-1697.
Gar, pref htd, in MIT-Main St area. Fred, X3911 or 491-0493.
Framingham-MIT ride offered 3 days, wanted 2 days/wk. David, X2942.