

TT Photos by Owen Franken

GOING UP

The Institute is nearing the end of the \$35.5 million construction planned as part of the enormously successful Second Century Fund five years ago. The towering Green Building now seems always to have been there as, indeed, do all of the handsome structures that have opened in the past couple of years. Only two remain to make their debuts: the Center for Advanced Engineering Study and the Center for Space Research, and both are coming right along. If construction schedules hold true, both will be operational during the 1967-68 academic year.

Even though this construction boom is impressive, it is by no means the end of campus building. Four others are under construction and active planning is underway on at least two more. So, when you see big cats and cranes here and there, here's what's coming:

Vassar Street is especially active with the Center for Space Research and its neighbor, a new Computation Center which will house the giant IBM 360/67. Just across the street, the Central Refrigeration Plant is rising to provide proper climatic conditions for the new buildings from a single source.

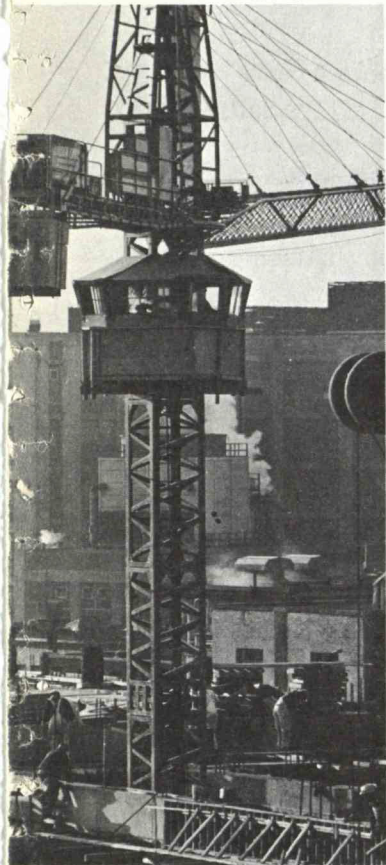
On Mass. Avenue, the Center for Advanced Engineering Study is now visible above the construction fences (one of which carries out the value of pi to 21 places). The west end of Amherst Street displays more construction fences behind which the addition to McCormick Hall will shortly be showing.

The east end of the campus has what may be the most striking construction, a 30-story apartment tower known as Eastgate. Soon to be topped out, the building will contain 204 apartments for married students and faculty members who will be moving in come fall.

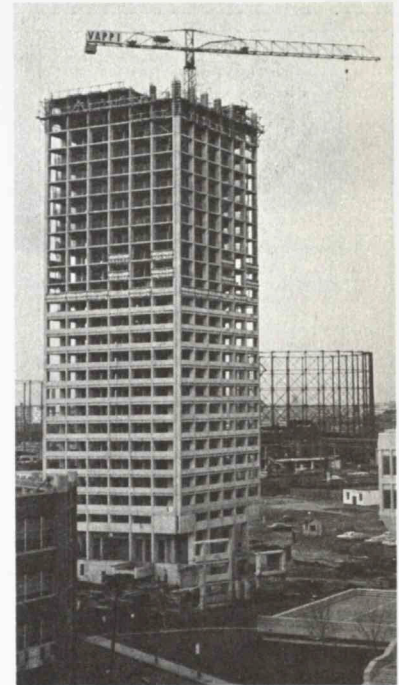
The drawing boards of the planning offices and various architects are also busy with projects yet to begin. A new chemistry building which will complete I.M. Pei's design for the McDermott and Eastman Courts area is in final planning stages. Still glimmers of the future are the McGregor dormitory, an overhaul for the Engineering Library, and an outpost, the Linac 400 mev accelerator to be built near Middleton, Mass.

UMOC??

Seen any funny looking students around lately? Chances are, they're only campaigning to be elected Ugliest Man on Campus. Reviving an old tradition, the service fraternity Alpha Phi



Space capsule atop Center for Space Research.



Six stories to go to topping out for Eastgate.

Omega will conduct the contest next week to benefit the American Cancer Society of Massachusetts. Only male students are eligible to compete, but the entire community is invited to vote early and often, December 6-9 in the lobby of Building 10. Votes in this contest will actually be cash--honoring the legendary practice of buying votes--and the "ugliest" man will actually be the one who raises the most money.



15th Century English Lady.

JINGLE BELLES

If the chilly air and the gaily decorated streets aren't enough to remind you that Christmas is coming, MIT's ladies will.

On Friday (December 2), the MIT Dames take over the lobby of Building 10 for their popular annual Christmas sale. As usual, all merchandise is handmade with imagination and skill, from children's clothes and knitted items to bright pottery and Christmas decorations. Exotic jams and jellies and zesty fruitcakes will help you follow your nose to the sale.

Equally popular is the annual sale of the Association of MIT Alumnae which features books and white elephants in addition to decorations and baked goods. This Christmas sale will be held Monday (December 5) in the Bush Room (10-105) beginning at 10. As an added attraction for hungry shoppers, snacks and sandwiches are offered. Proceeds from AMITA activities are used to encourage and support future members who are still in school at the Institute.

Across the street the TCA office in the Student Center has a vivid display advertising UNICEF Christmas cards which will be available until December 9. The cards are the work of artists from many nations whose pictures capture the universal spirit of the season. Also available are the handy and colorful UNICEF calendars. Proceeds from these sales help support the organization's programs for the world's children. Last

year UNICEF won a Nobel Peace Prize.

Unique Christmas presents from England are available from an enterprising student wife who hopes to earn money for an American vacation before returning to England. Cashing in on a former hobby, Elizabeth Handy has a number of silk-screen prints made from English brass rubbings (see above). The prints, 5-foot scrolls on heavy parchment, are a striking decoration for any home at a modest price. Call Mrs. Handy at 868-0735.

NEW FACES, 1967

On February 1, Dr. Robert A. Alberty will join the MIT faculty as professor of chemistry and dean of the School of Science. Both a distinguished scholar in the field of physical chemistry and an experienced administrator, Dr. Alberty has been Dean of the Graduate School at the University of Wisconsin since 1963. Dr. Alberty will succeed Dr. Jerome Wiesner who was appointed Provost of the Institute in July.

The new year will also bring a new director of Lincoln Laboratory, Dr. Milton U. Clauser, as successor to the late Professor William H. Radford. Dr. Clauser has also been appointed a professor in the Department of Aeronautics and Astronautics. Lincoln's acting director, C. Robert Wieser, will become Deputy Director of the Lab at the same time.

UF--UNFINISHED

Last Wednesday's papers carried the happy news that the United Fund completed its campaign with 100.1% of its goal. MIT, however, was still about 25% short of its goal, with Professor Antoine M. Gaudin, this year's campaign chairman, striving to round up the outstanding reports. Returns are still coming in and, with a little effort, MIT can meet its goal of \$128,000. If you have not yet filled out your card, please do so as soon as possible and return it to Miss Dawson, Room 10-180. Who knows--MIT might be able to boost the campaign to 101%.



Mrs. Buck and Professor Gaudin in optimistic moment.

OF HOLIDAYS AND WINTER

To wish its community an extra merry Christmas this year, the Institute has decided to close at noon on Friday, December 23. The following Monday (December 26) is the official Christmas holiday when the Institute will also be closed.

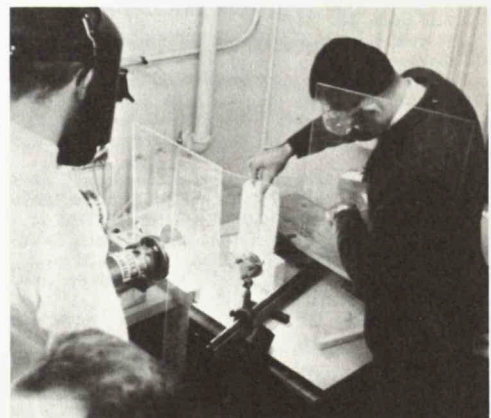
The Old Farmer, whose rate of accuracy has never fallen below 70%, has foreseen a snowy winter for us this year. If he's right and the snow piles up enough to make it difficult to get to MIT, two local radio stations will be alerted when the Institute plans to close. Tune in to WBZ (1030 kc) or WHDH (850 kc) to get up-to-the-minute information. Please do not call the Institute, for on stormy mornings the switchboard is really snowed! A card with more specific information on snow-closings will be delivered by Institute mail within the next few days.

The bracing air brings joy to the hearts of many Institute skaters now that the rink is open again. General skating hours have been arranged as in previous years. You can pick up a schedule when you drop your skates off to be sharpened.

The annual Christmas exhibition and sale of original prints will begin next Wednesday (December 7) and run through December 16 at Hayden Gallery. The hours are 10 to 4 on Monday, Tuesday and Friday and 10 to 6 on Wednesday and Thursday.

LASER LEAD

The brainstorming of two MIT sophomores has produced a new laser application which could lead to a major advance in hard rock excavation work. Working with a one kilowatt gas laser at Raytheon, Robert Gladstone and Anthony Kettaneh discovered that its beam could split hard rock quickly and efficiently, thus making tunnels through rock much easier to build. Their successful experiment aroused the interest of the Department of Commerce which is working on a number of concepts for intercity transportation. Last week the students, together with faculty advisors, starred at a press conference describing their literal break-through. More recently, national television networks were preparing to film the young researchers at work.



Rockbusters.

TT Photo by Harry Cooper

FOR SALE, ETC.

Wool rug, cranberry, 8x10, gd cond, \$10. Joan, X6736.
 Italian provincial fruitwv hope chest, exc cond, asking \$125. Call 666-3862 evgs.
 Wilson K28 comp golf irons w/bag, incl putter, wedge, almost new, best offer.
 Ken Wilson, 783-0989.
 Slide proj, 10 yrs old, gd running order, w/carrying case, \$12.50. X5361.
 Household furn, some custom made, all reas, moved to sm apt. Call 277-3457.
 Midget 10' cruising sloop, canvas sails, fiberglassed hull, cabin w/bunk, good
 Christmas present for kids, \$295. Call 944-2138.
 Lady's ski boots, 9, exc cond, \$15. Call 734-5104 evgs.
 Kitten, 8 mos, neutered m, all shots, housebroken, affec grey tiger, moving,
 unsympathetic landlord, needs good home. Marilyn, X4100.
 Ironing board, gd cond, \$5. Martin Melnick, 868-3641.
 K set, 36x60 formica tbl, 3 ch, 4 1/2' bench, \$15 comp. Also 17" Admiral TV,
 gd cond, \$20. Ed Carhrey, X3993.
 ISO tickets, 2 for Tues, Dec 27. X7198.
 Free: affec, gentle, housebroken f rabbit w/cage, needs friendly home. KI 7-1637.
 German shepherd pups w/o papers, \$15, will be ready week before Christmas.
 Call now to reserve one. Mike, X7225 Linc.
 Westinghouse lg elec roaster w/std, perf cond, \$15. Call 324-2498 evgs.
 Air crib, "Skinner box," orig \$350, asking \$185. Wood, 876-7089 evgs.
 Sealpt Siamese kitten, f, very affec. X6736 or 876-1913.
 End tbls (2), step, coffee table, formica, set, \$35; Nat fin walnut coffee tbl, \$35;
 Chrome bread box, \$8. Call 354-0171.
 Skin diver's wet suit, almost new. Call 868-7823.
 Venetian blinds, 2, lg, 5'x9' ea, \$25 or best offer. X2180.
 Kneissel comb skis, 180cm, cable safety bindings, Kofax bottoms, yr old, exc
 cond. Jan, X647 Linc.
 Upright piano, gd cond, best offer. Call 864-0860.
 Vespa '64, 150cc, fine running cond. Bob Donnitz, X4132 or 876-2128.
 BR set, 6 pc, exc cond, almost new matt & box spr. Call 924-9033 evgs.
 Perfume bought abroad, Arpege & My Sin, also pkg w/4 kinds Chanel, never
 opened, cheaper than cost. Call 924-3707.
 Vespa '59, 150cc, \$75. Call Frank, X5820 Linc or 646-0371.
 Irish setter puppies, AKC reg, all perm shots, wonderful Christmas presents.
 Call 259-8197.
 Tires, 5.90x15 4-ply, \$10/pr. John, X3955.
 Single bed, \$20, also sheets & blankets; AM-FM radio, \$15. Ted Behr, X6660.
 Port dishwasher, 8 mos old, best offer. Woman's ski boots, 6 1/2. X6667.
 Polaroid deluxe color-pack camera, mod 100, nearly new, comp w/flash, portrait
 & close-up kit, \$95. W. Ryan, X6559 or 5476.
 Factory service manual for 3.8E type Jaguar, \$8. Call 864-0295 evgs.
 AR2X mahog spkrs (2), asking \$85 ea. CY 8-6508 evgs.
 Scott S-2 Spkr, orig \$200, now \$70. Call 491-7967.
 Head std skis, 6'9" w/bindings, P-tex bottom, \$70. Don, X6148 or 227-0109 evgs.
 Grey tweed Chesterfield coat, bl velvet collar, worn twice, 5, \$35. X3879.
 BMWs: '60 mod R60, \$550, '65 mod R695, \$975. Also wanted: gd used sta wgn,
 Comet, Falcon, Dart, etc, 1960-64. GA7-6353.
 Tubeless carbide spike snow tires (2), yr old, 6.50x14, exc cond, \$25. X2285.
 Freezer, chest-type, 10 cu ft, almost new, \$100 firm. Also meat slicer, \$10.
 Call 933-3149.
 Scott mod 350 stereo tuner, \$60. X3449.
 Ski rack for covert, \$10 or best offer. R. Alter, X7833 Linc or 449-0843.
 Catamaran 16', 9'beam, 26' mast, can be stepped by 240 sq ft sail, set dacron,
 set nylon, new 40hp Sea Gull eng. EX 5-7236.
 Maytag 9 cu ft refrig, yr old, \$100. Lee, X7340 Linc or 354-4634 evgs.
 Scott 299C stereo amp, 72w, \$80. McCarthy, X3157.
 Triumph Trophy, '57, 500cc, dual carb, racing ign, gd cond, \$375. Call
 876-8321.
 Dual therm gas log htr, \$25. GI 8-5003 Groton.
 Olympia port typwr & case. R. Wilson, 867-7928. Wanted: Peugeot 404 sunfr.
 C. L. Wilson, X5223.
 Honda '65, S65, less than 4K, very gd cond, \$225. Call 354-2443 evgs.
 Fireplace screen & equipment, \$15. X4926 or 648-9017 evgs.
 Port elec sewing machine. Call 324-2498 evgs.
 Coin collectors: last remaining lot of Commonwealth Games commemoratives.
 Eric Edman, X297 Linc.
 Tire & rim, 7.10x15, \$10. X3472.
 Sacro-pedic matt, twin, used only 6 wks, \$30. Eng tweed suit w/fur collar, \$35,
 Blue Eng tweed suit, \$30, off-wh in-between coat, 14-16, \$15. X5745.
 Br new 8.45x15 tires mounted. Bob Shine, X1232 after 5 p.m.
 GE elec clothes dryer, yr old, exc cond, \$100. Vernon Raine, X4765.
 Free: enchanting kittens, calico & tiger, house broken, innoc. X2908.
 Scott 65w stereo amp, 11/2 yr old, like new, any reas offer. X5886 or 868-
 8476 evgs.
 Free: affec, playful all black cat, m, 4 mos, housebroken. X2609.
 Kneissel red star 6'11" skis, \$65; Kastle wood, \$45, both w/Marker bindings;
 Molitor racing boots, 8 1/2, \$50. Throop Bergh, X2280.
 Panasonic tape rcdwr worth \$80, best offer. David Demers, X5311.
 New Sawyers 707Q slide proj w/trays, \$98. Call 646-8291 evgs.
 Baby items: carbed, playpen, swingomatic, jump-ch, all exc cond, very reas;
 also girl's clothes, infant to 3. Call 862-6979.
 Man's Humanic ski boots, 10W, exc, used 1/2 season. Bob, 926-1220 evgs.
 BSO Tues night series subscription (2), Orch BB 4&5, at cost. Peter, X4724.
 MG-TF-1500, Br racing green, Pirelli tires, new wiring, winter price, \$1000.
 Bob, 628-5620 evgs.
 '51 MG-TD black roadster, \$500. Call 275-7286 7 to 9 p.m.
 '54 Mercury, eng job, gd tires, R&H, \$60. John Sharp, X3270.
 '54 Ford wgn, body & eng carefully maintained, in exc shape, student must sell
 for financial reasons, \$200. Richard White, 212B Ashdown.

'56 Chevy wgn, solid, runs well, \$50. Bud, X6046.
 '56 VW, yours for \$1. Call 862-4159 evgs.
 '56 Mercedes 220S, gd cond, 60K, eng perf, \$400 or best offer. Wanted: very
 inexp house or apt in country for student fam, will work. Chris, X6788.
 '57 Plymouth, very gd running cond, snow tires, new Br, \$70. UN4-4665 evgs.
 '58 Chevy, \$50. X6269 or 354-5849.
 '58 Isetta, 20K, 40mpg, exc running cond, \$200. X3357.
 '58 Ford V-8, exc running cond, fall sticker. Joe, X3448.
 '60 Falcon wgn, gd tires, batt, R&H, dependable, \$95. Call 547-5744, 6-8 p.m.
 '60 Ford Fairlane 2-dr, R&H, gd motor, make offer. X2465.
 '61 Corvaair Monza 2-dr, auto, 18K, one owner, exc cond, \$575. X6051.
 '61 Rambler Amer convert, new eng, under warranty, R&H, p st, new batt, snow
 tires, sticker, \$600 or best offer. Dr. Foulkes, X4558.
 '61 Volvo, new ww's, shocks, R, oil, amp gauges, low mi, super, must sell,
 \$750 or best offer. Call 729-5618 evgs.
 '62 Comet wgn, auto, roof rack, \$595. X4922 or 862-6966.
 '62 Corvaair Monza 2-dr, white, \$400. Call 862-1178 evgs.
 '62 Falcon 2-dr, white, new br, 3 new tires, gd cond, \$550. X5068 or 643-5919.
 '62 TR Herald, gd running cond, \$400. Call 864-0074 evgs.
 '62 Stud Lark, 6 cyl, 2-dr, R&H, auto, 44K, 1 owner, snow tires, exc cond,
 \$350 or best offer. Larry D'Addario, X3175 or 247-9364.
 '62 Lotus Elite, 1220cc, Coventry Climax. Anderson, X7596 Linc.
 '63 Corvaair 4-dr, 4 on fl, blue. Call 266-3105 evgs. Also wanted: typing.
 '63 VW sedan R&H, ww's, reinforced bumpers, 35K, gd cond, \$700. Call 391-4422.
 '64 VW Kombi, gd cond, \$1400. Bob Smith, X5743 or 5755.
 '64 VW sedan, gd cond, best offer. Vitto, X5737 Linc.
 '64 Ford convert, AM-FM R, lug rack, very low mi, make offer. BE 2-9736.
 '65 Falcon wgn, auto, 12K, warranty in effect, asking \$1500. Joe Dagnese, X7059.
 '65 Pontiac GTO, 4-spd synchro, tripwr, p st & p metal br, susp option, never
 raced, perf cond, \$2250. Miller, 664-4907.
 '65 Tempest LeMans, fly equip. Dick, X4368.
 '65 VW sedan, exc cond, 9500 mi, \$1200 or best offer. Adolf Kitz, X6835.
 '65 Corvaair Corsa convert, 140hp, 4-spd positrac, ww's, R, pwr top, extras,
 \$1750. R. Kingsbury, X1422.
 '66 VW microbus, grey&wh, std, 6500 mi. X491 Linc.
 Allston, conv, rec renov 3 1/2 rm apt, mod K, \$92.50/mo. Andre, X7186.
 Arl Ctr, newly dec 4 rms, \$85/mo, no children. Call 643-5948. Also wanted:
 ride from Arl Ctr to MIT, mornings only. Michelle, X2695.
 Bedford, 6-rm ranch, gd cond, heavily wooded, fpLR, fl bsmt, birch cab K, 6
 yrs old, less than 1 mi from Linc, \$23,500. Paul Kelley, 275-9474.
 Bethel, Vt, ski rental, 5 rms, sleeps 14, ht & util, \$1200/season. Call 648-8288.
 Burl, 3 BR split entry contemp, walnut panel LR & DR, mod K, tile B, extra lg
 closets, nr 128, 3A & 62, sell or rent. Strong, X4368 or 926-1933 evgs.
 Camb, Maple Ave, pleas 5-rm apt, \$160 htd. Call 868-9430.
 Camb, mod apt, air cond, dishwasher & disp, security TV, bet Harv & MIT, 1 BR,
 balc, \$155/mo incl ht. Norman Gaut, X2551 or 491-7861.
 Camb, lg well-furn 1 BR apt, exc cond, newly ptd, fenced yd, storage, pkg,
 avail Jan 1, \$135/mo. Frank, X2420.
 Lakeside yr-round home, cent air cond, 45 mi W of Boston. Call 734-8540 evgs.
 Medfield, 3 BR Cape, LR/DRarea, 1 1/2 B, avail furn for 2-yr lease beg 2/1/67,
 \$180/mo. Also Kodak Retina III-C and Photonix prt tape rcdwr. Art. X6794.
 Manchester, N.H., 9.8 acres of land on Rt 101. J. Lloyd, X2723.
 Natick, 3 BR ranch, fpLR, tile B, mod K, gar, yr-round porch, lg fenced yd,
 1/2 hr to MIT, \$185/mo. Prof Donovan, X5881 or 655-4458.
 Newton Ctr sublet, 1 BR furn duplex, rough-hewn LR w/stone fp, disp, 1/2 house,
 pkr, married couple only, \$165/mo, yr lease. Call 527-5620.
 White Mtn ski lodge, Franconia, rms to lease. Jack, X5549 Linc or 277-4874.
 FOUND: watch, Materials Sci Bldg. Shelton Kang, X6904.
 Wanted: binoculars, 750 or 735 wide angle. X3485.
 Wanted: radio for 1965 Karmann Ghia. X2529.
 Wanted: mechanical drawing set, gd cond. Harvey, X2337.
 Wanted: couple to share ski lodge, Intervale, N.H. w/8 others, new Tech-built
 chalet, priv BR, children OK, dishwasher. Nicol, X3615.
 Wanted: gd set of skis & poles for under \$30. Bob Solomon, X4324.
 Wanted: used spinet console piano. DU 7-7263 evgs.
 Wanted: bus or tech typing by sec w/engineering & math bkground. Mrs. Smith,
 X3828.
 Wanted: HO gauge trains, switches, track, transformers. Les, X3530.
 Will swap Hayward sticker for Albany gar. Josephine, X6068.
 Wanted: woman to babysit ll am to 3 pm, \$1/hr, own trans, Needham. Mrs.
 Gleason, 444-1667 after 4:30 pm.
 Wanted: Lionel O gauge model trains. Call 272-0438.
 Wanted: musicians for Brookline band, no audition nec. Jordan, X439 Linc.
 Wanted: inexp sewing mach. Marcy, X5775 or 876-7368 evgs.
 Wanted: fem rmmate (20-25) to share 7-rm furn apt nr Harv Sq, own BR, no
 lease, \$35/mo. Cathy, X4425 or Sue, X2695 or 354-5974 evgs.
 Wanted: man's bicycle in gd cond. Shamir, X7129.
 Wanted: works of PG Wodehouse (novels, stories, etc.) R. DiGrazia, X4242.
 Camb ski club now forming, beginners, advanced skiers, all welcome. Call
 547-6094 evgs.
 Wanted: lute. X5788 or 267-2854.
 Wanted: typing. Margie, X4508 or 4831.
 Wanted: fem rmmate (21-25) for 2 BR, 2 B Chas River Pk apt, \$69.25/mo, avail
 Jan 1. Lynn, X1298.
 Wanted: htd garage to rent for car storage, pref Camb. Call 868-4639 evgs.
 Wanted: daily ride Tufts, Teele Sq area to MIT, 9-5. Linda, X2422.
 Wanted: daily ride Melrose Highlands to reach Student Ctr about 9 am. Myrtle
 Lester, X7050.
 Wanted: inexp waffle iron. Write Jane Patterson, 13 Winthrop St, Roxbury 02119.