

TOP TEN

Elmer C. Bartels, a scientific computer programmer in the Lab for Nuclear Science, was named one of the ten outstanding young men of 1966 last Saturday night at the awards banquet of the Greater Boston Junior Chamber of Commerce. But for Elmer it was a hard-won honor.

A hockey injury during his senior year at Colby College resulted in quadraplegia -- permanent paralysis of arms and legs. A determined Elmer returned to college in a wheel chair after 13 months hospitalization and therapy. Though his homework assignments had to be dictated to his wife, he was on the Dean's List, and after graduating, went on to receive a master's degree in physics from Tufts. He came to LNS a year and a half ago through the placement program, Just One Break, of the Easter Seal Society, and deals masterfully with the computer despite limited use of his hands.

Elmer and four others similarly disabled banded together in the hospital to form the Massachusetts Association of Paraplegics (MAP) in an effort to improve rehabilitation services and bring them to its members. Though it has minimal financial resources, the group has grown in three years to 150 handicapped and 150 non-handicapped persons, and is a primary source of communication and advice to people who suddenly find themselves severely disabled.

Another major concern of Elmer's is making MIT and the community at large aware of "architectural barriers," for people in wheel chairs. He can get into his office in Bldg. 24 easily, and from there into the main buildings without difficulty. But going to the Computation Center is a round-about trip because of curbing at its main entrance. Seminars at Project MAC in Tech Square and shopping at the Coop present an insurmountable series of steps. As Elmer points out, "I'm not the only one in a chair around here."

EARLY RETURNS

At the close of the first day of the MIT-Red Cross Blood Drive, 266 pints had been collected, indicating a good start on this year's campaign. A photograph of the newly completed main Institute complex and the workmen who built it, taken in 1916, is evidence of one man's appreciation of the MIT Blood Bank. Frank Cowie, who retired in 1961 after more than 15 years at the Institute and Lincoln Lab, used more than 100 pints of blood last year -- all of it from the bank. Other members of his family have also benefitted. His late father-in-law, who owned the picture, was associated with the construction of the main buildings when the Institute moved to Cambridge fifty years ago this spring.



Frank Cowie presenting a historic view of MIT to Vice President Vincent A. Fulmer.

To express the thanks of his family to the Blood Bank, Mr. Cowie presented the historic photograph to the Institute. It will be on display throughout the Blood Drive, both here and at Lincoln Lab next Monday and Tuesday, before going to take an honored place in MIT's archives.





Calder with admirer, Judy Kepes, daughter of Prof. Kepes.



Giant jig-saw puzzle.



Calder sup

No one sold balloons or hot dogs, but a festival atmosphere pervaded McDermott Court as the giant Calder stabile, the "Big Sail," was put together a week ago. Its parts were laid out like random pieces of a jig-saw puzzle for Alexander Calder's arrival from France to supervise its construction. Photographers of all descriptions, including movie crews

from Harvard and French TV, were on hand to record the proceedings. The weather was bright and cheerful, and the spring chill didn't discourage the curious crowd of people watching and voicing opinions. But as the "Big Sail" was put piece-by-piece until it was completed, joke-makers and more proper appreciation of a work of art

### ALERT

Beginning July 1, 1966, all persons who were 65 or older on January 1, 1966, will be eligible for Medicare benefits, but only if they are enrolled by March 31. If you don't enroll by then, you must wait until October 1, 1967 to join the program, at a higher monthly cost.

Those who reach 65 after last January 1, must sign up by the end of the third month following the month in which they reach 65. For example, if you become 65 on June 10, you must enroll by the following September 30. If you enroll within the three month period before your 65th birthday, Medicare benefits will be effective on the day you reach 65.

To enroll for Medicare, visit your nearest Social Security office, taking along a copy of your birth certificate. If you don't have evidence of birth readily available, don't wait for it, but give it later. If you are not yet 65, but have a husband or wife who is, your spouse should sign up for Medicare even though you yourself are not eligible. The important thing is that you sign up for Medicare before March 31.

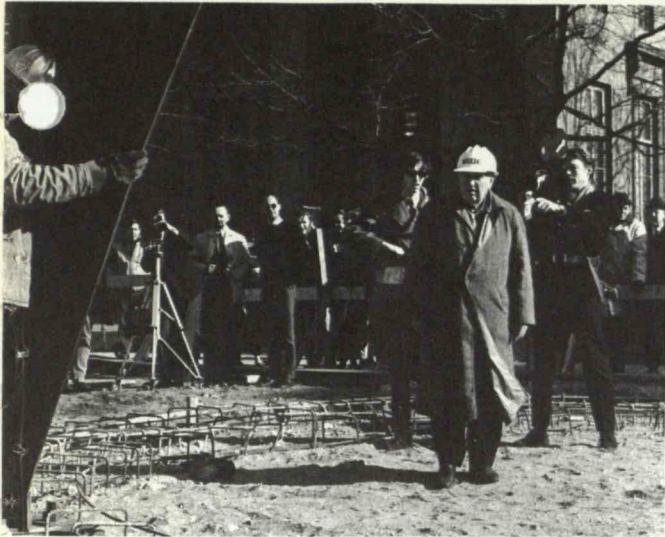
Blue Cross-Blue Shield will revise its coverage effective July 1 so that it doesn't duplicate benefits provided under either the basic or the voluntary supplemental Medicare programs. Consequently, all persons who are 65 or older should sign up for Medicare, including the voluntary supplemental program, even though they are working and are not receiving monthly Social Security Benefits.

If you have any questions about Medicare, call the Benefits Office, Ext 4271. A limited supply of enrollment forms is also available at that office, Room E19-230.

### SILVER BELLES

Two members and one associate member will be welcomed into the Silver Club at its spring meeting in the Student Center next Wednesday evening (March 30). Lorraine Foster of Lab Supplies and Bernice Wallace of Meteorology have each completed 25 years with MIT. Loretta

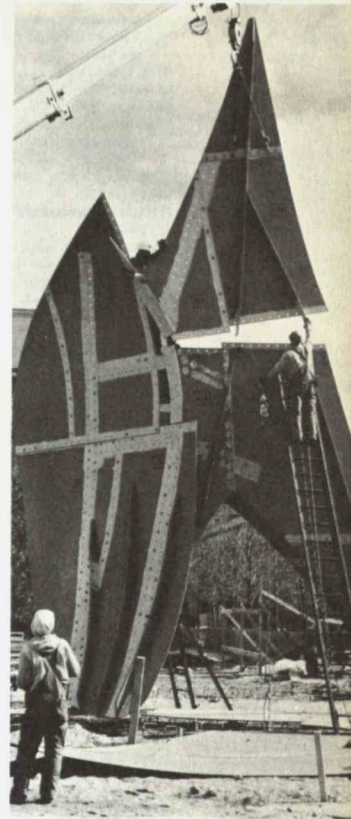




Calder supervising placing of first piece.



The sculptor and his work.



Photography by Robert F. Haiko

re on hand to record the  
light and cheery; even the  
curious crowds from  
t as the "Big Sail" rose  
eted, joke-making faded  
work of art replaced it.

Now the sculpture will be sand-blasted and painted, to take its place as the focal point of McDermott Court, the beginning of MIT's efforts to build a gracious urban campus. Trees and grass will be planted and walks and benches installed as spring arrives to give all of us a place of reflection and inspiration.

Mannix of the President's Office will become an associate member of the Silver Club after twenty years at the Institute.

Making major contributions to the evening will be Dean Emeritus George R. Harrison-- whose own history at MIT goes back some 35 years--and his wife, author Betty Cavanna. Not only will the dinner tables be fragrantly decorated with sprays of cymbidium orchids from their conservatory, but the program of the evening will feature the Harrisons with slides of Greece and Yugoslavia (on the eve of their departure to Spain). For six years they have been collaborating on "Around the World Today," a series of children's books on far-away places, with text by Mrs. Harrison and photographs by her husband.

### TENNIS, ANYONE?

The MIT Athletic Association will sponsor a mixed doubles tennis tournament open to the entire community on Saturday and Sunday, April 16 and 17. Anyone interested--male or female--should leave name, address and telephone number in writing with Mrs. Draper in duPont, Room W32-117, not later than Friday, April 8.

The only restriction on teams is that at least one member of each team must belong to the MIT community. The type of play will depend upon the number of entries. Prizes will be given to first and second place teams. Gerry Banner (Ext. 3205), manager of intramural tennis, will be happy to give further information on the tournament.

### INNER BELT SEQUEL

Last week the Massachusetts Department of Public Works announced its decision to route the Inner Belt through Cambridge along the west side of Brookline and Elm Streets, not near the MIT campus. The new road will be depressed below street level and will cross Cambridge two blocks this side of Central Square.



FOR SALE, ETC.

Argus C3 35mm camera w/case, flash unit & light meter, \$25. Ext 3958.  
Tires (4) 7.00x14, \$30; Gibson refrig, \$50; GE AC & DC port R, \$10. Arthur, ext 5274.  
Gray kitten, free. EL 4-0680.  
Springer spaniel puppies, AKC, 7 wks old. Call 862-4443.  
Guitar, orig cost \$75, will sell for \$25. Robert Katyl, ext 3220 or 729-3407.  
Child's sled w/seat; jump chair; stroller, all exc cond. Call 846-3238 evgs.  
Formosan grass revers rug, 10'x15' + 39 sq ft additional, \$20; Royal ofc model typwr, \$30; man's 3-spd bike; 35mm camera w/case. Call 491-1310 evgs.  
Hi-fi components, mostly Dyna. Jim, 254-8652 evgs.  
Young gerbils, sm cage pets, \$4. Ext 6084.  
Flexiglass windows (2) for 6 cyl Austin-Healey 1957-63, like new, \$15 ea. Sandy, ext 4211.  
Siamese kittens, m&f, 8 wks old, papers, blue, seal & choc points. Call 232-7943.  
Twin Hollywood beds w/spr & matt, white headboards, \$150. Dotty, ext 5894.  
Royal futura port typwr, perf cond, \$49. Robert Moore, ext 2345.  
Beagle-collie, 10 mos, housebroken, loves kids, all shots, \$10. Call 628-5996.  
PAS-3 faceplate & knobs, \$8. David Goodwill, ext 2893 or 491-1931 evgs.  
Beautiful LR, BR and K furniture, living state in May, must sell. Ext 5771.  
Maytag wr washer, exc cond, \$40; Olympia 19" port UHF TV w/earphone & stand, used only 4 mos, \$100. Call 944-9598 Reading.  
BSO Open Rehearsal tickets (2) for Apr. 24. Swift, ext 3387.  
Printing outfit, 2 presses, much type, tools, must sell, \$85. Jim, 944-2138.  
RCA Whirlpool custom auto washer, gd cond; Auto dryer, 6000w, exc cond. Robert Gundry, ext 7643.  
Wollensak 5250 4-trk stereo rcdr w/self-contained spkrs, \$150. Donovan, ext 4067.  
Drapes, 3 pr, long, w/match bedspread, exc cond, \$10; bkcase, \$5. Nancy, ext 1566.  
Custom made matched brass spheres w/attach brass & ivory pylon. Call E.W. Schafer, ext 6841.  
Ediphone frontier guitar w/hard shell case, \$180. Ext 1437.  
"Journal of Applied Physics," vols 35 & 36, (1964 & '65). Ext 5120.  
Aquarium tanks & equip; car compass, binoculars, low-pwr telescope; transistor R; tape rcdr; battery-elec Philco R; odd lots paper. Ed Nelson, ext 2280.  
Sealpt Siamese kittens. Call 254-0817 between 6 & 7:30 p.m.  
Honor accordion, \$225, will sell at first offer. Gourneloz, ext 2961.  
Mono hi-fi, 20w amp; transistor preamp; 3-spd intermix chgr in mahog enc; mahog spkr cab, 5 spkrs, \$80 or best offer. Stahle, ext 286 Linc.  
GE lg screen remote control port TV, 2 yrs old. Call 354-6178.  
Northland 57" skis w/bindings, yr old, \$25; 2 old heavy leather chairs, \$5 ea; 4-poster bed w/spr & matt, \$35. LaVerne, ext 4712 or 354-1591 evgs.  
Alaskan seal fur coat, gd cond, \$100 or best offer. Call 924-9033 evgs.  
Goodyear 6.50x13 snow tires, exc cond, \$20. Call 232-6671.  
Lowery Heritage organ, exc cond, \$1,100. Jan Gerardi, ext 7138 Linc.  
High-perf equip for Corvairs: Runyon headers, Mallory ignition, Offenhauser 4-carb set up etc., some new, some used. P. Bridenbaugh, ext 2171.  
Stereo components: all brands, new & used. Lenny Coris, ext 5150 or 491-3577 evgs.  
AR 4 spkrs (2); Fisher XI00-C; Garrard Lab 80 trnbl, \$250. Call 262-4774 between 2 & 4 p.m. weekdays.  
K set, 4 ch, formica top, \$30; Dunalt boy's 26" bike, \$25. FA 5-9236.  
Sheared raccoon coat, 14, perf cond, \$100 or best offer. Call 862-6160.  
Stroller, jump chair, car bed & walker, exc cond, \$26. Call 277-1779.  
Gonset GSB-100 SSB/AM/CW transmitter; Drake 2-B w/ 2A/Q rcvr & Q multiplex spkr, flawless cond, make offer. A. W. England, 547-5162 evgs.  
GE 12" port TV, 2 yrs old, exc cond, \$40. Call 646-0924 evgs.  
Koflach man's ski boots, 9 1/2, \$15. Bruce Kasse, ext 2539.  
Dresser, \$15; desk w/ch, \$15; couch, \$17; K tbl & 4 ch, \$25; end tbl, \$4; coffee tbl, \$6; dbl bed, \$35, port record player, \$10. Call 646-0647.  
Used sofa, needs reupholstering, green, best offer. Call 935-3645.  
Hotpoint 2-dr refrig w/freezer on top, exc cond, 9 yrs old, \$60. Harvie, ext 5470.  
Library, 57 vols, gd cond, best offer. Call 924-9033 evgs.  
Console record player, AM-FM R, attrac dark cab, \$95. Boh, ext 4170.  
Mahog 40"x60" DR tbl & 4 ch, \$30; wing-back ch, \$10; contemp LR ch, \$15; sofa-bed, \$40. Louise, PA 9-0877.  
Zenith Transoceanic rcvr, 8 bands, DC, BC 22 MC, \$95. Ext 5524.  
Frigidaire, 2-dr, \$15. AS 7-3778.  
Steel file cab, 2 drw. John Leach, ext 2420.  
Full-size 'cello, exc tone, new case, some music, \$125 or best offer. Call 623-2553 evgs.  
Royal std typwr, wide carriage, w/tbl, extra ribbons, \$100. Ext 2968.  
Empire wedding gown w/headress, textured silk A-line, 11-12. Call 868-2092 evgs.  
Folding bed, alum frame, 3" foam matt, used once, \$20 or best offer. Ext 4996.  
Honda Super Hawk, 305cc, 2500 mi, like new, must sell. Kitrosser, ext 5524.  
Vespa, '59, 150cc, spdmeter, tools, parts, eng overhauled at Christmas, must sell, need money badly. Harry Pellow, ext 3161.  
Honda, '63, 2200 mi, exc cond, elec starter, tools, manual, must sell, best offer. Paul Carregine, ext 3161.  
Honda, '64, mod C110, 4-spd trans, 50cc, windshield, 1200 mi, exc cond, used one yr, \$185 or best offer. Bill, ext 3988.  
Yamaha, '65, YGK, 80cc, 2K mi, 8 hp, \$300; also sig generator, 150kc to 180 mc, 9 bands, KC calibration of I.F. freq. exc cond, \$25. Greg, ext 3217.  
Vespa, '65, 90cc, 1500 mi, exc cond, \$225; Honda, '65, Super Hawk, 5K mi, gd cond & access, \$525. Carl, ext 83-2344 or UN 8-7341 evgs.  
Harley-Davidson, '65, XLCH, 3600 mi, like new, \$1150. Ext 6794 or UN 4-6758, evgs.  
Yamaha, '65, 55 cc, used 3 mos. Steve, ext 4935.  
'54 Olds, \$80. Ext 2172.  
'54 Bel-Aire, auto, \$30 or best offer; 2 Chevy wheels, 6.70x15 w/tires, \$10. Ext 3955.  
'55 Olds 4-dr, R&H, gd cond, \$100. A. Fukomoto, ext 2562.  
'57 Austin-Healey, 6 cyl, jump seats, exc cond, \$700. J. Hursh, ext 3597.  
'58 Chevy 4-dr, 6 cyl, auto, low mi, exc cond, asking \$300. Jim Russell, ext 5671 or 846-4194 evgs.  
'59 VW sedan, sunfr, only 47K mi, exc cond, will haggle. Jane Dennis, ext 7604 Linc or 484-8932 evgs.  
'59 custom 4-dr, V-8 sedan, auto, p st, orig owner, best offer. Call 598-0218.  
'60 Olds sta wgn, runs well, p st & br, auto, R&H, best offer. Call 782-1643 evgs.  
'61 VW sunfr, R&H, 70K mi, gd cond, \$600; Coldspot refrig, 120 lb freezer, \$100; GE hi-fi, exc cond, \$75; white dinner jacket, 40, used 5 times, \$15. Ext 6086.  
'62 Buick Invicta convert, p trans, st & br, exc cond, \$1395. Jerry, 369-6492.  
'63 Ford Galaxie 500XL 2-dr hrdtp, p st, bucket seats, leather int, Fordomatic on the floor, R&H, exc cond, \$1650. Joanne, ext 5451 Linc.

'63 Buick Electra convert, orig owner buying new car, 25K mi, \$2090. VO 2-5326.  
'63 Austin-Healey model 3000 convert, \$1950 or best offer. CE 5-8576.  
'63 VW sunfr, black w/ww's, exc cond, \$975. Wayne Tempelman, ext 1202.  
'63 VW lt blue sedan, push-out windows, AM-FM R, exc cond, maint record avail. Mrs. Weiler, ext 5596.  
'63 VW sunfr, exc cond, new tires, Blaupunkt R. Buzz, ext 3427.  
'64 Corvette Stingray coupe, 4-spd, positraction, metallic brakes, belts, 16K mi, like new, must sell, family growing. Dr. Malkin, ext 4710 or 868-2081 evgs.  
'64 Chevy II Nova SS, 2-dr, auto, fl box, 18K mi, mint cond, \$1425 or best offer. Mrs. Pond, 862-6035.  
'64 Falcon 4-dr, std, 14K mi, guarantee left, exc cond, \$1200 or best offer. Call Oda, ext 5846 or 566-3072 evgs.  
'65 VW sedan, green, 4,600 mi. Call 868-1287 evgs.  
'65 VW, must sell immed, leaving country. Ext 5821 or 782-1265.  
'65 Chevy Malibu super sport convert, bucket seats, asking reas price. Ross, ext 7282 Linc.  
'65 Plymouth sport fury convert 383, 4-spd, \$2600 or best offer. Ext 7358 Linc.  
'65 VW sunfr, R&H, all other usual blurb, worth \$1200, selling for same, want to buy VW fastback. Call 254-3226.  
'65 Triumph Spitfire, all trimmings, perf cond, \$1800, selling to buy bigger car. Regina, ext 870 (Haystack).  
'65 Chevy Impala 4-dr hrdtp, 6 cyl, ww's, R&H, p st & br, auto, \$2150. Call PR 3-2413.  
VW new red squareback sedan driven but 8 wks, \$1995. Call 944-1014.  
Arl, 6-rm house, mod K w/Franklin stove & lg pantry, lg yds & priv mountain, mid \$20's. Call MI 6-8474.  
Arl, old house, 6 BR, 2 B, lg rms, \$29,500. Wilson, MI 3-1115.  
Beacon Hill, 2 BR unfurn apt, K&B, avail immed. Call 742-1687.  
Beacon Hill furn pine-paneled studio apt, sublet 'til Sept, opt to renew, ht&hw incl, \$90/mo, no gas bills. Ext 5770 or 484-0620 evgs.  
Belmont, lg single fam house, exc loc, rec redee for sale. Call 484-4710.  
Billericia, 3 yr old ranch, 3 BR, DR, fp, 3/4 acre, quiet, 2 blocks to new school, avail June, \$17,500. Call 663-6782.  
Billericia, mod 3 BR duplex apt, 20 min to Linc, \$145/mo. Ext 6545.  
Brighton furn sublet studio apt, avail June 1, \$70/mo. Don, ext 1410 or 783-0498 evgs.  
Brookline apt, rec remodeled, 3 BR, lg LR & K, near MBTA, conv to MIT, avail June-Sept., opt to renew, \$195/mo w/some furn. Call 734-2849.  
Brookline, Cottage Farm area, summer rental, 4 BR, 3 B, LR, DR, mod K, fam rm, yd, 2-car gar, conv to shopping, avail mid June. M. Bloy, ext 2326.  
Brookline, 2 BR apt, new bldg, avail April 1, air cond, pking, \$165/mo incl ht&hw. Call 277-9115.  
Burlington, over-size custom ranch, 4 BR, dining area, fp LR, fin playrm in bsmt w/fp, full wooded acre. Call BR 2-1941.  
Burlington, 3 BR ranch, tile B, lg K, fpLR, forced hw heat, storm windows, wooded 1/2 acre, exc loc, low \$17's. Call 272-0146.  
Burlington-Bedford line near MITRE, 7-rm split level, 1/2 acre w/many fruit trees, lg playhouse, w-to-w carpet, many extras, \$19,900. Ext 3847.  
Camb-Belmont line, bsmt apt, paneled fpLR, 2 lg BR, mod K comp w/new refrig, lg mod B, \$150/mo, no lease, avail Apr. 1. Call ext 3344.  
Camb sublet, June 9-Sept. 9, comp furn, incl dishes, 4 lg rms, Maple Ave, \$160/mo. Call 868-9430.  
Camb, Porter Sq area, 3 rm unfurn apt, hw, pking, avail Apr. 1, \$75/mo. Russell, ext 4074 or KI 7-9019 evgs.  
Chelsea, 3-rm apt, exc loc, auto ht&hw, \$60/mo. TU 9-2997.  
Lexington, mod colonial 5 BR, 3B, 1 acre, \$41,900; Jacobsen Estate lawnmower, 24" reel, self propelled, can be ridden, \$50. Call 862-8558.  
Maine, overlooking Penobscot Bay, lg summer cottage, avail June, \$200. John, ext 635 Linc.  
Medford, off Forest St, 4 rms, all util incl, \$100/mo. Call 395-0523.  
Weston, 3 BR house to rent, June '66-Aug. '67. Ext 5624 or 899-0280 evgs.  
Winch, 9-rm duplex, exc loc, secluded but central, lg enc yd, nr sch & trans, \$220/mo. PA 9-1735 evgs.  
Woburn, 3-rm apt, very clean, mod, 20 min to MIT, \$115/mo incl ht, avail Apr 1. Call 933-1970.  
Wanted: 3 BR house or apt for visiting prof, June '66-Aug. '67. J. Hay, Smith College, Northampton, Mass.  
Wanted: fem rmmate, 25-30 to share 5 rm apt, own BR, Park Sq-Bay Village area. Call HA 6-8160.  
Wanted: used tent, gd cond. Art, ext 3461.  
Found: pin in main corridor Feb. 24. Call ext 2503 Tues-Thurs afternoons.  
Wanted: fem rmmate for Cent Sq area apt, own BR, \$37/mo. Call 354-7819 evgs.  
Wanted: ride to UNH (Durham) every Mon. eve, leave 5:30 return 9:30, will pay regular bus fare. Kathy Kane, ext 2424.  
Wanted: round walnut DR tbl w/pedestal base, 48"-54" dia. Call 235-4133.  
Wanted: used Eng type man's bike, 3-spd, reas. Ed, ext 1591.  
Black male mini poodle w/papers would like to meet congenial lady poodle. Joe, ext 6540.  
Wanted: tenor for Congregational Church, Watertown, rehears Thurs eve, service Sun morning, \$10. WA 3-0787.  
Wanted: piano, will pay moving costs. Ext 4446.  
Wanted: riders to Chicago area, living MIT 6 a.m. Mar. 26, arriv Chic around midnight. Call 3647 or 354-1984.  
Wanted: ride to and from Billericia, 9 to 5. Lee, ext 5323.  
Wanted: babysitter in my home, several hours each day. Call 354-2164.  
Wanted: typing-thesis, report, paper, book. Jean, ext 4406 or 662-8390.  
Wanted: woman's or man's used Eng bike. Call 266-7376 evgs.  
Wanted: fem rmmate for mod apt nr Cent Sq, pref oriental girl. Call 491-6340 evgs.  
Wanted: house in suburban country to rent for summer, couple, no children. Bob Filene, ext 1468 or 491-0015 evgs.  
Wanted: woman to cut, fit & sew several Indian cholis for saris, pay well. Miss Wheeler, ext 4878 or 262-3979 evgs.  
MIT male senior interested in looking after school-age children nights in exchange for room & board. Call 868-3222 evgs.  
Wanted: tricycle. Ext 2398 or 926-2856.  
Wanted: cast iron railroad stove about 18" wide, 36" long, 24" high. Ext 2250.  
Wanted: fem rmmate for furn apt, lg & spc, w-to-w carpet, fp, Bay State Rd, Jackie Miller, 266-2347 or 536-5594.  
Wanted: typing, Mrs. Turkel, ext 4547.  
Wanted: fem rmmates for 5-rm apt, 3 BR, Allston on carline, \$5833/mo. Call 782-6926 before 5:30 p.m.  
Ride wanted weekends to Amherst or New Salem, Rt 202, share exp. Lyn, ext 2528.