

TT Photo by Bob Lyon



Dr. Killian, Dean Johnson and Dr. Stratton at press conference which followed election of Dean Johnson as twelfth president of the Institute.

IN WITH THE NEW

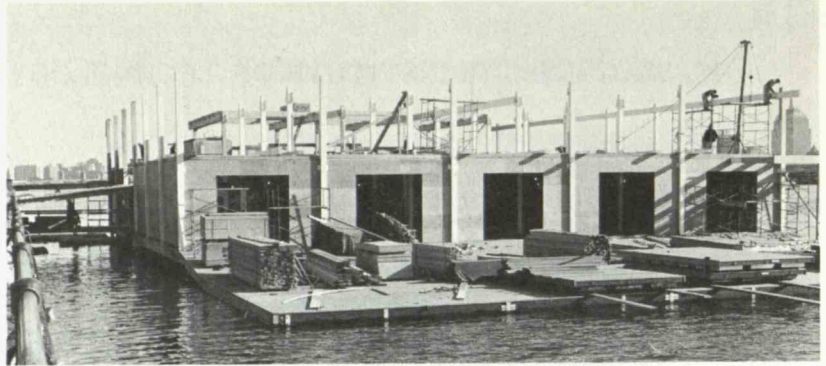
The concluding days of 1965 brought, perhaps, the biggest news of the year: the election of Dean Howard W. Johnson as twelfth president of MIT, to assume office next July 1 following the retirement of Dr. Stratton. In announcing the election by the Corporation on December 20, Dr. James R. Killian, Jr., Chairman, said of the president-elect, "Under his innovative and decisive leadership the Sloan School of Management has made rapid progress. As a participant in the Institute's central academic councils, Dean Johnson has contributed unfailingly and influentially to academic policy-making for MIT as a whole."

Dean Johnson had resigned from MIT to become, on January 1, executive vice president for corporate development at Federated Department Stores, Inc., in Cincinnati. With his family already settled there, he will serve temporarily as a consultant while making weekly trips to Cambridge. Later in the spring he will return to MIT for a transitional period before he takes office.

As an economist, Dean Johnson will be the second social scientist to be president of the Institute, and also the second youngest man (he assumes office the day before his 44th birthday). The first, who was also the youngest, was Francis Amasa Walker, a political economist who was president from 1881 to 1897, one of the periods of great development of the Institute. The great development during the administration of President Stratton will surely continue to flourish under Dean Johnson who accepted the presidency "with enthusiasm."



The space for the Space Center.



An even stroke, bringing the boathouse to completion.

CONSTRUCTIVE

At MIT 1965 was, most obviously, the year of the building. Five new ones officially opened: the Hermann Bldg. on the Sloan Campus; the Whitaker Bldg. on East Campus; the Bush Bldg. in the main complex; the Stratton Bldg. on West Campus; and the High Voltage Laboratory on North Campus. But it was a year of new beginnings too. Pierce Boathouse is progressing rapidly, with the rowing tank already finished; pile driving has started for

the Center for Space Research on Vassar Street; and excavation is beginning for the apartment tower which will be the next addition to the Sloan Campus. Plans are being made for the Center for Advanced Engineering Study, a new dormitory and a building for chemistry.

AULD ACQUAINTANCE

Awards and honors came to many this year: a medal of science from the President to Dr. C. S. Draper, head of the Department of Aeronautics and Astronautics and director of the Instrumentation Laboratory and to Prof. Winston R. Markey, also of Aero., the USAF exceptional civilian service award for his service as Air Force Chief Scientist. The Graduate House became Ashdown House in honor of its first Master and continuing advocate, associate professor emeritus Avery A. Ashdown. Prof. Harold E. Edgerton (EE) became a fellow of the Royal Photographic Society of Great Britain and received its silver progress medal. Two MIT alumni, Prof. Robert B. Woodward, '36, and Prof. Richard P. Feynman, '39, of the Harvard and California Institute of Technology faculties, respectively, were among the 1965 Nobel laureates recently honored in Stockholm. "God and Golem, Inc.," the last book of the late Norbert Wiener, was given the 1964 National Book Award as the outstanding work of science, philosophy and religion.

Familiar faces appearing in new roles this year included those of Prof. Ascher H. Shapiro who was appointed head of the Department of Mechanical Engineering in July, and Dr. Victor H. Weisskopf who will return January 1 as Institute Professor. Dr. Weisskopf has been on leave since 1960 serving as director general and scientific director of the European Organization for Nuclear Research (CERN) in Geneva, Switzerland.

...AND NEW FACES, 1965

An important factor in the Institute's steady progress is the stimulation of ideas brought to the campus by new people and visitors each year, and 1965 brought lots of stimulation.

Dr. Frank Press, formerly a member of the CalTech faculty and director of the Seismological Laboratory there, became head of MIT's Department of Geology and Geophysics this fall. The Department of Physics added to its roster the name of Dr. Philip Morrison, one of the nation's leading theoretical physicists and an outstanding teacher. MIT education pushed forward in new directions, too. A creative photography laboratory was established in the Armory and a subject in humanities in German was introduced in the Department of Modern Languages.

Outstanding visitors have also been in plentiful supply this year. Dr. Dorothy Crowfoot Hodgkin, the 1964 Nobel laureate in chemistry, was the first Abby Rockefeller Mauzé professor, an inspiration to women students. Two other Nobel prize winners came to MIT to speak during dedication proceedings this fall. Dr. William Shockley (Ph.D., '36) addressed the symposium honoring the opening of the Bush Bldg. in September, and Dr. George W. Beadle gave the dedication address for the Whitaker Bldg. this month.

VITAL STATISTICS

The official tabulation made this fall placed the Institute population at 17,707--including 7,098 employees, 2,807 faculty and academic staff and 7,408 students. Not included are 394 guests, fellows and emeriti. The utilities that kept us operating are impressive: 268,815,700 cu. ft. of gas; 300,320,928 gal. of oil; 53,559,600 kilowatt hours of electricity (blackout notwithstanding); and 620,219,636 pounds of steam.

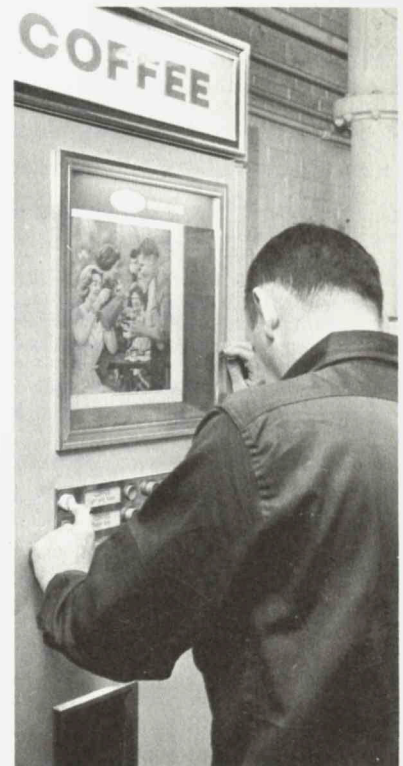
Communications with the world at large amounted to upwards of 35,000 pieces of mail arriving daily and 2,939,690 telephone message units costing \$147,029.10. Toll calls added \$320,032.01 to this, for a total bill of \$798,278.14 including charges for equipment and installation. Nearly two million messages were written on 19,772 of those ubiquitous pink pads.

Two new participants were welcomed into the Industrial Liaison Program, Standard Kollsman Industries, Inc., and Republic Steel Corp. Eight sections of the Supervisors' Information Program drew 97 participants during the year. It was a banner year for the Technology Press which published 21 paperbacks, 62 hardbounds and 8 editions in both bindings, with press runs totaling nearly 240,000 copies. In the Chapel there were 53 weddings and 3 christenings.

The Medical Department recorded 61,000 clinic visits and acquired a new X-ray machine. The Purchasing Office was as busy as ever filling requests--among others, two dozen whirligig beetles at \$1 each and \$5 worth of food for them. A more standard item was nearly 17 tons of 8 1/2"x11" ruled pads which translates into about 4.5 million pieces of paper.



J. W. Earley (center) of Northeastern, speaking at a session of the Supervisors' Information Program.



Vended this year: 550,000 cups of coffee; 200,000 sandwiches.

FOR SALE, ETC.

Full chains for VW, 5.50-5.90x15, never used, orig bag, \$8. Larsen, ext 7267 Linc. BSA 175 motorcycle, 1965. Ted Nygreen, ext 3782 or 536-1139.

Heathkit Shawnee 6 meter tranceiver, \$160; comp mono hi fi: AR trntrl, Shure cart, Bogen amp, 12" JBL D-123 spkr, RJ enc, all for \$140. Call 868-5857.

Free: sturdy kittens, bred in N. H. Ext 5668.

Lady's Samsonite lug overniter, 17" & 21", \$25, or will sell separately; green fl length gown, 12-14, worn once, \$10. Call 862-8771.

Delco snow tires, 13", like new, two for \$19. Call 646-7323.

Hand made & hooked rugs, very cheap, some for price of yarn. Call 924-5202 days. AR trntrl, '64, \$40. Ralph, ext 372 Linc.

Snow tires, 6.00x13 w/rims, used one season, ww's. Eleanor, ext 3581.

Vespa 90, 1965, loaded w/extras, 6 mos old, \$325. Karen Nesbitt, 275-8143 evgs.

Royal quiet deluxe tpwr, recently overhauled, \$45; 4'x8' blackboard, chalk & erasers incl, \$9. Ext 3647 or 354-1984.

Upright piano, gd cond, needs tuning, \$20. Call 969-7689 evgs.

Kay steel str, flat top guitar & case, \$19. Ext 3967 or 846-3063 evgs.

Circular saw, 8", tilting table type, Delta, \$15. M. Hazel, ext 3432.

Twin beds; refrig; TV; 20" bike; trike; stroller. Also '60 Rambler Amer sta wgn. Call ext 5596 or 923-8807.

Baby carriages, high chair, bathinette, best offer. Call 749-2569.

RCA 30" deluxe range w/clock timer, burner with a brain, window oven, gd cond, best offer around \$85. Call 484-4100 or 235-4133.

Royal std tpwr, wide carr, A-1 cond, w/typing tbl, extra ribbons, \$150. Ext 2968.

Lady's royal blue stretch ski pants, Austrian, 10, exc cond. Alice, ext 4161.

Crosley 21" tbl mod TV, working. Call Bob Jasper, ext 3846.

Movie camera, 8 mm, \$30; 35 mm Sears camera, \$25; Schick elec razor, new, \$10; Westinghouse roaster w/cab, \$20. Call 324-2498.

Free: upr piano w/bench; also, Dumont AM-FM radio, 3 spd rcd player, mahog console, \$12. Call VO 2-1943 evgs.

Multilith 1250 offset press, well used, \$230; 4 lg stainless steel sinks. Ext 3791.

Sm chest of drawers, file boxes, ceramic lamp, shoe rack. Call 232-6671 evgs.

Garcia surf rod, Langley surf spin reel, 11'4" overall, 1 yr old, used twice. Call 581-1745 between 6 and 7 p.m.

Kenmore 30" gas stove, 2 yrs old, exc cond, \$125. R. Diffley, ext 2180 or 2360.

Man's fig skates, 7, exc cond, \$10. Ext 5260.

Navy P-coat, brand new, 38, \$5. Ext 6002.

Head vector skis, slalom, 6'6" w/Head release, \$90; EICO AF60 60w amp, \$45; 2 healthy 6' rubber trees, 1 lg pot, \$20. Call 354-5878 evgs.

Wollensack 1580 4 trk full stereo rcd w/case, cords & tapes, \$225. Ext 5671.

Brand new unused stereo with 49 RCA lp's unplayed, \$300; Koflach ski boots, 8N, worn twice, w/boot tree, \$40. Ruth, 267-9559.

Stroller w/extra seat, gd cond, \$6. Call 924-6473.

Falcon snow tires 13", used one season, \$15. Mary, 969-5594.

Used wood paneling, approx 50 sq ft pecky cypress 3/4"; 150 sq ft oak, 1/4". J. Mitchell, ext 121 Linc.

Trombone, exc cond except needs minor repair, \$19. Call 944-2138.

Remington ofc mod typwr, exc cond, \$75. Call 625-1762 evgs.

Allfold baby carriage, blue-green, gd cond, \$22; Collier stroller, 2 seat tandem, \$12. Call AS 7-6827.

Oak 7-drw desk, best offer, you move it. WA 4-7835.

Bell & Howell 8 mm movie camera, auto elec eye, \$16. IV 4-7681.

Mod Danish walnut DR set, 6 ch, 2 capt, \$100; Browning AM-FM tuner, 15 tubes, chrome front, \$20. Wayne, ext 7726 Linc.

Boy's fig skates, 3, like new, \$5. BI 4-9295.

Man's Italian ski boots, 11 1/2 M, \$25. Call 862-5834.

Ski rack, \$12; comp basinette, \$10; lg desk, free. Katona, ext 5288.

Moving, no room, many furn & household items must go. Arthur, ext 2161 or IV 4-5622.

Motorola 24" tbl mod TV w/std, very gd cond, \$40 or best offer. Guido, ext 3220.

Lux sheared raccoon coat, 12, perf cond, orig \$600, now only \$125. Ext 2653.

Walnut desk, brand new, med size, \$30. Call 864-2204.

Skis, 6'3", steel edge, binding, steel poles, 2 prs each, \$35. Keily, ext 2288.

'54 MG TF, R&H, exc cond, winter storage \$5/mo, must sell. Ext 2488 or IV 4-8378.

'55 Ford, needs some work, eng and trans A-1, \$50. Dick, ext 5058 or 846-5092 evgs.

'60 Valiant wgn, exc running cond. Call 332-8715 evgs.

'60 Sunbeam Alpine, hrd & soft tops, overdr, Mich X tires, R&H, gd cond. W. Delaney, ext 7634 Linc.

'61 VW, black, exc cond, R&H, lighter, best tires. Lee, ext 3246 or 643-2970 evgs.

'61 Corvair 4-dr, auto, R&H, low mi, exc cond, \$600. Call 332-8838.

'62 VW, 22K mi, 7 mounted tires, \$900. Massive 78 rpm rcd collection, asking \$100, will discuss. Call 893-7974.

'62 Corvair Monza, sports coupe, auto, bucket seats, R&H, ww's, gd cond, \$850. Call MI 3-4977.

'63 Pontiac LeMans, convert, 4 cyl, R&H, new brakes, 2 new tires, gd running cond, best offer. Call 233-5501.

'63 TR spitfire, red, 18K mi, exc cond, R&H, \$1295. EX 6-8896 evgs.

'63 Tempest LeMans convert, pwr st & br, new motor, new tires. Mark, ext 1339.

'63 Rambler Classic sedan, std, twin traction, 31K mi. Frey, ext 3551.

'63 Ford Fairlane ranch wgn, 40K mi, blue, gd cond, \$1400. Call ext 2448.

'64 VW 1500S sedan, sliding roof, special uphol, ww's snow tires, R, lugg rack, etc. top spd 90 mph. Lengyel, ext 2109 or 5127 or LO 6-4161.

'65 Volvo 554 sport sedan, white, 4K Eur mi, R, all access, barely broken in. Call 266-0305.

'65 MG 1100 sport sedan, 4-dr, R&H, all access, exc cond, \$2250. Ext 4966.

'65 Mustang convert, 8 mos old, 287 V-8 eng, 4 spd trans, going into service, \$2300 or best offer. Framingham 872-4506.

Arlington house, 4-6 BRs, 2 B, old house, \$29,500. Prof. Wilson, MI 3-1115.

Back Bay apt, 2 rms, k'ette, Comm Ave just off Mass, \$85/mo. Call 536-3367 evgs.

Back Bay comp furn 1 rm apt, all utils, near trans, \$73.50/mo. Call 262-2493 evgs.

Back Bay, Comm Ave furn apt to sublet, LR, BR, K&B, \$130/mo. Linda, ext 4188.

Belmont, 4 BR apt avail Feb 1, near bus to Harv Sq, \$150/mo. Ed, ext 6074.

Belmont, 2 BR furn apt avail Feb 1, exc for couple with children, yd, pking, \$170/mo. Call 484-7483.

Lg bsmt apt for 2, 2 blocks from Harv Sq, fully furn, avail Feb 1, \$100/mo. Nancy, ext 4250 or 868-3472.

Camb furn studio, new B&K, Harv. St. \$100/mo, avail Jan 1. June, ext 5724.

Lexington 3 BR house, colonial, near schools, fin bsmt, gar, avail Jan '66-June '67, unfurn, \$200/mo. Call VO 2-0546.

N. H. weekend vac cottage, winterized, \$70/mo, quiet couple or sm family. UN 4-1838.

Furn 3 rm apt, \$100/mo incl heat and utils, single person only. Concord, EM 9-4477.

Sublet lux apt, 2 BR, air cond, indoor gar, soundproof, \$200/mo. Mr. Michaels, 742-6110.

Found: man's ring, red stone w/initial, near Bldg 20, Dick, ext 5058.

Swap: sticker for Hayward Gar for Winsor or Tech Sq lots. Ext 5494.

Wanted: fem rmmate to share lg Back Bay apt w/3 others, \$50/mo. CO 6-5529 evgs.

Trade: 10 books S&H green stamps for 10 books of Plaid. Susan, ext 4637.

Wanted: fem rmmate for Somerville apt, 15 min walk to Harv Sq, on Cent Sq bus line, \$35/mo plus utils. Miriam Levitt, ext 5656 or 628-5400 evgs.

Wanted: mature woman to care for 2 pre-schoolers, 1 infant, 2-3 days/wk, my home in Lexington. Call 862-0528.

Wanted: ride from Wayland vic rte 126 near So Lincoln line to MIT, 8-5. Ed Murphy, ext 4027.

Wanted: girl to share apt w/2 others between Harv & Cent Sqs, mod bldg, \$55/mo. Call 876-4254.

Will babysit, part or full time. IV 9-1177.

Wanted: typing. Mrs. Turkel, ext 4547.

Wanted: fem rmmate in Feb or Mar for 4 rm Watertown apt in mod bldg, close to bus line. Lynda or Janice, 926-2233 evgs.

Wanted: ride from Barrow St Dedham to MIT 7-8 a.m. Paul, ext 3348.

Will type theses, reports, papers, etc. Call 262-1586.

Wanted: used PA system, about 50 w, in gd or repairable cond, by teen-age combo, under \$50. Nunzio, ext 3976 or 444-9596 evgs.

Wanted: fem rmmate, working girl over 21. Sandy, 232-5291 evgs.

Will tutor in Russian. Natascha, ext 6068.

Wanted: fem rmmate to share mod 4 rm apt with sep BRs, exc Camb loc. Call 491-2585 evgs.

Wanted: male rmmate for Beacon St apt. Ext 4017.

Wanted: fem rmmate, 22-28, furn apt near Harv Sq. Fran Knox, 491-2368 evgs.

Wanted: ride from Weston entrance Mass Pike to IL7, 8-5. Ann, ext 1211.

Wanted: fem rmmate around 20 to share 3 BR apt w/4 others near Park Dr, MBTA, \$48/mo. Ext 3601 or 266-7427 evgs.

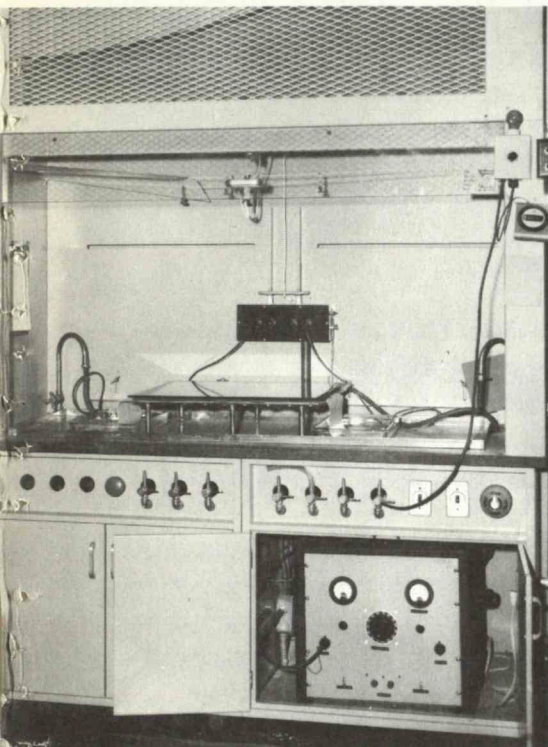
Wanted: beat-up skis that you want to discard. Ext 7753 Linc.

Wanted: ride to and from Cleary Sq Hyde Park, 9-5. Joan Salisbury, ext 3541.

Wanted: fem rmmate to share furn apt in Boston, over 21. Call 227-8552 evgs.

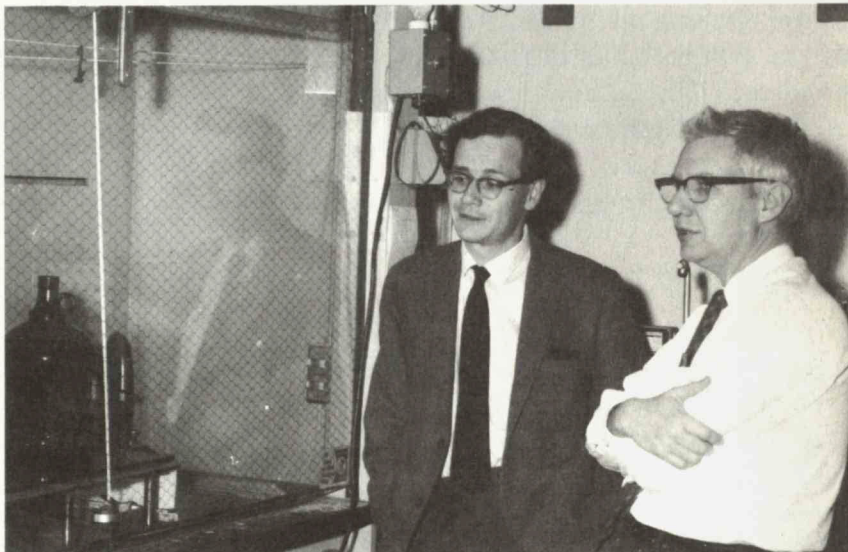
Wanted: babysitter, 8:15 a.m. -5:45 p.m. Mon through Fri in my home. Sandy, ext 4211.

ST Photo by Russ Clark



Electrophoresis hood, showing shorting bar (center), and grounded conduits.

ST Photo by Russ Clark



Profs. Ingram (left) and Levinthal observe an experiment in progress in one of Biology's electrophoresis hoods.

SPARK SUSPENSION

Earlier in the year, the electrocution of a student working with electrophoresis equipment at an eastern university prompted Professors Vernon Ingram and Cyrus Levinthal of the Department of Biology to re-examine similar department-

al equipment at MIT. For several years high voltage electrophoresis devices used here have had a number of safety features not included in the apparatus involved in the accident.

Working with Werner Steuernagel, also of the Biology Department, and Paul Blanchard of Physical Plant, Profs. Levinthal and Ingram have made several safety improvements in the devices. The equipment is now in a chemical fume hood, the sash of which, when opened, is electrically interlocked to cut power and to mechanically activate a shorting bar. Metallic parts, wire shielding and conduits to timers and other electrical devices are solidly connected to a grounding system. A warning light indicates that the system is energized. Another safety feature has recently been added: if one electrical interlock attached to the lead were to freeze closed when two are used in series, an additional light flashes on.

Since early summer a program of upgrading all similar apparatus has been completed, but more work remains to be done. Attention is now centered on lower voltage units which are used in the less favorable circumstances found in cold rooms.

OIL CHANGE

If you heat your home with fuel oil, you will be interested in an amendment to Fire Prevention Regulation No. 3, adopted in October of this year by the Massachusetts Department of Public Safety. The amendment, passed without a public hearing, states that, "fuel oil shall

not be delivered to any unenclosed tank within a building unless such tank is provided with a fill inlet pipe extending at least one-half and not more than two-thirds the depth of the tank and equipped with a means to diffuse the flow of oil." Most existing home oil storage tanks will have to be modified to comply with this law before Oct. 1, 1967. A limited number of copies of this section of the law are available from the Safety Office on a first come, first served basis.

YOUR COOPERATION WILL HELP

Pedestrian traffic at the 77 Massachusetts Ave. crosswalk has shown a marked increase since the opening of the Stratton Bldg. Concerned about the safety of persons using the crosswalk, the Institute has obtained the services of a City of Cambridge traffic patrolman during peak hours. Other steps have been taken to improve nighttime illumination of the area. Three modern street lights and a spotlight to illuminate the patrolman have been provided by the city, and a mercury vapor arc lamp on the Bldg. 7 parapet has been installed. To indicate clearly when pedestrians may cross safely, it is anticipated that "Walk-Don't Walk" lights will be added.

TOGETHERNESS

An incident recently occurred which points out how potentially hazardous experiments carried out at night can be. Having completed an experiment involving a highly toxic organic cyanide compound, the experimenter was removing a hose connecting a vacuum pump to a still when some liquid in the hose splashed into his mouth. Fortunately, another person was working with him in the laboratory and assisted him to the infirmary for medical treatment before a serious injury resulted.

Experiments in which a possibility of fire, explosion, electric shock or release of toxic materials exists, should never be done alone. Someone within earshot should be available to assist the injured and summon aid if an accident occurs. The section on "Working Alone" in the Safe Talk Accident Prevention Guide, which will be published in January, describes hazardous operations that should not be performed alone, and procedures which may be set up for checking with personnel working alone in laboratories.

REMINDER

Christmas trees and other evergreens brought into the house for the holiday season dry out rapidly, presenting an unusual fire hazard, and should be removed as soon as possible. Dispose of greens via the town rubbish disposal service or cart them directly to the dump yourself. If this is not possible and you have to burn them, first strip the branches off the trees, and build the fire away from the house. It is best not to burn evergreens and dried vegetation in fireplaces, for dried evergreens can burn explosively.

NO SKIDDING

Skids on ice and snow-covered roads occur when you try to change direction or speed of the car suddenly. To avoid skidding, do not spin the wheels when starting and maintain a slow steady pace without jerky steering while driving. If you do skid, try to remain calm. If rear wheels skid to the left, turn left. If they skid to the right, turn right. Turn the wheel just enough to correct the skid.

Shift into a lower gear when climbing a steep hill to give yourself enough momentum to reach the top without having to re-start on the incline which increases chances of a skid. To stop on ice and snow, pump the brakes rapidly. In winter, drive slowly and keep your distance. Even with reinforced chains or the new tires with metal studs, your braking distance is greater than on dry pavement.