

LIGHT FANTASTIC

Come five o'clock on weekdays, the Institute empties as its people resume their private lives. But sometimes it takes a few extra minutes to finish the day's business and get desks cleared off. Fortunately that was the case last Tuesday when the blackout blanketed the north-eastern U.S. On hand to guide MIT through the dark were: Philip Stoddard, vice president for operations and personnel; Jerome Barraford, superintendent of power and utilities; Miles Cowen, superintendent, of building services; and Lt. James Olivieri of Campus Patrol. Donald Whiston, general superintendent was missing, but not for long. Having just returned from a hunting trip, he was about to have a shower when the call came. When he arrived at MIT, he said he made it from his home in Kingston, "forty miles in forty minutes." This team, together with the skeleton night crew, quickly checked on emergency needs: the Infirmary, Clinic and Animal Labs had high priority.

The biggest problem in the darkened Northeast was getting power to start power company generators, and MIT supplied the necessary power to get Cambridge's equipment going. Verner Johnson, assistant to the chief engineer, and his staff were responsible for this feat which restored Cambridge's lights at least an hour ahead of when they would have been on otherwise. Paul Blanchard, chief electrician, and all but one of the Institute electricians worked far into the night taking care of necessary switching in the Cambridge-MIT interchange and restoring power in all of the MIT buildings. It would be impossible to mention all of the MIT people, including students, who played a hand in keeping the Institute running smoothly in the dark.

UNITED FUND AT MIDMARK

Checks and cards from as far away as Canada and California have arrived from absent MITers who want to be counted in on this year's campaign. Campaign Coordinator Ruth Dawson (Assistant Bursar) reported last week that at mid-point in the campaign about 44% of the returns were in, representing about 44% of MIT's goal of \$113,000, so there's still much room for improvement. Instrumentation and several academic departments are doing outstanding jobs in getting reports and returns in promptly, Miss Dawson said, and all solicitors are getting good marks for filing clear and accurate reports.

Both MIT and the Massachusetts Bay United Fund are trying very hard to complete their campaigns on time this year. Since the official close of MIT's campaign is tomorrow (Nov. 18), Miss Dawson and her helpers will appreciate any efforts solicitors make to return cards and checks as soon as possible.

TT Photo by Bob Lyon



Checking UF tally: Mrs. Elaine Petrino (Bursar's Office) left, and Miss Dawson. Stack of cards on right represents payroll deduction giving, a 2 to 1 favorite.

SCHOLARLY UPRISING

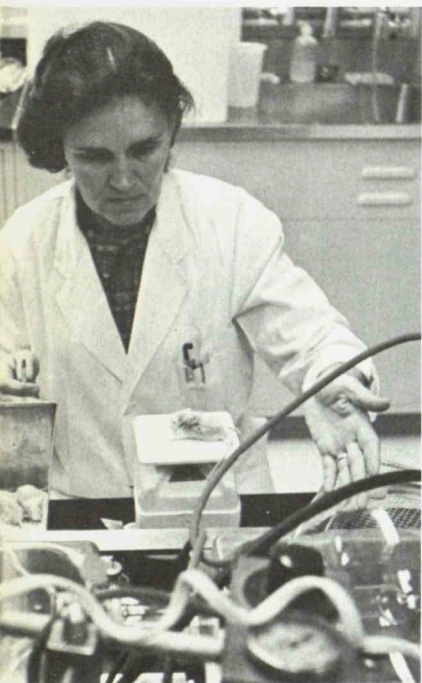
Raising the amount of tuition assistance and broadening the field of applicants has caused a sharp increase in the number of people studying work-related courses this year. For the past three years, an average of 408 employees have been enrolled in the Tuition Assistance Plan, but the boost in the maximum reimbursement from \$200 to \$300 per calendar year has sent the figure to 497 so far in 1965. In addition, the Tuition Assistance Plan for members of the research and administrative staffs, inaugurated this fall, has quickly found 150 adherents, about half of whom are studying at MIT.

Particularly popular areas for study among employees are accounting and data processing. Computers have become so useful that employees from throughout the Institute are taking advantage of tuition assistance to learn computer techniques. Most popular schools for this are Bentley, Northeastern, B.U. and Suffolk.

Brochures and application forms for both Tuition Assistance Plans have been distributed to all department and laboratory headquarters. With the second semester approaching, this is the time to discuss your educational plans with your supervisor.

A FOURTH FOR BRIDGE

Life Masters and novices alike are invited to an organizational meeting of the Instrumentation Lab Bridge Club to be held at noon today in the second floor classroom at 75 Cambridge Pkwy. Shuttle service is available every 15 minutes from 68 Albany St. for all interested on-campus bridge players. If you can't make it to the meeting, but want to be counted in anyway, call Sam Smith at ext. 1454.



Katalin St. Clair in laboratory of new Center for Life Sciences.

LIVELY INVITATION

As a prelude to dedication ceremonies for the new Whitaker Building, scheduled early in December, an Open House for the Institute community will be held from 3 to 5 p.m. on Friday, Nov. 19, in the Center for Life Sciences.

The Departments of Biology and of Nutrition and Food Science are the principal inhabitants of the Center for Life Sciences, but, because of the interdisciplinary nature of the research, members of several other departments are also involved. All of the laboratories will be open for inspection during the open house, and everyone in the buildings will be on hand to answer questions and explain procedures. Refreshments will be served to hungry guests in Rooms 56-201 and 56-510.

IN SERVICE TO THE COMMONWEALTH

More than 1,000 jobs will be available tomorrow (Nov. 18) in the Lobby of Bldg. 10 when the Commonwealth Service Corps comes to recruit volunteers for its programs in social action for Massachusetts. The C.S.C., the nation's first domestic peace corps, recently completed a very successful first year during which some 700 volunteers invested more than 240,000 hours in 30 projects.

Corpsmen may work full or part time and are reimbursed for their expenses. Housewives and senior citizens are encouraged to apply as well as students and working people. Additional information on the programs is available through MIT's Social Service Committee (Room 441, Student Center, ext. 2894), or from the Commonwealth Service Corps regional office at 15 School Street in Boston.

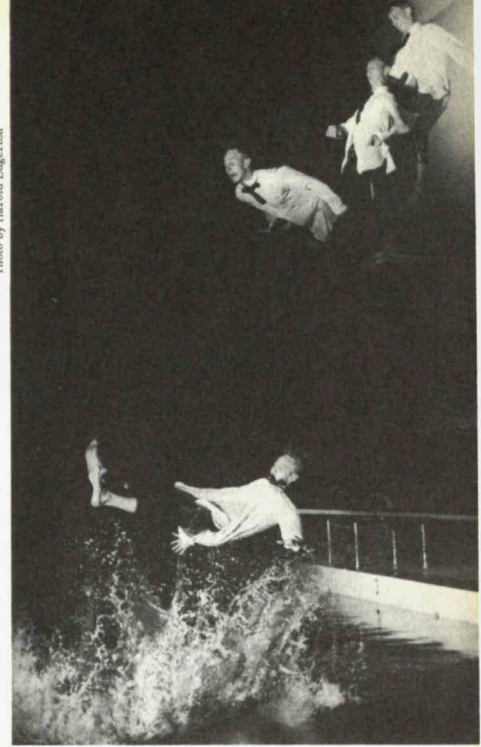


Rehearsing for "Yeomen" are (l. to r.): Henry Goldberg, '68, Ellen Stevens (Physics), and Herb Meily (Lincoln).

THE ENTERTAINERS

After last year's splashing sold-out success, the popular diving trio of Rick Kimball, Ron O'Brien and Frank Gorman returns this Saturday evening (Nov. 20) with Aqua Capers '65, sponsored by the MIT Swim Club. Also featured on the program will be the Wellesley Water Ballet in a synchronized swimming act and MIT's Logarithms with song specialties. Two performances--at 7 p.m. (\$1.50) and 9 p.m. (\$1.75)--will be given in Alumni Pool, and tickets may be reserved at ext. 4291.

Photo by Harold Edgerton



Making a big splash: Aqua Capers '65.

Competing for attention this weekend, the Gilbert and Sullivan Society will present "Yeomen of the Guard," Gilbert and Sullivan's only tragicomedy, in Kresge Auditorium at 8:30 on Friday and Saturday nights. The operetta is being directed by Steven Gilborn, instructor in Humanities, and Herb Meily (Lincoln) and Ellen Stevens (Physics) are playing leading roles. Other members of the cast and chorus are students from MIT and coeds from surrounding schools. Tickets may be purchased in the Lobby of Bldg. 10, or reserved at ext. 2910.

FLYING HIGH

When freshman Jim Yankaskas arrived at MIT this fall, he noticed the lack of a flying club and immediately set about correcting the deficiency. He quickly found materials and manpower to build a booth at the Activities Midway during Freshman Weekend and gathered together a group of about 20 flight-minded members. The MIT Flying Club, now a going concern, is open to all members of the community, both licensed pilots and learners. Monthly meetings, which feature speakers or movies on aviation, are usually held in the Spofford Room (Rm. 1-236). Special rates for plane rental and flight instruction have been arranged at Hanscom Field, where several models of Cessnas may be reserved by members. Any interested pilots or potential pilots may get in touch with Jim or Hank Perritt at ext. 3782 or with Bill Sadler at 868-0082.

MMMM GOOD!

This is the day to abandon the machines in favor of home-made sandwiches and potato salad--not to mention cookies and brownies--from the annual MIT Dames Bake Sale. From 8 a.m. until sell-out, the Dames will be dispensing all kinds of goodies in the Lobby of Bldg. 10 in their yearly fund-raising drive. Last year the sale yielded nearly \$450, good evidence of a healthy MIT appetite.

IT'S A BARGAIN!

An All-Institute sale will be held at the Student Furniture Exchange (224 Albany St.) tomorrow from 10 a.m. to 3 p.m. Featured items include stoves, refrigerators and double desks, but everything is reduced for clearance.

FOR SALE, ETC.

Westinghouse broiler oven w/cab, timer, dishes, \$50 or best offer. DE 2-1779.
 New 3-pc Eng Sheffield stainless carving set, \$20; 3 prs rose-beige 72" Fiberglass
 drapes, gd cond. BE 2-0484.
 Plants: lg geraniums, gardenia; also girl's teen-age clothes, incl coats, exc cond;
 evening gowns, worn once, cleaned, sizes 5-9. MI 8-6053.
 Sherwood S-3000 FM tuner, exc cond, \$60. Ext 7267 Linc or 861-0496.
 Stereo comps: Dyna, Scott, AR, KLIH, Dual, etc. L. Coris, ext 5150 or 491-3577.
 Davies 5 ft baby grand, dk mahog, gd cond, \$250. Call 877-0899.
 Motorola AM radio for VW, \$20. W. Byrd, ext 5939 or 876-9844.
 Philco TV, no pic, minor repair, gd stand, best offer. Call 734-3205.
 Royal port tpwr, elite, mint cond, all metal case, best offer. Call 782-5376 evgs.
 Preway Mark II pot type oil furnace, 4 yrs old, perf cond, \$40. George, ext 5577.
 Snow tires 8.00x14 on rims, exc cond, best offer. Ron, ext 5097.
 Refrig, gd cond, \$30. Call 648-3493.
 Lambretta '63 scooter, 2 seats, windshield. Chuck Nason, ext 2181 or 5933.
 Airequipt proj, Superba 44, like new, \$25; metal magazines, 50¢. Donovan, ext 4067.
 Lady's ski boots, 9M, \$5. Andover, 475-5873.
 Reverse dbl boiler, \$5; designer's 2 qt: saucepan, \$5. Call 262-0076 evgs.
 Nikon F w/ 1.4, brand new, just brought from Japan. Cho, ext 214 Linc.
 Baby crib 3/4 size w/matt & bumper, \$12. Call 354-5496.
 Man's 26" bicycle, gd cond, ST 2-2373.
 Garrard lo-fi changer, Pilot amp, Stentorian spkr, 9 yrs old, working cond, make
 offer. Call 864-2087 evgs.
 Carl Fischer trombone, silver plated, needs minor repair, w/corres course, \$45.
 Call 944-2138.
 Blue 3-cushion sofa, gd cond, \$15. TW 4-0482 evgs.
 BroilKing port, 11"x18", bakes & broils, yours for \$15. IV 4-6670.
 Walnut dresser, 4 drw, mirror, \$10; 15" tbl TV, works well, \$15. Ext 2396.
 Danish mod walnut 4 pc LR set, couch, coffee tbl, 2 chairs, \$100. Ext 2396.
 Snow tires, 7.50x14 studded, on wheels, \$25. Call 438-2524.
 Classic guitar w/case, \$35. Ext 4017.
 Air Force uniforms, some barely used, make an offer. Bob Lee, ext 3868.
 Youth bed & matt, \$15. IV 9-1820 6 to 9 p.m. only.
 Allstate 6.00x13 4-ply ww snow tires, used 500 mi, \$30. Bert, ext 2360.
 Kroyden golf clubs, woods: 1, 3, 4, & 5; 3-9 irons, w/bag, \$50. Bushnell, ext 7182 Linc.
 Hollywood conv wheel chair, chrome & naugahide, used 2 wks, \$100 or best offer.
 Bill, ext 5873 Linc.
 Sealpoint Siamese kittens, 12 wks old, \$25. Tony, ext 1465 or 491-8814.
 Snow tires, 6.00-6.80x13, \$19; 10' remote power control for Scott outboard, \$20.
 Call 646-7323.
 Dictionary, lg Jap-Eng, Eng-Jap; also wanted: H. Wehr's Complete Arabic-Eng, Eng-
 Arabic. Ext 5661.
 Bell&Howell 8mm mod 418B w/elec eye, power zoom, cart load, case & pistol grip,
 perf cond, listed \$285 will sell for \$119.50 firm. Ext 3425.
 Affec black male kitten, 4 mos old, Ext 2262.
 Snow tires, 7.50x14, 1 rim, used 4 mos, \$25. Ext 5310 or 272-3178.
 Wooden storm-windows, common sizes, \$1 each. Fisher, ext 5571.
 Day sailer, 18', Fiberglass hull, dacron main & jib, trailer & new outboard, many
 extras, will sacrifice for \$650. Pat, 944-2138.
 Brand new port sewing mach, never used, \$100. FI 4-5609.
 Iguana, 20" with cage, \$3. Call 326-3206 after 3 p.m.
 Ski & luggage rack, sturdy, almost new, \$10.50. Ext 5907.
 Goodyear 7.50x14 suburban tires, slightly used, best offer. Ext 3485.
 Middle-aged but sound port tpwrs: Corona std & Skywriter, \$20 ea. Call 491-1647.
 Gray 3-pc BR set w/matt. Jackie, ext 6484.
 Cornices, 75, 103, 115 in, custom made, scalloped, never used, \$15 ea. Anne, ext 4895.
 Reiker woman's ski boots, 7N, gd cond, \$20. Ext 5302 Linc.
 Man's hockey skates, 11, \$5. Hadwig, ext 4546.
 Atlas Plycron 6.50x13 ww tubeless tires, low mi, 2 mounted on Corvair rims, all
 3 for \$30. Grams, ext 5524.
 Lambretta, '63, 175, spare tire, shocks, disc brakes, batt, \$150 or best offer.
 Mary, ext 7422 Linc.
 Affec house trained poodle, needs space to run, devoted master, \$50. Call 876-9343.
 Polaroid auto 100 color pack w/flash, yr old, list \$144.95. Don Dewey, ext 82-201.
 Almost new table tennis table, \$25; 50 gal. elec water heater, \$35. Call 862-6445.
 New tire, 7.50x14, tubeless bw, \$15. Jerry, ext 7124 Linc.
 Bell&Howell TDC 35mm slide proj, \$15; Radiant proj screen, \$5; Conlon ironer,
 \$15. MI 3-1414.
 Crown graphic 2 1/4x3 1/4 w/case, many access, \$150. John Leech, ext 2420.
 Admiral 9 cu ft refrig, \$50 or best offer. Call 277-8084.
 TVs needing minor repair; 30"x40" mirror, \$10; table, \$5, wardrobe trunk, \$5;
 other furn & housewares. Arthur, ext 2161 or IV 4-5622.
 Signal generator, 5 bands, suitable for R-color TV servicing. Ted Julia, ext 4546
 Pair 12" coax spkrs in L-shape matched encls, \$40 firm. Don Kenagy, ext 2171.
 Hallett & Davis baby grand piano & bench, gd cond, \$100. Ext 2416.
 Formica K set; \$30; slide rule & case \$9; leaf tbl, \$6; US mike 34 VTVM, \$25.
 Call 536-0813 evgs.
 Admiral 21" TV, requires new pic tube, otherwise gd cond, best offer. Ext. 6083.
 BMW R-69, 1959, 16,000 mi, very gd cond, \$700. Call 491-0852.
 Lionel Train, 2 tiers, wooden frame, many extras, will deliver, best offer. Concord,
 EM 9-6036.
 '48 Cadillac hearse, well preserved, exc motor. Janet Hurley, ext 2566.
 '54 MG TF, Brit rac green, R&H, tonneau, exc cond, must sell, best offer. Ext 2488.
 '55 Ford sta wgn, 6 cyl, std, royal blue. Call Dave, 484-6213 evgs.
 '56 Chevy sta wgn, 4-dr, auto trans, p br, R&H, gd mech cond, \$100. Call 876-7245 evgs.
 '56 Pontiac Catalina 4-dr, auto, gd tires, R&H, gd cond. Jan, ext 647 Linc.
 '57 Imperial, fl power, exc cond, best offer. Ext 6153 or 646-8298 evgs.
 '57 Ford sta wgn, inspected, new motor, gd cond, \$200. Ext 5280 or 259-9572.
 '57 Chevy convert, black, p st & br, auto, R&H, \$400. Bill Brower, ext 2961.
 '57 Chevy, 6 cyl, auto, gd shape. Ext 2576.
 '57 Ford Fairlane 500, 4 dr, gd running cond, \$125 needed. GR 9-8621.
 '58 Chevy, 4 dr, inspected, 1 owner. Ext 5808 Linc or 369-5646 evgs.
 '58 Ford convert, all power, new rebuilt eng, 4 new tires, no body rust, will sac-
 rifice. EL 4-0862 evgs.

'58 Ford sta wgn, 4-dr, T-bird eng, cruissamatic, some rust, \$200 or best offer.
 Also 1962 Hamilton gas dryer, perf cond, best offer. Ext 4120.
 '58 Chevy, R&H, new tire, \$200 firm. Call 354-5496.
 '59 Fiat 1100, 4-dr sedan. Call 259-9722 evgs.
 '59 Lark, gd cond, reas. Call 266-4624 evgs.
 '59 TR3, Brit rac green, R&H, tonneau, exc cond, \$750 or haggle. Call 776-9747.
 '59 Chevy sedan, auto, p st, best offer. Glenn Mamon, ext 3584.
 '59 Rambler classic, 4-dr, std, R&H, new muffler, gd tires, gd cond. Call 969-
 8379 evgs.
 '59 Rambler Amer, new clutch & trans, anti-freeze, R&H, \$300 or best offer. Call
 LO 6-6629 evgs.
 '60 Ford, 6 cyl, std, 2-dr, 40K mi, motor gd, body minor dents & rust, \$300 or best
 offer; '61 Chevy, 6 cyl, std, 4-dr, 90K mi, runs like charm. Dick Wright, ext 1583.
 '60 Corvair, stick, 52K mi, well cared for, \$550 or best offer. Pete Stokely, ext 4546.
 '60 VW microbus, deluxe, rebuilt eng & trans, best offer; Northland monarch skis,
 marker toeepiece, Dover release, \$28; Selmer Bundy clarinet, like new \$85; Heath-
 kit DX-20 ham transmit, 10-80 meters, 40 meter crystal, antenna. Call 868-9052.
 '60 T-bird, \$750 or best offer. J. Savarese, WA 4-8497.
 '60 VW, R&H, gd cond, \$495. H. Pritchard, ext 4946.
 '60 Chevy Impala convert, p st & br, exc cond, \$650. Call 592-7533.
 '61 Rambler classic sta wgn, 6 cyl, std, \$600. H. Band, ext 4620 or 275-8575.
 '61 Chevy Impala convert V-8, p st & br, auto, 37K mi, best offer. BE 2-9736.
 '61 Rambler Amer convert, R&H, exc cond, 1 owner. Lynn, 536-3628 evgs.
 '61 Cadillac, white, 4-dr, hrdrtp, fl power, new tires, \$1,850. Call 864-6889 evgs.
 '61 VW, extras, exc cond inside & out, \$800. Call 692-6855.
 '62 VW, 41K mi, exc cond, \$795. Call 782-4173 evgs.
 '62 MGA roadster, ww's, R&H, \$1,200. Call 935-2499 evgs.
 '62 Chevy II, 4-dr, 4 new tires, 2 snow tires, 1 owner, \$850. Call 395-6088.
 '62 Buick Skylark convert, auto, p st, R&H, gd cond, \$1,200. Call 876-2417 evgs.
 '62 Rambler wgn, auto, R&H, white, \$800. Call MI 3-9799.
 '63 Porsche, super, cab, 33K mi, \$2500. Ext 1200.
 '63 Ford Falcon Futura, convert, auto, blue, \$1,225. Call 491-1194.
 '64 VW, exc cond, seat covers & belts, \$1,250. Call 868-0715 evgs.
 '64 Buick, 2-dr, hrdrtp, std, p st, white. J. Boyle, ext 820 Hanscom Field.
 '64 VW sun roof, 19 K mi, R&H, exc cond, grey, \$1,400. Bill, ext 1382.
 '64 Corvair Monza, exc cond, best offer. Linda Johnson, ext 5159.
 '64 VW, sun roof, reg servicing, lt blue, \$1,200. Fred Brush, ext 3237.
 '65 VW, exc cond, 7K mi. Mrs. Kent, ext 5655 or TR 6-7095 evgs.
 '65 Mustang hrdrtp, 260-V-8, 3 spd trans, burgundy & tan. Al Hood, ext 1346.
 '65 Mustang, 4 mos old, R&H, ww's, spotless, take over payments. Call 326-8755.
 Arlington, 6 rm apt, 1st fl of 2-fam house, 10 min to MBTA. MI 3-7068.
 Arl Ctr, sm 5-rm single house, all gas, priv yd, pking, adults, avail mid-Nov or
 Dec 1, \$120/mo. MI 8-7464.
 Beacon Hill 3 rm furn apt, \$86/mo. P. Frankel, ext 1234.
 Bedford Gdns, 2 BR apt in duplex ranch, fl bsmt, avail now, \$110/mo. Call 274-0695.
 Belmont, 3 or 4 BR home, mod K, 1 1/2 B, yd, near trans, avail now. IV 9-0496.
 Billerica, 3 or 4 BR cape, w to w carpet, lots of land, 10 min to Linc, owner asking
 \$18,500. Call Billerica 663-2884.
 Camb, furn 2 rm apt, exc loc, all utils, leas req, woman only, avail Dec. 1, \$77/
 mo. Call VO 2-1943.
 Camb sublet BR-LR comb, B & K, 5 min from Harv Sq, avail end of Jan. Call 876-3140.
 Hull, house, scenic loc, 6 rms, 1 1/2 B, \$10,500. Gene, ext 3956.
 Lex, 7-rm Colonial, 3 BR, fpLR, pine-panel den, \$23,500. Owner, 862-3194.
 Lincoln, new 4 BR colonial cape, sunken LR, sundeck, gar, \$29,950. VO 2-0653.
 Manomet, yr-round new cape house, 2 BR, LR, elec K, tile B, fl bsmt, oil heat,
 near ocean. Call IV 4-6532 or CA 4-8862.
 N. Reading, 6-rm ranch, fpLR, DR, fl bsmt, alum windows, \$18,900. Call 664-4465.
 Somerville, furn lg 2-rm apt, K'ette, all utils, adults. Call 666-3190.
 Sudbury, nr Marlboro line, 8-rm house, LR w/ wall to wall carpet, comp equip K,
 3 BR, patio & pool. Sell \$29,900 or rent at \$225/mo. HI 4-1845.
 Watertown, 6-rm mod apt, exc loc, gar, \$135/mo. WA 4-7950.
 Westford, exc loc, ll mod houses, tile B, K, air cond, gar, vac lots, priv beach.
 E. H. Bartlett, ext 3119 or 876-3208 evgs.
 White Mtn farmhouse, handy to ski areas, for rent. John, ext 4818.
 Sm apt, central loc, 15 min from MIT, all utils, reas. EL 4-0862 evgs.
 Beirut, spac 3 BR duplex, fl B, 2 1/2 B, playroom, avail immed, \$190/mo. Ext 6675.
 Reward for return of man's green slacks lost in Oct between Charlie the Tech Tailor
 and the Armory. Call 769-1890.
 Wanted: used man's bicycle & 2 prs skis. Steve Colburn, ext 4685.
 German woman will custom knit ski sweaters, baby things, etc. Call 337-1785.
 Third fem rmmate needed for mod apt near Harv Sq, \$73.33/mo. M. Greenberg,
 ext 6064 or 491-7298.
 Westgate couple will babysit evgs and wkends in your home. Call 868-5354 evgs.
 Wanted: record player, fairly gd cond, reas. Call 566-0229.
 Wanted: typewriter for student taking typing. Call 275-7897.
 Wanted: thesis typing. Mary Ellen Shoemaker, ext 2335.
 Wanted: small upright piano, gd cond. Call RE 4-7975 after 12:30 p.m.
 Wanted: tenors & basses to sing in madrigal group. Anne Kaplan, 354-2577.
 Wanted: used ironing board, under \$4. Eban, ext 3194.
 Wanted: typing. Barbara, ext 5495 after 3 p.m.
 Wanted: ride from College Ave, Somerville-MIT, 9-5. Janice, ext 3518.
 Wanted: female rmmate w/apt. Call 267-5140, evgs.
 Wanted: mod price small used piano. Mrs. Washburne, ext 3363 or 491-6294 evgs.
 Wanted: used typewriter. Ray Battistelli, ext 461 Linc.
 Wanted: ride from Apple d'Or-Nobscot area Framingham-MIT, 9-5. Ext 2405.
 Wanted: seamstress to sew simple, unlined patterns, materials supplied, will pay
 reas price. Call 354-7191 evgs.
 Wanted: girl to share lux apt at Spy Pond. Call 648-1658 evgs.
 Wanted: wheels and/or snow tires for Hillman. Call 646-7323.
 Wanted: fem rmmate, 21-25, own BR, near Harv Sq. Call 868-0573 evgs.
 Wanted: typing to do at home, envelopes, form letters, etc. Call ext 4136.
 Wanted: ride to and from Medford Fellsway. Joanne, ext 5361.
 English couple would like to rent reliable car, Feb & Mar, 1966. Rod, ext 2256.
 Wanted: typing, engineering, tech, statis, can use dictating equip. CA 7-9785 evgs.