

TT Photo by Bob Lyon



Freshmen registering for orientation program. Expected total student body this year: 7,300.

NEW CLASS

With the first day of classes behind them, the 963 members of the Class of 1969 have embarked on a curriculum very different from the one previously offered to freshmen. The new curriculum is the result of long study by the faculty. Its core--physics, mathematics and chemistry--has been modified and made more flexible to allow for differences in secondary school preparation and to encourage intellectual initiative in the students.

During a five-day orientation period last week, the new class was introduced to the faculty members who will advise them. They also went on tours of many of the special facilities on campus, held discussions on subjects ranging from "Utopia" to "Plasma Chemistry," and attended steak fries and tours of Boston arranged by living groups.

One of the largest classes ever admitted, the freshmen come from every state but North Dakota and from 47 foreign countries. New coeds number 48. More than 100 freshmen already have MIT associations through members of their families who are alumni, and four have fathers who work here: Frederic W. Watriss, Jr., son of F. W. Watriss, '41, MIT assistant treasurer; David A. Fay, son of Prof. James A. Fay, '47, Mechanical Engineering; Theodore A. Lundquist, son of Harold A. Lundquist, project technician in physics; and Stephen F. Masucci, son of Francis A. Masucci, senior technician in Instrumentation.

Nearly 83% of the Class of 1969 were in the top ten per cent of their high school classes and 70 of them are holders of National Merit Scholarships. They were active in all manner of extracurricular activities in high school: 138 were elected class or school officers, 192 won letters for varsity sports, and 373 were officers of science groups, participated in summer programs of the National Science Foundation or were science fair winners.

DEDICATION

An open house for the MIT community will be held from 3 to 5 p.m. Wednesday (Sept. 29) in the new \$6 million building for the Center for Materials Science and Engineering. According to Prof. Robert A. Smith (Physics), center director, visitors will be welcome to inspect facilities and laboratories. The building dedication will be at 3 p.m. Friday (Oct. 1) in Kresge and will be preceded on Thursday and Friday morning by a symposium on materials research at-

tended by scientists and engineers from throughout the world. Dr. Killian will preside at the dedication and the principal address will be by Dr. W. O. Baker, vice president for research at Bell Telephone Laboratories. Other dedication speakers will be President Stratton, Dean Wiesner and Dean Brown. Symposium banquet speaker Thursday evening will be Dr. Harold Brown, now Director of Defense Research and Engineering for the Department of Defense who, the following day, will be sworn in as the new Secretary of the Air Force. Dr. William B. Shockley (Ph. D., MIT, '36), of Stanford University, Nobel laureate in 1956 for the transistor, will speak at the symposium luncheon on Thursday.

GRAND EXIT

At a surprise party given by Prof. Walter Wrigley (Aero), more than a hundred friends and associates from Aero and Instrumentation gathered to give good wishes to Joan Duffield Ginn as she left the Institute. She and her husband, Dana, will go to Rochester, N. Y., where Dana will work at Eastman Kodak and Joan will work at being a full-time housewife.

Joan came to MIT nearly 11 years ago (in November) as Prof. Wrigley's secretary. But her commitment to the Institute did not end at 5 o'clock. Ever since she came, she has been

an active member of the Community Players and has appeared in more than 30 plays the group has produced, and a number of Dramashop productions as well.

A painting of MIT, made by Ray Parks (Instrumentation) was given to Joan along with an enormous poster card--also a Parks creation--commemorating all of the plays and people of her days at the Institute.



Dana (left) and Joan Ginn, holding MIT portrait presented to Joan by Prof. Wrigley (center).

TT Photo by Bob Lyon



On the beach in Westport, Fran Bragg (Aero) found a buoy, presumably from a Russian fishing boat, and translated its message -- a novel suggestion for international trade: "We to you some lobsters, but you to us some girls!"

REGISTER AND VOTE!

Elections for the Cambridge City Council and the Cambridge School Committee are coming up. To encourage a good turnout at the polls, special registration arrangements have been made.

A registration mobile will be open as follows:

Sept. 22 & 23, 1-6 p.m. --Sennott Park
on Broadway
Sept. 24 & 27, 1-6 p.m. --Stop & Shop
Memorial Dr.
Sept. 30 and 1-6 p.m. --Harvard Sq.
Oct. 1 & 2

Evening registration hours:

Oct. 4 & 5, 7-9 p.m. Morse School
Memorial Dr.
Oct. 5, 7-9 p.m. Lobby of 100
Memorial Dr.



Bob Radocchia of Walker (left), and Fred Grotheer of Student Center dining service.

FOOD FOR THOUGHT

Opening tomorrow in the Student Center is the Harold E. Lobdell Dining Room, named in honor of the late Dean of Students and Executive Vice President of the Alumni Association. The Lobdell Room and the Grill Room, not yet ready, will be open to the entire Institute and operated by Stouffer's, as are the cafeterias in Ashdown House and Walker. Prices will be comparable with those in the other cafeterias, but the menu will be different and completely a la carte.

Fred Grotheer, formerly director of Stouffer's dining services at the Reader's Digest and at IBM in Peekskill, is manager of the dining service in the Student Center. His staff of more than 80--including about 40 students--work in shining stainless steel and glass kitchens and dish-rooms with the most modern equipment available.

Although the official opening of the dining service is tomorrow, Fred and his staff have already staged two private dinners: a reception and buffet for 400 members of the Alumni Association on Sept. 10 and a "Big and Little Sister Banquet" for the Association of Women Students last Wednesday evening.

GETTING TO KNOW YOU

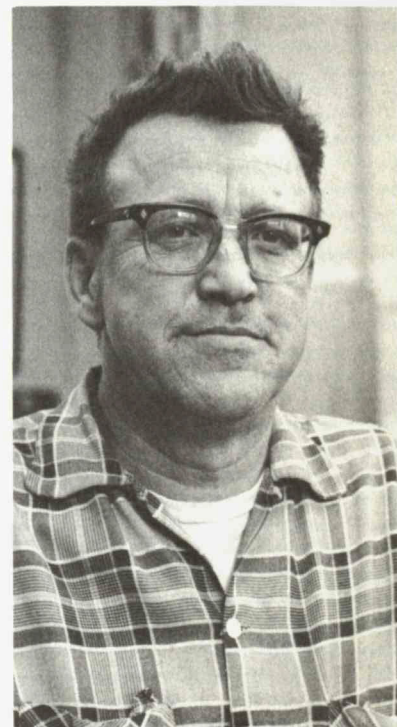
The Harvard Squares will provide the music for the Fall Acquaintance Dance given by the Graduate Student Council. Open free of charge to girls, the dance will be held Friday, Oct. 1, from 8 to midnight in the Campus Room of Ashdown House.

A FIRST FOR A HERO

Fred E. Gale, a senior technician in cryogenics, has emerged as the hero of the CEA explosion last July and will receive a medal and citation from the U.S. Atomic Energy Commission. Although Mr. Gale will be the 11th person to receive an AEC award, he is the first to be honored for heroism.

After being blown out of the explosion area, Mr. Gale rushed back in, turned off the helium compressor, smothered the flaming clothing of a technical assistant and a student and took them to safety, then returned to lead out another technician who was dazed by the blast. He assisted firemen in combatting the blaze, helped to find another missing person in the experimental hall, and aided in putting equipment on stand-by to prevent further explosions and fire. The citation from the AEC concludes: "Mr. Gale's prompt and courageous actions were taken with full knowledge of the hazards involved and without regard to the extreme personal risk to himself."

Mr. Gale, a graduate of the Lincoln Technical Institute in Boston, was a technician here from 1940 to 1947. After 13 years at Arthur D. Little, Inc., he returned in 1960 to join the staff at CEA.



Prompt and courageous Fred Gale

FOR SALE, ETC.

Lenoxware dishes, exc cond, 8 place settings, 45 pieces, \$14 or best offer. H. Bliss, ext 4225.
 Hoover port vacuum cleaner like new. Cost \$60, will sell for \$35. Donovan, ext 4067.
 Lam hickory skis, 6'3", steel edges, polyethylene bottoms, safety bindings, poles, nearly new, exc cond. Ext 1486 or 734-0871.
 Birdseye maple 3 pc BR set, dbl bed, \$125; Col LR set, \$80; straight back Col chair, \$40. Ext 1376.
 Free kittens, M & F, black, grey, yellow, housebroken, interesting personalities. Ext 4771.
 Cosco folding stool, \$5; Thayer play desk, \$4; vinyl chair, \$15; kiddie kar, \$2. VO 2-5955.
 Westinghouse front-load wash mach, 4 yrs old, needs minor repairs, best offer. Lawrence Nee, ext 4760.
 Leitz-Elmar 90mm 1.4 telephoto lens; Leica lens shade; bongo board, \$10; Realistic tape rcd, \$40; rotisserie oven, \$15; GE steam iron, \$10. Edith, ext 5138.
 Pair Brown & Sharpe outside micrometers, 5-6" with stand, \$15. Miki, ext 3565.
 Wedding gowns: size 8, one with long sleeves, attach train, \$50; other, short sleeves, chapel train, \$45. ST 2-0920.
 Johnson outbd motor, 10 hp, \$30; 24" elec range, \$40; 2-burner boat alcohol stove, \$15; 15" outbd steering wheel, \$10. Also wanted: 7" skis. Ext 4015.
 Roll-away bed. Call 266-5006 after 6:30 p.m.
 Dual control elec blanket for dbl bed, never used. Nancy, UN 4-1909 evgs.
 Lionel train set, many parts, mounted on 2-tier frame, gd working cond, orig \$200, will sell for \$75. Ext 6003 or EM 9-6036 Concord.
 Upright piano, \$30; 6'9" skis, safety bindings, \$15. Eleanor, ext 3201 or 3223.
 Westinghouse roaster, with stand, \$10. TU 9-2082.
 Shure M7D/N2ID cartridge, \$5; 12AX7/ECC83 and 12AU7/ECC82 tubes, tested, guaranteed. Ext 7202 Linc.
 AR-3 spkr, unfinished, exc cond, \$149. Jerry Welch, ext 7441 Linc.
 Complete eng drawing kit, never used, reasonable, Joan, ext 3541.
 '64 Harley-Davidson Topper, exc cond, 7,000 mi. Cal Owen, 262-4534 evgs.
 Hart skis, 205 centimeter, new; man's Koflach ski boots, size 10; poles; all for \$120. H. Rack, ext 6934.
 Brand new Canon Pellix, \$295 or best offer. Dipak, 868-9593 evgs.
 Refrig, used, good cond, 10 yrs old, \$25. Wilkins, ext 3250.
 Hand knit, ribbed, turtle-neck dummies, any color worsted, sizes 12-18, made to order. Marsha, ext 2180.
 Oriental style rug & pad, 18'x9', \$20. Mahog table & 5 chairs, buffet, \$60; bathinette, \$5. Ext 5097.
 Hamilton Beach elec knife; 8-day wall clock, record stand; Sunbeam steam-dry iron; Comb port R-phono, prints of "Blue Boy" and "Last Supper," best offer. Call 395-9159.
 Garrard Autoslim Changer, base & cartridge, exc cond, \$35; Royalite port typewriter, \$30; physics texts, R.K.&L., \$6; Sears, Thermo., \$5. J. Brenner, ext 2540 or 933-5567.
 Modern sofa, exc cond, \$43, will haggle. Call 227-4037.
 3 Tires 13x6.50, \$25; 1 easy chain, \$15. Call 491-8480 evgs.
 Steel lockers: 1-2 door coat type, 1-9 door gym type, best offer. Also 175A Dumont scope, \$30. Bill Stevens, ext 5411.
 Free kittens, 6 wks old, trained. Call 653-8189 after 3:30 p.m.
 Folding wheelchair, almost new, orig \$125, will sell for \$80. Steve, ext 7455 Linc.
 10" radio arm saw, 2 hp, exc cond, \$130; 5" 5 megacycle Heathkit scope, \$30. Call 868-6848.
 Springfield model 1903 30-06 rifle; Winchester model 94 30-30 rifle; will sell coin collection for face value of coins and books. Roger Neal, ext 2573.
 Girl's bikes, 20" and 24", both in gd cond, \$15 each. Ext 121 Linc. or 862-4197.
 Custom-made 2-pc sectional sofa, needs recovering, best offer. Call 784-6591.
 Scissor jack, Sears, 2-spd, heavy duty, best offer. Ext 2227.
 Kenmore auto washer, 10 yrs old, needs some work, \$15. Call 282-2544 evgs.
 Maternity clothes, size 10. Call 696-6295.
 23" console TV, 1 yr old, \$100; 7-pc pots & pans, \$12; round walnut coffee table, \$6; walnut telephone stand, \$7; walnut desk & chair, \$50. Must sell, returning to Europe. K17-3171.
 Flexible fluorescent desk lamp, \$15. Ext 5553 or 266-1279 evgs.
 Folding bed with matt; 4 chairs, 1 with arms; elec saw with bench & motor, best offer. IV 9-1707 evgs.
 Alto sax with case, \$115 firm. Ed Abbot, KI 7-1082 or at Baker house after 11 p.m.
 Couch, \$25; low bureau, \$15; 6" foam 39"x75" matt, \$20; typewriter table, \$6; door desk, \$7, etc. Ext 3223.
 Advanced nuclear physics books; also '57 Ford 2-dr hrdtp, gd cond, \$250 or best offer. Ashok, 354-5175 or 547-3976.
 Harmony classic guitar; Harmony 12-string guitar; both with case, \$60 each. Touchstone, 868-0234.
 One hobby: Vespa 150, 3-wheeler, custom body, recently repainted, new clutch & brakes, \$25 or best offer. BI 4-2448.
 2 slightly used snow tires, 6.50x13, \$15. Ext 4061 or 625-1762.
 Roll-away bed, almost new, \$25. Barbara Howard, ext 2476.
 Blaupunkt radio, FM, FM stereo, AM, SW, approx 1 yr old, \$160. J., ext 6891 or 547-4555.
 Outboard nubout, 17', 7' beam, 4' deep, 40hp Evinrude, trailer, \$1200. Ext 2216.
 2 Lg mahog bureaus; small used refrig, best offer. Ext 3551 or 275-8731.
 Light beige sofa, \$ 20. Call 527-0718.
 IBM Selectric, exc cond, \$325. Ext 4458 or 868-9466 evgs.
 Upright piano, asking \$150. Bill Stowell, ext 3237 or 876-8148.
 Moving: refrig, couch, bureaus, play pen, rugs, cabinets & more. Cheap! Stogeman, ext 2128 or 254-0838.
 80 gal stonelined elec hot water heater. Donald Boucher, ext 7669 Linc.
 Upright piano, gd cond, Briggs of Boston, recently refelted, asking \$50. Call 272-4406.
 Magnavox stereo hi-fi. \$65. Ext 1555.
 Hand made sweater, blue tweed cardigan, \$25. Jean, ext 662 Linc.
 Lowe-opta port professional tape rcd, like new, half price. Mike, ext 4188.
 GE 2-spd auto washer, 6 yrs old, gd cond except for transmission. Best offer over \$15. Mike, ext 4992.
 Austin Healey, exc cond, \$750 or best offer. Dick, MI 3-5638.
 '49 Chevy sedan, rebuilt eng, std shift, R&H, some body rot, runs fine, \$135. Tom Gillis, ext 1564.
 '52 Mercedes 300 sedan, best offer. A. Kessler, ext 6624.
 '53 Chevy convert, best offer. Ed O'Brien, ext 4710.
 '54 MG TF, new top, paint, R&H, other extras, many new & recond parts, exc cond. Ext 2488 or 484-8378.

'56 4-dr Buick, gd cond, \$150. Ext 1540.
 '56 Austin Healey for parts, \$150. Ext 1365.
 '56 Ford wagon, V-8, std shift, very gd cond, \$95. GR 2-4552.
 '57 Austin Healey 100-6, gd cond, \$800. Ext 3597.
 '58 VW convert, exc cond, new top, tires, \$600. UN 4-2337 evgs.
 '58 Chevy Bel-Aire sedan, floor shift, 348 eng, \$500. AI, 491-9038.
 '58 Jaguar 3.4 sedan, \$750. Call 254-4322.
 '59 Plymouth V-8 sedan, 4 new tires, exc mech cond, \$225. Ext 3378 or 254-4162.
 '59 Anglia (Eng Ford), lt green, gd cond, \$150. Ext 4381.
 '59 MGA coupe, body & eng exc, R&H, etc., \$800. Call ext 4200 or 2962 evgs.
 '59 Plymouth suburban sta wgn, 8 cyl, std trans, body gd, nearly new tires, exc cond, \$200. Ext 5101.
 '59 VW convert, eng recently overhauled, exc cond, Mike Gordon, ext 4546 or 491-4510 evgs.
 '59 Alfa Romeo 2000 roadster. Ken, 489-0400.
 '59 Renault, rusted, new tires, \$40. Ext 5575 Linc.
 '60 Vauxhall 4-dr sedan, gd driving cond, snow tires, best offer. Ext 4709 or EL 4-5807 evgs.
 '60 Austin Healey 3000, 4-seater, R&H, hard & soft tops, exc mech cond. Ext 2627 or 868-8915.
 '60 Austin Healey 3000, 4-seater, R&H, Mich X tires, 50,000 mi, exc cond, asking \$1350. R. Milward, ext 5596 or 491-7229.
 '60 Chevy sta wgn, V-8, std trans, R&H, just rebuilt eng, exc mech cond, \$800. Judy, ext 3544.
 '60 Chevy 4-dr sedan, std trans, \$700. Mitchell, ext 5273.
 '60 Rambler Rebel, V-8, 4-dr sedan, full power, exc cond, \$550. A. Riskalla, ext 80-47 (Concord).
 '60 Ford Falcon, auto trans, R&H, exc cond, best offer. Eleanor, ext 3581 or 646-7957 evgs.
 '60 Falcon 4-dr sedan, meadowdale green, 53,000 mi, std trans, exc cond, \$395. Hurry, leaving for Europe. Ext 7169.
 '61 Dodge Lancer, 770, 4-dr sedan, lg eng, exc cond, \$700. Ext 5223.
 '61 Porsche super 90, exc cond, many extras, priced for quick sale. Call 595-0619.
 '61 Mercury Comet 4-dr, R&H, auto trans, 32,000 mi, \$800. Ext 5483 Linc or 862-2012.
 '61 Pontiac Catalina convert, V-8 2-barrel, red with black top, p str & br, auto trans, R&H, best offer. Call EX 6-4451 evgs.
 '61 Renault Dauphine, \$300, will haggle. Miriam Levitt, ext 5656 or 628-5400 evgs.
 '62 Ford Galaxie 500, 2 dr hrdtp, 8 cyl, p str & br, R&H, best offer. EM 1-8543.
 '63 MG-B, convert, ww's, exc cond, comp factory service every 3000 mi, leaving country, \$1900. D. Gibbs, ext 3714.
 '63 Triumph Spitfire, 4-spd trans, R&H, call 933-4962 anytime.
 '63 Chevy Bel-Aire, 2-dr, std shift, V-8, ext 6543 or 262-0426.
 '64 VW, sunroof sedan, Call 899-4095.
 '65 Corvair, 1000 mi, R&H, C&C Group, 3 wks old, must sell. Ext 123 Linc.
 Apt to sublet for 1 yr. 1 1/2 rms in Back Bay, \$65/mo. Joanne, 536-9265 evgs.
 Lg beautiful ranch, Litchfield, N.H. (45 min from MIT), 22'x53' plus dbl garage, 1 acre wooded lot, owner built, \$22,000. Burgess, ext 2415.
 Mod apt, N. Camb, 5 rms, ht & light. Frank, ext 6542 or TR 6-2524.
 Unfurn Beacon Hill apt, spacious 1 BR, avail now. 39 Anderson St, \$90/mo. M. Zwick, ext 6020.
 Furn apt in Belmont, 3 1/2 rms, all util incl, garage, 1st floor, priv ent, \$125/mo. IV 4-3611.
 First floor, front apt, near Commonwealth Ave. Alan Ehrlich, ext 5298.
 Attract furn apt, Revere St, Beacon Hill, BR, K, LR, DR/study, tiled B, \$135. Mr. Willis, CA 7-7652 evgs.
 Income property: Warehouse on Broad Cove, Cape Cod, lot with 3 cottages: 1 five rm, 2 2 1/2 rm, furn, all util, across str from priv beach, \$11,900. B. Lacouture, ext 7404 Linc.
 Third fl apt, comp furn, 3 rms, priv B, all util incl, \$150/mo. UN 4-3469.
 Lexington, exec home, 10 rms, 5 yrs old, 2 car gar, 2 1/2 B, \$45,000 or best offer. Call 547-5583.
 N. Wilmington, 3 BR ranch-cape, fpLR, porch, landscaped lot, ideal for children, near Rt 93, \$17,800. Call 484-7557 after 7 p.m.
 Unfurn 3-rm apt, Porter Sq area, \$85/mo incl hot water, avail 10/1. Ext 4074 or KI 7-9019 evgs.
 Wanted: woman's ski equip & VW ski rack. Germaine, ext 5668.
 Wanted: mate for female Bassard Hound with papers. Hank, ext 2781.
 Wanted: upright piano cheap. Bob Filene, ext 1120 or 491-0015 evgs.
 Wanted: female roommate for spacious Back Bay apt. Commonwealth Ave. Jo Ann, ext 1396.
 Ride wanted M.I.T. -Watertown. Fairfield Gardens, Lexington St. Call 924-0799.
 Wanted: 1BR furn apt from end of Sept to Jan, for single male. Ext 5746.
 Responsible young mother would like to care for 3 or 4-yr old child in her home. IV 9-0419.
 Female roommate wanted, 25-35 for apt 5 min walk from MIT, Oct. 15. Mary Lou Piché, ext 6337.
 Wanted: ski clubs to rent lg heated farm house, handy to ski areas. John, ext 4818.
 Wanted: ride one day a week in exchange for same, to & from Follen-Moon Hill, Lex-MIT. A.S. Hoffman, ext 4586.
 Wanted: thesis typing, reports, etc. Alice, ext 5496.
 Riders wanted from Woburn (West side pref) to MIT, 8-5. Call Ted, ext 4757 or 933-3160 evgs.
 Wanted: babysitter, Tues & Thurs, 1:30-5 p.m. at Westgate. Call 864-2532.
 Wanted: ride to and from Plymouth, 8-5. Warren, ext 3501.
 Wanted: sofa, DR set, dbl bed. Jurgen, ext 4558 or 547-8069 evgs.
 Wanted: general housekeeper for working mother, own trans to Lexington, 2-5 days/wk. Call 861-0326.
 Experienced typing. Call 862-3898.
 Wanted: ride 9-5, Harvard St, Allston to MIT. Bobbie Bixler, ext 4531.
 Female roommate wanted to share apt at 348 Commonwealth Ave with 3 others. Call 262-3059.
 Wanted: boy's bike, 26" frame in gd cond. Call MI 3-3843.
 Tech drawing by experienced draftsman. Also, female roommate wanted. Betty Schirmer, 491-7288 evgs.
 Wanted: girl to do housework & babysit 2 days a week. UN 4-7995 or 491-0255.
 Wanted: one or two children to care for. 101 Boston Ave, W. Medford. John Keil, ext 5159.
 Found: silver cigarette lighter, initialed. Call Lost & Found, E19-210 and identify.