

PROTECTIVE

The business of protecting MIT's 13,000 inhabitants from themselves is sufficient cause for anyone's alarm. But here in Cambridge and at Lincoln Lab, the responsibility is divided between upwards of 100 individuals. Their job: insuring all of us a warning -- of potential hazards encountered in the line of duty -- and as a matter of general safety, too.

The Institute Safety Committee of volunteers this year numbers 62, under the chairmanship of John P. Karle; Lincoln's group of 55 is headed by S. Hardy Prince. A small Safety Council, directed by Prof. Edward Schwarz, makes policy for the whole operation, and its accomplish-

ments are of no small concern to MIT's Safety Engineer, Mark Dondero. Instrumentation Lab has its own committee of 12 members and chairman George Oberchon. All concerned may seek the advice of the Occupational Medical Service, its health officers and physicists.

These part-time committee members are appointed by President Stratton and their ranks are always open for volunteers. Each one is responsible for keeping a watchful eye on activities in his department. If, for example, he sees someone tugging at a weighty box in a manner bad for the sacroiliac, he'll show him an easier, safer way to lift it. All told, the job involves a sobering amount of common sense, alertness and interest.

More formal training includes monthly meetings in which committee members hear lectures on first aid, fire prevention, lighting and wiring hazards, safety clothing and a myriad number of subjects involving the welfare of their MIT beneficiaries.

To start this year's campaign, the Safety Committee Plans distribution of an enlightening brochure, "Home Fire Safety," which will accompany pay checks next month.

Institute fire protection itself is a fascinating project. We are monitored by an Autocall alarm system, dubbed "The Monster" by its intimates. Ensnared in Bldg. 10 near the 2nd floor switchboard, this mechanism guards most areas of the campus. It's connected up to various check points, and punches tape with time, station, date and what's gone wrong. Comments include: "Patrol" (watchman's call-in), "fire," "emergency," "system trouble," "water flow" (sprinkler going), "valve open" -- or closed -- and "trouble" which means the Autocall itself is having digestive problems.

When something is wrong, a bell rings on the switchboard and one of the busy telephone operators comes next door to read the bad news; pinpoints the trouble area with station index and calls the proper authorities. Same system, according to Mark, is used in the White House.

Thanks to Engineer Dondero and his helpers, Institute personnel enjoy better and better protection from all hazards. But, says the safety-minded officer, "We're never in good shape if there's one accident."

Needed for this accomplishment is responsibility on the part of each individual. And, at



Manning "monster": (left to right) Dondero, Karle, Hardy, Schwarz. Missing: Oberchon

times, Mark says he has a "real gripe." Most recent case? -- A highly reputable, though harried, outfit was hired to install sprinklers in East Campus this summer. When Mark wasn't around, they studied the underwriting map of fire lines in his office and proceeded to install the sprinkler system -- carefully hitching it up to an abandoned steam pipe.

IN . . .

A week before Messrs. Khrushchev, Castro and company sailed into New York, and Pogoland's candidate decided to run for the "Presidentistry," the Class of 1964 arrived en masse at MIT.

The newest members of the Institute number 900 and come from more than 600 secondary schools in 45 states, including Hawaii and Alaska. Helping maintain our position as second highest on the list of U.S. colleges with foreign enrollment, there are freshmen from 25 different countries, among them Turkey, Lebanon, Iran, South Cameroon, Venezuela and Cuba.

Thirty-seven men and one woman have parents or grandparents who attended MIT.

Plus a very fair representation of women -- 24 -- the Class of '64 is graced with gray matter, too. Says Prof. B. Alden Thresher, Director of Admissions, 84 percent of the freshmen were in the top tenth of their secondary school classes -- 164 class valedictorians and 56 salutatorians included.

Also among the corps: a champion swimmer and a 275 pound weightlifter, set to compete.



The top tenth

. . . AND OUT

Blowing into town on the heels of a warm spell was Donna. But MIT wasn't impressed.

Buildings and Power men spent the morning before sandbagging basement entrances to the main buildings -- to hold back any rising tides. As it turned out, we shipped a minimum of water.

Tree mortality consisted of one near Bldg. 31 which, according to head groundsman Myron Pratt, was suffering from "diseased roots," and three willows on Amherst Street.

The construction job aloft Bldg. 16 contributed a staggering amount of tar paper to probably the whole city of Cambridge, and also dashed a plank through a lower window, to the surprise of those standing near.

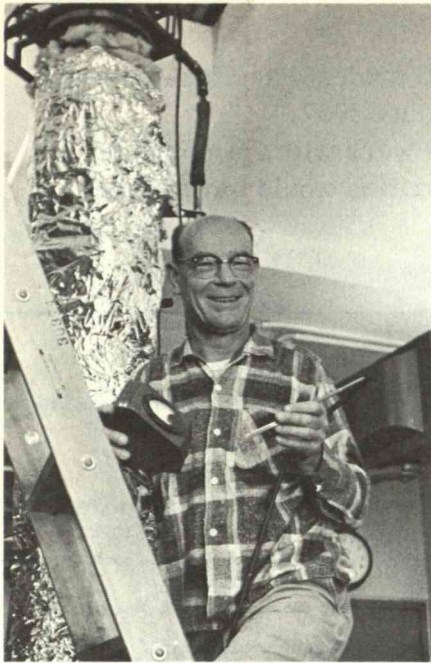
Wind drew a glass door right out of Kresge, and on Bldg. 14 swirled off the metal roof capping. Those who watched said it just unravelled.

And -- amid these various blowings -- an automatic control conference proceeded on with its business undismayed.

Site of the conclave? The crow's nest penthouse of the Faculty Club.



Wind in the willows



McLean prepares to look for leaks

ON THE BEAM

When John McLean joined RLE fourteen years ago, they were constructing the first molecular beam apparatus at MIT in Bldg. 20. They later chopped holes in all three floors to put up an atomic clock which climbed nearly to the roof. Now quarters of the Molecular Beam Lab have shifted to Bldg. 26. But they're still doing atomic charge research and the most recent model is 11½ feet high.

John started his career in the automobile business, after five years in the college course at Rindge Tech. Next move was to the Watertown Arsenal and the assembly and final inspection of automatic AA guns ("I still don't know how to shoot.")

In the Molecular Beam Lab, graduate physics students work on PhD. projects under the supervision of Dr. Jerrold Zacharias and Dr. John King. One of John McLean's earliest MIT recollections: an excited physicist viewing his experiment, yelling, "Hurray, we have a beam!" To John's dismay, he saw only a small blip on the scope.

Since then he has seen many more, and made components for some 45 to 50 atomic beam apparatus complexes. As an electro-mechanical technician in the new field of high vacuum work, he has had a hand in the evolution of frontier techniques -- resulting, among other things, in "Zach's" renowned atomic clock.

John took the Mechanical Course at the Lowell Institute School, when he was a machinist; finds he's learned an amazing amount just "by being here," and wishes he'd started earlier. With students and professors, he's hashed out the steps of building and rebuilding apparatus. Not the least of the job: teaching graduate physicists how to handle machine tools and high vacuum methods.

When not at work in the lab, John's likely found on fishing trips to New Hampshire. On one such foray into the wilds, an MIT associate took along a dilapidated squid -- fugitive from the Biology Department. When John wasn't looking, the creature was attached to his line. He hauled it up and nearly fell out of the boat. Recalls angler McLean, "It smelled, too."

HERE AND THERE

Once a year employees who are eligible for Blue Cross-Blue Shield coverage and don't yet belong to the plan are given an opportunity to join. Deadline date for application is Oct. 4. Application cards are available at the Office of Personnel Relations, Rm. 11-001, and further information at Ext. 4271.

Cartoon at right, by Boston Herald's Dahl, was entitled "The Motorists." When asked if this were indeed an MIT scene, the careful cartoonist mused, "It was probably inspired by Time's article on the new school in Wayland. But I'm very familiar with all those buildings at Tech. And since they're the only modern school buildings I have seen . . . it might have been. -- Well, I'll leave it up to you."

Installation of the new IBM 709 in the Computation Center was observed with brief ceremonies last Thursday.



And a review of the retiring IBM 704 revealed that more than 2,000 students and faculty members of 32 New England colleges had learned to program it, since June 1957.

These included about 1,000 different problems and 8,000 hours work with the computer. Use of the computer doubled in three years; according to the authorities would have tripled if more time had been available.

FOR SALE ETC.

21" port Sylvania metal case TV, beige, built-in antenna, used only about 48 hrs. BE2-1846 (after 6 p.m.)

Wrought iron stand for books, records, plants, etc., 27" high, 20" wide, 12" deep, 3 shelves -- 20" by 12". \$5. RI2-0785.

James B. Lansing DI23, 12" full range spkr in JBL mod mahog enc. Orig \$143.50, now \$70 or best offer. I. G. Stiglitz, Ext. 677 or ST2-4783.

Bar refrig, 25" x 31" x 19", handsome blk enamel, \$35. VO2-3167 (evgs).

VW dual carburetor kit, incl 2nd Solex carb, air clnr, necessary fittings, instructions for conversion, 10% increase in hp, \$40. Also VW 2-pipe exhaust muffler, \$10. John Laynor, Ext. 7202 (Lincoln) or UN4-1665 (evgs).

Deep freezer, 14.7 cu ft chest type, Coolerator. \$90 or best offer. Ext. 7466 (Lincoln) or BR2-1760.

HH Scott pre-amp & equalizer, mod 121-C. Best offer. Peter Rotondo, MI8-6740.

Brand new wooden dog crate. 22" x 35" & 25" high. Door with screen window. Exc for trans animal, litter for puppies, etc. \$13. Also 4 Siamese kittens, just born, perfect for Christmas gifts, Sealpoints, \$20. Mrs. England, CL9-8197.

Mouton lamb coat, size 12, exc cond, \$25; also Julliard wool blk coat, 12, good cond, \$10. Mrs. Norton, CR9-0176N.

Frig auto washer 9 mo old, \$125; also lg elec range, \$70 and crib, \$10. Ext. 2948.

Three pure bred Siamese kittens, \$15 each. Also their sire, 2 yrs old. Mrs. Hanscom, Ext. 2787 or HA6-5238.

Simmons hide-a-bed in good cond. EL4-4850 (after 6 p.m.)

Young mother living in Camb will board 1 or 2 children during day. KI7-6922.

Oxford trumpet, exc cond, made in England, \$60. W. Sonnenberg, Ext. 2749.

Lady's 3-piece Samsonite saddle-tan luggage -- pullman case, week-ender and train-case in very good cond. Best offer. Mary Hamer, Ext. 2586.

Toy manchester terrier. Andrew Chen, CO7-3029 (after 6 p.m.)

Very reas Frig, also some rugs and very good furn. AL4-8521.

Gas stove, very good cond, yr old. Josephine Landers, Ext. 2387.

Lace & tulle wedding gown, size 9, comp with hoop and veil. CR9-0687J (after 4 p.m.)

Free lance drafting, pick-up & delivery. W. Sacks, Ext. 2728 or HI4-8736 (after 7 p.m.)

Kelvinator refrig, 6 cu ft, \$25. Also furn: chairs \$5-\$10, pots, pans, dishes \$5, other items. LO6-0546.

Snare drum, exc cond, \$15. Miss Beckman, Ext. 3511.

Kitchen table, 4 chairs, \$15. TR6-2924.

Contemp 100" Turquoise sofa, Italian silk, walnut trim, exc cond, 7 mos old, new -- \$500, will sell for \$225. TR6-9510 (after 5 p.m.)

If you would like to assist in a good work, pls save postage stamps for Georgia Nagle, Rm 26-270 who will forward them to the Society of St. Francis (Anglican friars) in England.

Solid mahog BR set, not veneered, 4 poster full size bed, box spring, inner spring mattress, dresser, vanity, highboy, pineapple patter, exc cond. New -- over \$500. Sell for \$200, buyer must move it. Herb, Ext. 4946.

Slightly used box spring in good cond, twin bed size, inexpensive. CO2-0680 (after 6 p.m.)

Pair snow tires (used 1 season) mounted on 15" wheels, may be used on Chryslers. \$20. Ext. 3540 or LO6-2928 (evgs).

Infant's stroller, \$3; baby sterilizer and bottles, \$4; 3-cushion slip-covered sofa, \$15; lined golden draw drapes (2 sets), \$25; VW dual manifold, linkage, extra carburetor & air clnr, \$35; Goodyear wsw 5.90 x 15 tires, almost new, 4 ea @ \$10; cartop carrier, \$5. D. Haven, Ext. 3832.

'37 Plymouth 4-dr sedan, exc cond, \$50 or best offer. ALSO '48 Hillman convert with reconditioned engine, \$75 or best offer and '50 Ford station wagon, Country Squire, \$100 or best offer. A. Sperduto, Ext. 4151 or VO2-8894.

'50 Dodge 4-dr with new front tires, exc mech cond, \$100. Ext. 4271 or IV9-0238.

'51 Chevy, good trans, best offer. Chuck Crawford, Ext. 626 or RE4-2848

'52 Nash 4-dr, good motor & tires, \$100. IV4-5933.

'53 Chevy, good cond, reliable. \$250. Bob Brayton, Ext. 4983 or EL4-4318.

'53 Chrysler convertible coupe, N.Y. deluxe, R&H, power steering, brakes, new tires,

good cond, \$350. CO3-7128, Acton.

'53 De Soto 2-dr green, R&H, std trans, 6 cyl, new clutch & trans, burns little oil. Ext. 2948.

'53 Chevy 2-dr Bel-Aire, exc cond, \$325. Mr. Jones, Ext. 3584.

'54 Dodge Royal V-8, R&H, exc cond, \$425. Mr. Adi, TW4-3200.

'54 Mercury 4-dr sedan, clean, R&H, std shift with over drive, best offer, DE2-8677.

'54 Nash Statesman 2-dr, very good trans, \$150. MI3-3843 (after 6 p.m.)

'54 Ford sedan with overdrive, new clutch, new carb, good tires, good brakes. Mike, Ext. 7448.

'55 Chevy convert Bel Air, coral, R&H, auto trans, exc cond, clean, \$675. Smith, Ext. 2226.

'57 Buick Super Riviera model, 4-dr, white body, green interior, fam car, 1 owner, exc cond. LO6-7669.

'57 Ford 4-barrel carburetor manifold & T-Bird air clnr. \$50 or best offer. H. Cunningham, Ext. 2576 or UN4-5113 (evgs).

'58 VW, sun roof, 20,000 mi, best offer over \$1,100. Jessie Needham, Ext. 2121.

'58 VW, blue with ww's, perf cond. \$1,175 or best offer. CO2-0427 (after 6 p.m.)

'59 Renault Dauphine, fine cond, independent KNAC inspection certificate. \$1,150. Ext. 3104.

'59 VW blk, exc cond, best offer. Letwin, Ext. 4436.

'60 Dynamic 88 Olds, turquoise and white, pwr steering, brakes and windows, R, ww's, tinted glass, 10,000 mi, exc cond, Must sell to make way for '61 model. \$2,975, cash only. Ext. 2334 or BI4-2186.

Single rm on Riverside trans, Brookline, \$10/wk. AS7-4753.

Charming 1st flr apt, 3 steps from Esplanade, 8 Brimmer St., Boston. LR, BR, K, tile B, unfurn, avail immed, \$105. LA3-3165 (evgs).

Furn apt, Brookline, BR, LR, K, B, Garage, garden, utils, \$100. Avail Oct. 10. Babkovitch, Ext. 2925.

Jamaica Pond area apt, 6 rms, unhtd, conv to shopping, trans, \$85. Also 4-rm apt. Kathy Solobicos, Ext. 2828 or JA2-0999 (after 6 p.m.)

Ski lodge, Mt. Sunapee, NH for rent for coming season, 5 mos. Dr. Udin, BI4-5128.

Boxboro 2 BR ranch, breezeway & garage, fp, full basement, 1/2 acre in rural area, \$13,000. H. Hodgdon, Ext. 7418 (Lincoln) or CO3-4581, West Acton.

Furn house, Marshfield, 4 lg rms, ceramic bath, hrch cab K, 10,000 sq ft land, picturesque setting, reas price for quick sale. Mrs. D. KI7-4105.

Wakefield exclusive neighborhood, 6-rm Cape, LR, DR, K, lav on 1st flr; 3 BRs, B, 2-car garage, basement playrm, comp furn, 2fps, rent to be arranged. Ext. 5538 (Lincoln).

Wanted: second-hand port-a-crib. Mrs. Hinkle, MI3-5946.

Wanted: B flat clarinet for student beyond beginner. Ext. 2497.

Wanted: used Wollensack tape recorder in good cond. CY8-6508 (after 6 p.m.)

Wanted: 2-rm apt with good neighbors, price no matter. ST2-1717.

Three girls looking for 4th, Hvd Sq vicinity, \$40 per person, plus utils. UN8-6993 (after 6 p.m.)

Sunny, spacious apt needs girl roommate. Close to Square, tastefully furn, 1st flr, 2 BRs, rent incl ht, lt, elec. Selma Rosen, KI7-7108 (evgs).

Wanted: girl to share apt with MIT secretary. Nancy, Ext. 3254.

Wanted: Man's English bicycle. Josephine Landers, Ext. 2387.

Wanted: Copy of '53 Technique. Prof. Wohl, Ext. 2728.

Wanted: upright piano in good cond or repairable, reas cost. P. Andrews, OL8-8911, Ext. 455.

Wanted: 4-wheel drive jeep station wagon, good cond, 6 cyl, EL4-4850 (after 6 p.m.)

Wanted: bunk beds at reas price. Gloria, Ext. 4872 or CO5-2868 (after 7:30 p.m.)

Wanted: furn apt 1st flr, suit for 2. Mr. Gopan, Ext. 2146.

Wanted: crib, mattress, carriage, playpen. MO6-5789.

Wanted: small sailboat, also man's bicycle. Seasoles, Ext. 2449.

Wanted: roommate to share lg, 6-rm apt with 3 or 4 grad students, priv BR, lg comp K, 12 min bike to MIT, 10 min walk to Hvd Sq, MTA at front dr, \$30-35/mo. Parmelee, Ext. 2334 or UN8-6438.