



While most of the Institute sweltered inside, MIT photographer Bob Lyon spotted one stroller -- framed in a Great Court sprinkler

NEGOTIATION NEWS

Last week two-year agreements were signed by the Institute and the Building Service Employees' International Union, AFL-CIO representing some 400 maintenance and other people in the Department of Physical Plant and dormitories in Cambridge -- and 110 at Lincoln Lab.

Ratified at membership meetings last Thursday and Friday, the agreements provide pay increases of 5% this July and 4½% next year; extension of Master Medical coverage to retired employees with ten or more years of service, an increase in the daily allowance for hospital room and board from the present \$16 to \$18, and an improvement in severance pay.

On Friday the same offer was rejected by the Negotiating Committee of the MIT Employees' Union, and there was no further word concerning the situation as we went to press on Monday.

MAIN BRAIN

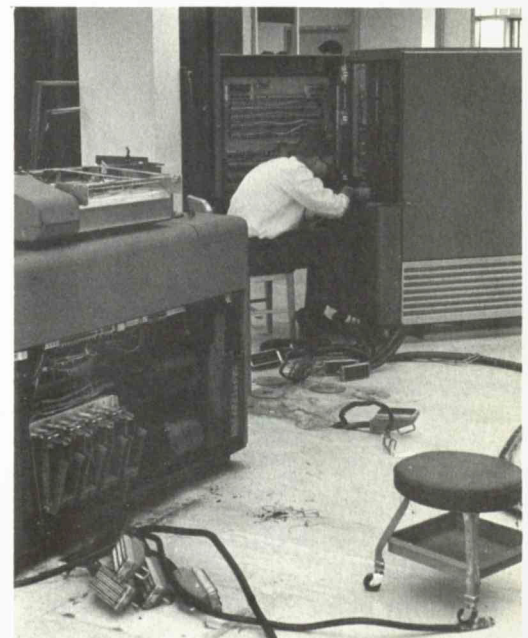
Three years ago the IBM-704 computer was installed in the Compton Building and called "the most versatile electronic computing machine in any educational institution in the world."

But on July 5 it was shoved out to make room for a newer IBM creation numbered 709. The Computation Center had outgrown its first "brain."

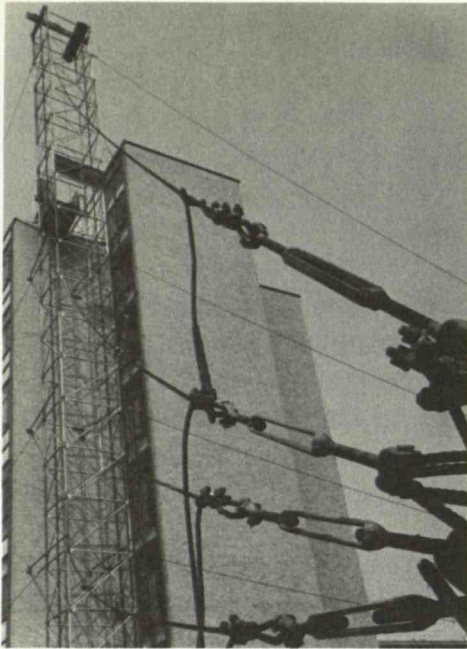
Around August 1 the new addition will arrive from IBM in its padded van; until then workers in the center will be busy placing new ducts and cables under the false floor.

According to Computation authorities, it will enable more work to be done by the MIT research community. And usually there are 500 active programmers working at a time -- one-quarter of them coming from other colleges in New England.

IBM 709 has been in existence for about a year, is much more slick and up-to-date than its predecessor, and uses a different method of getting information in and out. There are only several dozen in the country. Cost -- around \$2,500,000.



Checking the contents . . .



Tinkertoy

REVAMPED

Taking advantage of the summer calm, Physical Plant has been busy of late giving the Institute some face-lifting. In the area of Bldg. 3 they've been far from quiet. Piling up in the Annex parking lot is a hill of rubble -- once partitions in the fourth floor Mechanical Engineering drafting room, blasted out for offices and classrooms. As a result of this move, exam space for the department will be created in Walker Memorial from the old gym.

Three different floors are being renovated in Bldgs. 8, 33 and 24. The Aeronautics Library is being expanded, the Wood wind tunnel eliminated, and more office space created in Chemical Engineering.

Where Photo Service held forth, the Personnel Office will now have some space, and Nuclear Engineering is moving from Bldg. 4 to 24. Also for Bldg. 4 -- a new Ceramics lab and expansion of the Cashier's Office.

Disappeared: the old rope testing lab in Bldg. 1.

Still in the planning stage is renovation of 224 Albany Street, all to belong to Instrumentation, where the Matrons' Furniture Exchange will still have quarters. For the new Magnet Lab, offices are being set up on the front side of the first floor of the Armory.

Work has been of a varying nature from top to bottom. The roof hothouse of Bldg. 16 has seen its last rhododendron, has been blitzed to make way for offices and classrooms. And down in the janitors' stockroom in Bldg. 3 basement, there's a problem somewhat different. It seems the termites, encouraged by the steamy atmosphere, have developed a taste for floor brush backings. Result -- all have been replaced by steel.

COMING ATTRACTION

Over on Albany Street, on the site of the former Ward Baking Company, MIT is planning to build a laboratory to house the world's most powerful magnet.

The new facility will be west of the nuclear reactor and built under a \$9,502,000 contract from the USAF Air Research and Development Command. It's scheduled for construction by mid-1961, expected to be in full operation by 1964. Anticipated annual research budget -- \$2,000,000 a year.

The lab will be a national research center and will produce extremely high, continuous magnetic fields. These for use in basic research and advances in solid state, low temperature, plasma and nuclear physics.

Two stories high, the lab is slated to have a power plant of 8 million watts with an additional pulsed capacity of 32 million. It will be able to produce a continuous magnetic field whose strength will be over 500,000 times larger than the earth's magnetic field which makes a compass needle point North.

Professor Francis Bitter, pioneer in magnet development, will resign as associate dean of science to take primary responsibility for the design and construction of the lab, will also be chairman of the policy committee and professor of geophysics. Director of the lab: Lincoln's Dr. Benjamin Lax, head of the division of solid state physics.

Magnet's motor generators will be housed in the basement with services, heat exchangers and buswork. On the first floor: test cells, control rooms, shops, office space and assembly labs. Second floor labs will be open for local and visiting scientists. Only real problem will be the heat generated from the magnets. To cool things off, water will be pumped from the Charles.

MAN FROM THE CLAN

His schedule would make many a Tech man flinch. But for Bobby Seeles it's clearly the right way to do it. Bobby, head janitor in Bldg. 3, lives out in Dedham; arises each morning at 4, walks for fifteen minutes, and arrives at the Institute around 7:30 -- after four changes on the "20-cent Yellow Taxi."

In Kilmarnock, Scotland, Bobby was one of six children. But instead of his father's blacksmith trade, he decided to go into retailing. He spent five years as apprentice in the home furnishings section of the Kilmarnock Coop, then went to Perth as an "approver" ("I can tie up a bundle yet"). Bobby returned home as a buyer for the Coop, made many a trip to Glasgow and London for supplies.

When he was 32, he and his family came to Boston via Montreal, and he joined forces with Houghton & Dutton in Boston. Then, after eight years, Bobby came to MIT as janitor in Bldg. 5, six months later had his present job. He laughs, "You must think I'm built in with brick and plaster."

Many students have worked in the Mail Room for Bobby -- remember the jolly Scot whose biggest hobby is his garden. What with a staggering space of vegetables and flowers to cultivate, he has little time for much else.

But now and then he finds time to junket to New Hampshire, visiting his son, Dr. William Seeles, who graduated from MIT (Biology) in 1943.

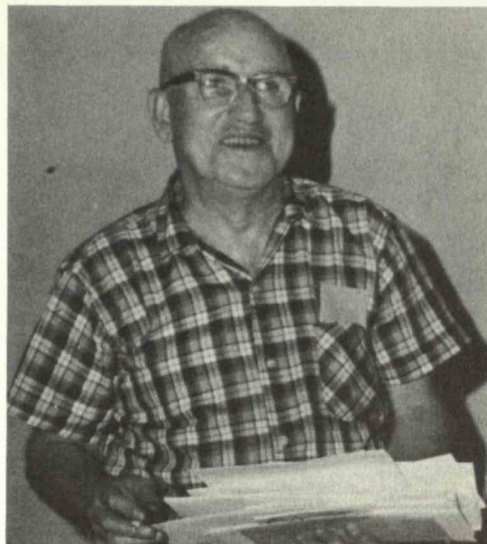
Does Bobby miss Scotland? -- Not by his quips. Says he, "Therrrrrrre's only one thing tighterr than a Scot and that's the skin on a frrog's nose -- it's waterrrr tight."

HERE AND THERE

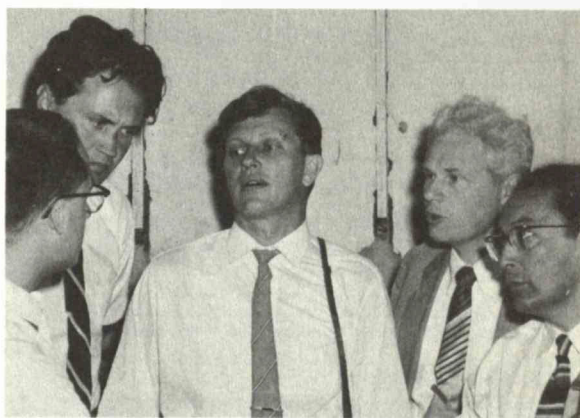
Touring the Institute last week were a group of Russians described by Nuclear Science as "high energy machine men." Participants in an exchange program sponsored by the AEC, they visited the Cambridge Electron Accelerator, were going on to similar installations around the country.

Here they stopped to talk with physicists, visited the Synchrotron, bubble chamber scanning room, Chapel, Auditorium and also gave a colloquium on Russian high-energy machines.

Two weeks ago another campus visitor dropped into the Court near the tool box. This one -- a pigeon, tagged and weary. Checking his license plate with the Audobon Society, the girls in Admissions discovered that he was a racer from Manchester, N.H. and wrote to his owner. After a weekend's lodging in the Physical Plant basement storage room -- with Italian bread and water -- the pigeon recuperated, strolling around the Bldg. 10 lobby. But by last Monday he was gone. No doubt with a full report on low energy physics for his associates in N.H.



Seeles sorts



Synchrotron expert (left) discusses with Russians (right)



Bus Stop

signals mixed at first, drove right past to Harvard Square in a vehicle marked "Cleveland."

MIT Summer Symphony has started its yearly activity -- is holding open rehearsals on Sundays in Kresge Auditorium at 7:30 p.m. Under the direction of John Corley, the sessions are open to the public. Climax of the summer season will be a concert on July 31.

One MIT Charter Flight left by way of Mass. Ave. to catch an Air France flight at Idlewild. All passengers gathered outside the main entrance, waiting for a chartered Greyhound bus.

The driver, however, got his

FOR SALE ETC.

Kodak Tourist camera, f: 4.5, 1-250, T, B, shutter; flashgun; sunshade, filters; interchangeable backs for 8, 12, 16 exposures on 620 film, or 828 film; some film. \$35. Dave Moore, Ext. 7109 (Lincoln).

Zenith AM-FM radio, \$50 or best offer. Michael Stringfellow, Ext. 2396 or TR6-3896 (evgs).

12' boat, white oak, marine plywood construction, very exc cond, Ed Getchell, Ext. 709.

Two port Revere tape recorders, exc cond, \$50 each. Mrs. Farrington, Ext. 2675.

Bilrite collapsible baby carriage with spring, good cond. Also two 4 x 6 beige rugs, 2 BR end tables and lamps, 2 LR tables, lamps, blk sectional bkcase. AL4-3284.

All household furn: beds, dressers, lamps, end tables, rugs, Frig and freezer, etc., good cond. AL4-8521.

Baby carriage, playpen, crib mattress, Philco refrig with across-the-top freezer. Marple, Ext. 2384.

18' De Ville travel trailer with gas refrig, instant gas ht water htr, shower, marine flush, usual std equip. Capt. Ferguson, Rm. 4-133, Ext. 2173 or see at 4 William St., Topsfield.

15" Motorola TV, exc working cond, \$40; also baby's crib, \$8. Ext. 2534 or CE3-5467 (Saugus).

Seat on MIT Charter Flight Paris-Boston, leaving Paris Aug. 7. \$152.50. Miss Seymour, Ext. 3731.

38' US-1 design sloop, in water, racing trim, \$3,500. Ext. 4410.

Used baby carriage, good cond, incl mattress, \$14. Knill, EL4-0842.

Siamese kittens, male & female, 3 1/2 mos, housebroken, pedigreed papers, \$40. CE5-6064.

MIT charter flight, 1 ticket London-Boston, Aug. 10. Best offer. Paul Carr, Ext. 2562.

Sailfish, \$180; 8' sailing pram, \$85; Velosolax motor bike, \$120. W. Jones, UN8-7600, Ext. 2813.

GE refrig, exc cond, 11 yrs old, avail end Aug, \$45. UN8-7283 (after 6 p.m.)

Camping got you? Thendon't miss this: \$50 will buy a 9 1/2 x 9 1/2 J.C. Higgins umbrella tent with corner-pole assembly and screened front porch. Mint cond, used very little. For another \$10, 2 alum & saran folding cots. Mrs. Peters, Ext. 2747.

Cine Kodak 16 mm movie camera. Anastigmat F-19, exc cond, good case, \$35. Ext. 124 (Lincoln) or VO2-5485 (evgs).

'59 Encyclopedia Americana, matching dictionaries, Books of Science, Books of Lands and People. 49 "unused" volumes in all & 50, \$5 coupons for Americana Research Institute. All for \$250. Hank Haddad, Ext. 3536 or MI3-2859.

Sofa-bed, desk, swivel chair, bamboo screens, Electrolux vacuum, bookcases, Greenwood, Ext. 4995 or UN4-7131.

'48 Studebaker Champion 2-dr sedan, registered, inspected, running, only 18,000 mi on factory-rebuilt motor, only 7,000 on tires and relined brakes. \$75. WA4-7512.

'51 Mercury, exc cond, tires like new, \$150. J. Schuler, Ext. 626 or ST2-9352.

'53 Olds Super 88. Perfect mech cond, exc engine, recent battery, snow tires, auto trans, power steering & brakes, R&H, second owner, always properly cared for, \$450. Robin Ganellin, Ext. 500.

'54 Dodge Royal V-8, auto trans, very good cond. Charlie, TW4-3200 (days).

'55 Chevrolet Bel-Air 4-dr sedan, 6 cyl, power glide, R, good cond, \$750. Ext. 2534 or CE3-5467 (Saugus).

'55 Porsche coupe, blue, 1500N, R&H, good tires, must sell immediately. Robert Baker, Ext. 2622.

'55 Ford Sunliner, baby-blue convert, exc cond, 4 new tires, R&H, leaving for Europe, must sell, \$895. Jay Hirschfeld, Ext. 2553.

'58 Flat 600, 2 tone, R&H, 16,000 mi, exc cond, \$850. RE4-5237 (after 6 p.m.)

'58 VW sunroof, clean, avail now, family has outgrown. D. Haven, Ext. 2418 or WA4-7265.

Prof leaving for Europe has '58 blk VW sedan for sale. Sunrft, ideal for summer driving, up to 36 mpg, driven 18,500 mi, R&H, fine motor, exc cond throughout, \$1,290. KI7-6735 (evgs).

Porsche convert. 31,000 mi, new top (blk), new paint job (blue), special steering wheel, Abarth exhaust, comp motor overhaul 30,000, Motorola transistorized R, \$2,495. Real cream puff. A. Smalley, Ext. 308 (Mitre).

Allston 5-rm apt, all improvements, gas ht, cont hw, lg yd, newly redecorated. ST2-3506.

Furn apt avail July 23, knotty pine LR, fp, K, BR, B, bar, priv entrance, pking. Newton Center, nice neighborhood, 17 min from MIT. \$125/mo comp. Ext. 2334 or BI4-2186.

4-rm furn apt (furn if desired), terrific location, clean. AL4-8521.

Furn apt to sublet for Aug, lease thereafter, BR, LR, small K, B, lots of closet space, near Hvd Law School, 2nd flr, well-kept house. About \$140/mo. EL4-2981 (evgs, wkends).

Sublet, July, Aug, 2 rms, lg, very bright, rm with double bed, suit for 2 people, 1 rm with single bed and running water, K facils, \$13/wk. Mrs. Campbell, BE2-0944.

For rent: furn 5BR house, desirable section Chestnut Hill. 3 B's, K, breakfast rm, LR, DR, sun rm, patio, 2-car G. Avail immed. Mrs. Balboni, HU2-1667 (days) or PA7-4863 (evgs).

Beacon Hill unfurn apt avail immed, 2 rms & lg LR, K, B, 2nd flr. D. H. Robbins, Ext. 2729 or CA7-6776.

5-rm ranch house with screened-in porch & garage about 2,500 sq ft of land, forced HW ht, near Mitre & Linc Lab, off Rt. 62, exc location near shopping ctrs, church & school. Owner, BR2-0896 or see night janitor, B338. \$15,000.

Acton Colonial split-level. 4 BRs, 2 1/2 Bs, LR with fp, DR, porch, 2 car G, full basement, 1/2 acre, 2 yrs old. C. Stevens, Colonial 3-4912, Ext. 7169 (Lincoln).

Wilmington 4 BRs, LR with fp, DR, K, 1/2 acre shaded lot with garage and outdoor fp, quiet neighborhood, \$16,900. Owner, OL8-2551.

Newton Chestnut Hill deluxe air conditioned 3 BR house, cab K, dishwasher, lg LR, DR, 1 1/2 Bs, garage, basement, convenient to all schools and shopping ctrs. Lease required. DE2-8163.

Eastham, Cape Cod summer rental. 4 BRs (sleeps 8), innerspring mattress, 2 B&B, elec stove, hw, lg LR, fp, screened porch, 5 min walk to Cape Cod Bay, 5 min drive to Nauset Light Beach, near stores and churches. Avail July 30-Aug 20, Sept 6-Oct 1 (reduced rate). G. E. Nealand, Ext. 4942 or HI4-1765.

Wanted: by Sept 1 -- 4 or 5 rm mod apt for adult couple, reas rent. MI8-2373.

Wanted: two rmmates by two girls in lg 4 rm furn apt, start Sept 1. CO7-2682 (after 6 p.m.)

Wanted: used gas range and used elec refrig, 10 cu ft or more. Arnie Stoper, Ext. 3461.

Wanted: typng table. EL4-4850 (after 6 p.m.)

Wanted: vacuum cleaner, bookcases or boards and bricks, elec alarm clock, 2 small tables, 2 lamps. Mrs. Kretsinger, Ext. 3633.

Gal trio now duet needs 3rd rmmate, Comm Ave near Mass. Ave. Eleanor, KE6-7184 (evgs).

Wanted: some type indestructible boat, Figerglas or aluminum, suit small out-board. Dr. Clark, Ext. 4488.

Wanted: home for Tammy, brown & white, yr old, spayed female cat. Owners moving. Ext. 4151 or KI7-3920.

Wanted: second-hand, lady's bicycle. VO2-2597 (evgs).

Wanted: roommate interested in renting apt within walking dist MIT. Harriet, Ext. 717 or KE6-5658 (evgs).

Lost: Parker '51 pen. Ext. 727, David Freifelder.