

TV GUIDE

One fine day last November a CBS news commentator spoke into a microphone at Lincoln Lab's Millstone Hill Radar Observatory. He said with a grin, "Hello moon, this is Charles Collingwood. Can you hear me? Is anybody up there?"

Two and one-half seconds after each statement, his echo returned by transatlantic cable from England to Millstone. It had traveled almost a half a million miles -- had bounced off the moon to the world's largest radio antenna at Jodrell Bank, England, and back to Lincoln in an amazing triple play. During the pause following "Is anybody up there?" Collingwood's expression suggested he might be expecting an answer.

This moon-bounce will be telecast in a program called "Waves of the Future," Sunday afternoon, Feb. 7 at 5 p.m. (Boston, WNAC-TV, Channel 7). Part of the "Conquest" science series, the Lincoln Lab show will be telecast by more than seventy stations around the US, including Hawaii.

Collingwood and his crew spent one extremely full week filming the program, which features interviews with Paul Sebring, leader of the Surveillance Techniques Group at Millstone Hill, Dr. Carl Overhage, Lincoln Lab director and Gordon Pettengill, associate leader of the Millstone group.

The telecast, first public demonstration by Lincoln scientists and engineers of their experimental moon bounce, will also highlight recent advances in long-range radar at the Air Force sponsored Millstone Hill station.

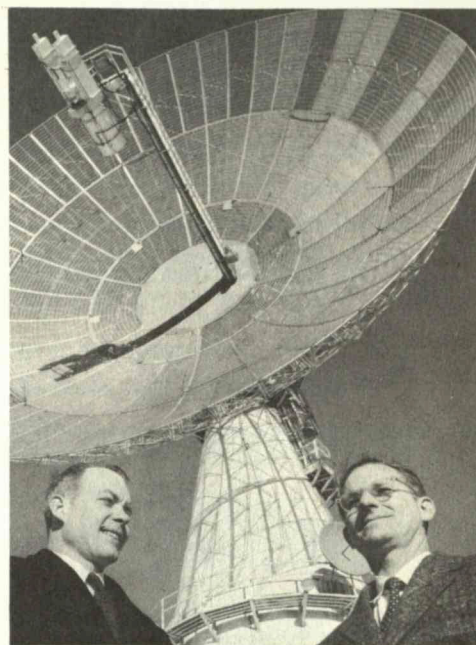
ROUND THE GLOBE

Having sailed through a round of speaking engagements with his usual energy, Dr. James R. Killian, Jr., with Mrs. Killian, planned to leave Monday to go around the world -- in thirty-four days -- by jet.

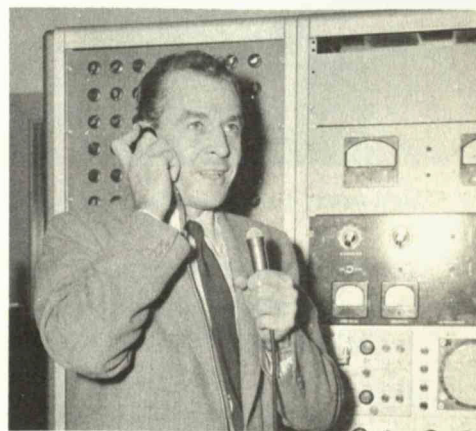
Plans for the trip really started last summer when Dr. Killian received an invitation to be guest of honor and to speak on Feb. 4 at the annual luncheon of the Parliamentary and Scientific Committee at the Savoy Hotel in London. This honor had come once before to an MIT man -- our late Chairman Compton, just six years ago.

The next invitation was from Australia. Would Dr. Killian deliver a paper at the twelfth International Congress of Scientific Management on Feb. 26 in Sydney?

Soon the trip grew to include five countries and stops in Hawaii and San Francisco on the



Pettengill (left), Sebring and big dish



Collingwood awaits reply

way back. They are scheduled to return to Boston on the evening of Saturday, March 5.

In London, in addition to the speech, Dr. Killian will visit with the rector of the Imperial College of Science and Technology and will meet with England's Minister for Science. Then the Killians will fly to Istanbul to tour Robert College, where former MIT Prof. Dr. Duncan Ballantine (Humanities) is president. Two days later they will arrive in Beirut where alumni from Lebanon, Syria, Jordan, Saudi Arabia and Egypt are planning a welcome, principally arranged by an alumnus who's on the staff of the American University.

The next stop will be India. Dr. Killian will speak at Delhi University, meet a former student now in Calcutta, and visit the Institute of Science and Technology in Patiala. In New Delhi he will visit with Ford Foundation representatives. By way of a tourist jaunt, he and Mrs. Killian will go to Agra to see the Taj Mahal.

Following the Congress in Sydney, they will go to Melbourne and Canberra. Then, crossing the International Date Line, on to Honolulu to be greeted there, too, at an alumni reception.

Before setting out on his trip, Dr. Killian received gold medals from the Benjamin Franklin and Holland societies and the Good Government Award from American Legion's Crosscup-Pishon Post.



Sports Car Club's prexy Francis -- karting

GO, GO, GO

It looked like a grasshopper -- with a $2\frac{1}{2}$ horsepower lawnmower engine and five-inch wheels. No product of the insect family this new bug is the automotive industry's latest mite, the Go Kart. Members of the MIT Sports Car Club got a peek at one in a Rockwell Cage demonstration.

The kart is a bodyless and unsprung chassis, advertised as an "automobile in its own right." With 40-50 inch wheel base, it is propelled by a 2-cycle engine, available from 5.8 to 16.5 cubic inches; some are lawnmower motors, others from chainsaws. Anyone, claim its enthusiasts, can drive one -- including tots.

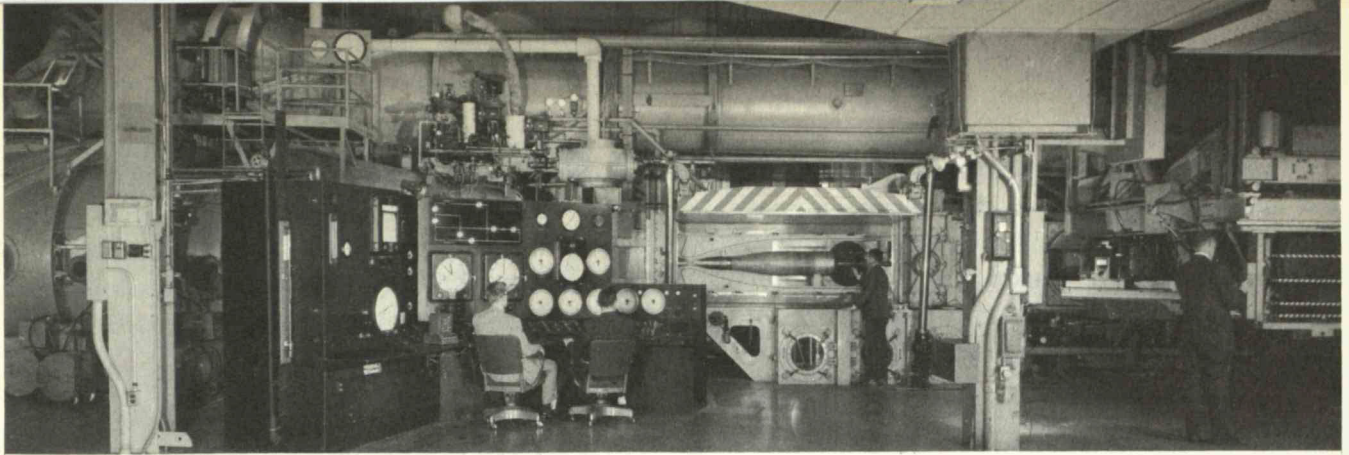
So far not one of the MIT club's some fifty members has one. But with their sports cars they attend monthly gymkhanas and last year were champs of the New England Confederation of Collegiate Sports Car Clubs.

Karts can be purchased whole, or in handy do-it-yourself kits. Among stylish models now on the market: Swoopster, Spinster, Gopher, Acer Racer and Putnik.

HUNDRED YEAR PREMIERE

Everyone at MIT knows there's a centennial celebration in the offing for next year, and most all quarters of the Institute will be involved in its plans and activities. Preparations for the coming event have involved countless hours of work for more than a year by members of the busy "parent committee": chairman John E. Burchard (Humanities), Francis Bitter (Physics), Walter Gale (Aeronautics), Charles Kindleberger (Economics), Roy Lamson (Humanities), Elting Morison (SIM), Philip Morse (Physics), Walter Rosenblith (Electrical), Ascher Shapiro (Mechanical) and Arthur Singer (assistant dean).

Their general planning has already shaped up to some interesting events. Last week we (with CBS and sponsor American Machine & Foundry Co.) announced that CBS-TV will carry a special 1960-61 series on advances in science and technology. Titled "Tomorrow" the series will involve one-hour programs presented in prime-evening time, covering some significant Institute fields. Dean George Harrison is chairman of a steering committee which will work with CBS on the TV series and maintain high academic standards. Other activities, such as an international conference, are planned.



The wind tunnel -- with hypersonic nozzle (beneath striped door)

BIG WIND FROM THE WEST

Not even gusts from the Charles can compare with the gale that's been stirred up in the Naval Supersonic Lab (Aeronautics and Astronautics). Home of the Institute's largest wind tunnel, the lab on January 21 played host to a crowd of television cameramen, reporters and interested MIT people. Object of their attention: the tunnel and its new performance -- a wind of more than Mach 7, about 5,300 miles an hour at ground level.

The new velocity was effected by installing a small hypersonic tunnel -- very like a huge cigar holder -- inside the regular supersonic tunnel. Air of 100 pounds pressure and 1000 Fahrenheit swishes along through the hypersonic nozzle and, sensing lower pressure in the outer section, goes faster, attempting to fill the void.

Press conference visitors watched the phenomenon on television sets; saw shock waves hit a test model nose cone, mounted downstream of the nozzle.

The new nozzle cost \$150,000 to install; is a simple and low-cost creation, believed to be the first such wind tunnel modification in the U.S. Usual methods of increasing velocity involve expensive additions of compressors and electric motors. And further development of the new nozzle is expected to result in wind velocities of about Mach 15.

Among alumni of wind tunnel tests are some of the principal weapons being adopted by the Navy and Air Force: Boeing's Bomarc, Hughes' Sidewinder and the Philco B58 Hustler bomber.



Call gives twist of the wrist

TO QUELL ALL CRISES

It seems the accident toll isn't entirely limited to skating rinks and ski slopes. Just avoiding dives over misplaced extension cords can demand a pretty advanced christie. And from all sides can come the hazards of falling objects, make-shift devices and wastebasket conflagrations which are rather hard to extinguish with the morning's cup of cold coffee. In short, we're all liable for a fall of some sort.

For the MIT Safety Committee (first such college organization in the country) these potentials are always hair-raising. To keep up with methods of accident prevention the group has monthly meetings, featuring everything from safety shoes to means of alerting the Institute population.

Last month's program starred J. Thomas Call, Liberty Mutual lecturer on accident prevention -- once known among carnival circuits as Tito, Magic Clown of the Circus. Ordained minister, mentalist and magician, the versatile Call flashed a bevy of tricks to illustrate that faulty judgments of time and space cause most accidents.

Next to come on the safety docket: a February 11 meeting on "Strains" -- to preserve, among other things, Institute sacroiliacs.

HERE AND THERE

Bob Jones, CIS research assistant and full-time WEI staff member, informs us that the radio station will -- starting tomorrow at 9:30 p.m., and for three successive Wednesdays-- broadcast a series of four seminars which were given last spring at the Center for International Studies. Seminar speakers: Carroll L. Wilson (professorial lecturer, SIM), Gen. James McCormack (Vice President of the Institute), Lloyd Berkner (president, Associated Universities, Inc.) and Jerome Wiesner (director of RLE).

On the bookstands since Jan. 19 has been "Edmund Burke and Ireland" newest book by Prof. Thomas Mahoney (Humanities). It is first in a series of four on the famous Irish statesman. Prof. Mahoney gave the '57 Lowell Lectures on Burke; so far has made a total of five trips to source material in England and Ireland.

MIT makes news. A Boston newspaper reported recently that we are "planning a new Ear Sciences Building." Putting said ear to the ground we are, in fact, coming up with an Earth Sciences Center.

FOR SALE ETC.

Upright Royal vacuum cleaner, exc for rugs, \$5. Also Sunbeam auto egg cooker, cooks 6 eggs exactly as desired, \$6. M18-2119.

Man's hockey skates, size 13, \$5. Ext. 194.

Shut-in, 25 years secretarial experience, will do typing at home: theses, papers, etc. Miss Donovan, CU6-6550.

Woman's Henke ski boots, size 7 medium, worn twice, \$25 (\$45 originally). Mrs. B. R. Hopkins, Ext. 4934.

Navy blue lthr English carriage, converts to stroller, chrome trim, comp with rain guard and white inside. Also grey and red Walt Disney high chair, fully padded with chrome legs, converts to table and chair set; gray wood crib, closed head and foot boards with appliques, adjustable spring. \$50. Bob Terenzoni, Ext. 2364.

Beagle puppies. AKC registered, exc blood lines, wormed and inoculated. \$35. Jerry Horne, Ext. 378 (Lincoln) or 5415 (Lincoln).

Tutoring in French by grad of London University and Sorbonne. UN4-1367.

Am literally crowded out of home by loads of antique china and glass, every one a collector's piece. Also some prints. Very low prices, but willing to haggle. Mrs. Shore, LO6-8296.

Baby furn: English carriage with pad, \$28; play pen, \$12; Kant wet crib mattress, \$9; 2 bassinets with mattresses, \$9; 2 walkers, \$3 each; Detecto scales, \$6; baby toilet seat, \$2. All in exc cond. IV4-4950 (after 4 p.m.)

"Connoisseur" British 3-spd turntable with Hysteresis Synchronous motor, Gray pickup arm and GE cartridge with diamond stylus. All for \$35. Paul Rosen, Ext. 7241 (Lincoln).

"Blizzard" a lonely 3-mo old kitten, grey-striped, silver-tipped, would like friendly home. Housebroken, clever (understands "no" in 3 languages) and playful. Mrs. Kahn, Ext. 2566.

Will sell used port. Smith Corona typewriter for best offer. C. Hough, Ext. 3541 or AL4-8775.

Easy spin dry washer; Kenmore gas range. John Collins, Ext. 3536.

Gilbert stroller, like new. Year old, removable top, good for young and old. Selin, Ext. 7307.

Pair Hickory skis, \$10. 210 cm, steel edges, no bindings. E. Parthe, Ext. 3317 or Room 4-115A.

Aluminum V twin air compressor, 6.8 cfm, 0-75 sst. Exc cond. Nelson, Ext. 4489.

50 mm Schneider-Kreuznach f/4.5 enlarging lens. Like new. Ext. 2443.

Slumberland couch, converts to double or 2 single beds, innersprung, exc cond, \$40. Also: Maytag, fully auto washing machine, \$35; D'ette set, as new, \$18; 2 bureaus, \$6 and \$4; high chair, \$5; wooden stroller, \$4; small crib, converts to playpen, \$8. R. White, Ext. 4152.

'47 Dodge. New valves installed Dec '59, good tires, R&H, body in exc cond, gives wonderful commuting trans. \$125. Ext. 3679.

'49 Dodge Coronet 4-dr sedan. Blk, exc cond, 4 new tires and new brake linings, 1 owner, garaged during entire life. Robert Schissler, JA4-5317 (evgs).

'49 Dodge club coupe, above average. R&H, ww's, 2-toned, \$150. ST2-1476.

'53 Mercedes 220. Grey, red lthr upholstery, exc cond, best offer. Ext. 2575 or KI7-6580.

'54 Buick 2-dr, hardtop. R&H, Dynaflow, ww's, very good cond, reasonable price. Ext. 445 (Lincoln).

'55 Fiat, model 600. Light gray, 2-dr, 30,000 mi, 40 mpg, 4 new tires, 5 spares. Ellen, Ext. 2692.

'55 Chrysler Windsor Deluxe hardtop. Auto trans, R&H, ww's, snow tires, cust. upholstery, many other extras, exc cond, excep clean. \$995. A. Dudevoir, M18-9798 (evgs).

'57 Ford Fairlane 500 4-dr sedan. Fordomatic, power steering and brakes, R&H, defroster, exc cond, must sell for \$1,450 or best offer. Ext. 5393 (Lincoln).

'57 Plymouth. Orig owner, radio, new tires, owner anxious to sell. WA4-9326.

'57 Buick Century sedan, Perf cond, comp winterized, 2 extra tires, R&H. \$1,650 or best reas offer. Prof. Thorson, Ext. 3200 or B4-7491.

'58 VW, low mi, gray, radio, windshield washers, Trico wipers, ski rack, bumper stiffeners, exc cond. \$50 below market price. Kabachnick, LA3-6310 or OL3-7461 (evgs).

'58 Triumph TR-3A convert roadster. Green & white. R&H, adjustable steering, tonneau cover, 23 mpg, 15,000 mi, never raced. \$1,950. Gil Klein, Ext. 765.

'59 Saab. Pearl gray, like new, 8,500 mi, 60 day guarantee. \$1,595. Ext. 3439 or WO3-4556 (evgs).

'59 VW deluxe model. ww's, lthr interior, undercoating, radio. \$1,425 with radio, \$1,375 without radio. Ext. 4921.

'59 Plymouth 9 pass. Full power, 7,013 mi. Michigan owner buying home. Best offer. CE5-0359 (evgs).

Furn apt. Lg BR, LR, immense K, pantry, B, front ent hall, 2 priv entrances; walking distance to Hvd Sq and MIT. \$110/mo. Jo, Ext. 2703.

Lovely 6-rm apt in nice location, Chelsea. Very reasonable. CH3-3978W.

Spacious, well-furn rm for man. K facilities for breakfasts. \$55/mo. Wendell St., Cambridge. EL4-7813.

Attrac furn apt, Marlborough near Mass Ave. Mod cab K, lg LR with fp, tiled B, recently renovated, good storage space. Ext. 604 (Lincoln) or CO2-0642 (evgs and weekends).

Furn apt overlooking Cambridge common. 8 mos, beginning Feb. 15, \$200, incl car space. TR6-2440.

Newly decorated rms near Harvard Sq, Priv entrance, bookshelves, desks, easy chairs, new beds, Comp furn K. All linen provided. Weekly maid service. \$10-\$12. Call or see at 12 Sacramento St., Cambridge. EL4-1876.

Light, nicely furn apt, Ellery St, near Hvd Sq, Cambridge. BR, LR, K, B, hall, lots of closet space, avail Feb. 1. Lynda Gabin, Ext. 3642 or TR6-0423 (evgs).

Comp furn lg, single rms for rent, priv home in Arlington. Sep floor privacy, weekly rm cleaning, K and pking privs, ride to MIT avail. Men only. M13-5270 (evgs).

Immed avail to sublet: Lg. LR with fp, mod K, tile B, 355 Marlborough St (off Mass. Ave.) CO2-0642 (evgs, except Wednesdays).

Fully furn \$9,700 6-rm ranch, Bass River section, Cape Cod. 3 BRs, all elec K, gas heat, screened porch, partial cellar. Priv circle, 700 ft from beach. For sale, or for rent at \$1000 season, \$550/mo. Ext. 4276 or LI5-2366 (evgs).

5-rm 1st flr furn apt. Spacious, utils, heat. IV4-2332.

Wanted: 1 stuffed albino mouse. R. Kaiser, Ext. 3618.

Immigrant Dutch family desires extra work to supplement small income. Father an exc painter and electrician (nights and weekends), mother an accomplished seamstress. To help them help you, please call Ext. 2707.

Wanted: music stand. D. Sheetz, Ext. 3839.

Wanted: baby car bed. Eckhaus, KI7-3237 (after 7 p.m.)

Wanted: Encyclopedia Britannica or equiv. Post-war edition. T. Egan, Ext. 2609.

Wanted: elec ironer. R. Magee, Ext. 3462.

Wanted: "Aluminum in Architecture" published and distributed by Reynolds Aluminum Co. David Schurman, Dept of Arch.

Wanted: second-hand typewriter, port or standard, reas price, good cond. Ext. 3135 or CO2-1353 (evgs).

Wanted: lg trunk. R. White, Ext. 4152.

Wanted: 4 or 5-rm attrac, furn house or apt for family of 3 in Lexington, Arlington, Belmont or Brookline. Prof. M. Landahl, Ext. 2273, Room 33-408.

Wanted: roommate to share 3 1/2 rm apt with one other girl. \$28/mo, incl utils, 12 min walk to Central Sq. or bus. TR6-2765 (after 6 p.m.)

Wanted: one or two girls to share spacious Marlborough St. apt. CO6-2490 (after 6 p.m.)

Wanted: home for very friendly 18 mos old cat, used to young children, very clean, owners leaving country. R. White, Ext. 4152.

MIT secretary needs roommates. Prefers lg comfortable house or apt in Cambridge, Beacon Hill or Back Bay. CO7-0624 (after 6 p.m.)