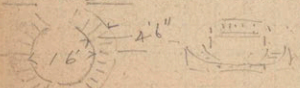


INDEX

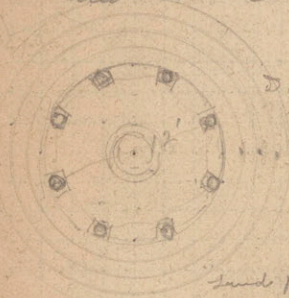
GARDENS	1
DOMES	6
GRILLS	10
MYSEVS	11
CEILING'S	15
CORNICES	18
CHURCHES	30
STAIRS	44
TERRA COTTA	47
DOORS	23
MOSAICS	22
TRACERY	46
CAPS	28
FOUNTAINS	29
ATRIUMS	20
CASTS	45
VILLAS	36
Imbs	33
WOODWORK	13
V. AULING	40
decoration	25
STONE CARVING	32
CLOCKS	26
LETTERING	14
R.R. STATIONS	28
CHIMNEYS	7
AQUARIUMS	38
stadium	43
foundations	42

GARDENS

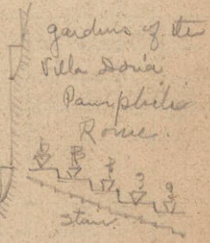
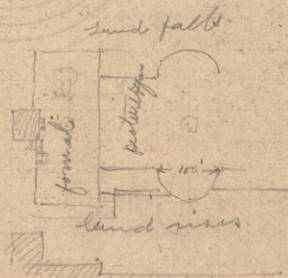
Boboli Gardens - Florence. clipped hedges of
holm-oak in some places cut like trees
giving a line of shadow. also with
cut into hedge for seats, statues etc.
enclosure of main fountain elliptical
150 ft x 250 ft, main path 35 ft wide
lined with cypress. secondary paths 27
arched over with oak, a balustrade on the
highest part of Gardens
with a small garden
back of it with a view
on three sides. Amphitheatrum 225 ft wide

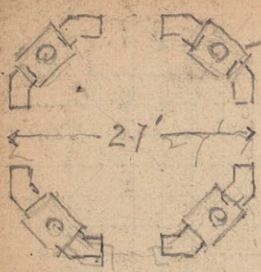


Petraria Florence - like Mrs. Mikolo's



Doric order. no arched windows
Villa Borghese Rome
Temple of Diana

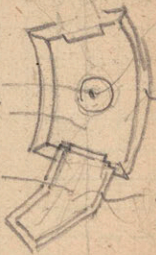




Fountain
water plants

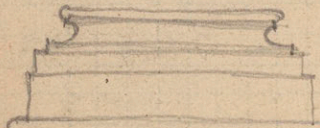
flowers

poplar trees
shrubbery



6' high

14' high



high shrubbery

flowers



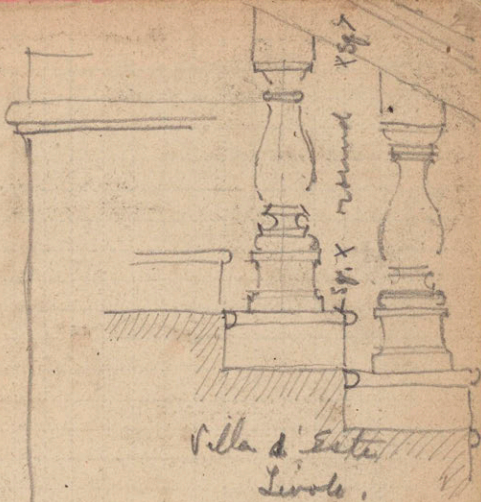
flowers
Sunk



7' 8"

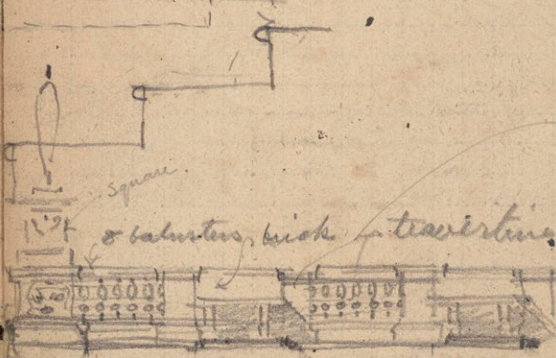
7'

Villa d'ESTE
Tivoli



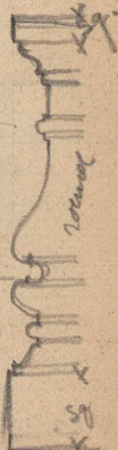
on the other
side of wall.

Villa d'ESTE
Tivoli.



square

balustrade, brick travertine



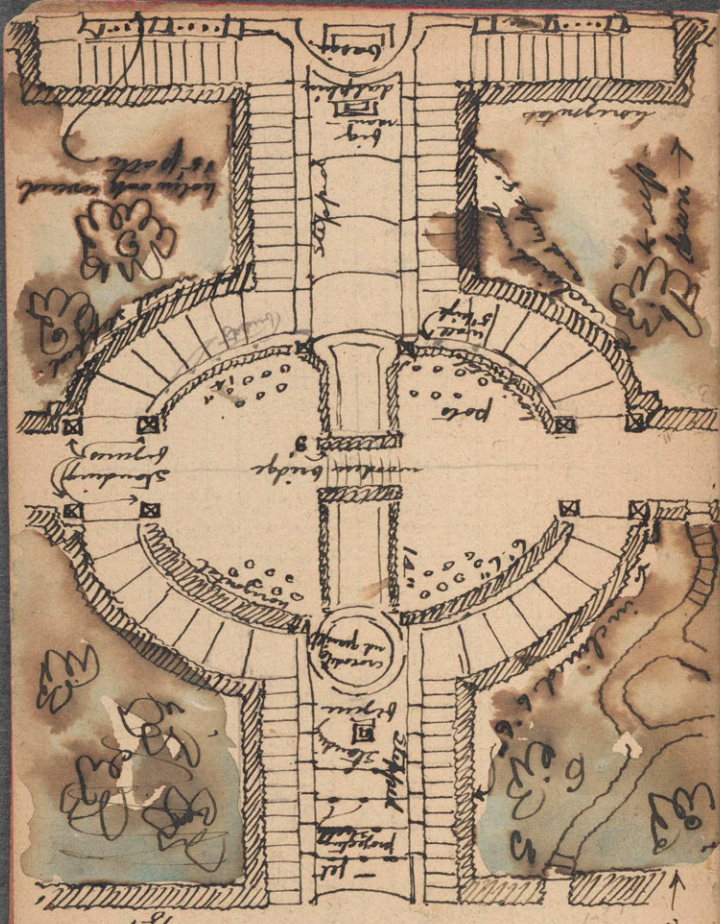
rotunda

fontaine seat seat

forecourt enclosure

Villa Borghese, Rome

this motif is stepped down an
incline very well.



down
up

15' 1/2' high
stone wall

15' 1/2' high
stone wall

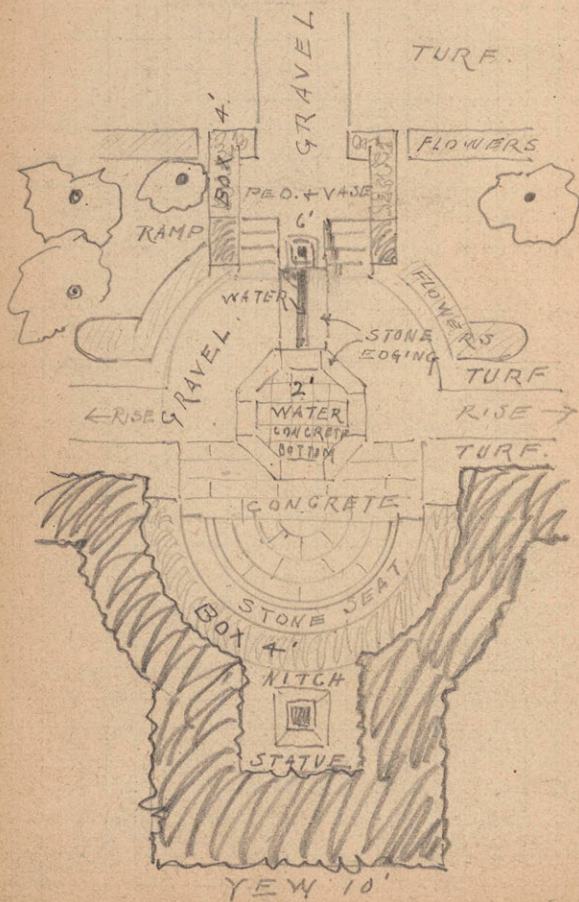
15' 1/2' high
stone wall

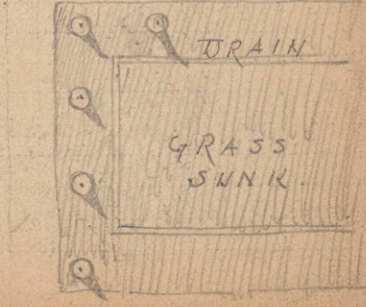
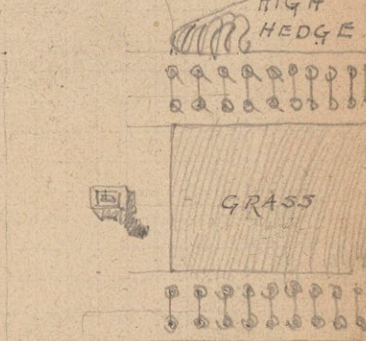
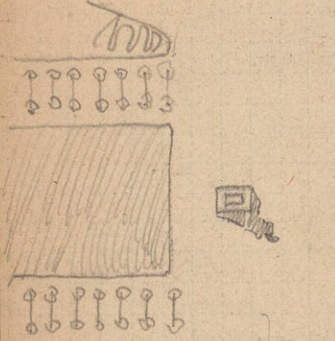
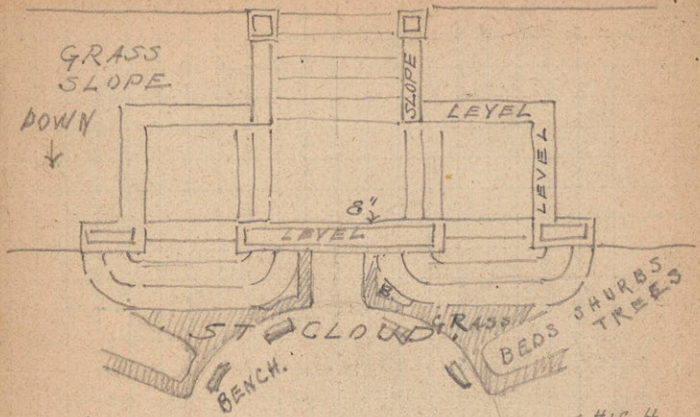
15' 1/2' high
stone wall

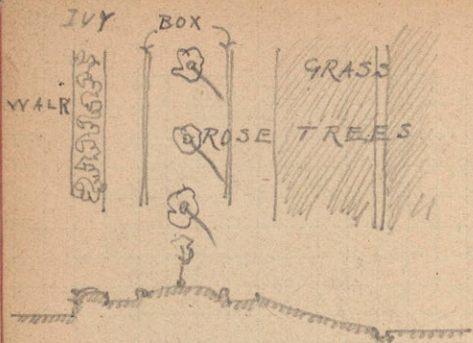
July 20'

COLONN GARDEN
ROMA 13'

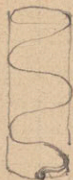
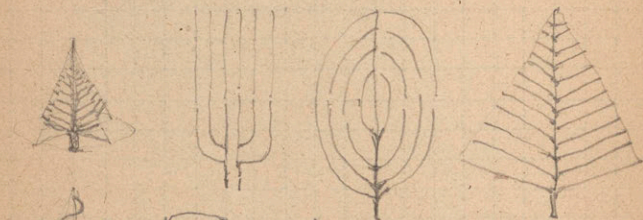
FOUNTAIN BLEAU.







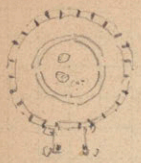
ST. GERMAIN.



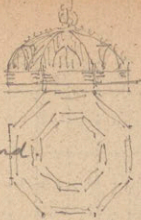
APPLES TRAINED
BOTANICAL GARDEN
LYON.



trained by
poles, wires
and sticks.



covered
lily pond
L. 7. 10. 11.



there being
one piece
parties

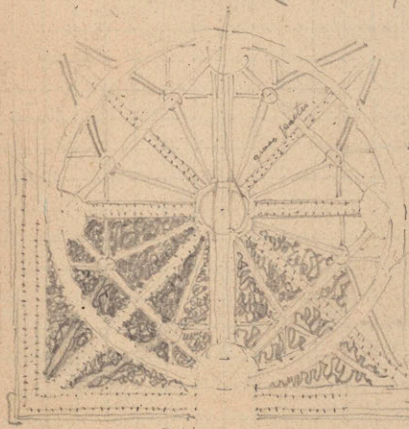
BRONZE
CELLS

In the hot houses
the chimneys came
up 12' behind the
house.



to make large like
this
headers.

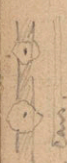
inside the parties are
all radiators.
Parc de la tête d'or.
LYON.



PARK · DIJON.
BY LE NÔTRE.

carriages only.

foot
horses
wall

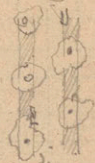


Electric Cars.



foot

carriages



horse

horses



wall.



fountain
St. Cloud



ST. CLOUD.

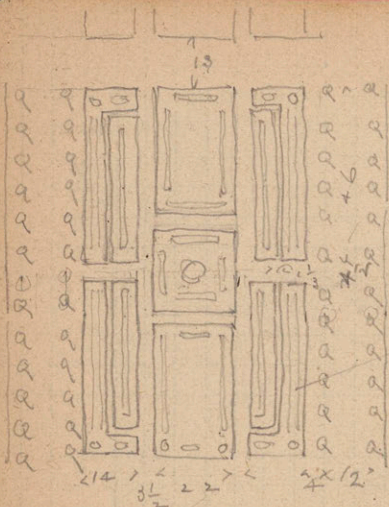
DIJON.

gravel paths.

8 paces,
Jardin des Plantes
Paris.

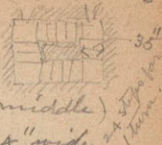
flowers all blue.

two narrow beds



DOMES

DUOMOS + bronze stair case to



Stone core 9" D

30" steps R 8" T 12" (at middle)

Balcony on dome 45" high 24" wide

vents for air back of this gallery. in the dome pointing
 a mans foot 1.40 meter long. Outside gallery
 31" wide. balustrade 34" high thickness of
 dome at S.P. 11" inside Main rib at angle

two intermediate ribs 65" wide to base

The main ribs on the outside project 3'
 covered with marble. roof tiled. a metal ladder
 built inside one of the pillars of the lantern
 to go to the cross. 50" at top and bottom

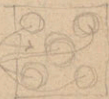
dome of Poggio ch. Florence



black field gold orament
 ring of leaves and fruit with
 white borders.
 blue rosetts with yellow centre with
 border of green leaves on white
 yellow rosetts on dull red background
 dome all in terra cotta.

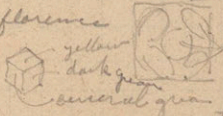
Dome in chapel S. Giotta Venice.

Green and yellow field
 yellow white green blue & black



Dome in S. Miniata Florence

of terra cotta field

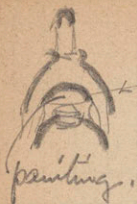


small chapel
 white borders
 ad figures and
 blue ground
 touches of red & yellow



sacred corn - Paris.
 four stone ribs.
 stair.

Pantheon Paris.

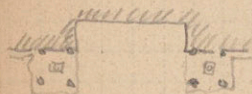
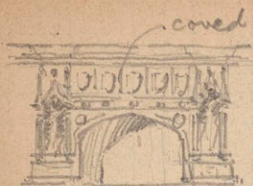


middle dome with four
penetrations to light etc
painting.

Cathedral Cahors Gothic paintings.

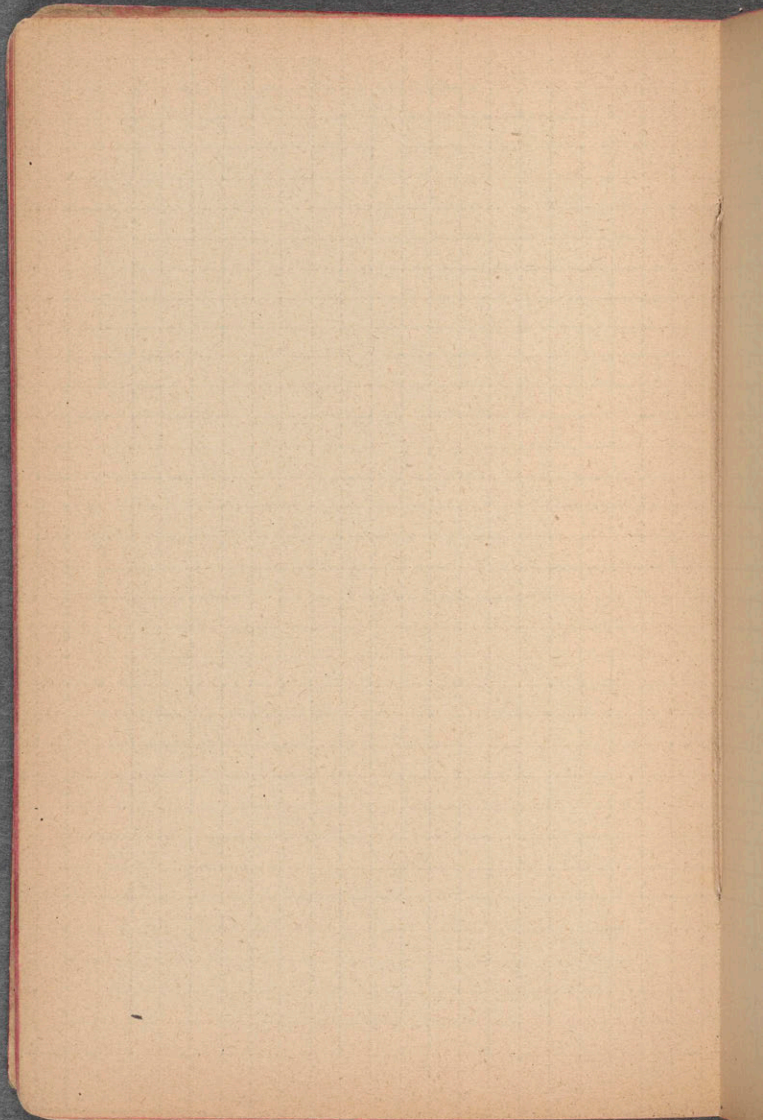


standing figure yellow, brown
background, next on brown
with yellow background, gothic
architectural painting about
it



House of Parliament
LONDON.

Height of Balustrade
at Columbia college approach 2'-9"
Metropolitan Club N.Y. Balcony 2'-9"
University Club N.Y. outside 2'-0 1/2"





N. D
du
PORT

CLERMONT.



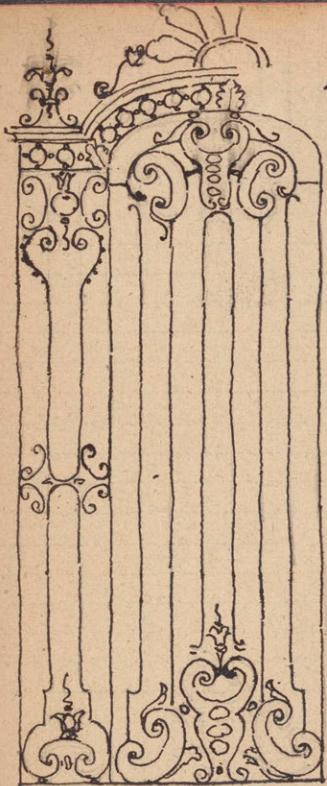
Musei
sent.

some
very good
ones at
Bruges,
in the
Museum.

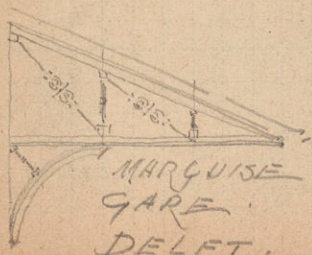
N. D du PORT.
CLERMONT.



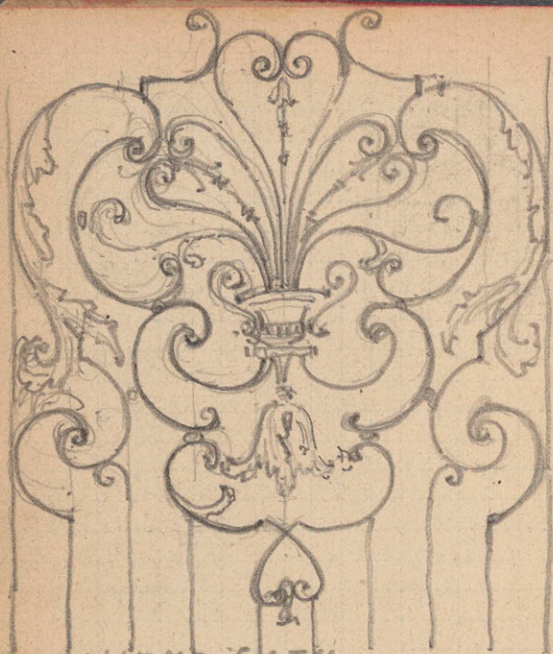
EVREUX
CATH.



Paris
Chapelle
N. D. de la
Consolation



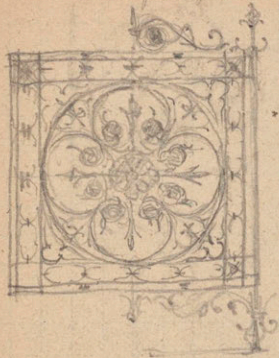
MARQUISE
GARE
DELFT.



AMIENS CATH.

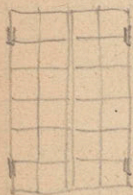
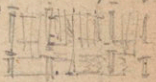
GRILLS

PAZZI Chapell Florence →

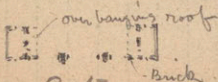


← Caste. Rusty iron wrought iron fence.

Iron gate of the ministry of War Rome
 Posts doric columns cast iron on pedestal
 two hinges one at the neck
 and one at $\frac{1}{3}$ up the column
 pivot at bottom, roller under
 gate at middle

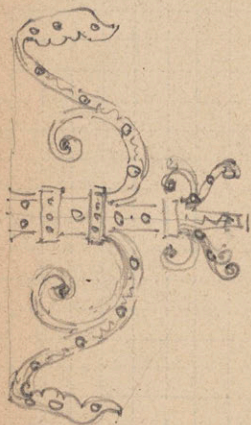
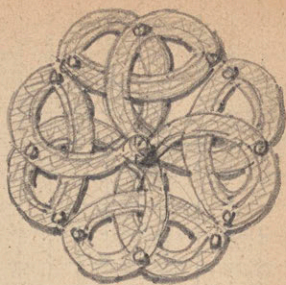
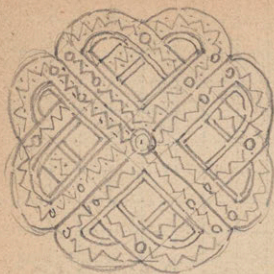


ST MARTHE
 TARASCON.



over hanging roof. Took a photo of this.
 Brick with stone trimmings.
 wooden consoles
 moulded bricks used for panels
 colored brick design in cornice

Entrance Gate
 Zoo - Rotterdam,



IRON-WORK FROM
DOORS OF ABBAYE
AUX DAMES. CAEN.

MUSEUMS

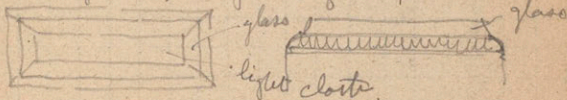
Uffizi Florence. Walls of a dull grey green and a dull red with a tinge of purple are excellent back grounds for Sculpture. Tablets built into the walls.

Bargello plain gran green effect.

Picture gallery Pal Pitti Florence - a back ground of rather dark green silk excellent for gilt-framed pictures.

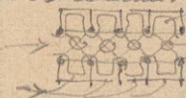
Museo S. M. F. walls of a dark bluish green top lights of corrugated glass. floor of a very dull brick tile. i.e. Castle Museum.

Museum Longchamps, lighting of the picture gallery



Rijks Museum - Amsterdam.

Falling of honor
Statues
Pictures



top lighting
" "
curtains.



one beam.



DESIGNS with Swords and Scabbards.

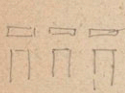
The at Tower, LONDON. Swords arranged
in flower patterns and circular and
whorly-gig patterns, some with
pendents hanging down from the center
of pistols etc. a railing made of
swords was good.

sample
and
the
center
of

WOOD WORK

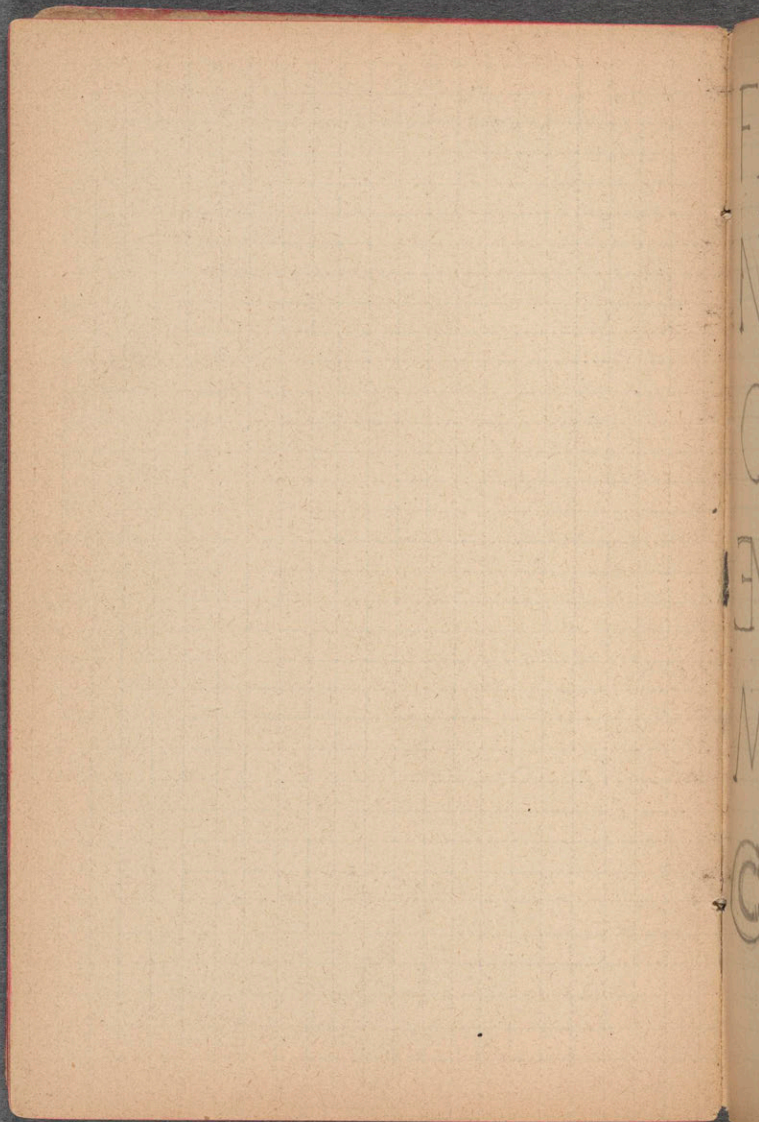
in the chapel of chateau of Chantilly
 excellent wood work below stone
 work. - carved and inlaid. architectural
 lines good.

Compagne Hotel de ville Sq room 20' sq
 panelled to ceiling. 3 sets of panels 10m
 4 ft high. fire place with columns & cornice
 4 ft high. dove pilasters line with iters
 about the room. scrole carving in frieze
 except one chimney - trylight line. a
 heavy cornice $\frac{2}{3}$ of the way up lines
 with doors and $\frac{3}{4}$ motif over chimney
 ceiling panelled colored with red & blue
 white arabesque ornament, a band
 of green runs around the frieze under
 the ceiling, with white arabesque ornament
 floor bearing bone work.



perforated animal carving at Pierrefonds
 and foliage carving at Gout. H. del.





FINE ANT

N X P T

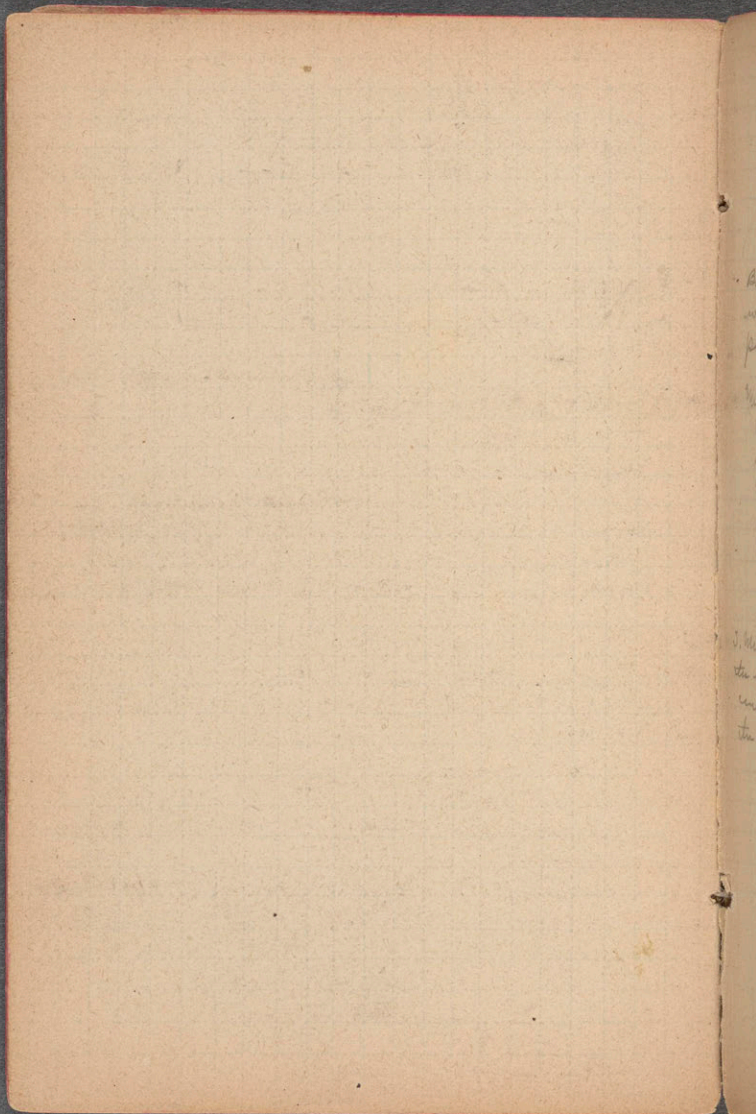
O O A R L

E N V R A V

M P E P D

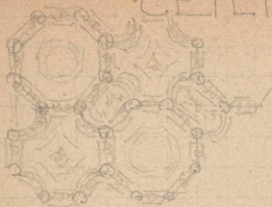
C

ALL FROM ST. GERMAIN.



CEILINGS

18



by San Gallo
drawing in the
Uffizi Pal Florence
a little bit complicated
See p 16.

- Bargello Florence ceiling of decorated timbers with a frieze of painted shields above plain colored wall below.

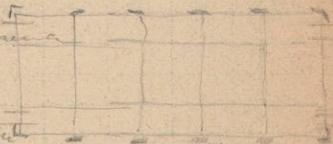
Michaelangelo's house Florence

beams white with gilt ornament

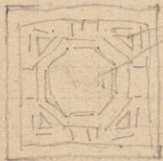
pedastels of blue green

gray no pedastels. Dado of light

green rich pictures in the ceiling and walls. Mosaic 1 red 2 black 3 w.

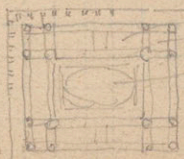


- 5. Muciate Florence - wooden timber ornament on the edges of beams. color mottled at ends and center of trusses (blue red with a little gold) on the brackets.



paintings

deep frieze. 20' sq room



paintings

25' x 30' room.

ceilings from the
Pal. Vecchio Florence.

Pal Pretorio Pistoria, indian red general
impression, also blue and green
with white groins.

See page 30 Fucca Catti.



ribs dark green with gold spots
general effect grey
gold ground. blue & red figs

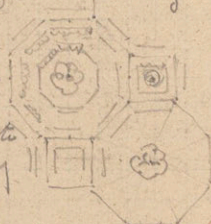
Large nich sitting temple of Venus & Rome



very good, & whole byzantine from S. P. to
even diminishing in size.

The best coffered ceiling is of this
modern
examples

Basilica of Constantine
Basilica of S. Peter in
St. Peter by Bramante
white and gold, very
effective.



plaster arabicus diameter

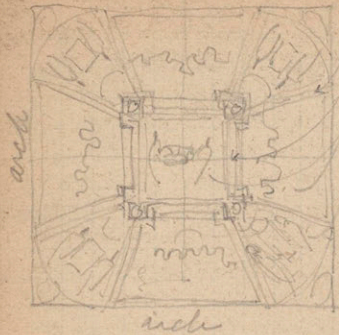
figura
base



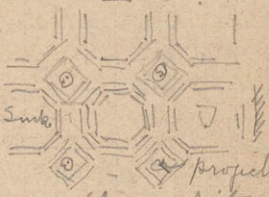
red shell
blue spot
gold leg rodent
all the rest white

arch decoration Villa Medicea
Rome. See p. 3

another spot was a small coffered dome.



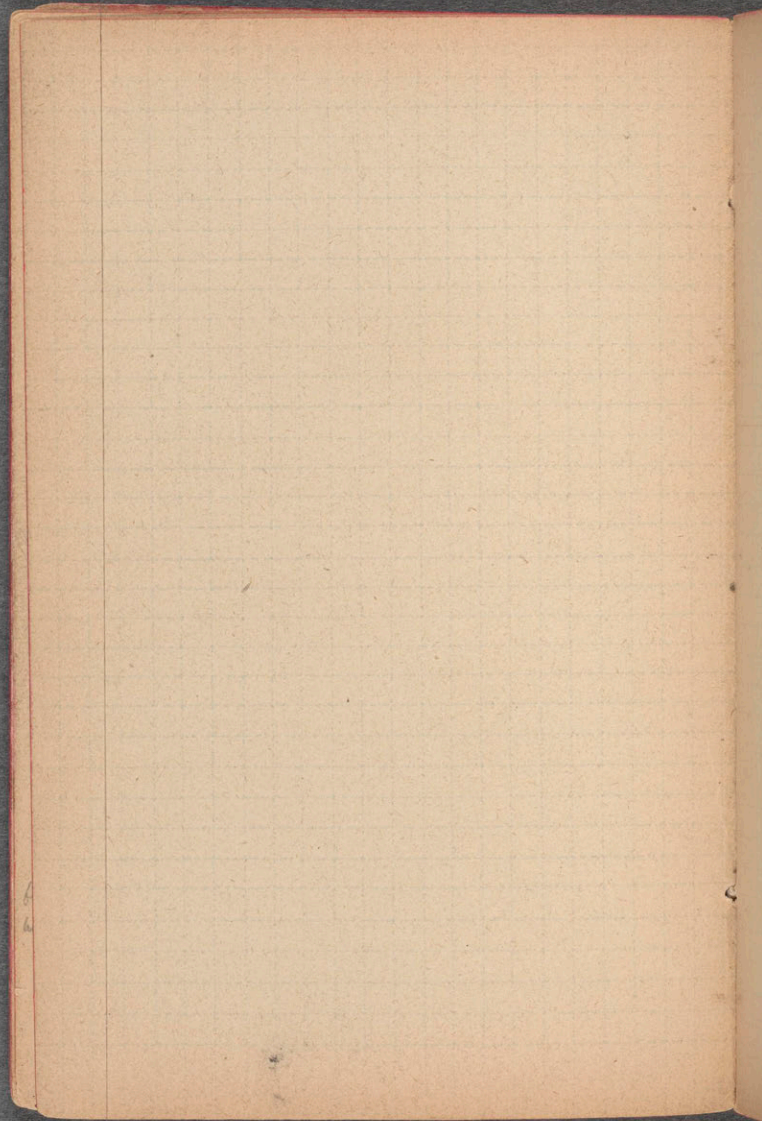
borders white + yellow
 paintings light
 portion of a perfect
 dome.
 Pal Lateran Rome
 2nd floor archade

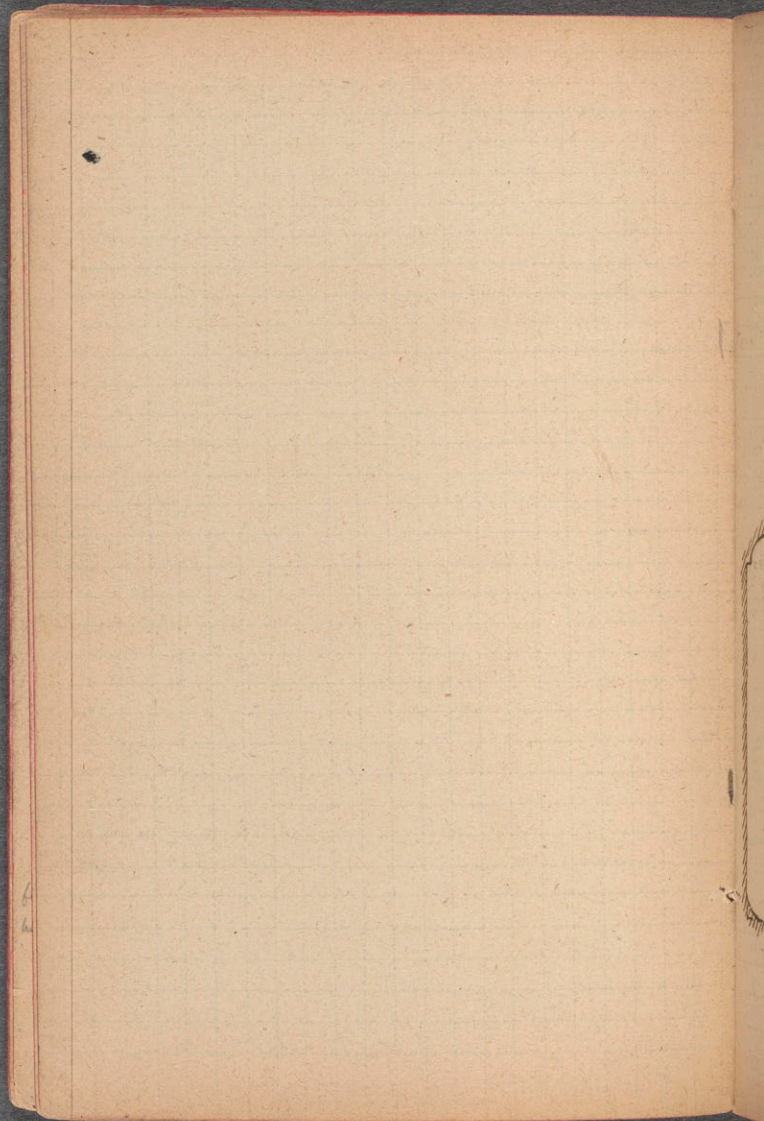


Chateau Chantilly
 tail of the stages.
 cornice green + gold
 ceiling oak color (yellow red) blue white, and
 gold many colors in the shields in the octagons

Rouen. Count d'arsign. coffered. mahogany
 gold and a little blue.

Blois. Small beams decorated with gold
 green white, blue, flesh-color and projecting
 bits of ornamented brass.

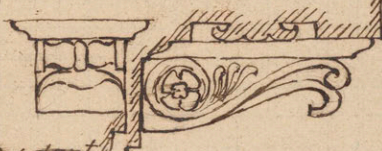




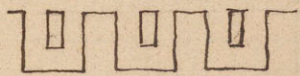
CORNICES

1.9 L
2

64
65

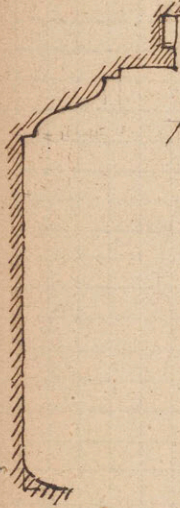


egg + dart



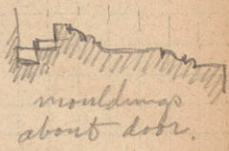
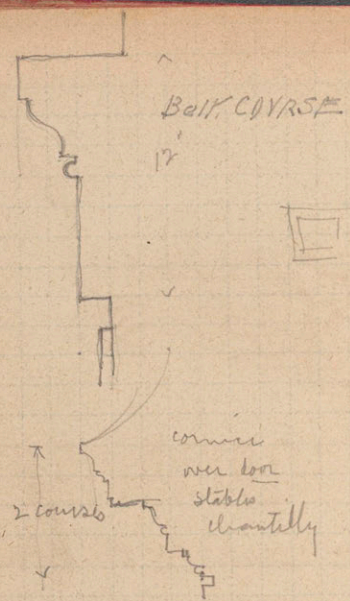
FROM A SKETCH BY SANGALLO

VFFIZI PAL. FIORENCE



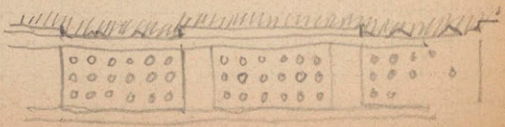
TWIST. SECTION
OF A TWIST-
GORE OF COLUMN
CATH FLORENCE

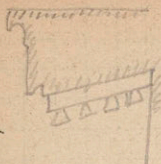
Balk COURSE TAL. CANCELERIA
ROME.
10' above the ground



NIMES

STOA
ATHENS





Treasury of
the Athenians
Delphi:

At
gla

Con
con
of
M

con

con
the

Por
at
of
in
to
2

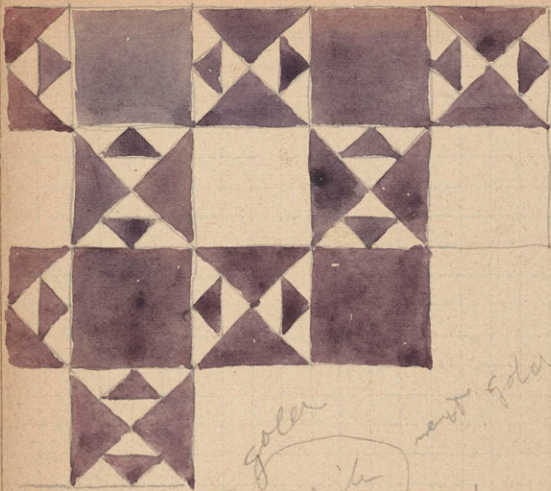
At Villa Petraia, atrium covered with glass.

Courts of S. Paolo Fuori Rome and, better, court of Lateranum Rome excellent examples of twisted columns etc inlaid with mosaics. Solid piers and arches |||

court of Pal Cancellaria by Bramante Rome

court of House of Parliament one of the best Gothic ones in existence.

Pompeii. House of S. Netti. The atrium gives us an excellent idea of the charm of an old Roman court. Bronze and marble fountains (boys) marble basins, slender decorated columns with supporting heads, marble seats and verdure.



S Croce
in
Gerusalem
Rome.



Mosaic from S Crisogono
Rome alexandrian work.

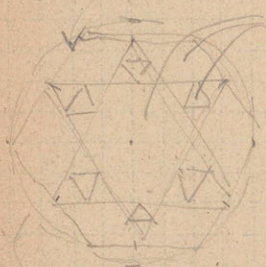
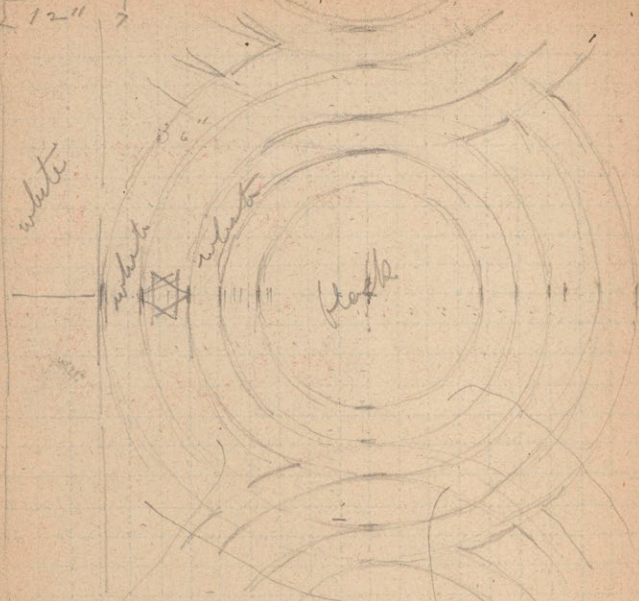
12" 7

white

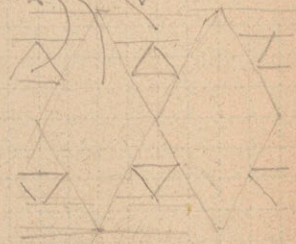
white

white

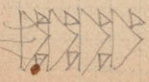
black



black



black



white = streaked white blue
 + yellow + red
 black = a deep red with
 white streaks

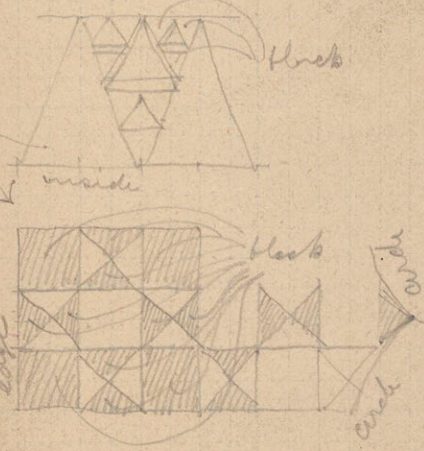
MOSAIC

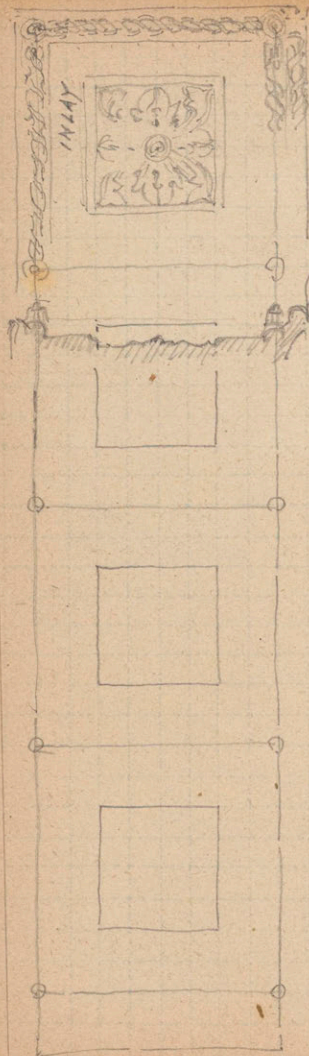
Laurentian Library Florence. of yellow and red
Marble - the yellow inlay copying the ceiling above
with its beams and renaissance decoration.

8 square ^{with} ~~is~~ ^{is} a diamond



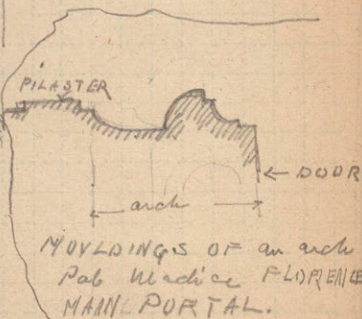
MOSAIC FROM OVIETO CATH. MAIN ARCH
almost full sized. on a twisted column.



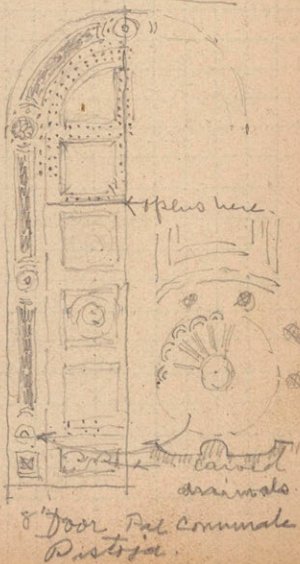


SECTION OF TWIST
DOOR BARGELLO
FLORENCE.

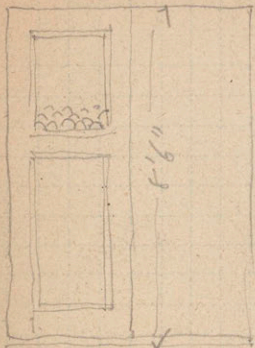
DOOR BARGELLO
FLORENCE.



MOULDINGS OF an arch
Pal Medice FLORENCE
MAIN PORTAL.

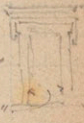


D O O R S



Solid bronze doors
 baths of Caracalla
 In Baptistery of the Lateran Rome

Door in Pal
 Cancellaria Rome
 by Vignola

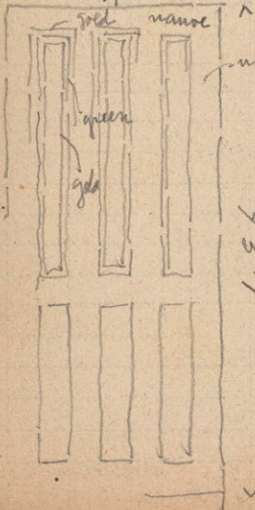


9'6"

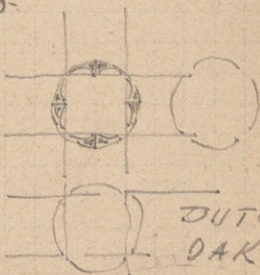
A similar one in the
 Pal Sacchetti. Rome.

Pal. Sciarra Rome doric columns on pedestals

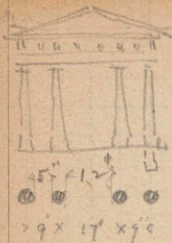
at Beaupris an excellent Romanesque
 door in the church of St. Stephen.



more space here
 below.



DUTCH,
 DAK.



Cassian's gate
 Athens
 Doric order.



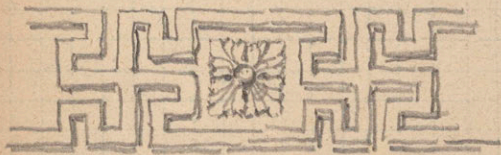
wood gate to
 High Altar
 Greek Church
 Athens.



NIMES



ST GILLES



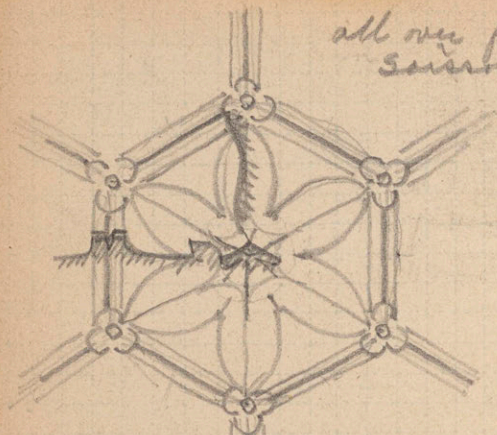
ARLES



BIJON.



all over pattern
saisson



← 20.5 cm. →

gold letters
& crown



mauve ground,
blue orn.

gold
field,
dark brown orn.

brown field dark blue
ornament

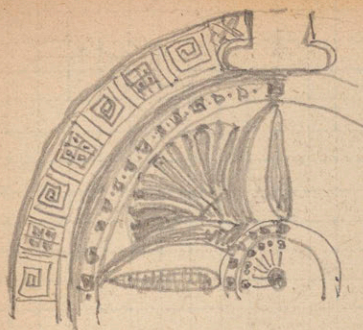
dark brown field gold
ornament.

mauve field,
dark brown orn.
light mauve, blue orn.



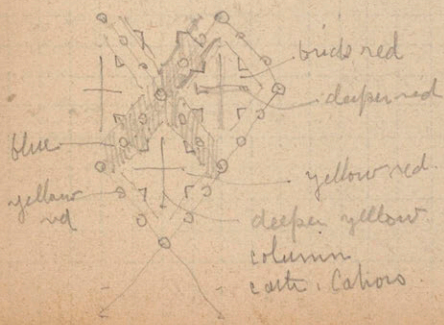
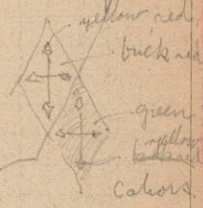
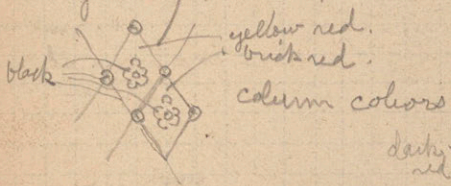
light mauve, brown
field.

all patterns outlined with
dark brown. Blow
wall paper.



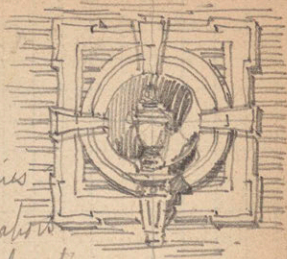
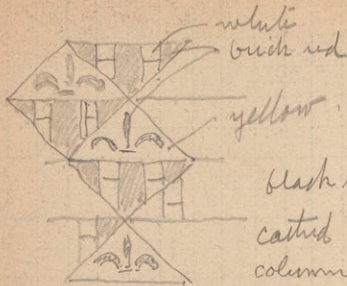
red + yellow
Lower

ceiling of niche at Cahors Romanesque
above the cornice of the S.P., a
cristallated machicolated battlement is
painted of a yellow-brown. above
this a blue sky with stars placed
regularly.



all in Brick
a Frieze
Haarlem.

AMSTERDAM.



black lines
 casted column
 column decoration



cap.

rich
 brick
 red

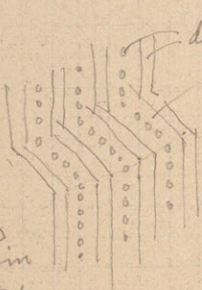


gold

rich
 dark
 red



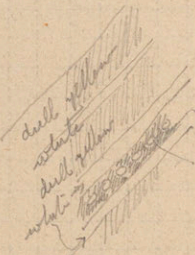
Column
 decorations
 St Serrin
 Toulouse.



dull yellow
 dull red

black
 lines

when two
 columns are
 placed together
 the twists go
 in opposite
 directions.



dull yellow
 white
 dull yellow

black
 dull yellow

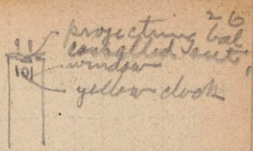
note!
 a 2nd
 column
 similar but
 with the
 addition
 of gold
 spots and horizontal bands
 of gold at top and bottom.

ERDAY

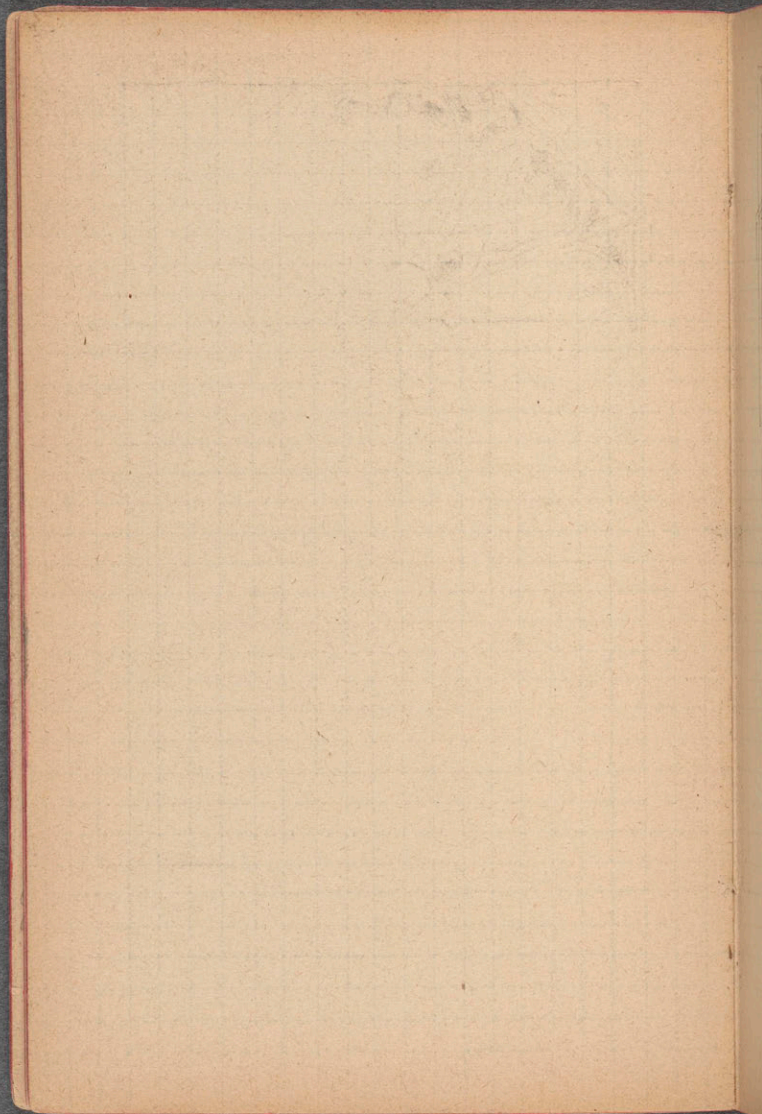


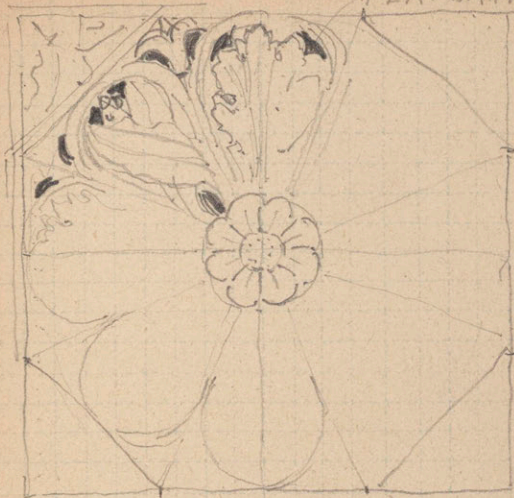
CLOCKS

AT ST. GERMAIN



for
 il.
 de
 in
 in two
 was an
 de by the
 twist of
 Apple
 stone.





PERFORATED

DOOR

SAN

LORENZO

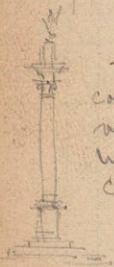
FLORENCE

ONE
PANEL

□	□
□	□
□	□
□	□

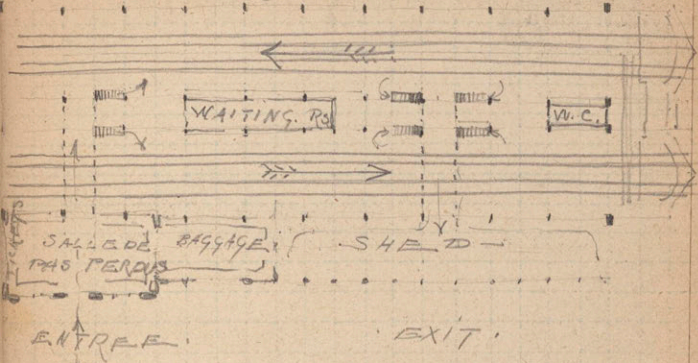


ancient cap Fiesole flowers.

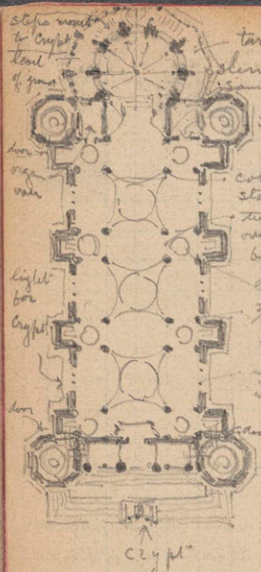


column in front of S. M. Maggiore
very tall 46 ft. no architrave.
high circular pedestal above the
cornice.

- R.R. STATIONS -



ELEVATED STATION
THE HAGUE



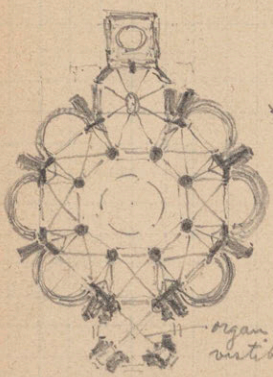
tarnasse level of church floor.
slender columns same height
sacristy

columns on ped. standing angle over it.
two small columns over three arches showing black space over them.
dome 2/3 the big ones same base.
window 20' from floor with a balcony at base vaulting very much stilted.

caps, base and figures white marble.
columns grey marble.

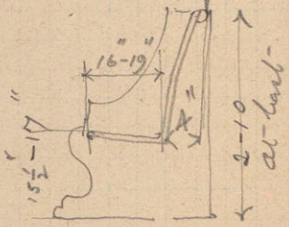
running all around mosaic de enaite undecimate.

N. D. de FOURVIÈRES LYON.



organ over vestibule.

church pews



cushion 3" thick -
2 1/2 to 2 3/4 able use

STE MARIE.
BRUXELLES.

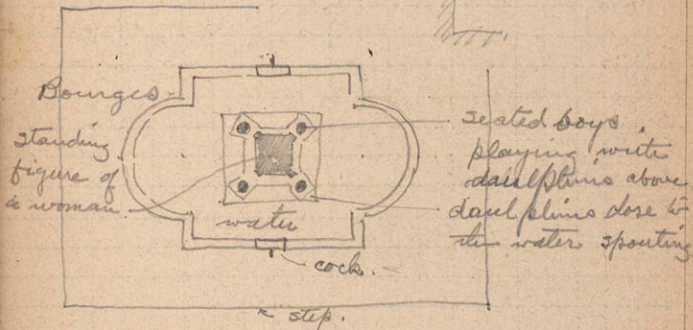
FOUNTAINS

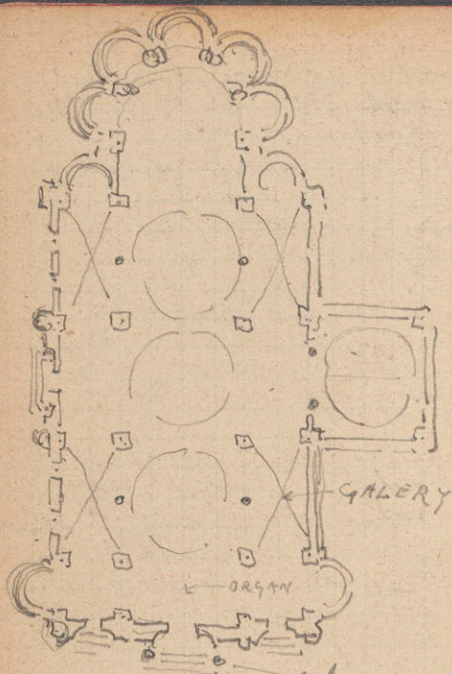
Good ones at Villas Castello and Petrarca
fountains.

division basin a big shell. water
falls over at equal intervals



fountain Pa. Popolo
Rome.

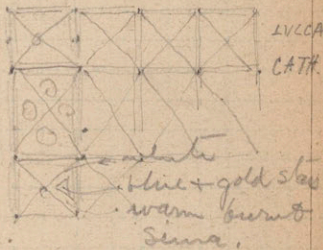
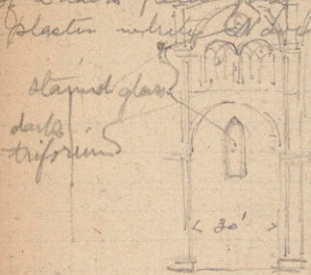




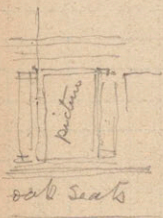
columns carried on winged.
 STE. MARIE. Bulls,
 ST. ETIENNE.
 Modern Roma Byzantine.

churches

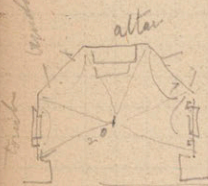
S. Spirito Florence interior. columns (27' ac)
of a dark green gray. floor tiles of a warm red
plaster white. 50' wide



stone of a warm gray.



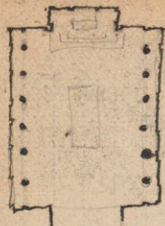
apex in Pisa Catted. circular
architecture white marble
boths architecture and picture
coincide for their full value.
very good in position.
Picture above what is drawn
and gold mosaics in ceiling.



an octagonal chapel is a very
good shape for tombs windows
altars etc. Popolo Rome
St. Pierre Caen. France.



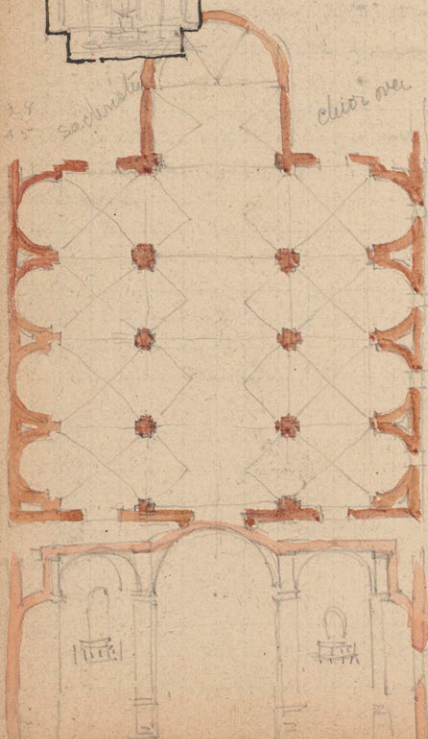
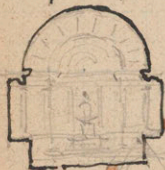
S. Ignazia Rome



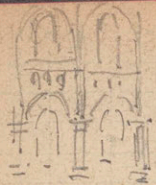
ceiling coffered white back
ground gold decoration
gray marbles columns darker
square coffers light from
above light



barrel vault.



Plan of S. M.
della Civita
Roma
110 feet.

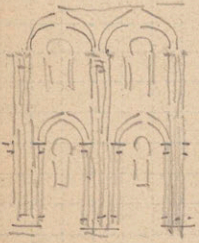


St Paternus Orleans
excellently restored. good
details. good proportions.
12 cent. vaulting ribs
descend only to caps of
lower big columns.

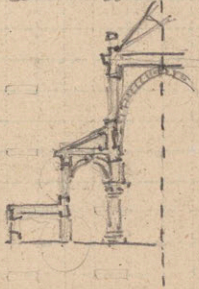
Chapell Ambroise



carries cross rib of nave (cap + abacus)
carries groin rib of nave (abacus only)
carries soffit of arch (abacus)
carries new rib of arch (cap + abacus)
carries longitudinal arch (abacus)
carries groin rib of arch (abacus)
carries cross arch of aisle (cap + abacus)



st. Salvi Albi.



SE N/S

Some changes
 from Sp. to 8
 sided by a squinche
 of 3 arches.

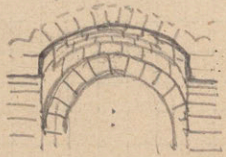
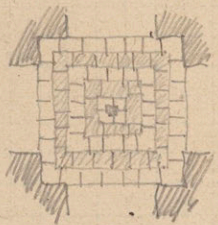
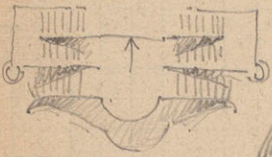
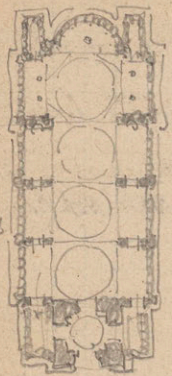
N. O de la
 Guade
 Marseille.

to circular by an arcade
 over the columns
 of the drum.

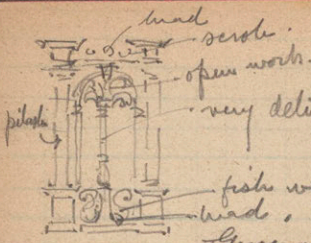
Have lighted by a clerestory
 all arches circular.

stone of alternate red and
 whitish marble.

note.
 open,
 but raised
 some 8'



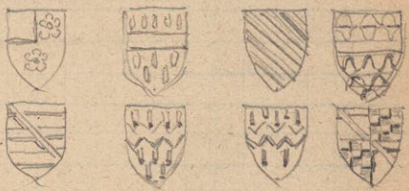
Vaulting in
 the crypt
 of N. O de la
 Guade,
 Marseille.



very delicate renaissance column.

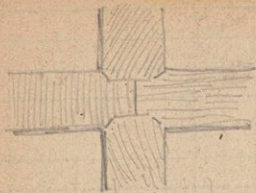
fish with acanthus leaf tails.

General proportions very much slimmer. Orleans. N.D. de Recourance



TATTERSHALL CASTLE, ENG.
S. K. MUSEUM LONDON.

FOUNDATIONS -



construction under
flagging - temple
of Appollo Delphi.

TOMBS
at Fiesole, Florence,

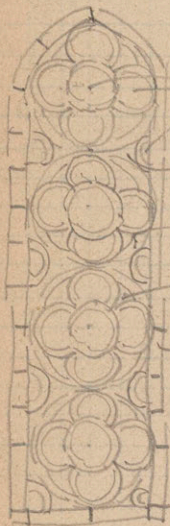


side

33

Bas reliefs

S. Lorenzo fuori ^{Rome} ^{reliefs very} ^{accentuated} ^{sculpture}
flat principal masses and their surfaces flat. very decorative.



figures, blue field borders
of yellow + red.

all over pattern, blue + red
with dots of yellow.

border of yellow, red + blue.

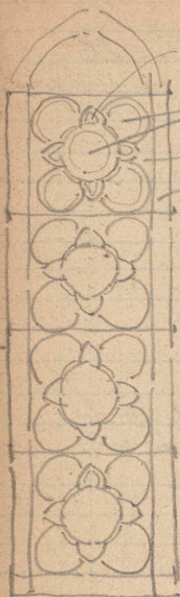
gothic foliage.

gothic foliage.

Joseph Blau.
11 ave des Lillets
Montmartre Paris.

Line Olivier Messon
Rue Daufest
Rochereau 14 Bis.

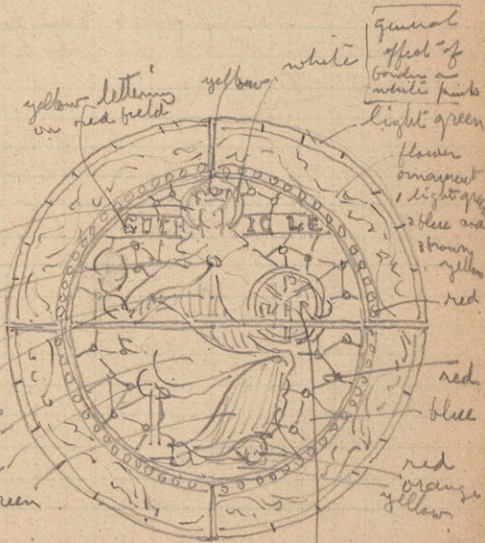
stained }
names of glass }
designers give } Lameon
by M. Pascal Oct. 01. } 52 ave Turgot Paris



foliage.

figures
all over pattern
got the foliage

color scheme
the same
as that on
opposite page.



General effect of border a white pink light green flower ornament light green blue and brown yellow red

yellow lettering on red field

yellow white

red orange

pink

blue

white and holding up a red cup

pink

white and red chairs green

flower ornament light green blue and brown yellow red

red blue

red orange yellow

A.D. DIXON.

yellow lettering on red field with white border

Blue red white
flower ornament

dark green spot

blue
white

blue back ground

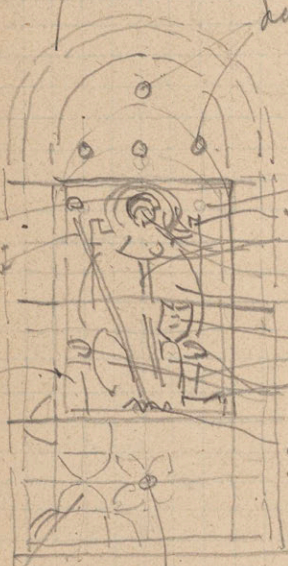
red
white

green back

red
white back
orange

white feet

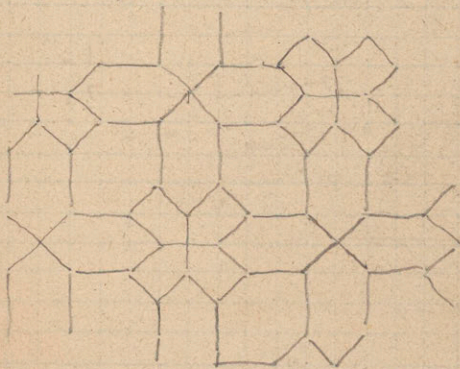
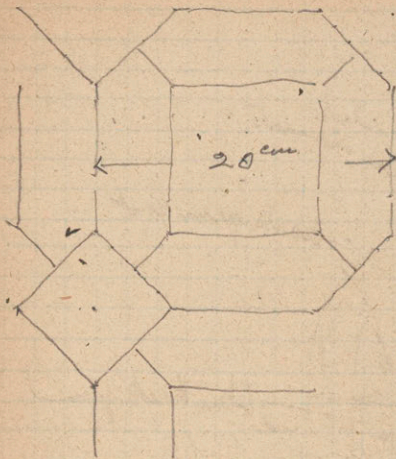
red



all over pattern
light green + white
all about colored antlers
dark green spot

width of lead
strip 1 cm.

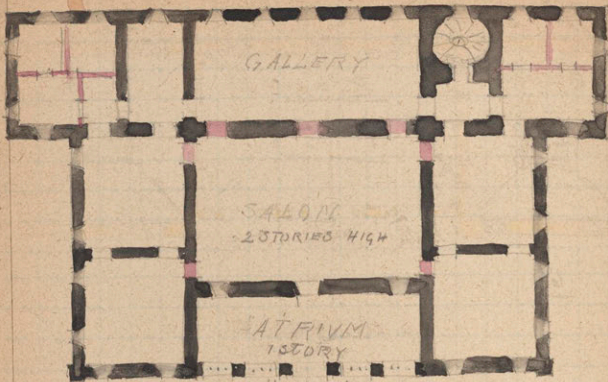
Blais.



GARDENS

GARDENS

GARDENS

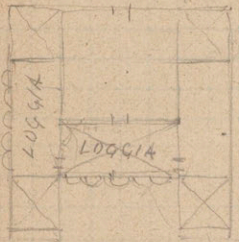


← ROAD →

VILLA BORGHESE
ROME
GARDEN

NOTE - RED IS
2ND FLOOR.

GARDEN

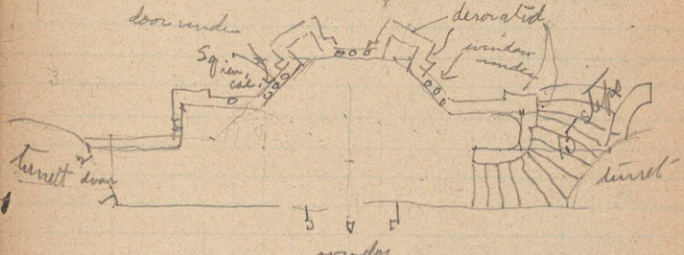
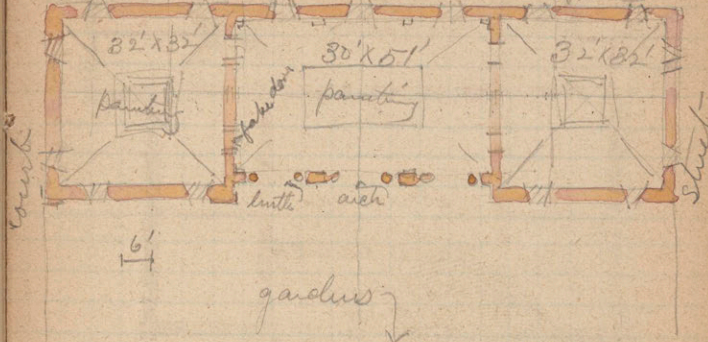


road
stables

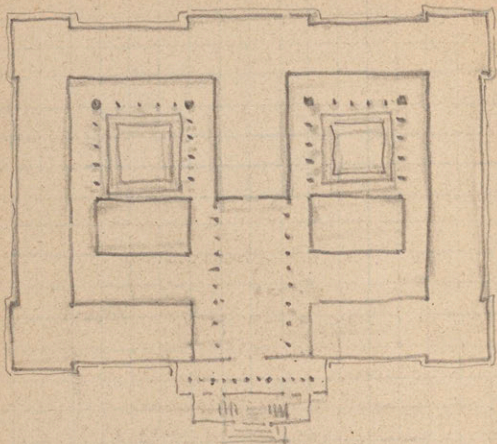
Villa Farnesina
Rome.

GARDEN

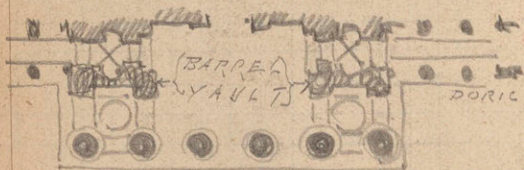
one story only, Casino Pab. Rospigliosi³⁶
Rome



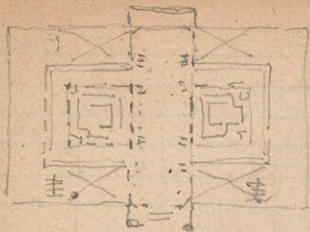
under
azay - le - Ardouan



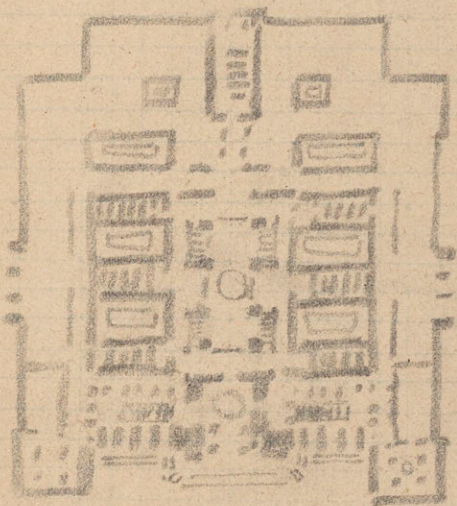
PALAIS DE JUSTICE. ST. ETIENNE.



CORINTHIAN.
PALAIS DE JUSTICE NIMES.



PAL. DE JUSTICE TOURNAI

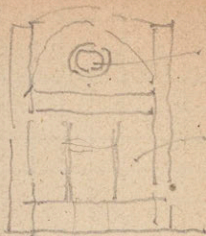
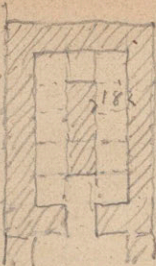


PAL. DE JUSTICE
BRUXELLES

AQUARIUMS.

Naples

Light enters
interior only
thro' small
circular
windows



Small
window

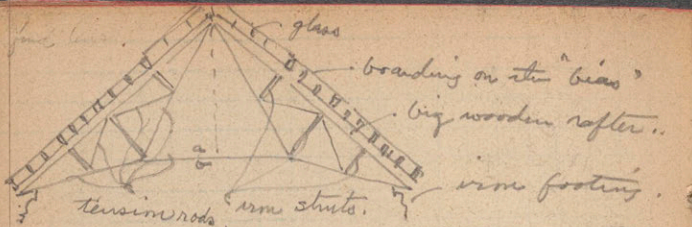
glass

one bay

and water
of ephelation tanks.
Light well handled.

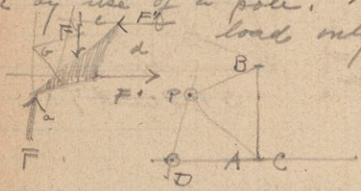
N.Y. Aquarium - large circular basin
at center of building - food down from
its fishes, water till sides & bottom.
Similar smaller tanks about it.
Small cases standing about,
distribution of cases like the Naples
ones along the wall all round the
room, - also in a partial 2nd story
with stair cases leading up from
the central room. very good

in
down
very
to
the
around
2
up
up



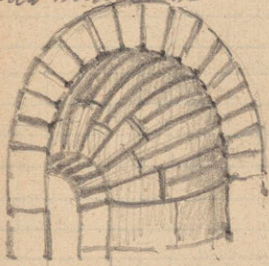
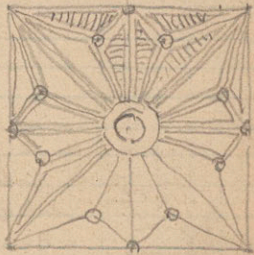
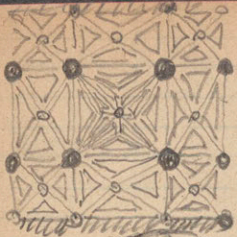
TRUSS TRAIN-SHEDS P. L. M. FRANCE

find tension in a b by moments about a peg
 or by use of a pole. two couples for dead
 load only.



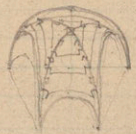
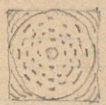
R.R. BRIDGE.
 ANVERS.

CROSSING
ST. EUSTACHE
CLERMONT.



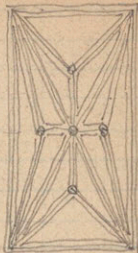
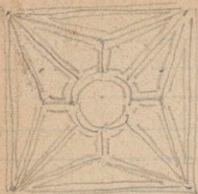
ST QUENTIN

ET FRONT PERIGUEUX.

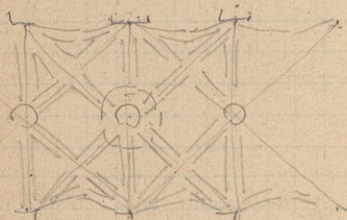


tuck and stone vaulting game
Tournai.

V A W L T I N G



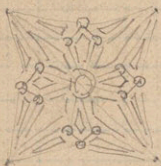
Crossing Beauvais Nave



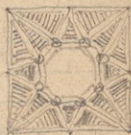
CHOIR

COMPIEGNE

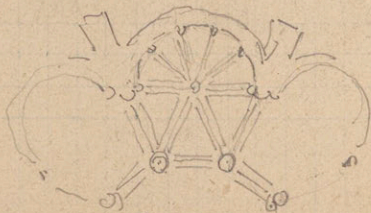
ST ANTOINE



aisle



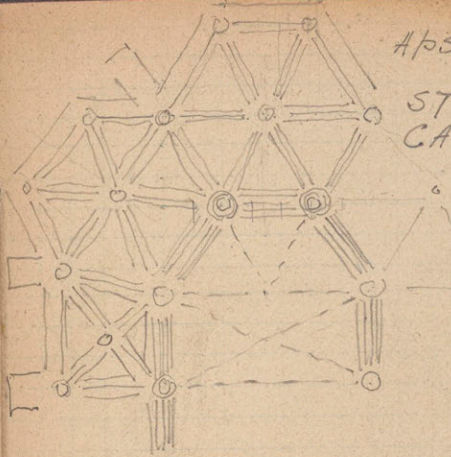
TOP LIGHTING
MARSEILLE



SOISSON CATH

APSE

ST. JEAN
CAEN.



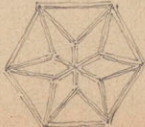
NOTE!

THIS SHOULD
BE A PER-
FECT HEX
AGON.

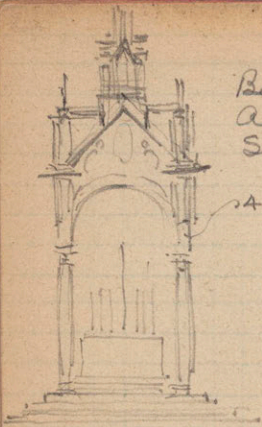
Renaissance vaulting in chapels of
St Pierre. Caen. Strong. the ribs
spring from the springing plane of
round headed windows and
support a flat paneled ceiling
plan of ceiling star-shaped.
pendants where ribs meet.



CATH. ORLEANS.



CATH. BRUGES.



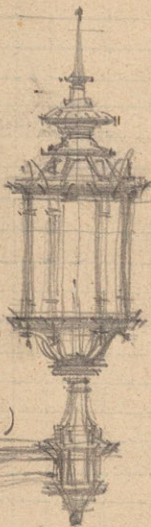
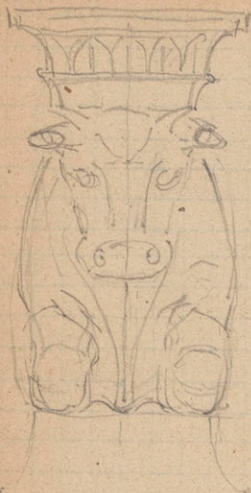
Baldichino. Rome
Academy of modern arts
Sketches.

4 evangelists on each corner



open Gothic window
mosaic Baldichino
S. M. Cosmedino. Rome.
Gothic. excellent

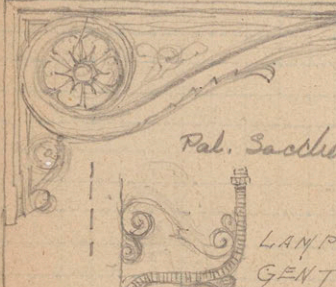
Vatican Museum
Rome.



strong
lamp
simple

the
side

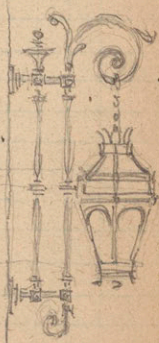
(Note: Bracket smaller)



Pal. Sacchetti Rome.



LAMP
GENT.

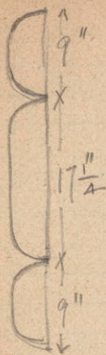


GARE
DELFT

26 1/2

9

17



rustication
 very good
 Banka Rione

Murine

Handwritten notes on the left margin, partially obscured.

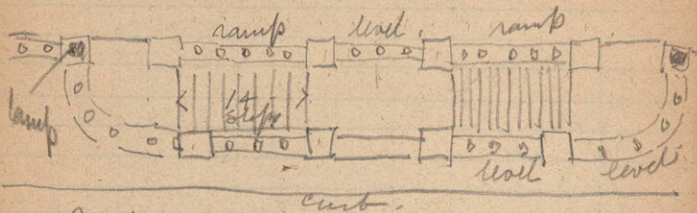


CAPE
DELFT

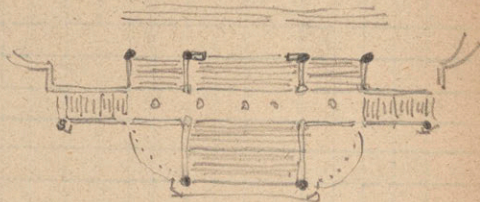
with her
tips about
it.

STAIRS

PAL. YFFIZI 19 ft wide.



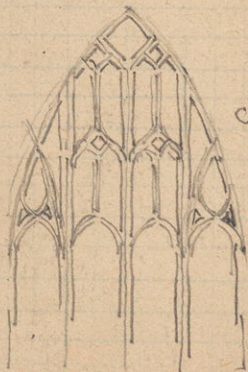
Blais, 118 ft.



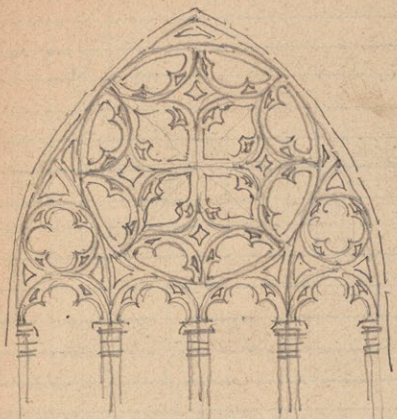
CATH. BRUXELLES



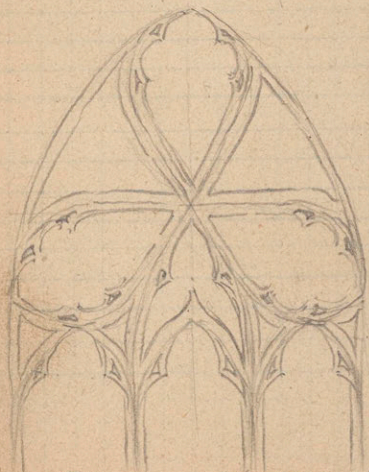
MONTBRISON.



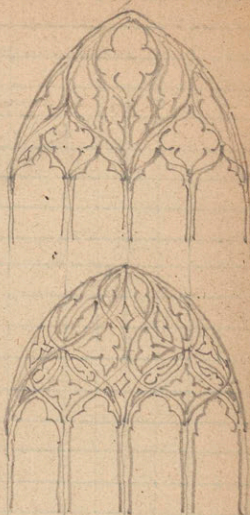
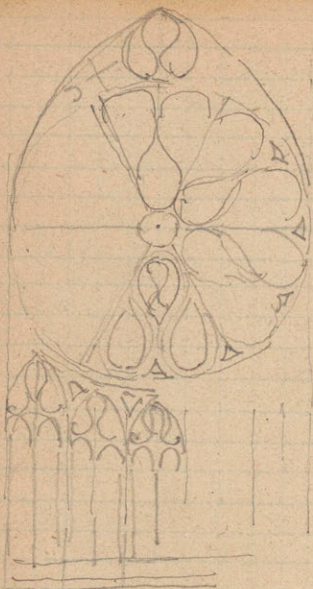
COVENTRY



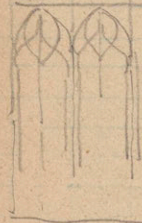
MUSEUM TOULOUSE



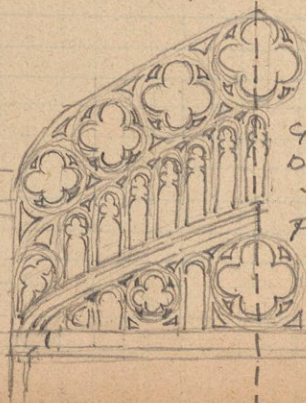
OXFORD MERTON



LIMOGES CATH



Rose window Beaumont



GOthic
DECORATION

PETERBORD

Casts.

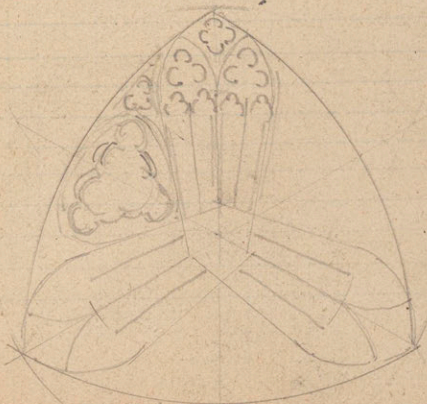
Villa Medici Rome a very good collection of architectural casts

Remains - casts of the gargoles up in a tower of the Cathedral.



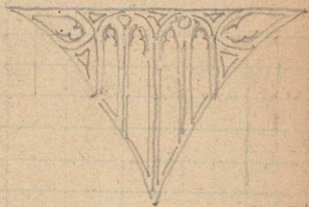
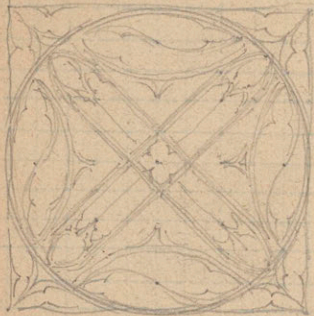
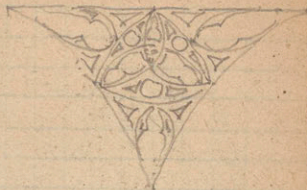
Orleans
main

Angers - good Renaissance caps and pilasters and decoration. Hotel de Pance



AMIENS.

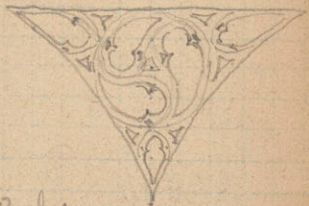
TRACERY



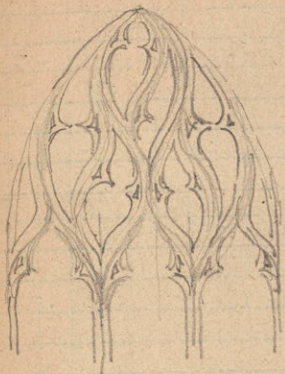
LISIENX CATH



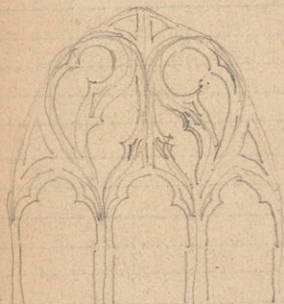
BARGELLO
FLORENCE
CARVED OAK



Balcony
Beauvais



WINDOW BEAUVAIS - BRUGES.



COMPIEGNE.

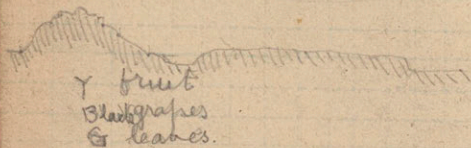
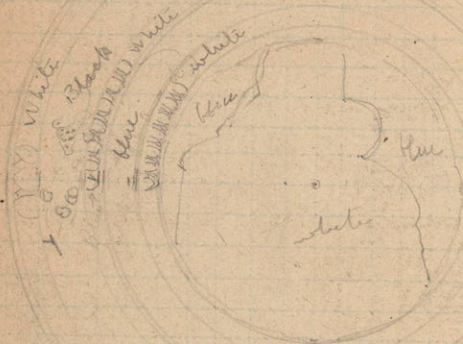


BRUGES.



N. D. du PORT
CLERMONT

TERRA COTTA



LVCCA DELLA ROBBIA. BARGELLO. FL.
Splendid examples in Florence. i. Or San Michele

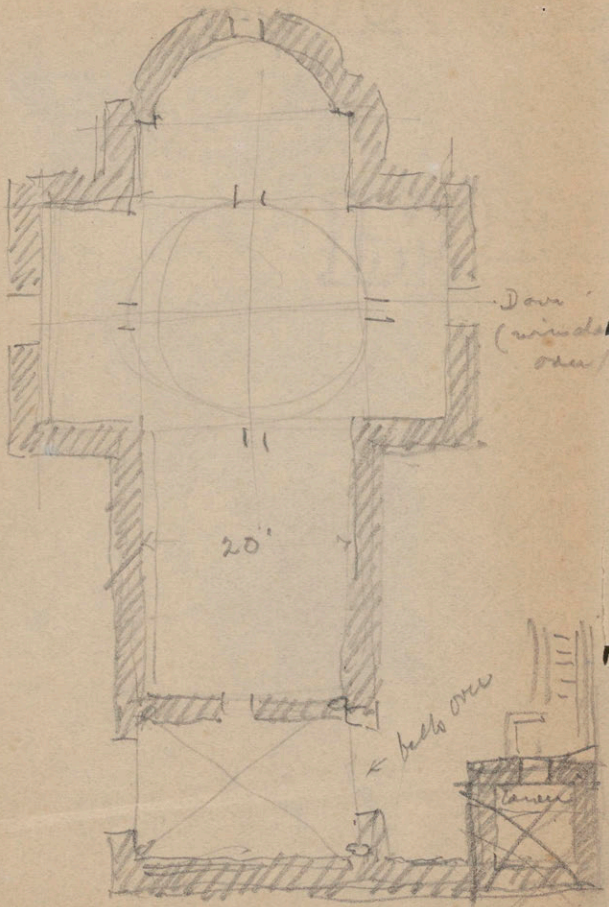
50



LONDON

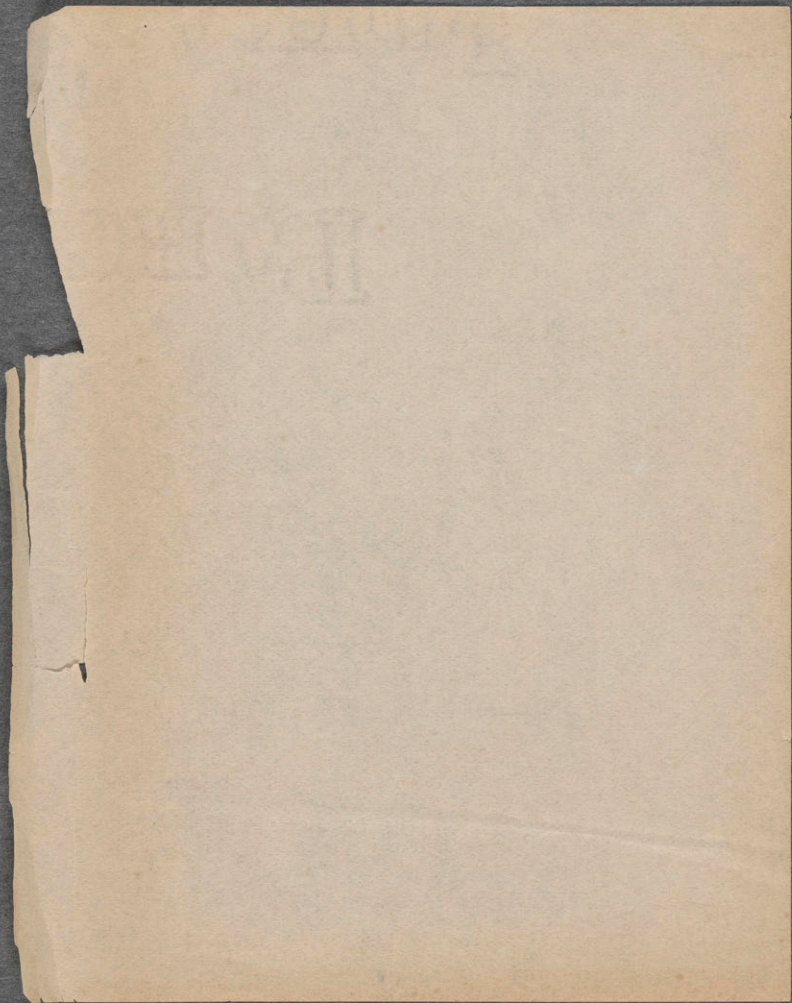
BARGELLO
LONDON

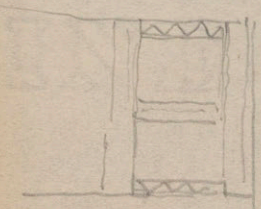
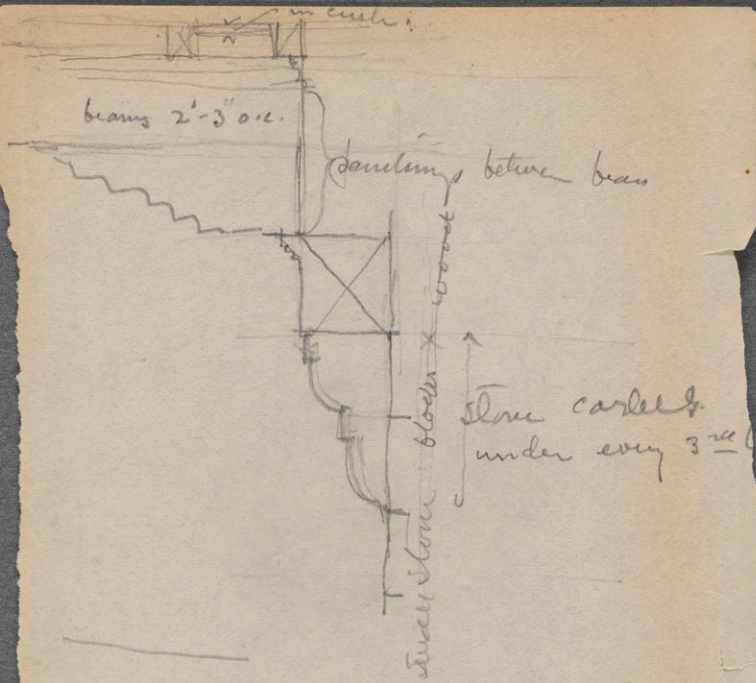
S. R. MUSEUM
LONDON



Linder

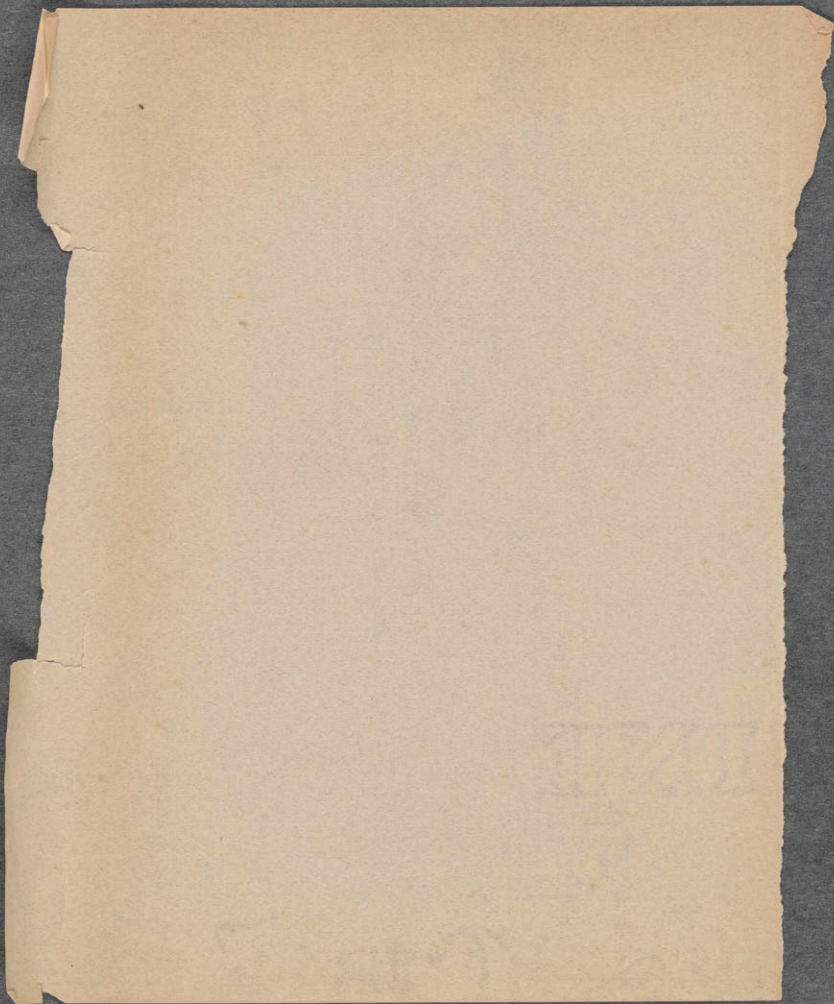
May 1928

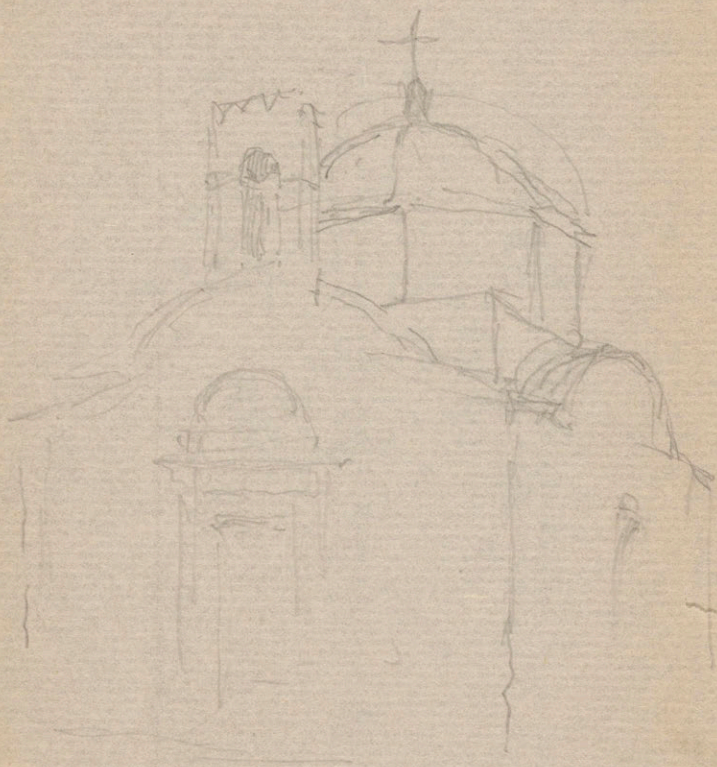




Rhodes

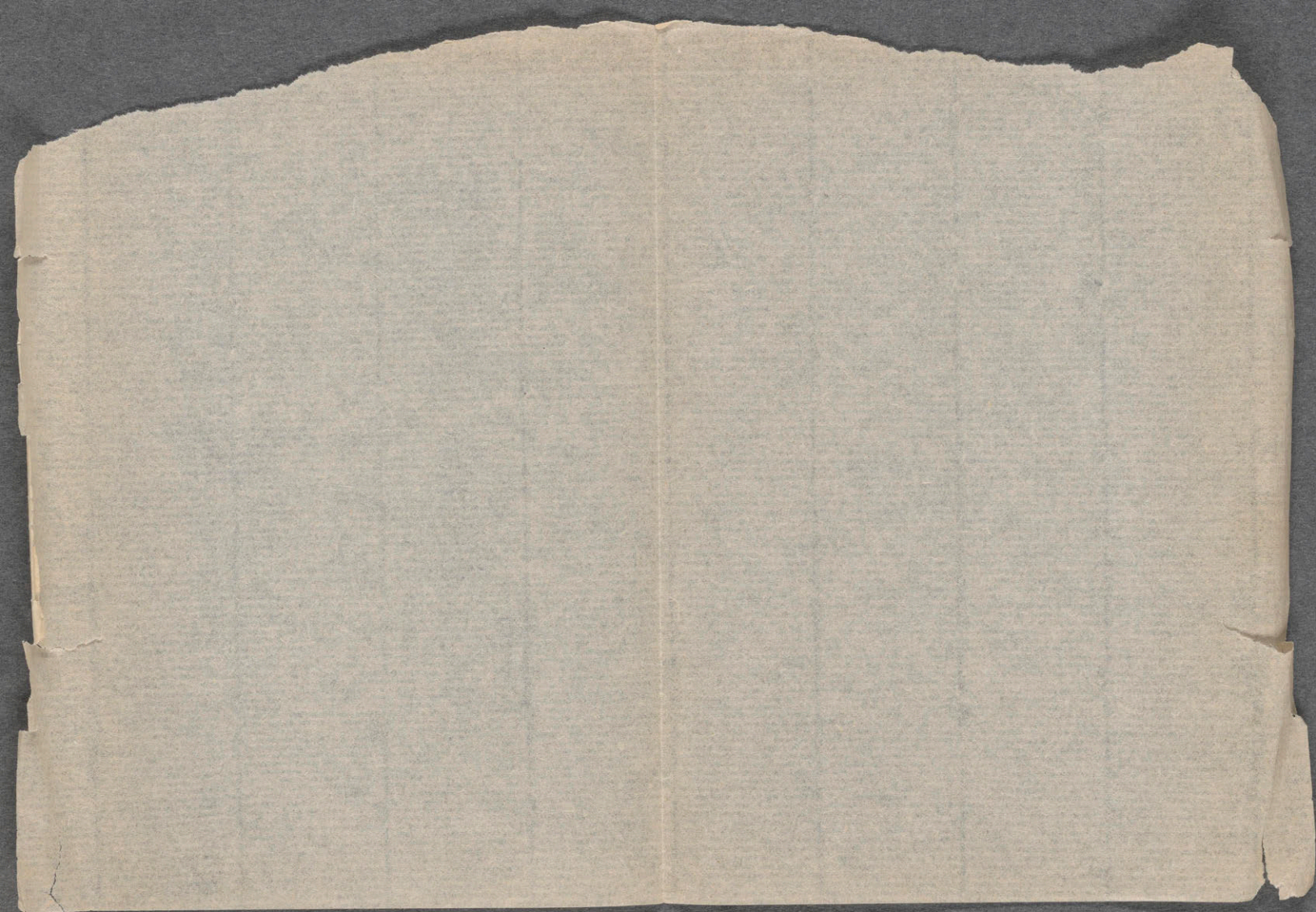
may, 1929

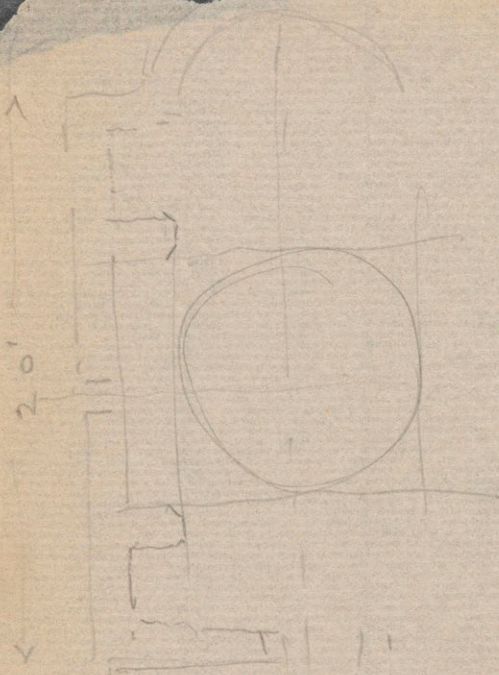




Palmas.

May, 1928.





Pat. mps

May, 1928.

