

2

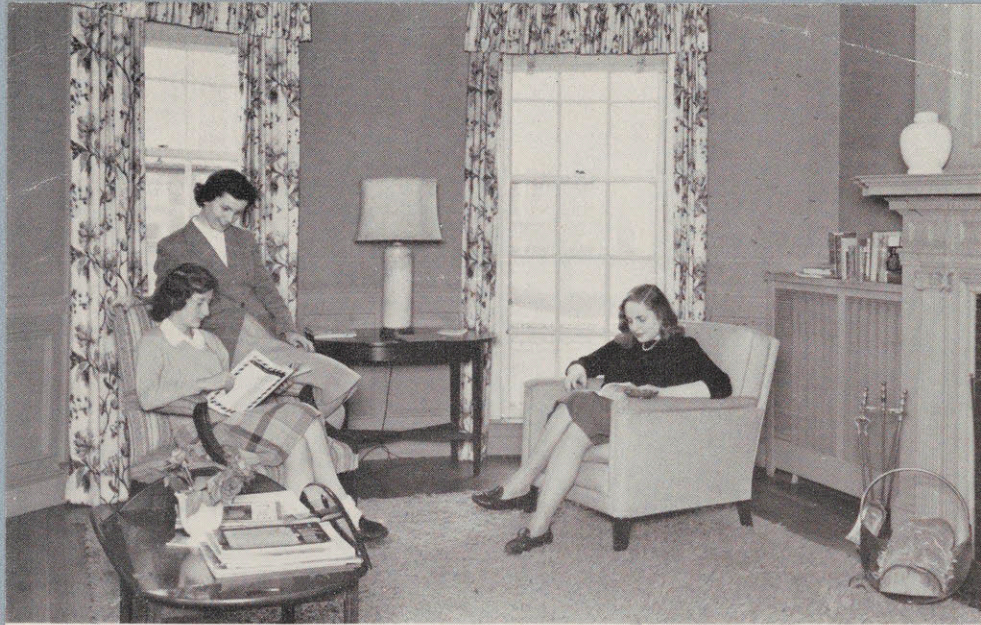
MIT Women's Dormitory  
Brochure, 1947





THE M. I. T. WOMEN'S DORMITORY  
120 BAY STATE ROAD, BOSTON





Living Room at the M. I. T. Women's Dormitory

M. I. T. WOMEN'S ASSOCIATION  
WOMEN'S DORMITORY  
FUND COMMITTEE

Miss Adelaide A. Toombs, *Chairman*  
Miss Lois Lilley Howe, *Honorary Chairman*  
Miss Elizabeth Coit  
Miss Marjorie Pierce  
Miss Dorothy Weeks  
Miss Gretchen Palmer  
Mrs. Frances Emery Wypler  
Mrs. Nathaniel McL. Sage, *Ex-officio*  
Miss Florence W. Stiles, *Ex-officio*

M. I. T. WOMEN'S DORMITORY  
ADVISORY COMMITTEE

Mrs. Murray P. Horwood, *Chairman*  
Mrs. Everett M. Baker  
Mrs. Nathaniel McL. Sage  
Mrs. Karl T. Compton, *Honorary  
Adviser to Women Students, Ex-officio*

The M. I. T. Women's Dormitory is two years old. The key to 120 Bay State Road, Boston, was presented by Mr. Ford, the Institute's Treasurer, to the M. I. T. Women's Association at the annual meeting in June, 1945, as a complete surprise. By November 5th, an active committee had altered, decorated, and furnished this attractive house for the incoming classes. This took some doing!

Fourteen students and a housemother, with the help of a part-time cook, successfully handled the venture. This year, room was made for 3 more students. Expenses are kept to a minimum through cooperative house-keeping. The Institute has been generous on the initial outlay. The house carries itself financially, but only "just".

Therefore, to keep the girls' expenses to a minimum and to provide for additional equipment, replacements, and possible expansion of facilities, a fund has been established known as the M. I. T. Women's Dormitory Fund. Expenditures would be authorized by the Institute's Executive Committee on the recommendation of the Women's Dormitory Advisory Committee. The objective sought is a fund of \$10,000, about \$1,000 of which is on hand to start the fund, largely through the gift of Matilda A. Fraser. The opportunity to contribute to the fund is now called to the attention of all former women students, only about 1,000 in number.

The Committee would be greatly pleased to enlist your active interest in the raising of the fund for such a long hoped for and needed improvement in student life.

M. I. T. Women's Association Women's Dormitory Fund Committee