

Annual Exhibition

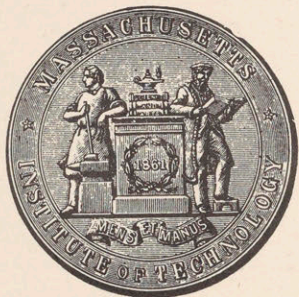
1891

107-M3 = M.I.T. - Exhibition. =

~~NA9~~
~~10~~
~~10~~
NA9
.m414

Archives





LIBRARY
OF THE
MASSACHUSETTS INSTITUTE
OF TECHNOLOGY

School of Architecture and Planning
Massachusetts Institute of Technology

LIBRARIES

1891 ✓

OCT 24 1938

Gift of Prof Gardner

Annual Exhibition
of the
Dept. of Architecture.



M
A
S
S.



1
8
9
1

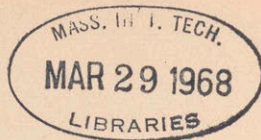


Mass. Inst. of Tech.
•••••
Boston.



✓

Archives



DEPARTMENT OF ARCHITECTURE.

FRANCIS W. CHANDLER, Professor of Architecture.
EUGENE LETANG, Associate Professor of Architecture.
ELEAZER B. HOMER, Assistant Professor of Architecture.
WALTER H. KILHAM, Instructor in Architecture.
CARRIE R. HUNT, Librarian.
ROSS TURNER, Instructor in Watercolor.
C. HOWARD WALKER, Instructor in Decoration.
DAVID A. GREGG, Instructor in Pen and Ink.
C. L. ADAMS, Instructor in Freehand Drawing.
S. H. WOODBRIDGE, Instructor in Heating and Ventilation.
ERNEST L. MAJOR, Instructor in Drawing from the Life.
CHARLES ELIOT NORTON, Lecturer on Fine Art.

JURY FOR THIRD AND FOURTH YEAR DESIGNS.

E. C. CABOT.	C. A. COOLIDGE.
R. S. PEABODY.	ARTHUR ROTCH.
A. W. LONGFELLOW.	W. D. AUSTIN.
C. H. BLACKALL.	A. G. EVERETT.
R. C. STURGIS.	C. A. CUMMINGS.

W. G. PRESTON.
(Of the Boston Society of Architects.)

EXHIBITION COMMITTEE, 1891.

Professor E. B. HOMER, Chairman.

F. IRVIN DAVIS, '92.	ROSS F. TUCKER, '92.
W. HARTLEY DENNETT, '92.	F. E. NEWMAN, '92.



Arch. Nov 27, 1956 Gift of Prof Gardner

CAT
1. A COLLE
2. AN EXEC
UNIT
3. A NATION
4. A METRO
5. A STATE
6. A NATION
7. UN PALA
8. A HOTEL
9. A MUSEU
10. A MONU
30-31 J. Mc
B. P.
32- J. A.
34 W. F.
35-36 A. W.
37-38 E. W.

CATALOGUE OF DRAWINGS.

* Drawings mentioned but not exhibited.

† Students not receiving degrees.

THESIS DRAWINGS, 1891.

1. A COLLEGE MEMORIAL BUILDING. By H. B. Clement.
2. AN EXECUTIVE MANSION FOR THE PRESIDENT OF THE UNITED STATES. By E. W. Donn, Jr.
3. A NATIONAL OPERA HOUSE. By W. H. Lawrence.
4. A METROPOLITAN POSTOFFICE. By W. Leeming.
5. A STATE CAPITOL. By J. A. Meyer.
6. A NATIONAL ART GALLERY. By Sol. H. Stix.
7. UN PALAIS DE JUSTICE. By Harry J. Carlson.†
8. A HOTEL. By Frederick N. Reed.†
9. A MUSEUM OF DECORATIVE ARTS. By J. McA. Vance.†
10. A MONUMENTAL RAILWAY TERMINUS. By Ambrose Walker.†

FOURTH YEAR DESIGN.

PROBLEM I. AN AMPHITHEATRE.

30-31	J. MCA. VANCE.	First mention.
	B. P. JENKS.*	1st Second mention.
32-	J. A. MEYER, JR.	2d Second mention.
34	W. H. LAWRENCE.	1st Third mention.
35-36	A. WALKER.	2d Third mention.
37-38	E. W. DONN.	3d Third mention.

Arch. Nov. 29, 1956 Gift of Prof. Gardner

FOURTH YEAR. I. Monthly Problem.

AN AMPHITHEATRE FOR THE STUDY OF NATURAL HISTORY.

This building will be isolated and erected in a principal part of a large city Zoölogical Garden. It is intended for the public study of the three main branches of Natural History, namely, Mineralogy, Botany, and Zoölogy.

Material to be used: light colored stone.

The plan will provide for:—

- (1) A Vestibule or large Portico.
- (2) An Amphitheatre, or Lecture Room, where about 700 students can be conveniently seated; the disposition of the seats will be such that every one can reach his place or go out without causing trouble to the audience. On the platform will be the Professor's chair, and a large table placed so that all objects set upon it may be seen by every one.
- (3) Near the Lecture Room will be arranged three large rooms in which would be exhibited minerals, plants, and animals; that is, the objects necessary to illustrate the different courses and lectures given in the Amphitheatre. To each one of these rooms will be added a small studio for the private use of the Professors in charge of making alternately those lectures; also, toilet-room and coathrooms for students. The largest dimension is not to exceed 130 feet.

Finished drawing required: Plan, elevation, and section.

October, 1890.

E. LÉTANG.

FOURTH YEAR. II. Sketch Problem.

AN OBSERVATORY TOWER.

The structure is to be erected at the culminating and converging point of several avenues running up a hill whose grounds are part of a large Park, its purposes being to make temperature observations and also as an embellishment to the Park.

An entrance vestibule to project out of main building. Said building to contain a staircase leading up to the top platform and to intermediate landing, with projecting balconies disposed at different heights of the tower.

The top platform to be covered and of sufficient area for observations. It can be made large by means of a projecting balustrade supported by a corbelled cornice.

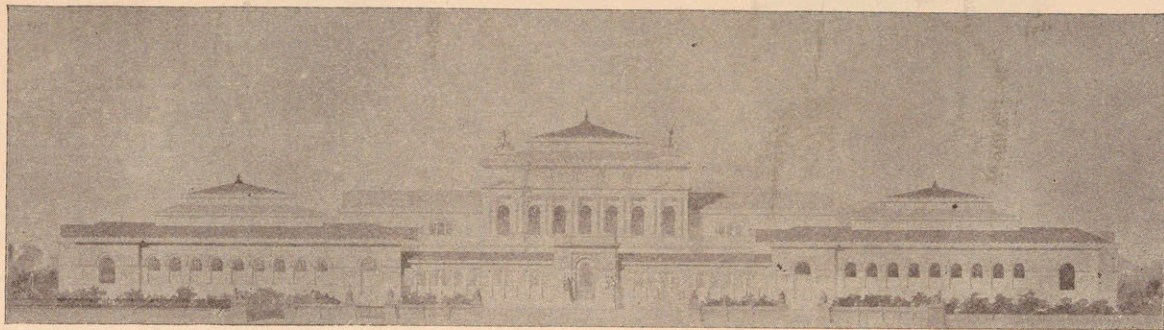
Height of building not to exceed 65 feet.

Materials: stone and brick.

Plan and elevation required.

October, 1890.

E. LÉTANG.



This Drawing. A Museum of Decorative Art. By J. McA. Vance.

NATURAL

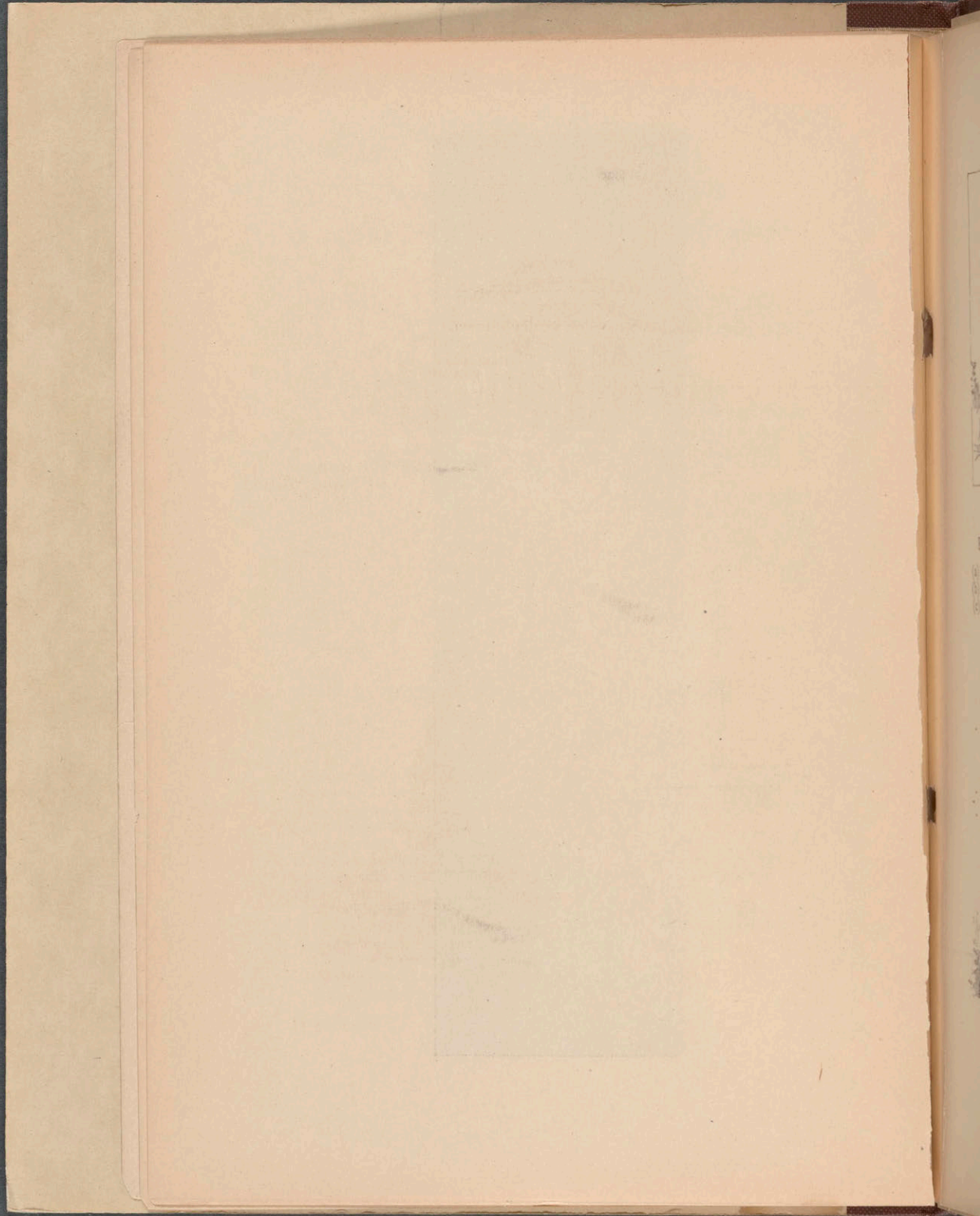
part of a
city of the
of Albany,

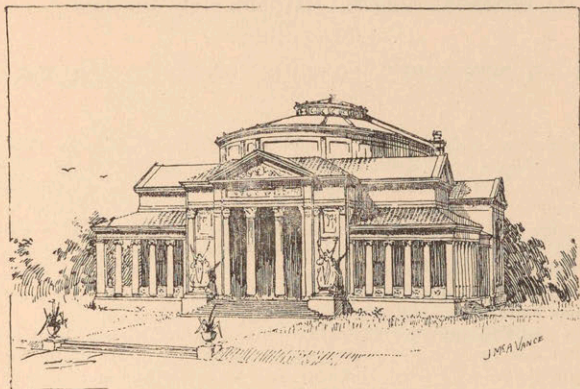
students
each that
de to the
ge table
in which
objects
Albany.
for the
by those
largest

PLANS.

point
large
as an
building
value
of the
class.
by a

ANC.

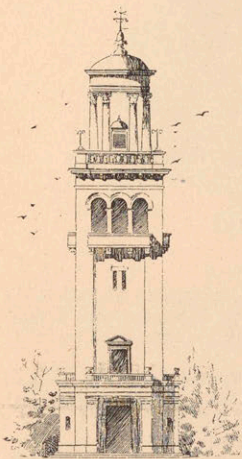




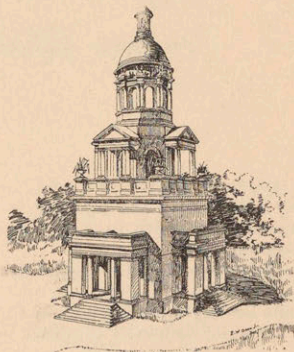
An Amphitheatre. By J. McA. Vance.

PROBLEM II. AN OBSERVATORY TOWER.

- | | | |
|-----|------------------|--------------------|
| (a) | J. A. MEYER, JR. | 1st Third mention. |
| (b) | J. McA. VANCE. | 2d Third mention. |
| (c) | A. WALKER. | 3d Third mention. |



J. A. Meyer, Jr.



J. McA. Vance.

FOURTH YEAR. III. Monthly Problem.

A BRIDGE WITH GALLERY OVER A STREET.

The object of such a structure would be, as exemplified in the Palace of Offices at Florence and also the Ducal Palace in Venice, to put in direct connection an Art Museum building with an additional wing supposed to be erected on the opposite side of a street of about forty feet in width. This bridge, built entirely of rich stone materials, will support a covered gallery accompanied by two lateral passages also covered but freely open to the light, being loggias or porticos with or without projecting balconies.

A central architectural motive bearing as decoration the city's coat-of-arms may be introduced in the composition.

Thick partition walls in the adjoining buildings and set at about twenty feet from axis to axis give ample resistance to the thrust of the bridge. The Gallery above the bridge is to be on a level with the second story and about twenty feet in height.

Finished drawings required: Front elevation with parts of adjoining buildings, one plan, one section, and details.

E. LÉTANG.

November, 1890.

FOURTH YEAR. IV. Sketch Problem.

A MUSIC PAVILION.

It is to be erected on a public square and large enough to accommodate fifty musicians. The building is to have a stone basement and a light superstructure with projecting roof, whether built of wood, iron, or even stone pillars.

The entrance for the musicians to be in the basement: said basement to contain toilet and coat room, room for music and musical instruments, and stairs leading up to upper floor.

Required sketches: Elevation and basement plan.

E. LÉTANG.

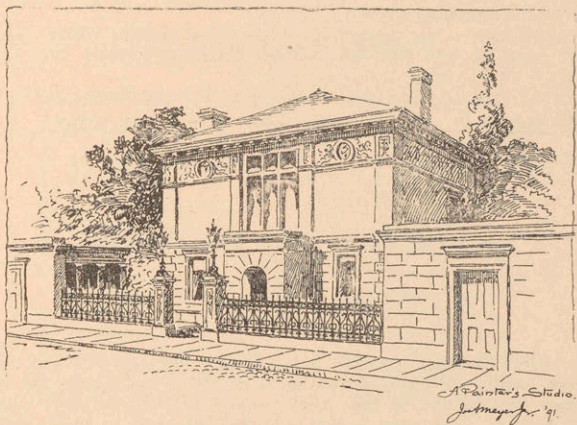
December, 1890.

PROBLEM III. A BRIDGE AND GALLERY OVER
A STREET.

39-40-41	H. J. CARLSON.	1st First mention.
42-43	E. W. DONN.	2d First mention.
	B. P. JENKS.*	1st Second mention.
44-45	J. MCA. VANCE.	2d Second mention.
46-47	F. N. REED.	1st Third mention.
48-49	J. A. MEYER, JR.	2d Third mention.

PROBLEM IV. A MUSIC PAVILION.

50	J. MCA. VANCE.	1st Second mention.
51	J. A. MEYER, JR.	1st Third mention.
52	S. H. STIX.	2d Third mention.



An Artist's House. By J. A. Meyer, Jr.

PROBLEM V. AN ARTIST'S HOUSE.

53	J. A. MEYER, JR.	First mention.
54	J. MCA. VANCE.	First mention.
	B. P. JENKS.*	1st Second mention.
55	E. W. DONN.	2d Second mention.
56	H. B. CLEMENT.	1st Third mention.
57	F. N. REED.	2d Third mention.

FOURTH YEAR. V. Monthly Problem.

HOUSE FOR AN ARTIST.

The proposed house is intended for an artist, supposed to be a bachelor. The plot of ground in which it is to be built is square in shape and of about 5,000 square feet area. Three sides of this lot are limited by party walls, the fourth fronting north on a street. The house is to be erected facing that street and some distance from it. The entrance and a low wall supporting an iron grille will enclose the property on that side.

The building to have two stories and cellar: the first story to contain a vestibule, the artist's living apartments, and the stairs leading to the studio above, which is to be lighted by a single large opening, making the principal feature of the house. To the studio will be added a couple of small rooms.

The architectural character must be appropriate to such a building, and the materials to be used in the construction are left to the taste and judgment of the competitors.

The party walls to be treated in a decorative manner which, together with the small garden, must give to the design a pleasant and artistic appearance. Dimensions not given.

Required: Principal elevation, section, plan of second story, and general plan with garden.

E. LÉTANG.

December, 1890.

FOURTH YEAR. VI. Sketch Problem.

PLAN FOR A PUBLIC BATH.

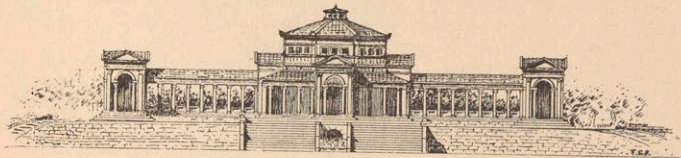
The ancient civilized nations, especially the Romans, perfectly understood the healthy advantages derived from the use of temperate baths. The many descriptions, as also what remains of their beautiful thermal palaces, tend to show what importance they attached to such establishments. These considerations will lead to the present program, although conceived according to the wants and habits of the present generations.

The edifice is supposed to be erected in a populous quarter of a large city, and for a small fee people of both sexes are to be supplied with a temperate or hot bath, and the necessary linen.

(1) The plan will have two distinct divisions, one for men, the other for women, both divisions planned alike, and each containing fifty cells with washtubs, disposed around on both sides of a broad lobby which might be used also as a waiting-room and winter-garden. This portico, corridor, or whatever it may be called, would give access to courtyards planted with trees.

PROBLEM VI. PLAN OF BATHS.

58	J. MCA. VANCE.	1st First mention.
59	J. A. MEYER, JR.	2d First mention.
60	F. N. REED.	1st Second mention.
61	S. H. STIX.	1st Third mention.
62	H. B. CLEMENT.	2d Third mention.



A Pavilion. By F. E. Perkins.

THIRD YEAR DESIGN.

PROBLEM I. A FOUNTAIN AND EXEDRA.

63	G. H. INGRAHAM.	1st First mention.
64	F. P. SMITH.	2d First mention.
65	H. C. WATERMAN.	3d First mention.
66	F. E. PERKINS.	1st Second mention.
	H. FORSYTH.*	2d Second mention.
	L. PLACK.*	3d Second mention.
67	C. E. FOX.	1st Third mention.
	B. F. JONES.*	2d Third mention.
68	E. P. WHITMAN.	3d Third mention.
	E. T. ROOT.*	4th Third mention.
	F. T. SCHNEIDER.*	5th Third mention.
69	F. E. NEWMAN.	6th Third mention.

PROBLEM II. A PAVILION OVER A MINERAL SPRING.

70-71	F. E. PERKINS.	1st First mention.
72-73	F. L. FRANCIS.	2d First mention.
74-75	L. W. PULSIFER.	2d Third mention.
76-77	T. H. SKINNER.	3d Second mention.
78	R. R. TAYLOR.	3d Third mention.
79-80	F. P. SMITH.	4th Third mention.
	E. T. ROOT.*	1st Second mention.
	G. B. PIKE.*	1st Third mention.
	H. C. ROACH.*	2d Third mention.

(2) The centre of the building will be occupied by the office of the employes in charge of collecting the entrance fees, common to the *two* distinct entrances of the establishment. This central part would also include a lodging for the principal agent, and close by, to facilitate his superintendence, would be managed the boilers, stores for coal and fuel, laundry, ironing, linen closets, linen-mending, rooms for waiters (male and female). To be planned in two stories.

(3) The edifice will also include a *Piscene* (*frigidarium*) for the use of children of both sexes who, under the supervision of their parents, would come there to take their first swimming lessons. Two rooms of suitable dimensions would serve as common coatrooms.

(4) Besides, divided into two distinct parts (men and women), will be found cells fitted for medical baths, but as their bad smell will be far from agreeable, it will be proper, although in connection with the establishment, to plan them in a somewhat remote part of the edifice. An employe in charge of these baths would have a room approximate to both quarters.

Also, a room in which would be stored books, which for a small contribution would be given to bathers.

Two *buvettes* and sheds for drying linen, etc. (may be in two stories).

The edifice to be isolated, main entrance to be on a square, the other three sides on streets. Given surface, 46,000 feet.

Required: Ground plan.

E. LÉTANG.

THIRD YEAR. I. Monthly Problem.

AN ORNAMENTAL FOUNTAIN IN A PUBLIC PARK.

This monument is supposed to stand at the end of a large avenue, its purpose being to contribute to the adornment of a public park and at the same time to be used as a drinking-fountain.

The central feature will be a niche framed by two isolated columns of the Corinthian order, supporting a pediment.

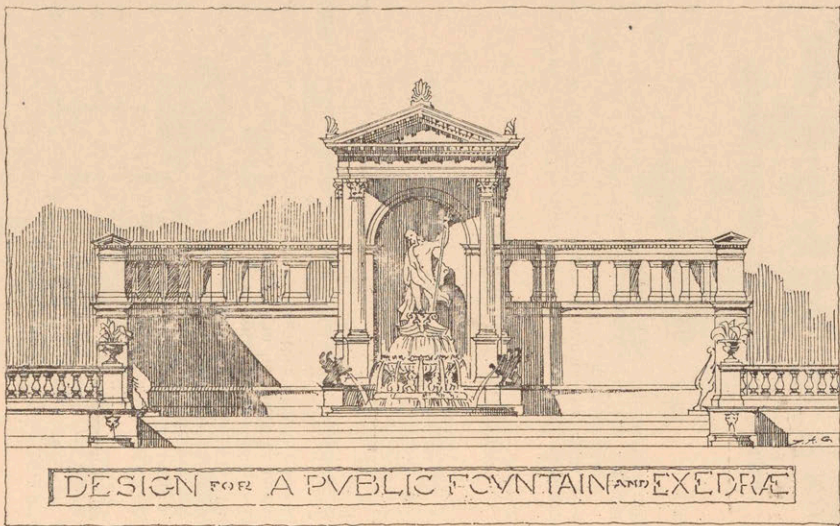
These columns will be set at no less than six feet from axis to axis. The niche may receive an allegorical motive of statuary, and below the flowing of water, *vasque*, basins, vases, etc., would complete its architectural decoration.

To this central feature will be added on both sides an *exedra*, circular or elliptical in plan, being itself a high wall, decorated and provided with benches, where people can sit and indulge in conversation; the whole structure to be built of light stone and not to extend over forty feet in elevation.

Required: Plan and elevation rendered at will.

E. LÉTANG.

October, 1890.



Monthly Problem. By G. H. Ingraham.

(11)

THIRD YEAR. II. Monthly Problem.

A PAVILION OVER A MINERAL SPRING.

This small building can be considered as belonging to a large thermal establishment situated in the South, and is supposed to stand on a mountainous site, its purpose being to supply those guests making use of mineral water with promenade, rest, and comfort. The approach would be effected by stairs and even sloping driveways.

The water will spring from under a *pavilion* or *covered hall*, whose disposition and decoration are to be consistent with its purpose, and of a sufficient area to accommodate thirty people, with entrance and two small rooms for the service. Porticos, either isolated or connected with the pavilion, and supplied with seats or *exedrae* will be added. These porticos may be understood as being on a level with the pavilion or otherwise as may best suit the design, and the spring can be made apparent outside in the shape of fountains and waterfalls, together with the steps and balustrades, thus completing the general composition.

Finished drawings required: Plan, section, and elevation.

November, 1890.

E. LÉTANG.

THIRD YEAR. III. Sketch Problem.

A WROUGHT-IRON REGISTER.

The proposed register is supposed to fit an opening eighteen inches by eighteen inches cut in the stylobate of one of the walls of a large and well-decorated vestibule, and located in a conspicuous place.

Sketches can be confined to the designing of the register only, and attention is especially called to the fact that it must have the character of wrought iron, not cast iron.

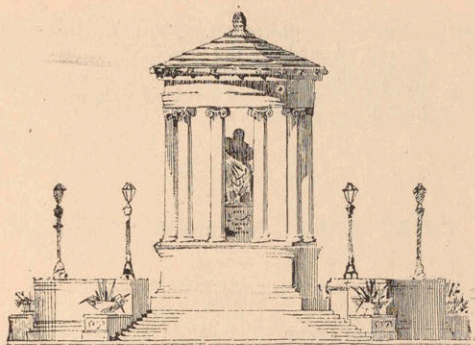
December, 1890.

E. LÉTANG.

THIRD YEAR. IV. Monthly Problem.

(FROM AMERICAN ARCHITECT, No. 777.)

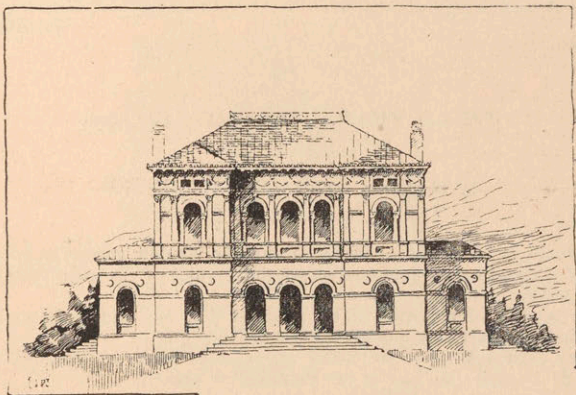
An heroic statue of Zeus, standing nine feet high, has been secured by an American citizen from one of the excavations now going on among the ruins of Greece, and presented to one of our large cities. The municipal government, fully appreciating the value of the gift, proposes erecting



A Drinking Fountain. By G. H. Ingraham.

PROBLEM III. A WROUGHT-IRON REGISTER.

81	W. H. DENNETT. ;	1st First mention.
82	G. H. ROPES.	2d Second mention.
83	L. W. PULSIFER. --- 7	1st Third mention.
	E. T. ROOT.* --- 1	1st Second mention.
	F. T. SCHNEIDER.*	2d Third mention.



A Cafe. By F. E. Perkins.

a loggia for its reception and protection. This pavilion is to be located upon a plot of ground formed by the conjunction of two converging avenues with a boulevard.

The structure is to be of marble, and classic in treatment.

Required: Elevation and general plan.

E. LÉTANG.

January, 1891.

THIRD YEAR. V. Monthly Problem.

A CAFÉ.

This building, which is supposed to stand in a park or pleasure ground, will contain:—

1st. The Café itself, with proper kitchens, serving-rooms, supper-rooms, and a lodging for the proprietor.

2d. A little theatre for singing and dancing, with the stage under cover, but the orchestra and audience to be out-of-doors in a garden provided with seats.

Porticos or covered walks enclose this garden; the main building will have two stories and possibly an attic if found necessary, but on the garden side and looking toward the little theatre will be managed an open loggia in part of the second story.

The greatest dimensions of the plan are not to exceed one hundred feet.

Required: Preliminary sketch and finished drawings of elevation, plan, and section showing little theatre.

E. LÉTANG.

February, 1891.

THIRD YEAR. VI. Sketch Problem.

A STONE DORMER WINDOW.

Students are required to design a dormer window supposed to stand against a high-pitched roof and above the cornice of the main features of some public building.

The opening of this window to be about four feet wide. Its architectural features must be monumental and ornamental.

Many examples are to be found among the Italian palaces and especially the French *châteaux* of the Renaissance period.

Sketch of elevation required.

E. LÉTANG.

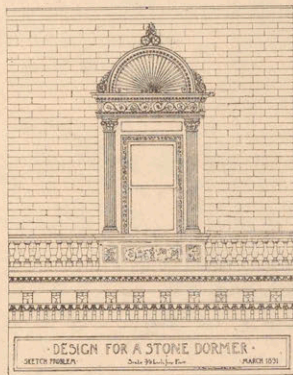
March, 1891.

PROBLEM IV. A LOGGIA FOR A STATUE OF ZEUS.

84-85	G. H. INGRAHAM.	1st First mention.
86-87	E. P. WHITMAN.	2d First mention.
88	L. W. PULSIFER.	3d First mention.
90-91	A. D. KOCH.	1st Second mention.
92-93	G. H. ROPES.	2d Second mention.
94-95	F. E. PERKINS.	3d Second mention.
96-97	F. I. DAVIS.	1st Third mention.
98-99	J. F. VINING.	2d Third mention.
100-101	A. C. LOTZ.	3d Third mention.
	E. T. ROOT.*	4th Third mention.

PROBLEM V. A THEATRE AND CAFÉ.

102	F. E. PERKINS.	1st First mention.
103	C. E. FOX.	2d First mention.
104	G. H. INGRAHAM.	3d First mention.
105	T. H. SKINNER.	1st Second mention.
106	S. S. HASKELL.	2d Second mention.
107	F. L. FRANCIS.	3d Second mention.
108	J. B. BLAIR.	} Third mention.
109	F. E. NEWMAN.	
110	G. H. ROPES.	} Third mention.
111	L. W. PULSIFER.	
	J. F. SCHWEITZER.*	
	B. L. FENNER.*	



A Dormer Window. By H. S. Haskell.

(R.P.) Dep^t of Architecture (III year Reg
II year Spec)

Programme: A Triumphant Arch.

The object of this monument supposed to be erected by means of national funds would be to commemorate the great battle fought for the Independence of North America.

Its Architectural character must be noble and dignified. Strong & sternal.

It will stand between a public promenade and a vast esplanade depending of a military school. Military exercises are supposed to take place on this esplanade.

The monument can be considered as forming its principal entrance, it will have a simple ~~and~~ opening and may be decorated like the Roman Triumphant arches with statues bas-reliefs, trophies inscriptions &c.

The top will support a Quadriga or Sixtyge

The opening is to be 25 ft wide, the other dimensions are left to suit the fancy of the designer.

Requid: A preliminary sketch (plan and elev) on a scale of $\frac{1}{8}$ inch = 1 ft. to be handed in Tuesday, March 10th at 5 P.M.

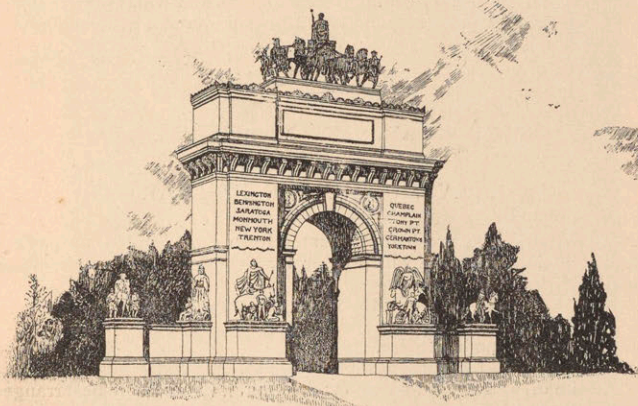
Finished drawings (One elevation - $\frac{1}{4}$ inch = 1 ft.
Plan and perspective view - - - -

Principal details - Scale - 1 inch = 1 ft.
To be handed in March 31st at 5 P.M.

C. Letang

PROBLEM VI. A DORMER.

112	S. S. HASKELL.	1st First mention.
113	G. H. INGRAHAM.	2d First mention.
114	E. R. WAIT.	1st Second mention.
115	F. E. PERKINS.	2d Second mention.
	J. F. VINING.*	
115a	L. W. PULSIFER.	} Third mention.
115b	F. YOERG.	
115c	F. L. FRANCIS.	



A Triumphal Arch. By T. H. Skinner.

PROBLEM VII. A TRIUMPHAL ARCH.

116	T. H. SKINNER.	1st First mention.
117	G. H. INGRAHAM.	2d First mention.
118	F. E. NEWMAN.	3d First mention.
119-120	A. D. KOCH.	1st Second mention.
121	J. F. VINING.	2d Second mention.
122-123	R. R. TAYLOR.	3d Second mention.
	H. FORSYTH.*	
	B. L. FENNER.*	
124	S. S. HASKELL.	} Third mention.
125	F. I. DAVIS.	
	G. B. PIKE.*	

THIRD YEAR. VIII. Sketch Problem.

A MEMORIAL DRINKING-FOUNTAIN.

A young architect being on a summer tour meets with an accident near a small country town. Through kindness and good care he finally recovers, which enables him to resume his journey. As a token of gratitude and to commemorate this fact, he offers the inhabitants a drinking-fountain to be erected on the principal square of the town.

The small structure, being the gift and work of an architect, ought to have a certain particular character; a bust, tablet, or something might be introduced in the composition so as to recall the cause of its standing there. Water must run freely and be conveniently distributed for people and animals. Simplicity, too, is required.

Designs to be made on half-imperial and drawn at will, even freehand and in perspective if preferred, and might be considered a good suggestion for a watercolor.

April, 1891.

E. LÉTANG.

THIRD YEAR. IX. Monthly Problem.

COUNTRY MUSEUM OF FINE ARTS.

The university of a prosperous country town has decided to erect a museum building. Its plan will provide for these principal requirements, namely:—

1. A suite of large rooms for the display of casts.
2. Another suite for drawings and paintings.
3. A library of moderate size.
4. Smaller rooms for prints and photographs.
5. A suite of well-lighted rooms for drawing. (These may be arranged in the basement.)
6. A lecture hall, to seat about 400 persons.
7. Lavatories, closets, etc., in the basement.

The size of the building in plan to be almost fifty feet by one hundred and fifty feet, exclusive of the lecture hall and surrounding grounds.

The rooms for casts and paintings ought to be lighted from the north side or from the top. The rooms for prints and photographs may be lighted from any side, but no cross-light is allowed; therefore no room should have windows on more than one side.

Windows to be large and high.

A spacious vestibule is desirable. It can be made the central feature of the edifice and be also utilized for the display of casts.

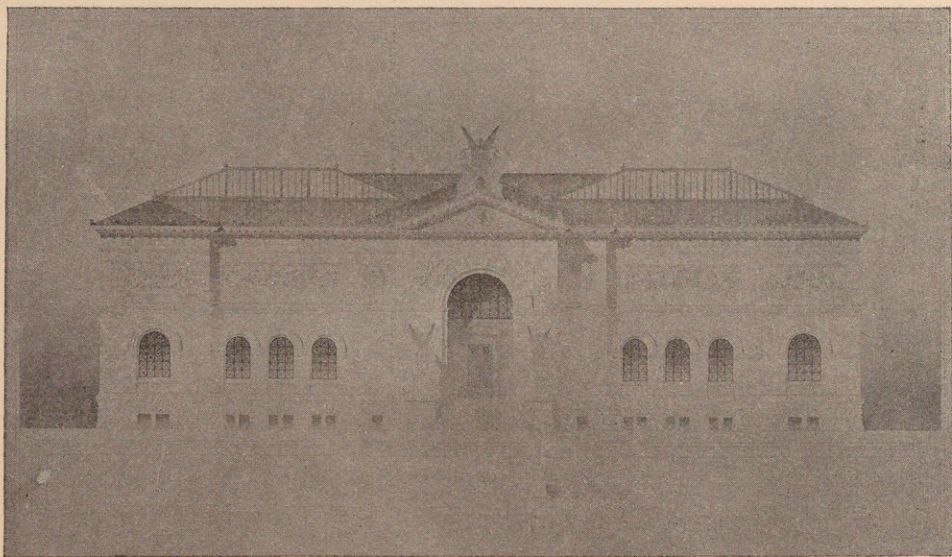
The building to be arranged in two stories, and stairs must not be forgotten.

Required: Previous sketch. Plan and elevation on a scale of 1-32 of an inch to one foot, to be handed in April 10, at 2 P.M.

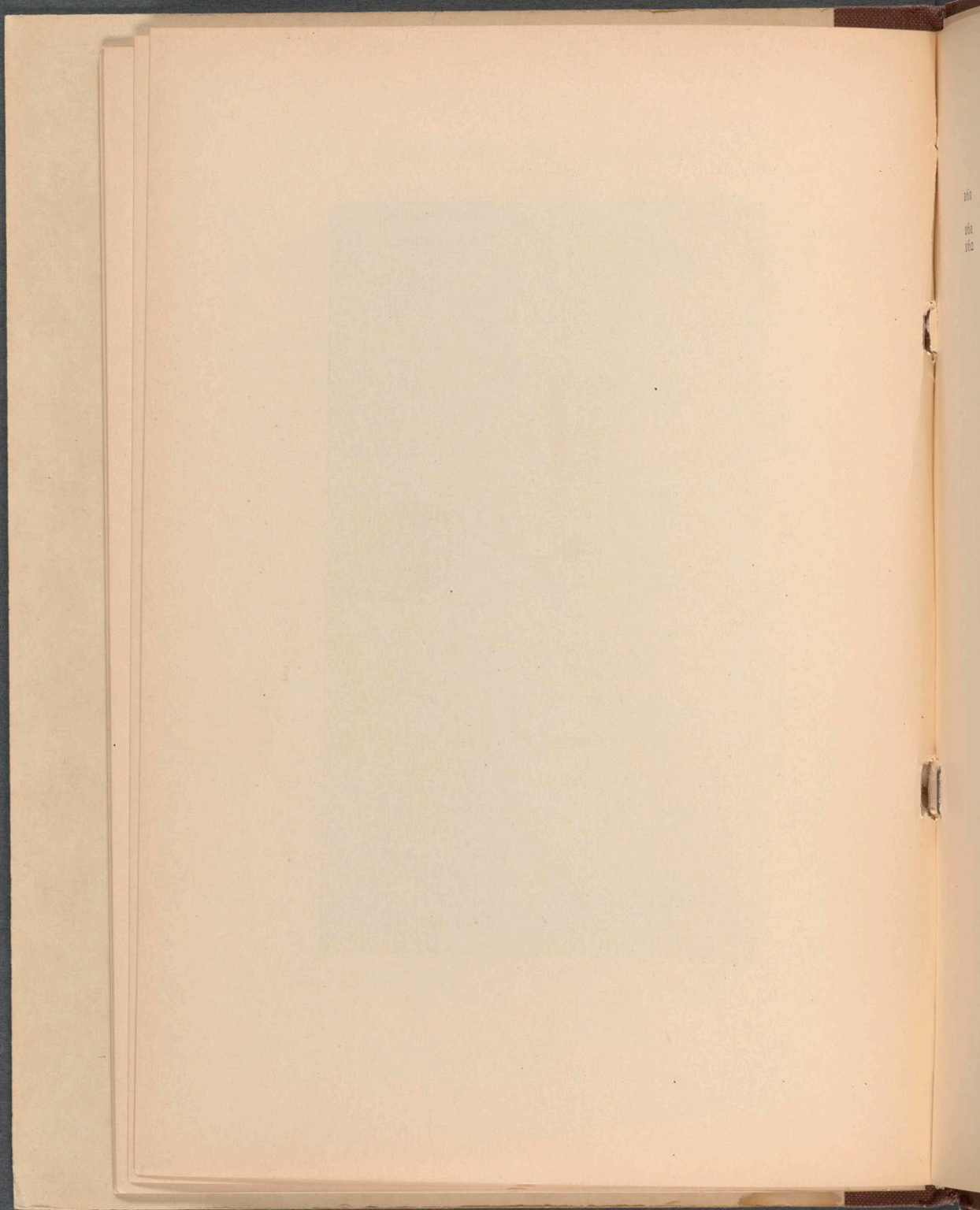
Finished drawings: Two plans and elevation.

April, 1891.

E. LÉTANG.

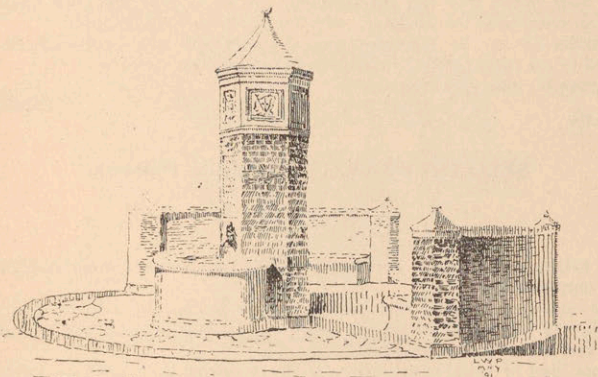


Monthly Problem. A Museum of Fine Arts. By Frank E. Newman.



PROBLEM VIII. A MEMORIAL FOUNTAIN.

161	L. W. PULSIFER.	First mention.
	G. B. PIKE.*	Second mention.
161	F. I. DAVIS.	} Third mention.
162	J. F. VINING.	



A Memorial Fountain. By L. W. Pulsifer.

PROBLEM IX. A COUNTRY ART MUSEUM.

126-127	F. E. NEWMAN.	1st First mention.
128-129	A. C. LÖTZ.	2d First mention.
130-131	E. R. WAIT.	3d First mention.
132-133	S. S. HASKELL.	1st Second mention.
134-135	G. H. INGRAHAM.	2d Second mention.
136-137	J. B. BLAIR.	3d Second mention.
138-139	L. FELAND.	4th Second mention.
140-141	F. E. PERKINS.	} Third mention.
142-143	C. E. FOX.	
144-145	G. B. PIKE.	
146-147	H. V. D. SHAW.	
148-149	G. H. ROPES.	
150-151	F. P. SMITH.	
152-153	A. WOLTERSDFORF.	

THIRD YEAR. X. Sketch Problem.

A GARDENER'S COTTAGE.

This little one-story stone house is supposed to be built by a gentleman for his gardener in the neighborhood of his garden. It will contain on ground floor: Veranda on one side of the house, vestibule, stairs, and two rooms, namely, sitting-room and kitchen supplied with closets. The front door opens into the sitting-room, the back door into the kitchen. Also, an open shed for washing; with toolroom and water-closet.

Upstairs are to be managed one chamber and two bedrooms, to be located in the high-pitched roof and lighted by large dormers.

Required: One elevation and two plans.

E. LÉTANG.

May, 1891.

SECOND YEAR. I. Monthly Problem.

AN ENTRANCE.

An entrance to a public building leads directly from an open court to a large entrance hall.

The doorway is placed in a two-foot thick stonewall, is to be five feet wide in the clear, and of proper height in proportion, and will be raised three feet above the ground level.

Some kind of suitable protection to the doorway, as a portico, porch, or canopy, is to be designed, to keep rain and snow from the immediate entrance.

Care must be taken to arrange steps, columns, etc., so as to give the most direct and unobstructed exit from the building.

Finished drawings required: Plan, elevation, and section.

E. B. HOMER.

February, 1891.

SECOND YEAR. II. Sketch Problem.

A SMALL ENTRANCE TO A PARK.

A wall separating a public park from a side street is to be cut so as to join the street with the principal promenade of the park by a walk eight feet wide.

It is proposed to erect two stone posts to mark the entrance, and to form good stops for the ends of the wall.

The wall will be two feet six inches high above grade, with moldings suitable for use with the Corinthian Order at top and base.

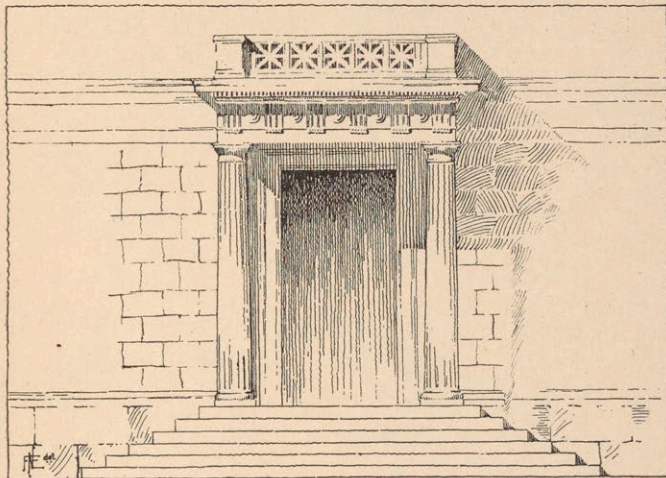
Required: Pencil sketch.

E. B. HOMER.

February, 1891.

PROBLEM X. A GARDENER'S COTTAGE.

154	S. S. HASKELL.	First mention.
155	F. I. DAVIS.	1st Second mention.
156	F. E. NEWMAN.	2d Second mention.
157	F. P. SMITH.	} Third mention.
158	R. F. TUCKER.	



An Entrance. By S. F. Rosenheim.

SECOND YEAR DESIGN.

PROBLEM I. AN ENTRANCE.

163	S. F. ROSENHEIM.	1st First mention.
164	F. W. HIGHT.	2d First mention.
165	E. LORCH.	1st Second mention.
166	W. R. HILL.	2d Second mention.
167	H. V. D. SHAW.	} Third mention.
168	J. S. WHITE.	
169	F. F. LOW.	
170	M. H. HUNT.	

SECOND YEAR. III. Monthly Problem.

AN INTERIOR IN AN ART MUSEUM.

A small room in an Art Museum, lies between and connects two large exhibition rooms, and has at each end a niche containing a large classic figure or group.

The problem is to design the openings, niches, treatment of wall surfaces, ceiling, etc., so as to form a simple but dignified room that will contrast with the larger and more elaborate halls on either side.

Direct light can enter only through the ceiling, although the open doorways will help to light the lower portions of the room.

As the statues in this apartment will all be copied from the antique, only classic forms and moldings can be used.

Finished drawings required of two elevations, and plans of floor and ceiling.

E. B. HOMER.

March, 1891.

SECOND YEAR. IV. Sketch Problem.

A PARK SEAT.

To design a seat or exedra on the edge of a park path, located on the side of a hill from which there is a good view.

The seat is to be in the upper side of the walk, and is to extend into the bank in any desired form, the earth being held back by a stonewall at least four feet high. The width of the opening between ends of seat is to be at least fifteen feet.

All to be simple in design with delicate moldings, the ends of walls and seat being strongly marked.

Required: Pencil sketch.

E. B. HOMER.

April, 1891.

SECOND YEAR. V. Monthly Problem.

PEDESTAL FOR A STATUE.

It is proposed to erect a pedestal in a small city square to carry a life-size statue of the Emperor Augustus, presented to the city by a foreign minister.

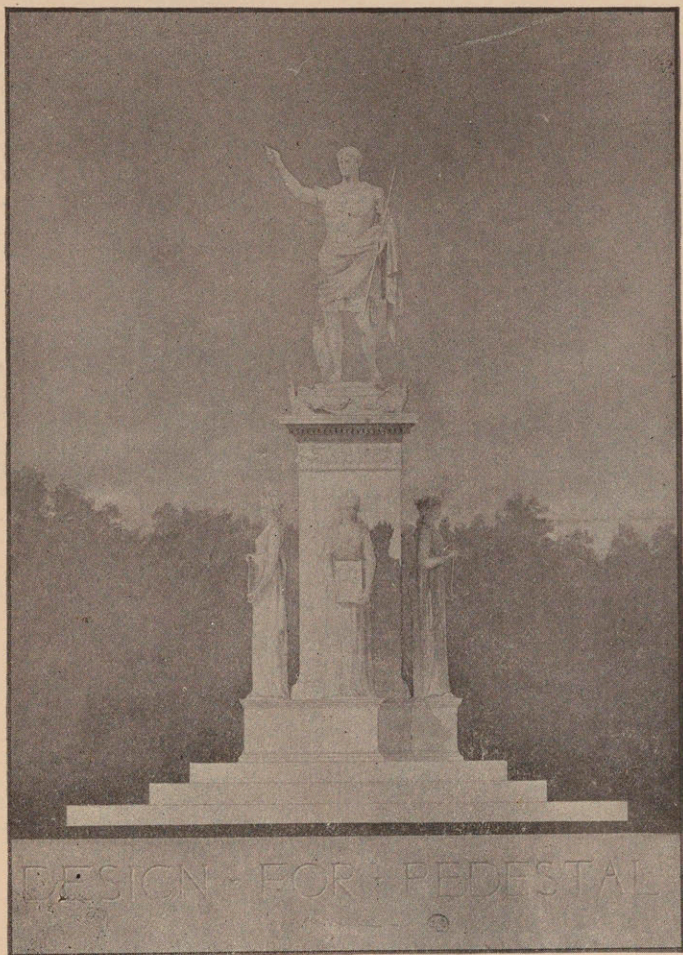
The lot of land on which the pedestal is to be placed will be triangular in form, one side sixty feet and the other two seventy feet each. The statue is to be raised at least ten feet above the ground.

Columns are not to be used in this problem.

Elevation, plan, and perspective view required.

E. B. HOMER.

April, 1891.

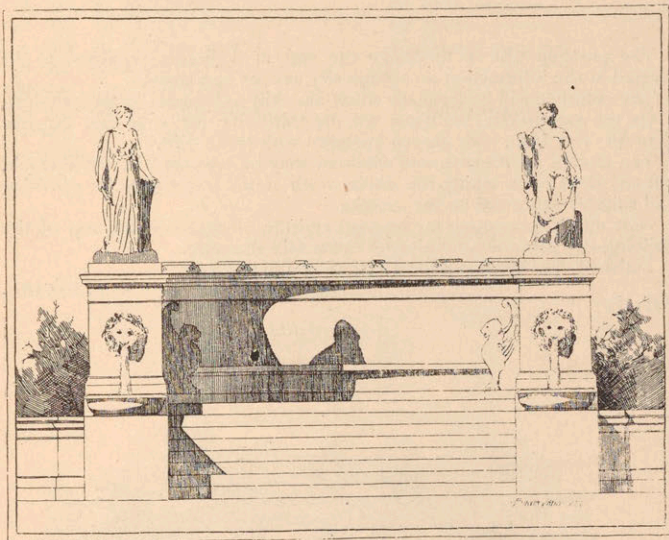


Monthly Problem. A Pedestal. By G. B. Perkins.

171
172
173

PROBLEM II. A PARK GATEWAY.

171	F. F. LOW.	1st First mention.
172	F. W. HIGHT.	2d First mention.
173	G. W. ANDREWS.	1st Second mention.



A Park Seat. By E. Lorch.

PROBLEM III. A SMALL ROOM IN AN ART MUSEUM.

174	F. E. PERKINS.	1st First mention.
175	F. W. HIGHT.	2d First mention.
176	H. V. D. SHAW.	1st Second mention.
177	M. H. HUNT.	2d Second mention.
178	R. C. TUTTLE.	} Third mention.
179	H. H. THORNDIKE.	
180	C. E. GARSTANG.	

PROBLEM IV. AN EXEDRA.

181	E. LORCH.	1st First mention.
182	W. R. HILL.	2d First mention.
183	F. W. HIGHT.	1st Second mention.
184	G. W. ANDREWS.	} Third mention.
185	C. L. WASHBURN.	
186	H. R. SARGENT.	

SECOND YEAR. VI. Monthly Problem.

A STUDY OF WINDOWS.

The problem will be to design the end of a house, supposed to be located at the intersection of a large city avenue and street.

The entrance will be from the street and will not appear in the problem.

On the avenue side, the house will be thirty-five feet wide and not less than fifty feet high, with garden enclosed with stone wall.

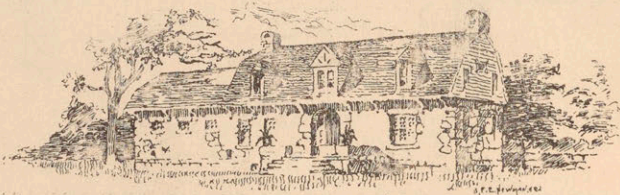
The stories, apartments, and windows may be arranged in any manner, but one large room taking the whole width of the house must be provided and suitably expressed on the exterior.

Only one large cornice can be used and that must be at the top of the building and serve as a cornice for the whole structure.

Finished drawing required of elevation and section.

May, 1891.

E. B. HOMER.



A Gardener's Cottage. By S. S. Haskell.

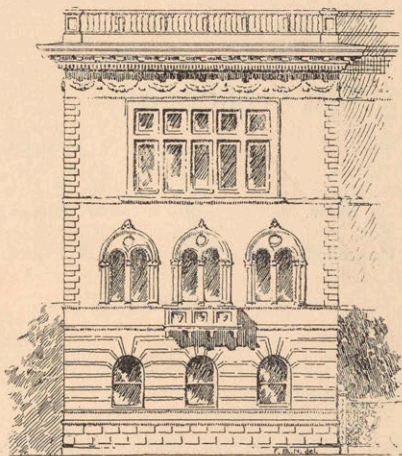
BLUE-PRINTS.

These blue-prints were made from tracings of architectural details taken from various books in the library of the department. The tracings were made by the students in addition to regular work, and the blue-prints are sold at cost. The work has been under the direction of Ross F. Tucker, '92.

Much of the work that cannot be traced has been photographed by the department, and is exhibited under the head of Department Work.

PROBLEM V. A PEDESTAL FOR A STATUE OF
AUGUSTUS.

187-188	G. B. PERKINS.	1st First mention.
189-191	F. W. HIGHT.	2d First mention.
192-193	R. E. MESERVE.	1st Second mention.
194-195	S. F. ROSENHEIM.	2d Second mention.
196-197	F. P. SIMONDS.	} Third mention.
198-199	J. C. DUFORT.	
200-201	H. H. THORNDIKE.	
202-203	W. R. HILL.	
204-204a	F. E. COX.	



A Study of Windows. By H. V. D. Shaw.

PROBLEM VI. A STUDY OF WINDOWS.

205	H. V. D. SHAW.	1st First mention.
206	P. O. CLARKE.	2d First mention.
207	R. C. TUTTLE.	1st Second mention.
208	J. C. DUFORT.	2d Second mention.
209	E. LORCH.	} Third mention.
210	W. R. HILL.	
211	A. M. BURTT.	

ORDERS.

212. Pl.	1.	F. P. Simonds.	221. Pl.	10.	R. E. Meserve.
213. "	2.	R. E. Meserve.	222. "	11.	J. C. Dufort.
214. "	3.	" "	223. "	12.	G. W. Andrews.
215. "	4.	" "	224. "	13.	" "
216. "	5.	H. V. D. Shaw.	225. "	14.	A. Walker.
217. "	6.	E. Lorch.	226. "	"	" "
218. "	7.	C. L. Washburn.	227. "	"	" "
219. "	8.	E. Lorch.	228. "	"	" "
220. "	9.	H. V. D. Shaw.			

WATERCOLORS.

229-248.	G. B. Perkins.	276-277.	J. A. Meyer, Jr.
249-260.	E. W. Donn.	278-279.	E. R. Wait.
261-267.	J. McA. Vance.	280.	W. H. Dennett.
268-271.	H. V. D. Shaw.	281.	W. Leeming.
272-273.	C. E. Fox.	282.	F. E. Newman.
274-275.	S. S. Haskell.	283.	F. N. Reed.

290-291. PEN AND INK DRAWING.

G. W. Andrews.	H. H. Thorndike.
A. D. Koch.	M. B. Biscoe.
E. Lorch.	W. H. Dennett.
F. E. Newman.	W. H. Graves.
F. I. Davis.	A. C. Lotz.
G. H. Ingraham.	G. H. Ropes.
R. E. Meserve.	J. B. Blair.
F. P. Smith.	F. W. Fitts.
E. R. Wait.	C. E. Fox.
J. McA. Vance.	C. F. Garlichs.
S. F. Rosenheim.	A. S. Gottlieb.
H. V. D. Shaw.	A. Walker.

CHARCOAL DRAWING.

2d Year Regulars and 1st Year Partials.

G. B. Perkins.	E. I. Leeds.
W. R. Hill.	A. C. Lotz.
R. E. Meserve.	E. M. Parker.
M. B. Biscece.	G. H. Ropes.
A. M. Burt.	S. F. Rosenheim.
P. O. Clarke.	C. W. Sawyer.
L. W. Pulsifer.	F. P. Simonds.
Rogers.	J. G. Bartlett.
H. V. D. Shaw.	J. C. Dufort.
H. H. Thorndike.	W. E. Evans.
W. H. Graves.	F. W. Fitts.
E. Lorch.	G. W. Frank, Jr.
C. L. Washburn.	M. H. Hunt.
G. W. Andrews.	L. Levi.
W. S. Dutton.	D. N. McKenzie.
C. F. Garlich.	H. R. Sargent.
C. E. Garstang.	A. F. Woltersdorf.
F. W. Hight.	

PENCIL DRAWINGS.

1st Year Partials.

G. B. Perkins.	F. P. Simonds.
H. V. D. Shaw.	A. C. Turner.
F. W. Hight.	A. C. Lotz.
F. F. Low.	E. W. Pulsifer.
H. H. Thorndike.	J. S. White.

2d Year Partials and 3d Year Regulars.

G. H. Ingraham.	B. L. Francis.
A. D. Koch.	E. T. Root.
W. H. Dennett.	E. P. Whitman.
E. W. Donn.	L. Feland.
E. R. Wait.	C. E. Fox.
J. B. Blair.	J. W. Hall.
F. H. Briggs.	M. A. Peters.
W. S. Dutton.	T. H. Skinner.
F. P. Smith.	R. F. Tucker.
G. B. Pike.	L. B. Vining.
B. L. Fenner.	H. C. Waterman.

DEPARTMENT WORK.

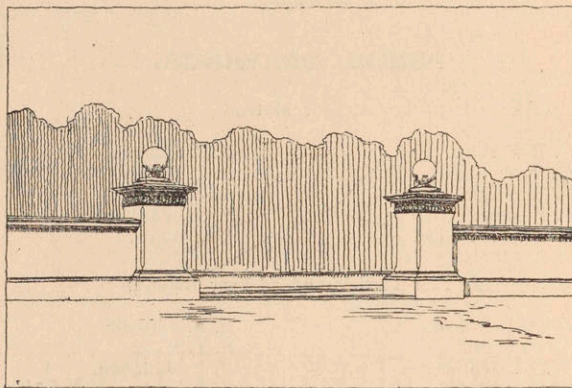
Drawings made for the Department, for courses in Architectural History, History of Construction, and Graphical Statics during 1890-91.

STEREOTOMY.

Problems in Stereotomy by J. B. Blair, W. H. Dennett, W. S. Dutton, B. L. Fenner, C. E. Fox, F. L. Francis, J. W. Hall, S. S. Haskell, G. H. Ingraham, A. D. Koch, F. E. Perkins, L. W. Pulsifer, H. V. D. Shaw, J. F. Vining, E. R. Wait, H. C. Waterman, E. P. Whitman, F. Yoerg.

GRAPHICAL STATICS.

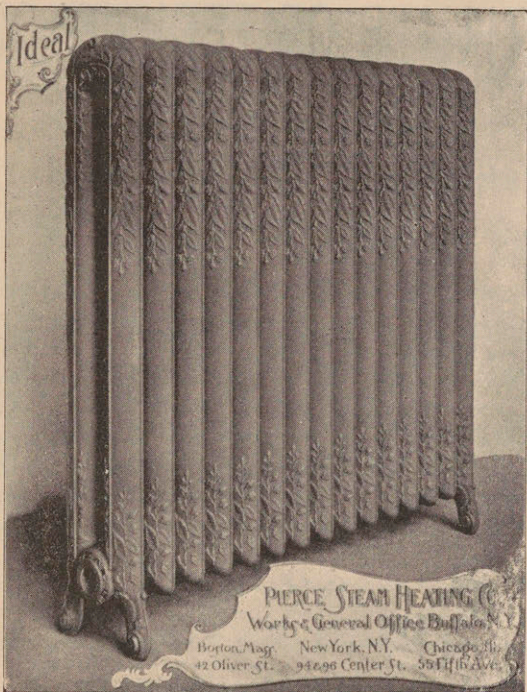
Problems by G. W. Andrews, W. E. Evans, S. S. Haskell, A. C. Lotz, G. H. Ropes, H. V. D. Shaw, J. S. White.



A Park Gateway. By F. F. Low.

Steam and Water Heating Apparatus.

R
A
D
I
A
T
O
R
S



B
O
I
L
E
R
S

PIERCE STEAM HEATING CO.

New York.

Buffalo.

Chicago.

42 Oliver St., Boston.

MASSACHUSETTS INSTITUTE OF TECHNOLOGY.

FRANCIS A. WALKER, President.

C**O****U****R****S****E****S** in **Civil, Mechanical, Chemical, Mining, Electrical,** and **Sanitary Engineering;** in **Chemistry, Architecture, Physics, Biology,** and **Geology.**

To be admitted to the School, the applicant must have attained the age of seventeen years, and must pass examinations in arithmetic, algebra, plane geometry, history of the United States (or ancient history), English composition, French (or German), and geography. A definite division of these examinations between two successive years is allowed. In general, a good High School course, including one year's study of French (or German), is a sufficient preparation.

Examinations will be held on June 25 and 26, in Boston, New York, Philadelphia, Chicago, Washington, San Francisco, St. Paul, Pittsburgh, St. Louis, Cincinnati, Toronto, and Montreal; and on September 22 and 23, in Boston only.

The regular courses are of four years' duration, and lead to the degree of Bachelor of Science. Shorter special courses are offered to those properly prepared, and advanced degrees of Master or Doctor of Science and of Doctor of Philosophy are given for study subsequent to graduation.

The tuition fee, including everything except breakage in the chemical laboratory, is \$200 a year. In addition, \$25 or \$30 per year are required for books and drawing materials.

For Catalogues and information address

J. B. HENCK, JR., *Secretary*

O. A. JENKINS & CO.



TENNIS and CLUB CAPS
TO ORDER.

STRAW HATS
Of Latest Patterns.

407 WASHINGTON STREET.



BAY STATE Guitars, Mandolins, Banjos.

These have received the highest honors in competition — Six Silver, Three Bronze, One Gold Medal, and Three Diplomas.

Musical Instruments of every description, including HAYNES EXCELSIOR and WM. B. TILTON GUITARS, Band and Orchestral Instruments, Strings, etc. Send for Catalogue.

J. C. HAYNES & CO.

33 Court St. and 453 to 463 Washington St., Boston.

WE ESPECIALLY RECOMMEND TO YOU

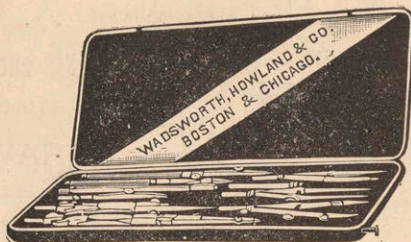
THE COLLEGE FOUNTAIN PEN.

It is the Latest and Best. Flooding and usual objections entirely overcome. Satisfaction guaranteed.

PRICES: \$2.00, \$2.50, \$3.00.

DISCOUNT TO STUDENTS.

A. D. MACLACHLAN, 214 Clarendon St., Boston.



WADSWORTH, HOWLAND & CO.

82 and 84 Washington Street, Boston,

IMPORTERS AND MANUFACTURERS OF

Draughtsmen's Supplies

AND

Architects' and Engineers' Stationery,

Tracing and Blue Print Cloths and Papers, T

Squares, Triangles, Curves, Drawing

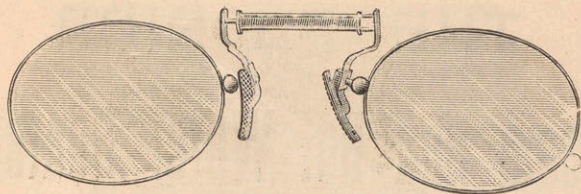
Tables and Boards, etc.

SPECIAL SETS OF INSTRUMENTS FOR M. I. T.

L. & C. Hardmuth's Celebrated Lead Pencils.

Special Rates to Students of M. I. T.

Catalogue mailed on application.



THE THREE BAR SPRING EYEGLASS FRAME

For Cylindrical and Compound Lenses.

Boston Agent for the Three Bar Spring Eyeglass Frames; also, the Eureka or Fox Patent Eyeglass Frames, and the Patent Astigmatic Improvement for Opera Glasses, Field Glasses, and Telescopes.

ESTABLISHED 1870.

ANDREW J. LLOYD, Optician,

No. 323 Washington St. Branch Store, 284 Boylston St.

BOSTON, MASS.

THE HABERSTROH DECORATIVE PROCESS

(Patented in the United States, Canada, Great Britain, and France).

Producing the most refined and artistic effects
on CEILINGS and WALLS.

Designs and Colorings always specially made to harmonize
with the architecture and conditions of the building or room.

Sketches and estimates furnished.

L. HABERSTROH & SON,

9 Park Street, corner Beacon,

BOSTON, MASS.

THE FLORIDA Steam and Hot Water Heaters.

DESIGNED FOR POWER AND HEATING

RESIDENCES,

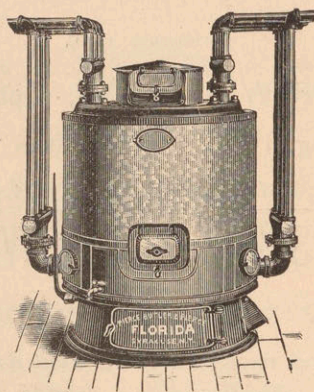
HOTELS,

STORES,

SCHOOLS,

CHURCHES,

CLUB HOUSES,



THEATRES,

AP'T HOUSES,

MANUFACTORIES

BUSINESS BL'KS,

and

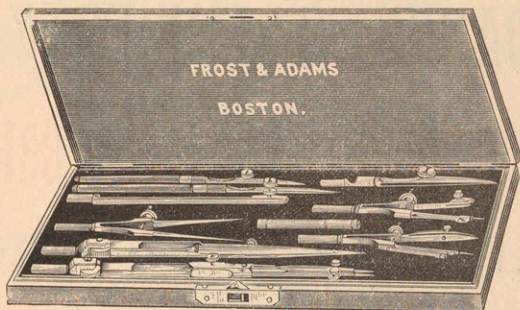
PUBLIC B'LD'GS.

ESTIMATES FURNISHED.

Send for Descriptive Circulars and Information.

SMITH & WINCHESTER,

19 to 31 Wendell St., Boston, Mass.



DRAFTING INSTRUMENTS OF ALL KINDS.

Drawing Paper, Tracing Paper, Tracing Cloth, Triangles, Curves, T Squares.

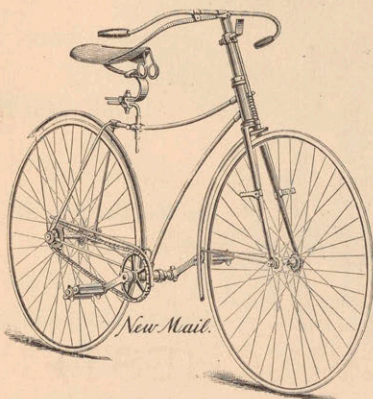
ARTISTS' MATERIALS of EVERY DESCRIPTION,

Oil Colors, Water Colors, Fine Brushes, Sketch Blocks, Canvas, Easels, etc.

FROST & ADAMS, 37 CORNHILL, BOSTON.

Send for Illustrated Catalogue. Special Terms to Students.

NEW MAIL,



**NEW 1891 GRADE,
\$100.**

Cushion Tires and Tangent Spokes.
THE SENSATION OF THE YEAR!
Handsomest and Best Medium-
Priced Safety.

ALSO,

\$135 Grade.

ALSO,

Ladies' Pattern - \$100
New Mail Boys' - 35

Sole Agents for the Little Giant
Boys' Wheel, \$35.

WM. READ & SONS, 107 Washington Street, Boston.

DANIEL G. FINNERTY,
PLUMBER
AND
Sanitary Engineer.

DRAINAGE AND VENTILATION.

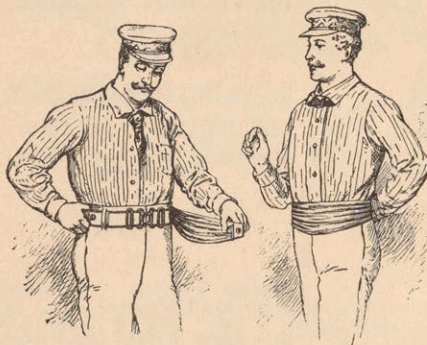
Nos. 478 Boylston St. and 25 Charles St.

BOSTON.

Telephone Connection.

VACATION AND OUTING CLOTHING

Of Every Description.



We make the popular

QUINCY EXPERT
TENNIS RACKET

and the

SPECIAL

COLLEGE CATCHING MIT,

And deal generally in

ATHLETIC GOODS.

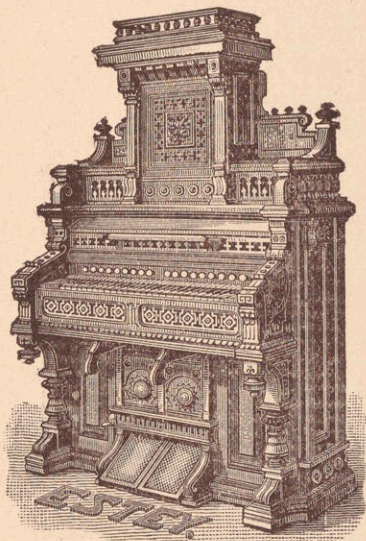
Kodak and Hawkeye Cameras,

Developing, Printing,
and Refilling.

DAME, STODDARD & KENDALL,

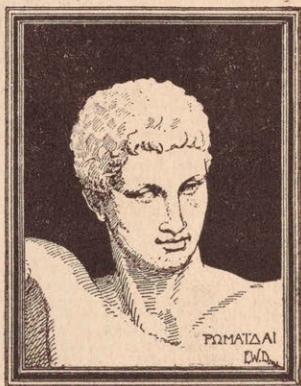
374 Washington Street, Boston.

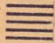
ESTEV ©



© ORGANS,

159 Tremont Street.



Gaylord 
PAMPHLET BINDER
 Syracuse, N. Y.
Stockton, Calif.

