

want to dedicate as given early in ab pass. 12/24/58
N^o 4131
Nov. 1, 1958
12/16/58

Place Chicago, Illinois,

Building Hyde Park Baptist Church. *5600 Woodlawn* Date of Completion October 15, 1959.

Persons Interested Mrs. Price Price: \$1600 (\$80 per foot).

Correspondence with Mr. William S. Gray, The University of Chicago, Department of Education, Chicago 37, Illinois. *22 1/2 = \$360.00*

Minister Denomination Baptist.

Architect

Vents

Position in Church vestibule window, south wall. (Vestibule to entrance at S.E. corner of the church.)

Height from floor Protection Glass Groove Rabbet Metal Stone Wood

Exposure South. Footage 20 feet.

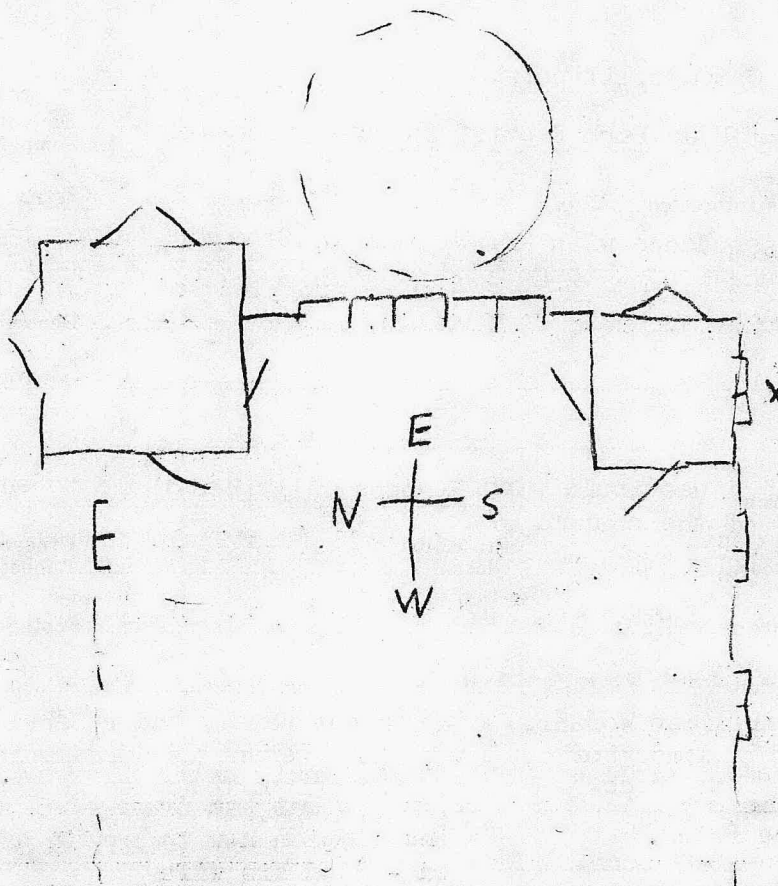
Inscription. (~~Not yet received~~)

(Left panel, under Worship). (Right panel, under Service).
"In loving memory of ~~Ita~~ Maurice Price." (At present use Ornamental Design, but prepare the inscription now to go ~~in~~ after Mrs. Price passes on - ^{And his wife} Elizabeth M. Price. (This is to be left with her lawyer.) (See letter from Mr. Gray, Dec. 1958).)

Design wanted soon. Staging Blueprints
Templates Asked Wrska for these.

General Information Service and Worship - an allegorical figure of Service holding a pitcher, ~~of water~~; and of Worship in the attitude of Prayer, holding the Cross, with Biblical verses - for Service - "By love serve one another" (Galations 5:13); and Worship, - "Let us worship and bow down" (Psalm 95:6).

Note: in relation to the figure of Service: As this is a Baptist Church, be very careful if Water is suggested anywhere that it is not related to Baptism.)



IMPORTANT NOTE: WE ARE TO REVERSE THE FIGURES, SO THAT WORSHIP WILL BE ON THE LEFT SIDE. THE FIGURES ARE TO FACE EACH OTHER, AS AS PRESENT.

As planned, it is devoted to allegorical figures of Service and Worship. Service holds a pitcher of refreshing water, with the significant text, -"By love serve one another" (Galatians 5:13); Worship holds the Cross, with the text, -"Let us worship and bow down" (Psalm 95:6).

Growing and flowering vine forms imply the Tree of Life, while the golden architectural canopy above the heads suggest the promise of mansions in Heaven.

In the circle above is the Heavenly Crown, - reward of earthly Service and Worship.

Flames of divine zeal enrich the smaller tracery members.

A space is provided at the base for a memorial inscription.