

Also interested, Mr. D.F. Gould, The Robert Dollar Co., Robert Dollar Building, San Francisco 4, California.

Place San Rafael, California.

No 4369

Dedicate Mar 1, 1962

Building First Presbyterian Church, 1510 5th St. Tel: GL 6-6760. Date of Completion November 1, 1961.

Mrs. R. Stanley Dollar, Jr.

Persons Interested In charge: Joseph C. Hickingbotham, Price: \$12,000. (\$63.16) Shreve and Company, Post and Grant Streets, San Francisco.

Profit of 6/10 % of \$194.89

The Reverend Wesley C. Baker, and The Reverend Herrick Minister J. Lane. (The Rev. Baker, 1111 E. Street, Denomination Presbyterian Tel. GL 6-4667).

Architect

Vents

Position in Church Window opposite chancel.

Height from floor 47 inches. Protection Glass. Groove Rabbet. Metal Stone Wood.

Exposure East Footage 190 feet.

(To be a memorial to the late R. Stanley Dollar.)

Inscription

Design wanted soon. Staging

Templates Wrote Cummings for these. Blueprints

General Information See slides of the interior and exterior of the church, and of the Cummings Windows in place.

Mr. Hickingbotham and Mrs. Dollar like Grace Cathedral. Are not too pleased with Cummings windows. They want the window simpler and not as involved as the Cummings window. Should be legible. Perhaps the Transfiguration with three figures, and Apostles below. Perhaps some other aspect of Christ.

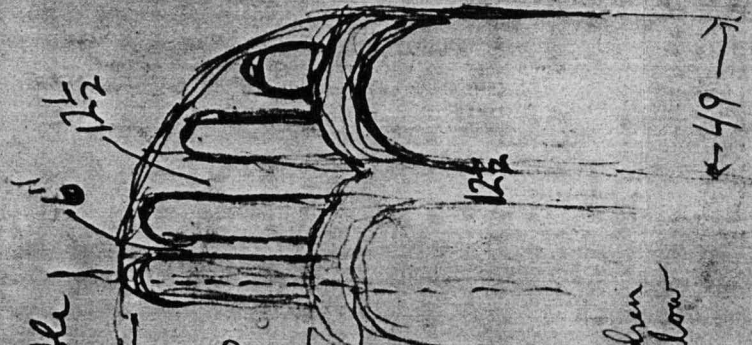
One of Cummings windows looks like an Ascension, but is the Sermon on the Mount. The other is Blessing Children; but there are sheep grouped below. They are principally full figure medallions in elaborate borders.

(Incidentally, they do not like the Hyde Park, Cincinnati, background.)

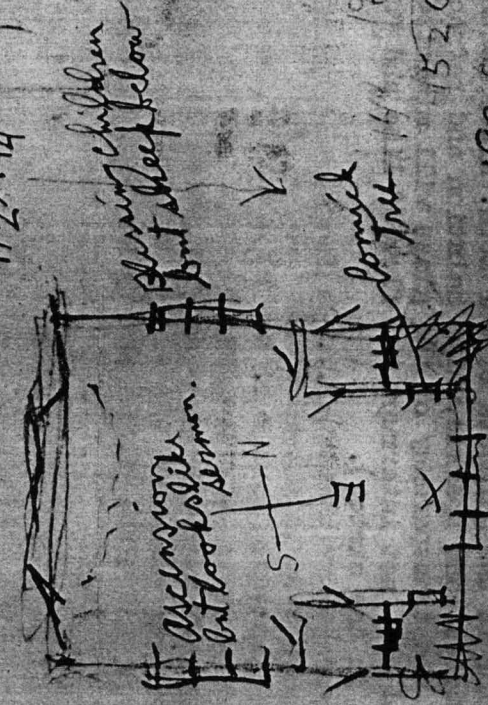
Make a design of the Transfiguration; and a separate sketch of the Good Shepherd.

See booklets about the previous windows sent by the donors. Preserve these carefully. Svendsen has these, and also the three slides of the Cummings Windows; that is, 2 of the windows, and one of the exterior of the church.

wants wd 300 lbs & wt as
 involved as Cummings - legible
 Perhaps Transfiguration with
 3 figures & abstr. 1
 Perhaps some other aspect of
 of Christ. Send photos suggestion
 Decided when Mrs. Walker
 returns Sept. but
 get set meanwhile.



12 1/2"
 11 1/2" x 14 1/4"



8600E
 #8 Colfax
 FL 5 1613

47.41
 15200 didn't like
 Hyde Park
 Curran
 43
 3
 129
 12
 36
 177

190
 170 15
 17600 4
 #12,000 sight
 15000 like 132
 Cummings

Donor writes:

"...As to the substitution of a triangle with the name "Jehovah" for the "Hand of God", there is some question in our minds as to its suitability in that this Old Testament name in itself connotes the "Trinity" as distinct from "God the Father". If we are correct in this interpretation, could you more appropriately use the "Imperial Crown" as the symbol for "God the Father"?

"We also have some question as to the desirability of the "Phoenix" as a substitute for the ~~three~~ tabernacles since, although it is symbolic of the "Resurrection", it would not appear to have any direct connection with the "Transfiguration". Perhaps a modification of the drawings of the three tabernacles might obviate the criticism that Mrs. Dollar expressed. As the tabernacles, as we understand it, ~~were~~ tents could they not be made to look more round rather than suggestive of the Japanese Torii Gates. If this is not feasible, then perhaps we will have to try to find some other symbol which would be appropriate.

"In order to avoid unnecessary work in redoing the entire design with each detail modification, would it not be more useful to submit small tissue paper modifications which we could place on the finished design of the complete window. If this suggestion has merit, you might include separate detail paintings of the suggestions referred to above when you return the finished drawing for our consideration..."

Members of the Angelic choir, - kneeling Angels of praise and prayer with trumpet and censer, attend Our Lord at either side.

Manuscript

The central panels of the tracery are enriched with symbols of the Trinity, - the Lamb with the cruciform banner of victory, the hand of God from the cloud, and the descending Dove of the Holy Spirit. Outer ones bear the scroll of the Old Testament, the book of the New Testament, and the Alpha and Omega, - the beginning and the end. Although some of these

symbols appear in the other windows, it seems highly appropriate to represent them here in somewhat different form. However, there are many other symbols that could well be represented.

The predominantly blue field is enriched with growing vine forms outlining and supporting the medallions. The grapevine motif of the borders suggest the unity and fruitfulness of the church and Christian family, through the significant words of Our Lord, - "I am the vine, ye are in".

...the faces and figures of Elijah, James and John would appear to be somewhat feminine...should be made to look more masculine. Peter should be made to look more traditional with whiskers and with tuft of hair above forehead" (We have strengthened the faces and figures of the saint and they are to be thoroughly, and carefully studied in the full size drawings and in the glass. Saint Peter's traditional aspect will also be preserved. "...as the tabernacles were tents... look more round rather than... of the Japanese Torii Gates

Further Criticisms: "...The faces and figures of Elijah, James and John would appear to be somewhat feminine...should be made to look more masculine. Peter should be made to look more traditional with whiskers and with tuft of hair above forehead" (We have strengthened the faces and figures of the saint and they are to be thoroughly, and carefully studied in the full size drawings and in the glass. Saint Peter's traditional aspect will also be preserved.

"...as the tabernacles were tents... look more round rather than... of the Japanese Torii Gates

See (3) Suggestion

We have restudied and refined the design for your window with your suggestions before us, and are returning it to you herewith.

Of course it is still an impression of color and light, and the detail of line and form is to be developed in the full size drawings and the actual glass.

We like your idea for the cross as the symbol of God the Father, and we have added the scepter.

The scroll and book are better balanced, and the border is completed at the bottom. Although roughly indicated, these borders will, of course, be uniform throughout the window.

We have modified the variation of color in the garments of Our Lord. Minor contrasts will add interest and sparkle, while halation and refraction of light in the transparency of the glass will minimize their appearance and will not interrupt the flow of line and form as it may seem to in the sketch.

We have strengthened the faces and figures of the saints and, here again, they will be thoroughly and carefully studied in the full size drawings and the glass. Saint Peter's traditional aspect will also be preserved.

The border is more clearly defined in ruby, in contrast to the blue of the field.

~~We are indicating three possibilities for the symbol beneath Our Lord. One is a modification of the first drawing of the tabernacle with clearer indication of the tent shape. Another, the peacock, ancient symbol of eternal life and immortality. We think the suggestion of radiant transformation than it spreads its feathers is most appropriate. The third represents the three crosses suggested by the Old Testament star with its implication of Christ the Light of the World with the Old Testament Figures. We are eager to know your preference.~~

We are anticipating the pleasure of developing a lovely and significant memorial to be the crowning glory of your distinguished Church.

* Mr. Hickingbotham likes the symbol of the tabernacles but feels that they should be a little smaller and less conspicuous than shown on the sketch submitted. "With a view to illustrating this criticism, we have taken the liberty of having my ecclesiastical silverware designer incorporate this suggested modification on the drawing..."

IMPORTANT: WE ARE TO SEND ~~GOOD SIZE PHOTOGRAPHS~~ OF THE FULL SIZE DRAWINGS BEFORE PROCEEDING WITH THE FABRICATION OF THE WINDOW.