

N<sup>o</sup> 3945

Place Presque Isle, Maine,

Building Saint John's Episcopal Church.

Date of Completion Nov. 1, 1957.

Persons Interested Senior Warden is Clyde P. Johnston,  
23 Dudley Street, Presque Isle, Maine.

Price: \$1050, (\$ 70 per foot).  
Not including removal of double  
hung sash, and necessary new  
stop beads.\*

Donor: Mr. Philip Phair.  
Minister The Rev. Donald Corringham, Rector.

Denomination Episcopal.

Architect

*Loss: 01 1/2 = 12.32*

Vents None.

Position in Church Aisle Window ; north second from entrance, next to Boone Memorial.

Height from floor 4 feet.

Protection Glass

Groove Rabbet

Metal Stone Wood

Exposure North.

Footage 15 feet.

Inscription "In loving memory of / Hannah Phair and Bertha Phair."

Design wanted soon.

Staging

Templates *Asked for combination*

Blueprints

General Information Flight into Egypt and The Boy Christ in the Temple.  
See color plate of the Boone window which goes next to this one.

*Right Panel 1/23/57*  
*Left PANEL*  
\*Mr. Johnston will make arrangements for the installation by a local carpenter. The work on the previous window was done by Mr. Gabe Moreau, 3 Roberta Street, who charged \$13.25 for the new stop beads; and \$12.05 for the installation.)

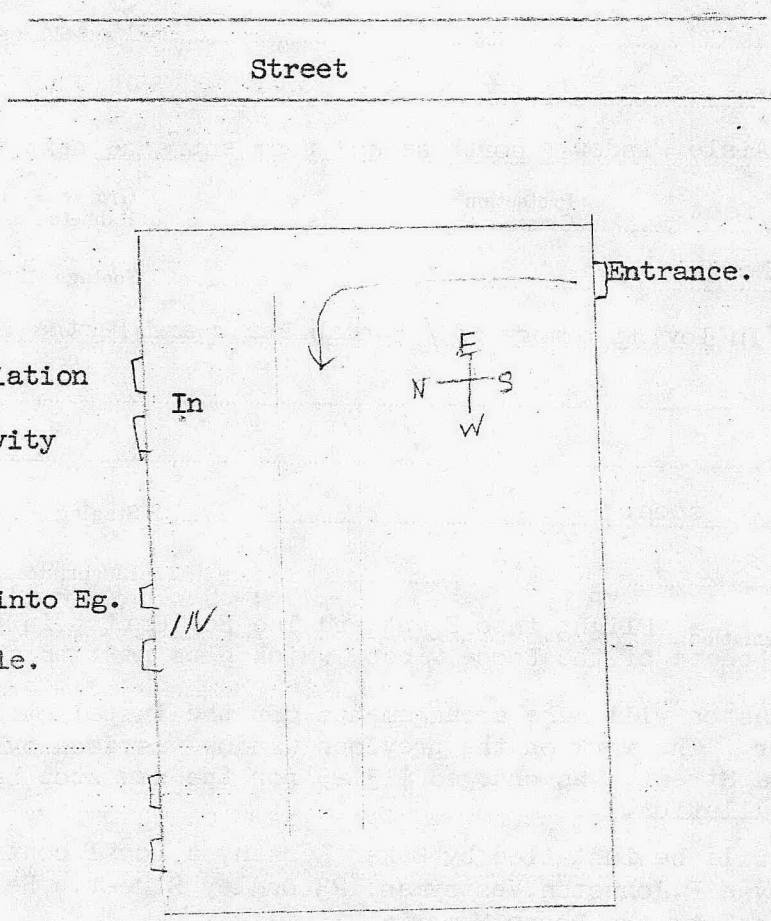
Widdow will be installed by Oskar Larsen, a local contractor, arranged for by Clyde P. Johnston, Vestryman, 23 Dudley Street. He says the window is identical to the Boone Memorial.

The Phair Memorial - As planned, it is devoted to <sup>the</sup> Flight into Egypt and the Boy Christ in the Temple. In the first panel <sup>Mary</sup> holding the Christ Child rides on the donkey led by Joseph, while in the second, <sup>the</sup> Boy Christ stands in the Temple disputing with the Doctors. Below are Angels of Praise and Prayer with Trumpet and censer.

The fields are designed in harmony with the earlier window, with growing vine forms outlining the medallions and flowering in white fleur-de-lis of purity. The border of conventional cloud forms is accented with stars of Heavenly steadfastness.

The colors are also planned to harmonize with the companion window, although the position of ruby and blue are transposed to introduce added interest.

Across the base is the memorial inscription, - "In loving memory of Hannah Phair - Bertha Phair."



Annunciation  
Boone Memorial.  
Nativity

(Bertha) Flight into Eg.  
Phair Memorial.  
(Hannah) In Temple.

In

IN

Entrance.

Street

