

No 3956

Place Asheville, North Carolina.

Building Trinity Church.

Date of Completion April 1, 1958.

Persons Interested

Price: \$1200 (\$85.71).

Low 87 1/2 % 451.55

Minister The Reverend John Walter Tuton, Rector

Denomination Episcopal.

Architect

Vents Yes, in place. Lower half of panel pivoted,

Position in Church Chapel. North window.

Height from floor 6 feet.

Protection Glass

Groove Rabbet

Metal Stone Stone.
Wood

Exposure North. Gets a somewhat subdued light, with bushes protruding half way up.

Footage 14' in the pair.

Inscription "To the Glory of God and in Memory of William Morris Redwood"

Letter of 7/11/57

Design wanted soon.

Staging

Templates

BE SURE TO USE BLACK PUTTY
Sizes in folder.

Blueprints

General Information "...something on the order of the First Pres. Church, Stockton..."

This is a small chapel, seating only about 50 people. It is entirely composed of oak paneling and the Trinity theme is emphasized, with three arches recurring in different ways.

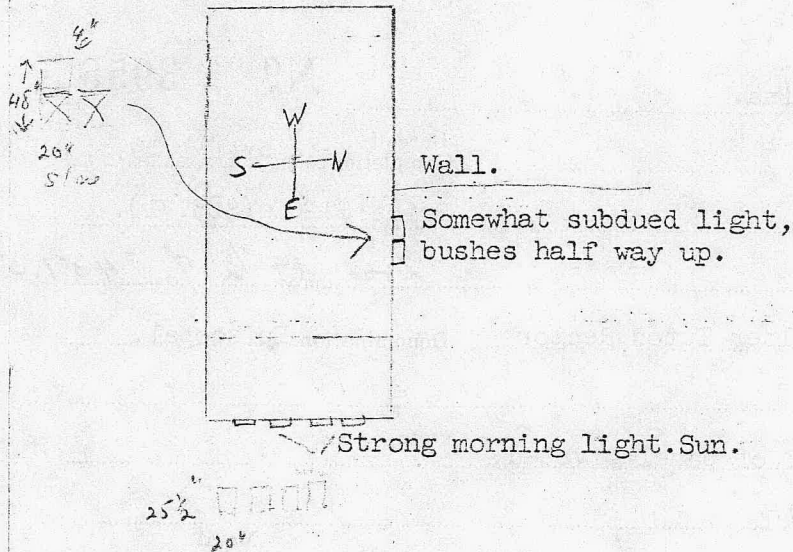
These panels are separated by a stone section 4 inches wide.

"...4 medallions in the four sections of the windows - to be jewel-like... to be devoted to some of the great themes of man's relationship with God, such as Creation, Incarnation (Nativity), Atonement (Calvary), and Incarnation continuing (Church)... make use of rich reds, gold and blues predominantly. I am very leery of greens..."

(Adam and Eve and animals, but not more than the hand of the Creator.)

(Pentecost)/

This window gets a somewhat subdued light, with bushes protruding half way up. They are almost at the ground line on the outside, and there is an angle of a wall right beside them toward the chancel.



This window is designed in four medallions devoted to significant themes in man's relationship with God.

At the lower left is the Creation, with Adam and Eve and various animals. The hand of the Creator from the clouds casts down rays of blessing.

Above is the Incarnation, with Joseph and Mary at either side of the radiant Christ Child in the manger.

Opposite is a symbol of the Atonement. Mary the mother and the beloved disciple John are represented at either side of Christ, with suggestions of the other two crosses in the field.

Below is continuing Incarnation through the Church. Saint Peter stands in the midst of the disciples at the day of Pentecost. Above are the twelve cloven tongues of fire.

The palette includes generous use of rich reds, golds and blues in jewel-like glass, with a thread of silver running throughout the composition.