

*not dated*  
N<sup>o</sup> 3884

Place Denver, Colorado.

Building Montview Presbyterian Church.

Date of Completion *on list*  
*mid 1957*

Persons Interested Mrs. A. A. Woodward, 3340 S. Albion St. Denver. Price: \$800 ea. (\$80.)

*or see suggestions in letter of 6/7/57 - about addition*

Minister Dr. Arthur Miller.

Denomination Presbyterian.

Architect Peterson & Linstedt, Associated Architects, Denver. (John Olsen).  
(Robert F. Linstedt, 625 W. 14th Av. Tel. AC 2-0258 - Ralph D. Peterson, 1707 Gilpin St. Tel. EA 2-7785.)

Vents

Position in Church Aisle Windows. (8 pairs).

| Height from floor | Protection Glass | Groove Rabbet | Metal Stone Wood |
|-------------------|------------------|---------------|------------------|
| 4' 6"             |                  |               |                  |

Exposure 4 north; 4 south (2 pair deeply shaded) Footage 10' each.

Inscription

Design wanted early July, 1956.

Staging

Templates

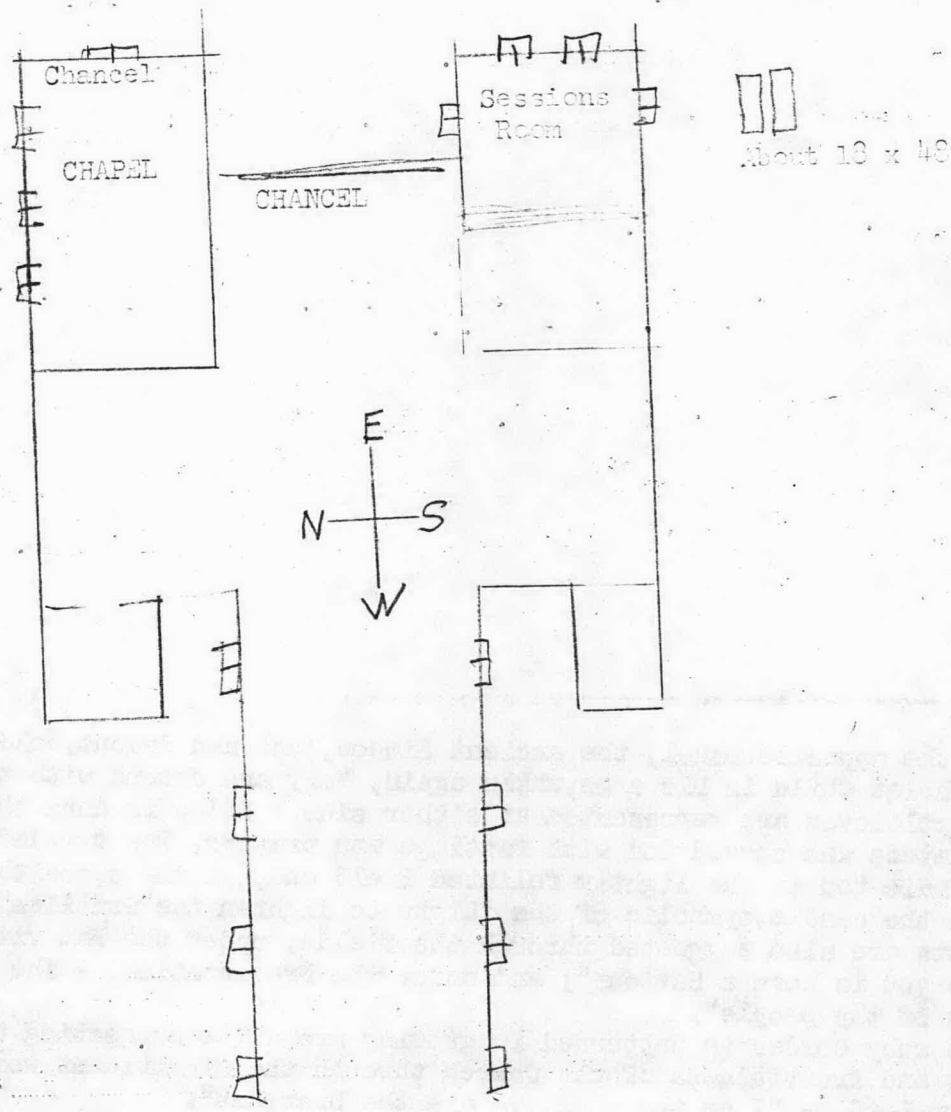
Blueprints

General Information (Also study symbols and theme for the Chapel windows, as well as those in the Sessions Room.)

These aisle windows should be kept light, for there is a building along the north side, and the whole fenestration is pretty limited. These aisle windows are to be devoted to subjects that will appeal to children, such as the Bible story.

See list of themes written out by Assistant Pastor for the aisle windows. There should also be small secondary scenes and symbols (candlesticks and turtles doves and brief texts, with citations. See memorandum.

TYPICAL SKETCH to be Birth and Presentation, in the general plan of Boulder, trying to keep the price to \$800 each pair.



**Typical pair of aisle windows.**

Following the plan to devote these windows to subjects that will appeal especially to children through the Bible story, we have symbolized the birth of Our Lord and His Presentation in the Temple.

The medallion at the left represents the group at Bethlehem, - Mary the Mother and Saint Joseph with his flowering staff, at either side of the Christ Child in the manger. Above is the Star of the Wise Men casting down its rays of divine light.

The lower secondary medallion suggests the shepherd with his flock.

In the opposite panel, the ancient Simeon, just and devout, holds the Christ Child in his arms, while again, Mary and Joseph with the cage of turtledoves are represented at either side. Below is Anna the prophetess who served God with fastings and prayers. The turtledoves are indicated in the lightly foliated field and, in the opposite panel the candle, symbolic of the "Light to lighten the Gentiles".

Texts are also suggested through the fields; under the Nativity, - "Unto you is born a Saviour"; and under the Presentation, - "The glory of thy people".

The ruby border is patterned in growing grapevine suggesting the unity and fruitfulness of the Church through the significant words of Our Lord, - "I am the vine, ye are the branches".

We have kept in mind the general character of our windows in the First Congregational Church, Boulder, but of course, the actual detail of design is not the same.

We also have in mind quite light, silvery windows to admit an abundance of illumination, at the same time suggesting a palette of full rich color.